

*43<sup>rd</sup> Annual*  
**HART**  
*angus farms*  
*Production Sale*



**FEB.26.18**  
**1:00 PM** *at the*  
**Sale Location 1 mile South of**  
*Frederick, SD*

*Selling* **80**  
*Yearling*  
*Angus Bulls*

**And an Elite Group of**  
**Yearling Angus Heifers**



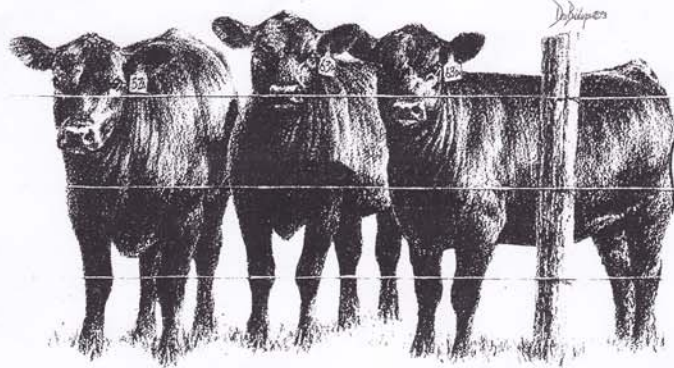


## THE TRADITION

Some folks just don't get it.  
They think owning cattle makes no sense.  
It takes too much time, too much equipment,  
not to mention the expense.

But the fondest memories of my life  
- they might think sound funny -  
were made possible by Mom and Dad,  
'cause they spent the time and spent the money.

You see, the most important lessons  
helping values grow so strong,  
come from loving cattle  
and passing that tradition on.



**There will be an empty seat  
at the sale this year...**

**In Loving Memory of Charles Hart -  
Father, Grandfather, Great-Grandfather,  
and the visionary that started this  
Angus program 53 years ago.**

*April 3, 1929 - August 3, 2017*



*"Don't worry  
Grandpa.*

*Your tradition  
will live on."*

*43<sup>rd</sup> Annual*  
**HART**  
*angus farms*  
*Production Sale*  
**SALE DAY PHONES:**

605-329-7211 (Brad) - 605-216-1019 (Alex)  
 605-380-0781 (Shawn) - 605-380-1453 (Tanaé)  
 605-216-5910 (Kelli)

**SCHEDULE:**

**Sunday, February 25**.....Viewing of Sale Cattle at the sale location one mile south of Frederick  
**Monday, February 26**  
 8:00 a.m.....Viewing of Cattle  
 11:30 a.m.....Complimentary Angus Beef Lunch  
 1:00 p.m.....**Hart Angus Farms 43rd Annual Production Sale**

**AIR TRANSPORTATION:**

The Aberdeen Regional Airport is served from all directions by Delta Airlines. Please contact Hart Angus Farms prior to sale day for assistance with transportation.

**AREA MOTELS: (Aberdeen, SD is located just 30 miles south of Frederick)**

AmericInn - 605-225-4565	Best Western - Ramkota Hotel - 605-229-4040
Holiday Inn Express - 605-725-4000	Super 8 East - 605-229-5005
Super 8 West - 605-225-1711	White House Inn - 605-225-5000

**LIVESTOCK PRESS REPRESENTATIVES:**

Donnie Leddy, Cattle Business Weekly.....	605-695-0113
Kirby Goettsch, Farm & Ranch Guide.....	605-380-3939
Rod Geppert, Angus Journal.....	605-295-3673
Jason Frey, Western Ag Reporter.....	701-300-0845
Colt Keffer, Livestock Plus.....	765-376-8784
Chris Effling, Tri State Livestock News.....	605-769-0142
Scott Dirk, Tri State Livestock News.....	605-380-6024

**SALES CONSULTANTS:**

Wes Tiemann, CK6 Consulting.....	816-244-4462
Gary Wall, GW Genetics Unlimited.....	406-208-8536
Vern Frey, Frey Livestock Sales & Service, Inc.....	701-721-0344
Myron Benes, Special Assignment.....	402-741-2040

**AUCTIONEER:**

Col. Al Conover.....	515-491-8078
----------------------	--------------

**FIRST BREEDING SEASON GUARANTEE**

All bulls selling for \$3000 or more will be guaranteed against breeding injury for the first breeding season. Breeding season is defined as a 90-day period following the first turnout of bull. One hundred percent of the purchase price of the injured bull, minus a salvage value of \$1,500 will be given credit in a future Hart Angus Farms sale or a replacement bull will be provided if one is available. All injured bulls must have a veterinarian certificate of injury. We also reserve the right to a second opinion by a veterinarian of our choice. Please notify us as soon as possible should injury occur and prior to the injured bull being sold for salvage. All claims must be made by October 1, 2018. This guarantee does not include mortality. If buyer desires to purchase Mortality Insurance, Hart Angus will pay for half of the premium with claim proceeds going solely to buyer. This releases Hart Angus Farms from any further guarantees in regard to animal mortality. This guarantee does not cover replacement bulls.

*Offering 200 miles free delivery on bulls!*  
 Cost assistance for heifers and cost assistance over 200 miles.

*Delivery starting March 1, or we can keep the bulls until April 30 and the buyer will be responsible for pick up. \$100 OFF PER HEAD IF YOU HAUL YOUR BULL/HEIFER SALE DAY.*



**BRAD HART & FAMILY**  
**ALEX HART & FAMILY**  
 38735 108th St - Frederick, SD 57441  
 Home Phone: 605-329-2645

Brad Cell: 605-329-7211 • brad@hartangusfarms.com  
 Alex Cell: 605-216-1019 • alex@hartangusfarms.com  
 www.hartangusfarms.com

**FEB.26.2018**

**Monday 1:00 PM** at the  
**Sale Location 1 mile South of Frederick, SD**

*Selling 80 Yearling Angus Bulls*  
**Plus an Elite Group of 2017 Heifers**  
**With Complete Performance & Ultrasound Data**

*General Information*

**HEALTH:** We at Hart Angus Farms have a complete herd health program which is managed by Dr. Jim Bain of Frederick Veterinary Clinic. All bulls will be accompanied by health papers for shipment to anywhere in the United States. They have been vaccinated for Rednose, PI3, BVD, 7-way clostridial, BRSV, Haemophilus, Pasturella, Hemolytica, and Multicidia. They have had their booster shot at weaning for MLV, IBR, PI3, BVD, BRSV and Haemophilus. They have also been dewormed with Safeguard and poured with Cleanup. Dams of all bulls and heifers have been tested Johnes free.

**GENETIC DEFECTS:** All bulls and heifers selling are free of all known genetic conditions monitored by the American Angus Association by test or pedigree, unless otherwise noted.

**DELIVERY:** FREE DELIVERY for the first 200 miles on bulls. Cost assistance for heifers and cost assistance over 200 miles. Delivery will start March 1. The buyer assumes all death and injury risk on cattle purchased.

**LIVESTOCK INSURANCE:** Insurance will be available sale day. See information under First Breeding Season Guarantee.

**PERFORMANCE INFORMATION:** All performance information will be posted on www.hartangusfarms.com and DV Auction as soon as complete, and will be available on sale day for your inspection.

**EPDS:** American Angus now updates EPDs weekly. The EPDs and percentile ranking in this catalog are as of 1/19/18. All EPDs are Genomic Enhanced.

**SIGHT UNSEEN PURCHASE GUARANTEE:** If you cannot attend the sale and want to purchase bulls or heifers, please give us a call. We will be glad to help you with your order. We guarantee 100% satisfaction on all orders.

**ANNOUNCEMENTS:** Announcements made sale day and from the auction block during the sale take precedence over printed material in the catalog or other printed material associated with this sale.

**SALE TERMS & CONDITIONS:**

- 1) All cattle will sell under the terms and conditions adopted by the American Angus Association.
- 2) We guarantee our cattle to be breeders but reserve the right to test any animal that may be returned to us as a non-breeder for one hundred eighty (180) days before making an adjustment. Cattle will be returned at the buyer's expense, and if declared a sound breeder by a competent veterinarian the cattle will be returned to the buyer's ranch at the buyer's expense. In case an adjustment is required, we will provide you with a satisfactory replacement (if available) or issue you a credit equal to the bull's purchase price minus the salvage value of \$1500.
- 3) Any death or injury after the animal is sold is at the buyer's risk.
- 4) Anyone attending this sale attends at their own risk. The Hart's or any of the sale force will not be held responsible for any personal injury while attending this sale.
- 5) Hart Angus Farms will retain 1/3 semen revenue sharing interest on all 2018 sale bulls.



This is a video sale only – Sale offering may be viewed any time prior to the sale and will be penned on sale day weekend and sale day.

**VIEW VIDEOS ONLINE AT WWW.DVAUCTION.COM**

This sale will be broadcast live on the internet.



Visit [www.DVAuction.com](http://www.DVAuction.com) and Register Today  
 DVA Rep: Justin Dikoff (605) 290-0635  
 Email: [jdikoff@dvauction.com](mailto:jdikoff@dvauction.com)



**BRAD HART & FAMILY**  
**ALEX HART & FAMILY**

38735 108th St, Frederick, SD 57441

Home Phone : 605-329-2645

Brad Cell: 605-329-7211 • brad@hartangusfarms.com

Alex Cell: 605-216-1019 • alex@hartangusfarms.com  
www.hartangusfarms.com

Dear Friends and Fellow Angus Enthusiasts,

Hart Angus Farms would like to extend a sincere welcome to our 43<sup>rd</sup> Annual Production Sale! Please let this letter serve as your personal invitation to join us on February 26<sup>th</sup>.

Yet another year has passed by and left along its path a wake of changes. One such change will remain near and dear to our hearts here at Hart Angus, as just last August we lost the pioneer who started us down this path over 50 years ago. Charles Hart was a visionary who sought to produce quality Angus cattle for his customers with a drive that was unparalleled. He poured his heart and soul into his cattle herd and his passion for the industry will live on through his family for generations to come. He will be dearly missed by all.

Here at Hart Angus Farms, we are proud to say that amidst all the changes of the new year, our goal to bring you, our valued customer, the most efficient, genetically sound, and structurally correct seed stock we possibly can has not changed. Longevity is a trait that cannot go unaccounted for. With the value of your dollar being stretched more than it has ever been in recent history, now more than ever it is truly crucial that you invest in a product that will yield you a return. Fortunately, the cattle industry is holding strong and we believe that a return on your investment is what you will get when purchasing a bull or heifer in this year's sale.

Not unlike any other year, we have selected our sale offering from over 250 bulls weaned in the fall. The 80+ bulls we have placed in the sale represent the top 35% of our calf crop and we have studied both pedigree and phenotype to bring you our best offering to date. We have several ET calves in this year's offering that boast what we believe to be the best maternal genetics on our ranch. These ET calves are sired by some of the brightest stars in the Angus breed, such as Basin Payweight 1682, Plattemere Weigh Up K360, and VAR Index 3282. Sons of other hot A.I. sires like Barstow Bankroll B73, Quaker Hill Rampage 0A36 and EF Commando 1366 will sell. We also will be offering an elite set of heifers sired by Quaker Hill Rampage 0A36, Silveiras Conversion 3048 and Barstow Bankroll B73 to name a few. These females were selected from the very top end of our replacement heifers, and we are proud to have them represent our cow herd.

In closing, we would like to thank you for your loyalty and support of our program throughout the years. For those who are new to us, we will do all we can to help you satisfy your herd bull and foundation female needs. We welcome those of you who can join us at the farm on sale day and will gladly help you find a way to connect with us if you are unable to attend. We are available anytime for questions, or just conversation, and visitors are always welcome! May the New Year bring you success, prosperity, and hopefully a little rain! God Bless this great country we live in, and remember, every herd needs a Hart!

Sincerely,

Brad and Alex Hart and family



Alex and Brad



Kelli holding Avery, Brad, Shawn, Alex holding Chandler, and Tanae' holding Brooklyn

Dear Angus Friends,

It is again our pleasure to work with Brad and Alex Hart in the preparation of their 2018 sale catalog. As always, this offering is packed with genetic potential to bend the growth curve. This program has consistently stayed on the forefront of the industry by acquiring elite herd sires that not only walk these pastures but also the bull runs at leading AI studs. Whether talking about the more recent acquisitions like Hilltop Open Range 2279 and Barstow Bankroll B73 or historic attainments such as Silveiras Conversion 3048, Connealy Kingdom and Connealy Prototype, Brad Hart has used all of his available resources: financial and intellectual to meet the genetic demands of an ever-evolving beef industry.

Note that this year's offering has been i50K or Angus GS evaluated from top to bottom adding as much EPD accuracy as about 20 reported progeny. The inclusion of dam's production and sales information along with individual performance and a 3-generation pedigree give the perspective buyer the very most in selection tools to make informed buying decisions.

I would like to congratulate the Hart family on another successful calf crop and encourage your continued patronage of their aggressive breeding program.

Dave Sweeney  
Christa Nichols

**Dave Sweeney**  
21547 Co. Hwy S27  
Alden, IA 50006  
641-373-4340

**Christa Nichols**  
12265 170th Street  
Alden, IA 50006  
641-373-0342

livestockhub1@gmail.com  
www.livestockhub.net



facebook.com/livestockhub

@livestockhub1



Dave Sweeney



Christa Nichols

## Hart Angus Farms Reference Sires

### Ref Sire **Barstow Bankroll B73**

**A** Reg: 18036327 Tattoo: B73 BD: 02/14/2014 Bull

Sitz Dash 10277 #  
Barstow Cash  
17145326 Barstow Queen W16  
  
CAR Efficient 534 #  
Barstow Miss Dianna Z25  
17479418 Barstow Miss Dianna X128 #

Sitz Upward 307R #  
Sitz Everelda Entense 2665 +  
S A V Final Answer 0035 #  
RCA Queen R42  
K C F Bennett Efficient  
CAR Miss Susie 308 #  
SydGen C C & 7 #  
Barstow Miss Dianna BA T134



PRODUCTION EPDs				MATERNAL EPDs			\$ VALUES			
CED	BW	WW	YW	CEM	MIK	SEN	\$W	\$F	\$G	\$B
+15	-1.9	+58	+117	+14	+22	-5.83	+58.65	+85.84	+27.91	+146.08
CARCASS	CW	MARB	REA	FAT						
	+58	.23	+44	.32	+85	.30			+034	.31

- Sons sell as Lots 1 thru 6. Select Sires feature, Barstow Bankroll B73 is a low birth weight, high performance son of Barstow Cash working at Hart Angus Farms and Dockert's W-Heart Ranch, ND. "Bankroll" was the \$35,000 (2/3 int) second top-selling bull of the 2015 Barstow Sale where he posted individual performance BWR 96, WWR 103, YWR 11, IMF ratio 111 and RE ratio 103.
- Bankroll boasts amazing Zoetis HD50 results of CED 4, BW 4, WW 10, YW 3, Doc 5, and HP 5.
- His first 34 progeny posted an average BWR 97.



**BARSTOW BANKROLL B73**

### Ref Sire **Basin Payweight 1682**

**B** Reg: +17038724 Tattoo: 1682 BD: 02/11/2011 Bull

Vermilion Payweight J847 #  
Basin Payweight 006S #+  
15332050 Basin Lucy 3829 +  
  
HARB Pendleton 765 J H #  
21AR O Lass 7017  
15875998 21AR O Lass F24A

Vermilion Dateline 7078 #  
Vermilion Lass 7969  
C A Future Direction 5321 #  
Basin Lucy 178E  
S A V Final Answer 0035 #  
H A R B Black Lady 375 J H #  
VDAR Legend 1281 #  
21AR O Lass A24 #



PRODUCTION EPDs				MATERNAL EPDs			\$ VALUES			
CED	BW	WW	YW	CEM	MIK	SEN	\$W	\$F	\$G	\$B
+8	+3	+70	+121	+15	+31	-21.37	+78.75	+96.72	+32.17	+168.99
CARCASS	CW	MARB	REA	FAT						
	+63	.50	+97	.55	+55	.58			+072	.54

- Sons sell as Lots 7 thru 23. Basin Payweight 1682 is an ABS featured calving ease sire that is transmitting extra rib dimension and muscle mass. He is part of a very few bulls that can balance more than +80 \$W and more than +180 \$B.
- A full sister to Payweight 1682 set a record selling price at the 2015 NILE Sale, topping the event at \$210,000.



**BASIN PAYWEIGHT 1682**

### Ref Sire **Quaker Hill Rampage OA36**

**C** Reg: +16925771 Tattoo: OA36 BD: 09/11/2010 Bull

Boyd New Day 8005 #+  
MCC Daybreak #  
14777016 MCC Miss Focus 134 #  
  
Ideal 4355 of OT26 2440  
QHF Blackcap 6E2 of 4V16 4355 +  
15601886 QHF Blackcap 4V16 of 1H8

AAR New Trend #  
S V F Forever Lady 57D  
S A F Focus of E R #  
M C C Miss Chief 519 +  
S S Objective T510 OT26 #  
Ideal 2440 of 7407 7275  
Rito 2V1 of 2536 1407 #+  
Quaker Hill Blackcap 1H8



PRODUCTION EPDs				MATERNAL EPDs			\$ VALUES			
CED	BW	WW	YW	CEM	MIK	SEN	\$W	\$F	\$G	\$B
+9	+1.7	+81	+140	+13	+34	-39.12	+81.52	+116.99	+38.63	+191.46
CARCASS	CW	MARB	REA	FAT						
	+85	.47	+24	.53	+1.73	.53			-029	.49

- Sons sell as Lots 24 thru 30. Quaker Hill Rampage OA36 is an ABS feature and is MCC Daybreak's biggest "spread" son. Rampage is the only proven sire in the breed to achieve a +9 CED and a +192 \$B.
- EPD sorts of non-parent bulls or cows that incorporate both CED and \$B usually reveal sons/dtrs or maternal grandsons/dtrs of Rampage.



**QUAKER HILL RAMPAGE OA36**

### Ref Sire **Plattemere Weigh Up K360**

**D** Reg: 16692552 Tattoo: K360 BD: 02/08/2010 Bull

Connealy Onward #  
Sitz Upward 307R #  
14963730 Sitz Henrietta Pride 81M  
  
G A R Retail Product #  
Barbara of Plattemere 337 #  
16274856 Barbara of Plattemere 311

Connealy Lead On #  
Altune of Conanga 6104  
Sitz Value 7097 #  
Sitz Henrietta Pride 1370  
G A R Precision 1680 #  
G A R Ext 4927 +  
Bon View New Design 1407 #  
Barbara of Plattemere 286



PRODUCTION EPDs				MATERNAL EPDs			\$ VALUES			
CED	BW	WW	YW	CEM	MIK	SEN	\$W	\$F	\$G	\$B
+6	+1.1	+75	+138	+9	+28	-24.12	+75.53	+120.92	+31.64	+169.73
CARCASS	CW	MARB	REA	FAT						
	+65	.44	+67	.52	+86	.51			+056	.47

- Sons sell as Lots 31 thru 35. Plattemere Weigh Up K360 is the top YW EPD bull in the Select Sires line-up. His Pathfinder® dam, Barbara of Plattemere 337, by Retail Product is now an elite donor at Deer Valley selling ½ interest to Simons Cattle Co at \$20,000 where she produced the donor dam of the \$27,000 top-selling heifer at the 2016 National Western Foundation Female Sale as well as a \$16,000 highlight in the 2017 event.



**PLATTEMERE WEIGH UP K360**

## Hart Angus Farms Reference Sires



**SILVEIRAS CONVERSION 3048**

Ref Sire

**E**

### Silveiras Conversion 3048

Reg: 17598819 Tattoo: 3048 BD: 01/20/2013 Bull

BT Crossover 758N #+  
Silveiras Conversion 8064  
16262077 EXG Saras Dream S609 R3 +

G A R Yield Grade #+  
Silveiras Elba 6036  
15504482 Silveiras Elba 4312 +

C A Future Direction 5321 #  
BT Royal Pride 237G  
BR Midland  
Exar Saras Dream 9809  
G A R Precision 1680 #  
G A R Ext 4526 +  
B/R New Design 036 #  
O'Neals Electra 204 +



PRODUCTION EPDs				MATERNAL EPDs			\$ VALUES			
CED	BW	WW	YW	CEM	Milk	SEN	\$W	\$F	\$G	\$B
+7	+2.4	+6.0	+11	+11	+26	-16.24	+52.34	+81.14	+46.77	+180.57
CARCASS	CW			MARB			REA		FAT	
		+65	.27		+67	.34		+9.5	.34	-.084 .33

- Sons sell as Lots 36 thru 39. Hart Angus Farms herd sire, Conversion 3048 is an Accelerated Genetics featured sire with an outcross high \$B pedigree and outstanding individual performance featuring a yearling weight of almost 1600 lbs. He is delivering added frame size and performance with carcass attributes.
- He ranks in the top 10% or better for \$F, \$G and \$B.



**HILLTOP OPEN RANGE 2279**

Ref Sire

**F**

### Hilltop Open Range 2279

Reg: 17427037 Tattoo: 2279 BD: 02/20/2012 Bull

Sitz Identity 2575 #  
Sitz Identity 7828  
15991509 Sitz Beebe Queen 1956 #

Sitz Alliance 7544 #  
HT Hazel GP 97  
16525644 Hilltop Hazel GP 7120

Bluegrass New Design 205 #+  
Sitz Florabelle Fanny 2683 #  
Sitz Alliance 476P #  
Sitz Beebe Queen 2093  
Sitz Alliance 6595 #  
Sitz Pride 2561  
S A V Reality 5350  
HT Hazel GP P7



PRODUCTION EPDs				MATERNAL EPDs			\$ VALUES			
CED	BW	WW	YW	CEM	Milk	SEN	\$W	\$F	\$G	\$B
+12	+7	+74	+148	+15	+32	-35.09	+72.68	+113.66	+14.00	+139.89
CARCASS	CW			MARB			REA		FAT	
		+78	.25		+42	.32		+67	.35	+072 .32

- Sons sell as Lots 40 and 41. Selected by Hart Angus Farms and Accelerated Genetics as the \$14,000 2/3 interest sensation of the 2013 Hilltop Angus sale where he posted individual performance of BWR 89, WWR 112, and YWR 114 with 145 contemporaries.
- Today he boasts progeny ratios from 19 herds of BR 187@100, WR 188@103, YR 40@106, IMF 33@104 and RE 33@105. He has 11 daughters now in production that weaned their first calves with a collective nursing ratio of 102.



**VAR INDEX 3282**

Ref Sire

**G**

### VAR Index 3282

Reg: +17513381 Tattoo: 3282 BD: 04/01/2013 Bull

G A R New Design 5050 #+  
G A R Ingenuity +  
16497066 G A R Objective 1067

Connealy Onward #  
Sandpoint Blackbird 8809 +  
16143141 Riverbend Blackbird 4301 +

B/R New Design 036 #  
G A R Precision 706  
S S Objective T510 OT26 #  
G A R Retail Product 2195  
Connealy Lead On #  
Altune of Conanga 6104  
G A R Grid Maker #+  
Riverbend Blackbird 2204 +



PRODUCTION EPDs				MATERNAL EPDs			\$ VALUES			
CED	BW	WW	YW	CEM	Milk	SEN	\$W	\$F	\$G	\$B
+7	+9	+56	+97	+9	+40	-27.49	+70.03	+56.09	+58.35	+180.57
CARCASS	CW			MARB			REA		FAT	
		+49	.36		+1.10	.40		+1.27	.45	-.029

- Sons sell as Lots 42 thru 46. VAR Index 3282 was the \$100,000 1/2 interest top-selling bull of the 2014 Vintage Angus sale. He is an astounding carcass trait sire with MB and RE EPDs over 1.0 and a sub-zero Fat. No bull in the current sire summary can match his combination of CED, BW, Marb, RE, \$W and \$B. His dam is the \$440,000 valued Vintage and Herbster donor with over \$1.5 million in progeny sales. Featured in Accelerated Genetics.

## Hart Angus Farms Reference Sires

Ref Sire

**H**

### RB Tour Of Duty 177

Reg: +16984170 Tattoo: 177 BD: 01/24/2011 Bull

Connealy Onward #  
Werner War Party 2417 #+  
16004857 BAAR USA Lady Jaye 489 +  
Vermilion Dateline 7078 #  
B A Lady 6807 305 +  
15679812 G D Lady Hi Flyer 302 +

Connealy Lead On #  
Altune of Conanga 6104  
B A R Ext Traveler 205 #  
Cra Lady Jaye 608 498 S Easy  
Connealy Dateline #  
Vermilion Blackbird 5044 #  
Hoff Hi Flyer S C 7134 #  
Lady Valectorian 3 S A F



PRODUCTION EPDs				MATERNAL EPDs			\$ VALUES					
CEW	BW	WW	YW	CEM	Milk	SEN	\$W	\$F	\$G	\$B		
+6	+2.4	+67	+120	+11	+29	-22.45	+63.65	+92.36	+36.18	+166.79		
<b>CARCASS</b>	<b>CW</b>	<b>+62</b>	<b>.37</b>	<b>MARB</b>	<b>+46</b>	<b>.43</b>	<b>REA</b>	<b>+95</b>	<b>.49</b>	<b>FAT</b>	<b>-0.35</b>	<b>.42</b>

• Sons sell as Lots 52 thru 55. RB Tour Of Duty 177 is the record-selling bull of the Minnesota Bull Test selected by Crouch Angus Valley who became a top-selling bull at ABS and ORigen. He stands among the top sires in the breed for BW to YW spread and may become the dominant descendant of the famed "Lady" cow family that has produced test station winners from Wisconsin to Montana and record selling females.



RB TOUR OF DUTY 177

Ref Sire

**I**

### HAYNES Outright 452

Reg: \*17925323 Tattoo: 452 BD: 01/10/2014 Bull

S A V Final Answer 0035  
K C F Bennett Absolute  
\*16430795

Thomas Miss Lucy 5152  
HAYNES ND 454 Miss 179  
17059085 HAYNES Miss Infocus 984

Sitz Traveler 8180  
S A V Emulous 8145  
Wulfs Ext 6106  
Thomas Miss Lucy 3050  
Boyd New Day 8005  
B/R Ruby 1224  
Mytty In Focus  
HAYNES Miss RP S677

PRODUCTION EPDs				MATERNAL EPDs			\$ VALUES					
CEW	BW	WW	YW	HP	CEM	Milk	\$W	\$F	\$G	\$B		
+4	+6	+70	+135	+9.0	+8	+16	+54.15	+115.71	+20.78	+169.97		
<b>CARCASS</b>	<b>CW</b>	<b>+70</b>	<b>.62</b>	<b>MARB</b>	<b>+31</b>	<b>.58</b>	<b>REA</b>	<b>+76</b>	<b>.55</b>	<b>FAT</b>	<b>+0.25</b>	<b>.58</b>

• Sons sell as lots 56 and 57. HAYNES Outright 452, is an ABS featured sire that gained national recognition as the featured top-selling bull of the 2015 Haynes Cattle sale where he recorded a BW 70 lbs, WW ratio 108, YW ratio 123, IMF ratio 115 and RE ratio 107. Today, he is a high accuracy curve-bending, high docility sire with a \$B in the top 10%.



HAYNES OUTRIGHT 452

Ref Sire

**J**

### SAV Renown 3439

Reg: \*17633839 Tattoo: 3439 BD: 01/07/2013 Bull

R R Rito 707 #  
Rito 707 of Ideal 3407 7075 +  
13066860 Ideal 3407 of 1418 076

S A V 8180 Traveler 004 #  
S A V Blackcap May 4136 \*  
14739095 S A V May 2397 #+

Rito N Bar  
Eriskay of Rollin Rock 3  
Ideal 1418 of 8103 4286 #  
Ideal 076 of 692 8375  
Sitz Traveler 8180 #  
Boyd Forever Lady 8003 +  
S A F 598 Bando 5175 #+  
S A V May 7238

PRODUCTION EPDs				MATERNAL EPDs			\$ VALUES					
CEW	BW	WW	YW	HP	CEM	Milk	\$W	\$F	\$G	\$B		
+1	+2.8	+72	+126	+10.9	+0	+20	+59.62	+78.96	+11.64	+104.55		
<b>CARCASS</b>	<b>CW</b>	<b>+45</b>	<b>.5</b>	<b>MARB</b>	<b>+05</b>	<b>.46</b>	<b>REA</b>	<b>+74</b>	<b>.47</b>	<b>FAT</b>	<b>+0.28</b>	<b>.46</b>

• Sons sell as lots 58 and 59.  
• SAV Renown 3439 was the \$175,000 lead-off bull of the 2014 Schaff Angus Valley Sale and is recognized as a full brother to the equally sought SAV Resource 1441. Each of these is backed by the top-income producing cow in SAV history, SAV Blackcap May 4136 that has produced \$8 million in progeny sales.



SAV RENOWN 3439

## Hart Angus Farms Reference Sires



**K C F BENNETT FORTRESS**

### Ref Sire **K** **K C F Bennett Fortress**

Reg: \*17259012 Tattoo: Y331 BD: 09/25/2011 Bull

KMK Alliance 6595 I87 #  
**Connealy Consensus # \***  
**15513367** Blinda of Conanga 004

S S Objective T510 OT26 # \*  
**Thomas Patricia 9705 \***  
**16615196** Thomas Patricia 71138 +

Sitz Alliance 6595 #  
 G A R Ext 916 #+  
 Rito 616 of 4B20 6807 #  
 Blenda of Conanga 129  
 S S Traveler 6807 T510 #  
 S S Miss Rita R011 7R8  
 G A R Predestined # \*  
 Thomas Patricia 2626 +

PRODUCTION EPDs				MATERNAL EPDs			\$ VALUES					
CED	BW	WW	YW	HP	CEM	Milk	\$W	\$F	\$G	\$B		
+13	+0	+78	+134	+10.1	+14	+31	+87.64	+101.90	+42.39	+142.65		
CARCASS	CW	+41	.58	MARB	+0.60	.54	REA	+0.69	.52	FAT	-.022	.53

- Sons sell as lots 60 thru 63.
- KCF Bennett Fortress is a Select Sires feature that boasts one of the breed's highest accuracy "spread EPD profiles. He combines a +13 CED with WW and YW EPDs in the top 2% and a \$W value in the top 1% of current sires. Moreover, he enjoys strong calving ease credentials that decree him suitable for heifers.



**EF COMMANDO 1366**

### Ref Sire **L** **EF Commando 1366**

Reg: 17082311 Tattoo: 1366 BD: 08/25/2011 Bull

Basin Franchise P142 #  
**EF Complement 8088**  
**16198796** EF Everelda Entense 6117 +

B/R Ambush 28 #+  
**Riverbend Young Lucy W1470**  
**16543240** Riverbend Young Lucy T1080 +

C A Future Direction 5321 #  
 Basin Chloe 812L  
 BR Midland #  
 H F Everelda Entense 869 +  
 Rockn D Ambush 1531 #  
 B/R Ruby of Tiffany 8250 +  
 S S Objective T510 OT26 #  
 B/R Young Lucy 2118 +



PRODUCTION EPDs				MATERNAL EPDs			\$ VALUES					
CED	BW	WW	YW	CEM	Milk	\$EN	\$W	\$F	\$G	\$B		
+16	-1.6	+56	+93	+17	+26	-4.74	+65.42	+65.42	+54.22	+119.76		
CARCASS	CW	+27	.35	MARB	+1.14	.40	REA	+0.82	.46	FAT	+0.015	.41

- Sons sell as Lots 64 thru 69. EF Commando 1366 is the popular Genex featured calving ease, carcass and moderate milk sire that is also moderate framed. He sired the \$157,000 breed sensation, Baldrige Bronc to Mile High Angus and the \$150,000 Baldrige Commando CO36 to ABS Global. Commando progeny are attractive, wide bodied, big hipped individuals with sound feet and super dispositions.



**V A R RANGER 3008**

### Ref Sire **M** **V A R Ranger 3008**

Reg: \*17455083 Tattoo: 3008 BD: 01/08/2013 Bull

Mytty In Focus # \*  
**A A R Ten X 7008 S A # \***  
**15719841** A A R Lady Kelton 5551 #

Connealy Onward \*  
**Sandpoint Blackbird 8809 +\***  
**16143141** Riverbend Blackbird 4301 +

S A F Focus of E R #  
 Mytty Countess 906  
 S A V Adaptor 2213  
 H S A F Lady Kelton 504B +  
 Connealy Lead On #  
 Altune of Conanga 6104  
 G A R Grid Maker #+\*  
 Riverbend Blackbird 2204 +

PRODUCTION EPDs				MATERNAL EPDs			\$ VALUES					
CED	BW	WW	YW	HP	CEM	Milk	\$W	\$F	\$G	\$B		
+7	+2.2	+71	+127	+10.9	+10	+26	+64.30	+101.40	+44.20	+168.78		
CARCASS	CW	+52	.53	MARB	+0.62	.47	REA	+0.97	.47	FAT	-.020	.47

- Sons sell as lots 70 thru 73.
- VAR Ranger 3008 is a maternal brother to VAR Reserve 1111 and VAR Generation 2100 and is considered a top son of AAR Ten X from the famed Sandpoint Blackbird 8809 who has produced \$4 million in progeny sales in 4 years.



## Hart Angus Farms Reference Sires

Ref Sire

**N**

### JMB Traction 292

Reg: 17262374 Tattoo: 292 BD: 03/11/2012 Bull

GDAR Game Day 449 #+

**Sitz Top Game 561X \***

16559105 Sitz Pride 88T #

S A V 004 Predominant 4438 #+

**JMB Emulota 013 \***

16776281 BAR S Emulota 5426 #

Boyd New Day 8005 #+

G D A R Miss Wix 474 #

Connealy Onward # \*

Sitz Pride 46P

S A V 8180 Traveler 004 #

S A V Emblynette 1182

Connealy Front Page 0228 #

BAR S Emulota 0666

PRODUCTION EPDs				MATERNAL EPDs			\$ VALUES			
CED	BW	WW	YW	HP	CEM	Milk	\$W	\$F	\$G	\$B
+0	+2.4	+69	+121	+12.0	+4	+33	+76.80	+86.25	+23.44	+129.12
CARCASS		CW	+51 .57	MARB	+20 .52	REA	+95 .51	FAT	+0.09	.52

- Sons sell as lots 80 thru 82.
- JMB Traction 292 is a Select Sires feature proving to be the premier outcross sire for added muscle and dimension, while offering breed impacting growth, carcass, maternal EPDs, and \$Value indexes. Traction was one of the most exciting bulls in the Denver display last year along with his dam, JMB Emulota 013 who sold in Denver at \$45,000 ½ interest.



**JMB TRACTION 292**

Ref Sire

**O**

### PA Safeguard 021

Reg: \*16772185 Tattoo: 021 BD: 01/16/2010 Bull

B/R New Design 036 #

**G A R New Design 5050 #+**

13728513 G A R Precision 706

Woodhill Foresight #+

**PA Lorna Marshall 2905-730 #+**

15992383 Peles 2905 Dateline Marshall

V D A R New Trend 315 #

B/R Blackcap Empress 76

G A R Precision 1680 #

G A R Ext 2114 +

Papa Forte 1921 #

Bon View Gammer 85

Connealy Dateline #

M A R Krugerrand Marshall905

PRODUCTION EPDs				MATERNAL EPDs			\$ VALUES			
CED	BW	WW	YW	HP	CEM	Milk	\$W	\$F	\$G	\$B
-2	+1.7	+52	+101	+9.3	-6	+33	+62.96	+49.21	+55.45	+154.40
CARCASS		CW	+51 .76	MARB	+1.19 .74	REA	+84 .70	FAT	-.003	.74

- Sons sell as lots 83 thru 85.
- PA Safeguard 021 is featured on the ABS Global roster. He is an Angus Sire Alliance graduate that became one of ABS's "Rock Solid Accuracy" sires touting rapid growth, Scrotal, and Docility EPDs as well as a coveted 4 star carcass merit ranking. Safeguard has earned a reputation as a bull that adds carcass value, eye appeal and performance in an outcross package



**PA SAFEGUARD 021**

Ref Sire

**P**

### Jindra Double Vision

Reg: \*16748826 Tattoo: 730 BD: 02/08/2010 Bull

Bon View New Design 878 #

**Connealy Reflection #**

14528330 Happy Grill of Conanga 6260

Hoff Limited Edition S C 594 #

**Hoff Rachel 8312 405 +**

14806260 Hoff Miss Expo S C 4223

B/R New Design 036 #

Bon View Gammer 85

N Bar Emulation EXT # \*

Happy Date of Conanga

Hoff Charger S C 242

Hoff Boss Lady S C 3V9

Summitcrest Expo 0E27

G D A R Rachel 4223

PRODUCTION EPDs				MATERNAL EPDs			\$ VALUES			
CED	BW	WW	YW	HP	CEM	Milk	\$W	\$F	\$G	\$B
+3	+2.1	+62	+120	+8.8	+12	+28	+62.81	+86.77	+37.92	+167.23
CARCASS		CW	+62 .63	MARB	+71 .59	REA	+54 .57	FAT	-.001	.59

- Sons sell as lot 86 and 87, a daughter as lot 98.
- Jindra Double Vision is a Genex featured sire with an outcross pedigree, yet breed-leading calving ease and growth boasting a CED in the top 5% and \$B in the top 1%. Double Vision was lead bull in the popular Jindra heavyweight Pen of Three bulls at the 2011 National Western and was the top selling bull of their 2011 Bull Sale. He was a crowd favorite in the display pens at the 2012 and 2013 NWSS.



**JINDRA DOUBLE VISION**

## Sons of Barstow Bankroll B73



### HART BANKROLL 7086

LOT 1

- Dam's Production: BR 3@86, NR 3@100.
- Two maternal sisters have been retained.
- He shares the #1 highest CED and the #2 lowest BW EPD in the bull offering.
- Note that he ranks in the top 1% of non-parent bulls for both CED and YW EPDs.
- Recommended for heifers and cows.

**60% OF THE SALE  
OFFERING IS  
SUITABLE FOR  
HEIFERS**

**1**

### Hart Bankroll 7086

Reg: 18940351 Tattoo: 7086 BD: 02/02/17 Bull  
Act. BW 72 lbs Adj. WW 770 lbs WW Ratio 105

Barstow Cash  
**Barstow Bankroll B73**  
18036327 Barstow Miss Dianna Z25

Connealy Cavalry 1149  
**Hart Blackcap Lady 3042**  
17672266 Hart Blackcap Lady 1215

Sitz Dash 10277 #  
Barstow Queen W16  
CAR Efficient 534 #  
Barstow Miss Dianna X128 #  
Connealy Consensus #  
Bristla of Conanga 927T  
Hoover Dam #  
Hart Blackcap Lady 7150



PRODUCTION EPDs				MATERNAL EPDs			\$ VALUES			
CED	BW	WW	YW	HP	CEM	Milk	\$W	\$F	\$G	\$B
+16	-1.4	+71	+142	+13.2	+14	+22	+66.64	+111.93	+41.20	+176.23
CARCASS		CW	+70 .41	MARB	+73 .36	REA	+73 .36	FAT	-017 .32	

**2**

### Hart Bankroll 7064

Reg: 18940349 Tattoo: 7064 BD: 01/30/17 Bull  
Act. BW 79 lbs Adj. WW 810 lbs WW Ratio 110

Barstow Cash  
**Barstow Bankroll B73**  
18036327 Barstow Miss Dianna Z25

S A V Iron Mountain 8066 #  
**Hart Misti Et 5448**  
18315297 Hart Misti 7017 #

Sitz Dash 10277 #  
Barstow Queen W16  
CAR Efficient 534 #  
Barstow Miss Dianna X128 #  
TC Gridiron 258 #  
S A V Madame Pride 3249  
Mytly In Focus #  
Hart Misti 5054



PRODUCTION EPDs				MATERNAL EPDs			\$ VALUES			
CED	BW	WW	YW	HP	CEM	Milk	\$W	\$F	\$G	\$B
+5	+1.1	+69	+125	+15.4	+7	+28	+69.97	+93.30	+38.17	+154.66
CARCASS		CW	+51 .39	MARB	+58 .34	REA	+52 .34	FAT	-025 .30	



### HART BANKROLL 7064

LOT 2

- Dam's Production: NR 1@110.
- Born unassisted out of a first-calf heifer that posted individual ultrasound measures of IMF ratio 120 and RE ratio 105.
- Sons of the Pathfinder grandam, Hart Misti 7017 have highlighted each recent Hart Farms Sale with two landing in major AI studs. In 2016 sons sold for \$10,000 and \$7500 to Reuer Farm, Hoven SD and Ed Kaehler, Eyota MN respectively. In 2015 her sons were sale features selected by Paul Rydeen, Clearbrook MN at \$9500; Circle R Farms, Correll MN at \$9000; and Barker Cattle, Elba ID at \$8500.
- Recommended for larger heifers and cows.

## Sons of Barstow Bankroll B73



**HART BANKROLL 7024 • LOT 3**

**3 Hart Bankroll 7024**  
 Reg: 18940347 Tattoo: 7024 BD: 01/25/17 Bull  
 Act. BW 67 lbs Adj. WW 830 lbs WW Ratio 113

Barstow Cash  
**Barstow Bankroll B73**  
 18036327 Barstow Miss Dianna Z25

PA Safeguard 021  
**Hart Blackcap Maid 5054**  
 18317453 Hart Miss Precision 4260

Sitz Dash 10277 #  
 Barstow Queen W16  
 CAR Efficient 534 #  
 Barstow Miss Dianna X128 #  
 G A R New Design 5050 #  
 PA Lorna Marshall 2905-730 #  
 C&M Sterling Precision  
 Hart Miss LTD 0018 2346 #

PRODUCTION EPDs				MATERNAL EPDs			\$ VALUES														
CEW	BW	WW	YW	HP	CEM	Milk	\$W	\$F	\$G	\$B											
+6	-1.0	+62	+110	+14.1	+0	+32	+78.74	+65.08	+30.89	+142.76											
CARCASS	CW	MARB	REA	FAT																	
	+54	.39			+35	.34		+90	.35												

- Dam's Production: BR 1@90, NR 1@113.
- Born unassisted out of a first-calf heifer that reported individual performance of WWR 114, YWR 108, IMF ratio 111 and RE ratio 110.
- Maternal grandsire, PA Safeguard 021 is an Angus Sire Alliance graduate that became one of ABS's "Rock Solid Accuracy" sires touting rapid growth, Scrotal, and Docility EPDs as well as a coveted 4-star carcass merit ranking.
- Recommended for heifers and cows.

**4 Hart Bankroll 7144**  
 Reg: 18940357 Tattoo: 7144 BD: 02/07/17 Bull  
 Act. BW 79 lbs Adj. WW 776 lbs WW Ratio 106

Barstow Cash  
**Barstow Bankroll B73**  
 18036327 Barstow Miss Dianna Z25

S A V Iron Mountain 8066 #  
**Hart SKY Lady 2241**  
 17403477 Hart Miss Right Time 3499

Sitz Dash 10277 #  
 Barstow Queen W16  
 CAR Efficient 534 #  
 Barstow Miss Dianna X128 #  
 TC Gridiron 258 #  
 S A V Madame Pride 3249  
 Pine Creek Right Time 1147 #  
 Hart Lady Kincaid 9055

PRODUCTION EPDs				MATERNAL EPDs			\$ VALUES													
CEW	BW	WW	YW	HP	CEM	Milk	\$W	\$F	\$G	\$B										
+9	-0.3	+80	+149	+12.4	+11	+10	+57.29	+124.99	+28.15	+163.63										
CARCASS	CW	MARB	REA	FAT																
	+64	.37			+44	.32		+54	.32											

- He recorded the #2 highest YW EPD in the bull offering and enjoys WW and YW EPDs in the top 1% of non-parent bulls in the breed. His dam was recruited for the Hart Farms breeding program after posting individual performance of WWR 121 and YWR 117.
- His maternal sister was selected by G Bar Genetics, Bowdle SD.
- Recommended for heifers and cows.



**HART BANKROLL 7207 • LOT 5**

**5 Hart Bankroll 7207**  
 Reg: 18940359 Tattoo: 7207 BD: 02/10/17 Bull  
 Act. BW 80 lbs Adj. WW 765 lbs WW Ratio 104

Barstow Cash  
**Barstow Bankroll B73**  
 18036327 Barstow Miss Dianna Z25

Hart Mountaineer 1176  
**Hart Whitney 4166**  
 17988295 Hart Whitney 0244 #

Sitz Dash 10277 #  
 Barstow Queen W16  
 CAR Efficient 534 #  
 Barstow Miss Dianna X128 #  
 S A V Iron Mountain 8066 #  
 Hart Misti 7017 #  
 Hoover Dam #  
 Westwind Whitney J L H 957

PRODUCTION EPDs				MATERNAL EPDs			\$ VALUES													
CEW	BW	WW	YW	HP	CEM	Milk	\$W	\$F	\$G	\$B										
+9	+0.8	+60	+108	+14.7	+10	+24	+59.04	+75.97	+35.80	+133.00										
CARCASS	CW	MARB	REA	FAT																
	+38	.37			+54	.32		+52	.32											

- Dam's Production: BR 2@93, NR 2@103, YR 1@99.
- His 2016 maternal sister by Connealy Capitalist 028 posted a BWR 85, WWR 102, IMF ratio 116, RE ratio 113 and was systematically returned to the herd.
- Recommended for heifers and cows.

**6 Hart Bankroll 7227**  
 Reg: 18940362 Tattoo: 7227 BD: 02/11/17 Bull  
 Act. BW 87 lbs Adj. WW 802 lbs WW Ratio 109

Barstow Cash  
**Barstow Bankroll B73**  
 18036327 Barstow Miss Dianna Z25

Connealy Stimulus 8419 #  
**Hart Miss Rosella 2127 #**  
 17407461 Hart Miss New Design 6203

Sitz Dash 10277 #  
 Barstow Queen W16  
 CAR Efficient 534 #  
 Barstow Miss Dianna X128 #  
 H A Power Alliance 1025 #  
 Black Cressa of Conanga 5332  
 S A V New Design 3143 #  
 Hart Miss Sleep Tight 0174 #

PRODUCTION EPDs				MATERNAL EPDs			\$ VALUES													
CEW	BW	WW	YW	HP	CEM	Milk	\$W	\$F	\$G	\$B										
+10	+0.6	+73	+129	+11.5	+9	+26	+74.64	+90.82	+34.55	+153.94										
CARCASS	CW	MARB	REA	FAT																
	+57	.41			+37	.36		+80	.36											

- Dam's Production: NR 4@110, YR 3@102.
- His Pathfinder dam produced one herd replacement, a \$7000 herd sire for Reuer Farm, Hoven SD in 2016, and the \$8000 selection of William Grismer, Hosmer SD in 2015.
- He ranks in the top 3% for both WW and YW EPDs among non-parent bulls.



**HART PENDLETON 4156**  
 \$8000 Maternal brother to Lot 6 selected by William Grismer, Hosmer, SD

## Flushmate sons of Basin Payweight 1682



### HART PAYWEIGHT ET 7518

LOT 7

- His donor dam, Hart Sandra 4024 earned her way to the donor pen at Hart Angus farm with individual performance of WWR 114, YWR 117 and RE ratio 121. Five sons will be offered in the 2018 sale offering.
- He shares the #2 highest WW and YW EPDs and posts the #2 highest \$W value in the bull offering.
- Flush brother sells as lot 8.

**VIEW VIDEOS  
ONLINE AT  
WWW.DVAUCTION.COM**

### 7 Hart Payweight Et 7518

Reg: +18942312 Tattoo: 7518 BD: 02/03/17 Bull  
Act. BW 86 lbs Adj. WW 820 lbs WW Ratio 100

Basin Payweight 006S #  
**Basin Payweight 1682**  
17038724 21AR O Lass 7017

Hilltop Open Range 2279  
**Hart Sandra 4024**  
17988250 Hart Sandra 2123

Vermilion Payweight J847 #  
Basin Lucy 3829  
HARB Pendleton 765 J H #  
21AR O Lass F24A  
Sitz Identity 7828  
HT Hazel GP 97  
Sitz Upward 307R #  
Hart Sandra 5901



PRODUCTION EPDs				MATERNAL EPDs			\$ VALUES				
CED	BW	WW	YW	HP	CEM	Milk	\$W	\$F	\$G	\$B	
+9	+2.1	+86	+149	+8.8	+9	+21	+87.99	+116.45	+24.05	+155.04	
CARCASS	CW	+64	.40	MARB	+38	.37	REA	+61	.37	FAT	+017 .33

### 8 Hart Payweight Et 7514

Reg: +18942311 Tattoo: 7514 BD: 02/05/17 Bull  
Act. BW 92 lbs Adj. WW 816 lbs WW Ratio 100

Basin Payweight 006S #  
**Basin Payweight 1682**  
17038724 21AR O Lass 7017

Hilltop Open Range 2279  
**Hart Sandra 4024**  
17988250 Hart Sandra 2123

Vermilion Payweight J847 #  
Basin Lucy 3829  
HARB Pendleton 765 J H #  
21AR O Lass F24A  
Sitz Identity 7828  
HT Hazel GP 97  
Sitz Upward 307R #  
Hart Sandra 5901



PRODUCTION EPDs				MATERNAL EPDs			\$ VALUES				
CED	BW	WW	YW	HP	CEM	Milk	\$W	\$F	\$G	\$B	
+1	+4.0	+83	+146	+11.2	+10	+28	+80.72	+124.85	+28.24	+173.48	
CARCASS	CW	+67	.40	MARB	+45	.37	REA	+70	.37	FAT	+013 .33



### HART PAYEIGHT ET 7514

LOT 8

- He recorded the 5th highest YW EPD in the sale offering and, like his flush brother, posts WW and YW EPDs and \$W in the top 1% of non-parent bulls in the breed.
- His sire, Basin Payweight 1682 sired the \$40,000 top-selling female of the 2018 National Western Foundation Female Sale.
- Flush brother sells as lot 7.

## Flushmate brothers from the maternal sister to Commando



**HART PAYEIGHT ET 7506 • LOT 9**



**RIVERBEND YOUNG LUCY W1470**

Grandam of lot 9

- Dam's Production: BR 2@87, NR 2@104..
- The donor dam of lots 9 and 10 is a maternal sister to the highly acclaimed Genex calving ease sire, EF Commando 1366. Angus aficionados will know that "Commando" was used enthusiastically in the Baldrige program where he sired the \$157,000 breed sensation, Baldrige Bronc to Mile High Angus/Select Sires, the \$150,000 Baldrige Commando CO36 to ABS Global and the \$100,000 Baldrige 38 Special, selected by Hoover Angus and Alta Genetics.
- He ranks in the top 5% for CED EPD.
- Recommended for heifers and cows.

### 9 Hart Payweight Et 7506

Reg: +18942330 Tattoo: 7506 BD: 01/31/17 Bull  
Act. BW 86 lbs Adj. WW 787 lbs WW Ratio 100

Basin Payweight 006S #  
**Basin Payweight 1682**  
17038724 21AR O Lass 7017

PA Power Tool 9108 #  
**EF Lucy 3054**  
17625525 Riverbend Young Lucy W1470

Vermilion Payweight J847 #  
Basin Lucy 3829  
HARB Pendleton 765 J H #  
21AR O Lass F24A  
G A R Predestined #  
Shamrocks Beebee Queen 3095  
B/R Ambush 28 #  
Riverbend Young Lucy T1080



PRODUCTION EPDs				MATERNAL EPDs			\$ VALUES				
CED	BW	WW	YW	HP	CEM	Milk	\$W	\$F	\$G	\$B	
+13	+0.8	+60	+105	+8.4	+15	+27	+68.17	+57.88	+41.77	+125.23	
<b>CARCASS</b>	<b>CW</b>	+38	.40	<b>MARB</b>	+88	.37	<b>REA</b>	+40	.36	<b>FAT</b>	+030 .33

### 10 Hart Payweight Et 7519

Reg: +18945465 Tattoo: 7519 BD: 02/07/17 Bull  
Act. BW 94 lbs Adj. WW 778 lbs WW Ratio 100

Basin Payweight 006S #  
**Basin Payweight 1682**  
17038724 21AR O Lass 7017

PA Power Tool 9108 #  
**EF Lucy 3054**  
17625525 Riverbend Young Lucy W1470

Vermilion Payweight J847 #  
Basin Lucy 3829  
HARB Pendleton 765 J H #  
21AR O Lass F24A  
G A R Predestined #  
Shamrocks Beebee Queen 3095  
B/R Ambush 28 #  
Riverbend Young Lucy T1080



PRODUCTION EPDs				MATERNAL EPDs			\$ VALUES				
CED	BW	WW	YW	HP	CEM	Milk	\$W	\$F	\$G	\$B	
+8	+0.3	+72	+128	+5.7	+11	+34	+84.74	+91.54	+45.97	+177.56	
<b>CARCASS</b>	<b>CW</b>	+65	.41	<b>MARB</b>	+1.13	.37	<b>REA</b>	+75	.37	<b>FAT</b>	+034 .34



**HART PAYEIGHT ET 7519 • LOT 10**



**EF COMMANDO 1366**

Maternal brother to the dam of lots 9 and 10

- Dam's Production: BR 2@87, NR 2@104.
- He recorded the 4th highest \$W value and the #5 highest \$B value in the bull offering. Moreover, he ranks in the top 3% for both WW and YW EPD as well as the top 1% \$W and top 2% \$B among non-parent bulls.
- Maternal grandsire, PA Power Tool 9108 is a Genex growth and carcass trait sire with top 1% \$W value and Pathfinder status.

## Sons of Basin Payweight 1682



Hart

**HART PAYWEIGHT 7069 • LOT 11**



**HART TEN X ET 3416**

\$16,500 Top selling maternal brother to Lot 12  
selected by Evans Farms, TX

**60% OF THE SALE OFFERING  
IS SUITABLE FOR HEIFERS**



Hart

**HART PAYWEIGHT 7068 • LOT 13**

**11**

## Hart Payweight 7069

Reg: 18942287    Tattoo: 7069    BD: 01/31/17    Bull  
Act. BW 80 lbs    Adj. WW 842 lbs    WW Ratio 115

Basin Payweight 006S #  
**Basin Payweight 1682**  
17038724    21AR O Lass 7017

E&B Blackjack 321  
**Hart Blackcap Lady 5285**  
18313003    Hart Blackcap Lady 1800 #

Vermilion Payweight J847 #  
Basin Lucy 3829  
HARB Pendleton 765 J H #  
21AR O Lass F24A  
Connealy Consensus 7229 #  
E&B Lady New Frontier 654 #  
Sitz Upward 307R #  
Hart Miss Precision 5733



PRODUCTION EPDs				MATERNAL EPDs			\$ VALUES						
CED	BW	WW	YW	HP	CEM	Milk	\$W	\$F	\$G	\$B			
+0	+4.6	+91	+166	+8.4	+3	+26	+78.85	+154.08	+22.24	+183.02			
CARCASS		CW	+82	.40	MARB	+32	.36	REA	+76	.36	FAT	-.003	.32

- Dam's Production: NR 1@115.
- Born unassisted out of a first-calf heifer that gained her admittance into the Hart Angus breeding program with individual performance of WWR 111, YWR 104, IMF ratio 115, RE ratio 100, Rib Fat ratio 100 and Rump Fat ratio 86.
- He posted the #1 WW and YW EPDs, and the #2 \$B value in the bull offering ranking in the top 1% of the breed for those traits as well as the top 2% for \$W.

**12**

## Hart Payweight Et 7582

Reg: +18913866    Tattoo: 7582    BD: 03/05/17    Bull  
Act. BW 65 lbs    Adj. WW 823 lbs    WW Ratio 100

Basin Payweight 006S #  
**Basin Payweight 1682**  
17038724    21AR O Lass 7017

WAR Rito S109 112 9009  
**Hart Miss Rito S109 8006**  
16215978    Hart Miss LTD 0018 6595

Vermilion Payweight J847 #  
Basin Lucy 3829  
HARB Pendleton 765 J H #  
21AR O Lass F24A  
Rito 112 of 2536 Rito 616 #  
WAR Advantage 9009 7121 #  
S A F Ltd 0018  
Hart Miss Right Time 2486



PRODUCTION EPDs				MATERNAL EPDs			\$ VALUES						
CED	BW	WW	YW	HP	CEM	Milk	\$W	\$F	\$G	\$B			
+3	+2.5	+70	+117	+9.3	+6	+20	+67.39	+72.61	+32.21	+144.18			
CARCASS		CW	+53	.40	MARB	+47	.37	REA	+71	.37	FAT	+012	.33

- Dam's Production: NR 6@106, YR 5@105.
- An embryo transplant son of Payweight from an accomplished Hart Farms donor that has been in the donor pen since 2012 producing 16 registered sons for Brad and Alex Hart's best customers.
- Sons of the Hart Angus Farms donor dam, Hart Miss Rito S109 8006 include herd sire selections made by John Berdo, Washington, IA and Terry Reuer, Hoven SD in the 2017 and 2016 sales, an \$8000 bull in the 2015 sale selected by McCormick Ranch, Bismarck SD, a \$7000 son chosen by Reuer Farms Inc, Hoven SD also in 2015, one that sold to Ron Demers of Colome, SD for \$11,000 in the '12 sale as well as one for Wayne and Marlon Steinwand of Edgeley, ND at \$3000 in '13 sale.
- Maternal brother sells as Lot 49.

**13**

## Hart Payweight 7068

Reg: 18942288    Tattoo: 7068    BD: 01/31/17    Bull  
Act. BW 76 lbs    Adj. WW 814 lbs    WW Ratio 111

Basin Payweight 006S #  
**Basin Payweight 1682**  
17038724    21AR O Lass 7017

Hilltop Open Range 2279  
**Hart Blackcap Maid 5022**  
18312914    Hart Blackcap Maid 3354

Vermilion Payweight J847 #  
Basin Lucy 3829  
HARB Pendleton 765 J H #  
21AR O Lass F24A  
Sitz Identity 7828  
HT Hazel GP 97  
H A R B Icon 019  
Hart Blackcap Maid 9300 #



PRODUCTION EPDs				MATERNAL EPDs			\$ VALUES						
CED	BW	WW	YW	HP	CEM	Milk	\$W	\$F	\$G	\$B			
+7	+2.8	+77	+144	+12.6	+12	+25	+71.93	+116.80	+19.83	+155.74			
CARCASS		CW	+66	.41	MARB	+52	.36	REA	+46	.36	FAT	+063	.32

- Dam's Production: NR 1@111.
- Born unassisted out of a first-calf heifer that recorded individual performance of WWR 104, YWR 108, RE ratio 107, Rib Fat ratio 81 and Rump Fat ratio 86.
- Maternal grandsire, Hilltop Open Range 2279 has proven himself as a sire of astonishing growth and maternal value. He boasts progeny ratios of BR 332@100, WR 325@102, and YR 119@105 while 16 daughters have a collective nursing ratio of 16@101.
- He ranks in the top 2% WW EPD and top 1% YW EPD among non-parent bulls.
- Recommended for heifers and cows.

## Sons of Basin Payweight 1682



**HART PAYWEIGHT ET 7584 • LOT 14**



**HART ICON 3356**  
\$15,000 Maternal brother to Lots 14 and 15



**HART TOUR OF DUTY 5091**  
\$9,500 maternal brother to Lot 16 selected by Jeri Jasken, MN

### 14 Hart Payweight Et 7584

Reg: +18913840 Tattoo: 7584 BD: 03/06/17 Bull  
Act. BW 77 lbs Adj. WW 832 lbs WW Ratio 100

Basin Payweight 006S #  
**Basin Payweight 1682**  
17038724 21AR O Lass 7017

Sitz Upward 307R #  
**Hart Queen Perfecta 0118**  
16815669 Hart Miss Right Time 3624

Vermilion Payweight J847 #  
Basin Lucy 3829  
HARB Pendleton 765 J H #  
21AR O Lass F24A  
Connealy Onward #  
Sitz Henrietta Pride 81M  
Pine Creek Right Time 1147 #  
Hart Queen Ext 7008



PRODUCTION EPDs				MATERNAL EPDs			\$ VALUES					
CED	BW	WW	YW	HP	CEM	Milk	\$W	\$F	\$G	\$B		
-4	+3.9	+57	+104	+10.1	+5	+33	+59.25	+60.09	+25.26	+139.79		
<b>CARCASS</b>	<b>CW</b>	<b>+55</b>	<b>.40</b>	<b>MARB</b>	<b>+35</b>	<b>.37</b>	<b>REA</b>	<b>+56</b>	<b>.37</b>	<b>FAT</b>	<b>+0.07</b>	<b>.33</b>

- Dam's Production: NR 5@117, YR 3@111.
- A maternal brother to the \$15,000 selection of Dikoff Ranch and Jallo Angus from the 2014 Hart Farms Sale as well as the \$7000 choice of Clint Mundell, Walsh, CO in '17 and a \$7000 herdsire choice of Chris McDonald of Leonard, ND in '13 sale.
- Flush brother sells as lot 15.

### 15 Hart Payweight Et 7583

Reg: +18913838 Tattoo: 7583 BD: 03/06/17 Bull  
Act. BW 71 lbs Adj. WW 844 lbs WW Ratio 100

Basin Payweight 006S #  
**Basin Payweight 1682**  
17038724 21AR O Lass 7017

Sitz Upward 307R #  
**Hart Queen Perfecta 0118**  
16815669 Hart Miss Right Time 3624

Vermilion Payweight J847 #  
Basin Lucy 3829  
HARB Pendleton 765 J H #  
21AR O Lass F24A  
Connealy Onward #  
Sitz Henrietta Pride 81M  
Pine Creek Right Time 1147 #  
Hart Queen Ext 7008



PRODUCTION EPDs				MATERNAL EPDs			\$ VALUES					
CED	BW	WW	YW	HP	CEM	Milk	\$W	\$F	\$G	\$B		
+6	+0.9	+58	+115	+7.0	+7	+39	+77.03	+79.12	+13.93	+129.86		
<b>CARCASS</b>	<b>CW</b>	<b>+54</b>	<b>.41</b>	<b>MARB</b>	<b>+35</b>	<b>.38</b>	<b>REA</b>	<b>+29</b>	<b>.38</b>	<b>FAT</b>	<b>+0.07</b>	<b>.34</b>

- Dam's Production: NR 5@117, YR 3@111.
- His full brother was the \$7000 herd sire selection of Clint Mundell, Walsh, CO from the 2017 sale offering.
- He ranks in the top 2% for \$W among non-parent bulls.
- Flush brother sells as lot 14.
- Recommended for heifers and cows.

### 16 Hart Payweight 7254

Reg: 18942372 Tattoo: 7254 BD: 02/15/17 Bull  
Act. BW 86 lbs Adj. WW 766 lbs WW Ratio 104

Basin Payweight 006S #  
**Basin Payweight 1682**  
17038724 21AR O Lass 7017

M A R Midland Empire 3092 #  
**Hart Pamela 7400 #**  
15934542 Hart Pamela 2824

Vermilion Payweight J847 #  
Basin Lucy 3829  
HARB Pendleton 765 J H #  
21AR O Lass F24A  
BR Midland #  
MAR Lass 4T 9141  
Westwind Reknown 26  
Pamela of Westwind 055 #



PRODUCTION EPDs				MATERNAL EPDs			\$ VALUES					
CED	BW	WW	YW	HP	CEM	Milk	\$W	\$F	\$G	\$B		
+3	+1.3	+49	+89	+9.7	+6	+25	+50.69	+46.79	+40.80	+130.58		
<b>CARCASS</b>	<b>CW</b>	<b>+38</b>	<b>.41</b>	<b>MARB</b>	<b>+7.7</b>	<b>.37</b>	<b>REA</b>	<b>+51</b>	<b>.37</b>	<b>FAT</b>	<b>+0.26</b>	<b>.33</b>

- Dam's Production: NR 9@104, YR 6@108.
- His Pathfinder dam has a calving interval of 9@364 days. She gained her admission to the Hart Angus breeding herd with individual performance of WW R 118, YWR 116, IMF ratio 161, RE ratio 105, Rib Fat ratio 92 and Rump Fat ratio 85.
- Each of his three maternal sisters have been retained in the breeding program while his maternal brothers include the \$9500 selection of Jeri Jasken, Ogema MN in 2016, a \$10,000 brother to Reuer Farms, Hoven SD in 2014 and the \$5500 and \$4500 herd sire acquisitions of William Grismer, Hosmer SD and Gary Schlabz, Ashley ND.

### 17 Hart Payweight 7176

Reg: 18942348 Tattoo: 7176 BD: 02/08/17 Bull  
Act. BW 90 lbs Adj. WW 773 lbs WW Ratio 105

Basin Payweight 006S #  
**Basin Payweight 1682**  
17038724 21AR O Lass 7017

Sitz Upward 307R #  
**HRT Traci Et 0016**  
16815666 Hart Traci 3707

Vermilion Payweight J847 #  
Basin Lucy 3829  
HARB Pendleton 765 J H #  
21AR O Lass F24A  
Connealy Onward #  
Sitz Henrietta Pride 81M  
S A V 5175 Bando 1003  
Westwind Traci D J H 945



PRODUCTION EPDs				MATERNAL EPDs			\$ VALUES					
CED	BW	WW	YW	HP	CEM	Milk	\$W	\$F	\$G	\$B		
+5	+0.9	+62	+111	+9.8	+9	+22	+60.29	+67.80	+36.42	+138.09		
<b>CARCASS</b>	<b>CW</b>	<b>+47</b>	<b>.41</b>	<b>MARB</b>	<b>+6.7</b>	<b>.37</b>	<b>REA</b>	<b>+40</b>	<b>.37</b>	<b>FAT</b>	<b>+0.11</b>	<b>.33</b>

- Dam's Production: NR 5@101, YR 3@102.
- His 2015 maternal sister weaned her first calf this year posting a BR 1@98 and NR 1@110. Diamond F Cattle, Cresbard SD and Kevin Horihand, Lansboro MN have maternal brothers as herd sires in their programs.

## Flushmate sons of Basin Payweight 1682



**HART PAYWEIGHT ET 7516**  
LOT 18

- Dam's Production: BR 1@77.
- His grandam was a standout on ultrasound day when she posted an IMF ratio 141, Rib Fat ratio 67 and Rump Fat ratio 94.
- He ranks in the Top 1% for YW EPD and \$W as well as the top 2% for WW EPD and \$B
- Flush brother sells as Lot 19.
- Recommended for heifers and cows.

### 18 Hart Payweight Et 7516

Reg: +18942315 Tattoo: 7516 BD: 02/07/17 Bull  
Act. BW 83 lbs Adj. WW 740 lbs WW Ratio 100

Basin Payweight 006S #  
**Basin Payweight 1682**  
17038724 21AR O Lass 7017

Hilltop Open Range 2279  
**Hart Beauty 4015**  
17988247 Hart Beauty 2519

Vermilion Payweight J847 #  
Basin Lucy 3829  
HARB Pendleton 765 J H #  
21AR O Lass F24A  
Sitz Identity 7828  
HT Hazel GP 97  
JAR Cowboy Up 6162 068  
Hart Beauty 9463



PRODUCTION EPDs				MATERNAL EPDs			\$ VALUES				
CED	BW	WW	YW	HP	CEM	Milk	\$W	\$F	\$G	\$B	
+7	+1.1	+76	+140	+9.8	+10	+30	+80.12	+115.51	+31.76	+173.13	
CARCASS	CW	+67	.39	MARB	+57	.35	REA	+57	.35	FAT	+0.06 .31

### 19 Hart Payweight Et 7507

Reg: +18942314 Tattoo: 7507 BD: 02/06/17 Bull  
Act. BW 80 lbs Adj. WW 709 lbs WW Ratio 100

Basin Payweight 006S #  
**Basin Payweight 1682**  
17038724 21AR O Lass 7017

Hilltop Open Range 2279  
**Hart Beauty 4015**  
17988247 Hart Beauty 2519

Vermilion Payweight J847 #  
Basin Lucy 3829  
HARB Pendleton 765 J H #  
21AR O Lass F24A  
Sitz Identity 7828  
HT Hazel GP 97  
JAR Cowboy Up 6162 068  
Hart Beauty 9463



PRODUCTION EPDs				MATERNAL EPDs			\$ VALUES				
CED	BW	WW	YW	HP	CEM	Milk	\$W	\$F	\$G	\$B	
+8	+0.2	+56	+114	+4.6	+12	+31	+60.91	+85.92	+31.53	+143.57	
CARCASS	CW	+47	.38	MARB	+69	.35	REA	+31	.35	FAT	+0.41 .31



**HART PAYWEIGHT ET 7507 • LOT 19**



**HILLTOP OPEN RANGE**  
Maternal grandsire of lots 18 and 19

- Dam's Production: BR 1@77.
- His donor dam entered the Hart Angus Farm ET program after she posted individual performance highlighted by a BWR 94, WWR 108, YWR 109 and RE ratio 118.
- 2016-born maternal sisters by "Resource" are retained in the replacement herd.
- Flush brother sells as lot 18.
- Recommended for heifers and cows.



## Sons of Basin Payweight 1682

### 20 Hart Payweight Et 7515

Reg: +18942300 Tattoo: 7515 BD: 02/14/17 Bull  
Act. BW 80 lbs Adj. WW 781 lbs WW Ratio 100

Basin Payweight 006S #  
**Basin Payweight 1682**  
17038724 21AR O Lass 7017

V A R Discovery 2240  
**DSA Discovery SJH 2705 1502**  
18106474 SJH Consensus of 9360 2705

Vermilion Payweight J847 #  
Basin Lucy 3829  
HARB Pendleton 765 J H #  
21AR O Lass F24A  
A A R Ten X 7008 S A #  
Deer Valley Rita 0308  
Connealy Consensus 7229 #  
2 Bar Mile High 9360



PRODUCTION EPDs				MATERNAL EPDs			\$ VALUES					
CEB	BW	WW	YW	HP	CEM	Milk	\$W	\$F	\$G	\$B		
+8	+0.0	+68	+119	+7.5	+6	+36	+82.97	+91.68	+43.21	+147.98		
<b>CARCASS</b>	<b>CW</b>	<b>+40</b>	<b>.41</b>	<b>MARB</b>	<b>+88</b>	<b>.38</b>	<b>REA</b>	<b>+39</b>	<b>.37</b>	<b>FAT</b>	<b>+014</b>	<b>.34</b>

- His donor dam is a balanced trait donor ranking in the top 15% or better for 12 EPD and \$value traits. She gained national acclaim as the \$17,000 top-selling open heifer at the 2016 Dan Strong Angus sale in Kansas. Her dam SJH Consensus of 9360 2705 sold through the PDF Sale for \$30,000 where a full sister to "1502" brought \$29,000.
- Flush brother sells as Lot 21.
- Recommended for heifers and cows.

### 21 Hart Payweight Et 7501

Reg: +18942299 Tattoo: 7501 BD: 02/17/17 Bull  
Act. BW 86 lbs Adj. WW 753 lbs WW Ratio 100

Basin Payweight 006S #  
**Basin Payweight 1682**  
17038724 21AR O Lass 7017

V A R Discovery 2240  
**DSA Discovery SJH 2705 1502**  
18106474 SJH Consensus of 9360 2705

Vermilion Payweight J847 #  
Basin Lucy 3829  
HARB Pendleton 765 J H #  
21AR O Lass F24A  
A A R Ten X 7008 S A #  
Deer Valley Rita 0308  
Connealy Consensus 7229 #  
2 Bar Mile High 9360



PRODUCTION EPDs				MATERNAL EPDs			\$ VALUES					
CEB	BW	WW	YW	HP	CEM	Milk	\$W	\$F	\$G	\$B		
+6	+0.7	+67	+123	+7.0	+7	+32	+76.46	+89.87	+38.59	+143.96		
<b>CARCASS</b>	<b>CW</b>	<b>+45</b>	<b>.40</b>	<b>MARB</b>	<b>+67</b>	<b>.37</b>	<b>REA</b>	<b>+45</b>	<b>.37</b>	<b>FAT</b>	<b>+002</b>	<b>.33</b>

- The donor dam gained national acclaim as the \$17,000 top-selling open heifer at the 2016 Dan Strong Angus sale in Kansas. Her dam SJH Consensus of 9360 2705 sold through the PDF Sale for \$30,000 where a full sister to "1502" brought \$29,000.
- He ranks in the top 5% YW EPD and top 2% \$W value among non-parent bulls.
- Flush brother sells as Lot 20.
- Recommended for larger heifers and cows.

### 22 Hart Payweight Et 7500

Reg: +18942318 Tattoo: 7500 BD: 02/18/17 Bull  
Act. BW 95 lbs Adj. WW 723 lbs WW Ratio 100

Basin Payweight 006S #  
**Basin Payweight 1682**  
17038724 21AR O Lass 7017

Rito 9013 of Rita 5F56 GHM  
**BJ 9Q13 Rito 4021**  
17914150 G A R Daybreak M721

Vermilion Payweight J847 #  
Basin Lucy 3829  
HARB Pendleton 765 J H #  
21AR O Lass F24A  
Gardens Highmark #  
Rita 5F56 of 1198 FD  
MCC Daybreak #  
G A R Objective 2827



PRODUCTION EPDs				MATERNAL EPDs			\$ VALUES					
CEB	BW	WW	YW	HP	CEM	Milk	\$W	\$F	\$G	\$B		
+5	+2.2	+75	+133	+7.0	+11	+29	+78.59	+107.95	+39.82	+183.96		
<b>CARCASS</b>	<b>CW</b>	<b>+67</b>	<b>.40</b>	<b>MARB</b>	<b>+70</b>	<b>.37</b>	<b>REA</b>	<b>+92</b>	<b>.37</b>	<b>FAT</b>	<b>+016</b>	<b>.33</b>

- His donor dam came to Hart Angus Farm as the \$28,500 top-seller of the 2015 BJ Angus Sale in Kansas. She is in-fact a full sister to the ABS calving ease and "4 star" carcass trait sire, 2 Bar Partner 3540.
- He ranks in the top 2% or better for WW and YW EPDs, as well as, \$W and \$B. at +183.96, he is the #1 \$B in the sale offering.

### 23 Hart Payweight 7066

Reg: 18942285 Tattoo: 7066 BD: 01/31/17 Bull  
Act. BW 68 lbs Adj. WW 761 lbs WW Ratio 104

Basin Payweight 006S #  
**Basin Payweight 1682**  
17038724 21AR O Lass 7017

E&B Blackjack 321  
**Queen of Harts 5322**  
18313020 Queen of Harts 8514

Vermilion Payweight J847 #  
Basin Lucy 3829  
HARB Pendleton 765 J H #  
21AR O Lass F24A  
Connealy Consensus 7229 #  
E&B Lady New Frontier 654 #  
Hart Precision 5913 #  
Hart Lady Empire 5107



PRODUCTION EPDs				MATERNAL EPDs			\$ VALUES					
CEB	BW	WW	YW	HP	CEM	Milk	\$W	\$F	\$G	\$B		
+16	+2.3	+46	+98	+6.1	+10	+38	+65.49	+65.82	+42.04	+137.74		
<b>CARCASS</b>	<b>CW</b>	<b>+39</b>	<b>.40</b>	<b>MARB</b>	<b>+84</b>	<b>.35</b>	<b>REA</b>	<b>+49</b>	<b>.35</b>	<b>FAT</b>	<b>+027</b>	<b>.31</b>

- Dam's Production: BR 1@92, NR 1@104.
- Born unassisted out of a first-calf heifer. Her sire, E&B Blackjack 321 was the top-valued bull of the 2014 Benoit Angus Ranch Sale selected by Hart Farms at \$17,000 2/3 interest. He posted individual performance in that offering of BWR 101, WWR 109, YWR 122 (1605 lbs), IMF ratio 117 and RE ratio 115.
- He shares the #1 highest CED EPD and the #1 lowest BW EPD in the bull offering ranking in the top 1% and 2% respectively among non-parent bulls in the breed.
- Recommended for heifers and cows.



**DSA DISCOVERY SJH 2705**

Donor dam to Lot 21 as a \$17,000 heifer calf.



**2 BAR PARTNER 3540**

ABS carcass trait sire and full brother to the dam of lot 22

## Sons of Quaker Hill Rampage 0A36



**HART RAMPAGE 7213 • LOT 24**

**24** Hart Rampage 7213  
 Reg: 18942292 Tattoo: 7213 BD: 02/10/17 Bull  
 Act. BW 92 lbs Adj. WW 856 lbs WW Ratio 116

MCC Daybreak #  
**Quaker Hill Rampage 0A36**  
 16925771 QHF Blackcap 6E2 of 4V16 4355

Sitz Upward 307R #  
**Hart Whitney Et 0018**  
 16815672 Hart Whitney 204

Boyd New Day 8005 #  
 MCC Miss Focus 134 #  
 Ideal 4355 of 0T26 2440  
 QHF Blackcap 4V16 of 1H8  
 Connealy Onward #  
 Sitz Henrietta Pride 81M  
 T Lite of Westwind 859  
 Westwind Whitney J L H 954



PRODUCTION EPDs				MATERNAL EPDs			\$ VALUES					
CED	BW	WW	YW	HP	CEM	Milk	\$W	\$F	\$G	\$B		
+8	+3.2	+85	+139	+13.0	+10	+15	+73.14	+103.42	+42.92	+180.22		
<b>CARCASS</b>	<b>CW</b>	<b>+68</b>	<b>.41</b>	<b>MARB</b>	<b>+67</b>	<b>.36</b>	<b>REA</b>	<b>+1.04</b>	<b>.36</b>	<b>FAT</b>	<b>-0.08</b>	<b>.33</b>

- Dam's Production: NR 6@101, YR 4@103.
- Collin Eichler, Columbia SD selected a \$4000 maternal brother in 2016 and Tyler Burton, Redfield SD bought a brother in 2017.
- He shares the #4 highest WW EPD and the #3 highest \$B in the bull offering ranking in the top 1% for WW, YW and \$B values.
- He recorded the #3 heaviest 205 day wt in the sale offering.
- Maternal brothers sell as Lots 14, 15, and 39.

**25** Hart Rampage 7232  
 Reg: 18942261 Tattoo: 7232 BD: 02/11/17 Bull  
 Act. BW 76 lbs Adj. WW 779 lbs WW Ratio 106

MCC Daybreak #  
**Quaker Hill Rampage 0A36**  
 16925771 QHF Blackcap 6E2 of 4V16 4355

H A R B Icon 019  
**Hart Zara Lady 3286**  
 17672324 Hart Miss New Design 5153

Boyd New Day 8005 #  
 MCC Miss Focus 134 #  
 Ideal 4355 of 0T26 2440  
 QHF Blackcap 4V16 of 1H8  
 S A V Final Answer 0035 #  
 H A R B Belle Nellie 702-707  
 S A V New Design 3143 #  
 Hart Miss LTD 0018 2267



PRODUCTION EPDs				MATERNAL EPDs			\$ VALUES					
CED	BW	WW	YW	HP	CEM	Milk	\$W	\$F	\$G	\$B		
+8	+1.8	+74	+117	+9.3	+11	+22	+78.25	+68.84	+43.27	+147.35		
<b>CARCASS</b>	<b>CW</b>	<b>+49</b>	<b>.40</b>	<b>MARB</b>	<b>+65</b>	<b>.36</b>	<b>REA</b>	<b>+80</b>	<b>.36</b>	<b>FAT</b>	<b>-0.15</b>	<b>.32</b>

- Dam's Production: BR 3@95, YR 1@105.
- His maternal brother was the \$5500 selection of Dan Rahja, Frederick SD from the 2016 sale offering.
- He ranks in the top 2% for WW EPD and \$W value among non-parent bulls.
- Recommended for heifers and cows.

**HART CASH 5023**

\$5500 maternal brother to Lot 25 selected by Dan Rahja, Frederick, SD



**26** Hart Rampage 7150

Reg: 18942280 Tattoo: 7150 BD: 02/07/17 Bull  
 Act. BW 72 lbs Adj. WW 727 lbs WW Ratio 99

MCC Daybreak #  
**Quaker Hill Rampage 0A36**  
 16925771 QHF Blackcap 6E2 of 4V16 4355

S A V John Wayne 6220  
**Hart Lady 2547**  
 17402899 Hart Miss New Design 6722

Boyd New Day 8005 #  
 MCC Miss Focus 134 #  
 Ideal 4355 of 0T26 2440  
 QHF Blackcap 4V16 of 1H8  
 CAR Duke 104 #  
 S A V Bessie Queen 4106  
 S A V New Design 3143 #  
 Hart Miss Rhinestone 7543



PRODUCTION EPDs				MATERNAL EPDs			\$ VALUES					
CED	BW	WW	YW	HP	CEM	Milk	\$W	\$F	\$G	\$B		
+15	-0.9	+49	+84	+13.7	+13	+24	+49.78	+36.87	+18.43	+72.06		
<b>CARCASS</b>	<b>CW</b>	<b>+22</b>	<b>.39</b>	<b>MARB</b>	<b>+15</b>	<b>.34</b>	<b>REA</b>	<b>+38</b>	<b>.34</b>	<b>FAT</b>	<b>+0.14</b>	<b>.30</b>

- Dam's Production: BR 4@98, NR 4@100, YR 2@99.
- His dam posted individual performance of BWR 82, WWR 104, YWR 104 and received her invitation to join the Hart Farms breeding herd.
- He shares the #3 highest CED in the bull offering ranking in the top 2% for the trait.
- His maternal sister in this herd weaned her first calf posting a BR 1@96 and NR 1@107.
- Recommended for heifers and cows.

**27** Hart Rampage 7059

Reg: 18942234 Tattoo: 7059 BD: 01/30/17 Bull  
 Act. BW 64 lbs Adj. WW 724 lbs WW Ratio 99

MCC Daybreak #  
**Quaker Hill Rampage 0A36**  
 16925771 QHF Blackcap 6E2 of 4V16 4355

Musgrave Mel  
**Hart Whitney 5096**  
 18312921 Hart Whitney 7050

Boyd New Day 8005 #  
 MCC Miss Focus 134 #  
 Ideal 4355 of 0T26 2440  
 QHF Blackcap 4V16 of 1H8  
 MCATL Pure Product 903-55 #  
 MCATL Lady Barbara 1079-295  
 S A V 8180 Traveler 004 #  
 Westwind Whitney J L H 014



PRODUCTION EPDs				MATERNAL EPDs			\$ VALUES					
CED	BW	WW	YW	HP	CEM	Milk	\$W	\$F	\$G	\$B		
+10	+0.0	+59	+99	+10.6	+13	+22	+62.44	+50.79	+35.73	+99.81		
<b>CARCASS</b>	<b>CW</b>	<b>+28</b>	<b>.39</b>	<b>MARB</b>	<b>+55</b>	<b>.35</b>	<b>REA</b>	<b>+51</b>	<b>.35</b>	<b>FAT</b>	<b>+0.27</b>	<b>.31</b>

- Dam's Production: BR 1@87, NR 1@99.
- Born unassisted out of a first-calf heifer.
- Maternal grandsire, Musgrave Mel was selected by Hart Angus Farms as the \$32,500 top-selling bull of the Musgrave Angus Sale where he conquered his contemporaries with individual performance highlighted by a BWR 89, WWR 105, YWR 111, IMF ratio 138, and REA ratio 101.
- Recommended for heifers and cows.



**MUSGRAVE MEL**  
 Maternal sire of lot 27



**HART RAMPAGE 7232 • LOT 25**

## Flushmate Sons of Quaker Hill Rampage 0A36



### HART RAMPAGE ET 7581 • LOT 28

**28 Hart Rampage Et 7581**  
 Reg: +18913882 Tattoo: 7581 BD: 03/04/17 Bull  
 Act. BW 65 lbs Adj. WW 816 lbs WW Ratio 100

MCC Daybreak #  
**Quaker Hill Rampage 0A36**  
 16925771 QHF Blackcap 6E2 of 4V16 4355

Mytty In Focus #  
**Hart Misti 7017 #**  
 15942577 Hart Misti 5054

Boyd New Day 8005 #  
 MCC Miss Focus 134 #  
 Ideal 4355 of 0T26 2440  
 QHF Blackcap 4V16 of 1H8  
 S A F Focus of E R #  
 Mytty Countess 906  
 WAR Alliance 9126 6006 #  
 Westwind Misti D J H 007



PRODUCTION EPDs				MATERNAL EPDs			\$ VALUES			
CED	BW	WW	YW	HP	CEM	Milk	\$W	\$F	\$G	\$B
+10	+2.2	+80	+136	+12.4	+13	+24	+79.97	+109.40	+46.60	+165.83
CARCASS		CW	+49 .41	MARB	+69 .38	REA	+88 .38	FAT	-027 .34	

- Dam's Production: BR 5@97, NR 5@110, YR 5@106.
- Hart Misti 7017 has earned Pathfinder status with natural progeny ratios of BR 5@97, NR 5@110 and YR 5@106. Her 42 ultrasound progeny record an average IMF ratio 108, RE ratio 101, Fat ratio 99 and Rump fat ratio 99.
- He ranks in the top 1% for WW and YW EPDs, as well as, \$W value among non-parent bulls.
- Recommended for heifers and cows.



**HART MOUNTAINEER 1176**  
 \$27,000 Maternal brother to Lots 28, 29, and 30.

**29 Hart Rampage Et 7559**  
 Reg: +18913826 Tattoo: 7559 BD: 02/28/17 Bull  
 Act. BW 68 lbs Adj. WW 818 lbs WW Ratio 100

MCC Daybreak #  
**Quaker Hill Rampage 0A36**  
 16925771 QHF Blackcap 6E2 of 4V16 4355

Mytty In Focus #  
**Hart Misti 7017 #**  
 15942577 Hart Misti 5054

Boyd New Day 8005 #  
 MCC Miss Focus 134 #  
 Ideal 4355 of 0T26 2440  
 QHF Blackcap 4V16 of 1H8  
 S A F Focus of E R #  
 Mytty Countess 906  
 WAR Alliance 9126 6006 #  
 Westwind Misti D J H 007



PRODUCTION EPDs				MATERNAL EPDs			\$ VALUES			
CED	BW	WW	YW	HP	CEM	Milk	\$W	\$F	\$G	\$B
+12	+1.3	+76	+125	+11.6	+11	+23	+77.11	+84.68	+40.84	+141.60
CARCASS		CW	+44 .39	MARB	+58 .36	REA	+79 .36	FAT	-007 .32	

- Dam's Production: BR 5@97, NR 5@110, YR 5@106.
- Sons of Hart Misti 7017 have highlighted each recent Hart Farms Sale with two landing in major AI studs. In 2016 sons sold for \$10,000 and \$7500 to Reuer Farm, Hoven SD and Ed Kaehler, Eyota MN respectively. In 2015 her sons were sale features selected by Paul Rydeen, Clearbrook MN at \$9500; Circle R Farms, Correll MN at \$9000; and Barker Cattle, Elba ID at \$8500.
- He posts a WW EPD in the top 2%, YW EPD in the top 4% and \$W value in the top 2% of non-parent bulls in the breed.
- Recommended for heifers and cows.

**30 Hart Rampage Et 7573**  
 Reg: +18913879 Tattoo: 7573 BD: 03/02/17 Bull  
 Act. BW 83 lbs Adj. WW 833 lbs WW Ratio 100

MCC Daybreak #  
**Quaker Hill Rampage 0A36**  
 16925771 QHF Blackcap 6E2 of 4V16 4355

Mytty In Focus #  
**Hart Misti 7017 #**  
 15942577 Hart Misti 5054

Boyd New Day 8005 #  
 MCC Miss Focus 134 #  
 Ideal 4355 of 0T26 2440  
 QHF Blackcap 4V16 of 1H8  
 S A F Focus of E R #  
 Mytty Countess 906  
 WAR Alliance 9126 6006 #  
 Westwind Misti D J H 007



PRODUCTION EPDs				MATERNAL EPDs			\$ VALUES			
CED	BW	WW	YW	HP	CEM	Milk	\$W	\$F	\$G	\$B
+9	+2.1	+85	+139	+14.5	+11	+22	+84.33	+105.75	+40.32	+164.65
CARCASS		CW	+56 .41	MARB	+77 .38	REA	+71 .38	FAT	+023 .34	

- Dam's Production: BR 5@97, NR 5@110, YR 5@106.
- Flushmate brother to Lots 28 and 29, and maternal brother to Lots 33,34, 52, 53, 54 55, 83, 84, 85, and 88.
- He shares the #4 highest WW EPD ranking in the top 1% for WW and YW EPDs, as well as, \$W value among non-parent bulls.
- Recommended for heifers and cows.

## Sons of Plattermere Weigh Up K360



### HART WEIGH UP 7140

LOT 31

- Dam's Production: NR 3@108, YR 1@104.
- His dam, sired by the \$92,000 Connealy Cavalry 1149, posted individual performance highlighted by a WWR 106, YWR 106 and RE ratio 103.
- A maternal sister by Baldrige Jennings Z064 has been retained in the herd after she posted a WWR 105, YWR 104 and an astonishing IMF ratio 152.
- He shares the #2 highest WW EPD and the #4 highest \$B value in the herd after she posted a WWR 105, YWR 104 and an astonishing IMF ratio 152.
- He ranks in the top 1% for both WW and YW EPDs and \$B value.

**31**

### Hart Weigh Up 7140

Reg: 18940638 Tattoo: 7140 BD: 02/06/17 Bull  
Act. BW 83 lbs Adj. WW 796 lbs WW Ratio 108

Sitz Upward 307R #  
**Plattermere Weigh Up K360**  
16692552 Barbara of Plattermere 337

Connealy Cavalry 1149  
**Hart Pamela 3232**  
17672307 Hart Pamela 4110 #

Connealy Onward #  
Sitz Henrietta Pride 81M  
G A R Retail Product #  
Barbara of Plattermere 311  
Connealy Consensus #  
Brista of Conanga 927T  
M G S A 9440 Scotch Cap 923  
Pamela of Westwind 457



PRODUCTION EPDs				MATERNAL EPDs			\$ VALUES			
CED	BW	WW	YW	HP	CEM	Milk	\$W	\$F	\$G	\$B
+6	+2.9	+86	+142	+13.4	+13	+19	+75.75	+112.84	+31.78	+177.61
<b>CARCASS</b>	<b>CW</b>	<b>+71</b>	<b>.42</b>	<b>MARB</b>	<b>+56</b>	<b>.37</b>	<b>REA</b>	<b>+64</b>	<b>.37</b>	<b>FAT</b> +.005 .34

**32**

### Hart Weigh Up 7205

Reg: 18940681 Tattoo: 7205 BD: 02/09/17 Bull  
Act. BW 84 lbs Adj. WW 791 lbs WW Ratio 108

Sitz Upward 307R #  
**Plattermere Weigh Up K360**  
16692552 Barbara of Plattermere 337

F V 20K King 308M #  
**Hart Lady Karama 8173**  
16220544 Hart Lady Karama 4183

Connealy Onward #  
Sitz Henrietta Pride 81M  
G A R Retail Product #  
Barbara of Plattermere 311  
Rafter S Ronan Tex 20K  
Queen 362E  
La Grand Roth Bandolier 2648  
Hart Miss Right Time 0431



PRODUCTION EPDs				MATERNAL EPDs			\$ VALUES			
CED	BW	WW	YW	HP	CEM	Milk	\$W	\$F	\$G	\$B
+6	+1.6	+65	+118	+12.9	+14	+25	+68.63	+79.24	+43.27	+164.77
<b>CARCASS</b>	<b>CW</b>	<b>+58</b>	<b>.41</b>	<b>MARB</b>	<b>+64</b>	<b>.37</b>	<b>REA</b>	<b>+75</b>	<b>.37</b>	<b>FAT</b> -.041 .33



### HART WEIGH UP 7205

LOT 32

- Dam's Production: BR 8@99, NR 8@101, YR 6@98.
- His maternal sister in this herd posts NR 3@102, YR 3@104, IMF 3@105 and RE 3@101. She produced a \$7500 herd sire selected by Melvin Rohrbach, Roscoe, SD.
- He ranks in the breed's top 4% for \$B value.
- Recommended for larger heifers and cows.

**VIEW VIDEOS  
ONLINE AT  
WWW.DVAUCTION.COM**

## Sons of Plattermere Weigh Up K360



**HART WEIGH UP ET 7567 • LOT 33**

**33** Hart Weigh Up Et 7567  
 Reg: +18911364 Tattoo: 7567 BD: 03/01/17 Bull  
 Act. BW 71 lbs Adj. WW 832 lbs WW Ratio 100

Sitz Upward 307R #  
**Plattermere Weigh Up K360**  
 16692552 Barbara of Plattermere 337

Mytty In Focus #  
**Hart Misti 7017 #**  
 15942577 Hart Misti 5054

Connealy Onward #  
 Sitz Henrietta Pride 81M  
 G A R Retail Product #  
 Barbara of Plattermere 311  
 S A F Focus of E R #  
 Mytty Countess 906  
 WAR Alliance 9126 6006 #  
 Westwind Misti D J H 007



PRODUCTION EPDs				MATERNAL EPDs			\$ VALUES					
CED	BW	WW	YW	HP	CEM	Milk	\$W	\$F	\$G	\$B		
+6	+2.4	+82	+142	+14.8	+11	+24	+86.80	+111.24	+41.76	+175.47		
CARCASS	CW	+64	.43	MARB	+60	.40	REA	+1.01	.39	FAT	-.018	.36

- Dam's Production: BR 5@97, NR 5@110, YR 5@106.
- The Pathfinder, donor dam of these flushmates has been an outstanding producer. Her 2011 son, Hart Mountaineer 1176 was the \$27,000 high selling lot 1 bull of the 2012 Hart Sale and is now an Accelerated Genetics standout. Her 2009 son, Hart Battleship 9010 sold to ABS Global and topped the 2010 Sale at \$23,000. Her 2010 son sold to Chris Castello, Tracy, CA at \$4250.
- He posted the #3 highest \$W value in the bull offering while ranking in the top 1% for WW and YW EPDs, \$W value and top 2% for \$B among non-parent bulls.
- Full brother sells as lot 34.
- **Recommended for larger heifers and cows.**



**HART BATTLESHIP 9010**

\$23,000 maternal brother to Lots 33 and 34 at ABS Global

**34** Hart Weigh Up Et 7554  
 Reg: +18911362 Tattoo: 7554 BD: 02/27/17 Bull  
 Act. BW 60 lbs Adj. WW 770 lbs WW Ratio 100

Sitz Upward 307R #  
**Plattermere Weigh Up K360**  
 16692552 Barbara of Plattermere 337

Mytty In Focus #  
**Hart Misti 7017 #**  
 15942577 Hart Misti 5054

Connealy Onward #  
 Sitz Henrietta Pride 81M  
 G A R Retail Product #  
 Barbara of Plattermere 311  
 S A F Focus of E R #  
 Mytty Countess 906  
 WAR Alliance 9126 6006 #  
 Westwind Misti D J H 007



PRODUCTION EPDs				MATERNAL EPDs			\$ VALUES					
CED	BW	WW	YW	HP	CEM	Milk	\$W	\$F	\$G	\$B		
+14	+1.4	+59	+105	+8.8	+15	+28	+72.45	+74.74	+49.12	+160.02		
CARCASS	CW	+44	.42	MARB	+84	.39	REA	+78	.39	FAT	-.013	.35

- Dam's Production: BR 5@97, NR 5@110, YR 5@106.
- In 2014, sons of Hart Misti 7017 by Connealy Cavalry 1149 highlighted the offering as the featured lots 1 and 2 selling to Troy Weig, Mina SD at \$10,500 and Jeff Forsting, Columbia SD at \$10,000.
- This calving ease prospect recorded the #5 highest CED EPD (top 3%) and the #2 lowest BW EPD. He enjoys a \$value rank in the top 4% for \$W and top 5% for \$B among non-parent bulls.
- Full Brother sells as lot 33.
- **Recommended for heifers and cows.**



**HART WEIGH UP 7072 • LOT 35**

**35** Hart Weigh Up 7072  
 Reg: 18940629 Tattoo: 7072 BD: 02/01/17 Bull  
 Act. BW 85 lbs Adj. WW 758 lbs WW Ratio 103

Sitz Upward 307R #  
**Plattermere Weigh Up K360**  
 16692552 Barbara of Plattermere 337

Hart Final Answer 1017  
**Hart Blackcap Lady 4292**  
 17988355 Hart Blackcap Lady 1546

Connealy Onward #  
 Sitz Henrietta Pride 81M  
 G A R Retail Product #  
 Barbara of Plattermere 311  
 S A V Final Answer 0035 #  
 Hart Whitney 9201  
 Lemar Prime Tracker 105T  
 Hart Lady Empire 6535



PRODUCTION EPDs				MATERNAL EPDs			\$ VALUES					
CED	BW	WW	YW	HP	CEM	Milk	\$W	\$F	\$G	\$B		
+10	+0.9	+61	+113	+13.5	+14	+27	+66.17	+82.91	+34.29	+142.57		
CARCASS	CW	+44	.41	MARB	+57	.36	REA	+47	.36	FAT	+0.013	.32

- Dam's Production: NR 1@103.
- Born unassisted out of a first-calf heifer that recorded an individual WWR 110 and YWR 103.
- His grandam posts NR 5@102 and YR 2@108. She produced a \$6000 son in the 2014 sale for Cliff and Adam Wagner, Flagler CO.
- **Recommended for heifers and cows.**

## Sons of Silveiras Conversion 3048



### HART CONVERSION 7337

LOT 36

- Dam's Production: NR 3@108, YR 2@107.
- Both daughters of his Upward sired dam are retained in the herd. The eldest weaned her first calf posting a nursing ratio of 1@110.
- He ranks in the top 2% for both WW and YW EPDs and the top 3% for \$B value among non-parent bulls.

**60% OF THE  
SALE OFFERING  
IS SUITABLE  
FOR HEIFERS**

**36**

### Hart Conversion 7337

Reg: 18940376 Tattoo: 7337 BD: 03/03/17 Bull  
Act. BW 90 lbs Adj. WW 764 lbs WW Ratio 104

Silveiras Conversion 8064  
**Silveiras Conversion 3048**  
17598819 Silveiras Elba 6036

Sitz Upward 307R #  
**Hart Sandra 3069**  
17674173 Hart Sandra 6262

BT Crossover 758N #  
EXG Saras Dream S609 R3  
G A R Yield Grade #  
Silveiras Elba 4312  
Connealy Onward #  
Sitz Henrietta Pride 81M  
M A R Midland Empire 3092 #  
Sandra of Westwind 107



PRODUCTION EPDs				MATERNAL EPDs			\$ VALUES					
CED	BW	WW	YW	HP	CEM	Milk	\$W	\$F	\$G	\$B		
+1	+3.7	+75	+130	+11.2	+3	+26	+69.64	+97.63	+37.12	+168.48		
CARCASS	CW	+61	.40	MARB	+40	.35	REA	+95	.35	FAT	-.056	.31

**37**

### Hart Conversion 7229

Reg: 18940363 Tattoo: 7229 BD: 02/11/17 Bull  
Act. BW 86 lbs Adj. WW 828 lbs WW Ratio 113

Silveiras Conversion 8064  
**Silveiras Conversion 3048**  
17598819 Silveiras Elba 6036

H A R B Icon 019  
**Hart Miss Rosella 5189**  
18312953 Hart Miss Rosella 1351 #

BT Crossover 758N #  
EXG Saras Dream S609 R3  
G A R Yield Grade #  
Silveiras Elba 4312  
S A V Final Answer 0035 #  
H A R B Belle Nellie 702-707  
Lemar Prime Tracker 105T  
Hart Miss New Design 6203



PRODUCTION EPDs				MATERNAL EPDs			\$ VALUES					
CED	BW	WW	YW	HP	CEM	Milk	\$W	\$F	\$G	\$B		
+2	+3.7	+66	+109	+8.9	+8	+22	+56.61	+73.09	+36.10	+150.07		
CARCASS	CW	+48	.38	MARB	+60	.33	REA	+51	.34	FAT	+0.005	.30



### HART CONVERSION 7229

LOT 37

- Dam's Production: NR 1@113.
- Born unassisted from a first-calf heifer that bested her contemporaries with individual performance highlighted by a WWR 112, YWR 110 and RE ratio 118.
- Maternal grandsire, HARB Icon 019 was the \$18,000 third top-selling bull of the 2010 Midland Bull Test and described as a robust, deep ribbed, thick hipped bull with true curve-bending tendencies verified by progeny ratios of WWR 360@102, and YWR 161@103. 109 daughters of Icon have weaned 236 calves with a collective nursing ratio of 102.

## Sons of Silveiras Conversion 3048



**HART CONVERSION 7169 • LOT 38**



**HART MEL 4021**

\$4750 maternal brother to Lot 38  
selected by Craig Malsom, SD

- Dam's Production: NR 4@106, YR 3@104.
- Pathfinder dam.
- His maternal brother by Musgrave Mel was the \$4750 herd sire selection of Craig Malsom, Hosmer SD in the 2015 sale. Two maternal sisters have been retained in the herd.

**38** **Hart Conversion 7169**  
 Reg: 18940358    Tattoo: 7169    BD: 02/08/17    Bull  
 Act. BW 88 lbs    Adj. WW 722 lbs    WW Ratio 98

Silveiras Conversion 8064  
**Silveiras Conversion 3048**  
**17598819** Silveiras Elba 6036

BT Pioneer 1020  
**Hart Blackcap Maid 2201 #**  
**17402838** Hart Miss VRD 6319 #

BT Crossover 758N #  
 EXG Saras Dream S609 R3  
 G A R Yield Grade #  
 Silveiras Elba 4312  
 S A V Pioneer 7301 #  
 Baldrige Ebonette P189 #  
 Stepladder VRD 3182  
 Hart Miss Scotchcap 3400



PRODUCTION EPDs				MATERNAL EPDs			\$ VALUES			
CEW	BW	WW	YW	HP	CEM	Milk	\$W	\$F	\$G	\$B
+8	+2.4	+62	+119	+10.0	+11	+25	+53.48	+78.05	+37.36	+152.84
CARCASS		CW	+57 .39	MARB	+88 .34	REA	+44 .34	FAT	+035 .30	

**39** **Hart Conversion 7223**  
 Reg: 18940361    Tattoo: 7223    BD: 02/11/17    Bull  
 Act. BW 90 lbs    Adj. WW 806 lbs    WW Ratio 110

Silveiras Conversion 8064  
**Silveiras Conversion 3048**  
**17598819** Silveiras Elba 6036

Sitz Upward 307R #  
**Hart Queen Perfecta 0118**  
**16815669** Hart Miss Right Time 3624

BT Crossover 758N #  
 EXG Saras Dream S609 R3  
 G A R Yield Grade #  
 Silveiras Elba 4312  
 Connealy Onward #  
 Sitz Henrietta Pride 81M  
 Pine Creek Right Time 1147 #  
 Hart Queen Ext 7008



PRODUCTION EPDs				MATERNAL EPDs			\$ VALUES			
CEW	BW	WW	YW	HP	CEM	Milk	\$W	\$F	\$G	\$B
+0	+3.3	+62	+111	+9.8	+6	+23	+51.04	+76.51	+27.82	+157.86
CARCASS		CW	+60 .40	MARB	+32 .35	REA	+83 .35	FAT	-006 .32	



**HART CONVERSION 7223**  
 LOT 39

- Dam's Production: NR 5@117, YR 3@111.
- A maternal brother to the \$15,000 selection of Dikoff Ranch and Jallo Angus from the 2014 Hart Farms Sale as well as the \$7000 choice of Clint Mundell, Walsh, CO in '17 and a \$7000 herdsire choice of Chris McDonald of Leonard, ND in '13 sale.
- Maternal brothers sell as lots 14,15, and 24.

**VIEW VIDEOS  
 ONLINE AT  
 WWW.DVAUCTION.COM**

*Hart-felt Thanks to Everyone Who Has Made our Past Sales a Success!*





*Hart-felt Thanks to Everyone Who Has Made our Past Sales a Success!*



## Sons of "Open Range" and "Index"



**HART OPEN RANGE 7085 • LOT 40**



**HART INDEX ET 7502 • LOT 42**

**40** Reg: 18940350    Tattoo: 7085    BD: 02/02/17    Bull  
Act. BW 86 lbs    Adj. WW 844 lbs    WW Ratio 115

Sitz Identity 7828  
**Hilltop Open Range 2279**  
17427037 HT Hazel GP 97

Connealy Final Product #  
**Hart Liberty Belle 2002**  
17407347 Hart Liberty Belle 0174

Sitz Identity 2575 #  
Sitz Beebe Queen 1956 #  
Sitz Alliance 7544 #  
Hilltop Hazel GP 7120  
Connealy Product 568  
Ebonista of Conanga 471 #  
C C A Counter 778  
Hart Lady Texan 7010

PRODUCTION EPDs				MATERNAL EPDs			\$ VALUES			
CED	BW	WW	YW	HP	CEM	Milk	\$W	\$F	\$G	\$B
+4	+0.2	+61	+112	+8.1	+8	+25	+60.17	+67.43	+35.70	+129.95
CARCASS		CW	+44 .37	MARB	+64 .32	REA	+44 .33	FAT	+018 .29	

- Dam's Production: NR 3@108.
- He is a reasonable birth weight bull with astounding pre-weaning performance.
- Maternal brother sold to Keith Nelson, Webster, SD in 2016.

**41** Reg: 18940369    Tattoo: 7289    BD: 02/25/17    Bull  
Act. BW 87 lbs    Adj. WW 749 lbs    WW Ratio 102

Sitz Identity 7828  
**Hilltop Open Range 2279**  
17427037 HT Hazel GP 97

H A R B Icon 019  
**Hart Misti 2100**  
17402822 Hart Misti 7017 #

Sitz Identity 2575 #  
Sitz Beebe Queen 1956 #  
Sitz Alliance 7544 #  
Hilltop Hazel GP 7120  
S A V Final Answer 0035 #  
H A R B Belle Nellie 702-707  
Mytty In Focus #  
Hart Misti 5054

PRODUCTION EPDs				MATERNAL EPDs			\$ VALUES			
CED	BW	WW	YW	HP	CEM	Milk	\$W	\$F	\$G	\$B
+5	+2.3	+65	+124	+9.7	+12	+30	+65.89	+95.85	+33.62	+151.86
CARCASS		CW	+51 .37	MARB	+50 .33	REA	+70 .33	FAT	+012 .29	

- Dam's Production: NR 4@103, YR 2@102.
- His maternal brother was selected by Darin Zuehlke, Britton SD from the 2017 offering at \$6000.
- His Pathfinder grandam is an accomplished Hart Farms donor dam that produced the \$23,000 ABS sire, Hart Battleship; the \$27,000 Accelerated Genetics, Kelly Albrecht and Jeff Penz sire, Hart Mountaineer; ET sons in the 2014 sale that sold to Troy Weig and Jeff Forsting at \$10,500 and \$10,000; and an \$8000 son to Chris Langner in Iowa. In the 2016 offering, her sons were herd sire selections of Reuer Farm, Hoven SD and Ed Kaehler, Eyota MN.

**42** Reg: +18946104    Tattoo: 7502    BD: 01/29/17    Bull  
Act. BW 78 lbs    Adj. WW 781 lbs    WW Ratio 100

G A R Ingenuity  
**V A R Index 3282**  
17513381 Sandpoint Blackbird 8809

PA Power Tool 9108 #  
**EF Lucy 3054**  
17625525 Riverbend Young Lucy W1470

G A R New Design 5050 #  
G A R Objective 1067  
Connealy Onward #  
Riverbend Blackbird 4301  
G A R Predestined #  
Shamrocks Beebe Queen 3095  
B/R Ambush 28 #  
Riverbend Young Lucy T1080

PRODUCTION EPDs				MATERNAL EPDs			\$ VALUES			
CED	BW	WW	YW	HP	CEM	Milk	\$W	\$F	\$G	\$B
+12	+0.9	+58	+115	+10.1	+10	+32	+65.95	+81.24	+52.52	+152.61
CARCASS		CW	+43 .39	MARB	+1.07 .36	REA	+79 .36	FAT	+010 .32	

- Dam's Production: BR 2@87, NR 2@104.
- His donor dam is a maternal sister to the highly acclaimed Genex calving ease sire, EF Commando 1366. Angus aficionados will know that "Commando" was used enthusiastically in the Baldrige program where he sired the \$157,000 breed sensation, Baldrige Bronc to Mile High Angus/Select Sires, the \$150,000 Baldrige Commando CO36 to ABS Global and the \$100,000 Baldrige 38 Special, selected by Hoover Angus and Alta Genetics.
- Maternal brothers sell as lots 9,10, and 74.
- Recommended for heifers and cows.

**EF COMMANDO 1366**  
Maternal brother to the dam of lot 42



**HART CONVERSION 6229**  
\$6,000 maternal brother to Lot 41 selected by Darin Zuehlke, SD

## Sons of VAR Index 3282



Hart

### HART INDEX ET 7508 • LOT 43

**43**

#### Hart Index Et 7508

Reg: +18946063 Tattoo: 7508 BD: 02/14/17 Bull  
Act. BW 78 lbs Adj. WW 755 lbs WW Ratio 100

G A R Ingenuity  
**V A R Index 3282**  
17513381 Sandpoint Blackbird 8809

Hilltop Open Range 2279  
**Hart Sandra 4024**  
17988250 Hart Sandra 2123

G A R New Design 5050 #  
G A R Objective 1067  
Connealy Onward #  
Riverbend Blackbird 4301  
Sitz Identity 7828  
HT Hazel GP 97  
Sitz Upward 307R #  
Hart Sandra 5901



PRODUCTION EPDs				MATERNAL EPDs			\$ VALUES			
CED	BW	WW	YW	HP	CEM	Milk	\$W	\$F	\$G	\$B
+12	-.04	+63	+109	+12.6	+12	+33	+79.84	+58.88	+37.24	+137.16
CARCASS		CW	+49 .39	MARB	+63 .36	REA	+67 .36	FAT	+021 .32	

- His donor dam, Hart Sandra 4024 earned her way to the donor pen at Hart Angus farm with individual performance of WWR 114, YWR 117 and RE ratio 121. Five sons will be offered in the 2018 sale offering.
- Flush brothers sell as lots 44 and 45. Maternal brothers sell as lots 7 and 8. Recommended for heifers and cows.

**44**

#### Hart Index Et 7505

Reg: +18946061 Tattoo: 7505 BD: 02/18/17 Bull  
Act. BW 92 lbs Adj. WW 762 lbs WW Ratio 100

G A R Ingenuity  
**V A R Index 3282**  
17513381 Sandpoint Blackbird 8809

Hilltop Open Range 2279  
**Hart Sandra 4024**  
17988250 Hart Sandra 2123

G A R New Design 5050 #  
G A R Objective 1067  
Connealy Onward #  
Riverbend Blackbird 4301  
Sitz Identity 7828  
HT Hazel GP 97  
Sitz Upward 307R #  
Hart Sandra 5901



PRODUCTION EPDs				MATERNAL EPDs			\$ VALUES			
CED	BW	WW	YW	HP	CEM	Milk	\$W	\$F	\$G	\$B
+2	+4.6	+78	+136	+11.0	+12	+31	+76.98	+97.11	+35.96	+150.90
CARCASS		CW	+55 .39	MARB	+40 .35	REA	+1.00 .35	FAT	-.025 .31	

- Dam's Production: NR 1@94.
- Maternal grandsire, Hilltop Open Range 2279 has proven himself as a sire of astonishing growth and maternal value. He boasts progeny ratios of BR 332@100, WR 325@102, and YR 119@105 while 16 daughters have a collective nursing ratio of 16@101.
- He ranks in the top 1% for both WW and YW EPDs; and in the top 2% for \$W value among non-parent bulls.
- Flush brothers sell as lots 43 and 45. Maternal brothers sell as lots 7 and 8.

**45**

#### Hart Index Et 7510

Reg: +18946066 Tattoo: 7510 BD: 02/17/17 Bull  
Act. BW 90 lbs Adj. WW 815 lbs WW Ratio 100

G A R Ingenuity  
**V A R Index 3282**  
17513381 Sandpoint Blackbird 8809

Hilltop Open Range 2279  
**Hart Sandra 4024**  
17988250 Hart Sandra 2123

G A R New Design 5050 #  
G A R Objective 1067  
Connealy Onward #  
Riverbend Blackbird 4301  
Sitz Identity 7828  
HT Hazel GP 97  
Sitz Upward 307R #  
Hart Sandra 5901



PRODUCTION EPDs				MATERNAL EPDs			\$ VALUES			
CED	BW	WW	YW	HP	CEM	Milk	\$W	\$F	\$G	\$B
+10	+2.1	+75	+132	+11.0	+10	+28	+79.88	+96.01	+32.24	+154.72
CARCASS		CW	+58 .38	MARB	+41 .34	REA	+87 .34	FAT	-.001 .30	

- Dam's Production: NR 1@94.
- His sire, VAR Index 3282 was the \$100,000 ½ interest top-selling bull of the 2014 Vintage Angus sale. He is an astounding carcass trait sire with MB and RE EPDs in the top 20% and 2%, with a sub-zero Fat. Very few bulls in the current sire summary can match his combination of CED, BW, Marb, RE, \$W and \$B.
- He ranks in the top 2% for both WW and YW EPDs; and in the top 1% for \$W value.
- Flush brothers sell as lots 43 and 44. Maternal brothers sell as lots 7 and 8.

**46**

#### Hart Index 7097

Reg: 18946047 Tattoo: 7097 BD: 02/03/17 Bull  
Act. BW 79 lbs Adj. WW 762 lbs WW Ratio 104

G A R Ingenuity  
**V A R Index 3282**  
17513381 Sandpoint Blackbird 8809

Hilltop Open Range 2279  
**Hart Zara 4162**  
17988294 Hart Zara 2344

G A R New Design 5050 #  
G A R Objective 1067  
Connealy Onward #  
Riverbend Blackbird 4301  
Sitz Identity 7828  
HT Hazel GP 97  
SydGen Contract 9410 #  
Hart Zara 7052 #



PRODUCTION EPDs				MATERNAL EPDs			\$ VALUES			
CED	BW	WW	YW	HP	CEM	Milk	\$W	\$F	\$G	\$B
+11	+0.1	+57	+102	+12.5	+11	+30	+64.89	+62.57	+46.85	+125.76
CARCASS		CW	+32 .41	MARB	+71 .36	REA	+91 .36	FAT	+010 .32	

- Dam's Production: NR 2@109, YR 1@115.
- His maternal sister by "Rampage" posted individual performance of WWR 113, YWR 115, RE ratio 130 and was systematically returned to the breeding program.
- Recommended for heifers and cows.

## Sons of E&B Blackjack 321



### HART BLACKJACK 7096

LOT 47

- Dam's Production: BR 3@97, NR 3@100.
- His maternal sister now serves the Evan Merkel program at Ellendale, ND. She posted astonishing ultrasound measures highlighted by an IMF 7.49% to ratio 174 with 116 contemporaries.
- Maternal grandsire, EXAR Upshot 0562B has transitioned from a crowd favorite at the 2011 National Western to an outstanding performance sire with carcass merit in the ABS roster.

### 47 Hart Blackjack 7096

Reg: 18940353 Tattoo: 7096 BD: 02/03/2017 Bull  
Act. BW 79 lbs Adj. WW 761 lbs WW Ratio 104

Connealy Consensus 7229 # \*  
E&B Blackjack 321 +\*  
17616298 E&B Lady New Frontier 654 #+

EXAR Upshot 0562B \*  
NSF Twitter A19  
17678970 NSF Twitter X19

Connealy Consensus # \*  
Blue Lilly of Conanga 16  
B/R New Frontier 095 #+  
E&B Lady Precision 15 +  
Sitz Upward 307R #  
EXAR Barbara T020 #+  
OSU Currency 8173 +  
NSF Lady 004 T121



PRODUCTION EPDs				MATERNAL EPDs			\$ VALUES				
CED	BW	WW	YW	HP	CEM	Milk	\$W	\$F	\$G	\$B	
+6	+1.3	+56	+96	+11.0	+8	+36	+69.61	+52.99	+31.46	+119.17	
CARCASS	CW	MARB	REA	FAT							
	+37 .40	+52 .35	+44 .35	+030 .32							

### 48 Hart Blackjack 7239

Reg: 18940365 Tattoo: 7239 BD: 02/12/17 Bull  
Act. BW 89 lbs Adj. WW 792 lbs WW Ratio 108

Connealy Consensus 7229 #  
E&B Blackjack 321  
17616298 E&B Lady New Frontier 654

Hart Precision 5913 #  
Queen of Harts 8514  
16216037 Hart Lady Empire 5107

Connealy Consensus #  
Blue Lilly of Conanga 16  
B/R New Frontier 095 #  
E&B Lady Precision 15  
C&M Sterling Precision  
Hart Pamela 2824  
M A R Midland Empire 3092 #  
Hart Miss Sitz Traveler 1156



PRODUCTION EPDs				MATERNAL EPDs			\$ VALUES				
CED	BW	WW	YW	HP	CEM	Milk	\$W	\$F	\$G	\$B	
+3	+3.2	+64	+124	+10.1	+8	+36	+62.47	+97.87	+37.11	+162.86	
CARCASS	CW	MARB	REA	FAT							
	+55 .39	+52 .34	+62 .35	-.031 .31							



### HART BLACKJACK 7239

LOT 48

- Dam's Production: BR 7@97, NR 7@103, YR 3@100.
- His full sister by "Blackjack" weaned her first bull calf posting a BR 1@92 and NR 1@104. Her "1682" son posted the #1 highest CED, #1 lowest BW EPD and sells in this offering as lot 23.
- He ranks in the top 5% for \$B value among non-parent bulls in the breed.

**VIEW VIDEOS  
ONLINE AT  
WWW.DVAUCTION.COM**

## Sons of E&B Blackjack 321



### HART BLACKJACK 7138 • LOT 49

#### 49 Hart Blackjack 7138

Reg: 18940356    Tattoo: 7138    BD: 02/06/17    Bull  
Act. BW 90 lbs    Adj. WW 717 lbs    WW Ratio 98

Connealy Consensus 7229 #  
**E&B Blackjack 321**  
17616298    E&B Lady New Frontier 654

WAR Rito S109 112 9009  
**Hart Miss Rito S109 8006**  
16215978    Hart Miss LTD 0018 6595

Connealy Consensus #  
Blue Lilly of Conanga 16  
B/R New Frontier 095 #  
E&B Lady Precision 15  
Rito 112 of 2536 Rito 616 #  
WAR Advantage 9009 7121 #  
S A F Ltd 0018  
Hart Miss Right Time 2486



PRODUCTION EPDs				MATERNAL EPDs			\$ VALUES						
CED	BW	WW	YW	HP	CEM	Milk	\$W	\$F	\$G	\$B			
+2	+2.6	+59	+110	+7.6	+7	+16	+41.99	+71.29	+43.73	+163.14			
CARCASS		CW	+56	.39	MARB	+69	.35	REA	+86	.35	FAT	-.011	.31

- Dam's Production: NR 6@106, YR 5@105.
- Sons of the Hart Farms donor dam, Hart Miss Rito S109 8006 include herd sire selections made by John Berdo, Washington, IA and Terry Reuer, Hoven SD in the 2017 and 2016 sales, an \$8000 bull in the 2015 sale selected by McCormick Ranch, Bismarck SD, a \$7000 son chosen by Reuer Farms Inc, Hoven SD also in 2015, one that sold to Ron Demers of Colome, SD for \$11,000 in the '12 sale as well as one for Wayne and Marlon Steinwand of Edgeley, ND at \$3000 in '13 sale.
- Maternal brother sells as lot 12.

#### 50 Hart Blackjack 7300

Reg: 18940370    Tattoo: 7300    BD: 02/26/17    Bull  
Act. BW 88 lbs    Adj. WW 774 lbs    WW Ratio 105

Connealy Consensus 7229 #  
**E&B Blackjack 321**  
17616298    E&B Lady New Frontier 654

CAR Efficient 534 #  
**Hart Blackcap Lady 2091**  
17402820    Hart Blackcap Lady 8284 #

Connealy Consensus #  
Blue Lilly of Conanga 16  
B/R New Frontier 095 #  
E&B Lady Precision 15  
K C F Bennett Efficient  
CAR Miss Susie 308 #  
S A V John Wayne 6220  
Hart Blackcap Lady 4686



PRODUCTION EPDs				MATERNAL EPDs			\$ VALUES						
CED	BW	WW	YW	HP	CEM	Milk	\$W	\$F	\$G	\$B			
+5	+1.6	+47	+92	+11.7	+6	+26	+47.82	+54.62	+43.94	+125.93			
CARCASS		CW	+33	.40	MARB	+79	.35	REA	+44	.35	FAT	+0.04	.31

- Dam's Production: NR 4@104, YR 3@104.
- All three of his maternal sisters have been returned to the breeding program.
- His dam is sired by the now-deceased CAR Efficient 534, renowned for being very structurally correct, muscular and athletic. He is also an excellent maternal sire with calves that exhibit eye catching phenotype.

#### 51 Hart Blackjack 7120

Reg: 18940355    Tattoo: 7120    BD: 02/04/17    Bull  
Act. BW 86 lbs    Adj. WW 733 lbs    WW Ratio 100

Connealy Consensus 7229 #  
**E&B Blackjack 321**  
17616298    E&B Lady New Frontier 654

S A V Iron Mountain 8066 #  
**Hart Angela 2152**  
17403476    Hart Angela 4820

Connealy Consensus #  
Blue Lilly of Conanga 16  
B/R New Frontier 095 #  
E&B Lady Precision 15  
TC Gridiron 258 #  
S A V Madame Pride 3249  
S A F Ltd 0018  
Hart Angela 2828



PRODUCTION EPDs				MATERNAL EPDs			\$ VALUES						
CED	BW	WW	YW	HP	CEM	Milk	\$W	\$F	\$G	\$B			
+4	+1.8	+50	+98	+12.0	+9	+23	+45.51	+56.60	+16.81	+105.56			
CARCASS		CW	+39	.40	MARB	+04	.35	REA	+83	.35	FAT	-.006	.31

- Dam's Production: NR 4@102, YR 3@104.
- He has two maternal sisters in the Hart Angus herd and a maternal brother serving in the John Redmund herd at Wilmot SD.
- His maternal grandsire, SAV Iron Mountain is an Accelerated Genetics feature and was the \$75,000 highlight of the 2009 SAV Sale to Peak Dot Ranch where his progeny have shattered Canadian sales records.



#### HART WEIGH UP 6088

\$5,000 Maternal brother to Lot 51  
selected by John Redmund, SD

## Flushmate sons of RB Tour of Duty 177



**HART TOUR OF DUTY ET 7576 • LOT 52**

**52**

### Hart Tour of Duty Et 7576

Reg: +18913760 Tattoo: 7576 BD: 03/02/17 Bull  
Act. BW 71 lbs Adj. WW 845 lbs WW Ratio 100

Werner War Party 2417 #  
**R B Tour Of Duty 177**  
16984170 B A Lady 6807 305

Mytty In Focus #  
**Hart Misti 7017 #**  
15942577 Hart Misti 5054

Connealy Onward #  
BAAR USA Lady Jaye 489  
Vermilion Dateline 7078 #  
G D Lady Hi Flyer 302  
S A F Focus of E R #  
Mytty Countess 906  
WAR Alliance 9126 6006 #  
Westwind Misti D J H 007

PRODUCTION EPDs				MATERNAL EPDs			\$ VALUES					
CED	BW	WW	YW	HP	CEM	Milk	\$W	\$F	\$G	\$B		
+8	+1.9	+74	+125	+14.6	+13	+30	+81.54	+88.08	+33.78	+154.41		
<b>CARCASS</b>	<b>CW</b>	<b>+45</b>	<b>.42</b>	<b>MARB</b>	<b>+38</b>	<b>.39</b>	<b>REA</b>	<b>+88</b>	<b>.39</b>	<b>FAT</b>	<b>-.024</b>	<b>.36</b>

- Dam's Production: BR 5@97, NR 5@110, YR 5@106.
- Flush brothers sell as lots 52,53,54,and 55.
- The Pathfinder, donor dam of these flushmates has been an outstanding producer. Her 2011 son, Hart Mountaineer 1176 was the \$27,000 high selling lot 1 bull of the 2012 Hart Sale and is now an Accelerated Genetics standout. Her 2009 son, Hart Battleship 9010 sold to ABS Global and topped the 2010 Sale at \$23,000. Her 2010 son sold to Chris Castello, Tracy, CA at \$4250.
- He ranks in the top 2% for WW EPD, top 4% for YW EPD and top 1% for \$W.
- Recommended for heifers and cows.

**53**

### Hart Tour of Duty Et 7547

Reg: +18910931 Tattoo: 7547 BD: 02/26/17 Bull  
Act. BW 71 lbs Adj. WW 757 lbs WW Ratio 100

Werner War Party 2417 #  
**R B Tour Of Duty 177**  
16984170 B A Lady 6807 305

Mytty In Focus #  
**Hart Misti 7017 #**  
15942577 Hart Misti 5054

Connealy Onward #  
BAAR USA Lady Jaye 489  
Vermilion Dateline 7078 #  
G D Lady Hi Flyer 302  
S A F Focus of E R #  
Mytty Countess 906  
WAR Alliance 9126 6006 #  
Westwind Misti D J H 007

PRODUCTION EPDs				MATERNAL EPDs			\$ VALUES					
CED	BW	WW	YW	HP	CEM	Milk	\$W	\$F	\$G	\$B		
+9	+1.8	+65	+106	+15.0	+13	+29	+68.83	+57.42	+30.84	+128.27		
<b>CARCASS</b>	<b>CW</b>	<b>+45</b>	<b>.42</b>	<b>MARB</b>	<b>+32</b>	<b>.39</b>	<b>REA</b>	<b>+77</b>	<b>.38</b>	<b>FAT</b>	<b>-.017</b>	<b>.35</b>

- Dam's Production: BR 5@97, NR 5@110, YR 5@106.
- In 2014, sons of Hart Misti 7017 by Connealy Cavalry 1149 highlighted the offering as the featured lots 1 and 2 selling to Troy Weig, Mina SD at \$10,500 and Jeff Forsting, Columbia SD at \$10,000.
- Recommended for heifers and cows.



**HART CAVALRY ET 3412**

\$10,000 maternal brother to Lots 52 thru 55

**54**

### Hart Tour of Duty Et 7578

Reg: +18913761 Tattoo: 7578 BD: 03/03/17 Bull  
Act. BW 60 lbs Adj. WW 780 lbs WW Ratio 100

Werner War Party 2417 #  
**R B Tour Of Duty 177**  
16984170 B A Lady 6807 305

Mytty In Focus #  
**Hart Misti 7017 #**  
15942577 Hart Misti 5054

Connealy Onward #  
BAAR USA Lady Jaye 489  
Vermilion Dateline 7078 #  
G D Lady Hi Flyer 302  
S A F Focus of E R #  
Mytty Countess 906  
WAR Alliance 9126 6006 #  
Westwind Misti D J H 007



PRODUCTION EPDs				MATERNAL EPDs			\$ VALUES					
CED	BW	WW	YW	HP	CEM	Milk	\$W	\$F	\$G	\$B		
+8	+1.0	+74	+130	+13.4	+8	+31	+82.10	+94.99	+43.48	+152.22		
<b>CARCASS</b>	<b>CW</b>	<b>+48</b>	<b>.42</b>	<b>MARB</b>	<b>+78</b>	<b>.39</b>	<b>REA</b>	<b>+59</b>	<b>.38</b>	<b>FAT</b>	<b>-.003</b>	<b>.35</b>

- Dam's Production: BR 5@97, NR 5@110, YR 5@106.
- Dam has earned Pathfinder status with natural progeny ratios of BR 5@97, NR 5@110 and YR 5@106. Her 42 ultrasound progeny record an average IMF ratio 108, RE ratio 101, Fat ratio 99 and Rump fat ratio 99.
- He ranks in the top 2% for both WW and YW EPDs as well as the top 1% for \$W value among non-parent bulls.
- Recommended for heifers and cows.



**HART MISTI 7017**

Donor dam of lots 52 thru 55



**HART TOUR OF DUTY ET 7564 • LOT 55**

**55**

### Hart Tour of Duty Et 7564

Reg: +18913758 Tattoo: 7564 BD: 02/28/17 Bull  
Act. BW 71 lbs Adj. WW 789 lbs WW Ratio 100

Werner War Party 2417 #  
**R B Tour Of Duty 177**  
16984170 B A Lady 6807 305

Mytty In Focus #  
**Hart Misti 7017 #**  
15942577 Hart Misti 5054

Connealy Onward #  
BAAR USA Lady Jaye 489  
Vermilion Dateline 7078 #  
G D Lady Hi Flyer 302  
S A F Focus of E R #  
Mytty Countess 906  
WAR Alliance 9126 6006 #  
Westwind Misti D J H 007



PRODUCTION EPDs				MATERNAL EPDs			\$ VALUES					
CED	BW	WW	YW	HP	CEM	Milk	\$W	\$F	\$G	\$B		
+10	+2.9	+67	+113	+13.1	+17	+33	+78.61	+69.83	+40.59	+147.52		
<b>CARCASS</b>	<b>CW</b>	<b>+49</b>	<b>.41</b>	<b>MARB</b>	<b>+51</b>	<b>.38</b>	<b>REA</b>	<b>+85</b>	<b>.37</b>	<b>FAT</b>	<b>-.033</b>	<b>.34</b>

- Dam's Production: BR 5@97, NR 5@110, YR 5@106.
- RB Tour of Duty 177 is the record-selling bull of the Minnesota Bull Test selected by Crouch Angus Valley who became a top-selling bull at ABS and ORlgen. He stands among the top sires in the breed for BW to YW spread and may become the dominant descendant of the famed "Lady" cow family that has produced test station winners from Wisconsin to Montana and record selling females.
- Recommended for heifers and cows.

## Sons of "Outright" and "Renown"



### HART OUTRIGHT 7033 • LOT 56

**56** Hart Outright 7033  
 Reg: 18942501    Tattoo: 7033    BD: 01/27/17    Bull  
 Act. BW 79 lbs    Adj. WW 829 lbs    WW Ratio 113

K C F Bennett Absolute  
**HAYNES Outright 452**  
 17925323 HAYNES ND 454 Miss 179

E&B Blackjack 321  
**Hart Liberty Belle 5315**  
 18313017 Hart Liberty Belle 2625

S A V Final Answer 0035 #  
 Thomas Miss Lucy 5152  
 B/R New Day 454 #  
 HAYNES Miss Infocus 984  
 Connealy Consensus 7229 #  
 E&B Lady New Frontier 654 #  
 JAR Cowboy Up 6162 068  
 Hart Liberty Belle 9373



PRODUCTION EPDs				MATERNAL EPDs			\$ VALUES				
CEW	BW	WW	YW	HP	CEM	Milk	\$W	\$F	\$G	\$B	
+7	+0.8	+78	+148	+7.9	+8	+23	+73.60	+123.89	+20.99	+163.10	
<b>CARCASS</b>	<b>CW</b>	+71	.41	<b>MARB</b>	+50	.37	<b>REA</b>	+55	.37	<b>FAT</b>	+054 .33

- Dam's Production: NR 1@113.
- Born unassisted out of a first-calf heifer.
- Grandam posts NR 4@102, YR 2@107, IMF 2@106 and RE 2@114.
- He recorded the #4 highest YW EPD in the bull offering ranking in the top 1% for that trait as well as WW EPD.
- Recommended for heifers and cows.

**57** Hart Outright 7070  
 Reg: 18942511    Tattoo: 7070    BD: 01/31/17    Bull  
 Act. BW 63 lbs    Adj. WW 804 lbs    WW Ratio 109

K C F Bennett Absolute  
**HAYNES Outright 452**  
 17925323 HAYNES ND 454 Miss 179

E&B Blackjack 321  
**Hart Angela 5219**  
 18312968 Hart Angela 2152

S A V Final Answer 0035 #  
 Thomas Miss Lucy 5152  
 B/R New Day 454 #  
 HAYNES Miss Infocus 984  
 Connealy Consensus 7229 #  
 E&B Lady New Frontier 654 #  
 S A V Iron Mountain 8066 #  
 Hart Angela 4820



PRODUCTION EPDs				MATERNAL EPDs			\$ VALUES				
CEW	BW	WW	YW	HP	CEM	Milk	\$W	\$F	\$G	\$B	
+7	+0.6	+59	+113	+12.2	+11	+21	+52.47	+85.01	+34.75	+155.60	
<b>CARCASS</b>	<b>CW</b>	+51	.41	<b>MARB</b>	+70	.37	<b>REA</b>	+45	.37	<b>FAT</b>	+029 .33

- Dam's Production: BR 1@86, NR 1@109.
- A light birth weight calving ease prospect born unassisted out of a first-calf heifer.
- Grandam posts NR 4@102, YR 3@104, IMF 3@105. She is also the dam of the lot 51 in this offering.
- HAYES Outright 452, is an ABS featured sire that gained national recognition as the featured top-selling bull of the 2015 Haynes Cattle sale where he recorded a BW 70 lbs, WW ratio 108, YW ratio 123, IMF ratio 115 and RE ratio 107.
- Recommended for heifers and cows.

**58** Hart Renown 7124  
 Reg: 18940951    Tattoo: 7124    BD: 02/05/17    Bull  
 Act. BW 83 lbs    Adj. WW 743 lbs    WW Ratio 101

Rito 707 of Ideal 3407 7075  
**S A V Renown 3439**  
 17633839 S A V Blackcap May 4136

M A R Midland Empire 3092 #  
**Hart Liberty Belle 8336 #**  
 16216010 Hart Miss Backstop 2465 #

R R Rito 707 #  
 Ideal 3407 of 1418 076  
 S A V 8180 Traveler 004 #  
 S A V May 2397 #  
 BR Midland #  
 M A R Lass 4T 9141  
 Buffalos Backstop BN28  
 Hart Miss Rocky Ext 0356



PRODUCTION EPDs				MATERNAL EPDs			\$ VALUES				
CEW	BW	WW	YW	HP	CEM	Milk	\$W	\$F	\$G	\$B	
+7	+1.5	+65	+121	+8.9	+10	+25	+58.55	+76.05	+21.26	+125.84	
<b>CARCASS</b>	<b>CW</b>	+52	.38	<b>MARB</b>	+31	.34	<b>REA</b>	+52	.34	<b>FAT</b>	+024 .30

- Dam's Production: NR 8@101, YR 3@107.
- His productive dam produced a \$9500 herd sire for Todd Timm, Kensal, ND in the 2014 auction, a \$10,000 acquisition by Terry Reuer, Hoven SD in 2013 and Greg Peterson's selection from the 2011 sale for his Conde, SD pastures at \$4750.
- He ranks in the top 5% for YW EPD among non-parent bulls.
- Recommended for heifers and cows.



### SAV RENOWN 3439

Sire of lots 58 and 59

### HART CAVALRY 3161

\$9,500 maternal brother to Lot 58  
 selected by Todd Timm, ND



**59** Hart Renown 7177  
 Reg: 18940937    Tattoo: 7177    BD: 02/08/17    Bull  
 Act. BW 87 lbs    Adj. WW 819 lbs    WW Ratio 111

Rito 707 of Ideal 3407 7075  
**S A V Renown 3439**  
 17633839 S A V Blackcap May 4136

Hart Precision 5913 #  
**Hart Queen Perfecta 9298**  
 16546039 Hart Miss Equator 6505 #

R R Rito 707 #  
 Ideal 3407 of 1418 076  
 S A V 8180 Traveler 004 #  
 S A V May 2397 #  
 C&M Sterling Precision  
 Hart Pamela 2824  
 La Grand Roth Equator 2676  
 Hart Miss Right Time 0450



PRODUCTION EPDs				MATERNAL EPDs			\$ VALUES				
CEW	BW	WW	YW	HP	CEM	Milk	\$W	\$F	\$G	\$B	
+5	+2.4	+68	+124	+12.3	+6	+31	+68.86	+88.50	+20.01	+147.02	
<b>CARCASS</b>	<b>CW</b>	+61	.39	<b>MARB</b>	+31	.34	<b>REA</b>	+67	.35	<b>FAT</b>	+035 .30

- Dam's Production: NR 7@105, YR 6@101.
- Carmen Essig, Lehr, ND selected his maternal brother in 2013.
- Maternal sisters in this herd post a collective nursing ratio of 107 on 4 calves.
- His sire, SAV Renown 3439 was the \$175,000 lead-off bull of the 2014 Schaff Angus Valley Sale and is recognized as a full brother to the equally sought SAV Resource 1441. Each of these is backed by the top-income producing cow in SAV history, SAV Blackcap May 4136 that has produced \$3.8 million in progeny sales.

## Sons of KCF Bennett Fortress



**60% of the Sale Offering Is Suitable for Heifers**

### HART FORTRESS 7035 • LOT 60

**60** Hart Fortress 7035  
 Reg: 18940736 Tattoo: 7035 BD: 01/27/17 Bull  
 Act. BW 81 lbs Adj. WW 752 lbs WW Ratio 102

Connealy Consensus #  
**K C F Bennett Fortress**  
 17259012 Thomas Patricia 9705  
 Hart Upward 1225  
**Hart Sandra 5176**  
 18312945 Hart Sandra 0204

KMK Alliance 6595 187 #  
 Blinda of Conanga 004  
 S S Objective T510 0T26 #  
 Thomas Patricia 71138  
 Sitz Upward 307R #  
 Hart Zara Queen 7122 #  
 HFG North Star 822  
 Hart Sandra 7014 #



PRODUCTION EPDs				MATERNAL EPDs			\$ VALUES					
CED	BW	WW	YW	HP	CEM	Milk	\$W	\$F	\$G	\$B		
+10	+1.9	+70	+124	+10.1	+13	+26	+71.37	+78.72	+44.09	+122.18		
CARCASS	CW	+36	.40	MARB	+73	.35	REA	+60	.35	FAT	+0.00	.31

- Dam's Production: NR 1@102.
- Born unassisted out of a first-calf heifer that recorded individual performance highlighted by a BWR 92, YWR 102, IMF ratio 117 and RE ratio 100.
- He ranks in the top 5% for both WW and YW EPDs and in the top 4% for \$W value among non-parent bulls.
- Recommended for heifers and cows.

**61** Hart Fortress 7058  
 Reg: 18940734 Tattoo: 7058 BD: 01/29/17 Bull  
 Act. BW 79 lbs Adj. WW 883 lbs WW Ratio 120

Connealy Consensus #  
**K C F Bennett Fortress**  
 17259012 Thomas Patricia 9705  
 Hart Upward 1225  
**Hart Cynthia 5244**  
 18312980 Hart Cynthia 9044

KMK Alliance 6595 187 #  
 Blinda of Conanga 004  
 S S Objective T510 0T26 #  
 Thomas Patricia 71138  
 Sitz Upward 307R #  
 Hart Zara Queen 7122 #  
 S A V Final Answer 0035 #  
 Hart Cynthia 7168



PRODUCTION EPDs				MATERNAL EPDs			\$ VALUES					
CED	BW	WW	YW	HP	CEM	Milk	\$W	\$F	\$G	\$B		
+11	+0.7	+78	+139	+9.4	+12	+35	+90.06	+104.96	+40.46	+166.56		
CARCASS	CW	+61	.38	MARB	+54	.34	REA	+92	.34	FAT	-0.032	.30

- Dam's Production: NR 1@120.
- Born unassisted out of a first-calf heifer that recorded individual performance of WWR 107 and YWR 106.
- At 883 lbs, he posted the #1 heaviest adjusted 205 day wt in the sale offering.
- He ranks in the top 1% for WW and YW EPDs as well as \$W value among non-parent bulls.
- Recommended for heifers and cows.

**62** Hart Fortress 7147  
 Reg: 18940743 Tattoo: 7147 BD: 02/07/17 Bull  
 Act. BW 66 lbs Adj. WW 765 lbs WW Ratio 104

Connealy Consensus #  
**K C F Bennett Fortress**  
 17259012 Thomas Patricia 9705  
 H A R B Icon 019  
**Hart Lady 4081**  
 17988268 Hart Miss New Design 7022

KMK Alliance 6595 187 #  
 Blinda of Conanga 004  
 S S Objective T510 0T26 #  
 Thomas Patricia 71138  
 S A V Final Answer 0035 #  
 H A R B Belle Nellie 702-707  
 Hart New Design 5277  
 Hart Miss Precision 4120



PRODUCTION EPDs				MATERNAL EPDs			\$ VALUES					
CED	BW	WW	YW	HP	CEM	Milk	\$W	\$F	\$G	\$B		
+11	+1.0	+70	+126	+10.5	+12	+32	+74.69	+89.81	+27.92	+133.60		
CARCASS	CW	+47	.40	MARB	+50	.36	REA	+25	.36	FAT	+0.13	.32

- Dam's Production: BR 2@80, NR 2@104.
- Maternal grandsire, HARB Icon 019 was the \$18,000 third top-selling bull of the 2010 Midland Bull Test and described as a robust, deep ribbed, thick hipped bull with true curve-bending tendencies verified by progeny ratios of WWR 360@102, and YWR 161@103. 109 daughters of Icon have weaned 236 calves with a collective nursing ratio of 102.
- He ranks in the top 5% for WW and top 3% for YW EPD and \$W value among non-parent bulls.
- Recommended for heifers and cows.

**63** Hart Fortress 7127  
 Reg: 18940728 Tattoo: 7127 BD: 02/05/17 Bull  
 Act. BW 73 lbs BWR 98 Adj. WW 750 lbs WW Ratio 102

Connealy Consensus #  
**K C F Bennett Fortress**  
 17259012 Thomas Patricia 9705  
 Connealy Prototype  
**Hart Queen Rosella 5301**  
 18313008 Hart Queen Rosella 2075

KMK Alliance 6595 187 #  
 Blinda of Conanga 004  
 S S Objective T510 0T26 #  
 Thomas Patricia 71138  
 Rito 9M25 of Rita 5F56 Pred  
 Hera of Conanga 557 026L #  
 H A R B Icon 019  
 Hart Queen Rosella 8303



PRODUCTION EPDs				MATERNAL EPDs			\$ VALUES					
CED	BW	WW	YW	HP	CEM	Milk	\$W	\$F	\$G	\$B		
+9	+1.4	+71	+116	+5.8	+12	+29	+81.67	+67.87	+31.82	+122.75		
CARCASS	CW	+42	.40	MARB	+48	.36	REA	+49	.36	FAT	+0.12	.32

- Dam's Production: BR 1@98, NR 1@102.
- Born unassisted out of a first-calf heifer by the Genex featured, Connealy Prototype.
- He ranks in the top 4% for WW EPD and the top 1% for \$W value among non-parent bulls in the breed.
- Recommended for heifers and cows.



## Sons of EF Commando 1366



**HART COMMANDO 7016 • LOT 64**

**64**

### Hart Commando 7016

Reg: 18940697 Tattoo: 7016 BD: 01/24/17 Bull  
Act. BW 79 lbs Adj. WW 849 lbs WW Ratio 116

EF Complement 8088 #  
**EF Commando 1366**  
17082311 Riverbend Young Lucy W1470

Baldrige Waylon W34  
**Hart Blackcap Maid Et 5450**  
18315386 Hart Miss Right Time 5514

Basin Franchise P142 #  
EF Everelda Entense 6117  
B/R Ambush 28 #  
Riverbend Young Lucy T1080  
GAR-EGL Protege #  
Baldrige Blackcap T163  
Pine Creek Right Time 1147 #  
Hart Lady Focus 1616



PRODUCTION EPDs				MATERNAL EPDs			\$ VALUES					
CED	BW	WW	YW	HP	CEM	Milk	\$W	\$F	\$G	\$B		
+6	+2.2	+69	+119	+9.9	+13	+28	+72.21	+86.27	+43.07	+167.80		
<b>CARCASS</b>	<b>CW</b>	<b>+55</b>	<b>.40</b>	<b>MARB</b>	<b>+87</b>	<b>.35</b>	<b>REA</b>	<b>+59</b>	<b>.36</b>	<b>FAT</b>	<b>+010</b>	<b>.32</b>

- Dam's Production: NR 1@116.
- Born unassisted out of a first-calf heifer.
- Maternal grandsire, Baldrige Waylon W34 gained national attention as the \$39,000 (3% interest) featured bull of the 2013 Bases Loaded Sale. Waylon is an outcross performance and carcass trait giant with a moderate frame size. His first set of bull calves at Baldrige Bros. averaged \$14,375 in the 2012 Baldrige Bros. Sale and the top-selling bull in the 2015 sale at \$100,000 2/3 interest was a Waylon son.
- He ranks in the top 5% or better for WW EPD, \$W and \$B value.

**65**

### Hart Commando 7003

Reg: 18940708 Tattoo: 7003 BD: 01/16/17 Bull  
Act. BW 79 lbs Adj. WW 834 lbs WW Ratio 113

EF Complement 8088 #  
**EF Commando 1366**  
17082311 Riverbend Young Lucy W1470

Musgrave Mel  
**Hart Miss Rosella 5122**  
18312926 Hart Miss Rosella 1156

Basin Franchise P142 #  
EF Everelda Entense 6117  
B/R Ambush 28 #  
Riverbend Young Lucy T1080  
MCATL Pure Product 903-55 #  
MCATL Lady Barbara 1079-295  
S A V Iron Mountain 8066 #  
Hart Miss Rosella 7132 #



PRODUCTION EPDs				MATERNAL EPDs			\$ VALUES					
CED	BW	WW	YW	HP	CEM	Milk	\$W	\$F	\$G	\$B		
+7	+0.1	+70	+119	+9.9	+9	+24	+72.43	+78.95	+37.16	+139.42		
<b>CARCASS</b>	<b>CW</b>	<b>+45</b>	<b>.38</b>	<b>MARB</b>	<b>+81</b>	<b>.34</b>	<b>REA</b>	<b>+51</b>	<b>.34</b>	<b>FAT</b>	<b>+050</b>	<b>.30</b>

- Dam's Production: NR 1@113.
- Born unassisted out of a first-calf heifer by the \$32,500 Musgrave Mel.
- He ranks in the top 5% for WW EPD and the top 4% for \$W value among non-parent bulls in the breed.
- Recommended for heifers and cows.

**66**

### Hart Commando 7060

Reg: 18940699 Tattoo: 7060 BD: 01/30/17 Bull  
Act. BW 75 lbs Adj. WW 812 lbs WW Ratio 110

EF Complement 8088 #  
**EF Commando 1366**  
17082311 Riverbend Young Lucy W1470

A A R Ten X 7008 S A #  
**Hart Liberty Belle 5059**  
18315323 Hart Liberty Belle 0478 #

Basin Franchise P142 #  
EF Everelda Entense 6117  
B/R Ambush 28 #  
Riverbend Young Lucy T1080  
Mytty In Focus #  
A A R Lady Kelton 5551 #  
S A V John Wayne 6220  
Hart Miss Backstop 2465 #



PRODUCTION EPDs				MATERNAL EPDs			\$ VALUES					
CED	BW	WW	YW	HP	CEM	Milk	\$W	\$F	\$G	\$B		
+10	+1.7	+58	+102	+11.4	+13	+27	+64.56	+56.55	+36.32	+132.83		
<b>CARCASS</b>	<b>CW</b>	<b>+44</b>	<b>.40</b>	<b>MARB</b>	<b>+78</b>	<b>.35</b>	<b>REA</b>	<b>+45</b>	<b>.36</b>	<b>FAT</b>	<b>+045</b>	<b>.32</b>

- Dam's Production: NR 1@110.
- Born unassisted out of a first-calf heifer that posted individual performance featuring a BWR 93, WWR 110, YWR 101, and IMF ratio 113.
- His grandam is a second-generation Pathfinder dam with progeny ratios of BR 6@95, NR 6@105, YR 5@101, IMF 4@103 and RE 4@100. She has produced herd sires for Jonathan Rohrbach, Roscoe SD and Carmen Essig, Lehr ND.
- Recommended for heifers and cows.

**67**

### Hart Commando 7057

Reg: 18940701 Tattoo: 7057 BD: 01/29/17 Bull  
Act. BW 80 lbs Adj. WW 758 lbs WW Ratio 103

EF Complement 8088 #  
**EF Commando 1366**  
17082311 Riverbend Young Lucy W1470

E&B Blackjack 321  
**Hart Miss Rosella 5486**  
18313055 Hart Miss Rosella 1147

Basin Franchise P142 #  
EF Everelda Entense 6117  
B/R Ambush 28 #  
Riverbend Young Lucy T1080  
Connealy Consensus 7229 #  
E&B Lady New Frontier 654 #  
S A V Final Answer 0035 #  
Hart Miss New Design 6475



PRODUCTION EPDs				MATERNAL EPDs			\$ VALUES					
CED	BW	WW	YW	HP	CEM	Milk	\$W	\$F	\$G	\$B		
+8	+2.0	+61	+107	+11.4	+9	+29	+64.40	+67.02	+40.76	+123.12		
<b>CARCASS</b>	<b>CW</b>	<b>+34</b>	<b>.40</b>	<b>MARB</b>	<b>+53</b>	<b>.36</b>	<b>REA</b>	<b>+82</b>	<b>.36</b>	<b>FAT</b>	<b>-003</b>	<b>.32</b>

- Dam's Production: NR 1@103.
- Born unassisted out of a first-calf heifer that bested her contemporaries with individual performance that featured a WWR 110, YWR 111, and IMF ratio 136.
- His grandam was also a performance over-achiever with an individual BWR 94, WWR 116, YWR 107 and RE ratio 113.
- Recommended for heifers and cows.

**68**

### Hart Commando 7039

Reg: 18940698 Tattoo: 7039 BD: 01/27/17 Bull  
Act. BW 73 lbs Adj. WW 739 lbs WW Ratio 101

EF Complement 8088 #  
**EF Commando 1366**  
17082311 Riverbend Young Lucy W1470

A A R Ten X 7008 S A #  
**Hart Blackcap Maid Et 5426**  
18315365 Hart Miss Right Time 5514

Basin Franchise P142 #  
EF Everelda Entense 6117  
B/R Ambush 28 #  
Riverbend Young Lucy T1080  
Mytty In Focus #  
A A R Lady Kelton 5551 #  
Pine Creek Right Time 1147 #  
Hart Lady Focus 1616



PRODUCTION EPDs				MATERNAL EPDs			\$ VALUES					
CED	BW	WW	YW	HP	CEM	Milk	\$W	\$F	\$G	\$B		
+9	+1.4	+70	+129	+8.7	+13	+23	+65.52	+97.97	+37.47	+146.94		
<b>CARCASS</b>	<b>CW</b>	<b>+47</b>	<b>.40</b>	<b>MARB</b>	<b>+81</b>	<b>.36</b>	<b>REA</b>	<b>+44</b>	<b>.36</b>	<b>FAT</b>	<b>+037</b>	<b>.32</b>

- Dam's Production: BR 1@98, NR 1@101.
- Born unassisted out of a first-calf heifer.
- The grandam, Hart Miss Right Time 5514 was a prolific donor in the Hart Angus program that produced the \$7000 and \$6500 flush brothers in the 2016 sale that sold to Darin Zuehlke, Britton SD and Loren Helmer, Andover SD.
- He ranks in the top 5% for WW and top 3% for YW EPDs.
- Recommended for heifers and cows.



**HART WAYLON ET 5462**

\$7,000 maternal brother to the dam of lot 68 selected by Darin Zuehlke, SD

## Sons of "Commando" and "Ranger"



**HART COMMANDO 7019 • LOT 69**

### 69 Hart Commando 7019

Reg: 18940705 Tattoo: 7019 BD: 01/24/17 Bull  
Act. BW 79 lbs Adj. WW 817 lbs WW Ratio 111

EF Complement 8088 #  
**EF Commando 1366**  
17082311 Riverbend Young Lucy W1470

PA Record Breaker 3480  
**Hart Lady Texan 5231**  
18312975 Hart Lady Texan 3050

Basin Franchise P142 #  
EF Everelda Entense 6117  
B/R Ambush 28 #  
Riverbend Young Lucy T1080  
GAR Objective 7125 #  
S V F Woodlawn Rita U016  
H A R B Icon 019  
Hart Lady Texan 7010



PRODUCTION EPDs				MATERNAL EPDs			\$ VALUES			
CED	BW	WW	YW	HP	CEM	Milk	\$W	\$F	\$G	\$B
+11	+0.3	+74	+122	+10.5	+13	+18	+70.34	+79.79	+48.88	+159.46
CARCASS		CW	+51 .38	MARB	+94 .34	REA	+84 .34	FAT	+010 .30	

- Dam's Production: NR 1@111.
- His dam was a standout in her contemporary group posting individual performance featuring a WWR 109, YWR 112, IMF ratio 123 and RE ratio 108.
- His grandam has nursing ratio of 3@107.
- Maternal grandsire, PA Record Breaker 3480 was Brad and Alex Hart's \$9000 selection from the 2014 Peterson Angus Bull Sale where he posted an IMF ratio 126, RE ratio 108 and Rib fat ratio 80. His high marbling tendencies bred-through, verified by the 16 progeny that have an average IMF ratio of 133.
- Recommended for heifers and cows.

### 70 Hart Ranger 7201

Reg: 18942387 Tattoo: 7201 BD: 02/09/17 Bull  
Act. BW 79 lbs Adj. WW 759 lbs WW Ratio 103

AAR Ten X 7008 S A #  
**V A R Ranger 3008**  
17455083 Sandpoint Blackbird 8809

Hart Final Answer 1017  
**Hart Queen Bessie 4306**  
17988362 Hart Queen Bessie 8300 #

Mytty In Focus #  
AAR Lady Kelton 5551 #  
Connealy Onward #  
Riverbend Blackbird 4301  
S A V Final Answer 0035 #  
Hart Whitney 9201  
C&M Sterling Precision  
Hart Queen Bessie 4068 #



PRODUCTION EPDs				MATERNAL EPDs			\$ VALUES			
CED	BW	WW	YW	HP	CEM	Milk	\$W	\$F	\$G	\$B
+2	+4.1	+78	+139	+10.0	+8	+26	+66.55	+114.73	+35.13	+171.00
CARCASS		CW	+61 .40	MARB	+46 .35	REA	+79 .36	FAT	-.024 .32	

- Dam's Production: BR 1@99, NR 1@103.
- This bull ranks in the top 1% for WW and YW EPDs and the top 2% for \$B value.
- His dam was a standout in her contemporary group posting a BWR 99, WWR 106 and YWR 111. Her first-calves were twin heifers by Baldrige Jennings Z064 that have been retained.

### 71 Hart Ranger 7078

Reg: 18942406 Tattoo: 7078 BD: 02/01/17 Bull  
Act. BW 86 lbs Adj. WW 776 lbs WW Ratio 106

AAR Ten X 7008 S A #  
**V A R Ranger 3008**  
17455083 Sandpoint Blackbird 8809

HARB Pendleton 765 J H #  
**Hart Blackcap Maid 0054**  
16815503 Hart Blackcap Maid 8550 #

Mytty In Focus #  
AAR Lady Kelton 5551 #  
Connealy Onward #  
Riverbend Blackbird 4301  
S A V Final Answer 0035 #  
H A R B Black Lady 375 J H #  
Hart Precision 5913 #  
Hart Miss LTD 0018 5475



PRODUCTION EPDs				MATERNAL EPDs			\$ VALUES			
CED	BW	WW	YW	HP	CEM	Milk	\$W	\$F	\$G	\$B
+6	+1.1	+62	+106	+8.8	+10	+29	+66.11	+69.13	+22.41	+138.22
CARCASS		CW	+50 .40	MARB	+34 .36	REA	+62 .36	FAT	+040 .32	

- Dam's Production: BR 6@98, NR 6@102, YR 4@100.
- Maternal brothers include the herd sire selections of Thor Sand, Ellendale, ND at \$3750 and Jeremy Tortenson, Milbank SD at \$6000. His 2014 maternal sister is retained in the herd.
- Pathfinder grandam.

### 72 Hart Ranger 7081

Reg: 18942389 Tattoo: 7081 BD: 02/02/17 Bull  
Act. BW 71 lbs Adj. WW 783 lbs WW Ratio 107

AAR Ten X 7008 S A #  
**V A R Ranger 3008**  
17455083 Sandpoint Blackbird 8809

Connealy Cavalry 1149  
**Hart Alice 4237**  
17988328 Hart Lady Traveler 7137

Mytty In Focus #  
AAR Lady Kelton 5551 #  
Connealy Onward #  
Riverbend Blackbird 4301  
Connealy Consensus #  
Brista of Conanga 927T  
S A V 8180 Traveler 004 #  
Hart Miss Fame 0021



PRODUCTION EPDs				MATERNAL EPDs			\$ VALUES			
CED	BW	WW	YW	HP	CEM	Milk	\$W	\$F	\$G	\$B
+13	-0.7	+57	+95	+14.7	+16	+24	+59.84	+53.68	+45.14	+131.55
CARCASS		CW	+35 .40	MARB	+86 .36	REA	+53 .36	FAT	+017 .32	

- Dam's Production: BR 2@91, NR 2@108, YR 1@105.
- His maternal brother by "Commando" recorded a BWR 93, WWR 108, YWR 105 and was selected by Thor Sand, Ellendale ND from the 2017 offering.
- This calving ease prospect ranks in the top 5% for CED.
- Recommended for heifers and cows.



**HART COMMANDO 6058**

\$5,000 Maternal brother to Lot 72  
selected by Thor Sand, Ellendale, ND

### 73 Hart Ranger 7135

Reg: 18942391 Tattoo: 7135 BD: 02/06/17 Bull  
Act. BW 92 lbs Adj. WW 872 lbs WW Ratio 119

AAR Ten X 7008 S A #  
**V A R Ranger 3008**  
17455083 Sandpoint Blackbird 8809

ALC Destiny D82U  
**Hart Zara 3333**  
17672335 Hart Zara 9003 #

Mytty In Focus #  
AAR Lady Kelton 5551 #  
Connealy Onward #  
Riverbend Blackbird 4301  
GAR Predestined #  
ALC LYN T03L  
S A V Final Answer 0035 #  
Hart Zara 7003



PRODUCTION EPDs				MATERNAL EPDs			\$ VALUES			
CED	BW	WW	YW	HP	CEM	Milk	\$W	\$F	\$G	\$B
+5	+3.1	+84	+137	+13.6	+11	+25	+79.65	+104.07	+35.52	+155.11
CARCASS		CW	+52 .41	MARB	+57 .36	REA	+58 .36	FAT	+002 .33	

- Dam's Production: NR 3@109.
- He recorded the #2 heaviest adjusted 205 day wt in the sale offering. Moreover, he ranks in the top 1% for WW and YW EPDs as well as \$W value among non-parent bulls.
- His dam was a performance standout in her contemporary group. She recorded a BWR 97, WWR 115, YWR 110, IMF ratio 129 and RE ratio 111. Her 2016 daughter posted an individual WWR 111 and was systematically returned to the breeding herd.

## Sons of "Generation 2100" and "Ten Speed"



**HART GENERATION ET 7568 • LOT 74**

### 74 Hart Generation Et 7568

Reg: +18913784 Tattoo: 7568 BD: 03/01/17 Bull  
Act. BW 65 lbs Adj. WW 793 lbs WW Ratio 100

Connealy Consensus 7229 #  
**V A R Generation 2100**  
17171587 Sandpoint Blackbird 8809

PA Power Tool 9108 #  
**EF Lucy 3054**  
17625525 Riverbend Young Lucy W1470

Connealy Consensus #  
Blue Lilly of Conanga 16  
Connealy Onward #  
Riverbend Blackbird 4301  
G A R Predestined #  
Shamrocks Beebe Queen 3095  
B/R Ambush 28 #  
Riverbend Young Lucy T1080



PRODUCTION EPDs				MATERNAL EPDs				\$ VALUES				
CED	BW	WW	YW	HP	CEM	Milk	\$W	\$F	\$G	\$B		
+15	-1.2	+57	+111	+10.0	+14	+28	+66.53	+67.82	+51.34	+126.30		
<b>CARCASS</b>	<b>CW</b>	<b>+34</b>	<b>.42</b>	<b>MARB</b>	<b>+99</b>	<b>.38</b>	<b>REA</b>	<b>+92</b>	<b>.38</b>	<b>FAT</b>	<b>+035</b>	<b>.35</b>

- Dam's Production: BR 2@87, NR 2@104.
- His donor dam is a maternal sister to the highly acclaimed Genex calving ease sire, EF Commando 1366. Angus aficionados will know that "Commando" was used enthusiastically in the Baldrige program where he sired the \$157,000 breed sensation, Baldrige Bronc to Mile High Angus/Select Sires, the \$150,000 Baldrige Commando CO36 to ABS Global and the \$100,000 Baldrige 38 Special, selected by Hoover Angus and Alta Genetics.
- He shares the #3 highest CED EPD and the #4 lowest BW EPD ranking in the top 2% for CED among non-parent bulls.
- Maternal brothers sell as Lots 9, 10, and 42.
- Recommended for heifers and cows.



**EF COMMANDO 1366**

Maternal brother to the dam of lot 74

### 75 Hart Generation Et 7555

Reg: +18913779 Tattoo: 7555 BD: 02/27/17 Bull  
Act. BW 71 lbs Adj. WW 850 lbs WW Ratio 100

Connealy Consensus 7229 #  
**V A R Generation 2100**  
17171587 Sandpoint Blackbird 8809

PA Fortitude 2500  
**PA Rita 1162-B1030**  
17729529 BJ Complete 1162

Connealy Consensus #  
Blue Lilly of Conanga 16  
Connealy Onward #  
Riverbend Blackbird 4301  
GAR-EGE Protege #  
G G Clara 0171  
Summitcrest Complete 1P55 #  
BJ 5050 New Design 9162



PRODUCTION EPDs				MATERNAL EPDs				\$ VALUES				
CED	BW	WW	YW	HP	CEM	Milk	\$W	\$F	\$G	\$B		
+6	+1.6	+55	+105	+11.7	+12	+26	+56.12	+70.60	+43.29	+136.66		
<b>CARCASS</b>	<b>CW</b>	<b>+38</b>	<b>.41</b>	<b>MARB</b>	<b>+75</b>	<b>.38</b>	<b>REA</b>	<b>+56</b>	<b>.37</b>	<b>FAT</b>	<b>+005</b>	<b>.34</b>

- Dam's Production: NR 2@106.
- His donor dam was the 2nd top-selling open heifer at the 2015 Peterson Angus Sale selected by Brad and Alex Hart to join their donor team. She is sired by the \$75,000 Genex sire, PA Fortitude 2500 and enjoys a balanced EPD attack culminating in a \$B value in the top 4% of current dams.
- Three ET sisters and two natural maternal sisters are retained at Hart Angus Farms.
- He recorded the #5 heaviest adjusted 205-day wt in the sale offering.
- Recommended for heifers and cows.



**HART TEN SPEED 7215 • LOT 76**

### 76 Hart Ten Speed 7215

Reg: 18940901 Tattoo: 7215 BD: 02/10/17 Bull  
Act. BW 94 lbs Adj. WW 774 lbs WW Ratio 105

A A R Ten X 7008 S A #  
**S A V Ten Speed 3022**  
17633563 S A V Madame Pride 1134

S A V Iron Mountain 8066 #  
**Hart Blackcap Lady 2080**  
17403453 Hart Blackcap Lady 9099 #

Mytly In Focus #  
A A R Lady Kelton 5551 #  
S A V Bismarck 5682 #  
S A V Madame Pride 9100  
T C Gridiron 258 #  
S A V Madame Pride 3249  
F V 20K King 308M #  
Hart Lady Notch 5088 #



PRODUCTION EPDs				MATERNAL EPDs				\$ VALUES				
CED	BW	WW	YW	HP	CEM	Milk	\$W	\$F	\$G	\$B		
+0	+3.3	+77	+127	+13.9	+6	+19	+66.38	+93.30	+14.11	+137.01		
<b>CARCASS</b>	<b>CW</b>	<b>+54</b>	<b>.38</b>	<b>MARB</b>	<b>+19</b>	<b>.33</b>	<b>REA</b>	<b>+48</b>	<b>.34</b>	<b>FAT</b>	<b>+025</b>	<b>.30</b>

- Dam's Production: NR 4@103, YR 2@112.
- His dam recorded individual performance of WWR 110 and YWR 106 just prior to her induction into the Hart Angus breeding program.
- His maternal brother was the herd sire selection of Hammond Farm, Orient SD while a maternal sister is working in the Gary Blocker herd at Hosmer SD.
- He ranks in the top 2% for WW EPD and top 3% for YW EPD.
- His sire, SAV Ten Speed 3022 was the \$250,000 top-selling bull of the 2014 SAV Sale and is one of Ten X's most powerful and complete sons phenotypically and on paper. He's admired by many for his rib shape, width of base, muscle shape and correctness.



**SAV TEN SPEED 3022**

Sire of lot 76

### VAR GENERATION 2100

Sire of lot 75



## Sons of "Ten X" and "Titan"



**HART TEN X ET 7558 • LOT 77**



**HART TEN X ET 5454**

\$9,500 full brother to Lot 77  
selected Darin Zuehke, Britton, SD

- Dam's Production: BR 6@99, NR 6@100, YR 4@104.
- A flush brother in the 2016 sale sold to Darin Zuehke, Britton, SD at \$9500.
- His donor dam produced flushmate bulls in the 2015 sale selected by Penrhos Farms, Britton SD at \$4250 and Burnel Domine, LaMoure SD at \$4500: a bull that sold to Pat Griswold of Dallas, TX in 2010 and a bull that sold to Dean and Daniel Bottum of Tulare, SD for \$3900 in '09 sale.
- Maternal grandsire, Pine Creek Right Time 1147 is a Hart Angus Farms Pathfinder sire and maternal brother to Sitz Traveler 8180, Sitz Traveler 043, and Sitz Traveler 9929.

### 77 Hart Ten X Et 7558

Reg: +18915890 Tattoo: 7558 BD: 02/27/17 Bull  
Act. BW 71 lbs Adj. WW 811 lbs WW Ratio 100

Mytty In Focus #  
**A A R Ten X 7008 S A**  
15719841 A A R Lady Kelton 5551

Pine Creek Right Time 1147 #  
**Hart Miss Right Time 5514**  
15192562 Hart Lady Focus 1616

S A F Focus of E R #  
Mytty Countess 906  
S A V Adaptor 2213  
H S A F Lady Kelton 504B  
Leachman Right Time #  
Sitz Everelda Entense 1137  
Focus 099  
Hart Miss Rocky Ext 8385



PRODUCTION EPDs				MATERNAL EPDs			\$ VALUES				
CED	BW	WW	YW	HP	CEM	Milk	\$W	\$F	\$G	\$B	
+4	+2.2	+54	+104	+8.4	+11	+23	+51.20	+62.03	+29.81	+145.85	
<b>CARCASS</b>	<b>CW</b>	+56	.40	<b>MARB</b>	+54	.37	<b>REA</b>	+56	.37	<b>FAT</b>	+0.30 .33

### 78 Hart Titan 7051

Reg: 18942454 Tattoo: 7051 BD: 01/28/17 Bull  
Act. BW 88 lbs Adj. WW 793 lbs WW Ratio 108

Baldrige Waylon W34  
**Baldrige Titan A139**  
17821946 Baldrige Forever Lady T269

Connealy Checkmark  
**Hart Blackcap Maid 5255**  
18312985 Hart Blackcap Maid 2178 #

GAR-EGL Protege #  
Baldrige Blackcap T163  
Baldrige Rapid R31  
Baldrige Forever Lady P164  
Connealy Trustmark  
Endreena of Conanga 873B  
Sitz Upward 307R #  
Hart Miss LTD 0018 5475



PRODUCTION EPDs				MATERNAL EPDs			\$ VALUES				
CED	BW	WW	YW	HP	CEM	Milk	\$W	\$F	\$G	\$B	
+5	+2.2	+74	+137	+13.9	+11	+21	+69.69	+109.38	+32.12	+172.85	
<b>CARCASS</b>	<b>CW</b>	+69	.40	<b>MARB</b>	+52	.35	<b>REA</b>	+71	.35	<b>FAT</b>	+0.02 .31



**HART TITAN 7051 • LOT 78**



**BALDRIDGE TITAN A129**

Sire of lot 78

- Dam's Production: NR 1@108.
- Born unassisted out of a first-calf heifer that posted individual performance of WWR 107, YWR 106 and RE ratio 105.
- He ranks in the top 2% for WW and YW EPDs as well as \$B value.
- Baldrige Titan A139 is without question, one of the elite bulls to sell in 2015 from Baldrige Bros to Triple D Genetics, IL for \$100,000. His dam, Baldrige Forever Lady T269 produced the top selling bull in the 2012 Baldrige sale, Baldrige Yahoo Y58 to Accelerated Genetics and currently posts BWR 4@97, NR 4@111 and IMF 13@115.

## Sons of "Now Look" and "Traction"



Hart

### HART NOW LOOK 7014 • LOT 79

## 79 Hart Now Look 7014

Reg: 18940657 Tattoo: 7014 BD: 01/23/17 Bull  
Act. BW 76 lbs Adj. WW 815 lbs WW Ratio 111

Connealy Sullivan 83A #  
**McKellar Now Look**  
16905775 JMc Pearl's Answer 8446 6465

Musgrave Mel  
**Hart Miss Alice 5192**  
18312955 Hart Miss Alice 0155

Connealy Tobin  
Breasha of Conanga 1251  
S A V Final Answer 0035 #  
JMc Pearl Pride 6465 5289 #  
MCATL Pure Product 903-55 #  
MCATL Lady Barbara 1079-295  
Sitz Upward 307R #  
Hart Lady Bando 4072



PRODUCTION EPDs				MATERNAL EPDs				\$ VALUES			
CED	BW	WW	YW	HP	CEM	Milk	\$W	\$F	\$G	\$B	
+6	+1.1	+69	+123	+13.3	+7	+24	+68.19	+69.68	+40.19	+126.50	
CARCASS	CW	REA	FAT	MARB	REAR	FAT	REA	FAT	REA	FAT	
	+45	.37		.33	+51	.33	+86	.33	FAT	-.020 .29	

- Dam's Production: NR 1@111.
- Born unassisted out of a first-calf heifer by the \$32,500 Musgrave Mel.
- His sire, McKellar Now Look is a Genex featured curve-bender with calving ease credentials. His progeny excel in muscle shape and performance while being moderate, attractive and structurally correct.
- He ranks in the top 5% for both WW and YW EPDs among non-parent bulls.
- Recommended for larger heifers and cows.

## 80 Hart Traction 7216

Reg: 18940737 Tattoo: 7216 BD: 02/10/17 Bull  
Act. BW 69 lbs Adj. WW 732 lbs WW Ratio 100

Sitz Top Game 561X  
**JMB Traction 292**  
17262374 JMB Emulota 013

SydGen Contract 9410 #  
**Hart GWYNYTH 4179**  
17988301 Hart GYNYTH 6600

GDAR Game Day 449 #  
Sitz Pride 88T #  
S A V 004 Predominant 4438 #  
BAR S Emulota 5426 #  
SydGen Contact #  
Basin Lady M017 #  
M G S A 9440 Scotch Cap 923  
Hart Gynyth 232

PRODUCTION EPDs				MATERNAL EPDs				\$ VALUES			
CED	BW	WW	YW	HP	CEM	Milk	\$W	\$F	\$G	\$B	
+9	-0.2	+57	+111	+12.1	+13	+37	+65.67	+86.74	+17.36	+137.00	
CARCASS	CW	REA	FAT	MARB	REAR	FAT	REA	FAT	REA	FAT	
	+48	.40		.36	+24	.36	+37	.36	FAT	+018 .32	

- Dam's Production: BR 2@92, NR 2@100, YR 1@100.
- Tyler Burton, Redfield, SD selected his maternal brother in 2017.
- Maternal grandsire, SydGen co-owned by Hart Angus Farms, was the \$65,000 top-selling bull of the 2010 Midland Bull Test descending from a Pathfinder dam.
- Recommended for heifers and cows.



### SYDGEN CONTRACT 9410

Co-owned by Hart Angus Farms and maternal grandsire of Lot 80



Origin

## 81 Hart Traction 7195

Reg: 18940806 Tattoo: 7195 BD: 02/09/17 Bull  
Act. BW 62 lbs Adj. WW 757 lbs WW Ratio 103

Sitz Top Game 561X  
**JMB Traction 292**  
17262374 JMB Emulota 013

Hart Precision 5913 #  
**Hart Blackcap Maid 8387 #**  
16216018 Hart Lady Strategy 5071

GDAR Game Day 449 #  
Sitz Pride 88T #  
S A V 004 Predominant 4438 #  
BAR S Emulota 5426 #  
C&M Sterling Precision  
Hart Pamela 2824  
S A F Strategy 9015 #  
Hart Miss Scotchcap 3400



PRODUCTION EPDs				MATERNAL EPDs				\$ VALUES			
CED	BW	WW	YW	HP	CEM	Milk	\$W	\$F	\$G	\$B	
+11	-1.1	+54	+101	+11.4	+13	+32	+71.04	+61.59	+9.83	+95.54	
CARCASS	CW	REA	FAT	MARB	REAR	FAT	REA	FAT	REA	FAT	
	+36	.39		.34	+07	.34	+40	.34	FAT	+029 .30	

- Dam's Production: BR 8@90, NR 8@103, YR 4@101.
- This calving ease prospect boasts a double-digit CED and the 5th lowest BW EPD in the bull offering.
- His maternal brother was the \$5000 selection of Ernest Weisbeck, Herried SD and another sold to Bradley Nelson, Webster SD.
- The Pathfinder dam has also produced two herd replacements.
- Recommended for heifers and cows.

## 82 Hart Traction 7228

Reg: 18940722 Tattoo: 7228 BD: 02/11/17 Bull  
Act. BW 79 lbs Adj. WW 791 lbs WW Ratio 108

Sitz Top Game 561X  
**JMB Traction 292**  
17262374 JMB Emulota 013

Connealy Checkmark  
**Hart Queen Perfecta 4316**  
17988366 Hart Queen Perfecta 1162

GDAR Game Day 449 #  
Sitz Pride 88T #  
S A V 004 Predominant 4438 #  
BAR S Emulota 5426 #  
Connealy Trustmark  
Endreana of Conanga 873B  
H A R B Icon 019  
Hart Queen Perfecta 4400 #



PRODUCTION EPDs				MATERNAL EPDs				\$ VALUES			
CED	BW	WW	YW	HP	CEM	Milk	\$W	\$F	\$G	\$B	
+3	+2.0	+62	+118	+12.1	+7	+30	+66.12	+79.54	+19.53	+135.04	
CARCASS	CW	REA	FAT	MARB	REAR	FAT	REA	FAT	REA	FAT	
	+55	.40		.35	+12	.35	+83	.35	FAT	-.015 .31	

- Dam's Production: NR 2@109, YR 1@108.
- His maternal brother posted individual performance of WWR 110, YWR 108, IMF ratio 115 and RE ratio 103 selling to Steve Stratford, Pratt KS at \$8000.
- His dam was among the first daughters of the \$37,500 Connealy Checkmark to come into production. Today, 28 daughters in this herd post a collective nursing ratio of 102 on 35 calves.



### MCKELLAR NOW LOOK

Sire of lot 79

### HART PAYWEIGHT 6069

\$8,000 Maternal brother to Lot 82 selected by Steve Stratford, KS



Hart

## Flushmate sons of PA Safeguard 021



**PA SAFEGUARD 021**

Sire to Lots 83, 84 and 85



**HART MISTI 7017**

Dam to Lots 83, 84 and 85

## Thank You to Our Awesome Crew!

All of us at Hart Angus Farms would like to recognize three other very important members of the Hart Angus crew, Wade Decker, Garrick Waldner, and Derrick Ost. From being herdsman to farmers, and everything in between, we appreciate your hard work and dedication in keeping things running smoothly around here. We couldn't do what we do without you, so THANK YOU from the bottom of our Harts!

### 83 Hart Safeguard Et 7560

83

Reg: +18913689    Tattoo: 7560    BD: 02/28/17  
Act. BW 65 lbs    Adj. WW 781 lbs    WW Ratio 100

Bull

G A R New Design 5050 #  
**PA Safeguard 021**  
16772185 PA Lorna Marshall 2905-730

B/R New Design 036 #  
G A R Precision 706  
Woodhill Foresight #  
Petes 2905 Dateline Marshall  
S A F Focus of E R #  
Mytty Countess 906  
WAR Alliance 9126 6006 #  
Westwind Misti D J H 007

Mytty In Focus #  
**Hart Misti 7017 #**  
15942577 Hart Misti 5054



PRODUCTION EPDs				MATERNAL EPDs			\$ VALUES				
CEW	BW	WW	YW	HP	CEM	Milk	\$W	\$F	\$G	\$B	
+5	+1.9	+59	+100	+14.0	+9	+30	+69.90	+58.35	+56.02	+136.87	
<b>CARCASS</b>	<b>CW</b>	+33	.44	<b>MARB</b>	+1.11	.41	<b>REA</b>	+72	.40	<b>FAT</b>	-.009 .37

- Dam's Production: BR 5@97, NR 5@110, YR 5@106.
- Hart Misti 7017 has earned Pathfinder status with natural progeny ratios of BR 5@97, NR 5@110 and YR 5@106. Her 42 ultrasound progeny record an average IMF ratio 108, RE ratio 101, Fat ratio 99 and Rump fat ratio 99.
- He ranks in the top 5% for \$W among non-parent bulls.
- Recommended for larger heifers and cows.

### 84 Hart Safeguard Et 7548

84

Reg: +18913684    Tattoo: 7548    BD: 02/26/17  
Act. BW 59 lbs    Adj. WW 797 lbs    WW Ratio 100

Bull

G A R New Design 5050 #  
**PA Safeguard 021**  
16772185 PA Lorna Marshall 2905-730

B/R New Design 036 #  
G A R Precision 706  
Woodhill Foresight #  
Petes 2905 Dateline Marshall  
S A F Focus of E R #  
Mytty Countess 906  
WAR Alliance 9126 6006 #  
Westwind Misti D J H 007

Mytty In Focus #  
**Hart Misti 7017 #**  
15942577 Hart Misti 5054



PRODUCTION EPDs				MATERNAL EPDs			\$ VALUES				
CEW	BW	WW	YW	HP	CEM	Milk	\$W	\$F	\$G	\$B	
+5	+1.6	+59	+103	+9.4	+6	+33	+69.34	+56.40	+44.63	+136.48	
<b>CARCASS</b>	<b>CW</b>	+42	.42	<b>MARB</b>	+97	.39	<b>REA</b>	+53	.39	<b>FAT</b>	+032 .35

- Dam's Production: BR 5@97, NR 5@110, YR 5@106.
- The Pathfinder, donor dam of these flushmates has been an outstanding producer. Her 2011 son, Hart Mountaineer 1176 was the \$27,000 high selling lot 1 bull of the 2012 Hart Sale and is now an Accelerated Genetics standout. Her 2009 son, Hart Battleship 9010 sold to ABS Global and topped the 2010 Sale at \$23,000. Her 2010 son sold to Chris Castello, Tracy, CA at \$4250.
- Recommended for larger heifers and cows.

### 85 Hart Safeguard Et 7553

85

Reg: +18913688    Tattoo: 7553    BD: 02/27/17  
Act. BW 60 lbs    Adj. WW 819 lbs    WW Ratio 100

Bull

G A R New Design 5050 #  
**PA Safeguard 021**  
16772185 PA Lorna Marshall 2905-730

B/R New Design 036 #  
G A R Precision 706  
Woodhill Foresight #  
Petes 2905 Dateline Marshall  
S A F Focus of E R #  
Mytty Countess 906  
WAR Alliance 9126 6006 #  
Westwind Misti D J H 007

Mytty In Focus #  
**Hart Misti 7017 #**  
15942577 Hart Misti 5054



PRODUCTION EPDs				MATERNAL EPDs			\$ VALUES				
CEW	BW	WW	YW	HP	CEM	Milk	\$W	\$F	\$G	\$B	
+5	+1.0	+68	+120	+14.2	+7	+30	+71.46	+85.93	+52.20	+153.43	
<b>CARCASS</b>	<b>CW</b>	+42	.42	<b>MARB</b>	+1.08	.39	<b>REA</b>	+54	.39	<b>FAT</b>	-.013 .36

- Dam's Production: BR 5@97, NR 5@110, YR 5@106.
- PA Safeguard 021 featured on the ABS Global roster. Safeguard is an Angus Sire Alliance graduate that became one of ABS's "Rock Solid Accuracy" sires touting rapid growth, Scrotal, and Docility EPDs as well as a coveted 4 star carcass merit ranking. Safeguard has earned a reputation as a bull that adds carcass value, eye appeal and performance in an outcross package.
- He ranks in the top 4% for \$W among non-parent bulls.
- Recommended for larger heifers and cows.

## Sons of "Double Vision" and "Cavalry"



### HART CAVALRY ET 7556

LOT 88



### HART CAVALRY ET 3412

\$10,000 full brother to Lot 88  
selected by Jeff Frosting, SD

# 86

## Hart Double Vision 7278

Reg: 18940627    Tattoo: 7278    BD: 02/21/17    Bull  
Act. BW 76 lbs    Adj. WW 792 lbs    WW Ratio 108

Connealy Reflection #  
**Jindra Double Vision**  
16748826    Hoff Rachel 8312 405

R B Tour Of Duty 177  
**Hart Misti Et 5411**  
18317466    Hart Misti 7017 #

Bon View New Design 878 #  
Happy Grill of Conanga 6260  
Hoff Limited Edition S C 594 #  
Hoff Miss Expo S C 4223  
Werner War Party 2417 #  
B A Lady 6807 305  
Mytty In Focus #  
Hart Misti 5054



PRODUCTION EPDs				MATERNAL EPDs			\$ VALUES					
CEW	BW	WW	YW	HP	CEM	Milk	\$W	\$F	\$G	\$B		
+7	+2.8	+74	+132	+12.7	+16	+30	+75.36	+97.19	+40.09	+171.98		
<b>CARCASS</b>	<b>CW</b>	+65	.40	<b>MARB</b>	+56	.36	<b>REA</b>	+82	.36	<b>FAT</b>	-.040	.32

- Dam's Production: NR 1@108.
- Born unassisted out of a first-calf heifer that was produced in the embryo transplant program descending from the Pathfinder, foundation donor dam Hart Misti 7017.
- His dam is a full sister to the herd sire prospects that sell as lots 52,53,54 and 55. He ranks in the top 2% for WW and YW EPDs, \$W and \$B value among non-parent bulls.
- Recommended for heifers and cows.

# 87

## Hart Double Vision 7167

Reg: 18940634    Tattoo: 7167    BD: 02/08/17    Bull  
Act. BW 89 lbs    Adj. WW 838 lbs    WW Ratio 114

Connealy Reflection #  
**Jindra Double Vision**  
16748826    Hoff Rachel 8312 405

Sitz Upward 307R #  
**Hart Angela 1228 #**  
17099980    Hart Angela 2828

Bon View New Design 878 #  
Happy Grill of Conanga 6260  
Hoff Limited Edition S C 594 #  
Hoff Miss Expo S C 4223  
Connealy Onward #  
Sitz Henrietta Pride 81M  
T Lite of Westwind 859  
Westwind Angela D J H 797



PRODUCTION EPDs				MATERNAL EPDs			\$ VALUES					
CEW	BW	WW	YW	HP	CEM	Milk	\$W	\$F	\$G	\$B		
-1	+4.1	+64	+114	+14.0	+10	+28	+56.55	+77.08	+43.62	+167.02		
<b>CARCASS</b>	<b>CW</b>	+57	.41	<b>MARB</b>	+81	.37	<b>REA</b>	+69	.37	<b>FAT</b>	+0.000	.33

- Dam's Production: NR 5@107, YR 3@105.
- His Pathfinder dam also produced the \$7500 herd sire selection of Darin Zuehlke, Britton SD in 2017 and the \$7000 choice of William Grismer, Hosmer SD from the 2015 sale.

# 88

## Hart Cavalry Et 7556<sup>[DDC]</sup>

Reg: +18910933    Tattoo: 7556    BD: 02/27/17    Bull  
Act. BW 73 lbs    Adj. WW 856 lbs    WW Ratio 100

Connealy Consensus #  
**Connealy Cavalry 1149**  
17028951    Brista of Conanga 927T

Mytty In Focus #  
**Hart Misti 7017 #**  
15942577    Hart Misti 5054

KMK Alliance 6595 187 #  
Blinda of Conanga 004  
G A R Predestined #  
Breea of Conanga 3991  
S A F Focus of E R #  
Mytty Countess 906  
WAR Alliance 9126 6006 #  
Westwind Misti D J H 007



PRODUCTION EPDs				MATERNAL EPDs			\$ VALUES					
CEW	BW	WW	YW	HP	CEM	Milk	\$W	\$F	\$G	\$B		
+6	+1.1	+62	+103	+11.6	+11	+19	+62.48	+51.50	+36.17	+119.30		
<b>CARCASS</b>	<b>CW</b>	+39	.40	<b>MARB</b>	+62	.37	<b>REA</b>	+41	.37	<b>FAT</b>	+0.014	.34

- Dam's Production: BR 5@97, NR 5@110, YR 5@106.
- He is a full brother to the featured lots 1 and 2 bulls of the 2014 sale offering that were selected by Troy Weig, Mina SD at \$10,500 and Jeff Forsting, Columbia SD at \$10,000.
- He posted the #4 heaviest adjusted 205-day wt in the sale offering.
- Recommended for larger heifers and cows.



### HART CONVERSION 6109

\$7500 Maternal brother to Lot 87  
selected by Darin Zuehlke, Britton, SD

## Elite Heifer Offering



**HART BARBARA 7015 • LOT 89**



**BARSTOW BANKROLL B73**

Sire of lots 89 and 90

- Dam's Production: NR 1@112.
- Her dam is a first-calf heifer that earned her admittance into the Hart Angus Farms breeding program with individual performance highlighted by a WWR 101, YWR 105, IMF ratio 119, RE ratio 108 and Rib Fat ratio 90.
- She ranks in the top 1% for WW and YW EPDs as well as \$W among non-parent cows.

**89**

### Hart Barbara 7015

Reg: 18940251 Tattoo: 7015 BD: 01/23/17 Cow  
Act. BW 82 lbs Adj. WW 767 lbs WW Ratio 112

Barstow Cash  
Barstow Bankroll B73  
18036327 Barstow Miss Dianna Z25

E&B Blackjack 321  
Hart Barbara 5280  
18312998 Hart Barbara 2098

Sitz Dash 10277 #  
Barstow Queen W16  
CAR Efficient 534 #  
Barstow Miss Dianna X128 #  
Connealy Consensus 7229 #  
E&B Lady New Frontier 654 #  
Kesslers Frontman R001 #  
Hart Miss Precision 4426



PRODUCTION EPDs				MATERNAL EPDs			\$ VALUES					
CED	BW	WW	YW	HP	CEM	Milk	\$W	\$F	\$G	\$B		
+1	+3.0	+85	+152	+12.2	+8	+27	+80.99	+131.62	+16.18	+169.82		
<b>CARCASS</b>	<b>CW</b>	<b>+77</b>	<b>.38</b>	<b>MARB</b>	<b>+10</b>	<b>.33</b>	<b>REA</b>	<b>+1.03</b>	<b>.34</b>	<b>FAT</b>	<b>+008</b>	<b>.30</b>

**90**

### Hart Eileenmere Lady 7204

Reg: 18940286 Tattoo: 7204 BD: 02/09/17 Cow  
Act. BW 69 lbs Adj. WW 716 lbs WW Ratio 105

Barstow Cash  
Barstow Bankroll B73  
18036327 Barstow Miss Dianna Z25

Rito 9M25 of Rita 5F56 Pred  
Hart Eileenmere Lady 4105  
17991364 Hart Eileenmere Lady 0203

Sitz Dash 10277 #  
Barstow Queen W16  
CAR Efficient 534 #  
Barstow Miss Dianna X128 #  
G A R Predestined #  
Rita 5F56 of 1198 FD  
H A R B Windy 702 JH #  
Hart Eileenmere Lady 4371



PRODUCTION EPDs				MATERNAL EPDs			\$ VALUES					
CED	BW	WW	YW	HP	CEM	Milk	\$W	\$F	\$G	\$B		
+6	+1.5	+70	+139	+12.4	+10	+33	+70.69	+117.73	+26.03	+172.74		
<b>CARCASS</b>	<b>CW</b>	<b>+72</b>	<b>.40</b>	<b>MARB</b>	<b>+44</b>	<b>.35</b>	<b>REA</b>	<b>+53</b>	<b>.35</b>	<b>FAT</b>	<b>+001</b>	<b>.32</b>



**HART EILEENMERE LADY 7204 • LOT 90**



**HART 2100 6049**

\$6500 Maternal brother to Lot 90  
selected by Ronald Thoreson, ND

- Dam's Production: BR 2@98, NR 2@109, YR 1@104.
- Her maternal brother is now working in the Ronald Thoreson herd at Fingal ND.
- She ranks in the top 4% for WW EPD and \$W and the top 2% for YW EPD and \$B value among non-parent cows in the breed.



## Elite Heifer Offering



**HART MISS ERICA 7203 • LOT 91**



**HART COWBOY UP 3350**

\$8,000 maternal brother to Lot 91  
selected by Reuer Farm, SD

- Dam's Production: BR 8@92, NR 8@104, YR 3@105.
- Her Pathfinder dam originally posted individual performance that featured a BWR 100, WWR 107, YWR 108 and RE ratio 113.
- Her maternal brothers include the \$8000 selection of Reuer Farm, Hoven SD in 2014, a \$6500 standout in the 2012 sale chosen by Richard Hastings, Britton SD and the \$4750 herd sire acquisition of Donald Lick, Rosholt SD in 2011.
- She ranks in the top 5% YW EPD, top 3% SW and top 2% \$B value.

### 91 Hart Miss Erica 7203

Reg: 18942364 Tattoo: 7203 BD: 02/09/17 Cow  
Act. BW 68 lbs Adj. WW 716 lbs WW Ratio 105

Basin Payweight 006S #  
Basin Payweight 1682  
17038724 21AR O Lass 7017

Hart Precision 5913 #  
Hart Miss Erica 8532 #  
16216049 Hart Miss Lead ON 5047 #

Vermilion Payweight J847 #  
Basin Lucy 3829  
HARB Pendleton 765 J H #  
21AR O Lass F24A  
C&M Sterling Precision  
Hart Pamela 2824  
Connealy Lead On #  
Hart Miss Fame 0311



PRODUCTION EPDs				MATERNAL EPDs			\$ VALUES					
CED	BW	WW	YW	HP	CEM	Milk	\$W	\$F	\$G	\$B		
+9	+1.8	+65	+120	+8.4	+9	+32	+71.15	+94.10	+35.64	+170.23		
CARCASS	CW	+59	.41	MARB	+57	.36	REA	+84	.36	FAT	+019	.33

### 92 Hart Miss Alice 7021

Reg: 18942221 Tattoo: 7021 BD: 01/25/17 Cow  
Act. BW 67 lbs Adj. WW 771 lbs WW Ratio 113

B/R Future Direction 4268  
WR Journey-1X74  
16924332 2 Bar 5050 New Design 7831

H A R B Icon 019  
Hart Miss Alice 5499  
18313061 Hart Miss Alice 2514

C A Future Direction 5321 #  
B/R Ruby 9114  
G A R New Design 5050 #  
2 Bar 036 Lady 0107  
S A V Final Answer 0035 #  
H A R B Belle Nellie 702-707  
ALC Destiny D82U  
Hart Miss Dataline 7023 #



PRODUCTION EPDs				MATERNAL EPDs			\$ VALUES					
CED	BW	WW	YW	HP	CEM	Milk	\$W	\$F	\$G	\$B		
+9	+1.7	+73	+127	+9.7	+12	+30	+78.69	+111.17	+33.79	+184.51		
CARCASS	CW	+63	.40	MARB	+74	.35	REA	+56	.35	FAT	+037	.32



**HART MISS ALICE 7021 • LOT 92**



**WR JOURNEY 1X74**

Sire of lot 92

- Dam's Production: BR 1@97, NR 1@113.
- She stems from a high-performance first-calf daughter of HARB Icon 019 that reported individual performance of WWR 111, YWR 110 and RE ratio 103.
- Her sire, WR Journey-1X74 has become an Angus phenomenon offering an unmatched combination of calving ease, accelerated performance, docility and end-product excellence. He ranks among the elite bulls of the breed for CED, BW, WW, YW, RADG, DMI, Doc, CW, Marb, RE, \$W, \$F, \$G and \$B.
- She ranks in the top 2% for both WW and YW EPDs and in the top 1% for both \$W and \$B value.

## Elite Heifer Offering



**HART SANORA 7206 • LOT 93**



**HART COMMANDO 6001**

\$5,000 maternal brother to Lot 93  
selected by Braun Farms, SD

- Dam's Production: BR 2@97, NR 2@106, YR 1@101.
- Her dam crushed her contemporaries with individual performance measures of WWR 117, YWR 121, IMF ratio 102 and RE ratio 108.
- Her maternal brother was the \$5000 selection of Braun Farms, Warner SD from the 2017 sale offering.
- She ranks in the top 2% for \$B value.

**93**

### Hart Sanora 7206

Reg: 18942245 Tattoo: 7206 BD: 02/10/17 Cow  
Act. BW 81 lbs Adj. WW 738 lbs WW Ratio 108

MCC Daybreak #  
Quaker Hill Ramage 0A36  
16925771 QHF Blackcap 6E2 of 4V16 4355

GW Beef Science 854  
Hart Sanora 4207  
17988317 Hart Sanora 7433 #

Boyd New Day 8005 #  
MCC Miss Focus 134 #  
Ideal 4355 of 0T26 2440  
QHF Blackcap 4V16 of 1H8  
Stevenson MoneyMaker R185 #  
Basin Blackcap 1605  
Berkos Dateline 7078 5010  
Hart Sanora 4055



PRODUCTION EPDs				MATERNAL EPDs			\$ VALUES				
CE	BW	WW	YW	HP	CEM	Milk	\$W	\$F	\$G	\$B	
+7	+1.7	+65	+121	+10.3	+11	+22	+58.30	+91.56	+36.79	+171.14	
CARCASS	CW	+62	.38	MARB	+58	.34	REA	+77	.34	FAT	-.001 .30

**94**

### Hart Misti Et 7572

Reg: + 18913875 Tattoo: 7572 BD: 03/02/17 Cow  
Act. BW 58 lbs Adj. WW 750 lbs WW Ratio 100

MCC Daybreak #  
Quaker Hill Ramage 0A36  
16925771 QHF Blackcap 6E2 of 4V16 4355

Mytty In Focus #  
Hart Misti 7017 #  
15942577 Hart Misti 5054

Boyd New Day 8005 #  
MCC Miss Focus 134 #  
Ideal 4355 of 0T26 2440  
QHF Blackcap 4V16 of 1H8  
S A F Focus of E R #  
Mytty Countess 906  
WAR Alliance 9126 6006 #  
Westwind Misti D J H 007



PRODUCTION EPDs				MATERNAL EPDs			\$ VALUES				
CE	BW	WW	YW	HP	CEM	Milk	\$W	\$F	\$G	\$B	
+11	+2.8	+88	+152	+11.9	+13	+18	+77.75	+139.87	+45.42	+187.26	
CARCASS	CW	+57	.40	MARB	+56	.37	REA	+1.05	.37	FAT	-.060 .33



**HART MISTI 7017**

Pathfinder dam of lot 94 and grandam of lot 95

- Dam's Production: BR 5@97, NR 5@110, YR 5@106.
- Flush sister to the yearling bulls that sell in this offering as lots 28, 29 and 30.
- Her Pathfinder, donor dam has been an outstanding producer. Her 2011 son, Hart Mountaineer 1176 was the \$27,000 high selling lot 1 bull of the 2012 Hart Sale and is now an Accelerated Genetics standout. Her 2009 son, Hart Battleship 9010 sold to ABS Global and topped the 2010 Sale at \$23,000.
- She ranks in the top 1% for both WW and YW EPDs as well as \$W and \$B val



**HART MISTI ET 7572 • LOT 94**

## Elite Heifer Offering



**HART MISTI 7082 • LOT 95**



**SILVEIRAS CONVERSION 3048**

Sire of lots 95, 96 and 97.

- Dam's Production: BR 1@96, NR 1@101.
- Her Pathfinder grandam is an accomplished Hart Angus Farms donor dam that produced the \$23,000 ABS sire, Hart Battleship; the \$27,000 Accelerated Genetics, Kelly Albrecht and Jeff Penz sire, Hart Mountaineer; ET sons in the 2014 sale that sold to Troy Weig and Jeff Forsting at \$10,500 and \$10,000; and an \$8000 son to Chris Langner in Iowa.

**95**

### Hart Misti 7082

Reg: 18940257 Tattoo: 7082 BD: 02/02/17 Cow  
Act. BW 66 lbs Adj. WW 690 lbs WW Ratio 101

Silveiras Conversion 8064  
Silveiras Conversion 3048  
17598819 Silveiras Elba 6036

V A R Reserve 1111  
Hart Misti Et 5429  
18317464 Hart Misti 7017 #

BT Crossover 758N #  
EXG Saras Dream S609 R3  
G A R Yield Grade #  
Silveiras Elba 4312  
B/R New Day 454 #  
Sandpoint Blackbird 8809  
Mytty In Focus #  
Hart Misti 5054



PRODUCTION EPDs				MATERNAL EPDs			\$ VALUES					
CED	BW	WW	YW	HP	CEM	Milk	\$W	\$F	\$G	\$B		
+8	+1.9	+75	+131	+8.6	+10	+21	+71.43	+107.65	+43.90	+182.21		
CARCASS	CW	+60	.40	MARB	+59	.36	REA	+94	.36	FAT	-.047	.32

**96**

### Hart Whitney 7151

Reg: 18940273 Tattoo: 7151 BD: 02/07/17 Cow  
Act. BW 80 lbs Adj. WW 680 lbs WW Ratio 100

Silveiras Conversion 8064  
Silveiras Conversion 3048  
17598819 Silveiras Elba 6036

Connealy Cavalry 1149  
Hart Whitney 3206  
17672303 Hart Whitney 0244 #

BT Crossover 758N #  
EXG Saras Dream S609 R3  
G A R Yield Grade #  
Silveiras Elba 4312  
Connealy Consensus #  
Brista of Conanga 927T  
Hoover Dam #  
Westwind Whitney J L H 957



PRODUCTION EPDs				MATERNAL EPDs			\$ VALUES					
CED	BW	WW	YW	HP	CEM	Milk	\$W	\$F	\$G	\$B		
+3	+2.6	+76	+124	+11.1	+5	+21	+70.40	+86.16	+52.27	+171.84		
CARCASS	CW	+54	.39	MARB	+1.25	.34	REA	+69	.34	FAT	+0.014	.30



### HART WHITNEY 7151

LOT 96

- Dam's Production: BR 3@96, NR 3@101, YR 2@102.
- Her dam recorded individual performance that bested her contemporaries with a BWR 96, WWR 107, YWR 104, IMF ratio 128, RE ratio 120 and Rib Fat ratio 91.
- Her two maternal sisters have been retained in the herd. The eldest weaned her first calf posting a NR 1@106.
- This representative of the revered Whitney cow family ranks in the top 4% or better for WW and YW EPDs as well as \$W and \$B.

## Elite Heifer Offering



**HART BLACKCAP LADY 7161 • LOT 97**



**HART OPEN RANGE 6127**

\$7000 Maternal brother to Lot 97  
selected by William Zavoral, MN

- Dam's Production: NR 7@102, YR 4@104.
- Her dam recorded individual performance of WWR 114, YWR 103, IMF ratio 108, RE ratio 122 and was systematically placed in the Hart Angus Farms breeding program.
- Maternal brothers include the herd sire selections of William Zavoral, Grygla MN; Ed Kaehler, Eyota MN and Cory Cole Langford SD.
- She ranks in the top 2% for \$B value among non-parent cows.

**97**

### Hart Blackcap Lady 7161

Reg: 18940276 Tattoo: 7161 BD: 02/07/17 Cow  
Act. BW 88 lbs Adj. WW 740 lbs WW Ratio 108

Silveiras Conversion 8064  
Silveiras Conversion 3048  
**17598819** Silveiras Elba 6036

S A V Bismarck 5682 #  
Hart Blackcap 9082  
**16548161** Summitcrest Blackcap 041J

BT Crossover 758N #  
EXG Saras Dream S609 R3  
G A R Yield Grade #  
Silveiras Elba 4312  
G A R Grid Maker #  
S A V Abigale 0451  
Gardens Prime Time #  
Summitcrest Blackcap 178G



PRODUCTION EPDs				MATERNAL EPDs			\$ VALUES					
CED	BW	WW	YW	HP	CEM	Milk	\$W	\$F	\$G	\$B		
-6	+5.1	+66	+117	+9.9	+4	+25	+49.86	+86.17	+39.89	+175.82		
<b>CARCASS</b>	<b>CW</b>	<b>+62</b>	<b>.39</b>	<b>MARB</b>	<b>+56</b>	<b>.34</b>	<b>REA</b>	<b>+88</b>	<b>.34</b>	<b>FAT</b>	<b>+.025</b>	<b>.30</b>

**98**

### Queen of Harts 7090

Reg: 18940635 Tattoo: 7090 BD: 02/02/17 Cow  
Act. BW 85 lbs Adj. WW 742 lbs WW Ratio 109

Connealy Reflection #  
Jindra Double Vision  
**16748826** Hoff Rachel 8312 405

Sitz Upward 307R #  
Queen of Harts 1145  
**17099979** Hart Miss Right Time 4091

Bon View New Design 878 #  
Happy Grill of Conanga 6260  
Hoff Limited Edition S C 594 #  
Hoff Miss Expo S C 4223  
Connealy Onward #  
Sitz Henrietta Pride 81M  
Pine Creek Right Time 1147 #  
Hart Traveler H075 0176



PRODUCTION EPDs				MATERNAL EPDs			\$ VALUES					
CED	BW	WW	YW	HP	CEM	Milk	\$W	\$F	\$G	\$B		
+1	+3.0	+63	+112	+10.9	+5	+24	+56.49	+79.78	+36.04	+171.15		
<b>CARCASS</b>	<b>CW</b>	<b>+62</b>	<b>.42</b>	<b>MARB</b>	<b>+77</b>	<b>.38</b>	<b>REA</b>	<b>+38</b>	<b>.37</b>	<b>FAT</b>	<b>+.008</b>	<b>.34</b>



**QUEEN OF HARTS 7090 • LOT 98**



**HART PIONEER 4281**

\$7,500 maternal brother to Lot 98  
selected by William Grismer, Hosmer, SD

- Dam's Production: NR 4@111, YR 3@110.
- Dam posted individual performance of WWR 113 and YWR 104 and was systematically inducted into the Hart Angus Farms breeding program. She produced bulls that sold to William Grismer, Hosmer SD at \$7500 in the '15 sale; Mike Frohling, Aberdeen, SD at \$4000 in 2017; and Greg Heyne of Hosmer, SD for \$6000 in '14 sale.
- She ranks in the top 2% for \$B value among non-parent cows.

# HART ANGUS FARMS

## GENOMIC RANKINGS

Lot	Genomic Type	CED%	BW%	WW%	YW%	DMI%	YH%	SC%	DOC%	HP%	CEM%	MILK%	MW%	MH%	CW%	MARB%	RE%	FAT%	TEND%
1	Angus GS	6	7	29	1	81	48	48	21	1	11	56	25	19	9	21	36	20	80
2	Angus GS	80	51	54	13	71	66	86	15	1	62	63	3	12	42	28	90	50	5
3	Angus GS	55	31	29	13	56	81	8	39	14	99	17	94	73	21	83	7	37	20
4	Angus GS	36	8	3	4	83	74	44	4	1	75	98	18	23	5	75	33	34	41
5	Angus GS	36	42	46	37	25	26	61	38	1	54	84	23	12	57	34	55	57	38
6	Angus GS	39	20	9	15	72	11	58	21	41	78	73	28	32	5	58	24	3	17
7	Angus GS	74	91	1	1	100	35	7	94	25	10	73	70	23	1	73	25	64	81
8	Angus GS	91	94	1	1	97	16	40	59	11	1	79	55	9	1	75	14	74	74
9	Angus GS	18	24	47	28	86	76	50	55	35	1	33	24	5	32	6	54	84	49
10	Angus GS	49	36	6	19	55	97	64	60	41	4	39	44	23	3	3	36	97	51
11	Angus GS	89	89	1	1	95	21	4	35	31	56	68	8	4	1	72	33	44	30
12	i50K	85	73	2	32	86	82	54	40	39	12	76	41	25	6	67	28	81	30
13	Angus GS	56	53	8	1	90	73	72	2	46	6	34	44	34	2	39	55	99	59
14	i50K	88	71	59	84	61	82	15	80	12	47	53	70	14	31	49	64	75	22
15	i50K	44	15	44	22	86	87	18	56	21	52	4	93	69	11	51	56	96	47
16	Angus GS	57	40	90	54	38	72	60	40	42	36	73	52	34	79	24	66	65	80
17	Angus GS	82	64	10	24	78	51	33	49	16	29	68	43	11	6	38	86	78	96
18	Angus GS	26	23	2	11	69	7	80	26	11	3	74	8	7	2	32	51	72	37
19	Angus GS	41	31	29	8	92	15	37	34	62	9	38	31	36	7	42	83	94	32
20	Angus GS	61	42	25	32	64	61	24	39	35	15	60	33	17	44	14	77	52	23
21	Angus GS	73	81	8	5	96	36	25	8	30	23	63	38	13	11	29	61	46	15
22	Angus GS	64	73	8	8	85	13	57	53	61	13	30	2	1	1	34	7	58	57
23	Angus GS	4	3	76	44	41	80	14	42	61	57	47	87	52	63	36	80	76	42
24	Angus GS	9	56	1	9	90	9	7	75	13	14	82	24	41	2	38	4	28	91
25	Angus GS	42	70	1	7	82	18	32	51	32	6	71	36	72	6	44	11	8	85
26	Angus GS	17	37	44	45	58	26	46	83	11	14	78	59	63	46	77	40	37	56
27	Angus GS	7	8	18	47	70	66	47	95	39	6	89	60	76	65	56	34	66	83
28	i50K	8	20	28	13	61	22	10	35	24	13	43	13	27	23	48	8	8	65
29	i50K	47	61	9	48	90	9	21	93	54	49	60	7	22	11	53	7	28	54
30	i50K	50	67	1	1	87	25	7	46	10	51	62	15	39	10	32	14	53	79
31	Angus GS	28	26	9	10	44	5	57	40	1	20	75	18	14	9	39	34	47	98
32	Angus GS	75	49	5	6	39	15	21	5	4	34	32	37	14	9	62	27	2	78
33	i50K	36	58	6	4	76	40	12	55	5	46	58	34	12	12	19	7	17	54
34	i50K	33	23	46	19	42	84	38	42	59	22	12	41	35	44	29	20	13	86
35	Angus GS	15	19	25	16	72	24	56	12	16	11	79	72	87	26	79	61	45	44
36	Angus GS	58	50	11	22	47	6	7	68	36	65	54	26	25	13	64	13	2	29
37	Angus GS	96	99	8	48	25	2	40	57	29	18	74	17	16	14	56	23	6	87
38	Angus GS	41	68	49	54	76	39	80	61	40	8	29	24	24	59	16	85	89	50
39	Angus GS	62	80	19	15	14	6	31	75	51	50	53	6	2	6	72	10	26	27
40	Angus GS	70	13	12	12	98	67	65	53	67	48	88	45	58	12	32	23	42	69
41	Angus GS	53	71	32	12	88	45	42	71	65	12	31	62	50	27	45	39	66	18
42	Angus GS	15	14	47	22	72	93	93	55	19	68	14	83	88	31	3	14	71	94
43	Angus GS	57	65	10	17	100	46	60	28	27	87	20	77	56	3	38	5	54	84
44	Angus GS	82	97	1	2	100	24	48	8	26	52	38	68	57	1	40	2	14	64
45	Angus GS	36	71	4	7	98	53	57	65	28	44	60	56	33	2	75	10	42	75
46	Angus GS	18	10	62	48	69	63	48	22	51	48	32	51	82	60	35	6	17	78
47	Angus GS	75	75	30	17	62	21	44	29	19	78	32	82	64	28	66	36	65	33
48	Angus GS	44	88	32	25	40	2	4	12	41	72	37	39	20	32	71	55	14	41
49	Angus GS	89	90	20	3	45	22	10	53	28	44	96	14	23	7	53	21	22	2
50	Angus GS	50	60	72	15	47	55	62	37	20	37	71	71	20	65	30	73	37	24

# HART ANGUS FARMS

## GENOMIC RANKINGS

Lot	Genomic Type	CED%	BW%	WW%	YW%	DMI%	YH%	SC%	DOC%	HP%	CEM%	MILK%	MW%	MH%	CW%	MARB%	RE%	FAT%	TEND%
51	Angus GS	54	47	85	17	72	45	44	53	21	10	85	63	37	79	84	31	29	70
52	i50K	59	68	4	9	88	61	16	18	6	16	35	18	19	8	64	7	24	78
53	i50K	50	54	41	66	96	52	71	46	11	4	13	19	12	31	74	23	34	89
54	i50K	34	21	7	9	79	73	25	21	32	83	10	25	41	6	53	33	49	94
55	i50K	40	71	19	45	84	89	37	24	13	12	6	31	28	32	75	11	13	85
56	Angus GS	52	55	3	1	90	13	5	3	67	44	50	27	46	2	53	27	83	55
57	Angus GS	80	41	66	11	22	47	6	58	59	67	87	10	16	38	42	54	39	74
58	Angus GS	75	84	14	5	86	3	7	3	48	82	61	3	7	11	93	63	61	41
59	Angus GS	48	60	20	29	31	27	62	32	34	76	24	61	77	34	84	37	71	65
60	Angus GS	15	21	5	13	83	41	27	49	86	9	36	13	19	17	33	39	31	82
61	Angus GS	12	16	4	4	84	13	29	86	91	56	13	38	12	4	31	5	2	94
62	Angus GS	21	44	12	2	81	18	63	44	70	58	17	30	22	26	52	87	47	43
63	Angus GS	48	77	8	20	72	36	96	69	73	12	45	63	86	35	50	50	44	3
64	Angus GS	28	40	12	14	80	88	87	65	46	5	41	28	46	14	17	26	35	8
65	Angus GS	39	19	14	13	71	38	96	95	58	10	76	9	9	33	27	24	76	13
66	Angus GS	26	33	37	47	21	71	78	72	38	17	58	77	78	26	22	56	93	7
67	Angus GS	25	37	44	53	73	76	81	18	64	41	31	47	52	67	55	19	47	7
68	Angus GS	15	35	6	3	82	12	47	79	61	39	28	42	38	16	23	45	76	2
69	Angus GS	1	2	8	28	89	59	90	41	79	52	75	11	22	26	13	10	52	22
70	Angus GS	74	79	4	7	86	22	77	100	82	58	3	7	19	2	54	14	20	40
71	Angus GS	46	68	40	47	28	40	90	64	84	79	41	14	67	34	83	26	59	98
72	Angus GS	18	11	51	86	19	50	96	88	5	23	54	6	12	74	39	42	52	94
73	Angus GS	37	43	9	4	42	29	51	41	10	66	5	2	27	15	60	13	14	76
74	i50K	9	20	9	6	78	91	18	42	2	48	38	90	92	45	6	10	92	38
75	i50K	43	39	39	32	52	30	47	10	9	23	41	21	27	34	41	21	18	52
76	Angus GS	91	80	17	54	49	40	29	75	34	30	36	15	24	14	85	64	31	93
77	i50K	75	67	51	8	89	52	46	96	21	14	73	52	77	37	60	31	49	23
78	Angus GS	27	20	17	6	61	27	28	30	30	4	73	76	68	18	72	22	43	51
79	Angus GS	69	55	9	15	99	59	85	58	7	96	34	32	60	30	65	33	13	45
80	Angus GS	43	11	30	23	18	9	14	64	39	38	20	13	6	42	85	72	65	85
81	Angus GS	33	5	64	64	49	96	77	46	58	36	14	93	90	83	95	76	75	8
82	Angus GS	66	45	44	14	71	35	6	19	12	17	20	68	59	47	91	10	19	15
83	i50K	66	49	44	58	65	96	55	33	53	95	9	32	28	24	7	11	28	20
84	i50K	91	78	57	49	51	61	12	47	37	98	21	62	42	49	8	55	70	8
85	i50K	82	43	24	12	77	64	1	27	42	99	25	24	54	19	12	50	29	3
86	Angus GS	32	44	17	5	62	51	61	14	49	3	8	54	34	4	60	32	20	16
87	Angus GS	82	78	57	29	68	19	95	59	55	4	16	41	21	22	33	61	39	79
88	i50K	70	39	46	68	63	78	30	87	32	24	67	78	57	69	42	86	63	84
89	Angus GS	52	70	9	4	62	22	18	18	3	62	25	26	47	2	92	5	36	42
90	Angus GS	66	74	12	5	76	24	44	4	5	34	33	34	22	2	62	52	49	67
91	Angus GS	60	65	16	18	56	43	4	36	64	34	19	19	17	5	26	26	86	38
92	Angus GS	72	71	6	18	6	9	65	14	58	41	28	60	10	10	39	60	80	29
93	Angus GS	53	61	11	9	84	25	60	69	22	17	82	65	65	10	36	22	41	40
94	i50K	33	79	5	1	72	19	8	85	38	17	41	8	36	4	51	4	1	51
95	Angus GS	45	41	5	25	44	51	63	46	8	52	77	31	68	9	37	4	3	90
96	Angus GS	92	96	8	31	25	3	80	28	58	57	84	2	1	18	4	22	22	46

♥ Our "Sweet-Harts" ♥



# HART

*angus farms*

**BRAD HART & FAMILY**  
**ALEX HART & FAMILY**

38735 108th St, Frederick, SD 57441  
Home Phone : 605-329-2645  
Brad Cell: 605-329-7211  
brad@hartangusfarms.com  
Alex Cell: 605-216-1019  
alex@hartangusfarms.com  
www.hartangusfarms.com

# 43<sup>rd</sup> Annual HART *angus farms* Production Sale

Sale offering may be viewed any time prior to the sale and will be penned on sale day weekend and sale day

53 Years in the Angus breed

