

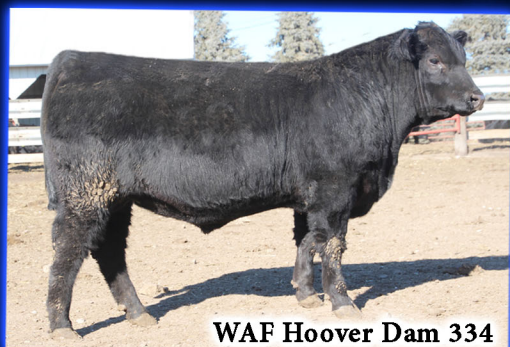
# WEEKS

*Angus Farm*



WAF Right Answer 330

**\$6100 Maternal Brother to Lot 11**



WAF Hoover Dam 334

**\$6000 Maternal Brother to Lot 7**



WAF Irish 530

**\$4800 Maternal Brother to Lot 24**

## PRODUCTION SALE



WAF Irish 411

**\$4750 Maternal Brother to Lot 10**



WAF Evening Tinge W728

**\$2500 Maternal Sister to Lot 42**

*Saturday - 1:00 PM*  
**MARCH 2  
2019**

Madison County Livestock Auction  
*Winterset, IOWA*

# WEEKS *Angus Farm*

## PRODUCTION SALE

### SELLING 50 LOTS

30 Yearling Bulls  
20 Yearling Heifers

#### SALE DAY PHONES

**Sale Barn: 515-462-2838**

**Dale Weeks 515-250-8854  
CAS Cell Phones**

**DAVE SWEENEY 641-373-4340**

#### AMERICAN ANGUS ASSOCIATION

Regional Manager.....Adam Conover, 816-676-8560

#### LIVESTOCK PRESS REPRESENTATIVES

Livestock Plus .....Mike Sorensen, 641-745-7949

Midwest Marketer.....Chad Clausson, 563-349-5089

#### IOWA ANGUS ASSOCIATION

President.....Cody Jensen

Vice President.....Ed Wiederstein

Secretary.....Colby & Tricia Holmes

AUCTIONEER: PETE MYERS 641-202-0108

# WEEKS *Angus Farm*

## Dale & Vikki Weeks

2823 Grandview Lane - Winterset, IA 50273  
515-462-4661 (home) - 515-250-8854 (cell)

Saturday - 1:00 PM

# MARCH 2 2019

Madison County Livestock Auction  
Winterset, IOWA

#### GENERAL INFORMATION

**SALE LOCATION:** Madison County Livestock Auction, Winterset, IA. 1204 West Summit St., Winterset, IA. Located S.W. corner of Winterset on Hwy 92.

**MOTEL HEADQUARTERS:** Super 8 Motel, 1312 N. 10th Street, Winterset, IA. Phone: 515-462-4888.

**TRANSPORTATION:** Major airlines serve the Des Moines International Airport.

**INSPECTION OF CATTLE:** All cattle will be available for inspection anytime on the farm and on March 2nd at the sale site.

**HEALTH:** Interstate health papers furnished on all cattle selling. **TERMS:** Cash. Please settle for cattle promptly.

**TERMS & CONDITIONS:** All cattle sell according to the standard terms and conditions of the American Angus Association.

**TRUCKING:** We will be glad to assist in making the best possible trucking arrangements.

**INSURANCE:** Will be available through Conover Auction Service, an American Livestock agent.

**LIABILITY:** All persons attending this sale do so at their own risk, legal or otherwise, for their safety or the behavior of the animals. The Owners, Auction Service, Sale Staff and hosts assume no liability for property loss or any accidents that may occur Sale Day.

**ANNOUNCEMENTS:** From the block will take precedence over the catalog. Buyers unable to attend may send their bids to the Auction Service, Field Representatives or Auctioneers.

**LUNCH:** Complimentary Lunch Available Sale Day.

**Please Bring This Catalog  
With You Sale Day!**

Sale Managed By:  
**Conover**   
*Auction Service*

P.O. Box 9 - Baxter, IA 50028

**AL & JEANNE CONOVER**

641-227-3537 - 641-227-3792 (FAX)

DAVE SWEENEY - 641-373-4340

www.conoverauction.com

conover@conoverauction.com

# WEEKS Angus Farm

**Dale & Vikki Weeks**  
2823 Grandview Lane - Winterset, IA 50273  
515-462-4661 (home) - 515-250-8854 (cell)

Dear Cattlemen,

On behalf of my wife Vikki and myself, I would like to invite you to our 23rd annual production sale. The sale will be at the Madison County Livestock Auction in Winterset, Iowa Saturday March 2nd at 1 P.M.

With all the options that you as cattlemen have as sources of seedstock, we truly do appreciate your interest in our herd and taking time to come to our farm and to our sale to evaluate our cattle.

I'm going to take a minute to talk about docility. What is the point of having an awesome bull if he's going to tear up fences or try to hurt somebody. It's been said, you can take a calm cow and use a buzzer on her everytime she's in the chute, and pretty soon everytime she's around people she gets nervous. You can also take a cow that tends to be nervous, handle her right, and she will become more relaxed to the point that you can work her easier.

We give our cows a couple of ears of corn when we put them in the calving barn, a treat being a little grain or a square bale of really nice hay whenever we gather or move the cows and it really makes them easier to work with.

Docility, I think, helps with a lot of other things. Getting calves to come to the bunk (increasing rate of gain), conception rates in AI program (increasing % AI bred), carcass quality (nervous cattle are more likely to have a dark cutter and or less tender meat. Last but not least, it's easier to get the neighbors to help work your cattle if the cattle are quiet. Cows seem to remember a bad experience; handling them right really pays.

We are again offering to take the bulls back home and care for and feed them until you are ready to take delivery at a cost of \$3 per head per day. The bulls we board will be semen tested at a later date at our expense. All the bulls are guaranteed to pass a breeding soundness examination.

The cattle are to be moved to the Madison County Auction on the morning of the sale. The cattle can be inspected prior to the sale day at the farm. If you have any questions, please give me a call. I look forward to the visit.

P.S. - Please join us before the sale for a complimentary lunch!

Sincerely,  
Dale Weeks

## Sale Managed By:



**AL & JEANNE CONOVER**  
641-227-3537 ♦ Fax: 641-227-3792  
Email: conover@conoverauction.com  
www.conoverauction.com  
**DAVE SWEENEY 641-373-4340**

Dear Cattlemen,

*You have been rewarded each year at Madison Co Livestock Auction or anywhere in the country for your top-quality calves of any breed or color. But let's be honest, the top sellers were generally black calves sired by top quality Angus bulls from reputation sources. Dale Weeks is a leading breeder of the genetic material you need to get you at the top of the auction market or reaping the rewards of grid pricing premiums on the rail.*

*Dale and his family have done an admirable job of building and maintaining a cow herd anchored in the fundamentals of good production, performance, carcass quality and maternal value. His AI sires are highly acclaimed bulls that bend the growth curve while remaining strong in functional soundness traits. His well-thought herdsire acquisitions do the same. The sons and daughters of his most recent herd sire acquisition, PA Commando 684 have demonstrated on the scales and on paper that they are perhaps his top sire group.*

*Dale has used all of the tools to define the high quality of this offering. Each bull has been scrutinized with growth, ultrasound and fertility measures and offered in a timely fashion in this sale book for your consideration and appraisal.*

*We look forward to greeting you on March 8th in Winterset IA. We welcome your pre-sale inquiries at our office or you can contact Dale Weeks directly.*

*Al and Jeanne Conover  
Dave Sweeney*



Al Conover



Jeanne Conover



Dave Sweeney

# Sons of Baldrige Colonel C251



**Baldrige Colonel C251**

REF SIRE

## A Baldrige Colonel C251

Born: 04/23/15    +\*18493773    Tattoo: C251    Bull

Hoover Dam #\*  
**baldrige Xpand x743 +**  
**16762739** Baldrige Queen S87

Styles Upgrade J59 #\*  
**Baldrige Isabel Y69 \***  
**17149410** Baldrige Isabel T935 +

SydGen C C & 7 #\*  
 Erica of Ellston C124 #  
 Baldrige Navigator N5 #  
 Baldrige Queen N914 +  
 Sitz Upward 307R #  
 Plainview Lassie 71B  
 Baldrige Kaboom K243 KCF #  
 Baldrige Isabel P4527 +



PRODUCTION EPDs				MATERNAL EPDs			\$ VALUES					
CED	BW	WW	YW	CEM	Milk	\$EN	\$W	\$F	\$G	\$B		
+3	+1.6	+62	+114	+9	+19	-5.54	+52.57	+68.48	+50.05	+144.96		
<b>CARCASS</b>	<b>CW</b>	+45	.50	<b>MARB</b>	+73	.44	<b>REA</b>	+1.03	.45	<b>FAT</b>	-0.43	.44

- Baldrige Colonel C251 is a maternal brother to the "great eight" bulls that headlined the 2016 Baldrige Sale including Select Sires' \$157,000 Baldrige Bronc, Accelerated's \$35,000 Baldrige Compass C041, and Hoover Angus' \$100,000 Baldrige 38 Special. Colonel is a moderate BW bull with tremendous carcass EPDs. The Angus fraternity is abuzz about this son of Baldrige Isabel Y69 that topped the 2017 Baldrige Sale at \$580,000.

## LOT 1 WAF Colonel 803

Born: 01/28/18    19230391    Tattoo: 803    Bull

baldrige Xpand x743 +  
**Baldrige Colonel C251 +\***  
**18493773** Baldrige Isabel Y69 \*

TC One Way 8159  
**W A F Blueblood Lady W104**  
**17143743** W A F Blueblood Lady W043

Hoover Dam #\*  
 Baldrige Queen S87  
 Styles Upgrade J59 #\*  
 Baldrige Isabel T935 +  
 TC One Way 618 #+  
 TC Marcia 9069 #  
 Twin Valley Precision E161 #\*  
 Blueblood Lady Ellston N10

PRODUCTION EPDs				MATERNAL EPDs			\$ VALUES					
CED	BW	WW	YW	CEM	Milk	\$EN	\$W	\$F	\$G	\$B		
+0	+3.7	+52	+103	+9	+22	-12.70	+29.87	+68.64	+36.13	+140.35		
<b>CARCASS</b>	<b>CW</b>	+44	.22	<b>MARB</b>	+48	.17	<b>REA</b>	+54	.22	<b>FAT</b>	-0.20	.18

- Individual Performance: BW 96, 205 Wt 721, WWR 102, 365 Wt 1299, YWR 109. Yearling Scrotal Measurement 36.2 cm.
- Dam's Production: BR 6@97, NR 6@97, YR 1@109. Calving Interval 6@364 days.
- Adjusted Ultrasound Scan Data: %IMF 2.10, REA 10.8, Rib Fat .21, Ratio 84, Rump Fat .22, Ratio 85.
- His maternal sister was the second high-selling heifer in 2017, chosen by Nick Benshoof, Winterset IA.
- His dam produced four consecutive daughters 2013 to 2016, including herd replacements selected by Dennis Faust, Dexter IA; Matt Thompson, Orient IA and Nelson and Mariann Thornton, Winterset IA.
- He stems from a cow family pioneered in the Hoover Angus herd.
- He recorded the #3 heaviest adj yearling wt in the offering.

## LOT 2 WAF Colonel 809

Born: 02/15/18    19230448    Tattoo: 809    Bull

baldrige Xpand x743 +  
**Baldrige Colonel C251 +\***  
**18493773** Baldrige Isabel Y69 \*

TC Broadside 150 #\*  
**W A F Blueblood Lady W306**  
**17696306** W A F Blueblood Lady W004 #

Hoover Dam #\*  
 Baldrige Queen S87  
 Styles Upgrade J59 #\*  
 Baldrige Isabel T935 +  
 M A Broadside 1334-822 #  
 TC Marcia 1069 #  
 Mytty In Focus #\*  
 W A F Blueblood Lady W043

PRODUCTION EPDs				MATERNAL EPDs			\$ VALUES					
CED	BW	WW	YW	CEM	Milk	\$EN	\$W	\$F	\$G	\$B		
-2	+4.3	+60	+108	+6	+25	-18.93	+40.74	+72.24	+42.27	+157.33		
<b>CARCASS</b>	<b>CW</b>	+50	.22	<b>MARB</b>	+61	.18	<b>REA</b>	+73	.22	<b>FAT</b>	-0.25	.19

- Individual Performance: BW 100, 205 Wt 752, WWR 107, 365 Wt 1277, YWR 107. Yearling Scrotal Measurement 36.8 cm.
- Dam's Production: NR 4@108, YR 3@105, IMF 3@114, Rib Fat 2@86, Rump Fat 3@77. Calving Interval 4@353 days.
- Adjusted Ultrasound Scan Data: %IMF 3.29, Ratio 131, REA 12.5, Rib Fat .22, Ratio 88, Rump Fat .20, Ratio 77.
- This performance and carcass trait standout recorded the #5 heaviest adj yearling wt and the #1 highest IMF measurement. In addition, he posts the #3 highest YW EPD, shares the #3 highest RE EPD and has the #1 highest \$Beef value in the sale offering.
- His maternal brother was the #1 adj weaning wt, #1 \$W and #1 \$B bull of the 2018 offering, selling to Brad Willy, Lorimor IA at \$4700.

## LOT 3 WAF Colonel 805

Born: 01/27/18    19230396    Tattoo: 805    Bull

baldrige Xpand x743 +  
**Baldrige Colonel C251 +\***  
**18493773** Baldrige Isabel Y69 \*

TC Aberdeen 759 #  
**W A F Blackcap Bessie W111**  
**17143763** Weeks Blackcap Bessie W708

Hoover Dam #\*  
 Baldrige Queen S87  
 Styles Upgrade J59 #\*  
 Baldrige Isabel T935 +  
 C R A Bextor 872 5205 608 #  
 TC Blackbird 4034 #+  
 Larks Canyon 74D4 #  
 W A F Blackcap Bessie W257

PRODUCTION EPDs				MATERNAL EPDs			\$ VALUES					
CED	BW	WW	YW	CEM	Milk	\$EN	\$W	\$F	\$G	\$B		
+2	+2.7	+56	+99	+9	+21	-7.82	+42.05	+58.22	+38.19	+140.42		
<b>CARCASS</b>	<b>CW</b>	+44	.23	<b>MARB</b>	+57	.19	<b>REA</b>	+57	.24	<b>FAT</b>	+0.02	.20

- Individual Performance: BW 95, 205 Wt 773, WWR 110, 365 Wt 1235, YWR 104. Yearling Scrotal Measurement 33.6 cm.
- Dam's Production: BR 6@98, NR 6@102, YR 4@99, IMF 4@101, Rib Fat 4@95. Calving Interval 6@359 days.
- Adjusted Ultrasound Scan Data: %IMF 2.80, Ratio 111, REA 11.3, Rib Fat .23, Ratio 92, Rump Fat .23, Ratio 88.
- This Colonel son was a performance standout that recorded the #4 heaviest adj weaning wt in the sale offering.
- His 2018 maternal sister was chosen by Rita Huntrods, Van Meter IA; a 2015 sister is retained, while maternal brothers were selected by Galen Trucks, Peru IA; David Lewis, Afton IA and Hill Top Stock Farms, Stuart IA.



**WAF Safeguard 711**  
 \$4700 maternal brother to Lot 2  
 Selected by Brad Wiley, IA

# Sons of Baldridge Colonel C251



**WAF Final Answer 406**

Maternal brother to Lot 4  
Selected by Duane Bush, IA



**WAF Magnus 638**

\$3300 maternal brother to Lot 6  
Selected by Jeff Kirk, IA

**LOT 4**

## WAF Colonel 801

Born: 02/17/18 19230389 Tattoo: 801 Bull

baldridge Xpand x743 +  
**Baldridge Colonel C251 +\***  
18493773 Baldridge Isabel Y69 \*

Hoover Dam #\*  
Baldridge Queen S87  
Styles Upgrade J59 #\*  
Baldridge Isabel T935 +  
BT Crossover 758N #+  
Rito Maid 0810  
Lemmon Newsline C804 #+  
W A F Queen Alice W254

DA ES RO Crossover 7202 910 +  
**W A F Queen Alice W014 #**  
16793534 Weeks Queen Alice W603

PRODUCTION EPDs				MATERNAL EPDs			\$ VALUES					
CED	BW	WW	YW	CEM	Milk	\$EN	\$W	\$F	\$G	\$B		
-3	+4.0	+50	+90	+3	+23	-7.45	+33.27	+45.90	+40.87	+119.20		
<b>CARCASS</b>	<b>CW</b>	<b>+33</b>	<b>.22</b>	<b>MARB</b>	<b>+51</b>	<b>.18</b>	<b>REA</b>	<b>+77</b>	<b>.22</b>	<b>FAT</b>	<b>-.025</b>	<b>.19</b>

- Individual Performance: BW 100, 205 Wt 717, WWR 102, 365 Wt 1189, YWR 100. Yearling Scrotal Measurement 38.3 cm.
- Dam's Production: NR 7@104, YR 4@101, REA 4@105. Calving Interval 7@366 days.
- Adjusted Ultrasound Scan Data: %IMF 2.61, Ratio 104, REA 13.0, Ratio 101, Rib Fat .23, Ratio 92, Rump Fat .21, Ratio 81.
- His maternal brother was a \$4100 feature in 2017 chosen by David Robinson, Winterset IA; Duane Bush, Winterset IA selected another in 2015, while Adam McFarland, Afton IA chose a brother in 2013. Angela Snyder, Winterset IA chose a maternal sister in 2018.
- He posted the #1 largest RE area in the sale offering.
- Pathfinder dam.

**LOT 5**

## WAF Colonel 807

Born: 02/05/18 19230407 Tattoo: 807 Bull

baldridge Xpand x743 +  
**Baldridge Colonel C251 +\***  
18493773 Baldridge Isabel Y69 \*

Hoover Dam #\*  
Baldridge Queen S87  
Styles Upgrade J59 #\*  
Baldridge Isabel T935 +  
C R A Bextor 872 5205 608 #  
TC Blackbird 4034 #+  
Lemmon Newsline C804 #+  
Weeks' Barmiss W153

TC Aberdeen 759 #  
**W A F Barmiss W218**  
17383375 Weeks Barmiss W704

PRODUCTION EPDs				MATERNAL EPDs			\$ VALUES					
CED	BW	WW	YW	CEM	Milk	\$EN	\$W	\$F	\$G	\$B		
+13	-2.8	+42	+75	+14	+21	+2.69	+41.09	+24.49	+48.06	+105.27		
<b>CARCASS</b>	<b>CW</b>	<b>+25</b>	<b>.23</b>	<b>MARB</b>	<b>+70</b>	<b>.19</b>	<b>REA</b>	<b>+74</b>	<b>.23</b>	<b>FAT</b>	<b>-.022</b>	<b>.20</b>

- Individual Performance: BW 62, BWR 73, 205 Wt 644, WWR 91, 365 Wt 1122, YWR 94. Yearling Scrotal Measurement 37.4 cm.
- Dam's Production: BR 5@89, NR 5@97, YR 3@96, IMF 3@124, REA 3@101, Rib Fat 3@97, Rump Fat 3@86. Calving Interval 5@365 days.
- Adjusted Ultrasound Scan Data: %IMF 2.89, Ratio 115, REA 13.2, Ratio 102, Rib Fat .21, Ratio 84, Rump Fat .22, Ratio 85.
- His maternal brother was the \$3800 selection of Cumings Family Farms, Prole IA in the 2018 sale, another brother was a \$4100 highlight at the 2015 Weeks Angus Sale selected by Alan Wildin, Winterset IA.
- A maternal sister is retained at Weeks Angus and another sold to K Land Angus Farm, Pierson IA through the 2016 sale.
- He shares the #3 highest CED, the #1 lowest BW and posts the #2 highest RE EPDs in the sale offering.
- Recommended for heifers or cows.

**LOT 6**

## WAF Colonel 834

Born: 02/11/18 19230489 Tattoo: 834 Bull

baldridge Xpand x743 +  
**Baldridge Colonel C251 +\***  
18493773 Baldridge Isabel Y69 \*

Hoover Dam #\*  
Baldridge Queen S87  
Styles Upgrade J59 #\*  
Baldridge Isabel T935 +  
B/R New Design 036 #  
Bon View Gammer 85  
B A Freedom 404  
Evening Tinge W312

Bon View New Design 878 #  
**Weeks Evening Tinge W906**  
16511658 Weeks Evening Tinge W609

PRODUCTION EPDs				MATERNAL EPDs			\$ VALUES					
CED	BW	WW	YW	CEM	Milk	\$EN	\$W	\$F	\$G	\$B		
+6	+0.7	+43	+73	+11	+25	-2.46	+41.79	+20.28	+36.36	+101.44		
<b>CARCASS</b>	<b>CW</b>	<b>+29</b>	<b>.23</b>	<b>MARB</b>	<b>+42</b>	<b>.19</b>	<b>REA</b>	<b>+67</b>	<b>.24</b>	<b>FAT</b>	<b>-.019</b>	<b>.20</b>

- Individual Performance: BW 84, BWR 99, 205 Wt 713, WWR 101, 365 Wt 1084, YWR 91. Yearling Scrotal Measurement 38.6 cm.
- Dam's Production: BR 7@100, NR 7@105, YR 5@103, REA 5@107, Rib Fat 5@92, Rump Fat 5@98. Calving Interval 7@365 days.
- Adjusted Ultrasound Scan Data: %IMF 1.89, REA 12.3, Rib Fat .18, Ratio 72, Rump Fat .20, Ratio 77.
- Maternal brothers have been featured in the 2017, 2016, 2015 and 2014 sales chosen by Jeff Kirk, Peru IA; Mark Munden, Lorimor IA; Norm & Ben Young, Truro IA and David Robinson, Winterset IA, at \$3300, \$3600, \$4300 and \$5300 respectively.
- His maternal sister sold in the 2018 sale to Charles and Linda Horton, Humeston IA while another is retained in the herd where she posts NR 4@106.



**Mohnen General 548**

\$90,000 paternal brother to Lots 1 - 6  
Sold in the 2019 Mohnen Angus Sale

# Sons of Connealy Black Granite



**WAF Hoover Dam 334**  
\$6000 maternal brother to Lot 7  
Selected by Oswald Ranch, IA

## LOT 8 WAF Black Granite 833

**Born: 01/28/18**      **19230488**      **Tattoo: 833**      **Bull**

Connealy Consensus 7229 #\*  
**Connealy Black Granite#\***  
**17028963** Eura Elga of Conanga 9109 #

Bon View New Design 878 #  
**Weeks Miss Blitz W813**  
**16144306** W A F Miss Blitz W044

Connealy Consensus #\*  
Blue Lilly of Conanga 16  
S A V Bismarck 5682 #+  
Eura Cal of Conanga 56B  
B/R New Design 036 #  
Bon View Gammer 85  
Stock Right W962  
Weeks Miss Blitz W063

PRODUCTION EPDs				MATERNAL EPDs			\$ VALUES					
CED	BW	WW	YW	CEM	Milk	\$EN	\$W	\$F	\$G	\$B		
I+7	I+2.0	I+48	I+82	I+10	I+27	+99	+54.69	+44.76	+29.11	+116.98		
<b>CARCASS</b>	<b>CW</b>	+33	.28	<b>MARB</b>	+37	.25	<b>REA</b>	+44	.28	<b>FAT</b>	+0.15	.24

- Individual Performance: BW 76, BWR 99, 205 Wt 775, WWR 110, 365 Wt 1257, YWR 105. Yearling Scrotal Measurement 37.3 cm.
- Dam's Production: NR 7@105, YR 2@105, IMF 3@101, REA 3@104, Rump Fat 2@95. Calving Interval 9@364 days.
- Adjusted Ultrasound Scan Data: %IMF 2.40, REA 13.1, Ratio 102, Rib Fat .29.
- Born twin with a cow.
- His maternal brothers were chosen by L3 Land & Livestock, Creston IA and Tyler Jackson, Van Wert IA. Matt Thompson, Orient IA chose a maternal sister in 2015 while four sisters in the herd include the dams of lots 31 and 50 in this offering.
- He recorded the #3 heaviest adj weaning wt in the sale offering.

## LOT 7 WAF Black Granite 835

**Born: 02/03/18**      **19230490**      **Tattoo: 835**      **Bull**

Connealy Consensus 7229 #\*  
**Connealy Black Granite#\***  
**17028963** Eura Elga of Conanga 9109 #

Mytty In Focus #\*  
**Weeks Oakleaf W911 #**  
**16511663** Weeks Oakleaf W712

Connealy Consensus #\*  
Blue Lilly of Conanga 16  
S A V Bismarck 5682 #+  
Eura Cal of Conanga 56B  
S A F Focus of E R #  
Mytty Countess 906  
Streams New Design 1407-3169  
W A F Oakleaf W047

PRODUCTION EPDs				MATERNAL EPDs			\$ VALUES					
CED	BW	WW	YW	CEM	Milk	\$EN	\$W	\$F	\$G	\$B		
+4	+3.2	+60	+106	+8	+26	-18.84	+47.01	+68.45	+35.36	+149.95		
<b>CARCASS</b>	<b>CW</b>	+50	.28	<b>MARB</b>	+52	.24	<b>REA</b>	+59	.28	<b>FAT</b>	+0.07	.25

- Individual Performance: BW 100, 205 Wt 783, WWR 111, 365 Wt 1317, YWR 110. Yearling Scrotal Measurement 41.4 cm.
- Dam's Production: NR 8@109, YR 3@110, IMF 3@110, REA 3@105. Calving Interval 8@363 days.
- Adjusted Ultrasound Scan Data: %IMF 2.87, Ratio 114, REA 14.0, Ratio 109, Rib Fat .25, Ratio 100, Rump Fat .29.
- His Pathfinder dam has maintained a calving interval of 8@363 days while producing a \$6000 herd sire for Oswald Ranch, Osceola IA and one for David Robinson, Winterset IA.
- His maternal sisters were selected by Fred Oehlerking, Earlham IA in 2018, Angela Snyder, Winterset IA in 2017 and Sadie Fredericks, Indianola IA from the 2015 sale offering.
- He recorded the #1 heaviest adj weaning wt, the #1 adj yearling wt and shares the #3 largest ribeye area in the sale offering.

## LOT 9 WAF Black Granite 815

**Born: 02/06/18**      **19230452**      **Tattoo: 815**      **Bull**

Connealy Consensus 7229 #\*  
**Connealy Black Granite#\***  
**17028963** Eura Elga of Conanga 9109 #

Mogck Bullseye #\*  
**WAF Eline W410**  
**17966961** W A F Eline 5100

Connealy Consensus #\*  
Blue Lilly of Conanga 16  
S A V Bismarck 5682 #+  
Eura Cal of Conanga 56B  
MOGCK Sure Shot #  
Mogck Mary 1255  
Stock Right W962  
Weeks Eline W080 #

PRODUCTION EPDs				MATERNAL EPDs			\$ VALUES					
CED	BW	WW	YW	CEM	Milk	\$EN	\$W	\$F	\$G	\$B		
I+5	I+2.7	I+57	I+99	I+9	I+28	-18.25	+49.26	+57.50	+32.71	+131.09		
<b>CARCASS</b>	<b>CW</b>	+42	.27	<b>MARB</b>	+38	.24	<b>REA</b>	+73	.27	<b>FAT</b>	-.008	.23

- Individual Performance: BW 70, BWR 92, 205 Wt 713, WWR 101, 365 Wt 1212, YWR 102. Yearling Scrotal Measurement 40.6 cm.
- Dam's Production: NR 2@104, YR 1@102, REA 2@103, Rib Fat 2@62, Rump Fat 2@76. Calving Interval 3@359 days.
- Adjusted Ultrasound Scan Data: %IMF 2.33, REA 13.8, Ratio 107, Rib Fat .16, Ratio 64, Rump Fat .22, Ratio 85.
- Born twin with a cow.
- His maternal sister was selected by K Land Angus farm, Pierson IA in 2017.
- Maternal grandsire, Mogck Bullseye, is the \$192,000 sensation best known for adding tremendous muscle and growth to his progeny. No high accuracy sire can meet or exceed Bullseye's combination of superior Docility, \$W, and \$B!
- He shares the #3 largest REA measurement in the sale offering.



**Connealy Black Granite**

## REF SIRE B Connealy Black Granite

**Born: 01/13/11**      # \* **17028963**      **Tattoo: 133**      **Bull**

Connealy Consensus #\*  
**Connealy Consensus 7229 #\***  
**16447771** Blue Lilly of Conanga 16

S A V Bismarck 5682 #+  
**Eura Elga of Conanga 9109 #**  
**16448837** Eura Cal of Conanga 56B

KMK Alliance 6595 187 #  
Blinda of Conanga 004  
Woodhill Admiral 77K #  
Blue Cash of Conanga 6020  
G A R Grid Maker #+  
S A V Abigale 0451  
Connealy Black Baron of SCAR +  
Elgina of Conanga 868 232

PRODUCTION EPDs				MATERNAL EPDs			\$ VALUES					
CED	BW	WW	YW	CEM	Milk	\$EN	\$W	\$F	\$G	\$B		
+15	+3	+58	+98	+14	+24	+13.36	+79.19	+63.20	+23.80	+131.36		
<b>CARCASS</b>	<b>CW</b>	+40	.75	<b>MARB</b>	+34	.73	<b>REA</b>	+70	.69	<b>FAT</b>	+0.17	.73

- Connealy Black Granite was an \$80,000 feature of the 2012 Connealy Spring Bull Sale and the favored son of Conensus in the offering. He currently boasts A CED in the top 3% and a \$W in the top 2% of proven sires. Black Granite sired the \$37,500 top-selling bred heifer at the 2018 National Western Foundation Female Sale. Sons are favored for their structural correctness and muscle mass.

# Sons of Connealy Black Granite

LOT  
10

## WAF Black Granite 804

Born: 01/30/18 19230394 Tattoo: 804 Bull

Connealy Consensus 7229 #\*  
**Connealy Black Granite#\***  
17028963 Eura Elga of Conanga 9109 #

TC One Way 8159  
**W A F Eline W109**  
17143755 Weeks Eline W611 #

Connealy Consensus #\*  
Blue Lilly of Conanga 16  
S A V Bismarck 5682 #+  
Eura Cal of Conanga 56B  
TC One Way 618 #+  
TC Marcia 9069 #  
Streams New Design 1407-3169  
W A F Eline W041

PRODUCTION EPDs				MATERNAL EPDs				\$ VALUES				
CED	BW	WW	YW	CEM	Milk	\$EN	\$W	\$F	\$G	\$B		
+8	+1.7	+49	+92	+11	+25	-11.19	+40.43	+50.28	+32.04	+121.42		
CARCASS	CW	+38	.27	MARB	+42	.23	REA	+51	.26	FAT	+0.08	.23

- Individual Performance: BW 88, 205 Wt 723, WWR 103, 365 Wt 1232, YWR 104. Yearling Scrotal Measurement 38.2 cm.
- Dam's Production: BR 6@100, NR 6@98, YR 2@107, IMF 2@104, REA 2@100, Rib Fat 2@100, Rump Fat 1@94. Calving Interval 6@364 days.
- Adjusted Ultrasound Scan Data: %IMF 2.58, Ratio 102, REA 12.9, Ratio 100, Rib Fat .26.
- His maternal brother recorded a BWR 96, WWR 106, YWR 109, IMF ratio 106 and was the \$4750 selection of Brad Wiley, Lorimor IA.
- His maternal sister in this herd records NR 2@102 on AHIR and is the dam of Lot 49 in this offering.



## WAF Irish 411

\$4750 maternal brother to Lot 10  
Selected by Brad Wiley, IA

## WAF Right Answer 330

\$6100 top-selling maternal brother to Lot 11 Selected by Clelland Looney Jr, IA



LOT  
11

## WAF Black Granite 832

Born: 01/30/18 19230487 Tattoo: 832 Bull

Connealy Consensus 7229 #\*  
**Connealy Black Granite#\***  
17028963 Eura Elga of Conanga 9109 #

Bon View New Design 878 #  
**Weeks Erica W810**  
16144300 Weeks Erica W389

Connealy Consensus #\*  
Blue Lilly of Conanga 16  
S A V Bismarck 5682 #+  
Eura Cal of Conanga 56B  
B/R New Design 036 #  
Bon View Gammer 85  
Stock Right W962  
B J Erica Distinction 9610 #

PRODUCTION EPDs				MATERNAL EPDs				\$ VALUES				
CED	BW	WW	YW	CEM	Milk	\$EN	\$W	\$F	\$G	\$B		
+11	+0.2	+46	+82	+11	+24	-4.68	+42.74	+34.21	+30.16	+97.65		
CARCASS	CW	+29	.28	MARB	+39	.24	REA	+44	.28	FAT	+0.20	.25

- Individual Performance: BW 80, BWR 95, 205 Wt 705, WWR 100, 365 Wt 1182, YWR 99. Yearling Scrotal Measurement 37.3 cm.
- Dam's Production: NR 9@99, YR 2@109, REA 2@111. Calving Interval 9@364 days.
- Adjusted Ultrasound Scan Data: %IMF 2.40, REA 12.9, Ratio 100, Rib Fat .28, Rump Fat .31.
- Her maternal brother was the \$6100 top-selling bull of the 2014 Weeks Angus Sale selected by Clelland Looney Jr, Lenox IA. Royal Cattle Co, Dewitt IA and Sarah Waigand, Afton IA own maternal sisters.
- A maternal sister was selected by KEY Ranch, Elwood NE in 2017 and two others are retained in this herd including the dam of lot 19.
- Recommended for heifers or cows.**

LOT  
12

## WAF Black Granite 818

Born: 02/02/18 19230456 Tattoo: 818 Bull

Connealy Consensus 7229 #\*  
**Connealy Black Granite#\***  
17028963 Eura Elga of Conanga 9109 #

Mogck Bullseye #\*  
**WAF Blackcap Bessie W424**  
17966949 Weeks Blackcap Bessie W708

Connealy Consensus #\*  
Blue Lilly of Conanga 16  
S A V Bismarck 5682 #+  
Eura Cal of Conanga 56B  
MOGCK Sure Shot #  
Mogck Mary 1255  
Larks Canyon 74D4 #  
W A F Blackcap Bessie W257

PRODUCTION EPDs				MATERNAL EPDs				\$ VALUES				
CED	BW	WW	YW	CEM	Milk	\$EN	\$W	\$F	\$G	\$B		
+15	-1.6	+50	+84	+16	+25	-6.53	+52.03	+35.02	+33.21	+117.73		
CARCASS	CW	+37	.28	MARB	+41	.24	REA	+69	.27	FAT	+0.09	.24

- Individual Performance: BW 66, BWR 79, 205 Wt 701, WWR 100, 365 Wt 1175, YWR 99. Yearling Scrotal Measurement 37.5 cm.
- Dam's Production: BR 2@80, NR 2@101, YR 2@98, IMF 2@118.
- Adjusted Ultrasound Scan Data: %IMF 2.92, Ratio 116, REA 15.0, Ratio 116, Rib Fat .21, Ratio 84, Rump Fat .24, Ratio 92.
- His maternal brother was the \$3100 selection of Dennis Crall, Orient IA in 2017.
- This calving ease prospect recorded the #1 highest CED and #3 lowest BW EPD in the sale offering. Moreover, he posted the #1 largest RE measurement.
- Recommended for heifers or cows.**

LOT  
13

## WAF Black Granite 814

Born: 02/15/18 19236946 Tattoo: 814 Bull

Connealy Consensus 7229 #\*  
**Connealy Black Granite#\***  
17028963 Eura Elga of Conanga 9109 #

TC Aberdeen 759 #  
**W A F Miss Blitz W329**  
17696347 Weeks Miss Blitz W800

Connealy Consensus #\*  
Blue Lilly of Conanga 16  
S A V Bismarck 5682 #+  
Eura Cal of Conanga 56B  
C R A Bextor 872 5205 608 #  
TC Blackbird 4034 #+  
S A V 8180 Traveler 004 #  
Weeks Miss Blitz W063

PRODUCTION EPDs				MATERNAL EPDs				\$ VALUES				
CED	BW	WW	YW	CEM	Milk	\$EN	\$W	\$F	\$G	\$B		
+12	-0.1	+46	+79	+13	+22	-0.66	+42.58	+28.84	+26.39	+86.47		
CARCASS	CW	+26	.28	MARB	+28	.25	REA	+55	.28	FAT	+0.21	.25

- Individual Performance: BW 78, BWR 92, 205 Wt 678, WWR 96, 365 Wt 1131, YWR 95. Yearling Scrotal Measurement 35.8 cm.
- Dam's Production: BR 3@92, NR 3@95, YR 2@98, REA 2@100, Rib Fat 2@92. Calving Interval 4@357 days.
- Adjusted Ultrasound Scan Data: %IMF 1.67, REA 13.3, Ratio 103, Rib Fat .25, Ratio 100, Rump Fat .25, Ratio 96.
- His maternal brother was the herd sire selection of Roger Jensen, Fontanelle IA in 2018.
- Maternal grandsire, TC Aberdeen 759 was the \$77,000 top selling bull of the 2008 TC Ranch Sale. Today he is a high accuracy Genex calving ease sire with Pathfinder status.
- Recommended for heifers or cows.**

LOT  
14

## WAF Black Granite 813

Born: 01/26/18 19230898 Tattoo: 813 Bull

Connealy Consensus 7229 #\*  
**Connealy Black Granite#\***  
17028963 Eura Elga of Conanga 9109 #

Connealy Right Answer 746 #  
**W A F Blackcap Bessie W328**  
17696344 Weeks Blackcap Bessie W714

Connealy Consensus #\*  
Blue Lilly of Conanga 16  
S A V Bismarck 5682 #+  
Eura Cal of Conanga 56B  
S A V Final Answer 0035 #\*  
Happy Dell of Conanga 262  
C F A Lily's Dateline  
Swanson Blkcp Bessie 115-244

PRODUCTION EPDs				MATERNAL EPDs				\$ VALUES				
CED	BW	WW	YW	CEM	Milk	\$EN	\$W	\$F	\$G	\$B		
+13	-0.3	+47	+76	+13	+23	-0.94	+46.48	+22.83	+27.88	+74.14		
CARCASS	CW	+20	.28	MARB	+38	.24	REA	+24	.28	FAT	+0.34	.25

- Individual Performance: BW 80, BWR 94, 205 Wt 682, WWR 97, 365 Wt 1125, YWR 94. Yearling Scrotal Measurement 40.1 cm.
- Dam's Production: BR 4@100, NR 4@101, YR 3@99. Calving Interval 4@361 days.
- Adjusted Ultrasound Scan Data: %IMF 2.63, Ratio 104, REA 12.9, Ratio 100, Rib Fat .34, Rump Fat .23, Ratio 88.
- His maternal brother by TC Irish 2117 was the \$3100 calving ease sensation of the 2016 sale selected by Eldon Ernst, Adair IA. Similarly, this bull shares the #3 highest CED in the sale offering ranking in the top 10% of non-parent bulls for the trait.
- Recommended for heifers or cows.**

# Sons of PA Commando 684



PA Commando 684

REF SIRE

## C PA Commando 684

Born: 01/16/16 \*18509335 Tattoo: 684 Bull

EF Commando 1366 \*  
17082311 Riverbend Young Lucy W1470

Basin Franchise P142 #  
EF Everelda Entense 6117 +  
B/R Ambush 28 #+  
Riverbend Young Lucy T1080 +  
Bon View New Design 1407 #  
Circle A Rita 5H11-6524 +  
Connealy All Around #+  
G G Lora 450



Circle A Endeavor 2058 +

PA Lora 017-3123 +\*  
17578742 PA Lora 419-017 +\*

PRODUCTION EPDs				MATERNAL EPDs			\$ VALUES					
CED	BW	WW	YW	CEM	Milk	\$EN	\$W	\$F	\$G	\$B		
+10	+8	+66	+120	+15	+37	-29.62	+76.90	+90.56	+46.82	+153.43		
CARCASS	CW	+43	.45	MARB	+1.09	.41	REA	+39	.41	FAT	+0.47	.40

- Selected by Dale Weeks from the 2017 Peterson Angus Sale where he recorded astonishing individual performance of BW 72 lbs, BWR 90, WW 972 lbs, WWR 126, YW 1479 lbs, YWR 116, IMF 5.49%, IMF ratio 108, REA 14.8 and RE ratio 103.
- He is a paternal half-brother to the "Great Eight" bulls that highlighted and headlined the 2016 Baldrige Sale including Select Sires' \$157,000 Baldrige Bronc, Accelerated's \$35,000 Baldrige Compass C041, and Hoover Angus' \$100,000 Baldrige 38 Special.
- "684" surpassed all lofty growth expectations with a progeny WWR 25@104 and YWR 7@102.
- He combines a double-digit CED with WW, YW, SC, CEM, Milk, Marb, \$W, \$F, \$G, \$QG and \$B in the top 15% or better.

## LOT 15 WAF Commando 829

Born: 02/26/18 19230478 Tattoo: 829 Bull

EF Commando 1366 \*  
PA Commando 684 \*  
18509335 PA Lora 017-3123 +\*

EF Complement 8088 #\*  
Riverbend Young Lucy W1470  
Circle A Endeavor 2058 +  
PA Lora 419-017 +\*  
PA Power Tool 9108 #+\*  
Hallie of Conanga 888A #  
TC Broadside 150 +\*  
Weeks Evening Tinge W908 \*

Connealy Power Tool 888A  
WAF Evening Tinge W632  
18588936 WAF Evening Tinge W433 #

PRODUCTION EPDs				MATERNAL EPDs			\$ VALUES					
CED	BW	WW	YW	CEM	Milk	\$EN	\$W	\$F	\$G	\$B		
+8	+2.1	+64	+116	+11	+35	-36.67	+59.19	+84.60	+42.48	+151.72		
CARCASS	CW	+45	.21	MARB	+84	.17	REA	+39	.21	FAT	+0.28	.18

- Individual Performance: BW 86, 205 Wt 776, WWR 110, 365 Wt 1298, YWR 109. Yearling Scrotal Measurement 40.1 cm.
- Dam's Production: NR 1@110, YR 1@109.
- Adjusted Ultrasound Scan Data: %IMF 2.31, REA 12.5, Rib Fat .24, Ratio 96, Rump Fat .27.
- Born unassisted out of a first-calf heifer that recorded an individual adj weaning wt of 766 lbs with a WWR 110.
- He recorded the #2 heaviest adj weaning wt and the #4 heaviest adj yearling wt. Moreover, he posts the #1 WW EPD, the #1 YW EPD, the #2 MB EPD and the #2 \$W and \$B in the sale offering.
- He ranks in the top 15% for WW, YW and MB EPDs among non-parent bulls.

## LOT 16 WAF Commando 828

Born: 01/24/18 19230477 Tattoo: 828 Bull

EF Commando 1366 \*  
PA Commando 684 \*  
18509335 PA Lora 017-3123 +\*

EF Complement 8088 #\*  
Riverbend Young Lucy W1470  
Circle A Endeavor 2058 +  
PA Lora 419-017 +\*  
PA Power Tool 9108 #+\*  
Hallie of Conanga 888A #  
Connealy Irish 0204 #\*  
W A F Evening Tinge W216

Connealy Power Tool 888A  
WAF Evening Tinge W630  
18588932 WAF Evening Tinge W420

PRODUCTION EPDs				MATERNAL EPDs			\$ VALUES					
CED	BW	WW	YW	CEM	Milk	\$EN	\$W	\$F	\$G	\$B		
+7	+2.4	+58	+109	+11	+34	-31.28	+52.20	+75.62	+43.51	+127.91		
CARCASS	CW	+33	.21	MARB	+88	.17	REA	+39	.21	FAT	+0.49	.18

- Individual Performance: BW 91, 205 Wt 744, WWR 106, 365 Wt 1245, YWR 105. Yearling Scrotal Measurement 40.6 cm.
- Dam's Production: NR 1@106, YR 1@105, IMF 1@101, REA 1@109.
- Adjusted Ultrasound Scan Data: %IMF 2.55, Ratio 101, REA 14.0, Ratio 109, Rib Fat .35.
- Born unassisted out of a first-calf heifer.
- He is a large ribeye bull that posted the #2 highest YW EPD and the #1 highest Marb EPD in the sale.
- His dam is among the first daughters of Connealy Power Tool 888A to reach production. Currently his 4 daughters have an average nursing ratio of 109.



Connealy Power Tool 888A

Maternal grandsire of Lots 15 & 16

## LOT 17 WAF Commando 827

Born: 02/10/18 19230472 Tattoo: 827 Bull

EF Commando 1366 \*  
PA Commando 684 \*  
18509335 PA Lora 017-3123 +\*

EF Complement 8088 #\*  
Riverbend Young Lucy W1470  
Circle A Endeavor 2058 +  
PA Lora 419-017 +\*  
M A Broadside 1334-822 #  
TC Marcia 1069 #  
W A F Lutton 817  
Weeks Blueblood Lady W700 #

TC Broadside 150 +\*  
WAF Blueblood Lady W606  
18602715 W A F Blueblood Lady W009

PRODUCTION EPDs				MATERNAL EPDs			\$ VALUES					
CED	BW	WW	YW	CEM	Milk	\$EN	\$W	\$F	\$G	\$B		
+10	+0.5	+60	+104	+13	+32	-26.46	+60.26	+64.68	+36.99	+127.16		
CARCASS	CW	+37	.21	MARB	+73	.16	REA	+23	.21	FAT	+0.48	.18

- Individual Performance: BW 73, BWR 95, 205 Wt 743, WWR 106, 365 Wt 1239, YWR 104. Yearling Scrotal Measurement 34.6 cm.
- Dam's Production: BR 1@95, NR 1@106, YR 1@104, IMF 1@120.
- Adjusted Ultrasound Scan Data: %IMF 3.03, Ratio 120, REA 12.5, Rib Fat .32, Rump Fat .40.
- Born unassisted out of a first-calf heifer.
- He posts the #1 highest \$W value and shares the #3 WW EPD in the sale offering.
- Recommended for heifers or cows.



# Sons of PA Commando 684

LOT  
18

## WAF Commando 826

Born: 02/02/18 19230470 Tattoo: 826 Bull

EF Commando 1366 \*  
PA Commando 684 \*  
18509335 PA Lora 017-3123 +\*

EF Complement 8088 #\*  
Riverbend Young Lucy W1470  
Circle A Endeavor 2058 +  
PA Lora 419-017  
M A Broadside 1334-822 #  
TC Marcia 1069 #  
Connealy Thunder #  
W A F Blueblood Lady 5127

TC Broadside 150 +\*  
WAF Blueblood Lady W602  
18588855 W A F Blueblood Lady W005 #

PRODUCTION EPDs				MATERNAL EPDs			\$ VALUES			
CED	BW	WW	YW	CEM	Milk	\$EN	\$W	\$F	\$G	\$B
+8	+1.4	+58	+104	+13	+32	-25.81	+56.42	+66.14	+32.26	+118.75

CARCASS	CW	+35	.21	MARB	+56	.17	REA	+21	.21	FAT	+0.40	.18
---------	----	-----	-----	------	-----	-----	-----	-----	-----	-----	-------	-----

- Individual Performance: BW 75, BWR 98, 205 Wt 718, WWR 102, 365 Wt 1212, YWR 102. Yearling Scrotal Measurement 37.4 cm.
- Dam's Production: BR 1@98, NR 1@102, YR 1@102.
- Adjusted Ultrasound Scan Data: %IMF 1.94, REA 11.3, Rib Fat .33, Rump Fat .29.
- Born unassisted out of a first-calf heifer that gained her admittance into the Weeks Angus breeding program with individual performance highlighted by a WW 711 lbs and WWR 107.
- He boasts the #4 highest \$W value in the sale offering.
- **Recommended for heifers or cows.**

LOT  
20

## WAF Commando 822

Born: 02/04/18 19230466 Tattoo: 822 Bull

EF Commando 1366 \*  
PA Commando 684 \*  
18509335 PA Lora 017-3123 +\*

EF Complement 8088 #\*  
Riverbend Young Lucy W1470  
Circle A Endeavor 2058 +  
PA Lora 419-017 +\*  
Connealy Irish 0204 #\*  
TC Erica Eileen 6055 #  
TC Aberdeen 759 #  
Weeks Evening Tinge W801

TC Irish 2117  
WAF Evening Tinge W532  
18254237 W A F Evening Tinge W330

PRODUCTION EPDs				MATERNAL EPDs			\$ VALUES			
CED	BW	WW	YW	CEM	Milk	\$EN	\$W	\$F	\$G	\$B
+9	+0.5	+55	+102	+14	+30	-22.17	+52.39	+64.56	+43.06	+127.09

CARCASS	CW	+34	.21	MARB	+81	.17	REA	+53	.21	FAT	+0.47	.18
---------	----	-----	-----	------	-----	-----	-----	-----	-----	-----	-------	-----

- Individual Performance: BW 79, BWR 96, 205 Wt 716, WWR 102, 365 Wt 1191, YWR 100. Yearling Scrotal Measurement 39.4 cm.
- Dam's Production: BR 2@95, NR 2@103, YR 2@104, IMF 2@112, REA 2@114. Calving Interval 2@355 days.
- Adjusted Ultrasound Scan Data: %IMF 3.15, Ratio 125, REA 14.3, Ratio 111, Rib Fat .35, Rump Fat .33.
- Benschhof Farms, Winterset IA chose his maternal brother from the 2018 offering at \$3800.
- He excelled on ultrasound day when he posted the #3 highest IMF measurement and the #2 largest ribeye area among his contemporaries.
- **Recommended for heifers or cows.**

LOT  
19

## WAF Commando 825

Born: 02/02/18 19230468 Tattoo: 825 Bull

EF Commando 1366 \*  
PA Commando 684 \*  
18509335 PA Lora 017-3123 +\*

EF Complement 8088 #\*  
Riverbend Young Lucy W1470  
Circle A Endeavor 2058 +  
PA Lora 419-017 +\*  
S A V Final Answer 0035 #\*  
Happy Dell of Conanga 262  
Bon View New Design 878 #  
Weeks' Erica W389

Connealy Right Answer 746 #  
WAF Erica W544  
18254243 Weeks Erica W810

PRODUCTION EPDs				MATERNAL EPDs			\$ VALUES			
CED	BW	WW	YW	CEM	Milk	\$EN	\$W	\$F	\$G	\$B
+10	+0.0	+57	+102	+13	+32	-25.67	+57.21	+63.11	+39.41	+125.23

CARCASS	CW	+35	.23	MARB	+72	.18	REA	+28	.22	FAT	+0.30	.20
---------	----	-----	-----	------	-----	-----	-----	-----	-----	-----	-------	-----

- Individual Performance: BW 78, BWR 95, 205 Wt 733, WWR 104, 365 Wt 1194, YWR 100. Yearling Scrotal Measurement 38.3 cm.
- Dam's Production: BR 2@98, NR 2@106, YR 1@100, IMF 1@102, Rib Fat 1@92. Calving Interval 2@363 days.
- Adjusted Ultrasound Scan Data: %IMF 2.56, Ratio 102, REA 12.6, Rib Fat .23, Ratio 92, Rump Fat .29.
- His 2017 maternal sister by Connealy Power Tool 888A was retained in the herd.
- He boasts the #3 highest \$W value in the sale offering.
- **Recommended for heifers or cows.**

LOT  
21

## WAF Commando 830

Born: 01/30/18 19230479 Tattoo: 830 Bull

EF Commando 1366 \*  
PA Commando 684 \*  
18509335 PA Lora 017-3123 +\*

EF Complement 8088 #\*  
Riverbend Young Lucy W1470  
Circle A Endeavor 2058 +  
PA Lora 419-017 +\*  
SydGen C C & 7 #\*  
Erica of Ellston C124 #  
Larks Canyon 74D4 #  
W A F Blackcap Bessie W257

Hoover Dam #\*  
WAF Blackcap Bessie W635  
18588943 Weeks Blackcap Bessie W708

PRODUCTION EPDs				MATERNAL EPDs			\$ VALUES			
CED	BW	WW	YW	CEM	Milk	\$EN	\$W	\$F	\$G	\$B
+12	-1.1	+51	+89	+15	+29	-14.57	+53.94	+43.37	+38.74	+112.30

CARCASS	CW	+31	.23	MARB	+71	.18	REA	+24	.22	FAT	+0.36	.20
---------	----	-----	-----	------	-----	-----	-----	-----	-----	-----	-------	-----

- Individual Performance: BW 68, BWR 89, 205 Wt 686, WWR 97, 365 Wt 1131, YWR 95. Yearling Scrotal Measurement 37.3 cm.
- Dam's Production: BR 1@89, NR 1@97, YR 1@95.
- Adjusted Ultrasound Scan Data: %IMF 2.47, REA 11.0, Rib Fat .26, Rump Fat .26, Ratio 100.
- Born unassisted out of a first-calf heifer that recorded individual performance highlighted by a BWR 90 and WWR 103.
- He ranks in the breed's top 10% for CED and BW EPDs.
- **Recommended for heifers or cows.**



**Connealy Right Answer 746**  
Maternal grandsire of Lot 19



**Hoover Dam**  
Maternal grandsire of Lot 21

# Sons of Connealy Safeguard 8111



## WAF Safeguard 711

\$4700 paternal brother to Lots 22 & 23  
selected by Brad Wiley, IA



## WAF Evening Tinge W624

\$2700 top-selling paternal sister to Lots 22 & 23  
Selected by Ryan Benshoof, IA

## LOT 22 WAF Safeguard 810

Born: 02/23/18 19231225 Tattoo: 810 Bull

PA Safeguard 021 #\*  
**Connealy Safeguard 8111**  
17888856 Black Chi of Conanga 8111 #

TC Broadside 150 +\*  
**W A F Blueblood Lady W307**  
17696307 W A F Blueblood Lady W005 #

G A R New Design 5050 #+  
PA Lorna Marshall 2905-730 #+  
Connealy Contrast #\*  
Black C of Conanga 203 T949 #+  
M A Broadside 1334-822 #  
TC Marcia 1069 #  
Connealy Thunder #  
W A F Blueblood Lady 5127

PRODUCTION EPDs				MATERNAL EPDs			\$ VALUES					
CED	BW	WW	YW	CEM	Milk	\$EN	\$W	\$F	\$G	\$B		
+9	+0.4	+51	+98	+10	+29	-19.45	+46.83	+59.97	+30.73	+113.88		
<b>CARCASS</b>	<b>CW</b>	+34	.22	<b>MARB</b>	+44	.17	<b>REA</b>	+40	.21	<b>FAT</b>	+0.28	.19

- Individual Performance: BW 75, BWR 88, 205 Wt 680, WWR 97, 365 Wt 1254, YWR 105. Yearling Scrotal Measurement 38.0 cm.
- Dam's Production: NR 4@95, YR 1@105, IMF 1@101. Calving Interval 4@369 days.
- Adjusted Ultrasound Scan Data: %IMF 2.54, Ratio 101, REA 12.6, Rib Fat .44, Rump Fat .35.
- His dam posted an individual 205-day wt of 718 lbs to ratio 108 and gain her admittance into the Weeks Angus breeding program.
- In 2017 his maternal sister was chosen by Russ Keating, Winterset IA
- His Pathfinder grandam records BR 5@95 and NR 5@105.
- **Recommended for heifers or cows.**

## LOT 23 WAF Safeguard 811

Born: 02/24/18 19230449 Tattoo: 811 Bull

PA Safeguard 021 #\*  
**Connealy Safeguard 8111**  
17888856 Black Chi of Conanga 8111 #

TC Broadside 150 +\*  
**W A F Barmiss W310**  
17696313 W A F Barmiss W013 #

G A R New Design 5050 #+  
PA Lorna Marshall 2905-730 #+  
Connealy Contrast #\*  
Black C of Conanga 203 T949 #+  
M A Broadside 1334-822 #  
TC Marcia 1069 #  
TC One Way 8159  
Weeks Barmiss W804

PRODUCTION EPDs				MATERNAL EPDs			\$ VALUES					
CED	BW	WW	YW	CEM	Milk	\$EN	\$W	\$F	\$G	\$B		
+5	+2.3	+53	+102	+7	+32	-26.07	+45.60	+66.02	+28.28	+131.91		
<b>CARCASS</b>	<b>CW</b>	+44	.22	<b>MARB</b>	+31	.17	<b>REA</b>	+62	.21	<b>FAT</b>	-.009	.18

- Individual Performance: BW 88, 205 Wt 715, WWR 102, 365 Wt 1304, YWR 110. Yearling Scrotal Measurement 41.6 cm.
- Dam's Production: NR 4@103, YR 2@107, REA 2@104, Rib Fat 2@92.
- Adjusted Ultrasound Scan Data: %IMF 1.46, REA 13.4, Ratio 104, Rib Fat .20, Ratio 80, Rump Fat .33.
- His maternal brother was chosen by Matt Thompson, Orient IA in 2018, while his maternal sister was the thoughtful selection of Charles & Linda Horton for their Humeston IA herd.
- He recorded the #2 heaviest adj yearling wt in the sale offering.



## PA Safeguard 021

Sire of reference sire D

REF SIRE

## D Connealy Safeguard 8111

Born: 02/13/14 17888856 Tattoo: 4799 Bull

G A R New Design 5050 #+  
**PA Safeguard 021 #\***  
16772185 PA Lorna Marshall 2905-730 #+

Connealy Contrast #  
**Black Chi of Conanga 8111 #**  
16204676 Black C of Conanga 203 T949 #+

B/R New Design 036 #  
G A R Precision 706  
Woodhill Foresight #+  
Petes 2905 Dateline Marshall  
Connealy Danny Boy #  
Doris of Conanga 669 #  
S A V 8180 Traveler 004 #  
Black Crane of Conanga 204



PRODUCTION EPDs				MATERNAL EPDs			\$ VALUES					
CED	BW	WW	YW	CEM	Milk	\$EN	\$W	\$F	\$G	\$B		
+8	+8	+49	+95	+7	+35	-19.69	+56.27	+43.09	+42.09	+123.59		
<b>CARCASS</b>	<b>CW</b>	+40	.45	<b>MARB</b>	+61	.40	<b>REA</b>	+76	.40	<b>FAT</b>	-.001	.39

- Selected by Dale Weeks as his choice of the 2015 Connealy Angus Bull Sale where he had amassed a data set that included a BWR 93, WWR 101, YWR 108 and RE ratio 108.
- His dam is a second-generation pathfinder dam.
- 8111 is sired by PA Safeguard 021 who has earned a reputation as a bull that adds carcass value, eye appeal and performance in an outcross package.

# Sons of FAR Long Range



FAR Long Range

REF SIRE

## E FAR Long Range

Born: 03/22/15 \*18289317 Tattoo: 83C Bull

Young Dale Knock Out 134U  
**Young Dale Xcaliber 32X**  
 17992571 Brookmore Tibbie 222T

Sitz Upward 307R #  
**F A R Karama 114X**  
 16863286 F A R Karama 124P

LaGrand MAF Antidote 5775 +  
 Young Dale Erica 26N  
 S A V 004 Density 4336 #+  
 Brookmore Tibbie 35N  
 Connealy Onward #\*  
 Sitz Henrietta Pride 81M  
 F A R Rito 9412 - 294M  
 Far Karama 302Y



PRODUCTION EPDs				MATERNAL EPDs				\$ VALUES				
CED	BW	WW	YW	CEM	Milk	\$EN	\$W	\$F	\$G	\$B		
-2	+3.6	+88	+141	-2	+21	-19.59	+75.55	+109.14	+17.77	+158.71		
CARCASS	CW	+67	.43	MARB	+0.13	.37	REA	+0.89	.38	FAT	-0.004	.36

- Long Range was the \$19,000 selection of Vin Mar Cattle Company from the 2016 Frey Angus Ranch Sale. He is a paternal brother to Frey's Grand Champion Pen of Three Bulls at the 2016 NWSS.
- He is a bigger framed, stout-made, outcross bull with a WW EPD in the top 1% and YW EPD in the top 2%.



WAF Irish 530

\$4800 maternal brother to Lot 24  
 Selected by Dennis Crall, IA

LOT 25

## WAF Long Range 812

Born: 02/03/18 19230451 Tattoo: 812 Bull

Young Dale Xcaliber 32X  
**FAR Long Range\***  
 18289317 F A R Karama 114X

Hoover Dam #\*  
**W A F Lady W327**  
 17696342 Weeks Lady W710

Young Dale Knock Out 134U  
 Brookmore Tibbie 222T  
 Sitz Upward 307R #  
 F A R Karama 124P  
 SydGen C C & 7 #\*  
 Erica of Ellston C124 #  
 S A V 8180 Traveler 004 #  
 C F L Lifter 4008

PRODUCTION EPDs				MATERNAL EPDs				\$ VALUES				
CED	BW	WW	YW	CEM	Milk	\$EN	\$W	\$F	\$G	\$B		
+5	+0.6	+56	+88	+5	+21	-3.89	+51.46	+38.04	+27.53	+118.64		
CARCASS	CW	+40	.22	MARB	+0.29	.17	REA	+0.64	.22	FAT	-0.002	.19

- Individual Performance: BW 80, BWR 94, 205 Wt 681, WWR 97, 365 Wt 1092, YWR 92. Yearling Scrotal Measurement 38.4 cm.
- Dam's Production: BR 4@100, NR 4@101. Calving Interval 4@363 days.
- Adjusted Ultrasound Scan Data: %IMF 1.80, REA 12.2, Rib Fat .15, Ratio 60, Rump Fat .19, Ratio 73.
- His maternal sister in the 2018 offering was selected by Charles and Linda Horton, Humeston IA, while another was retained in the Weeks Angus breeding program.
- Maternal grandsire, Hoover Dam has been among the top 10 bulls in the breed for progeny registrations for four years running. He is one of the most proven and predictable sires in the breed for calving ease, carcass, docility and phenomenal daughters.

LOT 24

## WAF Long Range 802

Born: 02/14/18 19230390 Tattoo: 802 Bull

Young Dale Xcaliber 32X  
**FAR Long Range\***  
 18289317 F A R Karama 114X

Stock Right W962  
**W A F Eline 5100**  
 15212419 Weeks Eline W080 #

Young Dale Knock Out 134U  
 Brookmore Tibbie 222T  
 Sitz Upward 307R #  
 F A R Karama 124P  
 TC Stockman 365 #  
 Blossom V603 #  
 Werner Fly Traveler 458  
 Weeks Eline W861

PRODUCTION EPDs				MATERNAL EPDs				\$ VALUES				
CED	BW	WW	YW	CEM	Milk	\$EN	\$W	\$F	\$G	\$B		
-1.3	+3.6	+61	+104	-1.3	+24	-15.45	+45.94	+63.95	+25.29	+137.03		
CARCASS	CW	+49	.21	MARB	+0.27	.16	REA	+0.64	.21	FAT	-0.001	.17

- Individual Performance: BW 84, 205 Wt 726, WWR 103, 365 Wt 1241, YWR 104. Yearling Scrotal Measurement 39.1 cm.
- Dam's Production: NR 8@108, YR 3@104, REA 8@103, Rib Fat 8@94, Rump Fat 8@100. Calving Interval 12@364 days.
- Adjusted Ultrasound Scan Data: %IMF 2.05, REA 13.7, Ratio 106, Rib Fat .29, Rump Fat .25, Ratio 96.
- His dam has an unblemished calving record throughout her long production career maintaining a 364-day calving interval and producing 3 herd replacements.
- Maternal brothers include the \$3700 herd sire choice of Matt Thompson, Orient IA in 2018, a \$4800 feature in the 2016 sale to Dennis Crall, Orient IA, twin brothers that sold to Matt Kirkland, Winterset IA and Baur Farms Inc, Van Meter IA and a 2009 bull chosen by Steve Chandler, Winterset IA.
- He posts the #2 highest WW EPD in the sale offering.
- Born twin with a cow.

JOIN US FOR  
 A  
 COMPLIMENTARY  
 LUNCH ON  
 SALE DAY

# Sons of PA Fortitude 2500



PA Fortitude 2500

## REF SIRE F PA Fortitude 2500

Born: 12/15/11 \* 17418539 Freeze Brand: 2500 Bull

Rito 112 of 2536 Rito 616 #+\*  
GAR-EGL Protege #+\*  
15098880 L B 6807 Isabel 339

SydGen C C & 7 #\*  
G G Clara 0171  
17071963 G G Clara 7192

Rito 616 of 4B20 6807 #  
G A R Precision 2536  
D H D Traveler 6807 #  
L B E31 Isabel 168 #  
S A F Connection #+  
SydGen Forever Lady 4087  
G A R Retail Product #  
G G Clara 404 +



PRODUCTION EPDs				MATERNAL EPDs			\$ VALUES					
CED	BW	WW	YW	CEM	Milk	\$EN	\$W	\$F	\$G	\$B		
+11	-1.1	+56	+102	+17	+16	+2.94	+49.08	+74.76	+49.99	+164.07		
<b>CARCASS</b>	<b>CW</b>	<b>+44</b>	<b>.65</b>	<b>MARB</b>	<b>+83</b>	<b>.62</b>	<b>REA</b>	<b>+72</b>	<b>.59</b>	<b>FAT</b>	<b>-.032</b>	<b>.62</b>

- Fortitude gained national recognition as the \$75,000 Genex selection from Peterson Angus that has proven to be a reliable outcross calving ease sire with a double-digit CED and BW, RADG, DMI, CEM, Marb, Fat, \$G, \$QG, \$YG and \$B, all in the top 15% or better.
- The dam of Fortitude came to Peterson Angus as their first-choice selection of the entire 2010 calf crop at Generic Genetics, IA.

## LOT 27 WAF Fortitude 824

Born: 01/25/18 19254329 Tattoo: 824 Bull

GAR-EGL Protege #+\*  
PA Fortitude 2500 \*  
17418539 G G Clara 0171

Hoover Dam #\*  
WAF Blossom W543  
18254241 Weeks Blossom W808 #

Rito 112 of 2536 Rito 616 #+\*  
L B 6807 Isabel 339  
SydGen C C & 7 #\*  
G G Clara 7192  
SydGen C C & 7 #\*  
Erica of Ellston C124 #  
Bon View New Design 878 #  
Weeks' Blossom W370

PRODUCTION EPDs				MATERNAL EPDs			\$ VALUES					
CED	BW	WW	YW	CEM	Milk	\$EN	\$W	\$F	\$G	\$B		
+8	+0.3	+57	+102	+12	+22	-11.32	+48.35	+63.11	+42.19	+145.18		
<b>CARCASS</b>	<b>CW</b>	<b>+44</b>	<b>.27</b>	<b>MARB</b>	<b>+68</b>	<b>.24</b>	<b>REA</b>	<b>+60</b>	<b>.27</b>	<b>FAT</b>	<b>+0.04</b>	<b>.24</b>

- Individual Performance: BW 83, 205 Wt 766, WWR 109, 365 Wt 1272, YWR 107. Yearling Scrotal Measurement 39.6 cm.
- Dam's Production: BR 2@96, NR 2@104, YR 1@107, REA 1@103. Calving Interval 2@347 days.
- Adjusted Ultrasound Scan Data: %IMF 2.44, REA 13.3, Ratio 103, Rib Fat .30, Rump Fat .35.
- His maternal sister was the herd replacement acquisition of Charles and Linda Horton, Humeston IA from the 2018 sale offering.
- He recorded the #5 heaviest adj weaning wt of the sale offering.
- Recommended for heifers or cows.**



VAR Discovery 2240  
Maternal grandsire of Lot 26

## LOT 26 WAF Fortitude 823

Born: 01/29/18 19254330 Tattoo: 823 Bull

GAR-EGL Protege #+\*  
PA Fortitude 2500 \*  
17418539 G G Clara 0171

V A R Discovery 2240 \*  
WAF Miss Blitz W540  
18254234 Weeks Miss Blitz W800

Rito 112 of 2536 Rito 616 #+\*  
L B 6807 Isabel 339  
SydGen C C & 7 #\*  
G G Clara 7192  
A A R Ten X 7008 S A #\*  
Deer Valley Rita 0308 #\*  
S A V 8180 Traveler 004 #  
Weeks Miss Blitz W063

PRODUCTION EPDs				MATERNAL EPDs			\$ VALUES					
CED	BW	WW	YW	CEM	Milk	\$EN	\$W	\$F	\$G	\$B		
+14	-2.8	+48	+88	+16	+19	-1.66	+41.42	+43.67	+46.32	+128.39		
<b>CARCASS</b>	<b>CW</b>	<b>+35</b>	<b>.27</b>	<b>MARB</b>	<b>+79</b>	<b>.23</b>	<b>REA</b>	<b>+39</b>	<b>.26</b>	<b>FAT</b>	<b>-0.17</b>	<b>.23</b>

- Individual Performance: BW 67, BWR 82, 205 Wt 691, WWR 98, 365 Wt 1171, YWR 98. Yearling Scrotal Measurement 35.2 cm.
- Dam's Production: BR 1@82, NR 1@98, YR 1@98, IMF 1@124, Rib Fat 1@76, Rump Fat 1@85.
- Adjusted Ultrasound Scan Data: %IMF 3.12, Ratio 124, REA 10.5, Rib Fat .19, Ratio 76, Rump Fat .22, Ratio 85.
- This calving ease prospect recorded the #2 highest CED and shares the #1 lowest BW EPD of the sale offering.
- Born unassisted out of a first-calf heifer.
- Recommended for heifers or cows.**

## LOT 28 WAF Fortitude 831

Born: 01/26/18 19254348 Tattoo: 831 Bull

GAR-EGL Protege #+\*  
PA Fortitude 2500 \*  
17418539 G G Clara 0171

New Design V505  
Weeks Barmiss W716  
15875266 W A F Bar Miss 5111

Rito 112 of 2536 Rito 616 #+\*  
L B 6807 Isabel 339  
SydGen C C & 7 #\*  
G G Clara 7192  
Toebben New Design 2093 +  
Babette V854  
C A Future Direction 5321 #  
Weeks' Barmiss W1J1

PRODUCTION EPDs				MATERNAL EPDs			\$ VALUES					
CED	BW	WW	YW	CEM	Milk	\$EN	\$W	\$F	\$G	\$B		
+9	-0.9	+45	+80	+14	+18	+3.47	+36.98	+31.32	+46.53	+117.89		
<b>CARCASS</b>	<b>CW</b>	<b>+31</b>	<b>.26</b>	<b>MARB</b>	<b>+69</b>	<b>.22</b>	<b>REA</b>	<b>+62</b>	<b>.26</b>	<b>FAT</b>	<b>-0.028</b>	<b>.23</b>

- Individual Performance: BW 80, BWR 95, 205 Wt 697, WWR 99, 365 Wt 1185, YWR 99. Yearling Scrotal Measurement 37.8 cm.
- Dam's Production: BR 10@99, NR 10@101, YR 6@100, REA 7@103, Rib Fat 7@94, Rump Fat 7@85. Calving Interval 10@365 days.
- Adjusted Ultrasound Scan Data: %IMF 3.26, Ratio 129, REA 13.3, Ratio 103, Rib Fat .19, Ratio 76, Rump Fat .17, Ratio 65.
- Maternal brothers serve as herd sires for Schultz Farms, Macksburg IA, Matt Kirkland, Winterset IA, Benschhof Farms, Winterset IA and Baur Farms Inc, West Des Moines IA.
- One maternal sister serves the Joe Radke herd at Van Meter IA and another is retained.
- Recommended for heifers or cows.**

# Sons of WAF Bullseye 428



**Mogck Bullseye**  
Sire of Reference sire G

## REF SIRE **G** WAF Bullseye 428

Born: 02/06/14 17966948 Tattoo: 428 Bull

MOGCK Sure Shot #  
**Mogck Bullseye #\***  
17102085 Mogck Mary 1255

Bon View New Design 878 #  
**Weeks Blackcap Bessie W616**  
15469335 Swanson Blkcp Bessie 115-244

Mytty In Focus #\*  
Mogck Black Lass 2065  
K C F Bennett Coalition SCC #  
Mogck Mary C 1757  
B/R New Design 036 #  
Bon View Gammer 85  
Circle A Dividend 3090  
Swanson Blackcap Bessie 14

PRODUCTION EPDs				MATERNAL EPDs			\$ VALUES						
CED	BW	WW	YW	CEM	Milk	\$EN	\$W	\$F	\$G	\$B			
+5	+1.4	+49	+87	+12	+27	-11.55	+45.52	+41.14	+28.27	+109.85			
CARCASS		CW	+35	.29	MARB	+36	.24	REA	+45	.28	FAT	+018	.25

- This Weeks Angus herd sire earned his pasture service duties with individual performance of BW 85 lbs, 205-day wt 761 lbs, WWWR 110, 365 day wt 1302 lbs, YWR 109.
- His dam has a BR 10@93 and a YR 5@104. She retired at 12 years of age after she maintained a calving interval of 10@365 days.
- His sire, Mogck Bullseye is the \$192,000 sensation best known for adding tremendous muscle and growth to his progeny. No high accuracy sire can meet or exceed Bullseye's combination of superior Docility, \$W, and \$B.



**WAF Bullseye 716**  
\$4600 full brother to Lot 29  
Selected by Brad Wiley, IA



**WAF Zara W729**  
\$2300 paternal sister to Lots 29 & 30  
Selected by Royal Cattle Co, IA

## LOT 29 WAF Bullseye 816

Born: 03/04/18 19230454 Tattoo: 816 Bull

Mogck Bullseye #\*  
**WAF Bullseye 428**  
17966948 Weeks Blackcap Bessie W616

TC Irish 2117  
**WAF Blossom W417**  
17966914 W A F Blossom W119

MOGCK Sure Shot #  
Mogck Mary 1255  
Bon View New Design 878 #  
Swanson Blkcp Bessie 115-244  
Connealy Irish 0204 #\*  
TC Erica Eileen 6055 #  
LaGrand Final Answer 9065  
Weeks Blossom W904

PRODUCTION EPDs				MATERNAL EPDs			\$ VALUES						
CED	BW	WW	YW	CEM	Milk	\$EN	\$W	\$F	\$G	\$B			
+3	+1.9	+56	+102	+11	+24	-14.13	+45.36	+63.83	+32.26	+129.99			
CARCASS		CW	+41	.20	MARB	+42	.16	REA	+60	.20	FAT	+010	.18

- Individual Performance: BW 85, 205 Wt 710, WWWR 101, 365 Wt 1217, YWR 102. Yearling Scrotal Measurement 39.5 cm.
- Dam's Production: NR 3@103, YR 3@105, REA 3@111, Rib Fat 3@100. Calving Interval 3@365 days.
- Adjusted Ultrasound Scan Data: %IMF 2.91, Ratio 115, REA 13.6, Ratio 105, Rib Fat .25, Ratio 100, Rump Fat .32.
- His full brother was the \$4600 selection of Brad Wiley, Lorimor IA in 2018 while a maternal brother was the herd sire choice of Ford Family Angus, Winterset IA at \$2800 in 2017.

## LOT 30 WAF Bullseye 820

Born: 03/08/18 19230464 Tattoo: 820 Bull

Mogck Bullseye #\*  
**WAF Bullseye 428**  
17966948 Weeks Blackcap Bessie W616

TC Irish 2117  
**WAF Blossom W515**  
18254185 W A F Blossom W119

MOGCK Sure Shot #  
Mogck Mary 1255  
Bon View New Design 878 #  
Swanson Blkcp Bessie 115-244  
Connealy Irish 0204 #\*  
TC Erica Eileen 6055 #  
LaGrand Final Answer 9065  
Weeks Blossom W904

PRODUCTION EPDs				MATERNAL EPDs			\$ VALUES						
CED	BW	WW	YW	CEM	Milk	\$EN	\$W	\$F	\$G	\$B			
+4	+1.5	+55	+96	+12	+25	-12.61	+48.94	+53.37	+31.91	+129.43			
CARCASS		CW	+42	.20	MARB	+41	.16	REA	+59	.20	FAT	+006	.17

- Individual Performance: BW 81, BWR 99, 205 Wt 738, WWWR 105, 365 Wt 1205, YWR 101. Yearling Scrotal Measurement 37.9 cm.
- Dam's Production: BR 2@97, NR 2@103, YR 2@99, IMF 2@117, REA 2@100, Rib Fat 2@81, Rump Fat 2@99. Calving Interval 2@371 days.
- Adjusted Ultrasound Scan Data: %IMF 2.28, REA 13.3, Ratio 103, Rib Fat .20, Ratio 80, Rump Fat .29.
- His maternal brother was the \$3200 herd sire selection of Cumings Family Farms, Prole IA from the 2018 sale offering.

# Weeks Angus Yearling Heifers



**Baldridge Colonel C251**  
Sire of Lot 31



**WAF Discovery 607**  
\$4900 second-top selling maternal brother to Lot 32  
Selected by David Robinson, IA



**Connealy Black Granite**  
Sire of Lot 32



**FAR Long Range**  
Sire of Lot 33

## LOT 31 WAF Barmiss W818

Born: 02/01/18 19230406 Tattoo: W818 Cow

baldrige Xpand x743 +  
**Baldrige Colonel C251 +\***  
18493773 Baldrige Isabel Y69 \*

TC Aberdeen 759 #  
**W A F Barmiss W217**  
17383374 Weeks Barmiss W704

Hoover Dam #\*  
Baldrige Queen S87  
Styles Upgrade J59 #\*  
Baldrige Isabel T935 +  
C R A Bextor 872 5205 608 #  
TC Blackbird 4034 #+  
Lemmon Newline C804+  
Weeks' Barmiss W153

PRODUCTION EPDs				MATERNAL EPDs			\$ VALUES				
CED	BW	WW	YW	CEM	Milk	\$EN	\$W	\$F	\$G	\$B	
+9	-1.0	+45	+79	+12	+20	1.84	+40.19	+29.53	+44.13	+104.32	
CARCASS	CW	I+26	.05	MARB	I+.60	.05	REA	I+.70	.05	FAT	I-.020 .05

- Individual Performance: BW 67, BWR 85, 205 Wt 592, WWR 97.
- Dam's Production: BR 5@92. Calving Interval 5@365 days.
- Her dam was an individual performance knockout with a birth wt 71 lbs and adj weaning wt 774 lbs.
- Her maternal sister was chosen by Rita Huntrods, Van Meter IA in 2018 while maternal brothers have been the herd sire selections made by Norm & Ben Young, Truro IA and Dennis Faust, Dexter IA.
- She posted a double-digit CED and a BW EPD in the top 10% of non-parent cows.

## LOT 32 WAF Queen Alice W807

Born: 02/10/18 19230392 Tattoo: W807 Cow

Connealy Consensus 7229 #\*  
**Connealy Black Granite# \***  
17028963 Eura Elga of Conanga 9109 #

TC Aberdeen 759 #  
**W A F Queen Alice W106**  
17143750 Weeks Queen Alice W603

Connealy Consensus #\*  
Blue Lilly of Conanga 16  
S A V Bismarck 5682 #+  
Eura Cal of Conanga 568  
C R A Bextor 872 5205 608 #  
TC Blackbird 4034 #+  
Lemmon Newline C804 #+  
W A F Queen Alice W254

PRODUCTION EPDs				MATERNAL EPDs			\$ VALUES				
CED	BW	WW	YW	CEM	Milk	\$EN	\$W	\$F	\$G	\$B	
+10	+0.9	+48	+83	+11	+23	-4.04	+43.09	+34.61	+34.25	+110.50	
CARCASS	CW	I+33	.05	MARB	I+.41	.05	REA	I+.70	.05	FAT	I+.003 .05

- Individual Performance: BW 78, BWR 99, 205 Wt 583, WWR 95.
- Dam's Production: NR 4@98, IMF 2@114, REA 2@113, Rib Fat 2@94, Rump Fat 2@71. Calving Interval 6@366 days.
- Her maternal brother was the \$4900 second-top selling bull of the 2017 auction selected by David Robinson, Winterset IA. Mark Munden, Lorimor IA selected another brother in 2015.
- Two maternal sisters are retained in the herd.

## LOT 33 WAF Lady W826

Born: 02/10/18 19238115 Tattoo: W826 Cow

Young Dale Xcaliber 32X  
**FAR Long Range \***  
18289317 F A R Karama 114X

TC Aberdeen 759 #  
**W A F Lady W334**  
17696356 Weeks Lady W819 #

Young Dale Knock Out 134U  
Brookmore Tibbie 222T  
Sitz Upward 307R #  
F A R Karama 124P  
C R A Bextor 872 5205 608 #  
TC Blackbird 4034 #+  
New Design V505  
Weeks Lady W610

PRODUCTION EPDs				MATERNAL EPDs			\$ VALUES				
CED	BW	WW	YW	CEM	Milk	\$EN	\$W	\$F	\$G	\$B	
+8	-0.4	+55	+88	+7	+22	-5.34	+52.31	+38.74	+28.50	+125.37	
CARCASS	CW	I+43	.05	MARB	I+.34	.05	REA	I+.64	.05	FAT	I+.012 .05

- Individual Performance: BW 72, BWR 91, 205 Wt 595, WWR 97.
- Dam's Production: BR 3@90. Calving Interval 3@364 days.
- Her maternal sister was the herd replacement selection of Angela Snyder, Winterset IA.
- She ranks in the top 15% for BW EPD among non-parent cows.

# Daughters of Connealy Safeguard 8111



## TC Aberdeen 759

Maternal grandsire of Lots 31, 32, 33, 34, 37 & 38

## LOT 36 W A F Lady W849

Born: 03/05/18 Unregistered Purebred Angus Tattoo: W849 Cow

PA Safeguard 021 #\*  
**Connealy Safeguard 8111**  
**17888856** Black Chi of Conanga 8111 #

Hoover Dam #\*  
**WAF Lady W326 #**  
**17696341** Weeks Lady W710

G A R New Design 5050 #+  
 PA Lorna Marshall 2905-730 #+  
 Connealy Contrast #\*  
 Black C of Conanga 203 T949 #+  
 SydGen C C & 7 #\*  
 Erica of Ellston C124 #  
 S A V 8180 Traveler 004 #  
 C F L Lifter 4008

### Sire's EPDs

CED	BW	WW	YW	SC	DOC	HP	CEM	Milk	CW	MB	RE	FAT	\$W	\$B
+8	+8	+49	+95	+77	+30	+13.8	+7	+35	+40	+59	+75	-.001	+56.35	+123.37

### Dam's EPDs

CED	BW	WW	YW	SC	DOC	HP	CEM	Milk	CW	MB	RE	FAT	\$W	\$B
+8	+0	+41	+69	+1.13	NA	NA	+11	+25	+29	+54	+51	+.007	+41.88	+102.40

- Individual Performance: BW 70, BWR 89, 205 Wt 598, WWR 98.
- Dam's Production: BR 4@95, NR 4@104, YR 1@103, IMF 1@105, Rib Fat 1@74, Rump Fat 1@91. Calving Interval 4@373 days.
- Two maternal sisters have been retained in the herd, while a maternal brother was chosen by Schulz Farms, Macksburg IA in 2016.
- Maternal grandsire, Hoover Dam, is a high accuracy calving ease bull that sires tremendous muscle expression, functional soundness and eye appeal. After setting the record selling price in Hoover Angus history, he became the #1 semen sales bull at both ABS and ORigen studs.

## LOT 34 WAF Zara W848

Born: 02/22/18 Unregistered Purebred Angus Tattoo: W848 Cow

PA Safeguard 021 #\*  
**Connealy Safeguard 8111**  
**17888856** Black Chi of Conanga 8111 #

TC Aberdeen 759 #  
**WAF Zara W201**  
**17383327** Weeks' Zara W182

G A R New Design 5050 #+  
 PA Lorna Marshall 2905-730 #+  
 Connealy Contrast #\*  
 Black C of Conanga 203 T949 #+  
 C R A Bextor 872 5205 608 #  
 TC Blackbird 4034 #+  
 Stock Right W962  
 Weeks Zara W864

### Sire's EPDs

CED	BW	WW	YW	SC	DOC	HP	CEM	Milk	CW	MB	RE	FAT	\$W	\$B
+8	+8	+49	+95	+77	+30	+13.8	+7	+35	+40	+59	+75	-.001	+56.35	+123.37

### Dam's EPDs

CED	BW	WW	YW	SC	DOC	HP	CEM	Milk	CW	MB	RE	FAT	\$W	\$B
+5	+2.1	+48	+85	+26	NA	NA	+9	+26	+24	+45	+52	+.008	+41.77	+92.62

- Individual Performance: BW 81, 205 Wt 658, WWR 108.
- Dam's Production: NR 5@102, YR 1@103, REA 1@108. Calving Interval 5@363 days.
- Don and Jean Gordon, Creston IA selected a maternal brother as their herd sire in 2017 while K Land Angus Farm, Correctionville IA chose a sister from the 2016 offering and her 2017 and 2014 sisters are retained in the herd.

## LOT 37 WAF Lady W821

Born: 03/17/18 19230429 Tattoo: W821 Cow

PA Safeguard 021 #\*  
**Connealy Safeguard 8111**  
**17888856** Black Chi of Conanga 8111 #

TC Aberdeen 759 #  
**W A F Lady W229 \***  
**17383392** Weeks Lady W819 #

G A R New Design 5050 #+  
 PA Lorna Marshall 2905-730 #+  
 Connealy Contrast #\*  
 Black C of Conanga 203 T949 #+  
 C R A Bextor 872 5205 608 #  
 TC Blackbird 4034 #+  
 New Design V505  
 Weeks Lady W610

### PRODUCTION EPDs

CED	BW	WW	YW	SC	DOC	HP	CEM	Milk	\$EN	\$W	\$F	\$G	\$B
+9	-0.2	+41	+78	+6	+31	-13.15	+42.94	+30.51	+39.65	+115.17			

### MATERNAL EPDs

CARCASS	CW	I+33	.05	MARB	I+.58	.05	REA	I+.60	.05	FAT	I+.010	.05

- Individual Performance: BW 74, BWR 94, 205 Wt 579, WWR 95.
- Dam's Production: NR 5@102, YR 1@108, IMF 1@111. Calving Interval 5@374 days.
- Her maternal brother was the herd sire selection of Kenny Finch, Saint Charles IA in 2015.
- Three maternal sisters have been retained in the herd. The eldest posts NR 2@102 and produced the Lot 43 heifer in this offering.

## LOT 35 W A F Evening Tinge W850

Born: 01/22/18 Unregistered Purebred Angus Tattoo: W850 Cow

PA Safeguard 021 #\*  
**Connealy Safeguard 8111**  
**17888856** Black Chi of Conanga 8111 #

Connealy Irish 0204 #\*  
**WAF Evening Tinge W420**  
**17966992** W A F Evening Tinge W216

G A R New Design 5050 #+  
 PA Lorna Marshall 2905-730 #+  
 Connealy Contrast #\*  
 Black C of Conanga 203 T949 #+  
 Connealy Wrangler  
 Black Crest of Conanga 5640 #  
 Connealy Right Answer 746 #  
 Weeks Evening Tinge W702

### Sire's EPDs

CED	BW	WW	YW	SC	DOC	HP	CEM	Milk	CW	MB	RE	FAT	\$W	\$B
+8	+8	+49	+95	+77	+30	+13.8	+7	+35	+40	+59	+75	-.001	+56.35	+123.37

### Dam's EPDs

CED	BW	WW	YW	SC	DOC	HP	CEM	Milk	CW	MB	RE	FAT	\$W	\$B
+9	+1	+49	+93	+1.02	NA	NA	+13	+26	+36	+39	+47	+.002	+44.08	+116.53

- Individual Performance: BW 79, 205 Wt 619, WWR 101.
- Dam's Production: NR 3@103. Calving Interval 3@364 days.
- Each of her two maternal sisters have been retained at Weeks Angus Farm. The eldest produced the PA Commando 684 son that sells as Lot 16.

## LOT 38 WAF Blossom W820

Born: 01/30/18 19230408 Tattoo: W820 Cow

PA Safeguard 021 #\*  
**Connealy Safeguard 8111**  
**17888856** Black Chi of Conanga 8111 #

TC Aberdeen 759 #  
**W A F Blossom W225**  
**17383388** Weeks Blossom W808 #

G A R New Design 5050 #+  
 PA Lorna Marshall 2905-730 #+  
 Connealy Contrast #\*  
 Black C of Conanga 203 T949 #+  
 C R A Bextor 872 5205 608 #  
 TC Blackbird 4034 #+  
 Bon View New Design 878 #  
 Weeks' Blossom W370

### PRODUCTION EPDs

CED	BW	WW	YW	SC	DOC	HP	CEM	Milk	\$EN	\$W	\$F	\$G	\$B
+11	-0.8	+40	+75	+9	+30	-10.41	+42.75	+25.86	+38.81	+113.52			

### MATERNAL EPDs

CARCASS	CW	I+33	.05	MARB	I+.54	.05	REA	I+.66	.05	FAT	I+.009	.05

- Individual Performance: BW 76, BWR 96, 205 Wt 549, WWR 90.
- Dam's Production: BR 5@95, NR 5@97, YR 1@95, REA 1@112, Rib Fat 1@73. Calving Interval 5@350 days.
- She ranks in the top 15% for CED and top 10% for BW among non-parent cows.
- Ford Family Angus, Winterset IA chose her full brother from the 2017 auction. A maternal sister sold to K Land Angus Farm, Correctionville IA in 2016.
- Her dam entered the Weeks Angus breeding program after recording an individual performance data set that featured a BWR 63 and WWR 102.
- Maternal grandsire, TC Aberdeen 759 was the \$77,000 top selling bull of the 2008 TC Ranch Sale. Today Aberdeen is a high accuracy Genex calving ease sire with EPDs that excel in both growth and carcass traits.

# Daughters of PA Commando 684



**PA Commando 684**  
Sire of Lots 39 - 41



**Connealy Power Tool 888A**  
Maternal grandsire of Lot 41

## LOT 39 WAF Lady W838

Born: 01/29/18 19230475 Tattoo: W838 Cow

EF Commando 1366 \*  
**PA Commando 684 \***  
18509335 PA Lora 017-3123 +\*  
  
TC Irish 2117  
**WAF Lady W623**  
18588919 W A F Lady W326 #

EF Complement 8088 #\*  
Riverbend Young Lucy W1470  
Circle A Endeavor 2058 +  
PA Lora 419-017 +\*  
Connealy Irish 0204 #\*  
TC Erica Eileen 6055 #  
Hoover Dam #\*  
Weeks Lady W710

PRODUCTION EPDs				MATERNAL EPDs			\$ VALUES			
CED	BW	WW	YW	CEM	Milk	\$EN	\$W	\$F	\$G	\$B
+13	-1.2	+58	+104	+16	+30	-23.22	+58.48	+66.14	NA	NA
CARCASS	CW	NA	MARB	NA	REA	NA	FAT	NA	NA	NA

- Individual Performance: BW 58, BWR 84, 205 Wt 636, WWR 104.
- Dam's Production: BR 1@84, NR 1@104.
- She ranks in the top 5% for CED and top 10% for BW EPD among non-parent cows.
- Her dam gained her admission to the Weeks Angus breeding program with individual performance featuring a BWR 96 and WWR 103.

## LOT 41 WAF Zara W839

Born: 02/02/18 19230476 Tattoo: W839 Cow

EF Commando 1366 \*  
**PA Commando 684 \***  
18509335 PA Lora 017-3123 +\*  
  
Connealy Power Tool 888A  
**WAF Zara W629**  
18588931 WAF Zara W418 #

EF Complement 8088 #\*  
Riverbend Young Lucy W1470  
Circle A Endeavor 2058 +  
PA Lora 419-017 +\*  
PA Power Tool 9108 #\*  
Hallie of Conanga 888A #  
LaGrand Bismarck 0084  
W A F Zara W201

PRODUCTION EPDs				MATERNAL EPDs			\$ VALUES			
CED	BW	WW	YW	CEM	Milk	\$EN	\$W	\$F	\$G	\$B
+11	+0.5	+53	+96	+13	+35	-26.74	+55.85	+54.81	NA	NA
CARCASS	CW	NA	MARB	NA	REA	NA	FAT	NA	NA	NA

- Individual Performance: BW 74, 205 Wt 634, WWR 104.
- Dam's Production: NR 1@104.
- Her dam is among the first daughters of Connealy Power Tool 888A to reach production. Currently his 4 daughters have an average nursing ratio of 109.
- She records a CED in the top 15% of non-parent cows.

## LOT 40 WAF Blueblood Lady W832

Born: 01/27/18 19230463 Tattoo: W832 Cow

EF Commando 1366 \*  
**PA Commando 684 \***  
18509335 PA Lora 017-3123 +\*  
  
TC Broadside 150 +\*  
**WAF Blueblood Lady W511**  
18254180 W A F Blueblood Lady W110

EF Complement 8088 #\*  
Riverbend Young Lucy W1470  
Circle A Endeavor 2058 +  
PA Lora 419-017 +\*  
M A Broadside 1334-822 #  
TC Marcia 1069 #  
S A V 8180 Traveler 004 #  
Weeks Blueblood Lady W700 #

PRODUCTION EPDs				MATERNAL EPDs			\$ VALUES					
CED	BW	WW	YW	CEM	Milk	\$EN	\$W	\$F	\$G	\$B		
+7	+2.0	+58	+106	+13	+29	-23.26	+50.38	+69.91	+39.21	+126.39		
CARCASS	CW	I+35	.05	MARB	I+.72	.05	REA	I+.30	.05	FAT	I+.034	.05

- Individual Performance: BW 74, BWR 97, 205 Wt 616, WWR 101.
- Dam's Production: BR 2@99, NR 2@97, YR 1@109, IMF 1@142. Calving Interval 2@325 days.
- She stems from the first calf crop by, PA Commando 684 who now posts a progeny WWR 25@104 and YWR 7@102.
- Maternal grandsire, TC Broadside 150 was Dale Week's \$10,000 selection from the 2012 TC Ranch Sale. Broadside is a maternal brother to Pathfinder sire, TC Franklin 619.



**WAF Barmiss W740**  
Lead-off heifer in the 2018 sale.  
Heifers of this quality sell again.



# Daughters of PA Fortitude 2500

## LOT 42 WAF Evening Tinge W825

Born: 01/28/18 19254340 Tattoo: W825 Cow

GAR-EGL Protege #+\*  
PA Fortitude 2500 \*  
17418539 G G Clara 0171

TC Aberdeen 759 #  
W A F Evening Tinge W330  
17696348 Weeks Evening Tinge W801

Rito 112 of 2536 Rito 616 #+\*  
L B 6807 Isabel 339  
SydGen C C & 7 #\*  
G G Clara 7192  
C R A Bextor 872 5205 608 #  
TC Blackbird 4034 #+  
C F A Lily's Dateline  
Evening Tinge W152

PRODUCTION EPDs				MATERNAL EPDs			\$ VALUES					
CED	BW	WW	YW	CEM	Milk	\$EN	\$W	\$F	\$G	\$B		
+6	+1.0	+46	+85	+12	+20	-1.09	+35.79	+39.62	+43.05	+122.31		
CARCASS	CW	I+34	.05	MARB	I+.66	.05	REA	I+.58	.05	FAT	I-.001	.05

- Individual Performance: BW 80, 205 Wt 588, WWR 96.
- Dam's Production: NR 4@100. Calving Interval 4@363 days.
- Her maternal sister was the \$2500 top-selling heifer of the 2018 sale selected by Charles & Linda Horton, Humeston IA. Another sister was the lead-off and top-selling heifer in the 2017 sale offering selected by Ryan Benschhof, Winterset IA at \$2700.



### WAF Evening Tinge W728

\$2500 top-selling maternal sister to Lot 42  
Selected by Charles & Linda Horton, IA

## LOT 43 WAF Lady W833

Born: 01/25/18 19254332 Tattoo: W833 Cow

GAR-EGL Protege #+\*  
PA Fortitude 2500 \*  
17418539 G G Clara 0171

W A F Blossoms Boy 320 +  
WAF Lady W524  
18254202 W A F Lady W229 \*

Rito 112 of 2536 Rito 616 #+\*  
L B 6807 Isabel 339  
SydGen C C & 7 #\*  
G G Clara 7192  
Bon View New Design 878 #  
Blossom V603 #  
TC Aberdeen 759 #  
Weeks Lady W819 #

PRODUCTION EPDs				MATERNAL EPDs			\$ VALUES					
CED	BW	WW	YW	CEM	Milk	\$EN	\$W	\$F	\$G	\$B		
+9	-0.2	+47	+85	+12	+21	-2.41	+40.22	+38.92	+40.14	+129.36		
CARCASS	CW	I+39	.05	MARB	I+.58	.05	REA	I+.59	.05	FAT	I-.008	.05

- Individual Performance: BW 68, BWR 90, 205 Wt 588, WWR 96.
- Dam's Production: BR 2@97, NR 2@102, YR 1@109, REA 1@100, Rib Fat 1@97. Calving Interval 2@353 days.
- Her grandam posts NR 5@102 and YR 1@108. She produced the Lot 37 heifer in this offering.
- A maternal brother was selected by Benschhof Farms, Winterset IA in 2018 at \$4300.



### PA Fortitude 2500

Sire of Lots 42 - 44

## LOT 44 WAF Lady W846

Born: 02/06/18 19254345 Tattoo: W846 Cow

GAR-EGL Protege #+\*  
PA Fortitude 2500 \*  
17418539 G G Clara 0171

S A V 8180 Traveler 004 #  
Weeks Lady W811  
16144302 C F L Lifter 4008

Rito 112 of 2536 Rito 616 #+\*  
L B 6807 Isabel 339  
SydGen C C & 7 #\*  
G G Clara 7192  
Sitz Traveler 8180 #  
Boyd Forever Lady 8003 +  
CFL Weightlifter Pride 1254  
Lone Lady 08

PRODUCTION EPDs				MATERNAL EPDs			\$ VALUES					
CED	BW	WW	YW	CEM	Milk	\$EN	\$W	\$F	\$G	\$B		
+4	+1.0	+43	+78	+11	+17	+5.91	+31.04	+29.13	+39.86	+110.83		
CARCASS	CW	I+31	.05	MARB	I+.57	.05	REA	I+.50	.05	FAT	I-.006	.05

- Individual Performance: BW 71, BWR 91, 205 Wt 577, WWR 94.
- Dam's Production: NR 8@101, YR 1@109, IMF 2@112, REA 2@110. Calving Interval 9@357 days.
- Wayne Mc Ginnis, Greenfield IA selected her maternal brothers in 2018 and 2011. A sister sold at \$2100 and was selected by Randy Golightly in 2015 and another was the 2013 choice of Greg Lilly, Greenfield IA.



### WAF Irish 732

\$4100 maternal brother to Lot 44  
Selected by Wayne Mc Ginnis, IA

# Daughters of TC Irish 2117



TC Irish 2117

REF SIRE

## H TC Irish 2117

Born: 02/09/12 17398361 Tattoo: 2117 Bull

Connealy Wrangler  
**Connealy Irish 0204 #\***  
 16761484 Black Crest of Conanga 5640 #

TC Friction 3275  
**TC Erica Eileen 6055 #**  
 15417921 TC Erica Eileen 3072 #

Connealy Cowboy  
 Kelly of Conanga 577  
 Mytty In Focus #  
 Black Cresha of Conanga 3314  
 Connealy Forefront #  
 TC Pride 8067 #  
 Sitz Alliance 6595 #  
 TC Erica Eileen 9063



PRODUCTION EPDs				MATERNAL EPDs			\$ VALUES			
CED	BW	WW	YW	CEM	Milk	\$EN	\$W	\$F	\$G	\$B
+6	+1.5	+54	+108	+15	+18	-9.19	+34.54	+74.95	+34.38	+146.88
CARCASS	CW	I+33	.05	MARB	I+.41	.05	REA	I+.42	.05	FAT

- "2117" was selected as the \$14,500 ½ interest selection by Dale Weeks from the 2013 TC Ranch Sale where he posted individual performance of BW 88 lbs, BWR 100, 205 day wt 709 lbs, WWR 105, 365 day wt 1383 lbs, YWR 110, IMF 5.00%, IMF ratio 126, REA 14.8 and RE ratio 112.
- His dam is a second-generation Pathfinder that combines Connealy Forefront and Sitz Alliance.

## LOT 45 WAF Barmiss W806

Born: 02/27/18 19230388 Tattoo: W806 Cow

Connealy Irish 0204 #\*  
**TC Irish 2117**  
 17398361 TC Erica Eileen 6055 #

TC One Way 8159  
**W A F Barmiss W013 #**  
 16793514 Weeks Barmiss W804

Connealy Wrangler  
 Black Crest of Conanga 5640 #  
 TC Friction 3275  
 TC Erica Eileen 3072 #  
 TC One Way 618 #+  
 TC Marcia 9069 #  
 S A V 8180 Traveler 004 #  
 Weeks' Barmiss W153

PRODUCTION EPDs				MATERNAL EPDs			\$ VALUES			
CED	BW	WW	YW	CEM	Milk	\$EN	\$W	\$F	\$G	\$B
-2	+4.5	+53	+100	+9	+25	-15.10	+33.07	+62.26	+31.46	+112.98
CARCASS	CW	I+33	.05	MARB	I+.41	.05	REA	I+.42	.05	FAT

- Individual Performance: BW 95, 205 Wt 661, WWR 108.
- Dam's Production: NR 5@105, YR 1@99, IMF 2@114, Rump Fat 2@84. Calving Interval 7@370 days.
- She stems from a Pathfinder dam that earned her entrance into the Weeks Angus breeding program with individual performance highlighted by a WWR 112.
- Roger Jensen, Fontanelle IA selected her maternal brother from the 2013 offering while Burgmaier Farms, Creston IA acquired another brother in 2015.
- Her maternal sister is retained in the herd and currently posts BR 3@100 and NR 3@103 on AHIR. Another sister was chosen by Cole Brown, Winterset IA in 2018, and still another by Joe Radke, Van Meter IA in 2016.



## WAF Barmiss W705

Maternal sister to Lot 45  
 Selected by Cole Brown, IA

## WAF Blackcap Bessie W634

Maternal sister to Lot 47  
 Selected by KEY Ranch, NE



## LOT 46 WAF Evening Tinge W815

Born: 02/19/18 19230403 Tattoo: W815 Cow

Connealy Irish 0204 #\*  
**TC Irish 2117**  
 17398361 TC Erica Eileen 6055 #

Connealy Right Answer 746 #  
**W A F Evening Tinge W113**  
 17143770 Weeks Evening Tinge W801

Connealy Wrangler  
 Black Crest of Conanga 5640 #  
 TC Friction 3275  
 TC Erica Eileen 3072 #  
 S A V Final Answer 0035 #\*  
 Happy Dell of Conanga 262  
 C F A Lily's Dateline  
 Evening Tinge W152

PRODUCTION EPDs				MATERNAL EPDs			\$ VALUES			
CED	BW	WW	YW	CEM	Milk	\$EN	\$W	\$F	\$G	\$B
+3	+2.7	+51	+100	+11	+19	-7.11	+30.36	+63.72	+28.86	+114.81
CARCASS	CW	I+35	.05	MARB	I+.35	.05	REA	I+.44	.05	FAT

- Individual Performance: BW 84, 205 Wt 604, WWR 99.
- Dam's Production: BR 4@100, NR 4@96, YR 1@111. Calving Interval 6@365 days.
- Nelson and Mariann Thornton, Winterset, IA added her maternal sister to their breeding program in 2017 while Tom Walker Jr, St Charles IA and Paul King, Cumming IA are using her brothers as their herd sires.

## LOT 47 WAF Blackcap Bessie W835

Born: 02/24/18 19230471 Tattoo: W835 Cow

Connealy Irish 0204 #\*  
**TC Irish 2117**  
 17398361 TC Erica Eileen 6055 #

Lemmon Newline C804 #+  
**Weeks Blackcap Bessie W604**  
 15469324 W A F Blackcap Bessie W256

Connealy Wrangler  
 Black Crest of Conanga 5640 #  
 TC Friction 3275  
 TC Erica Eileen 3072 #  
 B/R New Design 036 #  
 White Fence Pride H1  
 Stock Right W962  
 Swanson Blkcp Bessie 115-244

PRODUCTION EPDs				MATERNAL EPDs			\$ VALUES			
CED	BW	WW	YW	CEM	Milk	\$EN	\$W	\$F	\$G	\$B
+7	+0.5	+41	+76	+14	+19	4.34	+31.85	+26.95	+31.50	+97.70
CARCASS	CW	I+29	.05	MARB	I+.33	.05	REA	I+.59	.05	FAT

- Individual Performance: BW 70, BWR 90, 205 Wt 593, WWR 97.
- Dam's Production: BR 11@95, NR 11@97, REA 1@102, Rib Fat 1@96, Rump Fat 1@70. Calving Interval 11@364 days.
- Maternal sisters have been the herd replacement selections of KEY Ranch, Elwood NE; Joe Radke, Van Meter IA and Shawn Boyle and Sons, Earlham IA.
- Two maternal sisters have been retained.

# Daughters of WAF Bullseye 428



## WAF Bullseye 716

\$4600 paternal brother to Lots 48 - 50  
Selected by Brad Wiley, IA



## WAF Zara W729

\$2300 paternal sister to Lots 48 - 50  
Selected by Royal Cattle Co, IA

## LOT 48 WAF Bessie W828

Born: 02/27/18 19230459 Tattoo: W828 Cow

Mogck Bullseye #\*  
**WAF Bullseye 428**  
17966948 Weeks Blackcap Bessie W616

Connealy Irish 0204 #\*\*  
**WAF Bessie W432**  
17966943 Weeks Bessie W902

MOGCK Sure Shot #  
Mogck Mary 1255  
Bon View New Design 878 #  
Swanson Blkcp Bessie 115-244  
Connealy Wrangler  
Black Crest of Conanga 5640 #  
S A V 8180 Traveler 004 #  
Weeks' Bessie W156

PRODUCTION EPDs				MATERNAL EPDs			\$ VALUES			
CED	BW	WW	YW	CEM	Milk	\$EN	\$W	\$F	\$G	\$B
+2	+2.5	+53	+95	+10	+24	-10.80	+42.08	+52.96	NA	NA
CARCASS	CW	NA	NA	MARB	NA	REA	NA	FAT	NA	NA

- Individual Performance: BW 91, 205 Wt 647, WWR 106.
- Dam's Production: NR 2@102. Calving Interval 2@351 days.
- Roger Frank, Fontanelle IA selected her maternal sister from the 2018 offering.
- Her sire, WAF Bullseye 428 was an individual performance standout posting a BW 85 lbs, 205-day wt 761 lbs, WWR 110, 365-day wt 1302 lbs, YWR 109.

## LOT 49 WAF Eline W831

Born: 03/11/18 19230461 Tattoo: W831 Cow

Mogck Bullseye #\*  
**WAF Bullseye 428**  
17966948 Weeks Blackcap Bessie W616

TC Irish 2117  
**WAF Eline W510**  
18254178 W A F Eline W109

MOGCK Sure Shot #  
Mogck Mary 1255  
Bon View New Design 878 #  
Swanson Blkcp Bessie 115-244  
Connealy Irish 0204 #\*\*  
TC Erica Eileen 6055 #  
TC One Way 8159  
Weeks Eline W611 #

PRODUCTION EPDs				MATERNAL EPDs			\$ VALUES					
CED	BW	WW	YW	CEM	Milk	\$EN	\$W	\$F	\$G	\$B		
+4	+1.6	+51	+94	+12	+25	-12.23	+42.82	+52.54	+30.45	+114.17		
CARCASS	CW	I+35	.05	MARB	I+37	.05	REA	I+52	.05	FAT	I+0.04	.05

- Individual Performance: BW 81, 205 Wt 640, WWR 105.
- Dam's Production: NR 2@102, YR 1@97.
- Her maternal brother was among the most sought-after calving ease bulls of the 2018 sale where Alan Wildin, Winterset IA cast the winning bid.



## Connealy Irish 0204

Maternal grandsire of Lot 48

## LOT 50 WAF Miss Blitz W834

Born: 03/03/18 19230469 Tattoo: W834 Cow

Mogck Bullseye #\*  
**WAF Bullseye 428**  
17966948 Weeks Blackcap Bessie W616

Hoover Dam #\*\*  
**WAF Miss Blitz W545**  
18254245 Weeks Miss Blitz W813

MOGCK Sure Shot #  
Mogck Mary 1255  
Bon View New Design 878 #  
Swanson Blkcp Bessie 115-244  
SydGen C C & 7 #\*  
Erica of Ellston C124 #  
Bon View New Design 878 #  
W A F Miss Blitz W044

PRODUCTION EPDs				MATERNAL EPDs			\$ VALUES					
CED	BW	WW	YW	CEM	Milk	\$EN	\$W	\$F	\$G	\$B		
-1	+3.8	+48	+87	+7	+26	-10.17	+35.05	+41.84	+32.88	+108.33		
CARCASS	CW	I+32	.05	MARB	I+42	.05	REA	I+50	.05	FAT	I+0.06	.05

- Individual Performance: BW 89, 205 Wt 614, WWR 100.
- Dam's Production: NR 2@99, YR 1@97, REA 1@101, Rib Fat 1@87, Rump Fat 1@88.
- Her maternal brother was chosen by Greg Tucker, Maxburg IA from the 2018 sale.
- Her prolific grandam has NR 7@105, YR 2@105, IMF 2@104 and RE 2@106 with a calving interval of 8@366 days.



**AL & JEANNE CONOVER**  
641-227-3537 - 641-227-3792 (FAX)  
DAVE SWEENEY - 641-373-4340  
www.conoverauction.com  
conover@conoverauction.com

# WEEKS *Angus Farm* PRODUCTION SALE



WAF Bullseye 716

**\$4600 Full Brother to Lot 29**



WAF Irish 732

**\$4100 Maternal Brother to Lot 44**



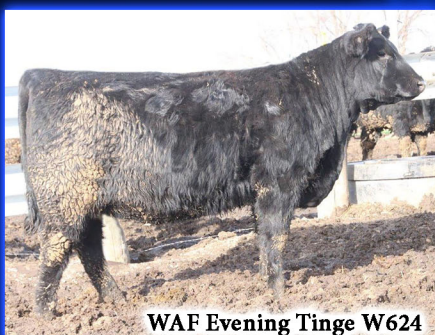
WAF Final Answer 406

**\$4100 Maternal Brother to Lot 4**



WAF Magnus 638

**\$3300 Maternal Brother to Lot 6**



WAF Evening Tinge W624

**\$2700 Paternal Sister to Lots 22-23**



WAF Zara W729

**\$2300 Paternal Sister to Lots 29 & 30**



WAF Barmiss W740

**Our lead off heifer 2018**