

# WEEKS

*Angus Farm*



## PRODUCTION SALE



*Saturday - 1:00 PM*

**MARCH 7**

**2015**

Madison County Livestock Auction  
*Winterset, IOWA*

# WEEKS *Angus Farm*

## PRODUCTION SALE

**SELLING 54 LOTS**

*37 Yearling Bulls  
17 Yearling Heifers*

*Saturday - 1:00 PM*  
**MARCH 7  
2015**

Madison County Livestock Auction  
*Winterset, IOWA*

### GENERAL INFORMATION

**SALE LOCATION:** Madison County Livestock Auction, Winterset, IA. 1204 West Summit St., Winterset, IA. Located S.W. corner of Winterset on Hwy 92.

**MOTEL HEADQUARTERS:** Super 8 Motel, 1312 N. 10th Street, Winterset, IA. Phone: 515-462-4888.

**TRANSPORTATION:** Major airlines serve the Des Moines International Airport.

**INSPECTION OF CATTLE:** All cattle will be available for inspection anytime on the farm and on March 7th at the sale site.

**HEALTH:** Interstate health papers furnished on all cattle selling. **TERMS:** Cash. Please settle for cattle promptly.

**TERMS & CONDITIONS:** All cattle sell according to the standard terms and conditions of the American Angus Association.

**TRUCKING:** We will be glad to assist in making the best possible trucking arrangements.

**INSURANCE:** Will be available through Conover Auction Service, an American Livestock agent.

**LIABILITY:** All persons attending this sale do so at their own risk, legal or otherwise, for their safety or the behavior of the animals. The Owners, Auction Service, Sale Staff and hosts assume no liability for property loss or any accidents that may occur Sale Day.

**ANNOUNCEMENTS:** From the block will take precedence over the catalog. Buyers unable to attend may send their bids to the Auction Service, Field Representatives or Auctioneers.

**LUNCH:** Complimentary Lunch Available Sale Day.

### SALE DAY PHONES

**Sale Barn: 515-462-2838**

**Dale Weeks 515-250-8854  
CAS Cell Phones  
515-491-8078 - 515-491-1335**

### LIVESTOCK PRESS REPRESENTATIVES

Livestock Plus .....Mike Sorensen, 641-745-7949

Midwest Marketer.....Tom Rooney, 515-491-6025

Brice Conover, 515-979-3890

### IOWA ANGUS ASSOCIATION

President.....Chris Miller

Vice President..... Joe Becker

Secretary.....Colby & Tricia Holmes

AUCTIONEER: PETE MYERS 641-202-0108

**Please Bring This Catalog  
With You Sale Day!**

# WEEKS *Angus Farm*

**Dale & Vikki Weeks**

2823 Grandview Lane - Winterset, IA 50273  
515-462-4661 (home) - 515-250-8854 (cell)

Sale Managed By:

**Conover**   
*Auction Service*

P.O. Box 9 - Baxter, IA 50028

**AL & JEANNE CONOVER**

641-227-3537 - 641-227-3792 (FAX)

DAVE SWEENEY - 641-373-4340

[www.conoverauction.com](http://www.conoverauction.com)

[conover@conoverauction.com](mailto:conover@conoverauction.com)



# WEEKS

*Angus Farm*  
**Dale & Vikki Weeks**  
 2823 Grandview Lane - Winterset, IA 50273  
 Home Phone (515) 462-4661  
 Dale Cell (515) 250 8854

Dear Cattlemen,

Welcome to our Annual Production Sale. 2015 marks the 19th year we have been selling Angus bulls. We are proud to offer for sale another top set of Angus yearling bulls and select group of Angus replacement heifers. I am very happy with the group of bulls we are offering. There are a number of bulls that will work great for the people looking for calving ease. They will sire the kind of calves that there is a tremendous demand for and will add value to your next calf crop.

The bulls and heifers in this year's sale are sired by the following AI sires: SAV Final Answer 0035, Connealy Right Answer 746, Hoover Dam, Connealy Irish 0204 and Mogck Bullseye. Along with our own herd sires TC One Way 8159, TC Broadside 150, TC Irish 2117 and LaGrand Bismarck 0084.

We are offering to take the bulls back home and care and feed them until you are ready to take delivery of them at a cost of \$3.00 per head per day. The bulls that we board will be semen tested at our expense at a later date. All the bulls are guaranteed to pass a breeding soundness examination.

The cattle can be inspected prior to the sale date at our farm. If you have any questions about the sale or the cattle, please give me a call.

Over the years, we have enjoyed meeting and doing business with our customers and look forward to meeting our new customers and continuing our friendship and business relationship.  
 Good cattlemen truly do care.

Sincerely,

Dale Weeks

P.S. Please join us before the sale for a complimentary lunch.

**Sale Managed By:**

**Conover**  
*Auction Service*  
 P.O. Box 9 - Baxter, IA 50028  
**AL & JEANNE CONOVER**  
 641-227-3537 • Fax: 641-227-3792  
 Email: conover@conoverauction.com  
 www.conoverauction.com  
**DAVE SWEENEY 641-373-4340**

Dear Fellow Cattlemen,

It has been a pleasure working with the Weeks family in preparing for this event. Please accept this as your opportunity to join us at the Madison County Livestock Auction to partake in the sale. This program and the breeding decisions they have made will put you in the driver's seat to reap the rewards of grid pricing premiums or to top the live markets with top quality black calves sired by reputation genetics proven across the country.

Dale and his family have continued to build and maintain a cow herd based in the fundamentals of production, performance, carcass quality and maternal value. AI sires used by the Weeks are among the top in accuracy with "spread" while remaining functionally sound. The highly scrutinized herd sire selections offer much of the same. Each of the bulls being offered has been analyzed using all the tools to define and differentiate this offering. Each bull has been evaluated with growth, ultrasound data and EPD performance in mind for your consideration in this sale book.

We look forward to seeing you all in Winterset on March 7<sup>th</sup>. If you have any questions before sale day, please don't hesitate to contact someone in the CAS office or a member of the Weeks family. We will be happy to assist you in any way.

Sincerely,  
 Al & Jeanne Conover      Dave Sweeney



Al Conover



Jeanne Conover



Dave Sweeney

# Weeks Angus Reference Sires



**MA Broadside 1334-822**  
Sire of Reference Sire A

REF

**A** *Weeks Angus* **TC Broadside 150**  
**Born:** 01/27/11 **+17038153** **Tattoo:** 150 **Bull**  
 Bon View New Design 878 # B/R New Design 036 #  
 MA Broadside 1334-822 # Bon View Gammer 85  
 15133941 MA Miss Emulous 822 WAR Alliance 9126 6006 #  
 Exar Miss Emulous 7662 #  
 Connealy Forefront # Connealy Frontline #  
 TC Marcia 1069 # Eileen Heartland Cononga6443  
 13963170 TC Marcia 7105 TC Dividend 963 #  
 Marcia 0022

PRODUCTION EPDs				MATERNAL EPDs			\$ VALUES				
CED	BW	WW	YW	CEM	Milk	SEN	\$W	\$F	\$G	\$B	
-6	+5.1	+65	+104	+4	+28	-25.80	+41.37	+60.38	+8.44	+113.35	
CARCASS	CW	+67	.22	MARB	+09	.36	REA	+53	.29	FAT	+009 .33

- Came to the Weeks program as the \$10,000 feature of the 2012 TC Ranch Sale, where he posted a strong set of performance credentials in their ET program.
- Dam is now a Whitestone Farm donor and a Pathfinder and is best known as the mother of TC Franklin 619.
- Early calves by this impressive herd sire boast eye catching early growth.



**Connealy Irish 0204**

REF

**B** *Weeks Angus* **Connealy Irish 0204**  
**Born:** 01/26/10 **16761484** **Tattoo:** 0204 **Bull**  
 Connealy Cowboy Connealy Future Direction 5321 #  
 Connealy Wrangler Beckah of Cononga 747  
 15832596 Kelly of Cononga 577 G A R Grid Maker #+  
 Connealy Bando 133 #  
 Mytty In Focus # S A F Focus of E R #  
 Black Crest of Cononga 5640 # Mytty Countess 906  
 15804444 Black Cresha of Cononga 3314 C R A Bextor 872 5205 608 #  
 Black Creesa of Cononga 5332

PRODUCTION EPDs				MATERNAL EPDs			\$ VALUES				
CED	BW	WW	YW	CEM	Milk	SEN	\$W	\$F	\$G	\$B	
+12	-0.6	+52	+104	+14	+23	-10.81	+42.33	+60.42	+42.41	+123.25	
CARCASS	CW	+48	.50	MARB	+61	.57	REA	+72	.53	FAT	-059 .52

- One of the breed's most impressive young sires to offer "spread" EPDs and a bulletproof calving ease pedigree. He also posted impressive individual performance against his contemporaries.
- Docility and top notch carcass traits round out this impressive resume. He is backed by a very solid dam that reinforces both early and yearling growth.



**Connealy Wrangler**  
Sire of Reference Sire C

REF

**C** *Weeks Angus* **TC Irish 2117**  
**Born:** 02/09/12 **17398361** **Tattoo:** 2117 **Bull**  
 Connealy Wrangler Connealy Cowboy  
 Connealy Irish 0204 Kelly of Cononga 577  
 16761484 TC Erica Eileen 6055 # Mytty In Focus #  
 Black Cresha of Cononga 3314  
 TC Friction 3275 Connealy Forefront #  
 TC Erica Eileen 6055 # TC Pride 8067  
 15417921 TC Erica Eileen 3072 Sitz Alliance 6595 #  
 TC Erica Eileen 9063

PRODUCTION EPDs				MATERNAL EPDs			\$ VALUES				
CED	BW	WW	YW	CEM	Milk	SEN	\$W	\$F	\$G	\$B	
+6	+1.2	+49	+94	+9	+26	-16.23	+36.52	+47.67	+41.15	+114.98	
CARCASS	CW	+42	.18	MARB	+70	.24	REA	+57	.24	FAT	-019 .21

- "2117" was the \$14,500 ½ interest selection by Dale in the 2013 TC Ranch Sale.
- Dam is a second generation Pathfinder and combines the likes of Connealy Forefront and Sitz Alliance 6595 as grandsires in her pedigree.



**TC One Way 8159**

REF

**D** *Weeks Angus* **TC One Way 8159**  
**Born:** 02/18/08 **16150352** **Tattoo:** 8159 **Bull**  
 Rito 112 of 2536 Rito 616 #+ Rito 616 of 4B20 6807 #  
 TC One Way 618 #+ G A R Precision 2536 [AMC]  
 15469774 TC Quality 7122 + Rito 2RT2 of 0B5 RR Traveler #  
 Landmark Quality 9248  
 War Command 7131 3247 # S A F Fame #  
 War Duster 3247 4508 #  
 TC Marcia 9069 # TC Traveler 105  
 13444170 TC Marcia 6171 # TC Marcia 1083 #

PRODUCTION EPDs				MATERNAL EPDs			\$ VALUES				
CED	BW	WW	YW	CEM	Milk	SEN	\$W	\$F	\$G	\$B	
+0	+3.4	+40	+73	+9	+30	-15.10	+26.66	+20.47	+24.31	+77.55	
CARCASS	CW	+28	.18	MARB	+57	.25	REA	+0	.25	FAT	+047 .21

- This Weeks Angus herd sire was a standout in his contemporary group at TC where he posted individual performance of WWR 112, YWR 105, IMF ratio 109 and REA ratio 104 with 125 contemporaries.
- Sire was the Lead Off bull in the 2007 TC Ranch Carload in Denver and the \$130,000 2/3 interest top seller in the 2007 TC Ranch Sale.



**Hoover Dam**

REF

**E** *Weeks Angus* **Hoover Dam**  
**Born:** 01/25/08 **#16124994** **Tattoo:** G18 **Bull**  
 S A F Connection #+ SVF Gdar 216 LTD #+  
 SydGen C C & 7 # S A F Royal Queen 5084 +  
 15330743 SydGen Forever Lady 4087 SydGen 1407 Corona 2016 #  
 S A F Forever Lady 8292 +  
 G A R Grid Maker #+  
 TC Gridiron 258 # TC Blackbird 7049 #  
 Erica of Ellston C124 # S A Neutron 377 #  
 14851883 Erica of Ellston V65 Shottish V047

PRODUCTION EPDs				MATERNAL EPDs			\$ VALUES				
CED	BW	WW	YW	CEM	Milk	SEN	\$W	\$F	\$G	\$B	
+9	+0.1	+51	+96	+11	+28	-9.32	+52.35	+50.04	+50.47	+107.58	
CARCASS	CW	+29	.73	MARB	+70	.76	REA	+1.15	.75	FAT	-043 .74

- Earned national attention when he sold for a then record setting \$47,500 from the Hoover Angus Sale. He quickly went on to become one of the heaviest used sires in the breed. Hoover Dam is an elite breed leader in docility, calving ease and carcass traits.
- Arguably the thickest muscled bull to come along in the breed in the last 20 years and is sired by the #1 Docility bull in the breed.



# Weeks Angus Yearling Bulls



## WAF Hoover Dam 426

Lot 1

### Weeks Angus **1** WAF Hoover Dam 426

**LOT 1** Born: 02/11/14 17966939 Tattoo: 426 Bull  
 SydGen C C & 7 # S A F Connection #  
 Hoover Dam # SydGen Forever Lady 4087  
**16124994** Erica of Ellston C124 # TC Gridiron 258 #  
 Erica of Ellston V65  
 B A Freedom 404 TC Freedom 104 #  
**Weeks Evening Tinge W609** B A Emperss Eva  
**15469329** Evening Tinge W312 [ CAP-DDP ] M A Focus 116 [ CAP ]  
 Evening Tinge W152 [ DDP ]

PRODUCTION EPDs				MATERNAL EPDs			\$ VALUES					
CED	BW	WW	YW	CEM	Milk	\$EN	\$W	\$F	\$G	\$B		
+8	+0.8	+44	+82	+12	+22	-5.00	+32.30	+31.82	+34.90	+83.97		
CARCASS	CW	+25	.18	MARB	+34	.22	REA	+76	.23	FAT	-0.43	.20

- Individual Performance: BW 85 lbs, BWR 98, 205 Wt. 754 lbs, WWR 104, 365 Wt. 1245 lbs, YWR 103. Scrotal Measurement: 39.4 cm.
- Dam's Production: 6 BWR 90, 6 NR 98, 2 YR 104. Calving Interval 7 @ 367 days. She posts 3 @ REA 103, Rib Fat 97, Rump Fat 81.
- Adjusted Ultrasound Scan Data: %IMF 3.07, REA 14.4, Ratio 104, Rib Fat .24, Ratio 89, Rump Fat .22, Ratio 73.
- Tied for 5th largest ribeye scan in the sale offering.
- This standout combines enviable weaning and yearling weights, EPD's and scan data as well as a Pathfinder sire.
- Cow family has maternal strength to compliment the cow power on top as well. The top selling featured heifer from the 2013 sale was an "Evening Tinge."
- Recommended for heifers.

### Weeks Angus **2** WAF Final Answer 404

**LOT 2** Born: 01/22/14 17966978 Tattoo: 404 Bull  
 Sitz Traveler 8180 # G D A R Traveler 71 #  
**S A V Final Answer 0035 #** Sitz Everelda Entense 1137  
**13592905** S A V Emulous 8145 Bon View Bando 598 [ CAC ] #  
 S A V Sky Emulous 2124  
 TC One Way 8159 TC One Way 618 #  
**W A F Blossom W010 #** TC Marcia 9069 #  
**16793516** Weeks Blossom W808 # Bon View New Design 878 #  
 Weeks' Blossom W370 [ DDP ]

PRODUCTION EPDs				MATERNAL EPDs			\$ VALUES					
CED	BW	WW	YW	CEM	Milk	\$EN	\$W	\$F	\$G	\$B		
+6	+1.4	+58	+99	+11	+26	-20.37	+44.91	+50.10	+28.23	+80.69		
CARCASS	CW	+26	.19	MARB	+61	.23	REA	+33	.23	FAT	+0.68	.21

- Individual Performance: BW 79 lbs, BWR 92, 205 Wt. 796 lbs, WWR 109, 365 Wt. 1318 lbs, YWR 109. Scrotal Measurement: 35.9 cm.
- Dam's Production: 3 BWR 97, 3 NR 106, 2 YR 106. Calving Interval 3 @ 346 days.
- Adjusted Ultrasound Scan Data: %IMF 4.20, Ratio 123, REA 13.7, Rib Fat .38, Rump Fat .29, Ratio 97.
- Posts the 2nd heaviest Adj. WW and Adj. YW as well as the 3rd best \$W of the sale offering.
- Full sister to this Pathfinder dam produced the Lot 5 feature in last year's sale. Maternal grandam produced the Lot 14 feature and a total of three daughters retained in the herd.

### Weeks Angus **3** WAF Irish 412

**LOT 3** Born: 02/01/14 17966931 Tattoo: 412 Bull  
 Connealy Irish 0204 Connealy Wrangler  
**TC Irish 2117** Black Crest of Conanga 5640 #  
**17398361** TC Erica Eileen 6055 # TC Friction 3275  
 TC Erica Eileen 3072 #  
 C R A Bextor 872 5205 608 #  
 TC Aberdeen 759 # TC Blackbird 4034 #  
**W A F Blackcap Bessie W111** Larks Canyon 74D4 #  
**17143763** Weeks Blackcap Bessie W708 W A F Blackcap Bessie W257

PRODUCTION EPDs				MATERNAL EPDs			\$ VALUES					
CED	BW	WW	YW	CEM	Milk	\$EN	\$W	\$F	\$G	\$B		
+8	+1.0	+47	+84	+10	+24	-8.21	+37.56	+33.12	+32.85	+94.18		
CARCASS	CW	+33	.11	MARB	+48	.16	REA	+52	.16	FAT	+0.03	.13

- Individual Performance: BW 77 lbs, BWR 95, 205 Wt. 697 lbs, WWR 100, 365 Wt. 1142 lbs, YWR 95. Scrotal Measurement: 34.6 cm.
- Dam's Production: 2 NR 101. Calving Interval 2 @ 342 days.
- Adjusted Ultrasound Scan Data: %IMF 3.98, Ratio 110, REA 13.3, Rib Fat .30, Rump Fat .28, Ratio 82.
- Young dam's first calf was the Lot 26 bull in last year's sale.
- Cow family is well represented with Pathfinders in this herd and has been very effective in putting bulls to work through this sale.
- Recommended for heifers.

### Weeks Angus **4** WAF Final Answer 405

**LOT 4** Born: 02/04/14 17966983 Tattoo: 405 Bull  
 Sitz Traveler 8180 # G D A R Traveler 71 #  
**S A V Final Answer 0035 #** Sitz Everelda Entense 1137  
**13592905** S A V Emulous 8145 Bon View Bando 598 [ CAC ] #  
 S A V Sky Emulous 2124  
 TC One Way 8159 TC One Way 618 #  
**W A F Barmiss W013** TC Marcia 9069 #  
**16793514** Weeks Barmiss W804 S A V 8180 Traveler 004 #  
 Weeks' Barmiss W153

PRODUCTION EPDs				MATERNAL EPDs			\$ VALUES					
CED	BW	WW	YW	CEM	Milk	\$EN	\$W	\$F	\$G	\$B		
+7	+0.9	+53	+90	+12	+25	-13.75	+42.98	+38.86	+32.09	+61.64		
CARCASS	CW	+13	.19	MARB	+63	.23	REA	+23	.23	FAT	+0.54	.21

- Individual Performance: BW 67 lbs, BWR 86, 205 Wt. 745 lbs, WWR 102, 365 Wt. 1081 lbs, YWR 89. Scrotal Measurement: 35.4 cm.
- Dam's Production: 2 NR 104. She posts 2 @ IMF 114, Rump Fat 84.
- Adjusted Ultrasound Scan Data: %IMF 4.53, Ratio 132, REA 12.2, Ratio 89, Rib Fat .24, Ratio 89, Rump Fat .21, Ratio 70.
- Posts a top five \$W in this year's sale. He is also tied for third best actual BW.
- Maternal grandam produced the Lot 1 feature in last year's sale. This cow family produced three other sale bulls last year alone.
- Recommended for heifers.



# WAF Irish 419

---

Lot 5

Weeks Angus  
**LOT 5 WAF Irish 419**

Born: 02/03/14 1796920 Tattoo: 419 Bull

Connealy Wrangler  
**Connealy Irish 0204**  
16761484 Black Crest of Conanga 5640 #

TC Aberdeen 759 #  
**WAF Blueblood Lady W215**  
17383363 Weeks Blueblood Lady W700 #

Connealy Cowboy  
Kelly of Conanga 577  
Mytty In Focus #  
Black Cresha of Conanga 3314  
C R A Bextor 872 5205 608 #  
TC Blackbird 4034 #  
W C C Special Design L309 #  
Weeks Lady W027

PRODUCTION EPDs				MATERNAL EPDs			\$ VALUES				
CED	BW	WW	YW	CEM	Milk	\$EN	\$W	\$F	\$G	\$B	
+11	-0.2	+53	+105	+13	+24	-21.21	+34.96	+63.09	+36.17	+110.28	
<b>CARCASS</b>	<b>CW</b>	+41	.17	<b>MARB</b>	+54	.22	<b>REA</b>	+65	.22	<b>FAT</b>	-.008 .19

- Individual Performance: BW 72 lbs, BWR 99, 205 Wt. 736 lbs, WWR 101, 365 Wt. 1288 lbs, YWR 109. Scrotal Measurement: 35.2 cm.
- Dam's Production: 1 BWR 99, 1 NR 101, 1 YR 109. She posts 1 @ IMF 107, REA 104, Rib Fat 100.
- Adjusted Ultrasound Scan Data: %IMF 3.81, Ratio 107, REA 14.2, Ratio 104, Rib Fat .22, Ratio 100, Rump Fat .47.
- Posts the 2nd best \$B value and the 4th heaviest Adj. YW in this year's sale offering.
- Maternal grandsire was the \$77,000 top selling selection from the 2008 TC Ranch offering and offers an outcross pedigree.
- Recommended for heifers

Weeks Angus  
**LOT 6 WAF Irish 418**

Born: 02/04/14 1796919 Tattoo: 418 Bull

Connealy Wrangler  
**Connealy Irish 0204**  
16761484 Black Crest of Conanga 5640 #

S A V Final Answer 0035 #  
**WAF Blueblood Lady W207**  
17383338 WAF Blueblood Lady W004

Connealy Cowboy  
Kelly of Conanga 577  
Mytty In Focus #  
Black Cresha of Conanga 3314  
Sitz Traveler 8180 #  
S A V Emulous 8145  
Mytty In Focus #  
WAF Blueblood Lady W043

PRODUCTION EPDs				MATERNAL EPDs			\$ VALUES				
CED	BW	WW	YW	CEM	Milk	\$EN	\$W	\$F	\$G	\$B	
+11	+0.1	+52	+98	+13	+23	-15.36	+36.72	+52.25	+38.92	+105.69	
<b>CARCASS</b>	<b>CW</b>	+36	.18	<b>MARB</b>	+67	.22	<b>REA</b>	+48	.23	<b>FAT</b>	-.005 .20

- Individual Performance: BW 75 lbs, BWR 102, 205 Wt. 759 lbs, WWR 104, 365 Wt. 1231 lbs, YWR 104. Scrotal Measurement: 33.2 cm.
- Dam's Production: 1 NR 104, 1 YR 104. She posts 1 @ IMF 119, Rump Fat 87.
- Adjusted Ultrasound Scan Data: %IMF 4.25, Ratio 119, REA 12.9, Rib Fat .23, Rump Fat .26, Ratio 87.
- Foundation 3rd dam produced the Lot 38 heifer in the 2014 offering.
- Here is another cow family that is well represented with Pathfinders in this herd and it produces plenty of sale entries as well.
- Recommended for heifers.

Weeks Angus  
**LOT 7 WAF Irish 421**

Born: 02/05/14 17966922 Tattoo: 421 Bull

Connealy Wrangler  
**Connealy Irish 0204**  
16761484 Black Crest of Conanga 5640 #

TC Aberdeen 759 #  
**WAF Barmiss W218**  
17383375 Weeks Barmiss W704

Connealy Cowboy  
Kelly of Conanga 577  
Mytty In Focus #  
Black Cresha of Conanga 3314  
C R A Bextor 872 5205 608 #  
TC Blackbird 4034 #  
Lemmon Newsline C804 #  
Weeks' Barmiss W153

PRODUCTION EPDs				MATERNAL EPDs			\$ VALUES				
CED	BW	WW	YW	CEM	Milk	\$EN	\$W	\$F	\$G	\$B	
+13	-1.7	+49	+87	+14	+23	-9.01	+41.32	+36.58	+41.99	+104.89	
<b>CARCASS</b>	<b>CW</b>	+34	.17	<b>MARB</b>	+55	.22	<b>REA</b>	+80	.22	<b>FAT</b>	-.042 .19

- Individual Performance: BW 61 lbs, BWR 85, 205 Wt. 728 lbs, WWR 100, 365 Wt. 1120 lbs, YWR 95. Scrotal Measurement: 34.2 cm.
- Dam's Production: 1 BWR 85, 1 NR 100. She posts 1 @ IMF 119, REA 103, Rib Fat 95, Rump Fat 73.
- Adjusted Ultrasound Scan Data: %IMF 4.24, Ratio 119, REA 14.0, Ratio 103, Rib Fat .21, Ratio 95, Rump Fat .22, Ratio 73.
- Records the second best actual BW in the sale offering.
- Paternal brother to the dam from this same cow family was the Lot 1 feature in the last sale offering.
- Maternal grandam has produced no less than three replacement heifers as well as Lot 24 in the 2014 sale.
- Recommended for heifers.

Weeks Angus  
**LOT 8 WAF Hoover Dam 438**

Born: 02/05/14 17966934 Tattoo: 438 Bull

SydGen C C & 7 #  
**Hoover Dam #**  
16124994 Erica of Ellston C124 #

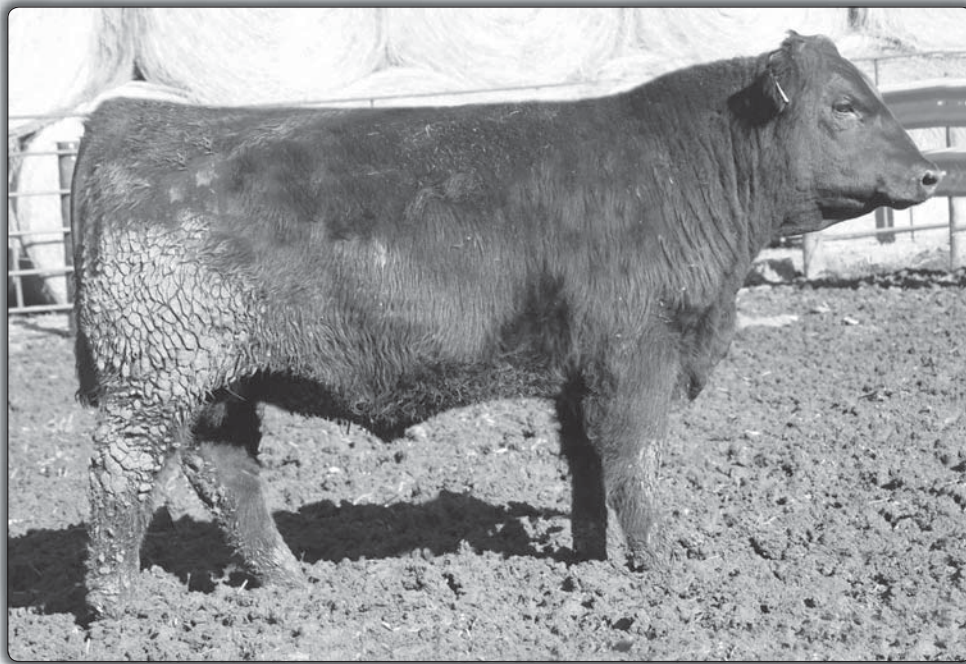
New Design V505 [ DDP ]  
**Weeks Lady W819 #**  
16144316 Weeks Lady W610

S A F Connection #  
SydGen Forever Lady 4087  
TC Gridiron 258 #  
Erica of Ellston V65  
Toebben New Design 2093 [ DDP ]  
Babette V854  
Bon View New Design 878 #  
C F L Lifter 4008

PRODUCTION EPDs				MATERNAL EPDs			\$ VALUES				
CED	BW	WW	YW	CEM	Milk	\$EN	\$W	\$F	\$G	\$B	
+11	-1.6	+41	+73	+10	+24	-2.96	+37.92	+19.89	+37.50	+74.27	
<b>CARCASS</b>	<b>CW</b>	+18	.19	<b>MARB</b>	+43	.23	<b>REA</b>	+66	.23	<b>FAT</b>	-.028 .20

- Individual Performance: BW 73 lbs, BWR 87, 205 Wt. 676 lbs, WWR 97, 365 Wt. 1146 lbs, YWR 95. Scrotal Measurement: 39.2 cm.
- Dam's Production: 5 BWR 98, 5 NR 102, 2 YR 103. Calving Interval 5 @ 355 days. She posts REA 104, Rib Fat 100, Rump Fat 85.
- Adjusted Ultrasound Scan Data: %IMF 3.03, REA 14.4, Ratio 104, Rib Fat .28, Ratio 100, Rump Fat .31, Ratio 91.
- Tied for fifth largest ribeye area in the sale offering.
- Pathfinder mating here resulting in this early February bull.
- Maternal grandam brought the Lot 35 heifer in for the 2013 Weeks Angus Farm offering.
- Recommended for heifers.





# WAF Right Answer 441

Lot 9

## Weeks Angus **LOT 9 WAF Right Answer 441**

Born: 02/09/14 17966945 Tattoo: 441 Bull

S A V Final Answer 0035 #  
**Connealy Right Answer 746 #**  
 15832750 Happy Dell of Conanga 262

Mytty In Focus #  
**Weeks Barmiss W909**  
 16511661 Weeks Barmiss W704

Sitz Traveler 8180 #  
 S A V Emulous 8145  
 Hyline Right Time 338 #  
 Happy Daze of Conanga 6260  
 S A F Focus of E R #  
 Mytty Countess 906  
 Lemmon Newslime C804 #  
 Weeks' Barmiss W153

PRODUCTION EPDs				MATERNAL EPDs			\$ VALUES					
CED	BW	WW	YW	CEM	Milk	\$EN	\$W	\$F	\$G	\$B		
+13	-1.6	+57	+94	+13	+24	-14.46	+49.37	+42.72	+37.25	+84.10		
<b>CARCASS</b>	<b>CW</b>	+23	.21	<b>MARB</b>	+74	.25	<b>REA</b>	+05	.25	<b>FAT</b>	+001	.22

- Individual Performance: BW 76 lbs, BWR 87, 205 Wt. 764 lbs, WWR 105, 365 Wt. 1182 lbs, YWR 98. Scrotal Measurement: 38.4 cm.
- Dam's Production: 3 BWR 85, 3 NR 98. Calving Interval 4 @ 367 days. She posts 3 @ IMF 123, Rump Fat 95.
- Adjusted Ultrasound Scan Data: %IMF 5.43, Ratio 159, REA 12.4, Ratio 90, Rib Fat .27, Ratio 100, Rump Fat .36.
- This bull records the highest \$W and %IMF in the sale offering.
- One maternal brother was Lot 30 in last year's sale and another was selected by John Henrich of Thayer in the 2013 edition.
- Recommended for heifers.

## Weeks Angus **LOT 11 WAF Irish 422**

Born: 02/08/14 17966923 Tattoo: 422 Bull

Connealy Wrangler  
**Connealy Irish 0204**  
 16761484 Black Crest of Conanga 5640 #

TC Aberdeen 759 #  
**W A F Lady W229**  
 17383392 Weeks Lady W819 #

Connealy Cowboy  
 Kelly of Conanga 577  
 Mytty In Focus #  
 Black Cresha of Conanga 3314  
 C R A Bextor 872 5205 608 #  
 TC Blackbird 4034 #  
 New Design V505 [ DDP ]  
 Weeks Lady W610

PRODUCTION EPDs				MATERNAL EPDs			\$ VALUES					
CED	BW	WW	YW	CEM	Milk	\$EN	\$W	\$F	\$G	\$B		
+3	+2.0	+50	+98	+7	+25	-19.11	+30.75	+53.50	+37.39	+108.02		
<b>CARCASS</b>	<b>CW</b>	+39	.17	<b>MARB</b>	+53	.21	<b>REA</b>	+64	.22	<b>FAT</b>	-022	.19

- Individual Performance: BW 88 lbs, 205 Wt. 766 lbs, WWR 105, 365 Wt. 1280 lbs, YWR 108. Scrotal Measurement: 35.8 cm.
- Dam's Production: 1 NR 105, 1 YR 108. She posts 1 @ IMF 111.
- Adjusted Ultrasound Scan Data: %IMF 3.97, Ratio 111, REA 13.5, Rib Fat .25, Rump Fat .36.
- Records the third highest \$B and fifth heaviest Adj. YW in this sale group.
- Maternal grandam is double bred to the breed legend "036."
- Foundation 3rd dam is an own daughter of the Pathfinder "878" and produced the Lot 23 bull last year

## Weeks Angus **LOT 10 WAF Irish 417**

Born: 02/06/14 17966918 Tattoo: 417 Bull

Connealy Wrangler  
**Connealy Irish 0204**  
 16761484 Black Crest of Conanga 5640 #

TC One Way 8159  
**W A F Zara W203**  
 17383332 Weeks' Zara W382

Connealy Cowboy  
 Kelly of Conanga 577  
 Mytty In Focus #  
 Black Cresha of Conanga 3314  
 TC One Way 618 #  
 TC Marcia 9069 #  
 Stock Right W962  
 Weeks Zara W864

PRODUCTION EPDs				MATERNAL EPDs			\$ VALUES					
CED	BW	WW	YW	CEM	Milk	\$EN	\$W	\$F	\$G	\$B		
+4	+2.7	+47	+86	+9	+23	-9.43	+29.42	+36.23	+32.58	+98.24		
<b>CARCASS</b>	<b>CW</b>	+36	.15	<b>MARB</b>	+42	.20	<b>REA</b>	+47	.20	<b>FAT</b>	-030	.17

- Individual Performance: BW 84 lbs, 205 Wt. 767 lbs, WWR 105, 365 Wt. 1185 lbs, YWR 100. Scrotal Measurement: 38.8 cm.
- Dam's Production: 1 NR 105, 1 YR 100. She posts 1 @ REA 104, Rump Fat 73.
- Adjusted Ultrasound Scan Data: %IMF 3.20, REA 14.2, Ratio 104, Rib Fat .23, Rump Fat .22, Ratio 73.
- Posts the 5th heaviest Adj. WW among sale bulls this year.
- Foundation 3rd dam is sired by the Pathfinder TC Dividend 963 and appears as a cornerstone in numerous sale pedigrees in the recent past for this program.

## Weeks Angus **LOT 12 WAF Bullseye 432**

Born: 02/08/14 17966954 Tattoo: 432 Bull

MOGCK Sure Shot  
**Mogck Bullseye**  
 17102085 Mogck Mary 1255

New Design V505 [ DDP ]  
**Weeks Barmiss W716**  
 15875266 W A F Bar Miss 5111 [ NHC ]

Mytty In Focus #  
 Mogck Black Lass 2065  
 K C F Bennett Coalition SCC #  
 Mogck Mary C 1757 [ CAP-DDP ]  
 Toebben New Design 2093 [ DDP ]  
 Babette V854  
 C A Future Direction 5321 [ AMC-NHC ] #  
 Weeks' Barmiss W1J1

PRODUCTION EPDs				MATERNAL EPDs			\$ VALUES					
CED	BW	WW	YW	CEM	Milk	\$EN	\$W	\$F	\$G	\$B		
+3	+1.7	+54	+90	+8	+25	-14.39	+42.14	+38.25	+30.78	+78.85		
<b>CARCASS</b>	<b>CW</b>	+24	.13	<b>MARB</b>	+39	.19	<b>REA</b>	+42	.19	<b>FAT</b>	-009	.15

- Individual Performance: BW 84 lbs, BWR 100, 205 Wt. 675 lbs, WWR 97, 365 Wt. 1153 lbs, YWR 96. Scrotal Measurement: 37.3 cm.
- Dam's Production: 6 BWR 97, 6 NR 101. Calving Interval 6 @ 367 days. She posts 5 @ REA 101, Rib Fat 87, Rump Fat 79.
- Adjusted Ultrasound Scan Data: %IMF 2.83, REA 12.4, Rib Fat .18, Ratio 64, Rump Fat .23, Ratio 68.
- Sire was selected by Hoover Angus, Accelerated Genetics and KDS Angus for a jaw dropping \$192,000.
- Maternal brother was Lot 11 last year. He posted the lowest BW EPD as well as the 3rd best ribeye area.



# WAF Final Answer 406

Lot 13

## LOT 13 WAF Final Answer 406

Born: 02/05/14 17966960 Tattoo: 406 Bull

Sitz Traveler 8180 #  
**S A V Final Answer 0035 #**  
**13592905** S A V Emulous 8145  
 D A E S R O Crossover 7202 910 [ NHC ]  
**W A F Queen Alice W014**  
**16793534** Weeks Queen Alice W603  
 G D A R Traveler 71 #  
 Sitz Everelda Entense 1137  
 Bon View Bando 598 [ CAC ] #  
 S A V Sky Emulous 2124  
 B T Crossover 758N #  
 Rito Maid 0810  
 Lemmon Newline C804 #  
 W A F Queen Alice W254

PRODUCTION EPDs				MATERNAL EPDs			\$ VALUES				
CED	BW	WW	YW	CEM	Milk	SEN	\$W	\$F	\$G	\$B	
+9	+0.4	+53	+88	+10	+24	-10.70	+44.58	+35.72	+30.20	+68.02	
<b>CARCASS</b>	<b>CW</b>	+18	.19	<b>MARB</b>	+44	.23	<b>REA</b>	+77	.23	<b>FAT</b>	+065 .21

- Individual Performance: BW 80 lbs, BWR 93, 205 Wt. 772 lbs, WWR 106, 365 Wt. 1254 lbs, YWR 104. Scrotal Measurement: 35.9 cm.
- Dam's Production: 3 NR 102. Calving Interval 3 @ 362 days. She posts 2 @ REA 107.
- Adjusted Ultrasound Scan Data: %IMF 3.42, Ratio 100, REA 16.1, Ratio 117, Rib Fat .49, Rump Fat .47.
- Posts the top UREA, 3rd heaviest Adj. WW and the 4th best \$W of the sale offering.
- Maternal grandam and foundation 3rd dam appeared up close in the pedigrees of three sale features in last year's offering alone.
- Recommended for heifers.

## LOT 15 WAF Irish 423

Born: 02/11/14 17966924 Tattoo: 423 Bull

Connealy Wrangler  
**Connealy Irish 0204**  
**16761484** Black Crest of Conanga 5640 #  
 SydGen C C & 7 #  
**W A F Evening Tinge W232**  
**17383400** Weeks Evening Tinge W906  
 Connealy Cowboy  
 Kelly of Conanga 577  
 Mytty In Focus #  
 Black Cresha of Conanga 3314  
 S A F Connection #  
 SydGen Forever Lady 4087  
 Bon View New Design 878 #  
 Weeks Evening Tinge W609 [ CAP-DDP ]

PRODUCTION EPDs				MATERNAL EPDs			\$ VALUES				
CED	BW	WW	YW	CEM	Milk	SEN	\$W	\$F	\$G	\$B	
+11	-0.7	+51	+100	+13	+26	-21.56	+36.89	+56.13	+34.18	+114.91	
<b>CARCASS</b>	<b>CW</b>	+47	.18	<b>MARB</b>	+42	.22	<b>REA</b>	+66	.22	<b>FAT</b>	-046 .19

- Individual Performance: BW 69 lbs, BWR 95, 205 Wt. 755 lbs, WWR 103, 365 Wt. 1233 lbs, YWR 104. Scrotal Measurement: 36.4 cm.
- Dam's Production: 1 BWR 95, 1 NR 103, 1 YR 104. She posts 1 @ REA 104, Rib Fat 100.
- Adjusted Ultrasound Scan Data: %IMF 3.24, REA 14.2, Ratio 104, Rib Fat .22, Ratio 100, Rump Fat .34.
- Posts the best \$B value as well as the 4th lowest actual birth weight in this sale.
- This first calf heifer posted an individual BWR of 98 and WWR of 106, this along with her exceptional pedigree earned her replacement status quickly.
- This cow family was responsible for the featured and top selling female in the 2013 sale.
- Recommended for heifers.

## LOT 14 WAF Irish 407

Born: 02/09/14 17966926 Tattoo: 407 Bull

Connealy Wrangler  
**Connealy Irish 0204**  
**16761484** Black Crest of Conanga 5640 #  
 Stock Right W962  
**W A F Blueblood Lady 5127**  
**15212423** Blueblood Lady Ellston N10  
 Connealy Cowboy  
 Kelly of Conanga 577  
 Mytty In Focus #  
 Black Cresha of Conanga 3314  
 T C Stockman 365 #  
 Blossom V603 #  
 Bon View Paragon 2121 #  
 Blueblood Lady Ellston L727 #

PRODUCTION EPDs				MATERNAL EPDs			\$ VALUES				
CED	BW	WW	YW	CEM	Milk	SEN	\$W	\$F	\$G	\$B	
+0	+5.0	+52	+103	+6	+23	-19.10	+18.97	+60.42	+27.25	+107.20	
<b>CARCASS</b>	<b>CW</b>	+46	.15	<b>MARB</b>	+36	.20	<b>REA</b>	+46	.20	<b>FAT</b>	-019 .17

- Individual Performance: BW 92 lbs, BWR 110, 205 Wt. 769 lbs, WWR 111, 365 Wt. 1422 lbs, YWR 119. Scrotal Measurement: 35.3 cm.
- Dam's Production: 8 NR 105, 2 YR 119. Calving Interval 8 @ 359 days. She posts 2 @ REA 104.
- Adjusted Ultrasound Scan Data: %IMF 3.29, REA 14.8, Ratio 107, Rib Fat .27, Ratio 96, Rump Fat .43.
- Posts the heaviest Adj. YW, 4th top Adj. WW and UREA as well as the 5th highest \$B in this offering.
- This cow family produced 5 entries in last year's sale, "N10" appeared as grandam or foundation 3rd dam in four of those.
- Pathfinder maternal sister to "407" produced the 2nd top selling female in the 2013 sale.

## LOT 16 WAF Hoover Dam 429

Born: 02/11/14 17966936 Tattoo: 429 Bull

SydGen C C & 7 #  
**Hoover Dam #**  
**16124994** Erica of Ellston C124 #  
 W C C Special Design L309 #  
**Weeks Blueblood Lady W700 #**  
**15875251** Weeks Lady W027  
 S A F Connection #  
 SydGen Forever Lady 4087  
 T C Gridiron 258 #  
 Erica of Ellston V65  
 Bon View New Design 878 [ DDC ] #  
 N Bar Primrose 2424  
 Whitestone Fly Traveler 3006 #  
 Blueblood Lady Ellston N10

PRODUCTION EPDs				MATERNAL EPDs			\$ VALUES				
CED	BW	WW	YW	CEM	Milk	SEN	\$W	\$F	\$G	\$B	
+7	+1.2	+48	+84	+11	+23	-8.02	+36.65	+32.52	+38.07	+84.03	
<b>CARCASS</b>	<b>CW</b>	+23	.21	<b>MARB</b>	+65	.25	<b>REA</b>	+40	.25	<b>FAT</b>	+010 .22

- Individual Performance: BW 82 lbs, BWR 98, 205 Wt. 705 lbs, WWR 102, 365 Wt. 1169 lbs, YWR 98. Scrotal Measurement: 36.4 cm.
- Dam's Production: 6 BWR 95, 6 NR 105. Calving Interval 6 @ 363 days. She posts 3 @ IMF 121.
- Adjusted Ultrasound Scan Data: %IMF 4.38, Ratio 121, REA 12.8, Rib Fat .37, Rump Fat .49.
- Pathfinder mating here that brings together "CC&7" with "878" up close in this pedigree.
- Full brother was the Lot 4 feature last year that posted the 2nd highest %IMF as well as 2nd lowest BW and BW EPD.
- Recommended for heifers.





# WAF Bullseye 425

Lot 17

## Weeks Focus **LOT 17 WAF Bullseye 425**

Born: 02/02/14 17971936 Tattoo: 425 Bull

MOGCK Sure Shot  
**Mogck Bullseye**  
 17102085 Mogck Mary 1255  
 Lemmon Newline C804 #  
**Weeks Queen Alice W603**  
 15469323 W A F Queen Alice W254

Mytty In Focus #  
 Mogck Black Lass 2065  
 K C F Bennett Coalition SCC #  
 Mogck Mary C 1757 [ CAP-DDP ]  
 B/R New Design 036 [ DDC ] #  
 White Fence Pride H1  
 Stock Right W962  
 Queen Alice V553

PRODUCTION EPDs				MATERNAL EPDs			\$ VALUES					
CED	BW	WW	YW	CEM	Milk	\$EN	\$W	\$F	\$G	\$B		
+4	+1.7	+59	+97	+9	+26	-19.90	+45.95	+46.27	+29.28	+90.12		
<b>CARCASS</b>	<b>CW</b>	+32	.15	<b>MARB</b>	+31	.20	<b>REA</b>	+62	.21	<b>FAT</b>	-0.19	.17

- Individual Performance: BW 74 lbs, BWR 88, 205 Wt. 706 lbs, WWR 102, 365 Wt. 1167 lbs, YWR 98. Scrotal Measurement: 35.1 cm.
- Dam's Production: 6 BWR 97, 6 NR 102. Calving Interval 7 @ 362 days.
- Adjusted Ultrasound Scan Data: %IMF 2.45, REA 13.8, Ratio 100, Rib Fat .16, Ratio 57, Rump Fat .24, Ratio 71.
- Records the second best \$W value in this year's sale.
- Dam produced five consecutive heifers and now is two for two on sale bulls, producing Lot 17 last year as well.
- Sire was the talk of the 2012, selling for a season topping \$192,000.

## Weeks Focus **LOT 19 WAF Irish 440**

Born: 02/12/14 17966933 Tattoo: 440 Bull

Connealy Wrangler  
**Connealy Irish 0204**  
 16761484 Black Crest of Conanga 5640 #  
 Bon View New Design 878 #  
**Weeks Evening Tinge W906**  
 16511658 Weeks Evening Tinge W609

Connealy Cowboy  
 Kelly of Conanga 577  
 Mytty In Focus #  
 Black Cresha of Conanga 3314  
 B/R New Design 036 [ DDC ] #  
 Bon View Gammer 85 [ CAC ]  
 B A Freedom 404  
 Evening Tinge W312 [ CAP-DDP ]

PRODUCTION EPDs				MATERNAL EPDs			\$ VALUES					
CED	BW	WW	YW	CEM	Milk	\$EN	\$W	\$F	\$G	\$B		
+9	+1.0	+43	+87	+13	+23	-9.81	+27.98	+40.23	+35.93	+104.22		
<b>CARCASS</b>	<b>CW</b>	+38	.18	<b>MARB</b>	+48	.22	<b>REA</b>	+50	.22	<b>FAT</b>	-0.42	.19

- Individual Performance: BW 85 lbs, 205 Wt. 685 lbs, WWR 99, 365 Wt. 1207 lbs, YWR 101. Scrotal Measurement: 39.0 cm.
- Dam's Production: 3 NR 105, 2 YR 109. Calving Interval 3 @ 367 days. She posts 2 @ REA 113.
- Adjusted Ultrasound Scan Data: %IMF 3.81, Ratio 106, REA 14.2, Ratio 103, Rib Fat .18, Ratio 64, Rump Fat .22, Ratio 65.
- Maternal brother was the Lot 29 feature in last year's sale who posted the 3rd heaviest 205 day weight, 2nd heaviest 365 day weight and largest ribeye area.
- Maternal sister has been retained as a replacement.
- Recommended for heifers.

## Weeks Focus **LOT 18 WAF Irish 416**

Born: 02/12/14 17966917 Tattoo: 416 Bull

Connealy Irish 0204  
**TC Irish 2117**  
 17398361 TC Erica Eileen 6055 #  
 LaGrand Final Answer 9065  
**W A F Queen Alice W120**  
 17143789 Weeks Queen Alice W905 [ DDP ]

Connealy Wrangler  
 Black Crest of Conanga 5640 #  
 TC Friction 3275  
 TC Erica Eileen 3072 #  
 S A V Final Answer 0035 #  
 LaGrand Forever Lady 4048  
 New Design V505 [ DDP ]  
 Weeks Queen Alice W603

PRODUCTION EPDs				MATERNAL EPDs			\$ VALUES					
CED	BW	WW	YW	CEM	Milk	\$EN	\$W	\$F	\$G	\$B		
+8	-0.1	+50	+90	+12	+25	-14.07	+39.87	+40.69	+39.12	+99.19		
<b>CARCASS</b>	<b>CW</b>	+32	.08	<b>MARB</b>	+70	.14	<b>REA</b>	+44	.13	<b>FAT</b>	+0.03	.11

- Individual Performance: BW 67 lbs, BWR 83, 205 Wt. 714 lbs, WWR 103, 365 Wt. 1232 lbs, YWR 103. Scrotal Measurement: 37.9 cm.
- Dam's Production: 2 BWR 91, 2 NR 101, 1 YR 103. Calving Interval 2 @ 358 days. She posts 1 @ IMF 135.
- Adjusted Ultrasound Scan Data: %IMF 4.88, Ratio 135, REA 13.4, Rib Fat .31, Rump Fat .37.
- Posts the second best %IMF and is tied for 3rd lowest actual birth weight in the sale.
- Dam produced the Lot 44 heifer in last year's sale as the result of her first weaning.
- Maternal grandsire has established himself as the premier growth rate sire in the Week's program.
- Recommend for heifers.

## Weeks Focus **LOT 20 WAF Hoover Dam 431**

Born: 02/14/14 17966937 Tattoo: 431 Bull

SydGen C C & 7 #  
**Hoover Dam #**  
 16124994 Erica of Ellston C124 #  
 S A V 8180 Traveler 004 #  
**Weeks Lady W710**  
 15875261 C F L Lifter 4008

S A F Connection #  
 SydGen Forever Lady 4087  
 TC Gridiron 258 #  
 Erica of Ellston V65  
 Sitz Traveler 8180 #  
 Boyd Forever Lady 8003  
 CFL Weightlifter Pride 1254  
 Lone Lady 08

PRODUCTION EPDs				MATERNAL EPDs			\$ VALUES					
CED	BW	WW	YW	CEM	Milk	\$EN	\$W	\$F	\$G	\$B		
+7	+0.7	+44	+75	+10	+22	-0.77	+36.68	+21.14	+40.72	+85.87		
<b>CARCASS</b>	<b>CW</b>	+23	.21	<b>MARB</b>	+58	.24	<b>REA</b>	+70	.25	<b>FAT</b>	-0.07	.22

- Individual Performance: BW 80 lbs, BWR 92, 205 Wt. 702 lbs, WWR 96, 365 Wt. 1132 lbs, YWR 93. Scrotal Measurement: 40.0 cm.
- Dam's Production: 5 BWR 95, 5 NR 98. Calving Interval 6 @ 360 days. She posts 1 @ IMF 142, REA 104, Rib Fat 85.
- Adjusted Ultrasound Scan Data: %IMF 4.84, Ratio 142, REA 14.4, Ratio 104, Rib Fat .23, Ratio 85, Rump Fat .33.
- Posts the 4th best %IMF and is tied for 5th largest UREA in this offering.
- Maternal sisters to both the dam and maternal granddam had offspring in the 2013 sale.
- Full sister to the dam produced Lot 34 in the heifer division in the 2013 Weeks offering.
- Recommended for heifers.





**WAF Irish  
401**  
Lot 21

**LOT 21** *Webb Angus* **WAF Irish 401**  
Born: 02/10/14 17966925 Tattoo: 401 Bull

Connealy Wrangler  
**Connealy Irish 0204**  
16761484 Black Crest of Conanga 5640 #  
S A V 8180 Traveler 004 #  
**W A F Eline W001**  
16793496 W A F Eline W041  
Connealy Cowboy  
Kelly of Conanga 577  
Mytty In Focus #  
Black Cresha of Conanga 3314  
Sitz Traveler 8180 #  
Boyd Forever Lady 8003  
Stock Right W962  
Weeks Eline W080 [ CAP-DDP ] #

PRODUCTION EPDs				MATERNAL EPDs				\$ VALUES				
CED	BW	WW	YW	CEM	Milk	\$EN	\$W	\$F	\$G	\$B		
+7	+1.5	+53	+99	+10	+22	-14.78	+34.29	+53.24	+30.54	+107.65		
<b>CARCASS</b>	<b>CW</b>	+44	.18	<b>MARB</b>	+45	.22	<b>REA</b>	+42	.22	<b>FAT</b>	-.017	.19

- Individual Performance: BW 83 lbs, BWR 97, 205 Wt. 764 lbs, WWR 105, 365 Wt. 1263 lbs, YWR 104. Scrotal Measurement: 36.5 cm.
- Dam's Production: 3 NR 100, 2 YR 108. Calving Interval 3 @ 357 days. She posts 2 @ REA 103, Rib Fat 82, Rump Fat 82.
- Adjusted Ultrasound Scan Data: %IMF 3.89, Ratio 114, REA 13.6, Rib Fat .20, Ratio 74, Rump Fat .24, Ratio 80.
- Posts the 4th best \$B value in the sale offering.
- Maternal brother was Lot 16 in last year's sale and posted the highest WW EPD and the 2nd highest YW EPD.
- Recommended for heifers.

**LOT 22** *Webb Angus* **WAF One Way 430**  
Born: 02/19/14 17966911 Tattoo: 430 Bull

TC One Way 618 #  
**TC One Way 8159**  
16150352 TC Marcia 9069 #  
Lemmon Newline C804 #  
**Weeks Barmiss W704**  
15875255 Weeks' Barmiss W153  
Rito 112 of 2536 Rito 616 #  
TC Quality 7122  
War Command 7131 3247 #  
TC Marcia 6171 #  
B/R New Design 036 [ DDC ] #  
White Fence Pride H1  
Stock Right W962  
Weeks Barmiss W553

PRODUCTION EPDs				MATERNAL EPDs				\$ VALUES				
CED	BW	WW	YW	CEM	Milk	\$EN	\$W	\$F	\$G	\$B		
+1	+3.1	+40	+68	+9	+23	+0.02	+27.42	+13.03	+28.48	+71.87		
<b>CARCASS</b>	<b>CW</b>	+22	.10	<b>MARB</b>	+48	.16	<b>REA</b>	+13	.16	<b>FAT</b>	+0.017	.13

- Individual Performance: BW 89 lbs, BWR 106, 205 Wt. 692 lbs, WWR 100, 365 Wt. 1185 lbs, YWR 99. Scrotal Measurement: 39.6 cm.
- Dam's Production: 5 BWR 96, 5 NR 102, 3 YR 101. Calving Interval 6 @ 367 days. She posts 4 @ IMF 107, Rib Fat 97, Rump Fat 83.
- Adjusted Ultrasound Scan Data: %IMF 4.12, Ratio 114, REA 13.3, Rib Fat .40, Rump Fat .50.
- Dam had twin heifers returned to the herd in 2013 as well as her first heifer.
- Maternal brother was Lot 24 in the 2014 offering and two other maternal brothers have gone to work for Benschhof Farms of Winterset, IA and Tom Christensen of Van Meter, IA.

**LOT 23** *Webb Angus* **WAF Hoover Dam 439**  
Born: 02/19/14 17966935 Tattoo: 439 Bull

SydGen C C & 7 #  
**Hoover Dam #**  
16124994 Erica of Ellston C124 #  
S A V 8180 Traveler 004 #  
**Weeks Erica W901**  
16511651 Weeks Erica W089 #  
S A F Connection #  
SydGen Forever Lady 4087  
TC Gridiron 258 #  
Erica of Ellston V65  
Sitz Traveler 8180 #  
Boyd Forever Lady 8003  
Werner Fly Traveler 458  
B J Erica Distinction 9610 #

PRODUCTION EPDs				MATERNAL EPDs				\$ VALUES				
CED	BW	WW	YW	CEM	Milk	\$EN	\$W	\$F	\$G	\$B		
+10	-0.7	+47	+87	+11	+25	-12.76	+37.75	+37.80	+27.63	+83.16		
<b>CARCASS</b>	<b>CW</b>	+29	.21	<b>MARB</b>	+35	.25	<b>REA</b>	+59	.25	<b>FAT</b>	+0.019	.23

- Individual Performance: BW 72 lbs, BWR 83, 205 Wt. 706 lbs, WWR 97, 365 Wt. 1218 lbs, YWR 101. Scrotal Measurement: 38.7 cm.
- Dam's Production: 4 BWR 98, 4 NR 99, 1 YR 101. Calving Interval 4 @ 346 days. She posts 1 @ REA 100.
- Adjusted Ultrasound Scan Data: %IMF 2.74, Ratio REA 13.8, Ratio 100, Rib Fat .31, Rump Fat .52.
- Maternal sister to the dam was responsible for Lot 2 in last year's sale.
- Maternal grandam and Foundation 3rd dam are Pathfinders.
- Recommended for heifers.

**LOT 24** *Webb Angus* **WAF Broadside 436**  
Born: 02/21/14 17966955 Tattoo: 436 Bull

MA Broadside 1334-822 #  
**TC Broadside 150 +**  
17038153 TC Marcia 1069 #  
S A V 8180 Traveler 004 #  
**Weeks Lady W805**  
16144289 W A F Lady W240  
Bon View New Design 878 #  
MA Miss Emulous 822  
Connealy Forefront #  
TC Marcia 7105  
Sitz Traveler 8180 #  
Boyd Forever Lady 8003  
Stock Right W962  
C F L Lifter 4008

PRODUCTION EPDs				MATERNAL EPDs				\$ VALUES				
CED	BW	WW	YW	CEM	Milk	\$EN	\$W	\$F	\$G	\$B		
-3	+4.4	+54	+89	+5	+20	-5.92	+30.42	+36.68	+4.19	+84.31		
<b>CARCASS</b>	<b>CW</b>	+48	.11	<b>MARB</b>	+0.0	.17	<b>REA</b>	+32	.17	<b>FAT</b>	+0.014	.15

- Individual Performance: BW 94 lbs, 205 Wt. 723 lbs, WWR 99, 365 Wt. 1209 lbs, YWR 100. Scrotal Measurement: 39.7 cm.
- Dam's Production: 5 BWR 98, 2 YR 102. Calving Interval 5 @ 354 days. She posts 2 @ REA 101, Rib Fat 100, Rump Fat 90.
- Adjusted Ultrasound Scan Data: %IMF 2.00, REA 13.5, Rib Fat .23, Ratio 85, Rump Fat .25, Ratio 83.
- Maternal grandsire is a Pathfinder and has earned a reputation for offspring with exceptional early growth, muscle and base width as well as appropriate frame size.
- "004" sired the top selling feature heifer in the 2013 offering.





**WAF Irish  
411**  
Lot 25

**LOT 25 WAF Irish 411**

Born: 02/12/14 17966930 Tattoo: 411 Bull

Connealy Irish 0204  
TC Irish 2117  
17398361 TC Erica Eileen 6055 #

TC One Way 8159  
WAF Eline W109  
17143755 Weeks Eline W611 #

Connealy Wrangler  
Black Crest of Conanga 5640 #  
TC Friction 3275  
TC Erica Eileen 3072 #  
TC One Way 618 #  
TC Marcia 9069 #  
Streams New Design 1407-3169 [ DDP ]  
WAF Eline W041 [ CAP-DDP ]

PRODUCTION EPDs				MATERNAL EPDs			\$ VALUES					
CED	BW	WW	YW	CEM	Milk	\$EN	\$W	\$F	\$G	\$B		
+5	+1.7	+45	+89	+8	+28	-19.17	+31.04	+42.17	+34.15	+100.02		
CARCASS	CW	+36	.08	MARB	+58	.14	REA	+38	.13	FAT	+0.01	.11

- Individual Performance: BW 78 lbs, BWR 96, 205 Wt. 734 lbs, WWR 106, 365 Wt. 1304 lbs, YWR 109. Scrotal Measurement: 38.4 cm.
- Dam's Production: 2 BWR 100, 2 NR 106, 1 YR 109. Calving Interval 2 @ 375 days. She posts 1 @ IMF 106, REA 100, Rib Fat 96, Rump Fat 94.
- Adjusted Ultrasound Scan Data: %IMF 3.83, Ratio 106, REA 13.8, Ratio 100, Rib Fat .27, Ratio 96, Rump Fat .32, Ratio 94.
- Posts the 3rd heaviest Adj. YW among sale bulls.
- Paternal brother to the dam from this cow family was Lot 21 feature in last year's sale that was a stand out for both growth and carcass.

**LOT 27 WAF Irish 409**

Born: 02/25/14 17966928 Tattoo: 409 Bull

Connealy Irish 0204  
TC Irish 2117  
17398361 TC Erica Eileen 6055 #

TC Aberdeen 759 #  
WAF Zara W103  
17143735 Weeks' Zara W182

Connealy Wrangler  
Black Crest of Conanga 5640 #  
TC Friction 3275  
TC Erica Eileen 3072 #  
C R A Bextor 872 5205 608 #  
TC Blackbird 4034 #  
Stock Right W962  
Weeks Zara W864

PRODUCTION EPDs				MATERNAL EPDs			\$ VALUES					
CED	BW	WW	YW	CEM	Milk	\$EN	\$W	\$F	\$G	\$B		
I+5	I+2.4	I+51	I+92	+19	I+24	-13.53	+34.26	+43.24	+39.64	+105.65		
CARCASS	CW	+36	.10	MARB	+63	.16	REA	+56	.16	FAT	-0.16	.13

- Individual Performance: BW 70 lbs, BWR 93, 205 Wt. 689 lbs, WWR 99, 365 Wt. 1271 lbs, YWR 106. Scrotal Measurement: 35.4 cm.
- Dam's Production: 1 BWR 96, 1 NR 98, YR . She posts 1 @ IMF 132, REA 100, Rib Fat 93, Rump Fat 82.
- Adjusted Ultrasound Scan Data: %IMF 4.78, Ratio 132, REA 13.8, Ratio 100, Rib Fat .26, Ratio 93, Rump Fat .28, Ratio 82.
- Posts the 5th lowest actual birth weight and 5th best %IMF scan in this offering.
- Maternal sister posted the highest \$W, 2nd highest WW and YW EPD's as well as the 3rd highest CED in last year's offering

**LOT 26 WAF Irish 408**

Born: 02/25/14 17966927 Tattoo: 408 Bull

Connealy Irish 0204  
TC Irish 2117  
17398361 TC Erica Eileen 6055 #

Connealy Right Answer 746 #  
WAF Ursula W102  
17143732 Ursula W155

Connealy Wrangler  
Black Crest of Conanga 5640 #  
TC Friction 3275  
TC Erica Eileen 3072 #  
S A V Final Answer 0035 #  
Happy Dell of Conanga 262  
Stock Right W962  
Ursula V511

PRODUCTION EPDs				MATERNAL EPDs			\$ VALUES					
CED	BW	WW	YW	CEM	Milk	\$EN	\$W	\$F	\$G	\$B		
+7	+1.3	+49	+88	+9	+23	-9.71	+36.24	+38.15	+33.48	+90.79		
CARCASS	CW	+30	.11	MARB	+53	.16	REA	+31	.16	FAT	-0.05	.13

- Individual Performance: BW 75 lbs, BWR 93, 205 Wt. 703 lbs, WWR 101, 365 Wt. 1151 lbs, YWR 96. Scrotal Measurement: 39.4 cm.
- Dam's Production: 2 BWR 95, 2 NR 101. She posts 2 @ IMF 104, Rib Fat 99, Rump Fat 90.
- Adjusted Ultrasound Scan Data: %IMF 3.64, Ratio 101, REA 12.8, Rib Fat .32, Rump Fat .29, Ratio 85.
- Dam produced the lowest actual birth weight bull in last year's offering with her first calf as Lot 7 and her maternal brother was the Lot 22 bull as well.
- Recommended for heifers.

**LOT 28 WAF Irish 414**

Born: 02/25/14 17967583 Tattoo: 414 Bull

Connealy Irish 0204  
TC Irish 2117  
17398361 TC Erica Eileen 6055 #

Connealy Right Answer 746 #  
WAF Evening Tinge W113  
17143770 Weeks Evening Tinge W801

Connealy Wrangler  
Black Crest of Conanga 5640 #  
TC Friction 3275  
TC Erica Eileen 3072 #  
S A V Final Answer 0035 #  
Happy Dell of Conanga 262  
C F A Lily's Dateline  
Evening Tinge W152 [ DDP ]

PRODUCTION EPDs				MATERNAL EPDs			\$ VALUES					
CED	BW	WW	YW	CEM	Milk	\$EN	\$W	\$F	\$G	\$B		
I+7	I+1.4	I+49	I+91	I+10	I+21	-7.81	+33.52	+42.88	+29.46	+85.66		
CARCASS	CW	+29	.10	MARB	+43	.16	REA	+30	.15	FAT	-0.01	.13

- Individual Performance: BW 79 lbs, 205 Wt. 763 lbs, WWR 110, 365 Wt. 1174 lbs, YWR 98. Scrotal Measurement: 38.4 cm.
- Dam's Production: 1 BWR 88. Calving Interval 2 @ 370 days.
- Adjusted Ultrasound Scan Data: %IMF 3.15, REA 13.4, Rib Fat .30, Rump Fat .38.
- Maternal grandam produced the opening lot in the 2013 sale heifer offering.
- Maternal grandsire is one of the most sought after calving ease bulls due to tremendous customer satisfaction, high performance and great attitudes.
- Recommended for heifers.





## WAF Hoover Dam 402

Lot 29

### WAF Hoover Dam 402

Born: 02/13/14 17966938 Tattoo: 402 Bull

SydGen C C & 7 #

Hoover Dam #

16124994 Erica of Ellston C124 #

S A V 8180 Traveler 004 #

W A F Blossom W002

16793531 W A F Blossom W590

S A F Connection #  
SydGen Forever Lady 4087  
TC Gridiron 258 #  
Erica of Ellston V65  
Sitz Traveler 8180 #  
Boyd Forever Lady 8003  
Stock Right W962  
Blossom V925 #

PRODUCTION EPDs				MATERNAL EPDs			\$ VALUES					
CED	BW	WW	YW	CEM	Milk	\$EN	\$W	\$F	\$G	\$B		
+5	+1.6	+52	+93	+10	+23	-12.44	+37.11	+44.21	+31.08	+91.63		
CARCASS	CW	+32	.21	MARB	+41	.25	REA	+49	.26	FAT	-.008	.23

- Individual Performance: BW 83 lbs, BWR 97, 205 Wt. 730 lbs, WWR 100, 365 Wt. 1253 lbs, YWR 103. Scrotal Measurement: 34.6 cm.
- Dam's Production: 2 BWR 96, 2 NR 98, 2 YR 100. Calving Interval 3 @ 355 days.
- Adjusted Ultrasound Scan Data: %IMF 3.28, REA 12.8, Rib Fat .29, Rump Fat .24, Ratio 80.
- Dam was a light birth weight female that posted individual performance of BWR 91 and a WWR of 101.
- "W002" also produced the Lot 8 bull in last year's offering.

### WAF Irish 410

Born: 02/27/14 17966929 Tattoo: 410 Bull

Connealy Irish 0204

TC Irish 2117

17398361 TC Erica Eileen 6055 #

TC Aberdeen 759 #

W A F Queen Alice W106

17143750 Weeks Queen Alice W603

Connealy Wrangler  
Black Crest of Conanga 5640 #  
TC Friction 3275  
TC Erica Eileen 3072 #  
C R A Bextor 872 5205 608 #  
TC Blackbird 4034 #  
Lemmon Newline C804 #  
W A F Queen Alice W254

PRODUCTION EPDs				MATERNAL EPDs			\$ VALUES					
CED	BW	WW	YW	CEM	Milk	\$EN	\$W	\$F	\$G	\$B		
I+6	I+1.7	I+50	I+90	I+9	I+26	-15.57	+37.45	+40.69	+42.71	+105.61		
CARCASS	CW	+34	.11	MARB	+63	.16	REA	+80	.16	FAT	-.018	.13

- Individual Performance: BW 60 lbs, BWR 81, 205 Wt. 682 lbs, WWR 98, 365 Wt. 1210 lbs, YWR 101. Scrotal Measurement: 37.9 cm.
- Dam's Production: 1 NR 100. She posts 1 @ IMF 134, REA 110, Rump Fat 76.
- Adjusted Ultrasound Scan Data: %IMF 4.85, Ratio 134, REA 15.2, Ratio 110, Rib Fat .31, Rump Fat .26, Ratio 76.
- Records the lightest actual birth weight in this year's offering and the 3rd largest UREA and %IMF.
- This branch of the cow family was responsible for 3 animals in last year's sale offering.
- Dam is a first calf heifer sired by the top selling bull from the 2008 TC Production Sale that has earned a reputation for low birth, exceptional early growth and carcass merit.

### WAF Broadside 437

Born: 02/27/14 17966908 Tattoo: 437 Bull

M A Broadside 1334-822 #

TC Broadside 150 +

17038153 TC Marcia 1069 #

PVR Lutton 605

Weeks Oakleaf W814

16144308 W A F Oakleaf W047 [ DDP ]

Bon View New Design 878 #  
MA Miss Emulous 822  
Connealy Forefront #  
TC Marcia 7105  
Exar Lutton 1831 #  
EXAR Evergreen 0334  
C F A Lily's Dateline  
W A F Oakleaf W207 [ DDP ]

PRODUCTION EPDs				MATERNAL EPDs			\$ VALUES					
CED	BW	WW	YW	CEM	Milk	\$EN	\$W	\$F	\$G	\$B		
-11	+7.0	+59	+93	+1	+24	-14.72	+28.07	+39.92	+14.92	+95.47		
CARCASS	CW	+48	.08	MARB	+18	.15	REA	+25	.14	FAT	-.008	.12

- Individual Performance: BW 108 lbs, 205 Wt. 804 lbs, WWR 110, 365 Wt. 1255 lbs, YWR 103. Scrotal Measurement: 37.4 cm.
- Dam's Production: 5 NR 103, 1 YR 103. Calving Interval 5 @ 360 days. She posts 1 @ IMF 104, REA 101, Rib Fat 74, Rump Fat 83.
- Adjusted Ultrasound Scan Data: %IMF 3.54, Ratio 104, REA 14.0, Ratio 101, Rib Fat .20, Ratio 74, Rump Fat .25, Ratio 83.
- Posts the heaviest Adj. WW of all bulls offered in this sale.
- Cow family produced three sale lots in last year's sale as well as the lead off heifer in the 2013 offering selected by Royal Cattle Co. of DeWitt, IA.

### WAF One Way 433

Born: 03/01/14 17966912 Tattoo: 433 Bull

TC One Way 618 #

TC One Way 8159

16150352 TC Marcia 9069 #

New Design V505 [ DDP ]

Weeks Blueblood Lady W717 #

15875267 W A F Blueblood Lady 5127

Rito 112 of 2536 Rito 616 #  
TC Quality 7122  
War Command 7131 3247 #  
TC Marcia 6171 #  
Toebben New Design 2093 [ DDP ]  
Babette V854  
Stock Right W962  
Blueblood Lady Ellston N10

PRODUCTION EPDs				MATERNAL EPDs			\$ VALUES					
CED	BW	WW	YW	CEM	Milk	\$EN	\$W	\$F	\$G	\$B		
-6	+5.7	+45	+77	+3	+29	-14.39	+24.27	+23.58	+23.92	+72.54		
CARCASS	CW	+25	.08	MARB	+44	.14	REA	+02	.13	FAT	+024	.10

- Individual Performance: BW 99 lbs, 205 Wt. 760 lbs, WWR 110, 365 Wt. 1259 lbs, YWR 105. Scrotal Measurement: 34.0 cm.
- Dam's Production: 6 NR 109, 3 YR 101. Calving Interval 6 @ 368 days. She posts 3 @ IMF 105, Rib Fat 88.
- Adjusted Ultrasound Scan Data: %IMF 3.46, REA 13.0, Rib Fat .25, Ratio 89, Rump Fat .46.
- Pathfinder dam is at it again. She produced the Lot 13 bull last year and the second top selling heifer in the 2013 sale.
- Foundation 3rd dam is the result of a Pathfinder mating that combines Hoover genetics and Bon View.



Weeks Angus  
**LOT 33 WAF Broadside 434**

**Born: 03/06/14**      **17967584**      **Tattoo: 434**      **Bull**  
 MA Broadside 1334-822 #  
**TC Broadside 150 +**  
**17038153** TC Marcia 1069 #  
 S A V 8180 Traveler 004 #  
**Weeks Barmiss W804**  
**16144287** Weeks' Barmiss W153

Bon View New Design 878 #  
 MA Miss Emulous 822  
 Connealy Forefront #  
 TC Marcia 7105  
 Sitz Traveler 8180 #  
 Boyd Forever Lady 8003  
 Stock Right W962  
 Weeks Barmiss W553

PRODUCTION EPDs				MATERNAL EPDs			\$ VALUES					
CED	BW	WW	YW	CEM	Milk	\$EN	\$W	\$F	\$G	\$B		
I+1	I+3.1	I+55	I+90	I+8	I+24	-12.91	+38.27	+37.64	+8.22	+87.67		
<b>CARCASS</b>	<b>CW</b>	+47	.11	<b>MARB</b>	+08	.17	<b>REA</b>	+25	.17	<b>FAT</b>	+009	.15

- Individual Performance: BW 82 lbs, 205 Wt. 719 lbs, WWR 99, 365 Wt. 1237 lbs, YWR 102. Scrotal Measurement: 40.1 cm.
- Dam's Production: 4 BWR 97, 4 NR 109, 2 YR 109. Calving Interval 5 @ 365 days. She posts 4 @ REA 101, Rib Fat 92.
- Adjusted Ultrasound Scan Data: %IMF 2.28, REA 13.8, Ratio 100, Rib Fat .19, Ratio 70, Rump Fat .30, Ratio 100.
- Twin sells as Lot 34.
- Dam produced the Lot 1 bull in last year's sale.



**WAF Final Answer 330**  
 The top-selling bull in the 2014 sale

Weeks Angus  
**LOT 34 WAF Broadside 435**

**Born: 03/06/14**      **17967585**      **Tattoo: 435**      **Bull**  
 MA Broadside 1334-822 #  
**TC Broadside 150 +**  
**17038153** TC Marcia 1069 #  
 S A V 8180 Traveler 004 #  
**Weeks Barmiss W804**  
**16144287** Weeks' Barmiss W153

Bon View New Design 878 #  
 MA Miss Emulous 822  
 Connealy Forefront #  
 TC Marcia 7105  
 Sitz Traveler 8180 #  
 Boyd Forever Lady 8003  
 Stock Right W962  
 Weeks Barmiss W553

PRODUCTION EPDs				MATERNAL EPDs			\$ VALUES					
CED	BW	WW	YW	CEM	Milk	\$EN	\$W	\$F	\$G	\$B		
I+1	I+3.1	I+55	I+90	I+8	I+24	-12.91	+38.27	+37.64	+10.64	+90.08		
<b>CARCASS</b>	<b>CW</b>	+47	.11	<b>MARB</b>	+14	.17	<b>REA</b>	+21	.17	<b>FAT</b>	+009	.15

- Individual Performance: BW 78 lbs, BWR 99, 205 Wt. 709 lbs, WWR 97, 365 Wt. 1248 lbs, YWR 103. Scrotal Measurement: 37.6 cm.
- Dam's Production: 4 BWR 97, 4 NR 109, 2 YR 109. Calving Interval 5 @ 365 days. She posts 4 @ REA 101, Rib Fat 92.
- Adjusted Ultrasound Scan Data: %IMF 2.77, REA 13.4, Rib Fat .23, Ratio 85, Rump Fat .24, Ratio 80.
- Twin sells as Lot 33.
- Maternal brother was the Lot 1 feature in last year's sale catalog.

Weeks Angus  
**LOT 36 WAF Irish 415**

**Born: 03/08/14**      **17966932**      **Tattoo: 415**      **Bull**  
 Connealy Irish 0204  
**TC Irish 2117**  
**17398361** TC Erica Eileen 6055 #  
 W A F One Way 941  
**W A F Blossom W116 [ DDC ]**  
**17143779** Weeks Blossom W808 #

Connealy Wrangler  
 Black Crest of Conanga 5640 #  
 TC Friction 3275  
 TC Erica Eileen 3072 #  
 TC One Way 618 #  
 W A F Eline W041  
 Bon View New Design 878 #  
 Weeks' Blossom W370 [ DDP ]

PRODUCTION EPDs				MATERNAL EPDs			\$ VALUES					
CED	BW	WW	YW	CEM	Milk	\$EN	\$W	\$F	\$G	\$B		
-2	+4.7	+49	+91	+5	+26	-17.08	+24.41	+42.88	+31.64	+102.89		
<b>CARCASS</b>	<b>CW</b>	+40	.09	<b>MARB</b>	+48	.14	<b>REA</b>	+38	.14	<b>FAT</b>	-014	.11

- Individual Performance: BW 95 lbs, 205 Wt. 723 lbs, WWR 104, 365 Wt. 1219 lbs, YWR 102. Scrotal Measurement: 39.7 cm.
- Dam's Production: 2 NR 106, 2 YR 106. She posts 2 @ IMF 102, REA 107, Rib Fat 95, Rump Fat 79.
- Adjusted Ultrasound Scan Data: %IMF 3.14, REA 13.8, Ratio 100, Rib Fat .19, Ratio 68, Rump Fat .25, Ratio 74.
- Maternal grandam is a Pathfinder.
- Dam produced a maternal brother who was the Lot 5 feature in the 2014 sale as her first calf.

Weeks Angus  
**LOT 35 WAF One Way 427**

**Born: 03/07/14**      **17966910**      **Tattoo: 427**      **Bull**  
 TC One Way 618 #  
**TC One Way 8159**  
**16150352** TC Marcia 9069 #  
 Streams New Design 1407-3169 [ DDP ]  
**Weeks Eline W611 #**  
**15469330** W A F Eline W041

Rito 112 of 2536 Rito 616 #  
 TC Quality 7122  
 War Command 7131 3247 #  
 TC Marcia 6171 #  
 Bon View New Design 1407 [ DDC ] #  
 Streams Visa Lass 169  
 Stock Right W962  
 Weeks Eline W080 [ CAP-DDP ] #

PRODUCTION EPDs				MATERNAL EPDs			\$ VALUES					
CED	BW	WW	YW	CEM	Milk	\$EN	\$W	\$F	\$G	\$B		
+1	+2.9	+39	+72	+6	+26	-7.02	+26.24	+19.55	+26.64	+73.48		
<b>CARCASS</b>	<b>CW</b>	+24	.08	<b>MARB</b>	+36	.14	<b>REA</b>	+44	.14	<b>FAT</b>	+023	.11

- Individual Performance: BW 85 lbs, 205 Wt. 695 lbs, WWR 100, 365 Wt. 1175 lbs, YWR 98. Scrotal Measurement: 36.2 cm.
- Dam's Production: 7 NR 102, 2 YR 102. Calving Interval 7 @ 370 days. She posts 4 @ IMF 109, REA 110.
- Adjusted Ultrasound Scan Data: %IMF 2.66, REA 15.9, Ratio 115, Rib Fat .29, Rump Fat .35.
- Posts the second best UREA among this year's sale bulls.
- Pathfinder dam produced the Lot 21 sale feature last year. She has also produced two replacement females that boast a combined nursing ratio of 107.
- Pathfinders and sale features are a common theme throughout this cow family.

Weeks Angus  
**LOT 37 WAF Irish 420**

**Born: 02/02/14**      **17966921**      **Tattoo: 420**      **Bull**  
 Connealy Wrangler  
**Connealy Irish 0204**  
**16761484** Black Crest of Conanga 5640 #  
 TC Aberdeen 759 #  
**W A F Barmiss W217**  
**17383374** Weeks Barmiss W704

Connealy Cowboy  
 Kelly of Conanga 577  
 Mytty In Focus #  
 Black Cresha of Conanga 3314  
 C R A Bextor 872 5205 608 #  
 TC Blackbird 4034 #  
 Lemmon Newsline C804 #  
 Weeks' Barmiss W153

PRODUCTION EPDs				MATERNAL EPDs			\$ VALUES					
CED	BW	WW	YW	CEM	Milk	\$EN	\$W	\$F	\$G	\$B		
+12	-0.6	+44	+80	+13	+22	-4.09	+35.29	+28.74	+31.92	+88.59		
<b>CARCASS</b>	<b>CW</b>	+30	.17	<b>MARB</b>	+30	.22	<b>REA</b>	+69	.22	<b>FAT</b>	-044	.19

- Individual Performance: BW 67 lbs, BWR 93, 205 Wt. 669 lbs, WWR 92, 365 Wt. 1029 lbs, YWR 87. Scrotal Measurement: 37.6 cm.
- Dam's Production: 1 BWR 93.
- Adjusted Ultrasound Scan Data: %IMF 2.25, REA 12.5, Rib Fat .19, Ratio 86, Rump Fat .22, Ratio 73.
- Tied for the 3rd best actual birth weight in the sale offering.
- Another cow family that has had enviable success producing sale lots. Four were selected for last year's offering. Foundation 3rd dam appeared up close in three of the pedigrees.
- Recommended for heifers.

# Weeks Angus Yearling Heifers



**WAF Oakleaf  
W425**

Lot 38

*Weeks Angus*  
**LOT 38 WAF Oakleaf W425**

Born: 02/21/14 17966952 Tattoo: W425 Cow

MOGCK Sure Shot  
**Mogck Bullseye**  
17102085 Mogck Mary 1255

Streams New Design 1407-3169 [ DDP ]  
**Weeks Oakleaf W712**  
15886171 WAF Oakleaf W047 [ DDP ]

Mytty In Focus #  
Mogck Black Lass 2065  
K C F Bennett Coalition SCC #  
Mogck Mary C 1757  
Bon View New Design 1407 [ DDC ] #  
Streams Visa Lass 169  
C F A Lily's Dateline  
WAF Oakleaf W207 [ DDP ]

PRODUCTION EPDs				MATERNAL EPDs			\$ VALUES					
CED	BW	WW	YW	CEM	Milk	\$EN	\$W	\$F	\$G	\$B		
-9	+5.4	+58	+99	+0	+25	-19.83	+29.77	+50.10	+33.44	+91.94		
CARCASS	CW	I+30	.05	MARB	I+.51	.05	REA	I+.53	.05	FAT	I+.014	.05

- Individual Performance: BW 100 lbs, 205 Wt. 663 lbs, WWR 104.
- Dam's Production: 5 NR 97. Calving Interval 6 @ 367 days.
- Posts the top YW, third best \$B value and the fifth heaviest WW among the sale heifers.
- Full sister to the dam produced Lot 35 heifer in last year's offering after placing two sons and a daughter to work throughout central and southern Iowa.
- Maternal grandam has a pair of daughters in the herd who have both raised sale lots in the 2013 and 2014 offerings.

*Weeks Angus*  
**LOT 40 WAF Blackcap Bessie W426**

Born: 02/25/14 17966953 Tattoo: W426 Cow

TC One Way 618 #  
**TC One Way 8159**  
16150352 TC Marcia 9069 #

C F A Lily's Dateline  
**Weeks Blackcap Bessie W714**  
15875264 Swanson Blkcp Bessie 115-244

Rito 112 of 2536 Rito 616 #  
TC Quality 7122  
War Command 7131 3247 #  
TC Marcia 6171 #  
Century Hitone 144  
C F A Lily 939  
Circle A Dividend 3090  
Swanson Blackcap Bessie 14

PRODUCTION EPDs				MATERNAL EPDs			\$ VALUES					
CED	BW	WW	YW	CEM	Milk	\$EN	\$W	\$F	\$G	\$B		
+5	+0.9	+31	+55	+12	+20	+12.06	+25.82	-.73	+19.52	+52.05		
CARCASS	CW	I+16	.05	MARB	I+.40	.05	REA	I-.15	.05	FAT	I+.039	.05

- Individual Performance: BW 71 lbs, BWR 86, 205 Wt. 578 lbs, WWR 87.
- Dam's Production: 6 BWR 87, 6 NR 96. Calving Interval 6 @ 368 days. She posts 3 @ IMF 116,
- Tied for fourth lowest actual BW recorded among sale heifers this year.
- Dam blends the Pathfinders Century Touchstone 131, "Battle Cry" and TC Dividend 963 in her pedigree.

*Weeks Angus*  
**LOT 39 WAF Zara W412**

Born: 02/22/14 17966942 Tattoo: W412 Cow

Connealy Irish 0204  
**TC Irish 2117**  
17398361 TC Erica Eileen 6055 #

S A V 8180 Traveler 004 #  
**WAF Zara W105**  
17143746 WAF Zara W518

Connealy Wrangler  
Black Crest of Conanga 5640 #  
TC Friction 3275  
TC Erica Eileen 3072 #  
Sitz Traveler 8180 #  
Boyd Forever Lady 8003  
M A Focus 116 [ CAP ]  
Weeks' Zara W182

PRODUCTION EPDs				MATERNAL EPDs			\$ VALUES			
CED	BW	WW	YW	CEM	Milk	\$EN	\$W	\$F	\$G	\$B
+0	+3.5	+44	+84	+8	+19	-1.14	+21.71	+34.93	NA	NA

- Individual Performance: BW 91 lbs, 205 Wt. 558 lbs, WWR 88.
- Foundation 3rd dam appears as the grandam of the top selling female from last year's offering and the Lot 11 feature in the 2013 sale.
- This young dam offers plenty of maternal strength being sired by the powerful Pathfinder "004."

*Weeks Angus*  
**LOT 41 WAF Miss Blitz W408**

Born: 02/27/14 17966905 Tattoo: W408 Cow

M A Broadside 1334-822 #  
**TC Broadside 150 +**  
17038153 TC Marcia 1069 #

Mytty In Focus #  
**WAF Miss Blitz W012**  
16793521 Weeks Miss Blitz W813

Bon View New Design 878 #  
MA Miss Emulous 822  
Connealy Forefront #  
TC Marcia 7105  
S A F Focus of E R #  
Mytty Countess 906  
Bon View New Design 878 #  
W A F Miss Blitz W044 [ CAP ]

PRODUCTION EPDs				MATERNAL EPDs			\$ VALUES					
CED	BW	WW	YW	CEM	Milk	\$EN	\$W	\$F	\$G	\$B		
+5	+1.8	+55	+91	+10	+26	-16.60	+43.25	+39.21	+20.81	+99.76		
CARCASS	CW	I+47	.05	MARB	I+.32	.05	REA	I+.31	.05	FAT	I+.006	.05

- Individual Performance: BW 74 lbs, BWR 91, 205 Wt. 660 lbs, WWR 99.
- Dam's Production: 2 BWR 94, 2 NR 102, 1 YR 100. Calving Interval 2 @ 360 days. She posts 1 @ REA 104, Rib Fat 90, Rump Fat 77.
- Adjusted Ultrasound Scan Data: %IMF, Ratio, REA, Ratio, Rib Fat, Ratio, Rump Fat, Ratio.
- Posts the top \$W and \$B values in the sale offering among heifers, as well as fifth best actual weaning weight and yearling weight.
- Dam offers enviable early growth to the equation. Her Lot 31 bull from last year's offering posted the 2nd highest \$W and 3rd highest \$B among his contemporaries.





## WAF Erica W415

Lot 42

### Weeks Angus LOT 42 WAF Erica W415

Born: 03/18/14 17966967 Tattoo: W415 Cow

M A Broadside 1334-822 #  
TC Broadside 150 +  
17038153 TC Marcia 1069 #

LaGrand Final Answer 9065  
W A F Erica W117  
17143784 Weeks Erica W901

Bon View New Design 878 #  
MA Miss Emulous 822  
Connealy Forefront #  
TC Marcia 7105  
S A V Final Answer 0035 #  
LaGrand Forever Lady 4048  
S A V 8180 Traveler 004 #  
Weeks Erica W089 T

PRODUCTION EPDs				MATERNAL EPDs			\$ VALUES			
CED	BW	WW	YW	CEM	Milk	\$EN	\$W	\$F	\$G	\$B
+2	+2.4	+54	+92	+8	+25	-15.17	+39.12	+41.40	NA	NA

- Individual Performance: BW 71 lbs, BWR 90, 205 Wt. 642 lbs, WWR 96.
- Dam's Production: 2 BWR 98, 2 NR 100. Calving Interval 2 @ 343 days.
- Records the third best \$W, is tied for the 4th lowest actual BW and posts the fourth best YW among sale heifers.
- Foundation 3rd dam is a second generation Pathfinder and her daughter produced the Lot 2 bull in last year's sale.
- Bottom side of this pedigree blends "Final Answer" and "004," two of the breed's best.

### Weeks Angus LOT 44 WAF Eline W405

Born: 02/28/14 17966974 Tattoo: W405 Cow

M A Broadside 1334-822 #  
TC Broadside 150 +  
17038153 TC Marcia 1069 #

Connealy Thunder #  
W A F Eline W006  
16793536 Weeks Eline W611 #

Bon View New Design 878 #  
MA Miss Emulous 822  
Connealy Forefront #  
TC Marcia 7105  
Baldrige Kaboom K243 KCF #  
Parka of Conanga 241 [CAC-DDP] #  
Streams New Design 1407-3169 [DDP] #  
W A F Eline W041

PRODUCTION EPDs				MATERNAL EPDs			\$ VALUES			
CED	BW	WW	YW	CEM	Milk	\$EN	\$W	\$F	\$G	\$B
+2	+2.8	+49	+88	+7	+26	-14.64	+33.39	+38.15		

- Individual Performance: BW 78 lbs, BWR 96, 205 Wt. 635 lbs, WWR 95.
- Dam's Production: 2 NR 102, YR. She posts @ IMF, REA, Rib Fat, Rump Fat.
- Posts the 5th best \$W value among females in this sale.
- Maternal grandam is a Pathfinder that has produced the Lot 21 feature in the 2014 sale as well as another replacement female besides "W006."
- Foundation 3rd dam's mother is a Pathfinder and "W041" posted an individual WWR of 110. She produced a son that is at work for Burgmaier Farms of Creston, IA as well as the Lot 10 bull last year.

### Weeks Angus LOT 43 WAF Blossom W409

Born: 02/28/14 17966915 Tattoo: W409 Cow

M A Broadside 1334-822 #  
TC Broadside 150 +  
17038153 TC Marcia 1069 #

Stock Right W962  
W A F Blossom W590  
15212418 Blossom V925 #

Bon View New Design 878 #  
MA Miss Emulous 822  
Connealy Forefront #  
TC Marcia 7105  
TC Stockman 365 #  
Blossom V603 #  
Traveler 017  
Blossom V411

PRODUCTION EPDs				MATERNAL EPDs			\$ VALUES					
CED	BW	WW	YW	CEM	Milk	\$EN	\$W	\$F	\$G	\$B		
-+8	+6.0	+55	+88	+2	+22	-8.57	+27.87	+34.52	+12.94	+88.77		
CARCASS	CW	I+44	.05	MARB	I+.12	.05	REA	I+.27	.05	FAT	I-.005	.05

- Individual Performance: BW 91 lbs, 205 Wt. 668 lbs, WWR 100.
- Dam's Production: 8 BWR 100, 8 NR 101, 1 YR 101. Calving Interval 8 @ 363 days. She posts 2 @ REA 100, Rib Fat 97, Rump Fat 90.
- Posts fourth best WW and the fifth most impressive \$B value in the sale heifers.
- Maternal sister has been retained in the herd and produced the Lot 8 bull last year. Another was the Lot 42 heifer in the 2013 offering.
- Maternal grandam is a Pathfinder bred in the Varley program.
- Foundation 3rd dam is an own daughter of the Pathfinder Hoff Hi Spade S C 491.

### Weeks Angus LOT 45 WAF Miss Blitz W427

Born: 03/05/14 17966906 Tattoo: W427 Cow

M A Broadside 1334-822 #  
TC Broadside 150 +  
17038153 TC Marcia 1069 #

S A V 8180 Traveler 004 #  
Weeks Miss Blitz W800  
16144279 Weeks Miss Blitz W063 [CAP]

Bon View New Design 878 #  
MA Miss Emulous 822  
Connealy Forefront #  
TC Marcia 7105  
Sitz Traveler 8180 #  
Boyd Forever Lady 8003  
Werner Casey 213  
W A A Miss Blitz # [CAP]

PRODUCTION EPDs				MATERNAL EPDs			\$ VALUES			
CED	BW	WW	YW	CEM	Milk	\$EN	\$W	\$F	\$G	\$B
-+2	+4.1	+47	+79	+6	+21	-1.63	+27.99	+25.44		

- Individual Performance: BW 87 lbs, BWR 106, 205 Wt. 634 lbs, WWR 95.
- Dam's Production: 5 NR 98. Calving Interval 5 @ 372 days.
- Maternal sister earned her way into the herd with a WWR of 106 and went on to produce the Lot 45 heifer last year in her first attempt.
- Foundation 3rd dam is a Pathfinder.



## WAF Ursula W419

Lot 46

### LOT 46 WAF Ursula W419

Born: 02/02/14 17966988 Tattoo: W419 Cow

Connealy Wrangler  
Connealy Irish 0204  
16761484 Black Crest of Conanga 5640 #

S A V Final Answer 0035 #  
W A F Ursula W209  
17383345 W A F Ursula W011

Connealy Cowboy  
Kelly of Conanga 577  
Mytty In Focus #  
Black Cresha of Conanga 3314  
Sitz Traveler 8180 #  
S A V Emulous 8145  
Mytty In Focus #  
Weeks Ursula W802

PRODUCTION EPDs				MATERNAL EPDs			\$ VALUES			
CED	BW	WW	YW	CEM	Milk	\$EN	\$W	\$F	\$G	\$B
+12	-1.0	+51	+95	+14	+21	-10.32	+37.44	+48.03	NA	NA

- Individual Performance: BW 64 lbs, BWR 94, 205 Wt. 627 lbs, WWR 94.
- Dam's Production: 1 BWR 94.
- Records the 2nd best CED and YW, 4th high \$W along with the second lowest actual BW in this sale offering.
- Maternal grandsire bends the growth curve and offers calving ease as well as tremendous maternal strength.

### LOT 47 WAF Lady W430

Born: 03/08/14 17966958 Tattoo: W430 Cow

M A Broadside 1334-822 #  
TC Broadside 150 +  
17038153 TC Marcia 1069 #

S A V 8180 Traveler 004 #  
Weeks Lady W811  
16144302 C F L Lifter 4008

Bon View New Design 878 #  
MA Miss Emulous 822  
Connealy Forefront #  
TC Marcia 7105  
Sitz Traveler 8180 #  
Boyd Forever Lady 8003  
CFL Weightlifter Pride 1254  
Lone Lady 08

PRODUCTION EPDs				MATERNAL EPDs			\$ VALUES			
CED	BW	WW	YW	CEM	Milk	\$EN	\$W	\$F	\$G	\$B
-13	+7.5	+52	+84	-1	+23	-7.54	+21.11	+30.12	NA	NA

- Individual Performance: BW 99 lbs, BWR 120, 205 Wt. 703 lbs, WWR 106.
- Dam's Production: 4 NR 105. Calving Interval 5 @ 358 days.
- Posts the second best WW among sale heifers this year.
- Maternal grandsire is the exceptional "8180" son that offers tremendous maternal value and has sired more than his share of elite herd bulls and AI sires.

### LOT 48 WAF Erica W402

Born: 03/14/14 17966969 Tattoo: W402 Cow

M A Broadside 1334-822 #  
TC Broadside 150  
17038153 TC Marcia 1069 #

M A Focus 116 [ CAP ]  
W A F Erica W049  
14888061 Weeks' Erica W189

Bon View New Design 878 #  
MA Miss Emulous 822  
Connealy Forefront #  
TC Marcia 7105  
S A F Focus of E R #  
M A Blackbird M919 [ CAP ] #  
Stock Right W962  
B J Erica Distinction 9610 #

PRODUCTION EPDs				MATERNAL EPDs			\$ VALUES					
CED	BW	WW	YW	CEM	Milk	\$EN	\$W	\$F	\$G	\$B		
-9	+6.7	+50	+83	+3	+20	-2.83	+19.34	+29.78	+19.74	+91.57		
CARCASS	CW	I+41	.05	MARB	I+.22	.05	REA	I+.37	.05	FAT	I-.008	.05

- Individual Performance: BW 100 lbs, 205 Wt. 679 lbs, WWR 102.
- Dam's Production: 9 NR 95, Calving Interval 9 @ 368 days.
- Posts the third heaviest WW and the 4th highest \$B value among heifers offered up this year.
- This girl's pedigree blends the influential S A F Focus of ER and "878."

### LOT 49 WAF Miss Blitz W431

Born: 03/17/14 17966907 Tattoo: W431 Cow

TC One Way 618 #  
TC One Way 8159  
16150352 TC Marcia 9069 #

Bon View New Design 878 #  
Weeks Miss Blitz W813  
16144306 W A F Miss Blitz W044 [ CAP ]

Rito 112 of 2536 Rito 616 #  
TC Quality 7122  
War Command 7131 3247 #  
TC Marcia 6171 #  
B/R New Design 036 [ DDC ] #  
Bon View Gammer 85 [ CAC ]  
Stock Right W962  
Weeks Miss Blitz W063 [ CAP ]

PRODUCTION EPDs				MATERNAL EPDs			\$ VALUES					
CED	BW	WW	YW	CEM	Milk	\$EN	\$W	\$F	\$G	\$B		
+2	+2.6	+40	+71	+9	+27	-7.83	+30.06	+17.47	+24.04	+75.27		
CARCASS	CW	I+27	.05	MARB	I+.44	.05	REA	I+.04	.05	FAT	I+.022	.05

- Individual Performance: BW 79 lbs, BWR 99, 205 Wt. 631 lbs, WWR 99.
- Dam's Production: 4 NR 107, 2 YR 105. She posts 2 @ IMF 104, REA 106.
- Daughters of "878" have come to be regarded as breed "treasures" throughout the industry.
- Maternal sister posted individual performance of BWR 97 and WWR 105, she also was responsible for the Lot 31 bull in last year's offering who had 2nd highest \$W and 3rd best \$B.



WAF Oakleaf W434

LOT 50 **WAF Oakleaf W434**  
 Born: 04/21/14 17966946 Tattoo: W434 Cow

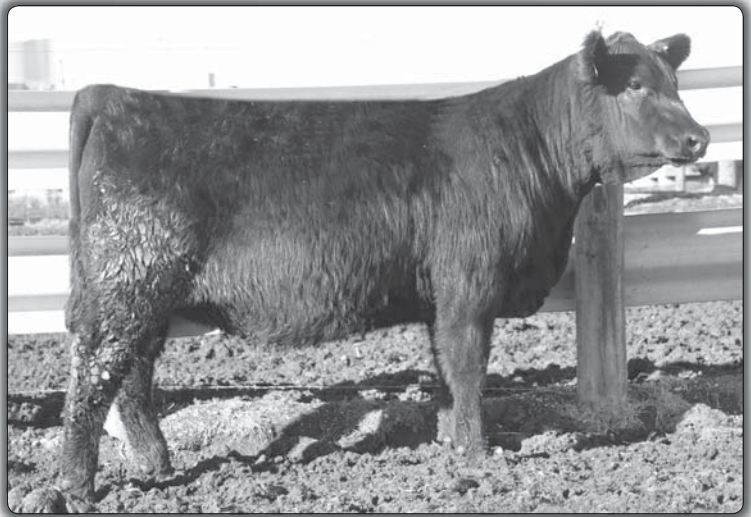
M A Broadside 1334-822 #  
 TC Broadside 150 +  
 17038153 TC Marcia 1069 #

Bon View New Design 878 #  
 MA Miss Emulous 822  
 Connealy Forefront #  
 TC Marcia 7105  
 S A F Focus of E R #  
 Mytty Countess 906  
 Streams New Design 1407-3169 [ DDP ]  
 W A F Oakleaf W047 [ DDP ]

Mytty In Focus #  
 Weeks Oakleaf W911 #  
 16511663 Weeks Oakleaf W712

PRODUCTION EPDs				MATERNAL EPDs			\$ VALUES					
CED	BW	WW	YW	CEM	Milk	\$EN	\$W	\$F	\$G	\$B		
-5	+5.0	+56	+93	+3	+28	-21.20	+33.59	+41.75	+21.43	+98.39		
CARCASS	CW	I+45	.05	MARB	I+33	.05	REA	I+32	.05	FAT	I+009	.05

- Individual Performance: BW 94 lbs, 205 Wt. 731 lbs, WWR 110,
- Dam's Production: 4 NR 112, 2 YR 110. She posts 2 @ IMF 108, REA 103.
- Posts the top WW, second highest \$B value and the 3rd heaviest YW among sale heifers this year.
- Pathfinder dam combines Mytty In Focus along with the Pathfinder "1407" in her lineage.



WAF Oakleaf W434 • Lot 50

WAF Lady W422

LOT 51 **WAF Lady W422**  
 Born: 03/10/14 17967005 Tattoo: W422 Cow

TC One Way 618 #  
 TC One Way 8159  
 16150352 TC Marcia 9069 #

Rito 112 of 2536 Rito 616 #  
 TC Quality 7122  
 War Command 7131 3247 #  
 TC Marcia 6171 #  
 B/R New Design 036 [ DDC ] #  
 Bon View Gammer 85 [ CAC ]  
 CFL Weightlifter Pride 1254  
 Lone Lady 08

Bon View New Design 878 #  
 Weeks Lady W610  
 15489403 C F L Lifter 4008

PRODUCTION EPDs				MATERNAL EPDs			\$ VALUES					
CED	BW	WW	YW	CEM	Milk	\$EN	\$W	\$F	\$G	\$B		
-4	+4.6	+31	+58	+5	+22	+7.32	+14.20	+3.55	+23.65	+64.96		
CARCASS	CW	I+21	.05	MARB	I+40	.05	REA	I+03	.05	FAT	I+021	.05

- Individual Performance: BW 99 lbs, 205 Wt. 555 lbs, WWR 87.
- Dam's Production: Calving Interval 7 @ 368 days.

WAF Erica W421

LOT 53 **WAF Erica W421**  
 Born: 03/14/14 17966996 Tattoo: W421 Cow

S A V Bismarck 5682 #  
 LaGrand Bismarck 0084  
 16829637 LaGrand Bonny 8062

G A R Grid Maker #  
 S A V Abigale 0451  
 DCC First Look 3001  
 LaGrand Bonny 3769  
 B/R New Design 036 [ DDC ] #  
 Bon View Gammer 85 [ CAC ]  
 S A V 8180 Traveler 004 #  
 Weeks Erica W089 T

Bon View New Design 878 #  
 W A F Erica W230  
 17383395 Weeks Erica W901

PRODUCTION EPDs				MATERNAL EPDs			\$ VALUES				
CED	BW	WW	YW	CEM	Milk	\$EN	\$W	\$F	\$G	\$B	
+13	-1.5	+45	+77	+14	+24	-5.41	+41.12	+23.58	NA	NA	

- Individual Performance: BW 61 lbs, BWR 85, 205 Wt. 628 lbs, WWR 99.
- Dam's Production: 1 BWR 85, 1 NR 99.
- Posts the top CED and BW as well as the second best \$W among these sale heifers.
- Sire comes to this program with a low birth weight reputation and he has held true to that. His sire has been extremely popular, earning the #2 registration ranking in 2012.

WAF Oakleaf W423

LOT 52 **WAF Oakleaf W423**  
 Born: 03/11/14 17966947 Tattoo: W423 Cow

TC One Way 618 #  
 TC One Way 8159  
 16150352 TC Marcia 9069 #

Rito 112 of 2536 Rito 616 #  
 TC Quality 7122  
 War Command 7131 3247 #  
 TC Marcia 6171 #  
 Bon View New Design 1407 [ DDC ] #  
 Streams Visa Lass 169  
 C F A Lily's Dateline  
 W A F Oakleaf W207 [ DDP ]

Streams New Design 1407-3169 [ DDP ]  
 Weeks Oakleaf W614  
 15469333 W A F Oakleaf W047 [ DDP ]

PRODUCTION EPDs				MATERNAL EPDs			\$ VALUES					
CED	BW	WW	YW	CEM	Milk	\$EN	\$W	\$F	\$G	\$B		
+0	+2.6	+36	+65	+7	+23	+1.91	+25.16	+10.90	+25.29	+61.68		
CARCASS	CW	I+18	.05	MARB	I+41	.05	REA	I+05	.05	FAT	I+019	.05

- Individual Performance: BW 82 lbs, 205 Wt. 594 lbs, WWR 94.
- Dam's Production: 7 NR 98, 1 YR 100. Calving Interval 7 @ 372 days.
- This dam boasts "Rito 112" as foundation sire and her other great grandsire is the Pathfinder "1407," meaning this pedigree is pretty well covered for carcass strength and maternal value wont disappoint either.

WAF Blueblood Lady W411

LOT 54 **WAF Blueblood Lady W411**  
 Born: 03/26/14 17966963 Tattoo: W411 Cow

Connealy Irish 0204  
 TC Irish 2117  
 17398361 TC Erica Eileen 6055 #

Connealy Wrangler  
 Black Crest of Conanga 5640 #  
 TC Friction 3275  
 TC Erica Eileen 3072 #  
 TC One Way 618 #  
 TC Marcia 9069 #  
 Twin Valley Precision E161 [ NHC ] #  
 Blueblood Lady Ellston N10

TC One Way 8159  
 W A F Blueblood Lady W104  
 17143743 W A F Blueblood Lady W043

PRODUCTION EPDs				MATERNAL EPDs			\$ VALUES				
CED	BW	WW	YW	CEM	Milk	\$EN	\$W	\$F	\$G	\$B	
+8	+0.6	+34	+71	+11	+24	-2.22	+25.32	+20.96	NA	NA	

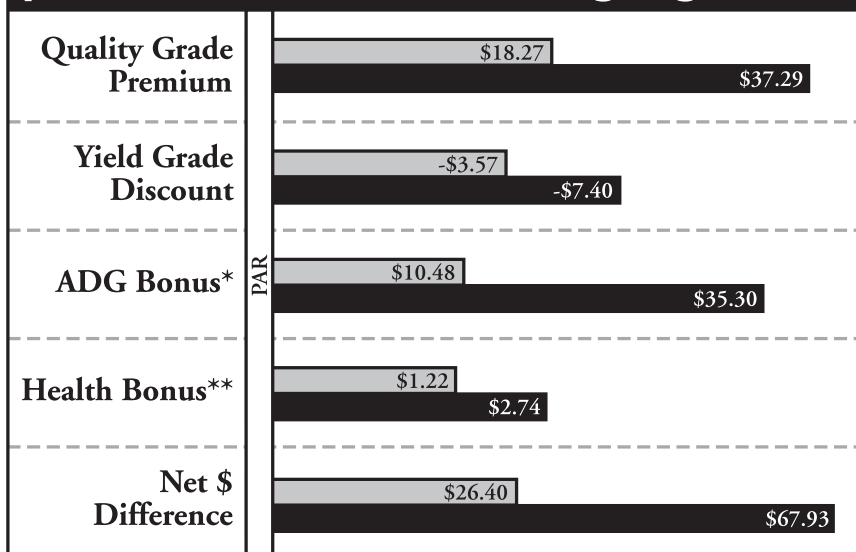
- Individual Performance: BW 68 lbs, BWR 89, 205 Wt. 520 lbs, WWR 82.
- Dam's Production: 2 BWR 90.
- Posts the third best CED and 3rd lowest actual BW among sale heifers this year.
- "Irish," TC One Way 8159 blend with the cornerstone matron "N10," who appears as the foundation 3rd dam in this late March heifer's pedigree.

# BLACKink BASICS

## Angus Genetics Grow Profit Potential

Crossbred calves can deliver part of the package, but the bottom line is that Angus cattle gain and grade. New evidence says high-percent Angus cattle make money at every link in the production chain, returning \$68 per head more than low-percent Angus cattle.

### Comparison of the net increase in dollars per-head returned due to Angus genetics.



Percentage Angus: 0-25 is represented by PAR □ 26-75 ■ 76-100

\*based on the pounds of additional carcass weight gained in the feedlot

\*\*based on the reduction in medicine, labor and chute/equipment charges

Data represents 9,893 calves from 12 states fed at eight Iowa feedlots during 2002-04.



Read more on this study and others at [www.CABpartners.com/news/basics](http://www.CABpartners.com/news/basics)



The brand that pays.®



**- NOTES -**

Sale Managed By:  
**Conover**  
*Auction Service*  
P.O. Box 9 - Baxter, IA 50025  
**AL & JEANNE CONOVER**  
641-227-3537 - 641-227-3792 (FAX)  
DAVE SWEENEY - 641-373-4340  
www.conoverauction.com  
conover@conoverauction.com



# WEEKS

*Angus Farm*

**PRODUCTION  
SALE**

*Saturday - 1:00 PM*  
**MARCH 7  
2015**

Madison County Livestock Auction  
*Winterset, IOWA*