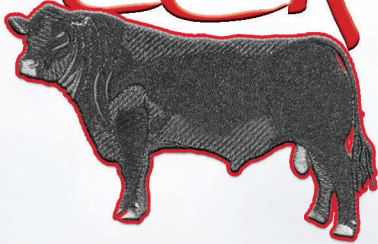


Peckenpaugh



ANGUS

Annual 2 Year Old

Friday

FEB. 26 2021
1:30 PM

At The Ranch - Carthage, SD

**B
U
L
L
S
A
L
E**



LOT 1



LOT 3

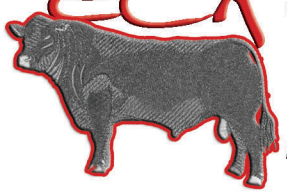


LOT 4



All animals in this sale
have been 50K tested

Peckenpaugh ANGUS



Selling
50 Virgin Two Year Old Bulls

AGI **ALL BULLS 50K TESTED**
GE-EPD

Annual 2 Year Old **BULLSALE**

Friday
FEB. 26 2021
1:30 PM
At The Ranch - Carthage, SD

SALE DAY PHONES:

TONY PECKENPAUGH (605) 860-0130
BOB PECKENPAUGH (605) 860-1503
(605) 860-8406

CONOVER AUCTION SERVICE CELL PHONES:
515-491-8078 • 515-491-1335

AMERICAN ANGUS ASSOCIATION

Rod Geppert.....605-295-3673

ANGUS BOARD OF DIRECTORS

Mick Varilek.....605-337-2261

LIVESTOCK PRESS REPRESENTATIVES

Cattle Business Weekly.....Jim Scheel (605) 545-1521

Special Assignment.....Chris Effling (605) 769-0142

Tri State Neighbor.....Jeff Kapperman (605) 940-5104



Auctioneer:
Al Conover
(515) 491-8078

This sale will be broadcast live on the internet.



See Details on Page 25

VIEW BULL VIDEOS ONLINE
AT WWW.DVAUCTION.COM

GENERAL INFORMATION

SALE LOCATION: At the farm, 21722 428th Ave, Carthage, SD 57323
Directions to the Farm:
From Carthage: Go east on 222nd St 3 miles to 428th Ave. Turn north and go 4.5 miles. East side of the road.
From Manchester: From Hwy 14 go south on 425th Ave to 215th St. Turn east and go 3 miles to 428th Ave and go south 2.5 miles.
From DeSmet: Go south on Hwy 25 8 miles to 215th St. Go 5 miles west to 428th Ave and turn south and go 2.5 miles.
MOTEL ACCOMMODATIONS:
Kelly Inn, Mitchell, SD. Phone: 605-995-0500.
Days Inn, Mitchell, SD. Phone: 605-996-6208.
Comfort Inn, Mitchell, SD. Phone: 605-996-1333.
De Smet Super Deluxe Inn & Suites, De Smet, SD Phone: 605-854-9388
Best Wetern, Huron, SD. Phone: 605-352-2000

INSPECTION OF CATTLE:
Cattle are available for inspection and viewing anytime prior to the sale. Please call to make arrangements.

HEALTH:
Interstate health papers furnished on all cattle selling. All bulls semen tested prior to the sale and are guaranteed breeders.

EPDS & \$VALUES:
The American Angus Association is now calculating EPDs on a weekly basis using all available carcass harvest data, ultrasound data and the Igenity Angus specific genomic profile data. It is possible new data has been submitted between the date the catalog was finalized and sale day, which will affect the individual EPDS and \$Values indexes of the animals selling. If your purchasing decision relies highly on the most current data available, please look up animals of interest on the American Angus Association web page prior to viewing the sale offering.

TERMS: Cash - please settle for cattle promptly.

TERMS & CONDITIONS:
All cattle sell according to the standard terms and conditions of the American Angus Association.

TRUCKING: We will be glad to assist in making the best possible trucking arrangements.

INSURANCE:
Will be available sale day through Conover Auction Service, agent for Liberty Mutual Equine & Livestock Insurance.

LIABILITY:
All persons attending this sale do so at their own risk, legal or otherwise for their safety or the behavior of the animals. The Owners, Auction Service and Sale Staff assume no liability for property loss or any accidents that may occur.

ANNOUNCEMENTS:
From the block will take precedence over the catalog. Buyers unable to attend may send their bids to the Auction Service, Field Representatives or Auctioneer.

LUNCH: Complimentary lunch will be served at 12:00 NOON

Retaining a 1/3 semen revenue sharing interest in each bull in the sale. Buyer maintains 100% possession and salvage value.

SEE BULL WINTERING & GUARANTEE INFO ON PAGE 25

Bull Guarantee Details on Page 25

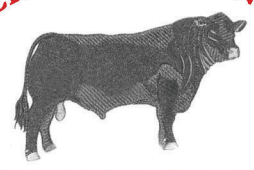
21722 428th Ave - Carthage, SD 57323

TONY PECKENPAUGH
(605) 860-0130 (cell)

BOB PECKENPAUGH
(605) 772-5398 (home) - (605) 860-1503 (cell)

peckenpaughangus@gmail.com
www.peckenpaughangus.com

PECKENPAUGH ANGUS



CARTHAGE, SD

Sale Managed By:
Conover
Auction Service
P.O. Box 9 - Baxter, IA 50028
AL & JEANNE CONOVER
641-227-3537 - 641-227-3792 (FAX)
DAVE SWEENEY - 641-373-4340
www.conoverauction.com
conover@conoverauction.com

PECKENPAUGH ANGUS



21722 428th Ave

CARTHAGE, SD

Welcome to our production sale February 26th at 1:30pm at the farm! Seems like 2019 was a crazy year then came 2020 with new adventures again for the cattle producers to deal with. Let us hope 2021 brings better times for everyone. With everything going on in the world, one thing that hasn't changed is we still need cattle to produce products for the world. Quality usually pays for itself either at the sale barn or just on the farm having the cows that do the job and are easy to handle. To us a cow that does a great job is worth a lot of value, because we are just like other farms, not enough time in a day to get everything done. So the cow has to pull her weight in the herd. The bulls selling are out of cows that did the job.

We are offering a big stout group of 2 year old virgin bulls again this year! They have never been topped or picked out of. There's large framed bulls in the offer or moderate framed bulls to pick from. We have a few bulls selling that are out of new herd sires that never had offspring sold before. We don't push our bulls at a young age, try to let them grow up, not forced. Then in the summer they run out on smaller pastures, going through their yearling stage. Bulls will be semen checked prior to the sale, giving anthrax, footrot, and giving oral wormer at that time. They had all their shots as calves, and last fall gave a 7way booster along with Cattlemaster 4 VL5.

If you have any questions about the bulls please contact us and we will help you out! We appreciate you showing interest in our program and it is great to see friends and past customers on sale day. We look forward to meeting new customers as well! If you would like to see the bulls prior to sale day, you are welcome to! Just let us know you're coming. Thank you for your time and look forward to seeing you sale day!

Sincerely,
Peckenpaugh Angus

Tony Peckenpaugh

(605) 860-0130 (cell)

Bob Peckenpaugh

(605) 772-5398 (home) - (605) 860-1503 (cell)

peckenpaughangus@gmail.com

peckenpaughangus.com

Sale Managed By:



P.O. Box 9 - Baxter, IA 50028

AL & JEANNE CONOVER

641-227-3537 • Fax: 641-227-3792

DAVE SWEENEY 641-373-4340

Email: conover@conoverauction.com

www.conoverauction.com

Dear Angus Friends

It is once again a pleasure to assist the Peckenpaugh's with their ninth offering of high-quality Angus bulls. These outstanding herd bull prospects excel at the traits that have made the Angus breed famous; they are easy calving, growthy, efficient, and well positioned to benefit from the grid pricing premiums.

In today's cattle industry, it is not enough to just be black hided. The difference between profit and significant loss in this business can be found in the genetic material. The EPDs and performance information included in this catalog can be used to make comparisons and develop a road map to your economic success.

These bulls are coming two-year-olds that have been properly developed in the same range conditions where they will be asked to service cows while maintaining their athleticism and virility. Studying this catalog should reveal a re-occurring theme. The Peckenpaugh program is built on production traits that favor low-input operations. EPDs will reveal optimum milk and calving ease attributes (3/4 of sale offering are suitable for heifers) with high Docility and Heifer Pregnancy values.

We were gratified to see so many repeat customers in 2020 and know that the Peckenpaugh family prides themselves on servicing their clients. As always, we look forward to seeing you on February 26th at the Peckenpaugh sale facility, Carthage, SD. If you have any questions, don't hesitate to call our office or the Peckenpaugh's directly.

*Al and Jeanne Conover
Dave Sweeney*



Al Conover



Jeanne Conover



Dave Sweeney

Peckenpaugh Angus Herd Sires



Peckenpaugh Double Vision 9139

Son of Reference Sire A
Sells as Lot 1

A Jindra Double Vision J 342

Born: 01/20/15		18380903		Tattoo: 255		Bull					
Connealy Reflection #		Bon View New Design 878 #		Happy Grill of Conanga 6260		Hoff Limited Edition S C 594 #					
Jindra Double Vision #*		Hoff Miss Expo S C 4223		Connealy Dublin 8223 #		Panda of Conanga 3609					
16748826		Hoff Rachel 8312 405 +		Hoff Uncharted 271 144		Jindra Exquisite J 405 825 #+					
Connealy Guinness #*		Jindra Rosella J 151 342		18327345		Jindra Rosella J 825 151					
CED	BW	WW	YW	SC	DOC	HP	CEM	Milk			
+5	+1.2	+61	+109	+58	+22	+12.8	+7	+33			
CW	Marb	RE	FAT	\$M	\$W	\$B	\$C				
+52	.39	+72	.31	+34	.36	+040	.32	+55	+70	+155	+256

- Selected by Peckenpaugh Angus from the 2016 Jindra Angus Bull Sale where he posted a BW 72 lbs, BWR 94, WW 813 lbs, WWR 106, YW 1472 lbs, and YWR 106.
- His dam has a phenomenal progeny record of BR 5@96, NR 5@111, YR 3@108, IMF 4@109.
- Sixteen Sons will sell.

B Montana Timeless 426 SF

Born: 12/08/13		*17882038		Tattoo: 426		Bull					
Leachman Right Time 338-5605 #+		Hyline Right Time 338 #		Leachman Erica 1201 +		W M R Dateline 210					
WMR Timeless 458 #		W M R Blackcap 043		Sitz Traveler 8180 #		S A V Emulous 8145					
16226527		W M R Blackcap 210		S A V Final Answer 0035 #*		Woodhill Foresight #+					
S A V Final Answer 0035 #*		SF Barbara 033		H P C A 1407 New Design 365 +							
16696476		SF Barbara 819 #+									
CED	BW	WW	YW	SC	DOC	HP	CEM	Milk			
+11	+3	+56	+88	+40	+34	+10.5	+14	+30			
CW	Marb	RE	FAT	\$M	\$W	\$B	\$C				
+36	.48	+10	.43	+66	.43	+025	.43	+74	+69	+100	+204

- Selected by Peckenpaugh Angus as the \$18,500 feature of the 2015 Montana Angus Ranch Sale where he posted a WWR 108 and YWR 106 with a RE ratio 109, Rib Fat ratio 70 and Rump Fat ratio 58.
- His sire, WMR Timeless 458 is an Accelerated Genetics feature that is a growth, muscle and power sire. He topped the Wheeler Mountain Angus Bull Sale at \$32,000 2/3 interest.
- His Final Answer dam records NR 4@104 and YR 4@102 and his grandam earned Pathfinder status.



Montana Timeless 426 SF

Reference Sire B

Peckenpaugh Angus Herd Sires

C 44 Perfect Balance 5834

Born: 12/04/15 +*18353122 Tattoo: 5834 Bull

V A R Discovery 2240 #*
17262835 Deer Valley Rita 0308 +*

Rita Revenue 5M2 of 2536 Pre #*
Rita 0245 of Rita 7068 5M2 +
16874033 Rita 7068 of Rita 5FH8 Obj +

Mytty In Focus #*
A A R Lady Kelton 5551 #
Sitz Upward 307R #
G A R Objective 2345 #
G A R Predestined #*
G A R Precision 2536
S S Objective T510 0T26 #*
Rita 5FH8 of Rita 2V5 FD +*



CED	BW	WW	YW	SC	DOC	HP	CEM	Milk			
+13	+5	+67	+136	+73	+24	+10.6	+9	+36			
CW	Marb	RE	FAT	\$M	\$W	\$B	\$C				
+61	.47	+1.26	.43	+65	.43	+0.33	.41	+57	+78	+193	+307

- Selected by Peckenpaugh Angus as the \$13,000 feature of the 2017 Fall 44 Farms Angus Bull Sale. His full brothers "in-blood" were the featured lots 1, 2 and 3 in the landmark event. As his name insinuates, Perfect Balance combines a double-digit CED, a Marb EPD in the top 2% and \$W, \$F, \$G, \$B and \$C ranging from the top 1% to the top 10% among proven bulls.
- His first progeny have verified his curve bending attributes with a progeny portfolio of BWR 22@99, WWR 22@101, YWR 22@101, IMF 18@115, RE 18#100 and Rib Fat 18@97.
- Twelve sons will sell.



44 Perfect Balance 5834 • Ref Sire C

D Montana Upward 533 SF

Born: 12/31/14 *18191275 Tattoo: 533 Bull

Connealy Onward #*
Sitz Upward 307R #
14963730 Sitz Henrietta Pride 81M

SF Miss 3437 #*
18009124 SF Miss 975 +*

Connealy Lead On #
Altune of Conanga 6104
Sitz Value 7097 #
Sitz Henrietta Pride 1370
Connealy Consensus #*
Blue Lilly of Conanga 16
TC Total 410 #
SF AF Wyffels Miss 5407 +



CED	BW	WW	YW	SC	DOC	HP	CEM	Milk			
+6	-1.0	+59	+101	+32	+16	+12.4	+5	+27			
CW	Marb	RE	FAT	\$M	\$W	\$B	\$C				
+46	.48	+60	.44	+78	.43	+0.10	.43	+74	+72	+144	+261

- Tony Peckenpaugh's \$13,000 2/3 interest choice from the 2016 Montana Ranch Bull Sale where he reported individual performance of BW 74 lbs, BWR 99, WW 765 lbs, WWR 116, YW 1171 lbs, YWR 104, IMF 5.38%, IMF ratio 126, RE 14.1" and RE ratio 103.
- 533 was born unassisted from a first-calf heifer by "Consensus 7229" that was bred in the highly respected Sundberg Farms program in IL.
- Sons of Montana Upward enjoy excellent carcass attributes verified by progeny ratios of IMF 16@107, RE 16@101, Rib Fat 16@91 and Rump Fat 16@96.
- He enjoys a balanced EPD profile that ranks him in the breed's elite top 25% for 8 EPD traits and \$value indexes.



Montana Upward 533 SF • Ref Sire D

E BA New Design 501

Born: 02/26/15 18346134 Freeze Brand: 501 Bull

Sua New Design 435 RR 9654
BA New Design 316
17717785 BA RH Lauria 176

Sua Legend U8404 +
BA Lady Legend 356
17717823 B A Liza 954

E&B 878 New Design 435 #
Blackbird of RR 4688 #
BA Right ON 610
SUA Ranch Hand Lauria 3314
O C C Legend 616L
S U A 616 Supreme 111Z
Koupals Xception 413
B&B Zara 4045



CED	BW	WW	YW	SC	DOC	HP	CEM	Milk			
+9	-5	+42	+70	+37	+25	+8.5	+14	+18			
CW	Marb	RE	FAT	\$M	\$W	\$B	\$C				
+25	.38	+18	.34	+41	.34	+0.10	.31	+57	+41	+91	+175

- Selected by Tony Peckenpaugh as the \$10,000 feature of the 2016 Born's Angus Sale in South Dakota where he recorded a modest BW 64 lbs, act WW 984 lbs and adj 365-day wt 1344 lbs with 4.08% IMF and an act 16.8 UREA.
- With only limited use he is proving to be a growth sire boasting a progeny WWR 9@105 and YWR 7@103.
- His outcross pedigree and positive \$EN suggest he will sire some "cow makers".



BA New Design 501 • Ref Sire E

F Hoover Electrify M34

Born: 01/13/13 17603593 Tattoo: M34 Bull

Basin Excitement #*
Hoover Electrify
16990022 Blkcp Empress Ellston D241

SydGen C.C. & 7 #*
Elbamere Queen Ellston J10
16697589 Elbamere Queen 536 #

Basin Expedition R156 +
Basin Lady 5532 AK
Woodhill Fusion 177-70L
Blackcap Empress Ellston A28
S A F Connection #+
SydGen Forever Lady 4087
Steele Hi Flyer C12
Elbamere Queen P22



CED	BW	WW	YW	SC	DOC	HP	CEM	Milk			
+2	+1.3	+54	+102	+1.48	+32	+14.9	+5	+21			
CW	Marb	RE	FAT	\$M	\$W	\$B	\$C				
+45	.45	+14	.41	+75	.41	-0.06	.41	+52	+47	+136	+228

- This outstanding young herd sire addition gained national attention as the \$24,000 third top-selling bull of the 2014 Hoover Angus sale where he was the 2nd top 205-day wt in his contemporary group of 150 bulls posting a WWR 117.
- His sire Hoover Electrify was one of the top selling bulls of the 2012 Hoover sale and serves in the ADD Angus herd in Iowa where his BW EPD continues to drop, and his WW EPD goes up with each succeeding calf crop.
- His four calf crops have revealed his carcass trait attributes verified by progeny ratios IMF 53@100, RE 53@102, Rib Fat 53@91 and Rump Fat 53@82.



Pecks Electrify 9110 • Son of Ref Sire F
Sells as Lot 3

Introducing Our Newest Herd Sire Aquisitions



SydGen Enhance GA 8430
Ref Sire G



SydGen Mary Blackbird 6821
Dam of Ref Sire G

G SydGen Enhance GA 8430

Born: 09/02/18 *19459867 **Tattoo: 8430** **Bull**

SydGen Exceed 3223 *
SydGen Enhance
18170041 SydGen Rita 2618

SydGen FATE 2800 #+*
SydGen Mary Blackbird 6821 +*
18794094 Tehama Mary Blackbird B244 *

SydGen Googol +*
 SydGen Forever Lady 1255 +*
 SydGen Liberty GA 8627 #*
 Fox Run Rita 9308 #
 SydGen Trust 6228 #*
 SydGen Heroine 9808 +
 A A R Ten X 7008 S A #*
 Tehama Mary Blackbird Z723 #+



CED	BW	WW	YW	SC	DOC	HP	CEM	Milk
+6	+2.3	+72	+143	+1.98	+34	+11.8	+9	+24
CW	Marb	RE	FAT	\$M	\$W	\$B	\$C	
+68	.41	+61 .37	+1.00 .37	+0.05 .35	+65	+66	+183	+302

- Co-owned with Sydenstricker Angus, Mexico MO.
- Selected by Peckenpaugh Angus as the \$17,000 ½ interest feature of the 2019 Sydenstricker Sale where he recorded the 3rd highest ADG bull in his feeding group.
- His dam joined a joint ET program of SydGen and Greiner Angus after her \$13,000 debut in the 2017 SydGen Sale, and his grandam, a \$17,000 Silverado Farms donor dam that produced embryos at \$2300 each in the 2016 Annual SydGen event.
- He boasts RADG, DOC, CW, \$F and \$B values in the top 1% with YW, SC and RE EPDs in the top 2%.

H SydGen Enhance 8435

Born: 09/04/18 *19459869 **Tattoo: 8435** **Bull**

SydGen Exceed 3223 *
SydGen Enhance
18170041 SydGen Rita 2618

SydGen FATE 2800 #+*
SydGen Miss Wix 6627 +*
18644424 SydGen Miss Wix 8850 #+

SydGen Googol +*
 SydGen Forever Lady 1255 +*
 SydGen Liberty GA 8627 #*
 Fox Run Rita 9308 #
 SydGen Trust 6228 #*
 SydGen Heroine 9808 +
 Spur Success 2801
 SydGen Miss Wix 5741 +



CED	BW	WW	YW	SC	DOC	HP	CEM	Milk
+14	-.7	+72	+130	+1.59	+20	+10.5	+15	+26
CW	Marb	RE	FAT	\$M	\$W	\$B	\$C	
+63	.40	+32 .37	+90 .37	-.009 .34	+76	+79	+156	+278

- Co-owned with Sydenstricker Angus, Mexico MO.
- Selected by Peckenpaugh Angus as the \$20,000 ½ interest feature of the 2019 Sydenstricker Sale where he recorded the #1 adj 365-day wt and the #1 adj ribeye area in his contemporary group.
- His dam is a fourth-generation embryo transplant descending from the Pathfinder grandam, SydGen Miss Wix 8850 that posted a NR 7@108 when she sold for \$11,000 to Bernard Taylor, MO.
- He carries strong calving ease credentials to compliment an EPD profile that ranks him in the top 10% or better for CED, BW, WW, YW, RADG, SC, Claw, CEM, CW, RE, \$W, \$F, \$B and \$C.



SydGen Enhance 8435
Ref Sire H



SydGen Miss Wix 8850
Pathfinder grandam of Reference Sire H

Introducing Our Newest Herd Sire Aquisitions

I Baldrige Elroy E546

Born: 06/03/17 19109248 Freeze Brand: E546 Bull

G A R Prophet #+*
Baldrige Beast Mode B074 +*
 17960722 Baldrige Isabel Y69 *

Ponca Creek Black Eagle 106 *
Baldrige Blackbird Z081 +
 17314963 Baldrige Blackbird 34K

C R A Bextor 872 5205 608 #
 G A R Objective 1885 +
 Styles Upgrade J59 #*
 Baldrige Isabel T935 +
 Connealy Concrete
 T K Queen SRP P89 #
 Baldrige Bob
 Baldrige Blackbird 181H



CED	BW	WW	YW	SC	DOC	HP	CEM	Milk
+12	+4	+69	+129	+1.76	+25	I+8.6	+11	+26
CW	Marb	RE	FAT	\$M	\$W	\$B	\$C	
+53	.24	+75 .20	+78 .25	-.004 .21	+58	+68	+157	+262

- Selected by Peckenpaugh Angus from the 2019 Baldrige Bros Sale where he recorded a BW 74 lbs, Adj 205 day wt 748 lbs, WWR 106, adj 365 day wt 1385 lbs, YWR 114, IMF 5.06%, IMF ratio 106, RE 13.6, RE ratio 109, Rib Fat .23 and Fat ratio 96.
- His sire, Baldrige Beast Mode was the 2nd top-selling bull of the 2015 Baldrige Bros sale now featured at Genex. Beast Mode was the first of a succession of high-selling sons of Baldrige Isabel Y69 that includes the \$580,000 Baldrige Colonel C251.



Baldrige Beast Mode B074
 Sire of Reference Sire I

J Montana Example 7069

Born: 04/01/17 +*18844727 Tattoo: 7069 Bull

Baldrige Waylon W34 #*
Baldrige Titan A139 +*
 17821946 Baldrige Forever Lady T269

G A R Progress #+*
Montana Rita B026 +*
 17890136 Riverbend Rita Y606 +*

GAR-EGL Protege #+*
 Baldrige Blackcap T163 *
 Baldrige Rapid R31
 Baldrige Forever Lady P164
 G A R Predestined #*
 G A R Objective 2345 *
 Summitcrest Complete 1P55 #*
 Riverbend Rita S241 +



CED	BW	WW	YW	SC	DOC	HP	CEM	Milk
+8	-.1	+76	+137	+3.7	+17	+15.1	+9	+17
CW	Marb	RE	FAT	\$M	\$W	\$B	\$C	
+51	.41	+1.06 .37	+56 .37	+0.51 .35	+60	+68	+167	+277

- Example gained National attention as the \$30,500 top-selling bull of the Nov 2018 Montana Ranch Bull & Female Sale. He is an embryo transplant son of the \$100,000 Baldrige Titan A139 from a sixth-generation embryo transplant donor dam from the famed Riverbend Rita tribe.
- His dam, by GAR Progress, is stacked for carcass excellence with a progeny IMF 3@111. Example himself posted an IMF of 5.24% to ratio 140.
- Calving ease, growth, fertility and carcass are all rolled into one tremendous EPD profile boasting WW, YW, RADG, Marb EPDs and \$G, \$B and \$C values in the top 10% or better.
- Future Peckenpaugh sales will feature sons of this dynamic young super-star.



Montana Example 7069 • Ref Sire J

K VVF Leachman Valley 0059

Born: 05/15/19 19740174 Tattoo: 0059 Bull

N Bar Emulation EXT #*
Leachman Right Time #+
 11750711 Leachman Erica 0025

Deer Valley All In #*
Ressler Elba 513
 18251852 Mogck Elba 2019

Emulation N Bar 5522 #
 N Bar Primrose 2424
 Tehama Bando 155 #
 Leachman Erica 8058
 A A R Ten X 7008 S A #*
 Deer Valley Rita 0274 +*
 S A V Pay Day 3261
 MOGCK Elba 976



CED	BW	WW	YW	SC	DOC	HP	CEM	Milk
+0	+2.5	+59	+100	+1.17	+14	+13.1	+3	+28
CW	Marb	RE	FAT	\$M	\$W	\$B	\$C	
+45	.43	+36 .39	+42 .39	-.034 .35	+56	+62	+122	+214

- Selected for Peckenpaugh Angus at the North Dakota Angus Association Select Bull and Female Sale. On recommendation of Rod Geppert this bull was a \$6500 1/2 interest standout presented by Valley View Farms, Kindred, ND where he recorded individual performance of BW 75 lbs, 205-day wt 810 lbs, 365-day wt 1285 lbs and a WDA 3.52. He is described as phenotypically flawless with perfect feet and legs.
- He is sired by the \$160,000 foundation Angus Pathfinder sire Leachman Right Time while his maternal grandsire, Deer Valley All In is a Select Sires feature and a full brother to the \$110,000 VAR Discovery 2240. They share a grandam that is the mother of the former #1 Marbling bull, GAR Progress.



VVF Leachman Valley 0059 • Ref Sire K

Peckenpaugh Angus Two Year Old Bulls

Lot 1 - CE WWR 108



Lot 1

- Individual Performance: BW 84 lbs, BWR 99, 205 Wt. 729 lbs, WWR 108, 365 Wt. 1019 lbs, YWR 103.
- Dam's Production: BR 1@99, NR 1@108, YR 1@103. REA 1@102.
- Adjusted Ultrasound Scan Data: %IMF 2.59, REA 11.2, Ratio 102, Rib Fat .20, Rump Fat .25.
- A high performing calving ease prospect with a familiar pedigree that should take out any guesswork.
- **Recommended for heifers or cows.**

1 Pecks Double Vision 9139

Born:	19867990	Tattoo:	9139	Bull
Jindra Double Vision #*	Connealy Reflection #			
Jindra Double Vision J 342	Hoff Rachel 8312 405 +			
18380903 Jindra Rosella J 151 342	Connealy Guinness #*			
	Jindra Rosella J 825 151			
	SydGen C C & 7 #*			
Hoover CC&7 H421 *	Miss Blackcap Ellston F500 #			
Ms Pecks McBee 426	G A R Grid Maker #+*			
18317967 Ms Pecks McBee 917	Ms Pecks Flash McBee 5246			

CED	BW	WW	YW	SC	DOC	HP	CEM	Milk			
+10	+3	+54	+94	+1.26	+15	+7.7	+16	+29			
CW	Marb	RE	FAT	\$M	\$W	\$B	\$C				
+31	.39	+60	.35	+37	.35	+018	.33	+59	+64	+113	+206

2 Pecks Perfect Balance 9146

Born:	19873510	Tattoo:	9146	Bull
V A R Discovery 2240 #*	A A R Ten X 7008 S A #*			
44 Perfect Balance 5834 +*	Deer Valley Rita 0308 +*			
18353122 Rita 0245 of Rita 7068 5M2 +	Rito Revenue 5M2 of 2536 Pre #+*			
	Rita 7068 of Rita 5FH8 Obj +			
	WMR Timeless 458 #			
Montana Timeless 426 SF #	SF Barbara 033			
Ms Pecks Blackbird Queen 779	Hoover CC&7 H421 *			
19614809 Ms Pecks Blackbird Queen 455	Ms Pecks Blackbird Queen 915			

CED	BW	WW	YW	SC	DOC	HP	CEM	Milk			
+11	+1.5	+67	+113	+39	+32	+7.7	+12	+37			
CW	Marb	RE	FAT	\$M	\$W	\$B	\$C				
+57	.39	+56	.35	+58	.35	+014	.33	+62	+84	+148	+254

Lot 2 - CE #5 IMF-Ratio 126 #1 \$W +84 WWR 107 YRWR 108



Lot 2

- Individual Performance: BW 74 lbs, BWR 96, 205 Wt. 717 lbs, WWR 107, 365 Wt. 1061 lbs, YWR 108.
- Dam's Production: BR 1@96, NR 1@107, YR 1@108. IMF 1@126, REA 1@103.
- Adjusted Ultrasound Scan Data: %IMF 3.50, Ratio 126, REA 11.3, Ratio 103, Rib Fat .20, Rump Fat .24.
- Born unassisted out of a first-calf heifer.
- He recorded the #1 highest \$W value in the sale offering ranking in the top 4% among non-parent bulls.
- **Recommended for heifers or cows.**

Peckenpaugh Angus Two Year Old Bulls

Lot 2
WWR 108
REA Ratio 125



- Individual Performance: BW 85 lbs, 205 Wt. 728 lbs, WWR 108, 365 Wt. 1013 lbs, YWR 102.
- Dam's Production: NR 7@102, YR 5@102. IMF 5@100, REA 5@101, Rib Fat 5@73, Rump Fat 5@84.
- Adjusted Ultrasound Scan Data: %IMF 2.44, REA 13.8, Ratio 125, Rib Fat .15, Ratio 79, Rump Fat .23.
- His maternal brother was the \$3250 herd sire selection of HT Albrecht, DeSmet SD in 2018.
- He recorded the #2 largest ribeye area in the sale offering.

Lot 3

3 Pecks Electrify 9110

Born: 03/23/19 **19867968** **Tattoo: 9110** **Bull**

Hoover Electrify
Hoover Electrify M34
17603593 Elbamere Queen Ellston J10

G 13 Structure #
KMD Lass 70
15795932 KMD Governess 1014

Basin Excitement #*
 Blkcp Empress Ellston D241
 SydGen C C & 7 #*
 Elbamere Queen S36 #
 TC Stockman 365 #
 G 13 Traveler 9428 #
 Bon View Ext 473 356
 D C C Miss Expo 201D



CED	BW	WW	YW	SC	DOC	HP	CEM	Milk	
-9	+3.9	+43	+71	+1.04	+20	+7.9	+4	+14	
CW	Marb	RE	FAT	\$M	\$W	\$B	\$C		
+16	.38	+41 .34	+41 .34	-.030	.32	+26	+24	+96	+151

4 Pecks Perfect Balance 9154

Born: 04/04/19 **19922067** **Tattoo: 9154** **Bull**

V A R Discovery 2240 #*
44 Perfect Balance 5834 +*
18353122 Rita 0245 of Rita 7068 5M2 +

Montana Timeless 426 SF *
Ms Pecks Pride 741
19919047 Ms Pecks Pride 372

A A R Ten X 7008 S A #*
 Deer Valley Rita 0308 +*
 Rito Revenue 5M2 of 2536 Pre #+*
 Rita 7068 of Rita 5FH8 Obj +
 WMR Timeless 458 #
 SF Barbara 033
 Hoover CC&7 H421 *
 Miss Pecks Pride 012



CED	BW	WW	YW	SC	DOC	HP	CEM	Milk
+12	+2	+59	+110	NA	NA	NA	+11	+32
CW	Marb	RE	FAT	\$M	\$W	\$B	\$C	
NA	NA	NA	NA	+60	+65	NA	NA	

Lot 4
#1 YW
#2 WW
#3 CED



- Individual Performance: BW 79 lbs, 205 Wt. 780 lbs, WWR 103, 365 Wt. 1183 lbs, YWR 105.
- Dam's Production: NR 1@103, YR 1@105.
- Born unassisted out of a first-calf heifer.
- He recorded the #2 heaviest adj 205-day wt, the #1 adj 365-day wt and shares the #3 highest CED EPD in the sale offering.
- **Recommended for heifers or cows.**

Peckenpaugh Angus Two Year Old Bulls



Pecks Timeless 426 709

\$5000 maternal brother to lot 6 chosen by Peckenpaugh Ranch



Pecks Sunrise 884

\$4000 maternal brother to lot 7 selected by Kurt Hoffman, SD



Lot 5

5 Pecks Double Vision 984

Born:	19867995	Tattoo:	984	Bull
Jindra Double Vision #*	Connealy Reflection #			
Jindra Double Vision J 342	Hoff Rachel 8312 405 +			
18380903 Jindra Rosella J 151 342	Connealy Guinness #*			
	Jindra Rosella J 825 151			
	Vermilion Dateline 7078 #			
	Sik Blueblood Lady 37376			
	Mytty In Focus #*			
	MS PecksTC Gunsmoke 5234			
Pecks VRD 967				
Ms Pecks Blackclass 4133				
19144444 Ms Pecks GS In Focus 7235				

CED	BW	WW	YW	SC	DOC	HP	CEM	Milk			
+6	+6	+67	+111	+16	+21	+12.7	+8	+22			
CW	Marb	RE	FAT	\$M	\$W	\$B	\$C				
+47	.37	+.89	.33	+.33	.34	+.071	.31	+63	+69	+146	+252

- Individual Performance: BW 84 lbs, BWR 99, 205 Wt. 743 lbs, WWR 111, 365 Wt. 1117 lbs, YWR 113.
- Dam's Production: BR 2@100, NR 2@106, YR 1@113. IMF 2@108, REA 2@109.
- Adjusted Ultrasound Scan Data: %IMF 3.22, Ratio 116, REA 13.0, Ratio 118, Rib Fat .30, Rump Fat .22.
- This bull is a real curve bender, both in EPD values and individual performance. He recorded the #4 heaviest 365-day wt and posted the #4 largest ribeye area in the sale offering.
- Recommended for heifers or cows.**

6 Pecks Double Vision 9172

Born:	19867992	Tattoo:	9172	Bull
Jindra Double Vision #*	Connealy Reflection #			
Jindra Double Vision J 342	Hoff Rachel 8312 405 +			
18380903 Jindra Rosella J 151 342	Connealy Guinness #*			
	Jindra Rosella J 825 151			
	SylGen C C & 7 #*			
	Miss Blackcap Ellston F500 #			
	B A Gunsmoke Y014			
	Ms Pecks VRD EXT 4303			
Hoover CC&7 H421 *				
Ms Pecks Pride 325				
17879827 Ms Pecks GS Pride 848				

CED	BW	WW	YW	SC	DOC	HP	CEM	Milk			
+4	+2.5	+60	+100	+52	+28	+8.3	+7	+18			
CW	Marb	RE	FAT	\$M	\$W	\$B	\$C				
+50	.37	+.37	.33	+.37	.34	+.027	.31	+58	+53	+133	+231

- Individual Performance: BW 87 lbs, 205 Wt. 751 lbs, WWR 112, 365 Wt. 1047 lbs, YWR 106.
- Dam's Production: BR 4@96, NR 4@98, YR 4@101. REA 3@102, Rib Fat 3@92, Rump Fat 3@91. Calving Interval 4@366 days.
- Adjusted Ultrasound Scan Data: %IMF 2.29, REA 11.4, Ratio 104, Rib Fat .14, Ratio 74, Rump Fat .20, Ratio 100.
- His maternal brother was the #1 heaviest adj yearling wt of the 2019 sale offering selling to Peckenpaugh Ranch, SD at \$5000. Other brothers included the \$4500 choice of Terry Spilde, Highmore SD in 2020 and the \$3750 selection of Lyle and Louise Vander Vorste, Pollock SD in 2018.

7 Pecks Double Vision 9136

Born:	19867985	Tattoo:	9136	Bull
Jindra Double Vision #*	Connealy Reflection #			
Jindra Double Vision J 342	Hoff Rachel 8312 405 +			
18380903 Jindra Rosella J 151 342	Connealy Guinness #*			
	Jindra Rosella J 825 151			
	G A R Retail Product #			
	Executa of Conanga 939 #			
	Mr Pecks Flash Rancher 2317			
	Ms Pecks 365 Traveler 3310			
Connealy Mentor 7374 #*				
Miss Pecks Blackbird 115				
17338223 Ms Pecks Flash 365 5229				

CED	BW	WW	YW	SC	DOC	HP	CEM	Milk			
+4	+1.2	+45	+72	+84	+18	+10.1	+5	+26			
CW	Marb	RE	FAT	\$M	\$W	\$B	\$C				
+30	.40	+.58	.36	+.15	.36	+.042	.33	+47	+51	+110	+190

- Individual Performance: BW 84 lbs, BWR 99, 205 Wt. 746 lbs, WWR 111, 365 Wt. 970 lbs, YWR 98.
- Dam's Production: BR 5@99, NR 5@106, YR 3@98. IMF 3@111, REA 3@107.
- Adjusted Ultrasound Scan Data: %IMF 3.40, Ratio 123, REA 11.8, Ratio 107, Rib Fat .23, Rump Fat .26.
- His maternal sister posted individual performance of BWR 94 and WWR 111 and was systematically retained in the herd. His maternal brother is an alumnus of the 2017 sale, selling to David Wrolson, Farwell MN while Kurt Hoffman, Dell Rapids SD chose a brother in 2020 at \$4000.

8 Pecks Perfect Balance 9207

Born:	19868004	Tattoo:	9207	Bull
V A R Discovery 2240 #*	A A R Ten X 7008 S A #*			
44 Perfect Balance 5834 +*	Deer Valley Rita 0308 +*			
18353122 Rita 0245 of Rita 7068 5M2 +	Rito Revenue 5M2 of 2536 Pre #**			
	Rita 7068 of Rita 5FH8 Obj +			
	WMR Timeless 458 #			
	SF Barbara 033			
	Leachman Sunrise A144Z +*			
	Miss Pecks Mindy 184			
Montana Timeless 426 SF *				
Ms Pecks Mindy 702				
18836760 Ms Pecks Mindy 450				

CED	BW	WW	YW	SC	DOC	HP	CEM	Milk			
+7	+1.2	+68	+121	+41	+25	+10.1	+9	+24			
CW	Marb	RE	FAT	\$M	\$W	\$B	\$C				
+56	.40	+.75	.37	+.82	.36	-.005	.34	+43	+67	+163	+254

- Individual Performance: BW 80 lbs, 205 Wt. 802 lbs, WWR 119, 365 Wt. 1146 lbs, YWR 116.
- Dam's Production: NR 1@119, YR 1@116. REA 1@135, Rib Fat 1@79.
- Adjusted Ultrasound Scan Data: %IMF 2.54, REA 14.8, Ratio 135, Rib Fat .15, Ratio 79, Rump Fat .21.
- This individual performance champion was born unassisted out of a first-calf heifer.
- He posted the #1 heaviest adj 205-day wt, the #2 heaviest adj 365-day wt, the #1 largest ribeye area and shares the #2 highest \$B value in the sale offering.
- Recommended for heifers or cows.**

Peckenpaugh Angus Two Year Old Bulls

Lot 9 - CE

WWR 110

IMF Ratio 118

Lot 10 - CE

WWR 112

Lot 11 - CE

WWR 113

REA Ratio 112

Lot 12 - WWR 110

REA Ratio 112



Lot 9

9 Pecks Upward 9168

Born:	19868013	Tattoo:	9168	Bull
Sitz Upward 307R #	Connealy Onward #*			
Montana Upward 533 SF *	Sitz Henrietta Pride 81M			
18191275 SF Miss 3437 +*	Connealy Consensus 7229 **			
	SF Miss 975 +*			
Montana Ten X B002 *	A A R Ten X 7008 S A #*			
Ms Pecks Blackbird Queen 621	MGR Rita 1178 +			
19342749 Ms Pecks Blackbird Queen 915	A A Right Line 235			
	Dahls Blackbird Queen 148			

CED	BW	WW	YW	SC	DOC	HP	CEM	Milk
I+7	I+7	I+56	I+87	I+.65	I+19	I+11.3	I+5	I+30
CW	Marb	RE	FAT	\$M	\$W	\$B	\$C	
I+31	.16	I+.73 .14	I+.37 .15	I+.034 .14	+82	+68	+123	+242

- Individual Performance: BW 83 lbs, 205 Wt. 736 lbs, WWR 110, 365 Wt. 968 lbs, YWR 98.
- Dam's Production: NR 1@110, YR 1@98, IMF 1@118, Rump Fat 1@100.
- Adjusted Ultrasound Scan Data: %IMF 3.28, Ratio 118, REA 10.2, Rib Fat .23, Rump Fat .20, Ratio 100.
- One of the top bulls in the offering for his combination of individual preweaning growth and IMF%.
- **Recommended for heifers or cows.**

10 Pecks Design 9199

Born:	19873512	Tattoo:	9199	Bull
BA New Design 316	Sua New Design 435 RR 9654			
BA New Design 501	BA RH Lauria 176			
18346134 BA Lady Legend 356	Sua Legend U8404 +			
	B A Liza 954			
Montana Timeless 426 SF *	WMR Timeless 458 #			
Ms Pecks Coquette Pride 766	SF Barbara 033			
19614795 Ms Pecks Coquette Pride 072	Pecks Rightway Fame 7227			
	Mohnen Coquette Pride 523			

CED	BW	WW	YW	SC	DOC	HP	CEM	Milk
+12	-.5	+30	+51	+50	+27	+12.3	+14	+27
CW	Marb	RE	FAT	\$M	\$W	\$B	\$C	
+2	.36	+44 .32	+13 .33	+038 .30	+63	+41	+63	+145

- Individual Performance: BW 75 lbs, BWR 98, 205 Wt. 755 lbs, WWR 112, 365 Wt. 1022 lbs, YWR 103.
- Dam's Production: BR 1@98, NR 1@112, YR 1@103, IMF 1@104.
- Adjusted Ultrasound Scan Data: %IMF 2.87, Ratio 104, REA 10.5, Rib Fat .24, Rump Fat .27.
- Born unassisted out of a first-calf heifer, he demonstrated a modest birth weight with astonishing performance and carcass measures.
- He recorded the #5 heaviest adj 205-day wt and shares the #3 highest CED EPD in the sale offering.
- **Recommended for heifers or cows.**

11 Pecks Electrify 9135

Born:	19873505	Tattoo:	9135	Bull
Hoover Electrify	Basin Excitement #*			
Hoover Electrify M34	Blkcp Empress Ellston D241			
17603593 Elbamere Queen Ellston J10	SydGen C C & 7 #*			
	Elbamere Queen S36 #			
HARB Pendleton 765 J H #	S A V Final Answer 0035 #**			
Ms Pecks Lady 036	H A R B Black Lady 375 J H #			
16861633 Ms Pecks Lady 807 #	Pecks Gunsmoke Stats 5253			
	Larkota Lady 309			

CED	BW	WW	YW	SC	DOC	HP	CEM	Milk
+11	-1.3	+43	+85	+1.51	+18	+15.6	+12	+27
CW	Marb	RE	FAT	\$M	\$W	\$B	\$C	
+47	.39	+35 .36	+57 .36	-.006 .33	+56	+47	+139	+236

- Individual Performance: BW 85 lbs, BWR 100, 205 Wt. 756 lbs, WWR 113, 365 Wt. 1073 lbs, YWR 109.
- Dam's Production: BR 3@97, NR 3@111, YR 3@105. Calving Interval 6@361 days.
- Adjusted Ultrasound Scan Data: %IMF 2.11, REA 12.3, Ratio 112, Rib Fat .05, Ratio 26, Rump Fat .11, Ratio 55.
- His maternal brother was the #1 CED and #1 BW EPD bull of the 2019 sale selling at \$4000 to Kurt Hoffman, Dell Rapids SD.
- He recorded the #4 heaviest adj 205-day wt and shares the #1 lowest BW EPD in the sale offering.
- **Recommended for heifers or cows.**

12 Pecks Electrify 9117

Born:	19867999	Tattoo:	9117	Bull
Hoover Electrify	Basin Excitement #*			
Hoover Electrify M34	Blkcp Empress Ellston D241			
17603593 Elbamere Queen Ellston J10	SydGen C C & 7 #*			
	Elbamere Queen S36 #			
Hoover Electrify M34	Hoover Electrify			
Ms Pecks Erica 5153	Elbamere Queen Ellston J10			
19077319 Ms Pecks Erica 171	B/R New Frontier 095 #+			
	Fortunes RT Erica 754 #+			

CED	BW	WW	YW	SC	DOC	HP	CEM	Milk
+0	+3.2	+68	+125	+2.01	+36	+15.3	+4	+19
CW	Marb	RE	FAT	\$M	\$W	\$B	\$C	
+65	.29	+29 .25	+77 .27	+007 .24	+57	+52	+157	+261

- Individual Performance: BW 93 lbs, 205 Wt. 741 lbs, WWR 110, 365 Wt. 1133 lbs, YWR 114.
- Dam's Production: NR 2@108, YR 2@110, REA 2@109. Calving Interval 3@344 days.
- Adjusted Ultrasound Scan Data: %IMF 2.37, REA 12.3, Ratio 112, Rib Fat .21, Rump Fat .19, Ratio 95.
- He recorded the #3 heaviest adj 365-day wt as well as the #2 highest \$C value in the sale offering.
- His EPD profile includes a top 20% WW, top 15% YW, top 2% SC, top 1% Doc with \$B and \$C values in the top 15%.

Peckenpaugh Angus Two Year Old Bulls

Lot 13 - CE
WWR 104
YWR 104
REA Ratio 106



Lot 13

- Individual Performance: BW 80 lbs, BWR 99, 205 Wt. 681 lbs, WWR 104, 365 Wt. 996 lbs, YWR 104.
- Dam's Production: BR 1@99, NR 1@104, YR 1@104. REA 1@106, Rib Fat 1@86, Rump Fat 1@100.
- Adjusted Ultrasound Scan Data: %IMF 2.25, REA 13.1, Ratio 106, Rib Fat .12, Ratio 86, Rump Fat .19, Ratio 100.
- This calving ease prospect was born unassisted out of a first-calf heifer.
- He posted the #3 largest ribeye area measurement in the sale offering.
- **Recommended for heifers or cows.**

13 Pecks Perfect Balance 994

Born: 03/22/19	19868018	Tattoo: 994	Bull
BA New Design 316	Sua New Design 435 RR 9654		
BA New Design 501	BA RH Lauria 176		
18346134 BA Lady Legend 356	Sua Legend U8404 +		
	B A Liza 954		
	WMR Timeless 458 #		
Montana Timeless 426 SF *	SF Barbara 033		
Ms Pecks Lass 7214	W C C Special Design L309 #**		
19719193 Ms Pecks Lass 431	Ms Pecks 6PV31 Lass 909		

CED	BW	WW	YW	SC	DOC	HP	CEM	Milk			
+11	-.6	+44	+69	-.08	+26	+8.4	+14	+28			
CW	Marb	RE	FAT	\$M	\$W	\$B	\$C				
+25	.35	+.26	.32	+.48	.32	+.026	.29	+67	+58	+88	+181

14 Pecks Timeless 977

Born: 03/16/19	19868001	Tattoo: 977	Bull
WMR Timeless 458 #	Leachman Right Time 338-5605 #+		
Montana Timeless 426 SF *	WMR Blackcap 521		
17882038 SF Barbara 033	S A V Final Answer 0035 #**		
	SF Barbara 819 #+		
	SydGen C C & 7 #**		
Hoover CC&7 H421 *	Miss Blackcap Ellston F500 #		
Ms Pecks Edella 548	Sinclair IN Time 6BT2		
18679810 Ms Pecks 6BT2 Edella 930	Dahls Edella 348		

CED	BW	WW	YW	SC	DOC	HP	CEM	Milk			
+10	+.4	+58	+99	+1.17	+34	+8.3	+11	+23			
CW	Marb	RE	FAT	\$M	\$W	\$B	\$C				
+34	.39	-.03	.35	+.60	.35	+.017	.33	+62	+61	+89	+177

Lot 14 - CE
WWR 103
REA Ratio 104



Lot 14

- Individual Performance: BW 86 lbs, 205 Wt. 694 lbs, WWR 103, 365 Wt. 972 lbs, YWR 98.
- Dam's Production: NR 2@104, YR 1@98. REA 1@104. Calving Interval 2@314 days.
- Adjusted Ultrasound Scan Data: %IMF 1.89, REA 11.4, Ratio 104, Rib Fat .21, Rump Fat .24.
- His sire, Montana Timeless 426 SF, was selected by Peckenpaugh Angus as the \$18,500 feature of the 2015 Montana Angus Ranch Sale where he posted a WWR 108 and YWR 106 with a RE ratio 109, Rib Fat ratio 70 and Rump Fat ratio 58.
- **Recommended for heifers or cows.**

Peckenpaugh Angus Two Year Old Bulls



Pecks H421 543
\$11,000 sire of lot 15 selected by Peckenpaugh Ranch, SD

- Individual Performance: BW 90 lbs, 205 Wt. 684 lbs, WWR 102, 365 Wt. 1062 lbs, YWR 108.
- Dam's Production: NR 3@98, YR 3@100.
- Adjusted Ultrasound Scan Data: %IMF 2.11, REA 10.6, Rib Fat .14, Ratio 74, Rump Fat .18, Ratio 90.
- His sire, Pecks H421 543 was the \$11,000 top-selling bull of the 2017 auction chosen by Peckenpaugh Ranch, Carthage SD. He was born unassisted out of a first-calf heifer and recorded a WWR 106, YWR 107 and IMF ratio 102.
- **Recommended for larger heifers or cows.**



15 Pecks H421 543 978

Born: 03/16/19	19868024	Tattoo: 978	Bull
Hoover CC&7 H421 *	SydGen C C & 7 #*		
Pecks H421 543	Miss Blackcap Ellston F500 #		
18635220 Ms Pecks Pride 0129	Sinclair Added Value 6PV31		
	Ms Peck Pride 802		
	HARB Pendleton 765 J H #		
Pecks Pendleton 112	Ms Pecks Polly 925		
Ms Pecks Pride 347	TC Aberdeen 759 #		
18806892 Ms Pecks Pride 147	Ms Pecks Rightline Pride6258		

CED	BW	WW	YW	SC	DOC	HP	CEM	Milk			
+7	+1.3	+51	+99	+1.18	+19	+6.8	+10	+37			
CW	Marb	RE	FAT	\$M	\$W	\$B	\$C				
+45	.35	+.27	.31	+.34	.31	-.006	.29	+54	+64	+130	+223

16 Pecks Pepper 912

Born: 02/13/19	19867998	Tattoo: 912	Bull
A A R Ten X 7008 S A #*	Mytty In Focus #*		
Ponca Creek Pepper *	A A R Lady Kelton 5551 #		
17417464 Ponca Creek Blackbird 955 #	Connealy All Around #*		
	Ponca Creek Blackbird 675 #		
	SydGen C C & 7 #*		
Hoover CC&7 H421 *	Miss Blackcap Ellston F500 #		
Ms Pecks Edella 334	WAR Alliance 9126 6006 #		
17879824 Ms Pecks Alliance Edella7206	Dahls Edella 348		

CED	BW	WW	YW	SC	DOC	HP	CEM	Milk			
+7	+9	+70	+126	+1.56	+31	+10.7	+12	+23			
CW	Marb	RE	FAT	\$M	\$W	\$B	\$C				
+48	.39	+.41	.35	+.54	.35	+.018	.31	+57	+68	+133	+230

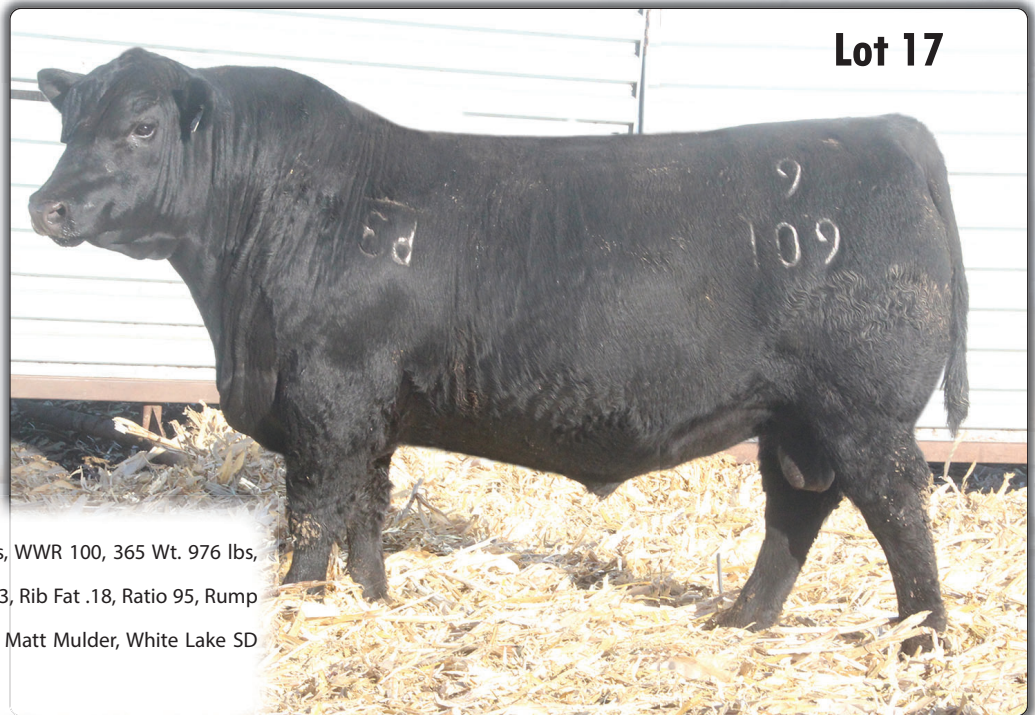
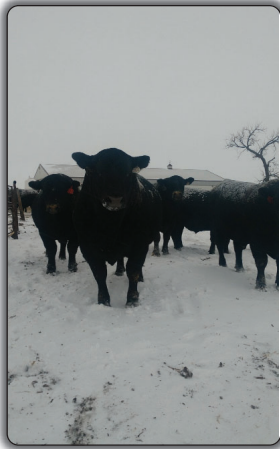


Pecks Timeless 780
\$7000 maternal brother to lot 16 selected by Gary Utman, IA

- Individual Performance: BW 82 lbs, BWR 96, 205 Wt. 677 lbs, WWR 101, 365 Wt. 1051 lbs, YWR 107.
- Dam's Production: BR 2@99, NR 2@110, YR 2@110. REA 1@102.
- Actual Ultrasound Scan Data: %IMF 2.55, REA 13.8, Rib Fat .28, Rump Fat .40.
- He is sired by Ponca Creek Pepper, featured on the ORigen roster that is a performance and carcass trait standout backed by three generations of Pathfinder dams. He posts 9 traits in the top 25% of the Angus breed.
- His maternal brother was the \$7000 herd sire selection of Gary Utman, Modale IA from the 2019 sale offering.
- He recorded the #2 highest WW and YW EPDs in the sale offering.
- **Recommended for larger heifers or cows.**



Peckenpaugh Angus Two Year Old Bulls



Lot 17

- Individual Performance: BW 88 lbs, 205 Wt. 675 lbs, WWR 100, 365 Wt. 976 lbs, YWR 98.
- Adjusted Ultrasound Scan Data: %IMF 2.00, REA 10.3, Rib Fat .18, Ratio 95, Rump Fat .19, Ratio 95.
- His maternal brother was the herd sire selection of Matt Mulder, White Lake SD from the 2017 sale offering.

17 Pecks Double Vision 9109

Born: 03/27/19 19867988 Tattoo: 9109 Bull

Jindra Double Vision #*
Jindra Double Vision J 342
 18380903 Jindra Rosella J 151 342

Pecks EXT 932
Ms Pecks Ext 237
 17461959 Ms Pecks GT Fame 3324

Connealy Reflection #
 Hoff Rachel 8312 405 +
 Connealy Guinness #*
 Jindra Rosella J 825 151
 N Bar Emulation EXT #*
 Mohnen Blackcap 580
 Mogck Fame C729
 Ms AP General Flash 1309



CED	BW	WW	YW	SC	DOC	HP	CEM	Milk			
+6	+1.6	+45	+79	+55	+19	+15.3	+6	+25			
CW		Marb		RE		FAT		\$M	\$W	\$B	\$C
+24		.38		+.51 .34		+.19 .35		+63	+47	+111	+207

18 Pecks Double Vision 950

Born: 03/01/19 19873502 Tattoo: 950 Bull

Jindra Double Vision #*
Jindra Double Vision J 342
 18380903 Jindra Rosella J 151 342

Hoover CC&7 H421 *
Miss Pecks Rita 339
 18432243 Ms Pecks Rita 0130

Connealy Reflection #
 Hoff Rachel 8312 405 +
 Connealy Guinness #*
 Jindra Rosella J 825 151
 SydGen CC & 7 #*
 Miss Blackcap Ellston F500 #
 KMD Alliance 780
 Sik's Fame 7981



CED	BW	WW	YW	SC	DOC	HP	CEM	Milk					
+9	-1.3	+39	+70	+38	+15	+10.7	+9	+22					
CW		Marb		RE		FAT		\$M	\$W	\$B	\$C		
+15		.38		+.34 .34		+.10 .34		+014	.31	+51	+40	+88	+165



Pecks 255 Ranger 887
 \$6000 maternal brother to lot 18
 selected by Gary Utman, IA



Lot 18

- Individual Performance: BW 84 lbs, BWR 99, 205 Wt. 686 lbs, WWR 102, 365 Wt. 1024 lbs, YWR 103.
- Dam's Production: NR 4@98, YR 4@100. Calving Interval 5@356 days.
- Adjusted Ultrasound Scan Data: %IMF 2.79, Ratio 101, REA 11.3, Ratio 103, Rib Fat .26, Rump Fat .29.
- His maternal brothers include the \$6000 choice of Gary Utman, Modale IA in 2020; \$6000 selection of Loren Gehm, De Smet SD in 2019 and the herd sire choice of Jordan Meyer, Cavour SD in 2017.
- He shares the #1 lowest BW EPD in the sale offering.
- **Recommended for heifers or cows.**

Peckenpaugh Angus Two Year Old Bulls



**Pecks 255
Ranger 867**
\$6000 maternal brother
to lot 19
selected by
Rod Kretchmer, SD

Pecks A144Z 6137

\$6500 maternal brother
to Lot 21 selected
by Gary Utman, IA



**Pecks Timeless
426 704**

\$6500 maternal brother
to Lot 22
selected by
Gary Utman, IA



Lot 19

19 Pecks Double Vision 9158

Born: 04/06/19 19867987 Tattoo: 9158 Bull

Jindra Double Vision #*
Jindra Double Vision J 342
18380903 Jindra Rosella J 151 342

Pecks Gunsmoke Pride 7229
Ms Pecks Pride 3100
17879834 Ms Pecks Pride 873

Connealy Reflection #
Hoff Rachel 8312 405 +
Connealy Guinness #*
Jindra Rosella J 825 151
B A Gunsmoke Y014
Pride of P A F 724
Pecks VRD Blackcap 6209
Ms Pecks VRD TC Flash 5226



CED	BW	WW	YW	SC	DOC	HP	CEM	Milk
+8	-.1	+41	+75	+.77	+20	+12.4	+9	+30

CW	Marb	RE	FAT	\$M	\$W	\$B	\$C
+22	.39	+.71 .35	+.0 .35	+.043 .32	+53	+50	+113 +200

- Individual Performance: BW 87 lbs, 205 Wt. 680 lbs, WWR 101, 365 Wt. 958 lbs, YWR 97.
- Dam's Production: NR 3@97, YR 3@97. Calving Interval 4@369 days.
- Adjusted Ultrasound Scan Data: %IMF 2.43, REA 10.1, Rib Fat .20, Rump Fat .26.
- His maternal brother was the \$6000 selection of Rod Kretchmer, Cavour SD in 2020 while another was the \$4500 herd sire choice of Terry Spilde, Highmore SD in the 2018 auction.
- Recommended for heifers or cows.**

21 Pecks Double Vision 938

Born: 02/22/19 19867979 Tattoo: 938 Bull

Jindra Double Vision #
Jindra Double Vision J 342
18380903 Jindra Rosella J 151 342

TC Boom Time 434
Ms Pecks Blackbird Queen 227
17388842 Ms Pecks Blackbird Queen 866

Connealy Reflection #
Hoff Rachel 8312 405
Connealy Guinness #
Jindra Rosella J 825 151
Leachman Boom Time #
TC Quality 7122
B A Gunsmoke Y014
Dahls Blackbird Queen 148



CED	BW	WW	YW	SC	DOC	HP	CEM	Milk
+2	+1.6	+56	+110	+.97	+24	+13.3	+4	+32

CW	Marb	RE	FAT	\$M	\$W	\$B	\$C
+46	.36	+.29 .31	+.39 .32	+.013 .27	+45	+60	+127 +210

- Individual Performance: BW 91 lbs, 205 Wt. 670 lbs, WWR 100, 365 Wt. 1084 lbs, YWR 110.
- Dam's Production: NR 2@105, YR 2@109. REA 1@103.
- Actual Ultrasound Scan Data: %IMF 2.63, REA 13.2, Rib Fat .28, Rump Fat .37.
- His maternal brother posted a WWR 109, YWR 107 and was the \$6500 selection of Gary Utman, Modale IA in 2018.

20 Pecks Perfect Balance 9148

Born: 03/31/19 19873511 Tattoo: 9148 Bull

V A R Discovery 2240 #*
44 Perfect Balance 5834 +*
18353122 Rita 0245 of Rita 7068 5M2 +

Hoover Electrify M34
Ms Pecks Lady 7100
19614807 Ms Pecks Lady 3101

A A R Ten X 7008 S A #*
Deer Valley Rita 0308 +*
Rito Revenue 5M2 of 2536 Pre #*+*
Rita 7068 of Rita 5FH8 Obj +
Hoover Electrify
Elbamere Queen Ellston J10
Pecks VRD 967
CW 894 Forever Lady 0108



CED	BW	WW	YW	SC	DOC	HP	CEM	Milk
+8	-.2	+53	+94	+.43	+21	+14.7	+7	+23

CW	Marb	RE	FAT	\$M	\$W	\$B	\$C
+33	.39	+.87 .35	+.57 .35	-.002 .33	+75	+58	+139 +255

- Individual Performance: BW 69 lbs, BWR 91, 205 Wt. 707 lbs, WWR 105, 365 Wt. 989 lbs, YWR 100.
- Dam's Production: BR 1@91, NR 1@105, YR 1@100.
- Adjusted Ultrasound Scan Data: %IMF 2.48, REA 10.2, Rib Fat .08, Ratio 42, Rump Fat .18, Ratio 90.
- The #1 lowest actual birth weight bull in the sale offering that was born unassisted out of a first-calf heifer.
- Keep every daughter of this bull, he ranks in the top 15% for both HP and \$EN with an optimal milk EPD.
- Recommended for heifers or cows.**

22 Pecks Double Vision 987

Born: 03/22/19 19873504 Tattoo: 987 Bull

Jindra Double Vision #*
Jindra Double Vision J 342
18380903 Jindra Rosella J 151 342

B A R Ext Traveler 205 #
Ms Pecks Pride 074
17801291 Ms Pecks GS Pride 848

Connealy Reflection #
Hoff Rachel 8312 405 +
Connealy Guinness #*
Jindra Rosella J 825 151
N Bar Emulation EXT #*
B A R Queen Traveler 3015 #
B A Gunsmoke Y014
Ms Pecks VRD EXT 4303



CED	BW	WW	YW	SC	DOC	HP	CEM	Milk
+10	+.7	+40	+67	+.45	+4	+9.4	+10	+33

CW	Marb	RE	FAT	\$M	\$W	\$B	\$C
+32	.38	+.61 .35	+.40 .35	+.009 .32	+51	+53	+114 +199

- Individual Performance: BW 88 lbs, 205 Wt. 687 lbs, WWR 102, 365 Wt. 996 lbs, YWR 101.
- Dam's Production: NR 5@100, YR 4@98.
- Adjusted Ultrasound Scan Data: %IMF 2.21, REA 12.5, Ratio 114, Rib Fat .16, Ratio 84, Rump Fat .15, Ratio 75.
- His 2017 maternal brother was the featured lot 1 and \$6500 selection of Gary Utman, Modale IA while Terry Spilde, Highmore SD purchased both of his maternal brothers in 2015 and 2017 at \$5500 and \$4500 respectively.
- Recommended for heifers or cows.**

Peckenpaugh Angus Two Year Old Bulls



Pecks 255 Ranger 828
\$6500 maternal brother to lot 23 selected by Peckenpaugh Ranch, SD

- Individual Performance: BW 83 lbs, BWR 98, 205 Wt. 647 lbs, WWR 96, 365 Wt. 980 lbs, YWR 99.
- Dam's Production: NR 4@101, YR 4@101. IMF 3@105, REA 3@107. Calving Interval 4@344 days.
- Actual Ultrasound Scan Data: %IMF 2.17, REA 13.6, Rib Fat .29, Rump Fat .29.
- Peckenpaugh Ranch, Carthage SD has chosen two maternal brothers, one was the \$8000 2nd top-selling bull of the 2019 sale offering and another at \$6000 in 2020.
- **Recommended for heifers or cows.**



Lot 23

23 Pecks Timeless 916

Born: 02/14/19	*19867983	Tattoo: 916	Bull
WMR Timeless 458 #	Leachman Right Time 338-5605 #+		
Montana Timeless 426 SF*	WMR Blackcap 521		
17882038 SF Barbara 033	S A V Final Answer 0035 #*		
	SF Barbara 819 #+		
	SydGen C C & 7 #*		
Hoover CC&7 H421 *	Miss Blackcap Ellston F500 #		
Pecks Edella 416*	Sinclair IN Time 6BT2		
18227634 Ms Pecks 6BT2 Edella 930	Dahls Edella 348		

CED	BW	WW	YW	SC	DOC	HP	CEM	Milk
+11	+7	+43	+70	+89	+32	+8.9	+15	+27
CW	Marb	RE	FAT	\$M	\$W	\$B	\$C	
+23	.37	+12 .32	+33 .32	+074 .28	+64	+51	+81	+169



24 Pecks Perfect Balance 919

Born: 02/16/19	*19868005	Tattoo: 919	Bull
V A R Discovery 2240 #*	A A R Ten X 7008 S A #*		
44 Perfect Balance 5834 +*	Deer Valley Rita 0308 +*		
18353122 Rita 0245 of Rita 7068 5M2 +	Rito Revenue 5M2 of 2536 Pre #+*		
	Rita 7068 of Rita 5FH8 Obj +		
	HARB Pendleton 765 J H #		
	Ms Pecks Rebecca 9200		
Pecks Pendleton 136	TC Aberdeen 759 #		
Ms Pecks Bella 336	Ms Pecks Gunsmoke Stats 6216		
18778796 Ms Pecks Bella 135			

CED	BW	WW	YW	SC	DOC	HP	CEM	Milk
+8	+1.6	+63	+123	+81	+33	+11.1	+2	+27
CW	Marb	RE	FAT	\$M	\$W	\$B	\$C	
+52	.40	+88 .35	+78 .35	-002 .31	+54	+62	+162	+264



Pecks 250 764
\$6000 maternal brother to lot 24 selected by Tyler Van Overschelde, SD

- Individual Performance: BW 87 lbs, 205 Wt. 669 lbs, WWR 100, 365 Wt. 1088 lbs, YWR 110.
- Dam's Production: BR 3@98, NR 3@101, YR 3@104. REA 2@103. Calving Interval 4@352 days.
- Actual Ultrasound Scan Data: %IMF 4.53, REA 12.3, Rib Fat .39, Rump Fat .31.
- His maternal brother posted a WWR 117, YWR 112, IMF ratio 109, RE ratio 103 and sold at \$6000 to Tyler Van Overschelde, Letcher SD in 2019.
- He recorded the #4 highest \$B and is the #1 \$C bull in the sale offering.
- **Recommended for larger heifers or cows.**



Lot 24

Peckenpaugh Angus Two Year Old Bulls



Pecks Timeless 426 732

\$7000 maternal brother to lot 25 selected by Peckenpaugh Ranch, SD

Lot 26 - CE

#1 IMF Ratio 168

#1 MB EPD +1.22

Lot 27 - CE

#2 IMF Ratio 156

#1 CED EPD +13



Lot 25

25 Pecks Perfect Balance 952

Born:	*19868007	Tattoo:	952	Bull
V A R Discovery 2240 **	A A R Ten X 7008 S A #*			
44 Perfect Balance 5834 +*	Deer Valley Rita 0308 +*			
18353122 Rita 0245 of Rita 7068 5M2 +	Rito Revenue 5M2 of 2536 Pre #**			
	Rita 7068 of Rita 5FH8 Obj +			
	SydGen C C & 7 #*			
Hoover CC&7 H421 *	Miss Blackcap Ellston F500 #			
Ms Pecks Enchantress 3164	Pecks Gunsmoke Pride 7229			
18437213 Ms Pecks Enchantress 0112	Ms Pecks Enchantress 7264			

CED	BW	WW	YW	SC	DOC	HP	CEM	Milk			
+7	+1.6	+53	+103	+05	+16	+7.2	+8	+33			
CW	Marb	RE	FAT	\$M	\$W	\$B	\$C				
+33	.40	+.79	.36	+.10	.36	+.036	.33	+55	+63	+119	+209

- Individual Performance: BW 86 lbs, 205 Wt. 618 lbs, WWR 92, 365 Wt. 973 lbs, YWR 98.
- Dam's Production: NR 4@100, YR 4@101. IMF 3@111, REA 3@101.
- Actual Ultrasound Scan Data: %IMF 3.64, Ratio 131, REA 10.3, Rib Fat .36, Rump Fat .32.
- His maternal brothers include the \$7000 selection of Peckenpaugh Ranch in 2019, a \$4500 choice of Lyle and Louise Vander Vorste, Pollock SD in 2018 and the \$3500 herd sire selection of Jerome Nelson, Lake Preston SD in 2017.
- He reported the #4 highest % IMF measurement in the sale offering.
- **Recommended for larger heifers or cows.**

26 Pecks Perfect Balance 9160

Born:	19868015	Tattoo:	9160	Bull
V A R Discovery 2240 #	A A R Ten X 7008 S A #			
44 Perfect Balance 5834	Deer Valley Rita 0308			
18353122 Rita 0245 of Rita 7068 5M2	Rito Revenue 5M2 of 2536 Pre #			
	Rita 7068 of Rita 5FH8 Obj			
	V A R Discovery 2240 **			
44 Trending 4413 *	44 Ruby 2477 +*			
Ms Pecks Edella 705	Sinclair Added Value 6PV31			
19015321 Ms Pecks Edella 008	Ms Pecks Alliance Edella7206			

CED	BW	WW	YW	SC	DOC	HP	CEM	Milk			
+11	+1.4	+65	+125	+77	+24	+8.4	+8	+19			
CW	Marb	RE	FAT	\$M	\$W	\$B	\$C				
+51	.38	+1.22	.34	+.33	.34	+.060	.32	+46	+57	+163	+257

- Individual Performance: BW 72 lbs, BWR 94, 205 Wt. 693 lbs, WWR 103, 365 Wt. 997 lbs, YWR 101.
- Dam's Production: BR 1@94, NR 1@103, YR 1@101. IMF 1@168, Rump Fat 1@100.
- Adjusted Ultrasound Scan Data: %IMF 4.64, Ratio 168, REA 10.0, Rib Fat .27, Rump Fat .20, Ratio 100.
- Born unassisted out of a first-calf heifer, he demonstrated a modest birth weight with astonishing performance and carcass measures.
- He recorded the #1 %IMF measurement in the sale offering while also posting the #1 MB EPD, \$2 \$B and #3 \$C.
- **Recommended for heifers or cows.**

27 Pecks Perfect Balance 991

Born:	19868016	Tattoo:	991	Bull
V A R Discovery 2240 **	A A R Ten X 7008 S A #*			
44 Perfect Balance 5834 +*	Deer Valley Rita 0308 +*			
18353122 Rita 0245 of Rita 7068 5M2 +	Rito Revenue 5M2 of 2536 Pre #**			
	Rita 7068 of Rita 5FH8 Obj +			
	Hoover CC&7 H421 *			
Pecks CC&7 H421 250	Ms Pecks 6BT2 Edella 930			
Ms Pecks Polly 7171	HARB Pendleton 765 J H #			
19614804 Ms Pecks Polly 356	Ms Pecks Polly 925			

CED	BW	WW	YW	SC	DOC	HP	CEM	Milk			
+13	-.7	+54	+98	NA	+22	NA	+11	+31			
CW	Marb	RE	FAT	\$M	\$W	\$B	\$C				
+42	.21	+.97	.17	+.48	.21	+.032	.18	+59	+62	+148	+251

- Individual Performance: BW 70 lbs, BWR 92, 205 Wt. 669 lbs, WWR 100, 365 Wt. 917 lbs, YWR 93.
- Dam's Production: BR 1@92, NR 1@100. IMF 1@156, REA 1@105, Rump Fat 1@100.
- Adjusted Ultrasound Scan Data: %IMF 4.33, Ratio 156, REA 11.5, Ratio 105, Rib Fat .21, Rump Fat .20, Ratio 100.
- This light birth weight bull was born unassisted out of a first-calf heifer.
- He recorded the #2 highest IMF measurement in the sale offering and shares the #1 highest CED EPD.
- **Recommended for heifers or cows.**

28 Pecks Double Vision 922

Born:	19867994	Tattoo:	922	Bull
Jindra Double Vision #*	Connealy Reflection #			
Jindra Double Vision J 342	Hoff Rachel 8312 405 +			
18380903 Jindra Rosella J 151 342	Connealy Guinness #*			
	Jindra Rosella J 825 151			
	Sinclair Net Present Value #**			
Sinclair Added Value 6PV31	Sinclair Queen M 05A3 1213			
Ms Pecks Blackbird Queen 972	Bussmus Regulator X45			
19075129 Ms Pecks Blackbird Queen7260	Ms Pecks GT Gunsmoke 4326			

CED	BW	WW	YW	SC	DOC	HP	CEM	Milk			
+4	+1.9	+47	+86	-10	+16	+9.4	+6	+24			
CW	Marb	RE	FAT	\$M	\$W	\$B	\$C				
+34	.35	+.62	.30	+.25	.31	+.016	.26	+52	+45	+132	+223

- Individual Performance: BW 86 lbs, 205 Wt. 670 lbs, WWR 100, 365 Wt. 1044 lbs, YWR 106.
- Dam's Production: BR 2@99, NR 2@95, YR 1@106.
- Actual Ultrasound Scan Data: %IMF 3.08, REA 12.4, Rib Fat .31, Rump Fat .21.
- Three maternal sisters are retained in the herd.
- Maternal grandsire, Sinclair Added Value 6PV31 is a Peckenpaugh Angus herd sire that has left 15 outstanding daughters in the herd.

Peckenpaugh Angus Two Year Old Bulls



Pecks 250 6105

\$4750 maternal brother to lot 29 selected by Rod Ketchmer, SD

Lot 29

#3 CED @ +12

- Individual Performance: BW 85 lbs, BWR 100, 205 Wt. 615 lbs, WWR 92, 365 Wt. 925 lbs, YWR 94.
- Dam's Production: BR 3@100, NR 3@98, YR 3@104. IMF 2@117, REA 2@117. Calving Interval 5@355 days.
- Actual Ultrasound Scan Data: %IMF 3.70, REA 12.2, Rib Fat .22, Rump Fat .35.
- His maternal brother was the \$4750 herd sire selection of Rod Ketchmer, Cavour SD in the 2018 auction.
- He shares the #3 highest CED EPD in the sale offering.
- **Recommended for heifers or cows.**



Lot 29

29 Pecks Timeless 931

Born: 02/16/19	19867973	Tattoo: 931	Bull
WMR Timeless 458 #	Leachman Right Time 338-5605 #+		
Montana Timeless 426 SF *	WMR Blackcap 521		
17882038 SF Barbara 033	S A V Final Answer 0035 #*		
	SF Barbara 819 #+		
	Sinclair Net Present Value #+*		
Sinclair Added Value 6PV31	Sinclair Queen M 05A3 1Z13		
Ms Pecks Elbance 076	MOGCK Whispering Wind 346		
18790561 Sik Elbance 230368	Sik Elbance 23036		



CED	BW	WW	YW	SC	DOC	HP	CEM	Milk			
+12	-.2	+39	+56	-.17	+16	+9.1	+13	+28			
CW	Marb	RE	FAT	\$M	\$W	\$B	\$C				
+12	.39	+.41	.34	+.34	.34	+.049	.30	+58	+51	+82	+164

30 Pecks Timeless 907

Born: 02/10/19	19867969	Tattoo: 907	Bull
WMR Timeless 458 #	Leachman Right Time 338-5605 #+		
Montana Timeless 426 SF *	WMR Blackcap 521		
17882038 SF Barbara 033	S A V Final Answer 0035 #*		
	SF Barbara 819 #+		
	B/R New Frontier 095 #+		
Ms Pecks Pride 035	White Fence Pride H1		
16861638 Ms PecksVRD Pride 5203	A A Right Line 235		
	Pride of P A F 724		



CED	BW	WW	YW	SC	DOC	HP	CEM	Milk			
+1	+2.4	+38	+62	+.23	+25	+12.5	+10	+24			
CW	Marb	RE	FAT	\$M	\$W	\$B	\$C				
+20	.38	+.55	.33	+.35	.33	-.009	.30	+80	+37	+103	+214

Dam of Lot 30 3 IMF 105



Lot 30

- Individual Performance: BW 85 lbs, BWR 100, 205 Wt. 611 lbs, WWR 91, 365 Wt. 915 lbs, YWR 93.
- Dam's Production: BR 4@100, NR 4@101, YR 4@100. IMF 3@105, Rump Fat 3@89.
- Actual Ultrasound Scan Data: %IMF 3.64, REA 11.6, Rib Fat .15, Rump Fat .23.
- His dam was a standout in her contemporary group where she posted individual performance of BWR 97 and WWR 108.
- His maternal brothers include the herd sire choice of Terry Spilde, Highmore SD in 2019, and the \$5250 choice of Peckenpaugh Ranch, Carthage SD from the 2018 sale offering, while Bill & Steve Albrecht, DeSmet SD selected a maternal brother in 2016 at \$5500.

Peckenpaugh Angus Two Year Old Bulls

**Pecks CC&7
H421 295**

\$4000 maternal brother to lot 32 selected by Rick Eckmann, SD



Pecks Prowler 712
\$6000 maternal brother to lot 33 selected by Rod Kretchner, SD



Lot 31

Lot 31 - CE+
#1 YW EPD +129
#1 \$B +167
#3 \$C +257

Lot 33 CE #1 CED +13

31 Pecks Perfect Balance 955

Born: 03/03/19 19868014 **Tattoo: 955** Bull
V A R Discovery 2240 #*
44 Perfect Balance 5834 +*
18353122 Rita 0245 of Rita 7068 5M2 +
CAV Brilliance 618-2618
Ms Pecks Stats 474
19075132 Ms Pecks Stats 0115

A A R Ten X 7008 S A #*
Deer Valley Rita 0308 +*
Rito Revenue 5M2 of 2536 Pre #**
Rita 7068 of Rita 5FH8 Obj +
S A V Brilliance 8077 #*
Gannon Lassie F618
LaGrand Marathon 8166 +
Ms Pecks Rightway Flash 7209



CED	BW	WW	YW	SC	DOC	HP	CEM	Milk			
+6	+2	+65	+129	+56	+21	+7.7	+4	+35			
CW	Marb	RE	FAT	\$M	\$W	\$B	\$C				
+71	.40	+.54	.36	+.50	.36	+.012	.34	+40	+75	+167	+257

- Individual Performance: BW 87 lbs, 205 Wt. 667 lbs, WWR 99, 365 Wt. 1067 lbs, YWR 108.
- Dam's Production: NR 2@98, YR 1@108. Calving Interval 2@338 days.
- Adjusted Ultrasound Scan Data: %IMF 2.41, REA 9.3, Rib Fat .17, Ratio 89, Rump Fat .16, Ratio 80.
- He recorded the #1 highest YW EPD and the #1 highest \$B value in the sale offering ranking in the top 10% of the breed for both.
- Recommended for larger heifers or cows.**

33 Pecks Perfect Balance 921

Born: 02/16/19 19867976 **Tattoo: 921** Bull
V A R Discovery 2240 #*
44 Perfect Balance 5834 +*
18353122 Rita 0245 of Rita 7068 5M2 +
Sinclair Added Value 6PV31
Ms Pecks 6PV31 Lass 909
16595442 KMD Lass 70

A A R Ten X 7008 S A #*
Deer Valley Rita 0308 +*
Rito Revenue 5M2 of 2536 Pre #**
Rita 7068 of Rita 5FH8 Obj +
Sinclair Net Present Value #**
Sinclair Queen M 05A3 1213
G 13 Structure #
KMD Govenness 1014



CED	BW	WW	YW	SC	DOC	HP	CEM	Milk			
+13	-.4	+52	+97	-.13	+9	+8.3	+8	+19			
CW	Marb	RE	FAT	\$M	\$W	\$B	\$C				
+25	.40	+.84	.35	+.52	.35	+.008	.31	+56	+51	+126	+219

- Individual Performance: BW 80 lbs, BWR 95, 205 Wt. 632 lbs, WWR 94, 365 Wt. 950 lbs, YWR 96.
- Dam's Production: NR 6@98, YR 6@98. IMF 5@108, REA 5@100. Calving Interval 8@359 days.
- Actual Ultrasound Scan Data: %IMF 2.99, REA 11.8, Rib Fat .26, Rump Fat .27.
- Maternal brothers have been the herd sire selections of Rod Kretchner, Cavour SD in 2019 at \$6000, Neal Olson, Artesian SD from the 2014 sale at \$3250, Steven Neuharth, Wolsey ND at \$6000 in 2015 and Kurt Hoffman, Dell Rapids SD acquired a brother in 2017 at \$4000.
- He shares the #1 highest CED in the sale offering.
- Recommended for heifers or cows.**

32 Pecks Perfect Balance 956

Born: 03/04/19 19867972 **Tattoo: 956** Bull
V A R Discovery 2240 #*
44 Perfect Balance 5834 +*
18353122 Rita 0245 of Rita 7068 5M2 +
Pecks VRD EXT Rancher 5204
Ms Pecks Edella 9104
16598356 Dahls Edella 434

A A R Ten X 7008 S A #*
Deer Valley Rita 0308 +*
Rito Revenue 5M2 of 2536 Pre #**
Rita 7068 of Rita 5FH8 Obj +
A A Right Line 235
Ms Pecks EXT Rancher 01 PA
Plainview Alliance 94B
Dahls Edella 138



CED	BW	WW	YW	SC	DOC	HP	CEM	Milk			
+6	+1.2	+50	+91	+43	+29	+8.9	+10	+23			
CW	Marb	RE	FAT	\$M	\$W	\$B	\$C				
+35	.40	+.44	.36	+.50	.36	+.003	.33	+45	+48	+117	+197

- Individual Performance: BW 85 lbs, 205 Wt. 611 lbs, WWR 91, 365 Wt. 889 lbs, YWR 90.
- Dam's Production: BR 3@96, NR 3@102, YR 2@95. IMF 3@113, Rib Fat 3@90, Rump Fat 3@88.
- Adjusted Ultrasound Scan Data: %IMF 1.81, REA 10.7, Rib Fat .16, Ratio 84, Rump Fat .14, Ratio 70.
- His maternal brother posted individual performance of BWR 90, WWR 111, YWR 100, IMF ratio 145 and was the \$4000 herd sire selection of Rick Eckmann, Cavour SD in the 2014 auction.

34 Pecks Perfect Balance 953

Born: 03/02/19 19868008 **Tattoo: 953** Bull
V A R Discovery 2240 #*
44 Perfect Balance 5834 +*
18353122 Rita 0245 of Rita 7068 5M2 +
Hoover CC&7 H421 *
Ms Pecks Blackcap 476
18678582 Ms Pecks EXT Rightway 010

A A R Ten X 7008 S A #*
Deer Valley Rita 0308 +*
Rito Revenue 5M2 of 2536 Pre #**
Rita 7068 of Rita 5FH8 Obj +
SydGen C C & 7 #*
Miss Blackcap Ellston F500 #
Hyline Right Way 781 #
Fortunes 6015 of EXT 110 +



CED	BW	WW	YW	SC	DOC	HP	CEM	Milk			
+10	+.4	+58	+108	+.18	+32	+8.5	+7	+26			
CW	Marb	RE	FAT	\$M	\$W	\$B	\$C				
+45	.39	+.53	.36	+.16	.36	+.041	.33	+45	+62	+130	+214

- Individual Performance: BW 83 lbs, BWR 98, 205 Wt. 553 lbs, WWR 82, 365 Wt. 860 lbs, YWR 87.
- Dam's Production: BR 2@97.
- Adjusted Ultrasound Scan Data: %IMF 2.32, REA 8.8, Rib Fat .15, Ratio 79, Rump Fat .17, Ratio 85.
- This bull excels in calving ease and Docility traits. The cow business becomes a lot easier when you have that going for you.
- Recommended for heifers or cows.**

Peckenpaugh Angus Two Year Old Bulls

Lot 35

Lot 35 CE #2 MB EPD + 1.09



- Individual Performance: BW 81 lbs, BWR 95, 205 Wt. 616 lbs, WWR 92, 365 Wt. 934 lbs, YWR 95.
- Dam's Production: BR 3@96. IMF 2@106.
- Actual Ultrasound Scan Data: %IMF 4.27, REA 11.8, Rib Fat .41, Rump Fat .39.
- His maternal brother was the \$4000 selection of Kurt Hoffman, Dell Rapids SD in 2020 while his maternal sister in the herd weaned her first calf posting a BWR 1@93 and NR 1@116.
- He recorded the #2 highest MB EPD in the sale offering ranking in the top 10% among non-parent bulls in the breed.
- **Recommended for heifers or cows.**

35 Pecks Double Vision 943

Born:	19867982	Tattoo:	943	Bull
Jindra Double Vision #*	Connealy Reflection #			
Jindra Double Vision J 342	Hoff Rachel 8312 405 +			
18380903 Jindra Rosella J 151 342	Connealy Guinness #*			
	Jindra Rosella J 825 151			
	Sinclair Net Present Value #+*			
Sinclair Added Value 6PV31	Sinclair Queen M 05A3 1Z13			
Ms Pecks Pride 0128	Pecks VRD Blackcap 6209			
17800548 Ms Pecks Pride 873	Ms Pecks VRD TC Flash 5226			

CED	BW	WW	YW	SC	DOC	HP	CEM	Milk			
+8	+5	+36	+67	+93	+18	+10.8	+12	+27			
CW	Marb	RE	FAT	\$M	\$W	\$B	\$C				
+20	.36	+1.09	.31	+1.17	.32	+0.43	.28	+41	+38	+124	+202

36 Peck Double Vision 923

Born:	02/17/19	19873508	Tattoo:	923	Bull
Jindra Double Vision #*	Connealy Reflection #				
Jindra Double Vision J 342	Hoff Rachel 8312 405 +				
18380903 Jindra Rosella J 151 342	Connealy Guinness #*				
	Jindra Rosella J 825 151				
	SydGen C C & 7 #*				
Hoover CC&7 H421 *	Miss Blackcap Ellston F500 #				
Ms Pecks Pride 495	G A R Exaltation 3144 #+				
18678586 Ms Pecks Pride 013	Pride of P A F 724				

CED	BW	WW	YW	SC	DOC	HP	CEM	Milk			
+3	+1.5	+49	+82	+45	+11	+12.4	+6	+32			
CW	Marb	RE	FAT	\$M	\$W	\$B	\$C				
+22	.36	+1.09	.31	+1.17	.32	+0.43	.28	+41	+38	+124	+202



Hoover CC&7 H421
Maternal grandsire of lot 36

- Individual Performance: BW 83 lbs, BWR 98, 205 Wt. 598 lbs, WWR 89, 365 Wt. 958 lbs, YWR 97.
- Dam's Production: BR 1@98, YR 1@97.
- Actual Ultrasound Scan Data: %IMF 3.33, REA 10.6, Rib Fat .26, Rump Fat .27.
- Maternal grandsire, Hoover CC&7 H421 was selected by Peckenpaugh Angus as the featured fall bull in the 2011 Hoover Angus Sale where he posted enviable individual performance of BW 73 lbs, 205-day wt 838 lbs, WWR 122, 365-day wt 1337 lbs, and YWR 110. Multiple years of progeny records have proven H421 to be a noteworthy calving ease sire with a BWR 112@99.

Lot 36



Peckenpaugh Angus Two Year Old Bulls

Lot 37



Pecks Electrify 6101

\$5000 maternal brother to Lot 37
selected by Roger Nichols, De Smet, SD



37 Pecks Double Vision 936

Born: 02/21/19	19867991	Tattoo: 936	Bull
Jindra Double Vision #*	Connealy Reflection #		
Jindra Double Vision J 342	Hoff Rachel 8312 405 +		
18380903 Jindra Rosella J 151 342	Connealy Guinness #*		
	Jindra Rosella J 825 151		
	SydGen C C & 7 #*		
Hoover CC&7 H421 *	Miss Blackcap Ellston F500 #		
Ms Pecks Blueblood Lady 349	MOGCK Whispering Wind 346		
18432240 Sik Blueblood Lady 373768	Sik Blueblood Lady 37376		



CED	BW	WW	YW	SC	DOC	HP	CEM	Milk
+4	+2.1	+54	+93	+1.49	+30	+10.2	+7	+32
CW	Marb	RE	FAT	\$M	\$W	\$B	\$C	
+36	.36	+60 .31	+36 .31	+004 .27	+67	+63	+130	+236

- Individual Performance: BW 83 lbs, BWR 98, 205 Wt. 585 lbs, WWR 87, 365 Wt. 923 lbs, YWR 93.
- Dam's Production: YR 2@95. IMF 1@115, REA 1@101, Rib Fat 1@93, Rump Fat 1@94. Calving Interval 5@358 days.
- Actual Ultrasound Scan Data: %IMF 2.71, REA 13.2, Rib Fat .13, Rump Fat .14.
- His maternal brother was the \$5000 herd sire selection of Roger Nichols, De Smet SD in 2018.

38 Pecks Double Vision 966

Born: 03/10/19	19867986	Tattoo: 966	Bull
Jindra Double Vision #*	Connealy Reflection #		
Jindra Double Vision J 342	Hoff Rachel 8312 405 +		
18380903 Jindra Rosella J 151 342	Connealy Guinness #*		
	Jindra Rosella J 825 151		
	N Bar Emulation EXT #*		
Pecks EXT 932	Mohnen Blackcap 580		
Ms Pecks Bella 246	Bussmus Regulator X45		
17388848 Ms Pecks Regulator Stats7240 #	Roth Miss Stats 0188		



CED	BW	WW	YW	SC	DOC	HP	CEM	Milk
+2	+1.6	+45	+80	-.34	+14	+8.8	+7	+25
CW	Marb	RE	FAT	\$M	\$W	\$B	\$C	
+30	.36	+33 .32	+15 .33	+005 .30	+26	+42	+103	+160

- Individual Performance: BW 85 lbs, BWR 100, 205 Wt. 662 lbs, WWR 99, 365 Wt. 977 lbs, YWR 99.
- Dam's Production: BR 2@100, NR 2@104, YR 1@99. IMF 1@106, Rump Fat 1@90.
- Adjusted Ultrasound Scan Data: %IMF 2.94, Ratio 106, REA 9.8, Rib Fat .22, Rump Fat .18, Ratio 90.
- His Pathfinder grandam has a NR 4@106.

39 Pecks Double Vision 925

Born: 02/18/19	19867993	Tattoo: 925	Bull
Jindra Double Vision #*	Connealy Reflection #		
Jindra Double Vision J 342	Hoff Rachel 8312 405 +		
18380903 Jindra Rosella J 151 342	Connealy Guinness #*		
	Jindra Rosella J 825 151		
	SydGen C C & 7 #*		
Hoover CC&7 H421 *	Miss Blackcap Ellston F500 #		
Ms Pecks Blackbird Queen 332	Sinclair IN Time 6BT2		
17879828 Ms Pecks Blackbird Queen 832	Ms Peck VRD General 2303		



CED	BW	WW	YW	SC	DOC	HP	CEM	Milk
+1	+4.0	+56	+98	+1.36	+17	+9.0	+7	+22
CW	Marb	RE	FAT	\$M	\$W	\$B	\$C	
+42	.38	+31 .33	+34 .33	+014 .29	+46	+45	+125	+208

- Individual Performance: BW 92 lbs, 205 Wt. 645 lbs, WWR 96, 365 Wt. 989 lbs, YWR 100.
- Dam's Production: NR 2@98, YR 2@101. IMF 1@105.
- Actual Ultrasound Scan Data: %IMF 1.92, REA 12.8, Rib Fat .22, Rump Fat .23.
- A big ribeye bull stacked with generations of successful Peckenpaugh Angus walking herd sires.

40 Pecks Double Vision 917

Born: 02/14/19	19867977	Tattoo: 917	Bull
Jindra Double Vision #*	Connealy Reflection #		
Jindra Double Vision J 342	Hoff Rachel 8312 405 +		
18380903 Jindra Rosella J 151 342	Connealy Guinness #*		
	Jindra Rosella J 825 151		
	Sinclair Net Present Value #+*		
Sinclair Added Value 6PV31	Sinclair Queen M 05A3 1Z13		
Ms Pecks Rita 051	Connealy Freightliner #		
16861639 Sik Rita 79818	Sik's Fame 7981		



CED	BW	WW	YW	SC	DOC	HP	CEM	Milk
+10	-1.0	+43	+74	+80	+20	+10.3	+7	+26
CW	Marb	RE	FAT	\$M	\$W	\$B	\$C	
+40	.35	+40 .30	+55 .31	+023 .27	+68	+53	+131	+238

- Individual Performance: BW 81 lbs, BWR 95, 205 Wt. 629 lbs, WWR 94, 365 Wt. 925 lbs, YWR 94.
- Dam's Production: BR 1@95.
- Actual Ultrasound Scan Data: %IMF 2.50, REA 11.5, Rib Fat .28, Rump Fat .25.
- He has four maternal sisters each one is in production at Peckenpaugh Angus.
- He ranks in the top 10% among non-parent bulls for BW EPD.
- **Recommended for heifers or cows.**

Peckenpaugh Angus Two Year Old Bulls

Pecks Upward 893

\$5750 maternal brother to lot 41 selected by Jerry Bush, SD



CCA Discovery D40
Sire of Lot 44

Lot 43 - CE

#3 CED EPD +12
#3 BW EPD -1.2



Lot 41

41 Pecks In Time 906

Born: 02/10/19	19867996	Tattoo: 906	Bull
BT Right Time 24J #+	Leachman Right Time #+	Sua New Design 435 RR 9654	
Sinclair IN Time 6BT2	Sitz Everelda Entense 1905	BA RH Lauria 176	
15380714 N Bar Emmaline J4621 #	Gardens Prime Time #	Sua Legend U8404 +	
	N Bar Emmaline B1869	B A Liza 954	
	S A V Brilliance 8077 #*	Connealy Consensus 7229 #*	
	Gannon Lassie F618	Mra Lady 1004	
CAV Brilliance 618-2618	G A R New Design 5050 #+	Connealy Irish 0204 #*	
Ms Pecks Stats 472	Ms Pecks Regulator Flash6241	Ms Pecks Beauty 364	
19153443 Miss Pecks New Design 107			

CED	BW	WW	YW	SC	DOC	HP	CEM	Milk			
+10	+1	+44	+77	+54	+21	+10.3	+12	+23			
CW	Marb	RE	FAT	\$M	\$W	\$B	\$C				
+28	.38	.58	.33	+0.03	.33	+0.043	.29	+62	+47	+112	+207

- Individual Performance: BW 86 lbs, 205 Wt. 646 lbs, WWR 96, 365 Wt. 1001 lbs, YWR 101.
- Dam's Production: BR 3@96, NR 3@101, YR 3@105. IMF 1@105, REA 1@116. Calving Interval 3@343 days.
- Actual Ultrasound Scan Data: %IMF 3.20, REA 12.4, Rib Fat .20, Rump Fat .31.
- His maternal brothers included the \$4500 herd sire selection of Duane Harvey, Ree Heights SD in 2019 and \$5750 choice of Jerry Bush, Pierre SD in 2020.
- His sire, Sinclair IN Time 6BT2 is a 13 year old calving ease sire and cow maker with 13 daughters in the herd that have collective nursing ratio of 40@102 while boasting a \$EN value in the top 15%.
- Recommended for heifers or cows.**

42 Pecks Upward 989

Born: 03/22/19	19873509	Tattoo: 989	Bull
Sitz Upward 307R #	Connealy Onward #*	V A R Discovery 2240 #*	A A R Ten X 7008 S A #*
Montana Upward 533 SF *	Sitz Henrietta Pride 81M	CCA Discovery D40	Deer Valley Rita 0308 +*
18191275 SF Miss 3437 +*	Connealy Consensus 7229 #*	18851832 Jamesland 390 Truly 624J	Jamesland N D 1407 390J
	SF Miss 975 +*		Jamesland Truly Chg On 389J #
	WMR Timeless 458 #	Hoover CC&7 H421 #*	SydGen C C & 7 #*
Montana Timeless 426 SF *	SF Barbara 033	Ms Pecks Rebecca 314	Miss Blackcap Ellston F500 #
Ms Pecks Bella 671	CB Block Party 156 #*	17879826 Ms Pecks Rebecca 835	Sinclair Added Value 6PV31
19340019 Ms Pecks Bella 396 *	Ms Pecks Bella 144		Ms Pecks Stats Flash 2309

CED	BW	WW	YW	SC	DOC	HP	CEM	Milk			
+9	-6	+49	+85	+45	+34	+14.0	+9	+26			
CW	Marb	RE	FAT	\$M	\$W	\$B	\$C				
+42	.40	+54	.36	+39	.36	+0.036	.33	+80	+59	+131	+250

- Individual Performance: BW 86 lbs, 205 Wt. 670 lbs, WWR 100, 365 Wt. 948 lbs, YWR 96.
- Dam's Production: NR 1@100, YR 1@96.
- Adjusted Ultrasound Scan Data: %IMF 2.50, REA 10.9, Rib Fat .15, Ratio 79, Rump Fat .21.
- This calving ease prospect also enjoys a Docility EPD in the top 1% and \$M value in the highest 5% of non-parent bulls.
- Recommended for heifers or cows.**

43 Pecks Design 9144

Born: 04/02/19	19910297	Tattoo: 9144	Bull
BA New Design 501	Sua New Design 435 RR 9654		
18346134 BA Lady Legend 356	BA RH Lauria 176		
	Sua Legend U8404 +		
	B A Liza 954		
	Connealy Consensus 7229 #*		
	Mra Lady 1004		
Ms Pecks Beauty 7119	Connealy Irish 0204 #*		
19720001 Ms Pecks Beauty 596	Ms Pecks Beauty 364		

CED	BW	WW	YW	SC	DOC	HP	CEM	Milk			
+12	-1.2	+47	+85	+89	+21	+14.1	+15	+21			
CW	Marb	RE	FAT	\$M	\$W	\$B	\$C				
+32	.35	+34	.32	+52	.32	+0.019	.28	+63	+48	+110	+206

- Individual Performance: BW 77 lbs, BWR 100, 205 Wt. 683 lbs, WWR 100, 365 Wt. 969 lbs, YWR 100.
- Dam's Production: BR 1@100, NR 1@100, YR 1@100. IMF 1@100, REA 1@100, Rib Fat 1@100, Rump Fat 1@100.
- Adjusted Ultrasound Scan Data: %IMF 2.86, Ratio 100, REA 11.4, Ratio 100, Rib Fat .19, Ratio 100, Rump Fat .20, Ratio 100.
- Born unassisted out of a first-calf heifer.
- He shares the #3 highest CED and posts the #3 lowest BW EPD in the sale offering.
- Recommended for heifers or cows.**

44 Pecks Discovery 9224

Born: 05/13/19	19873501	Tattoo: 9224	Bull
V A R Discovery 2240 #*	Connealy Onward #*	Sua New Design 435 RR 9654	
CCA Discovery D40	Sitz Henrietta Pride 81M	BA RH Lauria 176	
18851832 Jamesland 390 Truly 624J	Connealy Consensus 7229 #*	Sua Legend U8404 +	
	SF Miss 975 +*	B A Liza 954	
	WMR Timeless 458 #	Connealy Consensus 7229 #*	
	SF Barbara 033	Mra Lady 1004	
	CB Block Party 156 #*	Connealy Irish 0204 #*	
	Ms Pecks Bella 144	Ms Pecks Beauty 364	

CED	BW	WW	YW	SC	DOC	HP	CEM	Milk			
+7	+1.9	+59	+105	+2.61	+25	+11.9	+12	+26			
CW	Marb	RE	FAT	\$M	\$W	\$B	\$C				
+50	.38	+47	.34	+48	.34	+0.009	.31	+65	+61	+134	+239

- Individual Performance: BW 88 lbs, BWR 100, 205 Wt. 763 lbs, WWR 95, 365 Wt. 1041 lbs, YWR 97.
- Dam's Production: BR 2@97, NR 2@98, YR 2@97. IMF 2@101, REA 2@102, Rump Fat 2@81.
- Adjusted Ultrasound Scan Data: %IMF 2.24, REA 12.1, Ratio 110, Rib Fat .24, Rump Fat .21.
- His maternal brother was the \$4000 herd sire selection of Jerome Nelson, Lake Preston SD in 2020.
- He recorded the #3 heaviest adj 205-day wt in the sale offering.
- His sire, CCA Discovery D40 was the featured lot 2 bull of the 2018 Crooked Creek Angus sale where he recorded individual performance of WWR 112 and YWR 109, while his dam records a progeny ratio of NR 6@107.
- Recommended for larger heifers or cows.**

Peckenpaugh Angus Two Year Old Bulls



CCA Leverage D22
\$10,000 1/2 interest sire of lot 45



Lot 45

- Lot 45**
#1 WW EPD +71
- Lot 47 - CE**
#3 IMF Ratio 130
- Lot 48 - CE**
#4 BW EPD -1.1

45 Pecks Leverage 983

Born: 03/18/19 **19868011** **Tattoo: 983** **Bull**

V A R Discovery 2240 **
CCA Leverage D22
 18851811 Jamesland Miss Aberdeen 742J

Pecks CC&7 H421 250
Ms Blackcap Ann 6170
 19719191 Ms Pecks Blackcap Ann 020

A A R Ten X 7008 S A #*
 Deer Valley Rita 0308 +*
 TC Aberdeen 759 #
 Jamesland T684 Miss 642J
 Hoover CC&7 H421 *
 Ms Pecks 6BT2 Edella 930
 BT Right Time 24J #+
 Dahls Blackcap Ann 98



CED	BW	WW	YW	SC	DOC	HP	CEM	Milk
-1	+2.5	+71	+124	+93	+14	+11.1	+6	+28
CW	Marb	RE	FAT	\$M	\$W	\$B	\$C	
+43	.39	+.18 .35	+.65 .35	-.005 .32	+48	+71	+105	+184

- Individual Performance: BW 89 lbs, 205 Wt. 629 lbs, WWR 96, 365 Wt. 919 lbs, YWR 96.
- Dam's Production: NR 1@96, YR 1@96. IMF 1@103, Rump Fat 1@95.
- Adjusted Ultrasound Scan Data: %IMF 2.37, Ratio 103, REA 11.6, Rib Fat .15, Rump Fat .18, Ratio 95.
- His sire, CCA Leverage D22 was the \$10,000 1/2 interest top-selling bull of the 2018 Crooked Creek Angus Sale in MO where he recorded individual performance of BW 83 lbs, 205-day wt 825 lbs, WWR 116, 365-day wt 1422 lbs, WWR 114, IMF 5.74%, IMF ratio 132, UREA 14.8" and RE ratio 110.
- He posted the #1 WW EPD in the sale offering.

47 Pecks Upward 9113

Born: 03/28/19 **19868023** **Tattoo: 9113** **Bull**

Sitz Upward 307R #
Montana Upward 533 SF *
 18191275 SF Miss 3437 +*

Hoover Electrify M34
Ms Pecks Erica 6118
 19716702 Ms Pecks Erica 3134

Connealy Onward #*
 Sitz Henrietta Pride 81M
 Connealy Consensus 7229 #*
 SF Miss 975 +*
 Hoover Electrify
 Elbamere Queen Ellston J10
 Pecks EXT 932
 Fortunes RT Erica 754 #+



CED	BW	WW	YW	SC	DOC	HP	CEM	Milk
+10	-.6	+56	+106	+.84	+14	+14.7	+1	+29
CW	Marb	RE	FAT	\$M	\$W	\$B	\$C	
+46	.38	+.67 .34	+.30 .34	+.030 .31	+54	+64	+138	+233

- Individual Performance: BW 83 lbs, BWR 99, 205 Wt. 653 lbs, WWR 97, 365 Wt. 946 lbs, YWR 98.
- Dam's Production: BR 1@99, NR 1@97, YR 1@98. IMF 1@130, Rib Fat 1@89, Rump Fat 1@94.
- Adjusted Ultrasound Scan Data: %IMF 3.75, Ratio 130, REA 9.5, Rib Fat .17, Ratio 89, Rump Fat .17, Ratio 94.
- This calving ease and carcass trait prospect recorded the #3 highest IMF measurement in the sale offering.
- **Recommended for heifers or cows.**

48 Pecks Upward 965

Born: 03/10/19 **19868003** **Tattoo: 965** **Bull**

Sitz Upward 307R #
Montana Upward 533 SF *
 18191275 SF Miss 3437 +*

Hoover CC&7 H421 *
Ms Pecks Blackcap 654
 18977674 Ms Pecks Mentor Blackcap 132

Connealy Onward #*
 Sitz Henrietta Pride 81M
 Connealy Consensus 7229 #*
 SF Miss 975 +*
 SydGen C C & 7 #*
 Miss Blackcap Ellston F500 #
 Connealy Mentor 7374 #*
 Ms Pecks EXT Blackcap 816



CED	BW	WW	YW	SC	DOC	HP	CEM	Milk
+11	-1.1	+53	+92	+.83	+27	+7.4	+10	+19
CW	Marb	RE	FAT	\$M	\$W	\$B	\$C	
+35	.40	+.36 .36	+.59 .36	-.003 .34	+61	+53	+119	+215

- Individual Performance: BW 81 lbs, BWR 99, 205 Wt. 612 lbs, WWR 91, 365 Wt. 902 lbs, YWR 91.
- Dam's Production: BR 1@99.
- Adjusted Ultrasound Scan Data: %IMF 2.14, REA 10.5, Rib Fat .11, Ratio 58, Rump Fat .12, Ratio 60.
- He recorded the #4 lowest BW EPD in the sale offering ranking in the top 10% among non-parent bulls.
- **Recommended for heifers or cows.**



Peckenpaugh Angus Two Year Old Bulls



Ponca Creek Pepper
Sire of Lot 49

- Individual Performance: BW 82 lbs, BWR 98, 205 Wt. 658 lbs, WWR 98, 365 Wt. 932 lbs, YWR 94.
- Dam's Production: NR 2@105, YR 2@101. IMF 2@101, REA 2@105, Rump Fat 2@87.
- Adjusted Ultrasound Scan Data: %IMF 2.77, Ratio 100, REA 11.2, Ratio 102, Rib Fat .21, Rump Fat .18, Ratio 90.
- His maternal brother posted a WWR 111, YWR 108, IMF ratio 102, RE ratio 107 and was the \$3500 herd sire selection of Merle Litwillee, DeSmet SD.
- His sire, Ponca Creek Pepper, is a Cottonwood Angus herdsire featured on the ORlgen roster that is a performance and carcass trait standout backed by three generations of Pathfinder dams. He posts 9 traits in the top 25% of the Angus breed.



Lot 49

49 Pecks Pepper 976

Born: 03/15/19 *19868020 Tattoo: 976 Bull

A A R Ten X 7008 S A #
Ponca Creek Pepper*
17417464 Ponca Creek Blackbird 955 #

Hoover Electrify M34
Ms Pecks Blackcap 557
18679812 Ms Pecks EXT Rightway 010

Mytty In Focus #*
A A R Lady Kelton 5551 #
Connealy All Around #*
Ponca Creek Blackbird 675 #
Hoover Electrify
Elbamere Queen Ellston J10
Hylene Right Way 781 #
Fortunes 6015 of EXT 110 +



CED	BW	WW	YW	SC	DOC	HP	CEM	Milk
+3	-.1	+57	+102	+57	+21	+11.3	+10	+22

CW	Marb	RE	FAT	\$M	\$W	\$B	\$C
+42	.42	+.61 .38	+.58 .38	+.013 .35	+52	+56	+135 +227

50 Pecks H421 939

Born: 02/21/19 *19868022 Tattoo: 939 Bull

SydGen C C & 7 #*
Hoover CC&7 H421*
16635147 Miss Blackcap Ellston F500 #

CAV Brilliance 618-2618
Ms Pecks Lady 485
19096486 Ms Pecks Lady 170

S A F Connection #+
SydGen Forever Lady 4087
Woodhill Statesman 54K-90N #
Miss Blackcap Ellston B50
S A V Brilliance 8077 #*
Gannon Lassie F618
LaGrand Marathon 8166 +
Ms Pecks Regulator Stats7240 #



CED	BW	WW	YW	SC	DOC	HP	CEM	Milk
+11	+.9	+29	+43	+.27	+19	+12.7	+17	+24

CW	Marb	RE	FAT	\$M	\$W	\$B	\$C
-13	.38	+.11 .33	+.11 .33	+.021 .29	+66	+34	+41 +119



Hoover CC&7 H421
Sire of Lot 50

- Individual Performance: BW 83 lbs, BWR 98, 205 Wt. 590 lbs, WWR 88, 365 Wt. 883 lbs, YWR 89.
- Dam's Production: BR 2@97. IMF 1@162, REA 1@106, Rump Fat 1@75.
- Actual Ultrasound Scan Data: %IMF 2.96, REA 11.8, Rib Fat .24, Rump Fat .35.
- His maternal brother was chosen by Lyle and Casey Vander Vorste, Polluck SD from the 2019 auction.
- His sire, Hoover CC&7 H421 was selected by Peckenpaugh Angus as the featured fall bull in the 2011 Hoover Angus Sale where he posted enviable individual performance of BW 73 lbs, 205-day wt 838 lbs, WWR 122, 365-day wt 1337 lbs, and YWR 110. Multiple years of progeny records have proven H421 to be a noteworthy calving ease sire with a BWR 123@99.
- **Recommended for heifers or cows.**



Lot 50

Peckenpaugh Angus Two Year Old Bulls



**Lot 51
WWR 105**



51 Pecks New Design 9141

Born: 04/01/19 **19868017** **Tattoo: 9141** **Bull**

BA New Design 316
BA New Design 501
18346134 BA Lady Legend 356

Hoover Electrify M34
Ms Pecks Lass 7170
19614794 Ms Pecks Lass 1106

Sua New Design 435 RR 9654
BA RH Lauria 176
Sua Legend U8404 +
B A Liza 954
Hoover Electrify
Elbamere Queen Ellston J10
Pecks Bando 801
KMD Lass 70



CED	BW	WW	YW	SC	DOC	HP	CEM	Milk							
+1	+2.5	+53	+90	+2.00	+29	+8.8	+10	+20							
CW		Marb		RE		FAT		\$M		\$W		\$B		\$C	
+39	.36	+36	.32	+27	.33	+0.05	.30	+52	+47	+115	+201				

- Individual Performance: BW 90 lbs, 205 Wt. 708 lbs, WWR 105, 365 Wt. 1012 lbs, YWR 102.
- Dam's Production: NR 1@105, YR 1@102. IMF 1@102, REA 1@100, Rump Fat 1@100.
- Adjusted Ultrasound Scan Data: %IMF 2.83, Ratio 102, REA 11.0, Ratio 100, Rib Fat .25, Rump Fat .20, Ratio 100.
- Born unassisted out of a first-calf heifer.
- His sire, BA New Design 501 was selected by Tony Peckenpaugh as the \$10,000 feature of the 2016 Born's Angus Sale in South Dakota where he recorded a modest BW 64 lbs, act WW 984 lbs and adj 365-day wt 1344 lbs with 4.08% IMF and an act 16.8 UREA.


52 Pecks Leverage 9133

Born: 3/30/19 **19910298** **Tattoo: 9133** **Bull**

V A R Discovery 2240 #*
CCA Leverage D22
18851811 Jamesland Miss Aberdeen 742J

Montana Timeless 426 SF *
Ms Pecks Blackcap Ann 674
19340020 Ms Pecks Blackcap Ann 392

A A R Ten X 7008 S A #*
Deer Valley Rita 0308 +*
TC Aberdeen 759 #
Jamesland T684 Miss 642J
WMR Timeless 458 #
SF Barbara 033
Hoover CC&7 H421 *
Ms Pecks Blackcap Ann 019



CED	BW	WW	YW	SC	DOC	HP	CEM	Milk							
+8	+6	+47	+89	+6.4	+16	+6.2	+11	+29							
CW		Marb		RE		FAT		\$M		\$W		\$B		\$C	
+29	.37	+21	.34	+97	.34	+0.05	.31	+40	+53	+108	+180				

- Individual Performance: BW 86 lbs, 205 Wt. 678 lbs, WWR 101, 365 Wt. 926 lbs. YWR 96.
- Dam's Production: NR 1@101, YR 1@96.
- Adjusted Ultrasound Scan Data: %IMF 1.78, REA 10.6, Rib Fat .13, Ratio 68, Rump Fat .11, Ratio 61.
- His sire, CCA Leverage D22 was the \$10,000 1/2 interest top-selling bull of the 2018 Crooked Creek Angus Sale in MO where he recorded individual performance of BW 83 lbs, 205-day wt 825 lbs, WWR 116, 365-day wt 1422 lbs, WWR 114, IMF 5.74%, IMF ratio 132, UREA 14.8" and RE ratio 110.
- **Recommended for heifers or cows.**

53 Pecks Perfect Balance 9130

Born: 03/30/19 **Commercial** **Tattoo: 9130** **Bull**

V A R Discovery 2240 #*
44 Perfect Balance 5834 +*
18353122 Rita 0245 of Rita 7068 5M2 +

Montana Timeless 426 SF *
Commercial Cow 742
Ms Pecks Pride 372

A A R Ten X 7008 S A #*
Deer Valley Rita 0308 +*
Rito Revenue 5M2 of 2536 Pre #+*
Rita 7068 of Rita 5FH8 Obj +
WMR Timeless 458 #
SF Barbara 033
Hoover CC&7 H421 *
Ms Pecks Pride 012

Sire's EPDs															
CED	BW	WW	YW	SC	DOC	HP	CEM	Milk	CW	MB	RE	FAT	\$W	\$B	\$C
+13	+5	+67	+136	+7.3	+24	+10.4	+9	+36	+61	+1.26	+6.5	+0.33	+79	+193	+307

- Individual Performance: BW 82 lbs, 205 Wt. 688 lbs, 365 Wt. 1170 lbs.
- The first progeny, of the \$13,000 44 Perfect Balance 5834 have verified his curve bending attributes with a progeny portfolio of BWR 22@99, WWR 22@101, VWR 22@101, IMF 18@115, RE 18@100 and Rib Fat 18@97.

54 Pecks Upward 9235

Born: 05/27/19 **Commercial** **Tattoo: 9235** **Bull**

Sitz Upward 307R #
Montana Upward 533 SF *
18191275 SF Miss 3437 +*

Leachman Sunrise A144Z +*
Commercial Cow
Commercial Cow

Connealy Onward #*
Sitz Henrietta Pride 81M
Connealy Consensus 7229 #*
SF Miss 975 +*
MCC Daybreak #
Tehama Elite Blackbird K620
Sik Elbance 23036

Sire's EPDs															
CED	BW	WW	YW	SC	DOC	HP	CEM	Milk	CW	MB	RE	Fat	\$W	\$B	\$C
+6	-1.0	+59	+101	+3.2	+16	+12.4	+5	+27	+46	+6.0	+7.8	+0.10	+72	+144	+261

- Individual Performance: BW 79 lbs, 205 Wt. 605 lbs, 365 Wt. 1090 lbs.
- His sire was Tony Peckenpaugh's \$13,000 2/3 interest choice from the 2016 Montana Ranch Bull Sale where he reported individual performance of BW 74 lbs, BWR 99, WW 765 lbs, WWR 116, YW 1171 lbs, YWR 104, IMF 5.38%, IMF ratio 126, RE 14.1" and RE ratio 103. Today, sons of Montana Upward enjoy excellent carcass attributes verified by progeny ratios of IMF 16@107, RE 16@101, Rib Fat 16@91 and Rump Fat 16@96.

THINK YOU HAVE TO SACRIFICE YOUR **COW HERD**

FOR THE SAKE OF
MARBLING?



CABcattle.com

Think again.

Watch & bid online for **FREE** at **conoveronlinesales.com**

powered by DVAuction



It's NEW...

It's EXCITING...

It's CONOVERONLINESALES.COM

Buying online is as easy as 1, 2, 3...

1. Create a new DVAuction account at www.conoveronlinesales.com
2. Apply for bidding approval by clicking on the "details" tab at least 24 hours prior to the auction-a DV representative will notify you once you have been approved
3. Tune in for the sale and make your purchases!

High speed internet is required for successful bidding-be sure to check the lag-time monitor in the top left corner to ensure real-time broadcasts.

Proxy Bidding-if you can't make time to watch the sale, register a proxy bid and let our system represent your bid while you're away. Look for the "proxy bid" tab on the auction listing, and fill in your maximum bids. We'll handle the rest!

Having troubles? During the auction, you can type a message to the operator at any time for assistance. Our full-time support team can also always be reached at (402) 474-5557.

DVAuction
Broadcasting Real-Time Auctions

BULL WINTERING PROGRAM

Peckenpaugh Angus will offer **FREE** bull wintering until April 1, 2021. Buyer will be required to purchase a minimum of 90 days mortality insurance at a rate of 3.6% of the purchase price. Additional wintering fees of \$3.00 per day will be assessed after April 1st.

If you choose to take your bull home sale day, you will receive \$50 off your purchase price.

GUARANTEE

All bulls selling for \$3,000 or more are guaranteed against breeding injury for the first breeding season. Breeding season is defined as the 90-day period following the first turnout of the bulls.

If a replacement bull is available, he will be provided. Or, if the buyer prefers, credit toward one bull will be given in the following year's sale, less salvage value of the injured bull. Please notify us as soon as possible should injury occur and prior to the injured bull being sold for salvage.

QUALITY PAYS. *A lot.*

Packers pay over \$75 million annually in CAB grid premiums.

Are you getting your share?



CABcattle.com



Peckenpaugh Angus Four Years Harvest Data

Peckenpaugh's sent 296 steers to Cargill at Schuyler Nebraska the fall of 2017

137 of steers made the Certified Angus Beef program 46.3%
102 steers went Prime 34.5%
189 steers went Choice 63.9%
5 steers went Select 1.6%

Peckenpaugh's sent 252 steers to Cargill at Schuyler Nebraska the fall of 2018

107 of steers made the Certified Angus Beef program 42.5%
101 steers went Prime 40%
189 steers went Choice 59.6%
1 steer went Select 0.4%

- Steers were all born and fed here.
- Steers did not receive any implants.
- Mostly sired Peckenpaugh Angus bulls.
- Steers were all black or baldies.

Peckenpaugh's sent 171 steers to Cargill at Schuyler Nebraska January 2020

171 head shipped January 2020
82 head qualified for Certified Angus Beef
CAB qualification rate 48%
(includes several ineligible red hided)
35 Prime steers 20.5%
128 Choice steers 75%
8 Selects 4.5%
Ave REA 13.0"

Peckenpaugh's sent 162 cattle to Cargill in Schuyler January 2021

84 head heifers

35 head went Certified Angus Beef 41.6%
(Includes ineligible red hided cattle)
29 head went Prime 34.5%
53 head went Choice 63.1%
2 head went Select .2%

78 head steers

19 head went Certified Angus Beef 24.4%
(includes ineligible red hided cattle)
45 head went Prime 57.7%
33 head went Choice 42.3%

- No implants
- Home raised, mostly sired by Peckenpaugh Angus Bulls
- 157 head were killed after the 2 sets above but data was not received in time for the catalog deadline.
- Info will be added sale day



*"The national average of cattle that make CAB qualification is less than 1 in 4 Angus influenced cattle harvested at licensed plants and meet all 10 carcass specifications."
Stated by Certified Angus Beef LLC,*

Notes

Lot #	Tatt	HD/LD Type	CED%	BW %	WW %	YW %	DMI %	YH %	SC %	DOC %	HP%	CEM %	MILK %	MW %	MH %	CW %	MARB %	RE %	FAT %	TEND %
1	9139	HD50K	17	19	43	67	35	7	22	71	73	5	8	69	18	49	63	82	82	17
2	9146	HD50K	10	36	46	66	23	64	68	2	78	52	29	59	73	34	41	51	60	69
3	9110	HD50K	100	94	86	96	2	87	48	32	85	30	95	87	90	99	70	75	5	91
4	9154	HD50K	31	36	55	62	64	14	56	3	50	71	19	49	17	17	83	61	42	84
5	984	HD50K	43	24	24	51	62	18	97	32	30	43	66	37	29	45	19	79	100	30
6	9172	HD50K	71	75	59	65	31	47	82	9	66	72	62	65	59	25	70	72	74	27
7	9136	HD50K	82	48	85	89	15	57	62	35	68	87	67	85	63	71	47	87	71	46
8	9207	HD50K	10	8	54	54	64	46	65	18	62	46	76	36	50	37	19	36	43	40
9	9168	HD50K	32	37	62	88	35	78	18	11	91	100	25	97	96	62	39	76	82	34
10	9199	HD50K	28	42	97	100	3	86	73	23	43	15	60	100	98	98	70	80	56	21
11	9135	HD50K	11	6	89	53	7	62	7	64	11	38	28	58	33	38	81	39	28	58
12	9117	HD50K	94	82	34	19	55	41	2	2	13	76	78	12	19	13	71	20	29	73
13	994	HD50K	28	28	80	99	14	83	97	8	86	13	46	96	90	86	95	55	60	82
14	977	HD50K	79	85	19	39	74	7	34	4	61	65	70	33	12	37	100	38	56	72
15	978	HD50K	79	75	52	41	21	19	13	42	86	55	2	52	26	14	80	68	25	34
16	912	HD50K	40	40	31	25	72	48	6	3	36	8	77	25	39	43	75	41	71	29
17	9109	HD50K	35	26	69	85	13	53	75	42	3	74	44	79	73	72	50	83	77	2
18	950	HD50K	15	1	90	93	25	51	77	79	60	53	67	77	78	88	78	95	67	11
19	9158	HD50K	44	33	86	80	8	73	67	46	27	68	26	75	84	83	21	98	83	8
20	9148	HD50K	17	6	84	66	35	84	72	26	17	75	80	88	76	85	18	47	43	84
21	938	HD50K	83	54	49	24	67	10	53	23	25	75	8	30	22	20	90	55	39	24
22	987	HD50K	15	12	80	94	39	22	70	64	43	43	12	82	81	56	47	64	71	50
23	916	HD50K	19	32	82	95	17	51	43	6	76	4	34	81	72	81	95	88	100	13
24	919	HD50K	11	6	45	22	94	21	40	1	46	96	53	24	10	26	18	21	43	47
25	952	HD50K	47	35	48	24	91	27	92	29	74	58	20	58	43	47	29	88	67	46
26	9160	HD50K	23	48	45	11	95	61	40	5	76	72	84	40	32	34	4	78	96	97
27	991	NA	NA	NA	NA	NA	NA	NA	NA	NA	NA	NA	NA	NA	NA	NA	NA	NA	NA	NA
28	922	HD50K	65	54	55	57	34	11	95	46	72	84	46	42	19	23	60	69	60	48
29	931	HD50K	7	12	98	100	3	92	96	38	78	27	55	99	90	100	62	95	96	17
30	907	HD50K	79	67	90	99	7	33	82	15	30	19	59	96	79	83	64	70	18	42
31	955	HD50K	43	13	39	10	84	38	57	37	78	88	17	32	26	12	49	51	54	24
32	956	HD50K	34	8	88	82	29	71	81	2	71	51	65	66	34	86	54	76	63	71
33	921	HD50K	1	3	83	59	59	100	92	68	64	73	97	89	99	93	22	64	57	77
34	953	HD50K	13	9	55	40	67	34	73	3	79	83	48	47	22	43	47	98	98	24
35	943	HD50K	31	47	80	80	37	19	50	57	33	17	37	67	37	83	7	90	96	58
36	923	HD50K	94	81	67	78	13	70	81	86	33	83	15	70	75	64	67	94	74	61
37	936	HD50K	77	74	41	63	38	4	30	8	62	77	3	46	17	25	39	57	54	26
38	966	HD50K	63	38	68	84	7	28	##	78	96	65	43	33	27	63	86	94	55	3
39	925	HD50K	95	96	42	67	29	26	31	68	74	70	75	45	23	36	81	73	61	71
40	917	HD50K	26	9	70	93	21	28	56	23	50	86	46	93	77	39	67	55	83	27
41	906	HD50K	39	42	57	65	40	62	67	18	79	38	63	51	65	45	43	94	85	29
42	989	HD50K	26	15	79	83	23	89	85	1	19	45	47	87	89	53	61	71	70	81
43	9144	HD50K	8	6	67	73	26	75	53	39	7	2	82	47	72	62	83	48	44	7
44	9224	HD50K	72	79	29	37	63	11	1	23	31	51	37	37	17	18	65	66	57	5
45	983	HD50K	94	87	15	12	89	32	31	65	38	61	39	14	15	25	98	17	23	31
47	9113	HD50K	28	19	64	36	62	71	59	66	21	100	61	49	56	54	38	84	75	8
48	965	HD50K	6	6	73	72	28	66	48	11	94	45	84	66	78	67	76	44	37	22
49	976	HD50K	62	15	61	55	25	75	84	25	50	34	69	40	66	69	53	36	45	39
50	939	HD50K	39	51	94	99	2	63	66	43	30	1	46	95	91	99	91	92	73	6
51	9141	HD50K	94	77	61	84	12	86	6	4	73	15	84	72	88	67	94	67	12	18
52	9133	HD50K	66	61	82	67	48	27	52	72	96	43	18	74	57	72	88	6	52	80
53	9130	Commercial																		
54	9235	Commercial																		

Peckempaugh ANGUS

