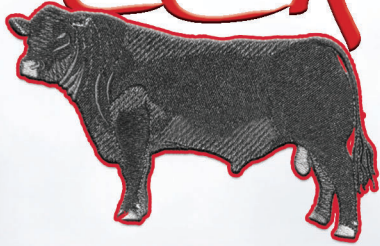


Reckenpaugh



ANGUS

Annual 2 Year Old

Friday

FEB. 28 2020
1:30 PM

At The Ranch - Carthage, SD

**B
U
L
L
S
A
L
E**



LOT 56



LOT 37

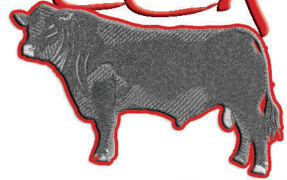


LOT 5



All animals in this sale
have been 50K tested

Peckenpaugh ANGUS



Selling
57 Virgin Two Year Old Bulls
90 Straws Semen

AGI **ALL BULLS 50K TESTED**
GE-EPD

Annual 2 Year Old **BULLSALE**

Friday
FEB. 28 2020
1:30 PM
 At The Ranch - Carthage, SD

SALE DAY PHONES:

TONY PECKENPAUGH (605) 860-0130
BOB PECKENPAUGH (605) 860-1503
(605) 860-8406

CONOVER AUCTION SERVICE CELL PHONES:
515-491-8078 • 515-491-1335

AMERICAN ANGUS ASSOCIATION

Rod Geppert.....605-295-3673

ANGUS BOARD OF DIRECTORS

Mick Varilek.....605-337-2261

LIVESTOCK PRESS REPRESENTATIVES

Cattle Business Weekly.....Jim Scheel (605) 545-1521

Special Assignment.....Chris Effling (605) 769-0142

Tri State Neighbor.....Jeff Kapperman (605) 940-5104



Auctioneer:
Al Conover
(515) 491-8078

This sale will be broadcast live on the internet.



Real time bidding & proxy bidding available.

See Details on Page 16

VIEW BULL VIDEOS ONLINE
AT WWW.DVAUCTION.COM

GENERAL INFORMATION

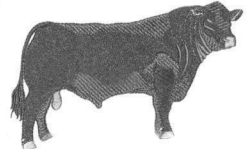
SALE LOCATION: At the farm, 21722 428th Ave, Carthage, SD 57323
 Directions to the Farm:
 From Carthage: Go east on 222nd St 3 miles to 428th Ave. Turn north and go 4.5 miles. East side of the road.
 From Manchester: From Hwy 14 go south on 425th Ave to 215th St. Turn east and go 3 miles to 428th Ave and go south 2.5 miles.
 From DeSmet: Go south on Hwy 25 8 miles to 215th St. Go 5 miles west to 428th Ave and turn south and go 2.5 miles.
MOTEL ACCOMMODATIONS:
 Kelly Inn, Mitchell, SD. Phone: 605-995-0500.
 Days Inn, Mitchell, SD. Phone: 605-996-6208.
 Comfort Inn, Mitchell, SD. Phone: 605-996-1333.
 De Smet Super Deluxe Inn & Suites, De Smet, SD Phone: 605-854-9388
 Best Western, Huron, SD. Phone: 605-352-2000
INSPECTION OF CATTLE:
 Cattle are available for inspection and viewing anytime prior to the sale. Please call to make arrangements.
HEALTH:
 Interstate health papers furnished on all cattle selling. All bulls semen tested prior to the sale and are guaranteed breeders.
EPDS & \$VALUES:
 The American Angus Association is now calculating EPDs on a weekly basis using all available carcass harvest data, ultrasound data and the Igenity Angus specific genomic profile data. It is possible new data has been submitted between the date the catalog was finalized and sale day, which will affect the individual EPDS and \$Values indexes of the animals selling. If your purchasing decision relies highly on the most current data available, please look up animals of interest on the American Angus Association web page prior to viewing the sale offering.
TERMS: Cash - please settle for cattle promptly.
TERMS & CONDITIONS:
 All cattle sell according to the standard terms and conditions of the American Angus Association.
TRUCKING: We will be glad to assist in making the best possible trucking arrangements.
INSURANCE:
 Will be available sale day through Conover Auction Service, an American Livestock Agent.
LIABILITY:
 All persons attending this sale do so at their own risk, legal or otherwise for their safety or the behavior of the animals. The Owners, Auction Service and Sale Staff assume no liability for property loss or any accidents that may occur.
ANNOUNCEMENTS:
 From the block will take precedence over the catalog. Buyers unable to attend may send their bids to the Auction Service, Field Representatives or Auctioneer.
LUNCH: Complimentary lunch will be served at 12:00 NOON

Retaining a 1/3 semen revenue sharing interest in each bull in the sale. Buyer maintains 100% possession and salvage value.

SEE BULL WINTERING & GUARANTEE INFO ON PAGES 11 & 24

Bull Guarantee Details on Pages 9 & 24

PECKENPAUGH ANGUS



CARTHAGE, SD

21722 428th Ave - Carthage, SD 57323

TONY PECKENPAUGH
 (605) 860-0130 (cell)

BOB PECKENPAUGH
 (605) 772-5398 (home) - (605) 860-1503 (cell)

peckenpaughangus@gmail.com
 www.peckenpaughangus.com

Sale Managed By:
Conover
Auction Service
 P.O. Box 9 - Baxter, IA 50028
AL & JEANNE CONOVER
 641-227-3537 - 641-227-3792 (FAX)
DAVE SWEENEY - 641-373-4340
 www.conoverauction.com
 conover@conoverauction.com

PECKENPAUGH ANGUS



21722 428th Ave

CARTHAGE, SD

Another year has come and it's bull sale season. We would like to thank you for taking time and showing interest in our program! This last year has had lots of challenges with weather and markets. Our hats off to all the livestock producers that fought the challenges of the last year and pray for better times ahead! Black Angus cattle still have large demand and give the rancher a premium come sale day for quality!

On Feb. 28th we offer a very uniform groups of bulls. They have been Genomic tested also. They have had all their vaccinations, we follow Zoetis vaccination program mainly. Bulls will be semen tested before the sale and given first round Anthrax and Foot rot at that time. Bulls have tested negative for BVD and Johnes. Bulls run out on pasture and are able to move around like bulls should. The docility is very good in this group of bulls.

Bulls are able to be viewed anytime. Have any questions feel free to contact us and we will assist you the quickest and best we can. Bulls will have videos on DV Auction for viewing. We enjoy meeting new customers and visiting with past customers and look forward to sale day! We appreciate your time and look forward to seeing you Feb. 28th. Thank you!

Sincerely,
Peckenpaugh Angus

Tony Peckenpaugh
(605) 860-0130 (cell)

Bob Peckenpaugh
(605) 772-5398 (home) - (605) 860-1503 (cell)
peckenpaughangus@gmail.com
peckenpaughangus.com

Sale Managed By:



P.O. Box 9 - Baxter, IA 50028

AL & JEANNE CONOVER

641-227-3537 • Fax: 641-227-3792

DAVE SWEENEY 641-373-4340

Email: conover@conoverauction.com

www.conoverauction.com

Dear Angus Friends

It is once again a pleasure to assist the Peckenpaugh's with their eighth offering of high-quality Angus bulls. These outstanding herd bull prospects excel at the traits that have made the Angus breed famous; they are easy calving, growthy, efficient, and well positioned to benefit from the grid pricing premiums.

In today's cattle industry, it is not enough to just be black hided. The difference between profit and significant loss in this business can be found in the genetic material. The EPDs and performance information included in this catalog can

be used to make comparisons and develop a road map to your economic success.

These bulls are coming two-year-olds that have been properly developed in the same range conditions where they will be asked to service cows while maintaining their athleticism and virility. Studying this catalog should reveal a re-occurring theme. The Peckenpaugh program is built on production traits that favor low-input operations. EPDs will reveal optimum milk and calving ease attributes with high Docility and Heifer Pregnancy values.

We were gratified to see so many repeat customers in 2019 and know that the Peckenpaugh family prides themselves on servicing their clients. As always, we look forward to seeing you on February 28th at the Peckenpaugh sale facility, Carthage, SD. If you have any questions, don't hesitate to call our office or the Peckenpaugh's directly.

*Al and Jeanne Conover
Dave Sweeney*



Al Conover



Jeanne Conover



Dave Sweeney

Peckenpaugh Angus Herd Sires



Montana Timeless 426 SF
Reference Sire A

A Montana Timeless 426 SF

Born: 12/08/13 *17882038 **Tattoo: 426** **Bull**
 Leachman Right Time 338-5605 #+
WMR Timeless 458 #
16226527 WMR Blackcap 521
 S A V Final Answer 0035 #*
SF Barbara 033
16696476 SF Barbara 819 #+
 Hyline Right Time 338 #
 Leachman Erica 1201 +
 W M R Dateline 210
 W M R Blackcap 043
 Sitz Traveler 8180 #
 S A V Emulous 8145
 Woodhill Foresight #+
 H P C A 1407 New Design 365 +



CED	BW	WW	YW	SC	DOC	HP	CEM	Milk			
+10	+1.2	+58	+92	+45	+34	+9.5	+14	+29			
CW	Marb	RE	FAT	\$M	\$W	\$B	\$C				
+40	.47	+.20	.43	+.71	.43	+.025	.43	+.71	+.70	+111	+215

- Selected by Peckenpaugh Angus as the \$18,500 feature of the 2015 Montana Angus Ranch Sale where he posted a WWR 108 and YWR 106 with a RE ratio 109, Rib Fat ratio 70 and Rump Fat ratio 58.
- His sire, WMR Timeless 458 is an Accelerated Genetics feature that is a growth, muscle and power sire. He topped the Wheeler Mountain Angus Bull Sale at \$32,000 2/3 interest.
- His Final Answer dam records NR 4@104 and YR 4@102 and his grandam earned Pathfinder status.

B Jindra Double Vision J 342

Born: 01/20/15 18380903 **Tattoo: 255** **Bull**
 Connealy Reflection #
Jindra Double Vision #*
16748826 Hoff Rachel 8312 405 +
 Connealy Guinness #*
Jindra Rosella J 151 342
18327345 Jindra Rosella J 825 151
 Bon View New Design 878 #
 Happy Grill of Conanga 6260
 Hoff Limited Edition S C 594 #
 Hoff Miss Expo S C 4223
 Connealy Dublin 8223 #
 Panda of Conanga 3609
 Hoff Uncharted 271 144
 Jindra Exquisite J 405 825 #+



CED	BW	WW	YW	SC	DOC	HP	CEM	Milk			
+4	+9	+62	+115	+70	+23	+13.2	+7	+34			
CW	Marb	RE	FAT	\$M	\$W	\$B	\$C				
+56	.33	+.67	.28	+.30	.31	+.038	.29	+.48	+.71	+161	+257

- Selected by Peckenpaugh Angus from the 2016 Jindra Angus Bull Sale where he posted a BW 72 lbs, BWR 94, WW 813 lbs, WWR 106, YW 1472 lbs, and YWR 106.
- His dam has a phenomenal progeny record of BR 5@96, NR 5@111, YR 3@108, IMF 4@109



Jindra Double Vision
Sire of Reference Sire B

Peckenpaugh Angus Herd Sires

C 44 Trending 4413

Born: 09/23/14 *17903712 Tattoo: 4413 Bull

A A R Ten X 7008 S A#*
V A R Discovery 2240 *
 17262835 Deer Valley Rita 0308 +*

44 Conveyance 0X52 +*
44 Ruby 2477 +*
 17344681 B/R Ruby 1224

Mytty In Focus #*
 A A R Lady Kelton 5551 #
 Sitz Upward 307R #
 G A R Objective 2345 *
 Werner War Party 2417 #+*
 B/R Blackcap Empress 127
 B/R New Design 323 #
 H F Ruby 036-951 +



CED	BW	WW	YW	SC	DOC	HP	CEM	Milk			
+3	+2.6	+69	+130	+1.42	+24	+9.8	+4	+21			
CW	Marb	RE	FAT	\$M	\$W	\$B	\$C				
+55	.50	+.66	.35	+.65	.45	-.002	.45	+50	+60	+175	NA

- "4413" gained national attention as the \$195,000 top-selling bull of the 2016 44 Farms Spring Bull Sale.
- He stems from a first-calf heifer that is sound and deep with a tremendous udder. He is a powerfully constructed bull that is heavily muscled.
- Currently he blends enviable growth EPDs with a +1.19 Marb EPD and negative Fat EPD to earn a \$B value in the top 10%.



44 Trending 4413
Reference sire C

D Montana Upward 533 SF

Born: 12/31/14 18191275 Tattoo: 533 Bull

Connealy Onward #*
Sitz Upward 307R #
 14963730 Sitz Henrietta Pride 81M

Connealy Consensus 7229 #*
SF Miss 3437 +*
 18009124 SF Miss 975 +*

Connealy Lead On #
 Altune of Conanga 6104
 Sitz Value 7097 #
 Sitz Henrietta Pride 1370
 Connealy Consensus #*
 Blue Lilly of Conanga 16
 TC Total 410#
 SF AF Wyffels Miss 5407 +



CED	BW	WW	YW	SC	DOC	HP	CEM	Milk			
+8	-1.4	+59	+100	+.33	+17	+13.5	+5	+27			
CW	Marb	RE	FAT	\$M	\$W	\$B	\$C				
+49	.47	+.59	.43	+.75	.43	+.012	.42	+78	+74	+152	+275

- Tony Peckenpaugh's \$13,000 2/3 interest choice from the 2016 Montana Ranch Bull Sale where he reported individual performance of BW 74 lbs, BWR 99, WW 765 lbs, WWR 116, YW 1171 lbs, YWR 104, IMF 5.38%, IMF ratio 126, RE 14.1" and RE ratio 103.
- 533 was born unassisted from a first-calf heifer by "Consensus 7229" that was bred in the highly respected Sundberg Farms program in IL.
- Sons of Montana Upward enjoy excellent carcass attributes verified by progeny ratios of IMF 13@109, RE 13@102, Rib Fat 13@95 and Rump Fat 13@98.
- He enjoys a balanced EPD profile that ranks him in the breed's elite top 25% for 10 EPD traits and \$value indexes.



Montana Upward 533 SF
Reference sire D

E Hoover Electrify M34

Born: 01/13/13 17603593 Tattoo: M34 Bull

Basin Excitement #*
Hoover Electrify
 16990022 Blkcp Empress Ellston D241

SydGen C C & 7 #*
Elbamere Queen Ellston J10
 16697589 Elbamere Queen S36 #

Basin Expedition R156 +
 Basin Lady S532 AK
 Woodhill Fusion 177-70L
 Blackcap Empress Ellston A28
 S A F Connection #+
 SydGen Forever Lady 4087
 Steele Hi Flyer C12
 Elbamere Queen P22



CED	BW	WW	YW	SC	DOC	HP	CEM	Milk			
+2	+1.4	+51	+100	+1.43	+32	+14.1	+4	+22			
CW	Marb	RE	FAT	\$M	\$W	\$B	\$C				
+41	.45	+.13	.40	+.76	.41	-.016	.40	+46	+45	+148	+238

- This outstanding young herd sire addition gained national attention as the \$24,000 third top-selling bull of the 2014 Hoover Angus sale where he was the 2nd top 205-day wt in his contemporary group of 150 bulls posting a WWR 117.
- His sire Hoover Electrify was one of the top selling bulls of the 2012 Hoover sale and serves in the ADD Angus herd in Iowa where his BW EPD continues to drop, and his WW EPD goes up with each succeeding calf crop.
- His three calf crops have revealed his carcass trait attributes verified by progeny ratios IMF 46@101, RE 46@102, Rib Fat 46@93 and Rump Fat 46@81.



Hoover Electrify M34
Reference sire E

Introducing Our Newest Herd Sire Aquisitions



SydGen Enhance 8435

Reference Sire F



SydGen Miss Wix 8850

Pathfinder grandam of reference sire F

F SydGen Enhance 8435

Born: 09/04/18	19459869	Tattoo: 8435	Bull
SydGen Exceed 3223 *	SydGen Googol +*		
SydGen Enhance 18170041	SydGen Forever Lady 1255 +*		
SydGen Rita 2618	SydGen Liberty GA 8627 #*		
	Fox Run Rita 9308 #		
SydGen FATE 2800 +*	SydGen Trust 6228 #*		
SydGen Miss Wix 6627 +	SydGen Heroine 9808 +		
18644424	Spur Success 2801		
	SydGen Miss Wix 5741 +		



CED	BW	WW	YW	SC	DOC	HP	CEM	Milk	
+14	-.9	+70	+127	+1.60	+22	+10.1	+14	+29	
CW	Marb	RE	FAT	\$M	\$W	\$B	\$C		
+63	.38	+.35	.34	+.90	.32	+66	+81	+167	NA

- Co-owned with Sydenstricker Angus, Mexico MO.
- Selected by Peckenpaugh Angus as the \$20,000 ½ interest feature of the 2019 Sydenstricker Sale where he recorded the #1 adj 365-day wt and the #1 adj ribeye area in his contemporary group.
- His dam is a fourth-generation embryo transplant descending from the Pathfinder grandam, SydGen Miss Wix 8850 that posted a NR 7@108 when she sold for \$11,000 to Bernard Taylor, MO.
- He carries strong calving ease credentials to compliment an EPD profile that ranks him in the top 10% or better for CED, BW, WW, YW, RADG, SC, Claw, CEM, CW, RE, \$W, \$F, \$B and \$C.

G SydGen Enhance GA 8430

Born: 09/02/18	*19459867	Tattoo: 8430	Bull
SydGen Exceed 3223 *	SydGen Googol +*		
SydGen Enhance 18170041	SydGen Forever Lady 1255 +*		
SydGen Rita 2618	SydGen Liberty GA 8627 #*		
	Fox Run Rita 9308 #		
SydGen FATE 2800 +*	SydGen Trust 6228 #*		
SydGen Mary Blackbird 6821 +*	SydGen Heroine 9808 +		
18794094	A A R Ten X 7008 S A #*		
	Tehama Mary Blackbird B244 *		
	Tehama Mary Blackbird Z723 #+		



CED	BW	WW	YW	SC	DOC	HP	CEM	Milk			
+8	+2.1	+70	+142	+2.02	+32	+10.2	+10	+26			
CW	Marb	RE	FAT	\$M	\$W	\$B	\$C				
+73	.38	+.66	.35	+1.10	.32	+.012	.32	+57	+67	+207	NA

- Co-owned with Sydenstricker Angus, Mexico MO.
- Selected by Peckenpaugh Angus as the \$17,000 ½ interest feature of the 2019 Sydenstricker Sale where he recorded was the 3rd highest ADG bull in his feeding group.
- His dam joined a joint ET program of SydGen and Greiner Angus after her \$13,000 debut in the 2017 SydGen Sale, and his grandam, a \$17,000 Silverado Farms donor dam that produced embryos at \$2300 each in the 2016 Annual SydGen event.
- He boasts RADG, DOC, CW, \$F and \$B values in the top 1% with YW, SC and RE EPDs in the top 2%.



SydGen Enhance GA 8430

Reference Sire G



SydGen Enhance
Sire of Ref sire G



SydGen Mary
Blackbird 6821
Dam of Ref Sire G

Introducing Our Newest Herd Sire Aquisitions

H Baldridge Elroy E546

Born: 06/03/17 **19109248** **Freeze Brand: E546** **Bull**

G A R Prophet #+*
Baldridge Beast Mode B074 +*
17960722 Baldridge Isabel Y69 *
 Ponca Creek Black Eagle 106 *
Baldridge Blackbird Z081 +
17314963 Baldridge Blackbird 34K

C R A Bextor 872 5205 608 #
 G A R Objective 1885 +
 Styles Upgrade J59 #*
 Baldridge Isabel T935 +
 Connealy Concrete
 T K Queen SRP P89 #
 Baldridge Bob
 Baldridge Blackbird 181H



CED	BW	WW	YW	SC	DOC	HP	CEM	Milk	
+13	+4	+73	+133	+1.76	+26	I+8.7	+11	+24	
CW	Marb	RE	FAT	\$M	\$W	\$B	\$C		
+53	.24	+74	.20	-.003	.20	+55	+71	+157	NA

- Selected by Peckenpaugh Angus from the 2019 Baldridge Bros Sale where he recorded a BW 74 lbs, Adj 205 day wt 748 lbs, WWR 106, adj 365 day wt 1385 lbs, YWR 114, IMF 5.06%, IMF ratio 106, RE 13.6, RE ratio 109, Rib Fat .23 and Fat ratio 96.
- His sire, Baldridge Beast Mode was the 2nd top-selling bull of the 2015 Baldridge Bros sale now featured at Genex. Beast Mode was the first of a succession of high-selling sons of Baldridge Isabel Y69 that includes the \$580,000 Baldridge Colonel C251.



Baldridge Beast Mode B074
Sire of Reference sire H

I Montana Example 7069

Born: 04/01/17 **+*18844727** **Tattoo: 7069** **Bull**

Baldridge Waylon W34 #*
Baldridge Titan A139 +*
17821946 Baldridge Forever Lady T269

G A R Progress #+*
Montana Rita B026 +*
17890136 Riverbend Rita Y606 +*

GAR-EGL Protege #+*
 Baldridge Blackcap T163 *
 Baldridge Rapid R31
 Baldridge Forever Lady P164
 G A R Predestined #*
 G A R Objective 2345 *
 Summitcrest Complete 1P55 #*
 Riverbend Rita S241 +



CED	BW	WW	YW	SC	DOC	HP	CEM	Milk			
+8	+1	+74	+134	+41	+17	+14.9	+8	+19			
CW	Marb	RE	FAT	\$M	\$W	\$B	\$C				
+51	.40	+1.07	.37	+55	.37	+0.50	.34	+54	+69	+172	NA

- Example gained National attention as the \$30,500 top-selling bull of the Nov 2018 Montana Ranch Bull & Female Sale. He is an embryo transplant son of the \$100,000 Baldridge Titan A139 from a sixth-generation embryo transplant donor dam from the famed Riverbend Rita tribe.
- His dam, by GAR Progress, is stacked for carcass excellence with a progeny IMF 3@111. Example himself posted an IMF of 5.24% to ratio 140.
- Calving ease, growth, fertility and carcass are all rolled into one tremendous EPD profile boasting WW, YW, RADG, Marb EPDs and \$G, \$B and \$C values in the top 10% or better.
- Future Peckenpaugh sales will feature sons of this dynamic young super-star.



Montana Example 7069
Reference sire I

J 44 Perfect Balance 5834

Born: 12/04/15 **+*18353122** **Tattoo: 5834** **Bull**

A A R Ten X 7008 S A #*
V A R Discovery 2240 *
17262835 Deer Valley Rita 0308 +*

Rito Revenue 5M2 of 2536 Pre #+*
Rita 0245 of Rita 7068 5M2 +
16874033 Rita 7068 of Rita 5FH8 Obj +

Mytty In Focus #*
 A A R Lady Kelton 5551 #
 Sitz Upward 307R #
 G A R Objective 2345 *
 G A R Predestined #*
 G A R Precision 2536
 S S Objective T510 0T26 #*
 Rita 5FH8 of Rita 2V5 FD +*



CED	BW	WW	YW	SC	DOC	HP	CEM	Milk			
+12	+6	+68	+136	+70	+25	+10.7	+8	+35			
CW	Marb	RE	FAT	\$M	\$W	\$B	\$C				
+60	.44	+1.17	.41	+61	.40	+0.41	.38	+58	+81	+186	NA

- Selected by Peckenpaugh Angus as the \$13,000 feature of the 2017 Fall 44 Farms Angus Bull Sale. His full brothers "in-blood" were the featured lots 1, 2 and 3 in the landmark event. As his name insinuates, Perfect Balance combines a double-digit CED, a YW EPD in the top 3%, Marb EPD in the top 4% and \$W, \$F, \$G, \$B and \$C ranging from the top 4% to the top 10% among non-parent bulls.
- His dam descends maternally from the \$7 million producing GAR Precision 2536 considered the \$B matriarch of the breed. Rita 0245 stacks four generations of AI sires that rank in the top 10% or better for Marb EPD.



44 Perfect Balance 5834
Reference sire J

Peckenpaugh Angus Two Year Old Bulls



Pecks Trending 801

Lot 1



Pecks H421 608

\$7500 top-selling maternal brother to lot 1 selected by Tom Peckenpaugh, SD

1 Pecks Trending 801

Born: 02/20/18	19573090	Tattoo: 801	Bull
V A R Discovery 2240 *	A A R Ten X 7008 S A #*		
44 Trending 4413 *	Deer Valley Rita 0308 +*		
17903712 44 Ruby 2477 +*	44 Conveyance 0X52 +*		
	B/R Ruby 1224		
	Connealy Timeline #		
Connealy Danny Boy #	Energy of Conanga 4851		
Ms Pecks Blackbird 916	Foxs Stockman 129		
16598351 Ms Pecks 365 Traveler 3310	Roth Blackbird 0260		



CED	BW	WW	YW	SC	DOC	HP	CEM	Milk			
+8	-1.3	+39	+70	+64	+21	+5.3	+7	+27			
CW	Marb	RE	FAT	\$M	\$W	\$B	\$C				
+34	.37	+70	.33	+66	.33	+001	.29	+38	+46	+122	+196

- Individual Performance: BW 72 lbs, BWR 84, 205 Wt. 667 lbs, WWR 89, 365Wt. 902 lbs, YWR 88.
- Dam's Production: BR 5@97, NR 5@102, YR 5@102. REA 3@109, Rib Fat 3@98, Rump Fat 3@96.
- Actual Ultrasound Scan Data: %IMF 5.32, REA 9.4, Rib Fat .13, Rump Fat .16.
- His dam recorded individual performance of BWR 101, WWR 109 and YWR 105 and was systematically inducted into the Peckenpaugh breeding program. Her first son was selected by Robert Person, Hartford SD at \$6500 after he posted a WWR 118 and YWR 121 in the 2014 sale. A second son was a favorite of the 2016 sale chosen by Bruce Hoffman, Rockham SD at \$6500 and in 2017, Tom Peckenpaugh chose a full brother at \$5500 and another that was the \$7500 co-top seller in 2018.
- **Recommended for heifers or cows.**

2 Pecks 543 804

Born: 02/26/18	19606771	Tattoo: 804	Bull
Hoover CC&7 H421 *	SydGen C C & 7 #*		
Pecks H421 543	Miss Blackcap Ellston F500 #		
18635220 Ms Pecks Pride 0129	Sinclair Added Value 6PV31		
	Ms Peck Pride 802		
	N Bar Emulation Ext A1747		
Sinclair Express 8V19	N Bar Blackbird S C C 2A6		
Ms Pecks Pride 4106	B A Gunsmoke Y014		
19111592 Ms Pecks GS Pride 848	Ms Pecks VRD EXT 4303		



CED	BW	WW	YW	SC	DOC	HP	CEM	Milk			
+3	+1.1	+37	+71	+87	+15	+7.5	+12	+28			
CW	Marb	RE	FAT	\$M	\$W	\$B	\$C				
+27	.34	+07	.29	+15	.30	-.033	.26	+29	+37	+95	+152

- Individual Performance: BW 76 lbs, BWR 90, 205 Wt. 709 lbs, WWR 95.
- Dam's Production: BR 2@90, NR 2@102, YR 1@102. IMF 1@114, REA 1@106. Calving Interval 2@340 days.
- Actual Ultrasound Scan Data: %IMF 4.30, REA 8.9, Rib Fat.13, Rump Fat .07.
- His maternal brother was a \$4750 herd sire selection of Lyle and Casey VanderVorst, Polluck SD from the 2019 sale offering.
- His sire was used with enthusiasm in the Peckenpaugh program, "543" is remembered as the \$11,000 top-selling bull of the 2017 sale where he recorded a WW 742 lbs, WWR 106, YW 1225 lbs and YWR 107.



Pecks 543 804

Lot 2



Pecks H421 543

\$11,000 top-selling sire of lot 2

Peckenpaugh Angus Two Year Old Bulls



Pecks Special Design 427
\$6000 maternal brother to lot 5 selected by Rod Kretchmer, Cavour SD



Pecks Commercial Bull 816 • Lot 4

3 Pecks Timeless 808

Born:	19573091	Tattoo:	808	Bull
WMR Timeless 458 #	Leachman Right Time 338-5605 #+			
Montana Timeless 426 SF *	WMR Blackcap 521			
17882038 SF Barbara 033	S A V Final Answer 0035 #*			
	SF Barbara 819 #+			
	LT 598 Bando 9074 #			
	KMD Lass 684 +			
	B A Gunsmoke Y014			
	Dahls Edella 338			

CED	BW	WW	YW	SC	DOC	HP	CEM	Milk
+8	+1	+37	+68	+1.44	+24	+7.2	+9	+34

- Individual Performance: BW 87 lbs, 205 Wt. 683 lbs, WWR 91, 365 Wt. 936 lbs, YWR 91.
- Actual Ultrasound Scan Data: %IMF 3.82, REA 9.4, Rib Fat .11, Rump Fat .11.
- His maternal sister by Montana Upward 533 SF was retained in the herd.
- **Recommended for larger heifers and cows.**

4 Pecks 816

Born:	03/03/18	Commercial	Tattoo:	816	Bull
-------	----------	------------	---------	-----	------

Angus Bull

W C C Special Design L309 #+*	Bon View New Design 878 #
Ms Pecks Lass 431	N Bar Primrose 2424
18308742 Ms Pecks 6PV31 Lass 909	Sinclair Added Value 6PV 31
	KMD Lass 70

Sire's EPDs														
CED	BW	WW	YW	SC	DOC	HP	CEM	Milk	CW	MB	RE	FAT	\$W	\$B
NA	NA	NA	NA	NA	NA	NA	NA	NA	NA	NA	NA	NA	NA	NA

- Individual Performance: BW 85 lbs, 205 Wt. 710 lbs, 365 Wt. 1125 lbs.



Pecks Trending 820 • Lot 5

5 Pecks Trending 820

Born:	03/05/18	19573092	Tattoo:	820	Bull
V A R Discovery 2240 *	A A R Ten X 7008 S A #*				
44 Trending 4413 *	Deer Valley Rita 0308 #*				
17903712 44 Ruby 2477 #*	44 Conveyance 0X52 #*				
	B/R Ruby 1224				
	Paramont Ambush 2172 #				
	R C Anita T Bando 918903				
	G A R Traveler 1489 #				
	Georgina Drive of I A R 91				

CED	BW	WW	YW	SC	DOC	HP	CEM	Milk
+5	+1.1	+53	+95	+1.16	+27	+14.6	+7	+13

- Individual Performance: BW 82 lbs, BWR 97, 205 Wt. 703 lbs, WWR 94, 365 Wt. 1017 lbs, YWR 100.
- Dam's Production: BR 6@95, NR 6@102, YR 5@102. REA 4@108.
- Adjusted Ultrasound Scan Data: %IMF 3.70, REA 11.4, Ratio 115, Rib Fat .13, Ratio 100, Rump Fat .20.
- His maternal brother was a \$6000 feature of the 2016 sale offering selected by Rod Kretchmer, Cavour SD while additional brothers have been chosen by Ryan Olson, Artesian SD; Steve Carlson, Erwin SD and Jason Harmelink, NE.
- He ranks in the top 10% for Doc and the top 15% for HP among non-parent bulls.

6 Pecks 205 821

Born:	03/05/18	19573093	Tattoo:	821	Bull
-------	----------	----------	---------	-----	------

Hoover CC&7 H421 *	SydGen CC & 7 #*
Pecks CC&7 H421 205	Miss Blackcap Ellston F500 #
17254265 Ms Pecks Blackbird 916	Connealy Danny Boy #
	Ms Pecks 365 Traveler 3310
	S A F 598 Bando 5175 #+
	Mill Coulee Barbara K 323 #
	Bon View New Design 878 #
	L V V F Hoff Hi Spade of 611

CED	BW	WW	YW	SC	DOC	HP	CEM	Milk
+3	+1.7	+37	+70	+0.84	+19	+12.2	+4	+34

- Individual Performance: BW 90 lbs, 205 Wt. 634 lbs, WWR 85, 365 Wt. 933 lbs, YWR 92.
- Dam's Production: BR 8@96, NR 8@102, YR 5@99. IMF 5@105, REA 5@100, Rib Fat 5@99, Rump Fat 5@97.
- Adjusted Ultrasound Scan Data: %IMF 4.3, Ratio 106, REA 9.9, Ratio 100, Rib Fat .10, Ratio 77, Rump Fat .09, Ratio 64.
- His dam was a remunerative cow in the Brice Conover herd in Iowa where she produced herd sires for Clarke Burns, Brookfield MO; Steve Couchman, Corydon IA and D-H Cattle Co, Cumming IA through former IA Angus Bull Tests.
- Her 2017 son by Hoover Electrify M34 was the herd sire selection of HT Albrecht, De Smet SD at \$3500.
- His sire, Pecks CC&7 H421 205 was a \$6500 feature of the 2014 sale now co-owned with Robert Person, Hartford SD. He posted individual performance featuring a WWR 118 and YWR 121.

Peckenpaugh Angus Two Year Old Bulls



Pecks Timeless 822

Lot 7



Pecks Electrify 564

\$5000 maternal brother to lot 7 selected by Peckenpaugh Ranch, SD

7 Pecks Timeless 822

Born: 03/06/18	19573094	Tattoo: 822	Bull
WMR Timeless 458 #	Leachman Right Time 338-5605 #+		
Montana Timeless 426 SF *	WMR Blackcap 521		
17882038 SF Barbara 033	S A V Final Answer 0035 #*		
	SF Barbara 819 #+		
	Bon View New Design 878 #		
Dahls New Design 15	Dahls Queen 429		
Dahls Enchantress 498	N Bar Emulation EXT #*		
14877061 Dahls Enchantress 428	Enchantress 511 D A F		

CED	BW	WW	YW	SC	DOC	HP	CEM	Milk			
+0	+3.7	+57	+98	+1.11	+33	+9.7	+11	+23			
CW	Marb	RE	FAT	\$M	\$W	\$B	\$C				
+44	.40	+20	.36	+49	.36	+0.21	.34	+55	+49	+111	+199

- Individual Performance: BW 88 lbs, 205 Wt. 760 lbs, WWR 102, 365 Wt. 1101 lbs, YWR 108.
- Dam's Production: BR 11@99, NR 11@101, YR 5@101. REA 6@103, Rib Fat 6@97, Rump Fat 6@99. Calving Interval 12@362 days.
- Adjusted Ultrasound Scan Data: %IMF 3.36, REA 10.7, Ratio 108, Rib Fat .18, Rump Fat .17.
- His maternal brother posted a WWR 115, YWR 106 and IMF ratio 110 and was chosen by HT Albrecht, DeSmet SD. Another brother was the \$5000 calving ease selection of Peckenpaugh Ranch, Carthage SD.
- He ranks in the top 1% of the breed for Docility EPD.

8 Pecks Trending 823

Born: 03/06/18	19573095	Tattoo: 823	Bull
V A R Discovery 2240 *	A A R Ten X 7008 S A #*		
44 Trending 4413 *	Deer Valley Rita 0308 #*		
17903712 44 Ruby 2477 #*	44 Conveyance 0X52 #*		
	B/R Ruby 1224		
	MOGCK Whispering Wind 584 #		
MOGCK Whispering Wind 346	Mogck Ann 1064 #		
Sik Elbance 230368	Hyline Right Time 338 #		
16000549 Sik Elbance 23036	Sik Elbance 23053		

CED	BW	WW	YW	SC	DOC	HP	CEM	Milk			
+5	+2.4	+60	+106	+20	+28	+10.8	+1	+25			
CW	Marb	RE	FAT	\$M	\$W	\$B	\$C				
+46	.39	+86	.35	+57	.35	-0.01	.33	+61	+60	+147	+252

- Individual Performance: BW 85 lbs, BWR 100, 205 Wt. 735 lbs, WWR 98, 365 Wt. 1025 lbs, YWR 100.
- Dam's Production: BR 5@100, NR 5@103, YR 3@99. IMF 4@101, REA 4@102. Calving Interval 9@362 days.
- Adjusted Ultrasound Scan Data: %IMF 3.76, REA 10.3, Ratio 104, Rib Fat .17, Rump Fat .18.
- His maternal brothers include the \$6500 purchase of Kurt Hoffman in 2016 and the 2014 sale alumni that was chosen by Robert Clouser, Huron SD.
- Maternal great grandsire, Mogck Whispering Wind is a SydGen herdsire with an outcross pedigree, curve-bending credentials, optimal milk and outlier values for \$W and IMF.
- He recorded the #2 highest MB EPD, as well as the #4 highest \$B and \$C values in the sale offering.



Pecks Trending 823

Lot 8



Pecks H421 404

\$6500 maternal brother to lot 8 selected by Kurt Hoffman, Dell Rapids, SD

Peckenpaugh Angus Two Year Old Bulls



Pecks Electrify 824

Lot 9



9 Pecks Electrify 824

Born: 03/06/18	19573096	Tattoo: 824	Bull
Hoover Electrify Hoover Electrify M34 17603593 Elbamere Queen Ellston J10	Basin Excitement #* Blkcp Empress Ellston D241 SydGen C C & 7 #* Elbamere Queen S36 # S A V Brilliance 8077 #* Gannon Lassie F618 TC Total 410 # Sitz JLS Ideal 533P +*		
CAV Brilliance 618-2618 Ms Pecks Ideal 438 18678576 Deer Valley Ideal 12127 +*			

CED	BW	WW	YW	SC	DOC	HP	CEM	Milk			
+2	+1.8	+52	+95	+55	+21	+13.5	+8	+21			
CW	Marb	RE	FAT	\$M	\$W	\$B	\$C				
+33	.39	+59	.35	+51	.35	+0.11	.32	+64	+50	+138	+243

- Individual Performance: BW 83 lbs, BWR 98, 205 Wt. 743 lbs, WWR 99, 365 Wt. 991 lbs, YWR 97.
- Dam's Production: BR 1@98, NR 1@99, YR 1@97. IMF 1@123, REA 1@101, Rib Fat 1@85, Rump Fat 1@79.
- Adjusted Ultrasound Scan Data: %IMF 4.99, Ratio 123, REA 10.0, Ratio 101, Rib Fat .11, Ratio 85, Rump Fat .11, Ratio 79.
- His dam is a young cow off to a great start. Her dam, Deer Valley Ideal 12127 is a granddaughter of the legendary Ideal 4465 of 6807 4286 who has generated more than \$2.5 million in progeny sales. This cow family is recognized as foremost and most accomplished in the feed efficiency arena.
- He posts the #6 highest \$C value in the sale offering.

10 Pecks Timeless 827

Born: 03/06/18	19573097	Tattoo: 827	Bull
WMR Timeless 458 # Montana Timeless 426 SF * 17882038 SF Barbara 033	Leachman Right Time 338-5605 #+ WMR Blackcap 521 S A V Final Answer 0035 #* SF Barbara 819 #+ SydGen C C & 7 #* Miss Blackcap Ellston F500 # Sinclair Added Value 6PV31 Ms Pecks Regulator 6232		
Hoover CC&7 H421 * Ms Pecks Pride 413 18317970 Ms Pecks Pride 836			

CED	BW	WW	YW	SC	DOC	HP	CEM	Milk			
+6	+2.2	+52	+82	+77	+34	+11.9	+8	+28			
CW	Marb	RE	FAT	\$M	\$W	\$B	\$C				
+24	.38	+35	.34	+48	.35	-.001	.32	+71	+59	+86	+183

- Individual Performance: BW 91 lbs, 205 Wt. 708 lbs, WWR 95, 365 Wt. 967 lbs, YWR 95.
- Dam's Production: NR 1@95, YR 1@95. IMF 1@106, Rib Fat 1@85, Rump Fat 1@79.
- Adjusted Ultrasound Scan Data: %IMF 4.29, Ratio 106, REA 9.6, Ratio 97, Rib Fat .11, Ratio 85, Rump Fat .11, Ratio 79.
- Maternal grandsire, Hoover CC&7 H421 was selected by Peckenpaugh Angus as the featured fall bull in the 2011 Hoover Angus Sale where he posted enviable individual performance of BW 73 lbs, 205-day wt 838 lbs, WWR 122, 365-day wt 1337 lbs, and YWR 110. Multiple years of progeny records have proven H421 to be a noteworthy calving ease sire with a BWR 112@98.
- He ranks in the top 1% of the breed for Docility EPD.

GUARANTEE

All bulls selling for \$3,000 or more are guaranteed against breeding injury for the first breeding season. Breeding season is defined as the 90-day period following the first turnout of the bulls.

If a replacement bull is available, he will be provided. Or, if the buyer prefers, credit toward one bull will be given in the following year's sale, less salvage value of the injured bull. Please notify us as soon as possible should injury occur and prior to the injured bull being sold for salvage.

Peckenpaugh Angus Two Year Old Bulls



11 Pecks 255 Ranger 828

Born: 03/07/18 **19573136** **Tattoo: 828** **Bull**

Jindra Double Vision #*
Jindra Double Vision J 342
18380903 Jindra Rosella J 151 342

Hoover CC&7 H421 *
Pecks Edella 416 *
18227634 Ms Pecks 6BT2 Edella 930

Connealy Reflection #
 Hoff Rachel 8312 405 +
 Connealy Guinness #*
 Jindra Rosella J 825 151
 SydGen C C & 7 #*
 Miss Blackcap Ellston F500 #
 Sinclair IN Time 6BT2
 Dahls Edella 348



CED	BW	WW	YW	SC	DOC	HP	CEM	Milk			
+7	+4	+48	+83	+83	+30	+11.2	+11	+24			
CW	Marb	RE	FAT	\$M	\$W	\$B	\$C				
+34	.38	+58	.34	+35	.35	+037	.32	+61	+52	+125	+223

- Individual Performance: BW 85 lbs, BWR 100, 205 Wt. 741 lbs, WWR 99, 365 Wt. 971 lbs, YWR 95.
- Dam's Production: NR 3@103, YR 3@102. IMF 3@105, REA 3@107. Calving Interval 3@344 days.
- Adjusted Ultrasound Scan Data: %IMF 4.28, Ratio 106, REA 9.7, Rib Fat .13, Ratio 100, Rump Fat .21.
- His maternal brother was the \$8000 2nd top-selling bull of the 2019 sale offering selected by Peckenpaugh Ranch, SD.
- He ranks in the top 4% for Docility EPD among non-parent bulls.
- **Recommended for larger heifers and cows.**

Pecks 255 Ranger 828

Lot 11



Pecks Timeless 750

\$8000 maternal brother to lot 11 selected by Peckenpaugh Ranch

12 Pecks Retail Product 829

Born: 03/07/18 ***19573740** **Tattoo: 829** **Bull**

G A R Precision 1680 #
G A R Retail Product #
13395329 G A R Ext 4927 +

W C C Special Design L309 #+*
Ms Pecks Sally 321
17880640 Ms Pecks Sally 823

Tehama Bando 155 #
 9J9 G A R 856
 N Bar Emulation EXT #*
 G A R Traveler 641
 Bon View New Design 878 #
 N Bar Primrose 2424
 Sinclair IN Time 6BT2
 Ms Pecks Regulator Sally6231



CED	BW	WW	YW	SC	DOC	HP	CEM	Milk			
+6	+3	+49	+91	-15	+11	+15.5	+11	+19			
CW	Marb	RE	FAT	\$M	\$W	\$B	\$C				
+35	.43	+65	.39	+38	.39	+021	.37	+67	+48	+129	+234

- Individual Performance: BW 86 lbs, BWR 100, 205 Wt. 721 lbs, WWR 97, 365 Wt. 983 lbs, YWR 97.
- Dam's Production: BR 1@100, NR 1@97, YR 1@97. IMF 3@105.
- Adjusted Ultrasound Scan Data: %IMF 3.80, REA 10.3, Ratio 104, Rib Fat .11, Ratio 85, Rump Fat .13, Ratio 93.
- His dam recorded astonishing individual performance featuring a 205-day wt 712 lbs, WWR 122.
- Ranks in the top 10% for Heifer Pregnancy.
- He is the lone son of the legendary Select Sires carcass trait sire, GAR Retail Product in the offering.
- **Recommended for larger heifers and cows.**



Pecks Retail Product 829

Lot 12



GAR Retail Product
 Sire of Lot 12

Peckenpaugh Angus Two Year Old Bulls



Pecks Timeless 426 709

\$5000 maternal brother to lot 13
chosen by Peckenpaugh Ranch



13 Pecks 255 Ranger 830

Born: 03/07/18	19573098	Tattoo: 830	Bull
Jindra Double Vision # Jindra Double Vision J 342 18380903 Jindra Rosella J 151 342	Connealy Reflection # Hoff Rachel 8312 405 + Connealy Guinness #* Jindra Rosella J 825 151 SydGen C C & 7 #* Miss Blackcap Ellston F500 # B A Gunsmoke Y014 Ms Pecks VRD EXT 4303		
Hoover CC&7 H421 * Ms Pecks Pride 325 17879827 Ms Pecks GS Pride 848			

CED	BW	WW	YW	SC	DOC	HP	CEM	Milk			
+7	+8	+48	+89	+38	+18	+11.7	+6	+27			
CW	Marb	RE	FAT	\$M	\$W	\$B	\$C				
+35	.37	+46	.33	+20	.33	+047	.31	+57	+54	+109	+198

- Individual Performance: BW 82 lbs, BWR 95, 205 Wt. 651 lbs, WWR 87, 365 Wt. 965 lbs, YWR 94.
- Dam's Production: BR 3@94, YR 3@99. REA 2@101, Rump Fat 2@86. Calving Interval 3@350 days.
- Adjusted Ultrasound Scan Data: %IMF 3.35, REA 10.3, Ratio 104, Rib Fat .14, Rump Fat .12, Ratio 86.
- His maternal brother was the #1 heaviest adj yearling wt of the 2019 sale offering selling to Peckenpaugh Ranch, SD at \$5000. Another brother was the \$3750 selection of Lyle and Louise Vander Vorste, Pollock SD.
- **Recommended for heifers or cows.**

14 Pecks 255 Ranger 831

Born: 03/07/18	19573099	Tattoo: 831	Bull
Jindra Double Vision #* Jindra Double Vision J 342 18380903 Jindra Rosella J 151 342	Connealy Reflection # Hoff Rachel 8312 405 + Connealy Guinness #* Jindra Rosella J 825 151 SydGen C C & 7 #* Miss Blackcap Ellston F500 # TC Boom Time 434 Ms Pecks VRD Kathleen 5201		
Hoover CC&7 H421 * Ms Pecks Pride 372 17879836 Ms Pecks Pride 012			

CED	BW	WW	YW	SC	DOC	HP	CEM	Milk			
+7	+2	+42	+75	+69	+22	+13.9	+5	+32			
CW	Marb	RE	FAT	\$M	\$W	\$B	\$C				
+19	.37	+21	.33	+03	.34	+025	.31	+52	+52	+82	+158

- Individual Performance: BW 84 lbs, BWR 98, 205 Wt. 676 lbs, WWR 90, 365 Wt. 927 lbs, YWR 90.
- Dam's Production: BR 1@98.
- Adjusted Ultrasound Scan Data: %IMF 3.69, REA 9.6, Rib Fat .11, Ratio 85, Rump Fat .13, Ratio 93.
- Keep every daughter, as he ranks in the top 20% for Heifer Pregnancy EPD and the top 10% for Milk EPD.
- **Recommended for heifers or cows.**

BULL WINTERING PROGRAM

Peckenpaugh Angus will offer **FREE** bull wintering until April 1, 2020. Buyer will be required to purchase a minimum of 90 days mortality insurance at a rate of 4% of the purchase price. Additional wintering fees of \$3.00 per day will be assessed after April 1st.

If you choose to take your bull home sale day, you will receive \$50 off your purchase price.

Peckenpaugh Angus Two Year Old Bulls



Pecks Electrify 6101

\$5000 maternal brother to Lot 18
selected by Roger Nichols, De Smet, SD



Pecks 250 680
\$4500 maternal brother to lot 16
Selected by Carl Koenig, SD

15 Pecks 543 833

Born:	19573100	Tattoo:	833	Bull
Hoover CC&7 H421 *	SydGen C C & 7 #*			
Pecks H421 543	Miss Blackcap Ellston F500 #			
18635220 Ms Pecks Pride 0129	Sinclair Added Value 6PV31			
	Ms Peck Pride 802			
	S A V Final Answer 0035 #*			
HARB Pendleton 765 J H #	H A R B Black Lady 375 J H #			
Ms Pecks Polly 356	Sinclair Added Value 6PV31			
18762927 Ms Pecks Polly 925	Ms Pecks Polly 7202			



CED	BW	WW	YW	SC	DOC	HP	CEM	Milk			
+6	+2.1	+48	+86	+1.45	+11	+8.6	+10	+32			
CW	Marb	RE	FAT	\$M	\$W	\$B	\$C				
+35	.35	+46	.31	+22	.32	-0.07	.29	+43	+55	+115	+192

- Individual Performance: BW 88 lbs, 205 Wt. 683 lbs, WWR 91, 365 Wt. 997 lbs, YWR 97.
- Dam's Production: NR 2@96, YR 2@98. IMF 2@102, REA 2@110, Rib Fat 2@82, Rump Fat 2@88. Calving Interval 3@347 days.
- Adjusted Ultrasound Scan Data: %IMF 4.88, Ratio 120, REA 11.5, Ratio 116, Rib Fat .13, Ratio 100, Rump Fat .16.
- His maternal brother was the \$3500 herd sire acquisition of Robert Stahl, Mitchell SD from the 2018 sale offering.
- He shares the #1 largest ribeye area in the sale.

16 Pecks Timeless 836

Born:	19573101	Tattoo:	836	Bull
WMR Timeless 458 #	Leachman Right Time 338-5605 #+			
Montana Timeless 426 SF *	WMR Blackcap 521			
17882038 SF Barbara 033	S A V Final Answer 0035 #*			
	SF Barbara 819 #			
	Hylene Right Way 781 #			
Pecks Rightway Fame 7227	Ms Pecks EXT Fame 3312			
Ms Pecks Pride 155	B A Gunsmoke Y014			
17256191 Ms Pecks GS Pride 848	Ms Pecks VRD EXT 4303			



CED	BW	WW	YW	SC	DOC	HP	CEM	Milk			
+2	+3.7	+45	+72	+5.3	+19	+13.4	+10	+26			
CW	Marb	RE	FAT	\$M	\$W	\$B	\$C				
+23	.38	+54	.34	+30	.34	+0.03	.32	+68	+43	+104	+203

- Individual Performance: BW 95 lbs, 205 Wt. 724 lbs, WWR 97, 365 Wt. 980 lbs, YWR 96.
- Dam's Production: NR 3@99, YR 3@99. IMF 3@106, Rib Fat 3@91, Rump Fat 3@71. Calving Interval 5@360 days.
- Adjusted Ultrasound Scan Data: %IMF 4.21, Ratio 104, REA 8.8, Rib Fat .11, Ratio 85, Rump Fat .09, Ratio 64.
- Carl Koenig, Fairfax SD selected his maternal brother in 2018 at \$4500.
- Two maternal sisters have been returned to the breeding program at Peckenpaugh Angus.

17 Pecks Trending 843

Born:	19573102	Tattoo:	843	Bull
V A R Discovery 2240 *	A A R Ten X 7008 S A #*			
44 Trending 4413 *	Deer Valley Rita 0308 +*			
17903712 44 Ruby 2477 +*	44 Conveyance 0X52 +*			
	B/R Ruby 1224			
	Hylene Right Way 781 #			
Hylene Right Way 781 #	Hylene Ellen 86 +			
Ms Pecks EXT Rightway 010	N Bar Emulation EXT #*			
16878241 Fortunes 6015 of EXT 110 +	LC R Precision 110 +			



CED	BW	WW	YW	SC	DOC	HP	CEM	Milk			
+7	+8	+54	+94	+6.2	+15	+7.7	+11	+23			
CW	Marb	RE	FAT	\$M	\$W	\$B	\$C				
+37	.39	+36	.36	+37	.36	+0.08	.33	+54	+57	+111	+198

- Individual Performance: BW 85 lbs, BWR 99, 205 Wt. 713 lbs, WWR 95, 365 Wt. 982 lbs, YWR 96.
- Dam's Production: BR 2@100, YR 2@98. Calving Interval 5@359 days.
- Adjusted Ultrasound Scan Data: %IMF 3.48, REA 9.3, Rib Fat .12, Ratio 92, Rump Fat .13, Ratio 93.
- The 3rd dam, LCR Precision 110 is a full sister to the \$7 million producing GAR Precision 2536 considered the \$B matriarch of the breed.
- His maternal brother was chosen by Rod Kretchmer, Cavour SD in 2018 at \$4500.
- Recommended for larger heifers and cows.**

18 Pecks Electrify 845

Born:	19573103	Tattoo:	845	Bull
Hoover Electrify	Basin Excitement #*			
Hoover Electrify M34	Blkcp Empress Ellston D241			
17603593 Elbamere Queen Ellston J10	SydGen C C & 7 #*			
	Elbamere Queen S36 #			
	SydGen C C & 7 #*			
Hoover CC&7 H421 *	Miss Blackcap Ellston F500 #			
Ms Pecks Blueblood Lady 349	MOGCK Whispering Wind 346			
18432240 Sik Blueblood Lady 373768	Sik Blueblood Lady 37376			



CED	BW	WW	YW	SC	DOC	HP	CEM	Milk			
+0	+2.9	+33	+51	+1.42	+21	+15.3	+5	+25			
CW	Marb	RE	FAT	\$M	\$W	\$B	\$C				
+14	.34	+70	.29	+34	.30	-0.02	.26	+60	+30	+103	+194

- Individual Performance: BW 85 lbs, BWR 99, 205 Wt. 672 lbs, WWR 90.
- Dam's Production: NR 2@96, YR 1@97. IMF 1@115, REA 1@101, Rib Fat 1@93, Rump Fat 1@94. Calving Interval 4@362 days.
- His maternal brother was the \$5000 herd sire selection of Roger Nichols, De Smet SD in 2018.
- He is a high fertility bull ranking in the top 15% for SC and top 10% for HP EPDs.

Peckenpaugh Angus Two Year Old Bulls

Matt, Bob, Jim, Late Tom & Tony 2018 Sale



19 Pecks 255 Ranger 847

Born: 03/12/18 19573104 **Tattoo: 847** **Bull**

Jindra Double Vision #*
Jindra Double Vision J 342
 17388903 Jindra Rosella J 151 342

S A V Net Worth 4200 #
Ms Pecks Pride 208
 17388836 Ms Pecks EXT Stockman 3305

Connealy Reflection #
 Hoff Rachel 8312 405 +
 Connealy Guinness #*
 Jindra Rosella J 825 151
 S A V 8180 Traveler 004 #
 S A V May 2410 +
 Foxx Stockman 129
 Ms Pecks EXT Rancher 01 PA



CED	BW	WW	YW	SC	DOC	HP	CEM	Milk			
+3	+6	+47	+82	+75	+10	+15.8	+8	+24			
CW	Marb	RE	FAT	\$M	\$W	\$B	\$C				
+28	.39	+60	.35	+04	.35	+025	.33	+55	+50	+117	+207

- Individual Performance: BW 84 lbs, BWR 98, 205 Wt. 611 lbs, WWR 82, 365 Wt. 870 lbs, YWR 85.
- Dam's Production: BR 3@91. IMF 3@125, Rib Fat 3@96, Rump Fat 3@91. Calving Interval 3@362 days.
- Adjusted Ultrasound Scan Data: %IMF 4.8, Ratio 119, REA 8.6, Rib Fat .12, Ratio 92, Rump Fat .11, Ratio 79.
- His dam recorded individual performance featuring a BW 84 lbs, WW 626 lbs, WWR 112.
- His maternal brother was selected by Jerry Bush, Pierre SD from the 2019 sale offering.
- Recommended for larger heifers and cows.**

20 Pecks Double Vision 848

Born: 03/12/18 19573105 **Tattoo: 848** **Bull**

Connealy Reflection #
Jindra Double Vision #*
 16748826 Hoff Rachel 8312 405 +

Sinclair Added Value 6PV31
Ms Pecks Pride 0128
 17800548 Ms Pecks Pride 873

Bon View New Design 878 #
 Happy Grill of Conanga 6260
 Hoff Limited Edition S C 594 #
 Hoff Miss Expo S C 4223
 Sinclair Net Present Value #+*
 Sinclair Queen M 05A3 1Z13
 Pecks VRD Blackcap 6209
 Ms Pecks VRD TC Flash 5226



CED	BW	WW	YW	SC	DOC	HP	CEM	Milk			
+9	-2	+35	+64	+43	+24	+10.7	+12	+23			
CW	Marb	RE	FAT	\$M	\$W	\$B	\$C				
+19	.40	+74	.36	-04	.36	+043	.34	+57	+35	+102	+189

- Individual Performance: BW 79 lbs, BWR 92, 205 Wt. 627 lbs, WWR 84, 365 Wt. 885 lbs, YWR 87.
- Dam's Production: BR 2@97. IMF 2@106.
- Adjusted Ultrasound Scan Data: %IMF 4.13, Ratio 102, REA 8.4, Rib Fat .20, Rump Fat .21.
- His maternal sister in the herd weaned her first calf posting a BWR 1@93 and NR 1@116 on AHIR.
- Recommended for heifers or cows.**

21 Pecks Timeless 850

Born: 03/13/18 19580958 **Tattoo: 850** **Bull**

WMR Timeless 458 #
Montana Timeless 426 SF *
 17882038 SF Barbara 033

Hoover CC&7 H421 *
Ms Pecks Blackbird 255
 19144445 Ms Pecks Blackbird Queen 972

Leachman Right Time 338-5605 #+
 WMR Blackcap 521
 S A V Final Answer 0035 #*
 SF Barbara 819 #+
 SydGen C C & 7 #*
 Miss Blackcap Ellston F500 #
 Sinclair Added Value 6PV31
 Ms Pecks Blackbird Queen 7260



CED	BW	WW	YW	SC	DOC	HP	CEM	Milk			
+9	+1.1	+55	+85	+22	+35	+11.7	+10	+19			
CW	Marb	RE	FAT	\$M	\$W	\$B	\$C				
+37	.39	+09	.35	+46	.35	+012	.33	+75	+55	+105	+211

- Individual Performance: BW 84 lbs, BWR 98, 205 Wt. 695 lbs, WWR 93.
- Dam's Production: BR 1@98.
- Adjusted Ultrasound Scan Data: %IMF 3.37, REA 9.7, Rib Fat .10, Ratio 77, Rump Fat .04, Ratio 29.
- Maternal grandsire, Hoover H421 is revered in the program for maternal attributes. Three of four generations on his dam's side are Pathfinder dams and he ranks in the top 10% for heifer pregnancy.
- Maternal grandam produced the lot 32 in this offering.
- He ranks in the top 1% for Docility EPD among non-parent bulls.
- Recommended for heifers or cows.**

22 Pecks Boom Time 851

Born: 03/13/18 **Commercial** **Tattoo: 851** **Bull**

TC Boom Time 434
Pecks Boom Time 014
 17054792 Ms Pecks Polly 7202

Leachman Boom Time #
 TC Quality 7122 +
 G A R Retail Product #
 Bon View Polly 1025

Commercial Angus Cow

Sire's EPDs														
CED	BW	WW	YW	SC	DOC	HP	CEM	Milk	CW	MB	RE	FAT	\$W	\$B
+6	+5	+37	+68	+95	+12	+9.2	+11	+23	+30	+36	+15	+032	+46	+101

Dam's EPDs														
CED	BW	WW	YW	SC	DOC	HP	CEM	Milk	CW	MB	RE	FAT	\$W	\$B
NA	NA	NA	NA	NA	NA	NA	NA	NA	NA	NA	NA	NA	NA	NA

- Individual Performance: BW 85 lbs, 205 Wt. 695 lbs, 365 Wt. 1100 lbs.

Peckenpaugh Angus Two Year Old Bulls



23 Pecks 255 Ranger 854

Born: 03/14/18 19573107 Tattoo: 854 Bull

Jindra Double Vision #*
Jindra Double Vision J 342
 18380903 Jindra Rosella J 151 342

HARB Pendleton 765 J H #
Ms Pecks Pride 062
 19403566 Ms Pecks Pride 819

Connealy Reflection #
 Hoff Rachel 8312 405 +
 Connealy Guinness #*
 Jindra Rosella J 825 151
 S A V Final Answer 0035 #*
 H A R B Black Lady 375 J H #
 Boyd Landmark 405 +
 Ms Pecks Flash Rancher 1310



CED	BW	WW	YW	SC	DOC	HP	CEM	Milk
+10	-1.2	+50	+96	+1.57	+20	+14.8	+11	+35
CW	Marb	RE	FAT	\$M	\$W	\$B	\$C	
+42	.37	+77 .33	+13 .33	+052 .29	+58	+65	+140	+240

- Individual Performance: BW 84 lbs, BWR 100, 205 Wt. 706 lbs, WWR 100.
- Dam's Production: BR 1@100, NR 1@100.
- He has an amazing EPD profile ranking in the top 20% for CED, Top 10% for BW and SC, top 15% for HP and top 4% for Milk.
- He boasts the #4 lowest BW EPD in the sale offering.
- **Recommended for heifers or cows.**

24 Pecks Trending 859

Born: 03/15/18 19573108 Tattoo: 859 Bull

V A R Discovery 2240 *
44 Trending 4413 *
 17903712 44 Ruby 2477 +*

HARB Pendleton 765 J H #
Miss Pecks Pride 150
 17327486 Ms Pecks 6PV31 Pride 939

A A R Ten X 7008 S A #*
 Deer Valley Rita 0308 +*
 44 Conveyance 0X52 +*
 B/R Ruby 1224
 S A V Final Answer 0035 #*
 H A R B Black Lady 375 J H #
 Sinclair Added Value 6PV31
 Ms Pecks Regulator Pride 7233



CED	BW	WW	YW	SC	DOC	HP	CEM	Milk
+7	+2.4	+57	+104	+1.51	+15	+10.2	+14	+21
CW	Marb	RE	FAT	\$M	\$W	\$B	\$C	
+44	.40	+84 .37	+62 .37	+026 .34	+45	+49	+149	+238

- Individual Performance: BW 85 lbs, BWR 99, 205 Wt. 719 lbs, WWR 96, 365 Wt. 1093 lbs, YWR 107.
- Dam's Production: BR 2@96, NR 2@98, YR 2@105. IMF 2@111, REA 2@108, Rump Fat 2@94.
- Adjusted Ultrasound Scan Data: %IMF 5.08, Ratio 125, REA 10.1, Ratio 102, Rib Fat .18, Rump Fat .15.
- Andrew Chipman, Virgil SD selected his maternal brother from the 2016 sale offering at \$5000.
- He recorded the #3 highest IMF measurement in the sale offering and was rewarded with the #3 highest MB EPD. In addition, he is the #3 \$B bull and the top CEM EPD in the entire sale offering.
- **Recommended for larger heifers and cows.**



Pecks Trending 859

Lot 24

Carcass Bull with top 20% MB, \$G and \$B values.

Peckenpaugh Angus Two Year Old Bulls



Pecks Timeless 860

Lot 25



Pecks Timeless 790

\$9000 top-selling 2019 paternal half-brother to lot 25 selected by Jerry Bush, Pierre SD

25 Pecks Timeless 860

Born: 03/15/18	19573109	Tattoo: 860	Bull
WMR Timeless 458 # Montana Timeless 426 SF * 17882038 SF Barbara 033	Leachman Right Time 338-5605 #+ WMR Blackcap 521 S A V Final Answer 0035 #* SF Barbara 819 #+ Benfield Substance 8506 #* Bristy of Conanga 9283 WCC Master General U140 + Flag Queen 90531 +		
Connealy Substance 9283 Ponca Creek Queen 551 18113742 Flag Queen 10508			



CED	BW	WW	YW	SC	DOC	HP	CEM	Milk
+7	+2.1	+57	+104	+81	+27	+12.5	+9	+31
CW	Marb	RE	FAT	\$M	\$W	\$B	\$C	
+51	.37	+25 .33	+74 .34	+019 .31	+59	+62	+143	+244

- Individual Performance: BW 77 lbs, BWR 93, 205 Wt. 645 lbs, WWR 86, 365 Wt. 954 lbs, YWR 93.
- Dam's Production: BR 1@93, IMF 1@107, REA 1@108, Rib Fat 1@69, Rump Fat 1@79.
- Adjusted Ultrasound Scan Data: %IMF 4.34, Ratio 107, REA 10.7, Ratio 108, Rib Fat .09, Ratio 69, Rump Fat .11, Ratio 79.
- He posted the #5 highest \$Combined value (\$C) in the sale offering.
- **Recommended for heifers or cows.**

26 Pecks 255 Ranger 862

Born: 03/15/18	19573110	Tattoo: 862	Bull
Jindra Double Vision #* Jindra Double Vision J 342 18380903 Jindra Rosella J 151 342	Connealy Reflection # Hoff Rachel 8312 405 + Connealy Guinness #* Jindra Rosella J 825 151 Vermilion Dateline 7078 # Sik Blueblood Lady 37376 Sinclair Added Value 6PV3 1 Sik Rita 79818		
Pecks VRD 967 Ms Pecks Rita 4131 19111591 Ms Pecks Rita 051			



CED	BW	WW	YW	SC	DOC	HP	CEM	Milk
+7	+1.3	+56	+98	+1.62	+17	+10.9	+7	+21
CW	Marb	RE	FAT	\$M	\$W	\$B	\$C	
+40	.36	+82 .32	+05 .32	+055 .28	+46	+53	+136	+222

- Individual Performance: BW 79 lbs, BWR 100, 205 Wt. 643 lbs, WWR 97.
- Dam's Production: BR 2@100, NR 2@96, YR 1@95. Calving Interval 2@323 days.
- His maternal brother was the \$3500 herd sire selection of Terry Spilde, Highmore SD from the 2019 auction.
- He posted the #1 highest SC EPD and the #4 highest MB EPD in the sale.
- **Recommended for heifers or cows.**



Pecks 255 Ranger 862

Lot 26

**#1 highest SC EPD
and #4 highest
MB EPD**

Peckenpaugh Angus Two Year Old Bulls



Pecks H421 863 • Lot 27



Hoover CC&7 H421
Sire of Lot 27



Pecks H421 340
\$8000 full brother to Lot 27
Selected by Ron Blachford, De Smet SD

27 Pecks H421 863

Born: 03/15/18 19603558 Tattoo: 863 Bull

SydGen C C & 7 #*
Hoover CC&7 H421 *
16635147 Miss Blackcap Ellston F500

J K Kahuna 530
Sik Princess 1048247
15824388 Sik Princess 104824

S A F Connection #+
SydGen Forever Lady 4087
Woodhill Statesman 54K-90N #
Miss Blackcap Ellston B50
River Hills Kahuna 175M #+
J K Miss Georgina 263 #
C A Future Direction 5321 #
Sik Princess 10482



CED	BW	WW	YW	SC	DOC	HP	CEM	Milk			
+11	-.4	+44	+71	+94	+18	+12.4	+11	+25			
CW	Marb	RE	FAT	\$M	\$W	\$B	\$C				
+9	.39	+.38	.35	+.10	.35	+.020	.33	+65	+52	+87	+178

- Individual Performance: BW 80 lbs, BWR 94, 205 Wt. 656 lbs, WWR 88, 365 Wt. 870 lbs, YWR 85.
- Dam's Production: BR 6@92, NR 6@104, YR 4@104.
- Adjusted Ultrasound Scan Data: %IMF 3.64, REA 8.2, Rib Fat .09, Ratio 69, Rump Fat .15.
- His 2010 maternal brother recorded an astonishing BWR 97, WWR 123 and YWR 116, while a full brother posted a BWR 90, WWR 103, YWR 104, IMF ratio 130 and RE ratio 102 and was selected by Ron Blachford, De Smet SD in 2015 at \$8000.
- He shares the #2 CED in the sale offering.
- **Recommended for heifers or cows.**

28 Pecks Timeless 866

Born: 03/17/18 19573111 Tattoo: 866 Bull

WMR Timeless 458 #
Montana Timeless 426 SF *
17882038 SF Barbara 033

Pecks VRD 967
Ms Pecks Pride 499
19401569 Ms Pecks Pride 978

Leachman Right Time 338-5605 #+
WMR Blackcap 521
S A V Final Answer 0035 #*
SF Barbara 819 #+
Vermilion Dateline 7078 #
Sik Blueblood Lady 37376
Sinclair IN Time 6BT2
Ms Pecks Rightline Pride6258



CED	BW	WW	YW	SC	DOC	HP	CEM	Milk			
+8	+2.0	+54	+95	+90	+30	+13.3	+13	+23			
CW	Marb	RE	FAT	\$M	\$W	\$B	\$C				
+37	.38	+.27	.34	+.63	.34	-.009	.32	+69	+54	+119	+223

- Individual Performance: BW 88 lbs, 205 Wt. 702 lbs, WWR 94, 365 Wt. 1043 lbs, YWR 102.
- Dam's Production: YR 1@102. IMF 1@101, REA 1@109, Rib Fat 1@54, Rump Fat 1@71.
- Adjusted Ultrasound Scan Data: %IMF 4.09, Ratio 101, REA 10.8, Ratio 109, Rib Fat .07, Ratio 54, Rump Fat .10, Ratio 71.
- He ranks in the top 4% for Docility EPD and the top 10% for Calving Ease Maternal among non-parent bulls in the breed.
- **Recommended for larger heifers and cows.**

Watch & bid online for FREE at conoveronlinesales.com

powered by DVAAuction



It's NEW...

It's EXCITING...

It's **CONOVERONLINE SALES.COM**

Buying online is as easy as 1, 2, 3...

1. Create a new DVAAuction account at www.conoveronlinesales.com
2. Apply for bidding approval by clicking on the "details" tab at least 24 hours prior to the auction-a DV representative will notify you once you have been approved
3. Tune in for the sale and make your purchases!

High speed internet is required for successful bidding-be sure to check the lag-time monitor in the top left corner to ensure real-time broadcasts.

Proxy Bidding-if you can't make time to watch the sale, register a proxy bid and let our system represent your bid while you're away. Look for the "proxy bid" tab on the auction listing, and fill in your maximum bids. We'll handle the rest!

Having troubles? During the auction, you can type a message to the operator at any time for assistance. Our full-time support team can also always be reached at (402) 474-5557.



DVA Rep. Justin Dikoff (605) 290-0635 - email: jdikoff@dvauction.com
Please feel free to contact me with questions about the sale or to view the cattle for you.

Peckenpaugh Angus Two Year Old Bulls



Pecks 255 Ranger 867

Lot 29

**Range adapted,
age advantaged
and appropriately
conditioned**

29 Pecks 255 Ranger 867

Born: 03/18/18	19573112	Tattoo: 867	Bull
Jindra Double Vision #*	Connealy Reflection #		
Jindra Double Vision J 342	Hoff Rachel 8312 405 +		
18380903 Jindra Rosella J 151 342	Connealy Guinness #*		
	Jindra Rosella J 825 151		
	B A Gunsmoke Y014		
	Pride of P A F 724		
	Pecks VRD Blackcap 6209		
	Ms Pecks VRD TC Flash 5226		
Pecks Gunsmoke Pride 7229			
Ms Pecks Pride 3100			
17879834 Ms Pecks Pride 873			



CED	BW	WW	YW	SC	DOC	HP	CEM	Milk
+4	+2.5	+61	+109	+1.27	+16	+10.3	+8	+29
CW	Marb	RE	FAT	\$M	\$W	\$B	\$C	
+50	.38	+40 .34	+10 .34	-.001 .32	+56	+64	+126	+219

- Individual Performance: BW 86 lbs, BWR 100, 205 Wt. 707 lbs, WWR 95, 365 Wt. 987 lbs, YWR 97.
- Dam's Production: NR 2@95, YR 2@97. Calving Interval 3@361 days.
- Adjusted Ultrasound Scan Data: %IMF 3.68, REA 8.7, Rib Fat .15, Rump Fat .16.
- His maternal brother was the \$4500 herd sire choice of Terry Spilde, Highmore SD in the 2018 auction.

30 Pecks Double Vision 870

Born: 03/18/18	19597691	Tattoo: 870	Bull
Connealy Reflection #	Bon View New Design 878 #		
Jindra Double Vision #*	Happy Grill of Conanga 6260		
16748826 Hoff Rachel 8312 405 +	Hoff Limited Edition S C 594 #		
	Hoff Miss Expo S C 4223		
	Connealy Timeline #		
	Energy of Conanga 4851		
	Bon View Bando 504		
	Nichols Pride W26 #		
Connealy Danny Boy #			
Ms Pecks Pride 809 #			
16340694 Pride of P A F 724			



CED	BW	WW	YW	SC	DOC	HP	CEM	Milk
+3	+1.3	+57	+102	+0	+17	+7.4	+7	+19
CW	Marb	RE	FAT	\$M	\$W	\$B	\$C	
+48	.42	+36 .38	+73 .38	-.031 .36	+31	+49	+153	+229

- Individual Performance: BW 86 lbs, 205 Wt. 720 lbs, WWR 96, 365 Wt. 968 lbs, YWR 95.
- Dam's Production: NR 7@102, YR 6@101. REA 5@102, Rib Fat 5@94, Rump Fat 5@79.
- Adjusted Ultrasound Scan Data: %IMF 3.52, REA 9.2, Rib Fat .11, Ratio 85, Rump Fat .09, Ratio 64.
- His Pathfinder dam by Connealy Danny Boy produced a \$4750 son in the 2019 sale to Ryan Olson, Artesian SD, an \$8000 highlight of the 2016 sale selected by Kurt Hoffman, Dell Rapids SD; a 2014 sale feature also chosen by Hoffman at \$4500 and the lead-off Lot 1 bull of the 2013 sale selected by Jeff Hinker, Forestburg SD.
- He recorded the #2 highest \$B value in the sale offering.



Pecks Electrify 7125

\$4750 maternal brother to Lot 30
Selected by Ryan Olson, Artesian SD

**#2 highest \$B
from a Pathfinder
dam**

Peckenpaugh Angus Two Year Old Bulls



Pecks 255 Ranger 887 • Lot 35



Pecks Timeless 426 726
\$6000 maternal brother to Lot 35
Selected by Loren Gehm, De Smet SD



Pecks Sunrise 884
Lot 33

31 Pecks Sunrise 879

Born: 03/21/18	19573113	Tattoo: 879	Bull
MCC Daybreak # Leachman Sunrise A144Z +* 17443461 Tehama Elite Blackbird K620	Boyd New Day 8005 #+ MCC Miss Focus 134 # Larks Canyon 74D4 # T Elite Blackbird Y764 # Hyline Right Time 338 # Hyline Ellen 86 + A A Right Line 235 Roth Rebecca 0145		
Hyline Right Way 781 # Ms Pecks Rebecca 825 16340698 Ms Pecks VRD Rebecca 5233			



CED	BW	WW	YW	SC	DOC	HP	CEM	Milk			
+4	+2.0	+50	+86	+1.02	+10	+12.3	+12	+23			
CW	Marb	RE	FAT	\$M	\$W	\$B	\$C				
+26	.38	+1.0	.34	+4.8	.35	-.007	.32	+60	+49	+92	+179

- Individual Performance: BW 83 lbs, BWR 98, 205 Wt. 746 lbs, WWR 100, 365 Wt. 1024 lbs, YWR 100.
- Dam's Production: NR 3@106, YR 1@100. REA 1@104, Rib Fat 1@85, Rump Fat 1@86.
- Adjusted Ultrasound Scan Data: %IMF 3.09, REA 10.3, Ratio 104, Rib Fat .11, Ratio 85, Rump Fat .12, Ratio 86.
- Sons of Leachman Sunrise A144Z pack a lot of growth punch verified by his progeny ratios for WW 29@103, YW 23@103 and RE 24@103.

33 Pecks Sunrise 884

Born: 03/22/18	19573114	Tattoo: 884	Bull
MCC Daybreak # Leachman Sunrise A144Z +* 17443461 Tehama Elite Blackbird K620	Boyd New Day 8005 #+ MCC Miss Focus 134 # Larks Canyon 74D4 # T Elite Blackbird Y764 # G A R Retail Product # Executa of Conanga 939 # Mr Pecks Flash Rancher 2317 Ms Pecks 365 Traveler 3310		
Connealy Mentor 7374 #* Miss Pecks Blackbird 115 17338223 Ms Pecks Flash 365 5229			



CED	BW	WW	YW	SC	DOC	HP	CEM	Milk			
-1	+1.6	+64	+110	+85	+17	+11.9	+3	+24			
CW	Marb	RE	FAT	\$M	\$W	\$B	\$C				
+52	.37	+2.0	.33	+5.8	.33	-.008	.29	+38	+64	+113	+185

- Individual Performance: BW 80 lbs, BWR 100, 205 Wt. 678 lbs, WWR 103.
- Dam's Production: BR 4@100, NR 4@105, YR 2@98. IMF 2@105, REA 2@107, Rib Fat 2@95, Rump Fat 2@93.
- His maternal sister posted individual performance of BWR 94 and WWR 111 and was systematically retained in the herd. His maternal brother is an alumnus of the 2017 sale, selling to David Wrolson, Farwell MN.
- He posted the #4 highest YW EPD in the sale offering ranking in the top 25% or better for both WW and YW among non-parent bulls.

32 Pecks Timeless 882

Born: 03/22/18	*19595003	Tattoo: 882	Bull
WMR Timeless 458 # Montana Timeless 426 SF * 17882038 SF Barbara 033	Leachman Right Time 338-5605 #+ WMR Blackcap 521 S A V Final Answer 0035 #* SF Barbara 819 #+ Sinclair Net Present Value #+* Sinclair Queen M 05A3 1Z13 Busasmus Regulator X45 Ms Pecks GT Gunsmoke 4326		
Sinclair Added Value 6PV31 Ms Pecks Blackbird Queen 972 19075129 Ms Pecks Blackbird Queen7260			



CED	BW	WW	YW	SC	DOC	HP	CEM	Milk			
+4	+1.7	+44	+71	+23	+32	+10.6	+7	+32			
CW	Marb	RE	FAT	\$M	\$W	\$B	\$C				
+31	.37	+7.6	.33	+2.1	.33	+0.055	.29	+66	+56	+118	+219

- Individual Performance: BW 84 lbs, BWR 95, 205 Wt. 688 lbs, WWR 89.
- Dam's Production: BR 1@95.
- First bull to be born of a Sinclair Net Present Value granddaughter that already produced three replacements for the Peckenpaugh program.
- He ranks in the top 2% for Docility EPD among non-parent bulls in the breed.

35 Pecks 255 Ranger 887

Born: 03/25/18	19573116	Tattoo: 887	Bull
Jindra Double Vision #* Jindra Double Vision J 342 18380903 Jindra Rosella J 151 342	Connealy Reflection # Hoff Rachel 8312 405 + Connealy Guinness #* Jindra Rosella J 825 151 SydGen C C & 7 #* Miss Blackcap Ellston F500 # KMD Alliance 780 Sik's Fame 7981		
Hoover CC & 7 H421 * Miss Pecks Rita 339 18432243 Ms Pecks Rita 0130			



CED	BW	WW	YW	SC	DOC	HP	CEM	Milk			
+3	+9	+54	+96	+84	+24	+10.1	+12	+24			
CW	Marb	RE	FAT	\$M	\$W	\$B	\$C				
+24	.37	+1.8	.33	+2.7	.33	+0.015	.31	+39	+53	+93	+160

- Individual Performance: BW 86 lbs, BWR 100, 205 Wt. 738 lbs, WWR 99, 365 Wt. 1053 lbs, YWR 103.
- Dam's Production: NR 3@96, YR 3@99. Calving Interval 4@361 days.
- Adjusted Ultrasound Scan Data: %IMF 3.4, REA 9.7, Rib Fat .17, Rump Fat .15.
- His maternal brothers include the \$6000 selection of Loren Gehm, De Smet SD in 2019 and the herd sire choice of Jordan Meyer, Cavour SD in 2017.

Peckenpaugh Angus Two Year Old Bulls



36 Pecks Timeless 891

Born: 03/27/18 19573117 Tattoo: 891 Bull

WMR Timeless 458 #
Montana Timeless 426 SF *
 17882038 SF Barbara 033

Leachman Sunrise A144Z +*
Ms Pecks Blackbird Queen 479
 18678585 Ms Pecks Blackbird Queen 174

Leachman Right Time 338-5605 #+
 WMR Blackcap 521
 S A V Final Answer 0035 #*
 SF Barbara 819 #+
 MCC Daybreak #
 Tehama Elite Blackbird K620
 Pecks Rightway Fame 7227
 Ms Pecks Blackbird Queen 827



CED	BW	WW	YW	SC	DOC	HP	CEM	Milk
+6	+1.7	+48	+82	+75	+17	+10.5	+8	+22
CW	Marb	RE	FAT	\$M	\$W	\$B	\$C	
+33	.39	+53 .35	+39 .35	+016 .33	+55	+46	+120	+211

- Individual Performance: BW 82 lbs, BWR 97, 205 Wt. 789 lbs, WWR 106.
- Dam's Production: BR 2@93, NR 2@97. REA 1@109, Rump Fat 1@100.
- Adjusted Ultrasound Scan Data: %IMF 4, REA 10.8, Ratio 109, Rib Fat .21, Rump Fat .14, Ratio 100.
- Craig Schnabel, Tripp SD chose his maternal brother to lead his breeding program in 2018 at \$6500.

Pecks 340 602

\$6500 maternal brother to Lot 36
 Selected by Craig Schnabel, Tripp SD



Montana Timeless 426SF
 Featuring 13 sons of this valued herd sire.

37 Pecks Upward 893 [DDC]

Born: 03/29/18 *19573118 Tattoo: 893 Bull

Sitz Upward 307R #
Montana Upward 533 SF *
 18191275 SF Miss 3437 +*

CAV Brilliance 618-2618
Ms Pecks Stats 472
 19153443 Miss Pecks New Design 107

Connealy Onward #*
 Sitz Henrietta Pride 81M
 Connealy Consensus 7229 #*
 SF Miss 975 +*
 S A V Brilliance 8077 #*
 Gannon Lassie F618
 G A R New Design 5050 #+
 Ms Pecks Regulator Flash6241



CED	BW	WW	YW	SC	DOC	HP	CEM	Milk
+12	-1.9	+55	+95	-15	+17	+12.8	+11	+31
CW	Marb	RE	FAT	\$M	\$W	\$B	\$C	
+46	.39	+13 .35	+74 .35	+036 .33	+68	+72	+121	+225

- Individual Performance: BW 78 lbs, BWR 92, 205 Wt. 779 lbs, WWR 104, 365 Wt. 1137 lbs, YWR 111.
- Dam's Production: BR 2@93, NR 2@104, YR 2@107. IMF 1@105, REA 1@116. Calving Interval 2@369 days.
- Adjusted Ultrasound Scan Data: %IMF 4.26, Ratio 105, REA 11.5, Ratio 116, Rib Fat .14, Rump Fat .17.
- His maternal brother was the \$4500 herd sire selection of Duane Harvey, Ree Heights SD in 2019.
- He recorded the #4 heaviest adj yearling wt and shares the #1 largest ultrasound ribeye area in the sale offering. In addition, He is the #1 highest CED EPD, #2 lowest BW EPD and the #3 highest \$W value.
- **Recommended for heifers or cows.**



Pecks Upward 893

Lot 37

**#1 for Calving Ease
 and
 #1 for Ribeye Area**

Peckenpaugh Angus Two Year Old Bulls



Pecks Timeless 896

Lot 38



Pecks Timeless 426 614
\$7500 maternal brother to Lot 41
Selected by Peckenpaugh Ranch

38 Pecks Timeless 896

Born: 03/28/18	19573119	Tattoo: 896	Bull
WMR Timeless 458 # Montana Timeless 426 SF * 17882038 SF Barbara 033	Leachman Right Time 338-5605 #+ WMR Blackcap 521 S A V Final Answer 0035 #* SF Barbara 819 #+ Leachman Boom Time # TC Boom Time 434 Ms Pecks Pride 084 17429998 Ms Pecks Rightline Pride6258	ANGUS GS Powered by Nogen GenCook	

CED	BW	WW	YW	SC	DOC	HP	CEM	Milk			
+7	+2.5	+53	+80	+1.01	+21	+9.4	+13	+23			
CW	Marb	RE	FAT	\$M	\$W	\$B	\$C				
+33	.37	+.09	.33	+.44	.34	+.014	.31	+78	+57	+103	+212

- Individual Performance: BW 84 lbs, BWR 98, 205 Wt. 791 lbs, WWR 106, 365 Wt. 994 lbs, YWR 97.
- Dam's Production: BR 3@99, NR 3@97, YR 2@99. REA 2@104, Rump Fat 2@63.
- Adjusted Ultrasound Scan Data: %IMF 2.84, REA 10.2, Ratio 103, Rib Fat .14, Rump Fat .06, Ratio 43.
- His maternal brother was chosen by Terry Spilde, Highmore SD from the 2016 sale offering at \$4500.
- He posted the #4 highest \$M value in the sale offering.
- **Recommended for heifers or cows.**

40 Pecks Timeless 899

Born: 03/31/18	19573120	Tattoo: 899	Bull
WMR Timeless 458 # Montana Timeless 426 SF * 17882038 SF Barbara 033	Leachman Right Time 338-5605 #+ WMR Blackcap 521 S A V Final Answer 0035 #* SF Barbara 819 #+ MCC Daybreak # Tehama Elite Blackbird K620 Pecks Rightway Fame 7227 Ms Pecks GS Pride 848	ANGUS GS Powered by Nogen GenCook	

CED	BW	WW	YW	SC	DOC	HP	CEM	Milk			
+9	+2.0	+51	+83	-.03	+20	+12.0	+9	+26			
CW	Marb	RE	FAT	\$M	\$W	\$B	\$C				
+33	.37	+.42	.34	+.62	.34	+.015	.31	+71	+57	+114	+219

- Individual Performance: BW 86 lbs, 205 Wt. 696 lbs, WWR 93, 365 Wt. 992 lbs, YWR 97.
- Dam's Production: YR 1@97. IMF 1@107, REA 1@104, Rump Fat 1@86. Calving Interval 3@355 days.
- Adjusted Ultrasound Scan Data: %IMF 4.35, Ratio 107, REA 10.3, Ratio 104, Rib Fat .14, Rump Fat .12, Ratio 86.
- He was a standout on ultrasound day posting an IMF ratio 107, RE ratio 104 and Rump Fat ratio 86.
- **Recommended for larger heifers and cows.**

39 Pecks Renegade 898

Born: 03/30/18	Commercial	Tattoo: 898	Bull
R B Tour of Duty 177 +* KAF Renegade 534-308 18501714 KAF Rosanna 308-924	Werner War Party 2417 #+* B A Lady 6807 305 +* S A V First Class 0207 * KAF Rosanna 924-11A + LT 698 Bando 9074 # KMD Lass 684 + B 13 Structure # KMD Governess 1014	ANGUS GS Powered by Nogen GenCook	

Sire's EPDs														
CED	BW	WW	YW	SC	DOC	HP	CEM	Milk	CW	MB	RE	FAT	\$W	\$B
+6	+3.4	+62	+116	+1.06	+8	+9.4	+12	+38	+59	+4.3	+.75	-.063	+37	+149
Dam's EPDs														
CED	BW	WW	YW	SC	DOC	HP	CEM	Milk	CW	MB	RE	FAT	\$W	\$B
+5	+1.2	+35	+72	+.84	+13	+6.1	+8	+30	+27	+.56	+.25	-.028	+40	+130

- Individual Performance: BW 88 lbs, 205 Wt. 680 lbs, 365 Wt. 1130 lbs.
- Dam's Production: BR 4@99, NR 4@102, YR 3@103.

41 Pecks 255 Ranger 8101

Born: 03/30/18	19573121	Tattoo: 8101	Bull
Jindra Double Vision #* Jindra Double Vision J 342 18380903 Jindra Rosella J 151 342	Connealy Reflection # Hoff Rachel 8312 405 + Connealy Guinness #* Jindra Rosella J 825 151 SydGen C C & 7 #* Miss Blackcap Ellston F500 # Connealy E161 2520 + Sik Angel 1026913 #	ANGUS GS Powered by Nogen GenCook	

CED	BW	WW	YW	SC	DOC	HP	CEM	Milk			
+7	+.1	+44	+83	+.67	+18	+9.7	+9	+34			
CW	Marb	RE	FAT	\$M	\$W	\$B	\$C				
+26	.37	+.49	.33	+.28	.34	+.010	.31	+42	+55	+108	+182

- Individual Performance: BW 85 lbs, BWR 99, 205 Wt. 727 lbs, WWR 97, 365 Wt. 1042 lbs, YWR 102.
- Dam's Production: NR 2@98, YR 2@104. REA 2@100.
- Adjusted Ultrasound Scan Data: %IMF 4.01, REA 9.2, Rib Fat .16, Rump Fat .19.
- His maternal brother was chosen by Peckenpaugh Ranch as the \$7500 co-top selling bull of the 2018 sale.
- **Recommended for larger heifers and cows.**

Peckenpaugh Angus Two Year Old Bulls



Pecks Electrify 8104

Lot 42



Pecks Sunrise 8108

Lot 44

42 Pecks Electrify 8104

Born: 04/01/18 **19573122** **Tattoo: 8104** **Bull**

Hoover Electrify
Hoover Electrify M34
17603593 Elbamere Queen Ellston J10

TC Aberdeen 759 #
Ms Pecks Bella 220
17390125 Ms Pecks Gunsmoke Stats 6216

Basin Excitement #*
Blkcp Empress Ellston D241
SydGen C C & 7 #*
Elbamere Queen S36 #
C R A Bextor 872 5205 608 #
TC Blackbird 4034 #+
B A Gunsmoke Y014
Roth Miss Stats 0188



CED	BW	WW	YW	SC	DOC	HP	CEM	Milk
+6	+4	+53	+102	+84	+24	+15.0	+9	+26
CW	Marb	RE	FAT	\$M	\$W	\$B	\$C	
+44	.38	+28 .35	+83 .35	-.005 .32	+55	+53	+135 +230	

- Individual Performance: BW 86 lbs, BWR 100, 205 Wt. 768 lbs, WWR 103, 365 Wt. 1040 lbs, YWR 102.
- Dam's Production: BR 2@97, NR 2@102, YR 2@101. IMF 2@100, REA 2@106, Rib Fat 2@85, Rump Fat 2@100.
- Adjusted Ultrasound Scan Data: %IMF 4.07, Ratio 100, REA 11.1, Ratio 112, Rib Fat .09, Ratio 69, Rump Fat .14, Ratio 100.
- His dam combined individual performance of WWR 103, IMF ratio 106, RE ratio 113 and Rib Fat ratio 100 to earn her invitation to the Peckenpaugh breeding program.
- His maternal brother was the herd sire selection of Bob and Nancy Banks, Fedora SD from the 2019 auction.
- **Recommended for larger heifers and cows.**

43 Pecks Timeless 8106

Born: 04/01/18 **19573123** **Tattoo: 8106** **Bull**

WMR Timeless 458 #
Montana Timeless 426 SF *
17882038 SF Barbara 033

Hoover CC&7 H421 #
Ms Pecks Rebecca 314
17879826 Ms Pecks Rebecca 835

Leachman Right Time 338-5605 #+
WMR Blackcap 521
S A V Final Answer 0035 #*
SF Barbara 819 #+
SydGen C C & 7 #*
Miss Blackcap Ellston F500 #
Sinclair Added Value 6PV31
Ms Pecks Stats Flash 2309



CED	BW	WW	YW	SC	DOC	HP	CEM	Milk
+9	-.5	+43	+63	+1.15	+31	+13.0	+10	+31
CW	Marb	RE	FAT	\$M	\$W	\$B	\$C	
+15	.38	+45 .34	+46 .35	+0.16 .32	+83	+64	+81 +188	

- Individual Performance: BW 80 lbs, BWR 93, 205 Wt. 752 lbs, WWR 101, 365 Wt. 973 lbs, YWR 96.
- Dam's Production: BR 1@93, NR 1@101, YR 1@96. IMF 1@108, Rib Fat 1@92, Rump Fat 1@50.
- Adjusted Ultrasound Scan Data: %IMF 4.39, Ratio 108, REA 9.3, Rib Fat .12, Ratio 92, Rump Fat .07, Ratio 50.
- He is the #1 highest \$M bull in the offering and enjoys a Docility EPD in the top 3% of the breed.
- **Recommended for heifers or cows.**

44 Pecks Sunrise 8108

Born: 04/03/18 **19573124** **Tattoo: 8108** **Bull**

MCC Daybreak #
Leachman Sunrise A144Z +*
17443461 Tehama Elite Blackbird K620

Pecks Gunsmoke Pride 7229
Ms Pecks Rita 3147
18762926 Sik Rita 79818

Boyd New Day 8005 #+
MCC Miss Focus 134 #
Larks Canyon 74D4 #
T Elite Blackbird Y764 #
B A Gunsmoke Y014
Pride of P A F 724
Connealy Freightliner #
Sik's Fame 7981



CED	BW	WW	YW	SC	DOC	HP	CEM	Milk
+5	+1.8	+59	+104	+1.59	+16	+11.0	+11	+22
CW	Marb	RE	FAT	\$M	\$W	\$B	\$C	
+47	.37	+35 .33	+62 .34	-.011 .31	+41	+53	+134 +215	

- Individual Performance: BW 88 lbs, 205 Wt. 684 lbs, WWR 92, 365 Wt. 1033 lbs, YWR 102.
- Dam's Production: BR 3@99, YR 3@99. IMF 2@104, REA 2@102, Rib Fat 2@83, Rump Fat 2@63. Calving Interval 3@367 days.
- Adjusted Ultrasound Scan Data: %IMF 2.96, REA 100, Ratio 101, Rib Fat .09, Ratio 69, Rump Fat .10, Ratio 71.
- Maternal grandsire, Pecks Gunsmoke Pride 7229 saw only limited use but still left five daughters in the herd and a progeny legacy of YR 7@105 and IMF 4@113.

46 Pecks Electrify 8126

Born: 04/07/18 **19573126** **Tattoo: 8126** **Bull**

Hoover Electrify
Hoover Electrify M34
17603593 Elbamere Queen Ellston J10

Pecks VRD 967
Ms Pecks BlackbirdQueen 3110
19401570 Ms Pecks Blackbird Queen 972

Basin Excitement #*
Blkcp Empress Ellston D241
SydGen C C & 7 #*
Elbamere Queen S36 #
Vermilion Dateline 7078 #
Sik Blueblood Lady 37376
Sinclair Added Value 6PV31
Ms Pecks Blackbird Queen 7260



CED	BW	WW	YW	SC	DOC	HP	CEM	Milk
+3	+2.4	+58	+104	+1.43	+27	+12.4	+5	+17
CW	Marb	RE	FAT	\$M	\$W	\$B	\$C	
+37	.36	+51 .32	+44 .32	-.021 .30	+47	+44	+143 +232	

- Individual Performance: BW 86 lbs, BWR 100, 205 Wt. 762 lbs, WWR 102, 365 Wt. 1061 lbs, YWR 104.
- Dam's Production: BR 1@100, NR 1@102, YR 1@104. REA 1@109, Rib Fat 1@92, Rump Fat 1@71.
- Adjusted Ultrasound Scan Data: %IMF 3.86, REA 10.8, Ratio 109, Rib Fat .12, Ratio 92, Rump Fat .10, Ratio 71.
- He excels at two of the most important, but often overlooked traits: fertility and docility. He posts EPDs in the top 15% for SC and top 10% for Doc.

Peckenpaugh Angus Two Year Old Bulls



Pecks Upward 8131

Lot 48



Pecks H421 3117

\$6500 maternal brother to Lot 47
Selected by Peckenpaugh Ranch, SD

47 Pecks 255 Ranger 8127

Born: 04/07/18 19573127 Tattoo: 8127 Bull
 Jindra Double Vision #*
Jindra Double Vision J 342
 18380903 Jindra Rosella J 151 342
 G A R Exaltation 3144 #+
Ms Pecks Pride 013
 16861647 Pride of P A F 724
 Connealy Reflection #
 Hoff Rachel 8312 405 +
 Connealy Guinness #*
 Jindra Rosella J 825 151
 N Bar Emulation EXT #*
 G A R Scotch Cap 309 +
 Bon View Bando 504
 Nichols Pride W26 #



CEW	BW	WW	YW	SC	DOC	HP	CEM	Milk			
+42	.37	+74	.33	+20	.34	+050	.31	+22	+46	+134	+196

- Individual Performance: BW 93 lbs, 205 Wt. 778 lbs, WWR 104, 365 Wt. 1053 lbs, YWR 103.
- Dam's Production: NR 4@104, YR 4@102. IMF 4@113. Calving Interval 6@365 days.
- Adjusted Ultrasound Scan Data: %IMF 5.23, Ratio 129, REA 9.2, Rib Fat .17, Rump Fat .18.
- He boasts the #3 highest \$B value in the sale offering.
- Maternal brothers include two selections of Peckenpaugh Ranch, Carthage SD in 2017 and 2015 at \$4250 and \$6500 respectively.
- He recorded the #1 highest IMF measurement in the sale offering.

49 Pecks Upward 8138

Born: 04/10/18 19573129 Tattoo: 8138 Bull
 Sitz Upward 307R #
Montana Upward 533 SF *
 18191275 SF Miss 3437 +*
 CAV Brilliance 618-2618
Ms Pecks Lady 466
 19096487 Ms Pecks Lady 116
 Connealy Onward #*
 Sitz Henrietta Pride 81M
 Connealy Consensus 7229 #*
 SF Miss 975 +*
 S A V Brilliance 8077 #*
 Gannon Lassie F618
 S A V Net Worth 4200 #
 Ms Pecks Lady 807 #



CEW	BW	WW	YW	SC	DOC	HP	CEM	Milk			
+39	.38	+71	.34	+48	.34	+048	.32	+79	+60	+144	+266

- Individual Performance: BW 84 lbs, BWR 99, 205 Wt. 758 lbs, WWR 101, 365 Wt. 968 lbs, YWR 95.
- Dam's Production: NR 2@97, YR 2@95. IMF 2@121, Rib Fat 2@78, Rump Fat 2@88. Calving Interval 2@360 days.
- Adjusted Ultrasound Scan Data: %IMF 5.17, Ratio 128, REA 8.6, Rib Fat .10, Ratio 77, Rump Fat .11, Ratio 79.
- His dam also produced the \$4750 herd sire selection of Neal Olson, Artesian SD in 2019.
- He shares the #2 highest IMF measurement in the sale offering as well as the #1 lowest BW EPD, the #1 highest \$C value and the #2 \$M value.
- **Recommended for heifers or cows.**

48 Pecks Upward 8131

Born: 04/08/18 19573128 Tattoo: 8131 Bull
 Sitz Upward 307R #
Montana Upward 533 SF *
 18191275 SF Miss 3437 +*
 Hoover CC&7 H421 *
Ms Pecks Lass 467
 18678581 KMD 555 Lass 7118
 Connealy Onward #*
 Sitz Henrietta Pride 81M
 Connealy Consensus 7229 #*
 SF Miss 975 +*
 SydGen C C & 7 #*
 Miss Blackcap Ellston F500 #
 TC Foreman 555
 KMD 41-93 Bushwacker 481



CEW	BW	WW	YW	SC	DOC	HP	CEM	Milk			
+45	.40	+39	.36	+62	.36	+013	.34	+53	+72	+140	+235

- Individual Performance: BW 87 lbs, 205 Wt. 719 lbs, WWR 96, 365 Wt. 962 lbs, YWR 94.
- Dam's Production: BR 2@99, NR 2@99, YR 2@96. Calving Interval 2@365 days.
- Adjusted Ultrasound Scan Data: %IMF 4.13, Ratio 102, REA 8.3, Rib Fat .11, Ratio 85, Rump Fat .17.
- Sons of Montana Upward enjoy excellent carcass attributes verified by progeny ratios of IMF 13@109, RE 13@102, Rib Fat 13@95 and Rump Fat 13@98.
- He recorded the #2 highest \$W value in the sale offering.



Peckenpaugh Angus Two Year Old Bulls



Pecks Timeless 8150 • Lot 52



Ponca Creek Pepper
Sire of Lot 50



Pecks Pepper 8141
Lot 50

50 Pecks Pepper 8141

Born:	19575219	Tattoo:	8141	Bull
A A R Ten X 7008 S A **		Mytty In Focus #*		
Ponca Creek Pepper *		A A R Lady Kelton 5551 #		
17417464 Ponca Creek Blackbird 955 #		Connealy All Around #*		
Montana Timeless 426 SF *		WMR Timeless 458 #		
Ms Pecks Elbance 688		SF Barbara 033		
19340027 Miss Pecks Elbance 329		Hoover CC&7 H421 *		
		Sik Elbance 23036		



CED	BW	WW	YW	SC	DOC	HP	CEM	Milk			
-10	+6.6	+76	+129	+55	+25	+12.4	+4	+28			
CW	Marb	RE	FAT	\$M	\$W	\$B	\$C				
+63	.41	+.71	.37	+.41	.37	+.019	.35	+.47	+63	+159	+253

- Individual Performance: BW 89 lbs, 205 Wt. 877 lbs, WWR 117, 365 Wt. 1178 lbs, YWR 115.
- Dam's Production: NR 1@117, YR 1@115. IMF 1@110, REA 1@103, Rump Fat 1@79.
- Adjusted Ultrasound Scan Data: %IMF 4.44, Ratio 110, REA 10.2, Ratio 103, Rib Fat .14, Rump Fat .11, Ratio 79.
- Born unassisted out of a first-calf heifer, this performance over-achiever is sired by Ponca Creek Pepper, a Cottonwood Angus herdsire featured on the ORigen roster that is a performance and carcass trait standout backed by three generations of Pathfinder dams. He posts 9 traits in the top 25% of the Angus breed.
- He posted the #2 heaviest adj weaning and yearling weights; the #1 WW and YW EPDs and the #1 \$B value in the sale offering.

51 Pecks Electrify 8148

Born:	19573130	Tattoo:	8148	Bull
Hoover Electrify		Basin Excitement #*		
Hoover Electrify M34		Blkcp Empress Ellston D241		
17603593 Elbamere Queen Ellston J10		SydGen C C & 7 #*		
Pecks Rightway Fame 7227		Elbamere Queen S36 #		
Ms Pecks Blackbird Queen 174		Hyline Right Way 781 #		
18086117 Ms Pecks Blackbird Queen 827		Ms Pecks EXT Fame 3312		
		Hyline Right Way 781 #		
		Ms Pecks GT Gunsmoke 4326		



CED	BW	WW	YW	SC	DOC	HP	CEM	Milk			
-7	+4.0	+53	+87	+1.24	+14	+11.8	-4	+26			
CW	Marb	RE	FAT	\$M	\$W	\$B	\$C				
+30	.37	+.34	.33	+.34	.34	-.021	.31	+.37	+49	+111	+181

- Individual Performance: BW 100 lbs, 205 Wt. 837 lbs, WWR 112, 365 Wt. 1106 lbs, YWR 108.
- Dam's Production: NR 3@103, YR 3@101. IMF 3@111, Rib Fat 3@96, Rump Fat 3@78. Calving Interval 5@368 days.
- Adjusted Ultrasound Scan Data: %IMF 4.86, Ratio 120, REA 10.1, Ratio 102, Rib Fat .17, Rump Fat .08, Ratio 57.
- His maternal brother was the herd sire selection of John Karlen, Howard SD in 2017.
- Take note of his 837 lbs of pre-weaning growth.

52 Pecks Timeless 8150

Born:	19573131	Tattoo:	8150	Bull
WMR Timeless 458 #		Leachman Right Time 338-5605 #+		
Montana Timeless 426 SF *		WMR Blackcap 521		
17882038 SF Barbara 033		S A V Final Answer 0035 #*		
Hoover CC&7 H421 *		SF Barbara 819 #+		
Ms Pecks Elbance 590		SydGen C C & 7 #*		
18679816 Sik Elbance 230368		Miss Blackcap Ellston F500 #		
		MOGCK Whispering Wind 346		
		Sik Elbance 23036		



CED	BW	WW	YW	SC	DOC	HP	CEM	Milk			
+10	+1.3	+46	+79	+79	+27	+10.5	+7	+41			
CW	Marb	RE	FAT	\$M	\$W	\$B	\$C				
+24	.39	+.57	.35	+.31	.35	+.031	.33	+62	+65	+95	+185

- Individual Performance: BW 83 lbs, BWR 100, 205 Wt. 803 lbs, WWR 107, 365 Wt. 1086 lbs, YWR 106.
- Dam's Production: BR 1@100, NR 1@107, YR 1@106. IMF 1@115, Rib Fat 1@92.
- Adjusted Ultrasound Scan Data: %IMF 4.64, Ratio 115, REA 8.9, Rib Fat .12, Ratio 92, Rump Fat .15.
- He ranks #1 in the sale offering for Milk EPD as well as the top 1% of the breed. Furthermore, he boasts a CED EPD in the top 20% and Doc EPD in the top 10%.
- **Recommended for heifers or cows.**

53 Pecks 221 Ponca 8158

Born:	19573132	Tattoo:	8158	Bull
Jindra Double Vision #*		Connealy Reflection #		
Ponca Crk Double Vision 221		Hoff Rachel 8312 405 +		
18116624 Ponca Creek Blackbird 221 #		A A R Ten X 7008 S A #*		
Hoover CC&7 H421 *		Ponca Creek Blackbird 959 #		
Ms Pecks Pride 620		SydGen C C & 7 #*		
19340028 Ms Pecks 6PV31 Pride 939		Miss Blackcap Ellston F500 #		
		Sinclair Added Value 6PV31		
		Ms Pecks Regulator Pride7233		



CED	BW	WW	YW	SC	DOC	HP	CEM	Milk			
+8	+.8	+61	+105	+.58	+26	+12.3	+11	+24			
CW	Marb	RE	FAT	\$M	\$W	\$B	\$C				
+46	.41	+.28	.37	+.52	.37	+.020	.34	+58	+64	+136	+234

- Individual Performance: BW 79 lbs, BWR 100, 205 Wt. 809 lbs, WWR 108, 365 Wt. 1059 lbs, YWR 104.
- Dam's Production: BR 1@100, NR 1@108, YR 1@104. IMF 1@124, REA 1@100, Rib Fat 1@100.
- Adjusted Ultrasound Scan Data: %IMF 5.02, Ratio 124, REA 9.9, Ratio 100, Rib Fat .13, Ratio 100, Rump Fat .16.
- Born unassisted from a first-calf heifer and demonstrated outstanding individual performance and ultrasound measures.
- He posted the #4 highest IMF measurement in the sale offering.
- **Recommended for heifers or cows.**

Peckenpaugh Angus Two Year Old Bulls



54 Pecks Sunrise 8159

Born: 04/19/18 19573133 Tattoo: 8159 Bull

MCC Daybreak #
Leachman Sunrise A144Z +*
 17443461 Tehama Elite Blackbird K620

B A Gunsmoke Y014
Ms Pecks Blackbird Queen 866
 16265160 Dahls Blackbird Queen 148

Boyd New Day 8005 #+
 MCC Miss Focus 134 #
 Larks Canyon 74D4 #
 T Elite Blackbird Y764 #
 WK Gunsmoke #
 Hi Sky Velvet Touch
 Whitestone General Max F202 +
 Blackbird Queen 308 D A F



CED	BW	WW	YW	SC	DOC	HP	CEM	Milk
+5	+1.5	+65	+101	+49	+7	+15.0	+9	+12
CW	Marb	RE	FAT	\$M	\$W	\$B	\$C	
+42	.39	+.41 .35	+.45 .35	+.002 .32	+56	+54	+109	+197

- Individual Performance: BW 90 lbs, 205 Wt. 848 lbs, WWR 114, 365 Wt. 1141 lbs, YWR 112.
- Dam's Production: NR 5@102, YR 2@105. REA 4@104.
- Adjusted Ultrasound Scan Data: %IMF 4.13, Ratio 102, REA 11.5, Ratio 116, Rib Fat .12, Ratio 92, Rump Fat .13, Ratio 93.
- His maternal brother was the \$6500 herd sire selection of Steven Neuharth, Wolsey SD in 2016.
- This high-performance bull recorded the #5 heaviest adj weaning wt, the #3 heaviest yearling wt and shares the #1 largest ribeye area in the sale offering.

Pecks H421 406

\$6500 maternal brother to Lot 54
 Selected by Steven Neuharth, Wolsey SD



KCF Bennett Citation

\$235,000 sire of lot 55

55 Pecks Citation 8162

Born: 04/10/18 19595005 Tattoo: 8162 Bull

K C F Bennett Consent Y75 +*
K C F Bennett Citation *
 18476755 Thomas Patricia 9705 *

Mra Windy 3032
Ms Pecks Blackbird Queen 6119
 19536756 Ms Pecks Blackbird Queen 174

Connealy Consensus #*
 K C F Miss Protege W148 +
 S S Objective T510 0T26 #*
 Thomas Patricia 71138 +
 Apex Windy 078 #*
 MR Miss Pride 7214
 Pecks Rightway Fame 7227
 Ms Pecks Blackbird Queen 827



CED	BW	WW	YW	SC	DOC	HP	CEM	Milk
+4	+1.9	+46	+83	+64	+2	+7.2	+2	+23
CW	Marb	RE	FAT	\$M	\$W	\$B	\$C	
+29	.39	+.94 .35	+.33 .35	+.005 .31	+34	+44	+132	+205

- Individual Performance: BW 84 lbs, 205 Wt. 811 lbs, WWR 105.
- Dam's Production: NR 1@105.
- Born unassisted from a first-calf heifer.
- His sire, KCF Bennett Citation is a \$235,000 Select Sires and 44 Farms feature that gained national attention as the top seller in the 2016 Fall Knoll Crest Farm Bull Sale. Today he is a proven calving ease sire with exquisite carcass credentials.
- The #1 highest MB EPD in the sale offering.

GUARANTEE

All bulls selling for \$3,000 or more are guaranteed against breeding injury for the first breeding season. Breeding season is defined as the 90-day period following the first turnout of the bulls.

If a replacement bull is available, he will be provided. Or, if the buyer prefers, credit toward one bull will be given in the following year's sale, less salvage value of the injured bull. Please notify us as soon as possible should injury occur and prior to the injured bull being sold for salvage.

BULL WINTERING PROGRAM

Peckenpaugh Angus will offer FREE bull wintering until April 1, 2020. Buyer will be required to purchase a minimum of 90 days mortality insurance at a rate of 4% of the purchase price. Additional wintering fees of \$3.00 per day will be assessed after April 1st.

If you choose to take your bull home sale day, you will receive \$50 off your purchase price.

Peckenpaugh Angus Two Year Old Bulls



Pecks Upward 8173 • Lot 56

**#1 Heaviest Adj 365-Day Wt,
Shares the #1 Largest Ribeye
Area and Posts the #1
Highest \$W Value**

**Deer Valley
Primrose 2260**

Grandam of Lot 56



56 Pecks Upward 8173

Born: 04/23/18 19573134 Tattoo: 8173 Bull

Sitz Upward 307R #
Montana Upward 533 SF *
18191275 SF Miss 3437 +*

Vin-Mar O'Reilly Factor #
Ms Pecks Primrose 5103
19077315 Deer Valley Primrose 2260

Connealy Onward #*
Sitz Henrietta Pride 81M
Connealy Consensus 7229 #*
SF Miss 975 +*
S A V Final Answer 0035 #*
Vin-Mar Edella 2827 #
Plattermere Weigh Up K360 #*
Deer Valley Primrose 9289 +



CED	BW	WW	YW	SC	DOC	HP	CEM	Milk			
+11	-1.0	+64	+116	+85	+17	+15.1	+10	+35			
CW	Marb	RE	FAT	\$M	\$W	\$B	\$C				
+48	.40	+42	.36	+81	.36	+0.13	.34	+78	+84	+137	+256

- Individual Performance: BW 82 lbs, BWR 99, 205 Wt. 865 lbs, WWR 116, 365 Wt. 1185 lbs, YWR 116.
- Dam's Production: NR 2@112, YR 2@110. REA 2@114. Calving Interval 2@372 days.
- Adjusted Ultrasound Scan Data: %IMF 4.48, Ratio 111, REA 11.5, Ratio 116, Rib Fat .15, Rump Fat .17.
- His maternal brother was the \$6000 herd sire selection of Amanda Gehm, DeSmet SD from the 2019 sale offering.
- His dam is a daughter of the \$7250 Deer Valley Primrose 2260, an alumnus of the 2013 NWFFS.
- He posted the #4 heaviest adj weaning wt, the #1 heaviest adj yearling wt and shares the #1 largest ribeye area in the sale offering. He also enjoys many of the highest EPDs culminating with the #1 \$W value and the #2 \$C value.
- **Recommended for heifers or cows.**



Pecks New Design 501 7136

\$6000 maternal brother to Lot 56
Selected by Amanda Gehm, DeSmet SD

Peckenpaugh Angus Two Year Old Bulls



Pecks Timeless 426 614

\$7500 co-top selling bull 2018 and paternal half-brother to lot 58



Hoover CC&7 H421

Maternal grandsire of lots 57 and 58

57 Pecks 255 Ranger 8184

Born:	19573135	Tattoo:	8184	Bull
Jindra Double Vision #*		Connealy Reflection #		
Jindra Double Vision J 342		Hoff Rachel 8312 405 +		
18380903 Jindra Rosella J 151 342		Connealy Guinness #*		
		Jindra Rosella J 825 151		
		SydGen C C & 7 #*		
Hoover CC&7 H421 *		Miss Blackcap Ellston F500 #		
Ms Pecks Traveler 414		SydGen Mandate 6079 #		
18678574 Deer Valley Ms Traveler 2129 +		Monarch Miss Traveler 7095 +		



CED	BW	WW	YW	SC	DOC	HP	CEM	Milk	
+4	+2.2	+67	+116	+62	+26	+13.8	+5	+27	
CW	Marb	RE	FAT	\$M	\$W	\$B	\$C		
+55	.37	+35	.33	+62	.31	+45	+66	+146	+234

- Individual Performance: BW 87 lbs, 205 Wt. 867 lbs, WWR 116, 365 Wt. 1126 lbs, YWR 110.
- Dam's Production: NR 1@116, YR 1@110.
- Adjusted Ultrasound Scan Data: %IMF 4.01, REA 9.8, Rib Fat .08, Ratio 62, Rump Fat .15.
- He recorded the #3 heaviest adj weaning wt and the #5 heaviest adj yearling wt, as well as the #2 highest WW and YW EPDs in the sale offering.
- He ranks in the top 20% or better for WW, YW, Doc, HP and CW EPDs.

59 Pecks Ponca Vision 8196

Born:	19595004	Tattoo:	8196	Bull
Jindra Double Vision #*		Connealy Reflection #		
Ponca Crk Double Vision 221		Hoff Rachel 8312 405 +		
18116624 Ponca Creek Blackbird 221 #		A A R Ten X 7008 S A #*		
		Ponca Creek Blackbird 959 #		
		SydGen C C & 7 #*		
Hoover CC&7 H421 *		Miss Blackcap Ellston F500 #		
Ms Pecks Pride 617		B A R Ext Traveler 205 #		
19340029 Ms Pecks Pride 074		Ms Pecks GS Pride 848		

CED	BW	WW	YW	SC	DOC	HP	CEM	Milk
+8	+9	+56	+97	NA	NA	NA	+11	+29
CW	Marb	RE	FAT	\$M	\$W	\$B	\$C	
NA	NA	NA	NA	NA	+54	+61	NA	NA

- Individual Performance: BW 80 lbs, BWR 99, 205 Wt. 828 lbs, WWR 107.
- Dam's Production: BR 1@99, NR 1@107.
- Born unassisted from a first-calf heifer.
- Tremendous individual performance weighing 828 lbs at weaning from a heifer.
- **Recommended for heifers or cows.**

58 Pecks Timeless 8191

Born:	04/28/18	*19577020	Tattoo:	8191	Bull
WMR Timeless 458 #		Leachman Right Time 338-5605 #+			
Montana Timeless 426 SF *		WMR Blackcap 521			
17882038 SF Barbara 033		S A V Final Answer 0035 #*			
		SF Barbara 819 #+			
		MCC Daybreak #			
Leachman Sunrise A144Z +*		Tehama Elite Blackbird K620			
Ms Pecks Rebecca 579		Hyline Right Way 781 #			
18679815 Ms Pecks Rebecca 825		Ms Pecks VRD Rebecca 5233			



CED	BW	WW	YW	SC	DOC	HP	CEM	Milk			
+4	+3.0	+65	+102	+1.19	+26	+14.6	+11	+32			
CW	Marb	RE	FAT	\$M	\$W	\$B	\$C				
+47	.40	-.05	.36	+51	.36	+038	.34	+65	+72	+89	+180

- Individual Performance: BW 89 lbs, 205 Wt. 900 lbs, WWR 120, 365 Wt. 1106 lbs, YWR 108.
- Dam's Production: NR 1@120, YR 1@108.
- Adjusted Ultrasound Scan Data: %IMF 3.13, REA 9.3, Rib Fat .13, Ratio 100, Rump Fat .16.
- He posted a staggering 900 lbs of pre-weaning growth to be the #1 adj weaning wt bull in the offering.
- He ranks in the top 15% or better for WW, Doc, HP, Milk and \$W among non-parent bulls.

Lot 58

#1 Adj WW

Bull in the

Offering @ 900 lbs!

Peckenpaugh Angus Semen

Lot 60 Baldrige Elroy E546

Born: 06/03/17	19109248	Freeze Brand: E546	Bull
G A R Prophet #+*	C R A Bextor 872 5205 608 #		
Baldrige Beast Mode B074 +*	G A R Objective 1885 +		
Baldrige Isabel Y69 *	Styles Upgrade J59 #*		
Ponca Creek Black Eagle 106 *	Baldrige Isabel T935 +		
Baldrige Blackbird Z081 +	Connealy Concrete		
Baldrige Blackbird 34K	T K Queen SRP P89 #		
	Baldrige Bob		
	Baldrige Blackbird 181H		

CED	BW	WW	YW	SC	DOC	HP	CEM	Milk
+13	+4	+73	+133	+7.76	+26	I+8.7	+11	+24
CW	Marb	RE	FAT	\$M	\$W	\$B	\$C	
+53	.24	+74	.20	+78	.24	-.003	.20	+55
								+71
								+157
								+259

60A 10 Units • Refer to Reference Sire H

Stored at 605 Sires, Marion, SD

60B 10 Units • Refer to Reference Sire H

Stored at 605 Sires, Marion, SD

60c 10 Units • Refer to Reference Sire H

Stored at 605 Sires, Marion, SD



Baldrige Beast Mode B074
Sire of Lot 60 semen

Lot 61 SydGen Enhance 8435

Born: 09/04/18	19459869	Tattoo: 8435	Bull
SydGen Exceed 3223 *	SydGen Googol +*		
SydGen Enhance 18170041	SydGen Forever Lady 1255 +*		
SydGen Rita 2618	SydGen Liberty GA 8627 #*		
	Fox Run Rita 9308 #		
	SydGen Trust 6228 #*		
	SydGen Heroine 9808 +		
	Spur Success 2801		
	SydGen Miss Wix 5741 +		

CED	BW	WW	YW	SC	DOC	HP	CEM	Milk
+14	-.9	+70	+127	+1.60	+22	+10.1	+14	+29
CW	Marb	RE	FAT	\$M	\$W	\$B	\$C	
+63	.38	+35	.34	+90	.35	+0	.32	+66
								+81
								+167
								+283



61A 10 Units • Refer to Reference Sire F

Stored at 605 Sires, Marion, SD

61B 10 Units • Refer to Reference Sire F

Stored at 605 Sires, Marion, SD

61c 10 Units • Refer to Reference Sire F

Stored at 605 Sires, Marion, SD



Sydgen Enhance 8435

Lot 62 SydGen Enhance GA 8430

Born: 09/02/18	*19459867	Tattoo: 8430	Bull
SydGen Exceed 3223 *	SydGen Googol +*		
SydGen Enhance 18170041	SydGen Forever Lady 1255 +*		
SydGen Rita 2618	SydGen Liberty GA 8627 #*		
	Fox Run Rita 9308 #		
	SydGen Trust 6228 #*		
	SydGen Heroine 9808 +		
	A A R Ten X 7008 S A #*		
	Tehama Mary Blackbird Z723 #+		

CED	BW	WW	YW	SC	DOC	HP	CEM	Milk
+8	+2.1	+70	+142	+2.02	+32	+10.2	+10	+26
CW	Marb	RE	FAT	\$M	\$W	\$B	\$C	
+73	.38	+66	.35	+1.10	.35	+0.012	.32	+57
								+67
								+207
								+325



62A 10 Units • Refer to Reference Sire G

Stored at 605 Sires, Marion, SD

62B 10 Units • Refer to Reference Sire G

Stored at 605 Sires, Marion, SD

62c 10 Units • Refer to Reference Sire G

Stored at 605 Sires, Marion, SD



Sydgen Enhance GA 8430

Peckenpaugh Angus Semen

Lot

63 Montana Example 7069

Born: 04/01/17 +*18844727 Tattoo: 7069 Bull

Baldrige Waylon W34 *
Baldrige Titan A139 +*
 17821946 Baldrige Forever Lady T269

G A R Progress #+*
Montana Rita B026 +*
 17890136 Riverbend Rita Y606 +*

GAR-EGL Protege #+*
 Baldrige Blackcap T163 *
 Baldrige Rapid R31
 Baldrige Forever Lady P164
 G A R Predestined #*
 G A R Objective 2345 *
 Summitcrest Complete 1P55 #*
 Riverbend Rita S241 +



ANGUS GS
 Powered by Waggon Genetics



Montana Example 7069
 Reference sire I

CED	BW	WW	YW	SC	DOC	HP	CEM	Milk			
+8	+.1	+74	+134	+.41	+17	+14.9	+8	+19			
CW	Marb	RE	FAT	\$M	\$W	\$B	SC				
+51	.40	+1.07	.37	+.55	.37	+.050	.34	+54	+69	+172	+277

63A 10 Units • Refer to Reference Sire I

Stored at 605 Sires, Marion, SD

63B 10 Units • Refer to Reference Sire I

Stored at 605 Sires, Marion, SD

63c 10 Units • Refer to Reference Sire I

Stored at 605 Sires, Marion, SD

Peckenpaugh Angus Three Years Harvest Data

Peckenpaugh's sent 296 steers to Cargill at Schuyler Nebraska the fall of 2017

137 of steers made the Certified Angus Beef program 46.3%
 102 steers went Prime 34.5%
 189 steers went Choice 63.9%
 5 steers went Select 1.6%

Peckenpaugh's sent 252 steers to Cargill at Schuyler Nebraska the fall of 2018

107 of steers made the Certified Angus Beef program 42.5%
 101 steers went Prime 40%
 189 steers went Choice 59.6%
 1 steer went Select 0.4%

- Steers were all born and fed here.
- Steers did not receive any implants.
- Mostly sired Peckenpaugh Angus bulls.
- Steers were all black or baldies.

Peckenpaugh's sent 171 steers to Cargill at Schuyler Nebraska January 2020

171 head shipped January 2020
 82 head qualified for Certified Angus Beef
 CAB qualification rate 48%
 (includes several ineligible red hided)
 35 Prime steers 20.5%
 128 Choice steers 75%
 8 Selects 4.5%
 Ave REA 13.0"



"The national average of cattle that make CAB qualification is less than 1 in 4 Angus influenced cattle harvested at licensed plants and meet all 10 carcass specifications."
 Stated by Certified Angus Beef LLC,

Peckenpaugh ANGUS

