

Deckenpaugh



ANGUS

Annual 2 Year Old

**B
U
L
L
S
A
L
E**

Friday
FEB. 22 2019
1:30 PM
At The Ranch - Carthage, SD



LOT 46



LOT 44



LOT 24



All animals in this sale
have been 50K tested

Peckenpaugh ANGUS



Selling
55 Virgin Two Year Old Bulls

AGI ALL BULLS 50K TESTED
GE-EPD

Annual 2 Year Old **BULLSALE**

Friday
FEB. 22 2019
1:30 PM

At The Ranch - Carthage, SD

SALE DAY PHONES:

TONY PECKENPAUGH (605) 860-0130
BOB PECKENPAUGH (605) 860-1503
(605) 860-8406

CONOVER AUCTION SERVICE CELL PHONES:
515-491-8078 • 515-491-1335

AMERICAN ANGUS ASSOCIATION

Rod Geppert.....605-295-3673

ANGUS BOARD OF DIRECTORS

Mick Varilek.....605-337-2261

LIVESTOCK PRESS REPRESENTATIVES

Cattle Business Weekly.....Jim Scheel (605) 545-1521

Tri State Livestock News.....Chris Effling (605) 769-0142



Auctioneer:
Al Conover
(515) 491-8078

VIEW BULL VIDEOS ONLINE
AT WWW.DVAUCTION.COM

GENERAL INFORMATION

SALE LOCATION: At the farm, 21722 428th Ave, Carthage, SD 57323

Directions to the Farm:

From Carthage: Go east on 222nd St 3 miles to 428th Ave. Turn north and go 4.5 miles. East side of the road.

From Manchester: From Hwy 14 go south on 425th Ave to 215th St. Turn east and go 3 miles to 428th Ave and go south 2.5 miles.

From DeSmet: Go south on Hwy 25 8 miles to 215th St. Go 5 miles west to 428th Ave and turn south and go 2.5 miles.

MOTEL ACCOMMODATIONS:

Kelly Inn, Mitchell, SD. Phone: 605-995-0500.

Days Inn, Mitchell, SD. Phone: 605-996-6208.

Comfort Inn, Mitchell, SD. Phone: 605-996-1333.

De Smet Super Deluxe Inn & Suites, De Smet, SD Phone: 605-854-9388

Best Western, Huron, SD. Phone: 605-352-2000

INSPECTION OF CATTLE:

Cattle are available for inspection and viewing anytime prior to the sale. Please call to make arrangements.

HEALTH:

Interstate health papers furnished on all cattle selling. All bulls semen tested prior to the sale and are guaranteed breeders.

EPDS & \$VALUES:

The American Angus Association is now calculating EPDs on a weekly basis using all available carcass harvest data, ultrasound data and the Igenity Angus specific genomic profile data. It is possible new data has been submitted between the date the catalog was finalized and sale day, which will affect the individual EPDS and \$Values indexes of the animals selling. If your purchasing decision relies highly on the most current data available, please look up animals of interest on the American Angus Association web page prior to viewing the sale offering.

TERMS: Cash - please settle for cattle promptly.

TERMS & CONDITIONS:

All cattle sell according to the standard terms and conditions of the American Angus Association.

TRUCKING: We will be glad to assist in making the best possible trucking arrangements.

INSURANCE:

Will be available sale day through Conover Auction Service, an American Livestock Agent.

LIABILITY:

All persons attending this sale do so at their own risk, legal or otherwise for their safety or the behavior of the animals. The Owners, Auction Service and Sale Staff assume no liability for property loss or any accidents that may occur.

ANNOUNCEMENTS:

From the block will take precedence over the catalog. Buyers unable to attend may send their bids to the Auction Service, Field Representatives or Auctioneer.

LUNCH: Complimentary lunch will be served at 12:00 NOON

Retaining a 1/3 semen revenue sharing interest in each bull in the sale. Buyer maintains 100% possession and salvage value.

SEE BULL WINTERING & GUARANTEE INFO ON PG 1

Watch & bid online for FREE at conoveronlinesales.com
powered by DVAuction

To view or bid at Peckenpaugh Angus Bull Sale

♦ Create an account at www.conoveronlinesales.com under the "register" tab. Apply for bidding approval at least 24 hours prior to the auction - a DV representative will notify you once you have been approved.

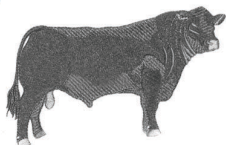
♦ High speed internet is required for successful bidding - be sure to check the lag-time monitor in the top left corner to ensure real-time broadcasts.

♦ Proxy bidding - if you can't make time to watch the sale, register a proxy bid and let our system represent your bid while you're away.

♦ Having troubles? During the auction, you can type a message to the operator at any time for assistance. Our full time support team can also always be reached at (402) 474-5557.

♦ DVA Representative: Justin Dikoff (605) 290-0635 - email: jdikoff@dvauction.com

PECKENPAUGH ANGUS



CARTHAGE, SD

21722 428th Ave - Carthage, SD 57323

TONY PECKENPAUGH
(605) 860-0130 (cell)

BOB PECKENPAUGH
(605) 772-5398 (home) - (605) 860-1503 (cell)
peckenpaughangus@gmail.com
www.peckenpaughangus.com

Sale Managed By:
Conover
Auction Service
P.O. Box 9 - Baxter, IA 50028
AL & JEANNE CONOVER
641-227-3537 - 641-227-3792 (FAX)
DAVE SWEENEY - 641-373-4340
www.conoverauction.com
conover@conoverauction.com

We would like to start off by saying Welcome! Thank You for taking time and looking at our program. Hard to believe it's sale season already. Seems like the sales come faster every year, and the challenges we have faced over the last year have tested cattlemen across a large area. The fall cattle market has held together for producers and quality cattle still pay for themselves at market time and have demand!

We are offering 55 two year old virgin bulls Feb. 22nd. The bulls have had all shots as calves, weaning and had their booster. We use mainly a Zoetis program for vaccination program. They have been 50K tested too. Bulls have all been tested negative for BVD and Johnes Disease. Bulls will be given a Foot Rot shot and Anthrax shot when we semen test the bulls. We try to offer the healthiest bull we can to our customers! Bulls have been able to run out in smaller pastures as they have developed as well.

We lost a member of the Peckenpaugh family this fall, Tom lost his battle to cancer. He loved his Hereford cows and I always joked with him about when he was going to put an Angus bull on them Herefords! He will be greatly missed! However we did gain a new member to the Peckenpaugh family last March. Little Mason John was born and joined his 2 brothers and his parents (Matt and Heather).

If you have any questions about the bulls or would like to view them, please contact us and we will assist you! Stop in and take a look! Bulls will be on DV Auction as well for viewing! We appreciate you taking the time and showing interest in our program and we want to Thank You for it! Look forward to seeing you sale day!

Sincerely,
Peckenpaugh Angus



Tony Peckenpaugh

(605) 860-0130 (cell)

Bob Peckenpaugh

(605) 772-5398 (home) - (605) 860-1503 (cell)

peckenpaughangus@gmail.com

peckenpaughangus.com

GUARANTEE

All bulls selling for \$3,000 or more are guaranteed against breeding injury for the first breeding season. Breeding season is defined as the 90-day period following the first turnout of the bulls.

If a replacement bull is available, he will be provided. Or, if the buyer prefers, credit toward one bull will be given in the following year's sale, less salvage value of the injured bull. Please notify us as soon as possible should injury occur and prior to the injured bull being sold for salvage.

BULL WINTERING PROGRAM

Peckenpaugh Angus will offer FREE bull wintering until April 1, 2019. Buyer will be required to purchase a minimum of 90 days mortality insurance at a rate of 4% of the purchase price. Additional wintering fees of \$3.00 per day will be assessed after April 1st.

If you choose to take your bull home sale day, you will receive \$50 off your purchase price.

Sale Managed By:



AL & JEANNE CONOVER
641-227-3537 • Fax: 641-227-3792
DAVE SWEENEY 641-373-4340
Email: conover@conoverauction.com
www.conoverauction.com

Dear Angus Friends

It is once again a pleasure to assist the Peckenpaugh's with their eighth offering of high-quality Angus bulls. These outstanding herd bull prospects excel at the traits that have made the Angus breed famous; they are easy calving, growthy, efficient, and well positioned to benefit from the grid pricing premiums.

In today's cattle industry, it is not enough to just be black hided. The difference between profit and significant loss in this business can be found in the genetic material. The EPDs and performance information included in this catalog can be used to make comparisons and develop a road map to your economic success.

These bulls are coming two-year-olds that have been properly developed in the same range conditions where they will be asked to service cows while maintaining their athleticism and virility. Studying this catalog should reveal a re-occurring theme. The Peckenpaugh program is built on production traits that favor low-input operations. EPDs will reveal optimum milk and calving ease attributes with high Docility and Heifer Pregnancy values.

We were gratified to see so many repeat customers in 2018 and know that the Peckenpaugh family prides themselves on servicing their clients. As always, we look forward to seeing you on February 22nd at the Peckenpaugh sale facility, Carthage, SD. If you have any questions, don't hesitate to call our office or Peckenpaugh's directly.

*Al and Jeanne Conover
Dave Sweeney*



Al Conover



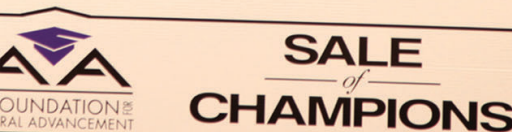
Jeanne Conover



Dave Sweeney

Watch & bid online for FREE at conoveronlinesales.com

powered by DV Auction



IT'S NEW...

IT'S EXCITING...

IT'S CONOVERONLINESALES.COM

Buying online is as easy as 1, 2, 3...

1. Create a new DV Auction account at www.conoveronlinesales.com
2. Apply for bidding approval by clicking on the "details" tab at least 24 hours prior to the auction-a DV representative will notify you once you have been approved
3. Tune in for the sale and make your purchases!

High speed internet is required for successful bidding-be sure to check the lag-time monitor in the top left corner to ensure real-time broadcasts.

Proxy Bidding-if you can't make time to watch the sale, register a proxy bid and let our system represent your bid while you're away. Look for the "proxy bid" tab on the auction listing, and fill in your maximum bids. We'll handle the rest!

Having troubles? During the auction, you can type a message to the operator at any time for assistance. Our full-time support team can also always be reached at (402) 474-5557.



DVA Rep. Justin Dikoff (605) 290-0635 - email: jdikoff@dvauction.com
Please feel free to contact me with questions about the sale or to view the cattle for you.

Introducing Our Newest Herd Sire Acquisition



Montana Example 7069

Reference Sire A

- Example gained National attention as the \$30,500 top-selling bull of the Nov 2018 Montana Ranch Bull & Female Sale. He is an embryo transplant son of the \$100,000 Baldrige Titan A139 from a sixth-generation embryo transplant donor dam from the famed Riverbend Rita tribe.
- His dam, by GAR Progress, is stacked for carcass excellence with a progeny IMF 3@111. Example himself posted an IMF of 5.24% to ratio 140.
- Calving ease, growth, fertility and carcass are all rolled into one tremendous EPD profile culminating with \$W, \$F, \$QG and \$B indexes all in the top 5% or better.
- Future Peckenpaugh sales will feature sons of this dynamic young super-star.
- **50 units of Semen sells as Lots 58 A-E.**

A Montana Example 7069

Born: 04/01/17 +*18844727 Tattoo: 7069 Bull

Baldrige Waylon W34 *
Baldrige Titan A139 +*
 17821946 Baldrige Forever Lady T269

G A R Progress #+*
Montana Rita B026 +*
 17890136 Riverbend Rita Y606 +*

GAR-EGL Protege #+*
 Baldrige Blackcap T163 *
 Baldrige Rapid R31
 Baldrige Forever Lady P164
 G A R Predestined #*
 G A R Objective 2345 *
 Summitcrest Complete 1P55 #*
 Riverbend Rita S241 +

CED	BW	WW	YW	SC	DOC	HP	CEM	Milk		
+9	-.4	+75	+134	+.50	+16	+15.1	+11	+21		
CW		Marb		RE		FAT				
+53	.40	+1.05	.36	+56	.36	+0.048	.34			
								AGI GE-EPD	\$W	\$B
								+71.87	+170.84	

B 44 Perfect Balance 5834

Born: 12/04/15 +*18353122 Tattoo: 5834 Bull

A A R Ten X 7008 S A #*
V A R Discovery 2240 *
 17262835 Deer Valley Rita 0308 +*

Rito Revenue 5M2 of 2536 Pre #+*
Rita 0245 of Rita 7068 5M2 +
 16874033 Rita 7068 of Rita 5FH8 Obj +

Mytty In Focus #*
 A A R Lady Kelton 5551 #
 Sitz Upward 307R #
 G A R Objective 2345 *
 G A R Predestined #*
 G A R Precision 2536
 S S Objective T510 0T26 #*
 Rita 5FH8 of Rita 2V5 FD +*

CED	BW	WW	YW	SC	DOC	HP	CEM	Milk		
+12	+7	+68	+136	+.73	+24	+10.9	+8	+36		
CW		Marb		RE		FAT				
+56	.44	+1.17	.41	+59	.40	+0.039	.38			
								AGI GE-EPD	\$W	\$B
								+72.22	+171.85	



44 Perfect Balance 5834

Reference Sire B

- Selected by Peckenpaugh Angus as the \$13,000 feature of the 2017 Fall 44 Farms Angus Bull Sale. His full brothers "in-blood" were the featured lots 1, 2 and 3 in the landmark event. As his name insinuates, Perfect Balance combines a double-digit CED, a YW EPD in the top 1%, Marb EPD in the top 4% and \$W, \$F, \$G, \$QG and \$B ranging from the top 1% to the top 10% among non-parent bulls.
- His dam descends maternally from the \$7 million producing GAR Precision 2536 considered the \$B matriarch of the breed. Rita 0245 stacks four generations of AI sires that rank in the top 10% or better for Marb EPD.

Peckenpaugh Angus Herd Sires



Danny Bradshaw ©

Hoover Electrify M34
Reference sire C



Danny Bradshaw ©

Hoover CC&7 H421
Reference sire E

C Hoover Electrify M34

Born: 01/13/13 **17603593** **Tattoo:** M34 **Bull**

Basin Excitement
Hoover Electrify
16990022 Blkcp Empress Ellston D241

SydGen CC & 7 #*
Elbamere Queen Ellston J10
16697589 Elbamere Queen S36 #

Basin Expedition R156 +
Basin Lady S532 AK
Woodhill Fusion 177-70L
Blackcap Empress Ellston A28
S A F Connection #+
SydGen Forever Lady 4087
Steele Hi Flyer C12
Elbamere Queen P22

CED	BW	WW	YW	SC	DOC	HP	CEM	Milk	
+3	+1.7	+51	+100	+1.37	+31	+15.1	+4	+22	
CW		Marb		RE		FAT		\$W	\$B
+37 .44		+.05 .40		+.77 .40		-.030 .40		+40.92	+120.07

- This outstanding young herd sire addition gained national attention as the \$24,000 third top-selling bull of the 2014 Hoover Angus sale where he was the 2nd top 205 day wt in his contemporary group of 150 bulls posting a WWR 117.
- His sire, Hoover Electrify was one of the top selling bulls of the 2012 Hoover sale and serves in the ADD Angus herd in Iowa where his BW EPD continues to drop and his WW EPD goes up with each succeeding calf crop.
- His first two calf crops have revealed his carcass trait attributes verified by progeny ratios IMF 42@100, RE 42@101, Rib Fat 42@93 and Rump Fat 42@82.

E Hoover CC&7 H421

Born: 08/17/09 ***16635147** **Tattoo:** H421 **Bull**

S A F Connection #+
SydGen CC & 7 #*
15330743 SydGen Forever Lady 4087

Woodhill Statesman 54K-90N #
Miss Blackcap Ellston F500 #
16036946 Miss Blackcap Ellston B50

SVF Gdar 216 LTD #+
S A F Royal Queen 5084 +
SydGen 1407 Corona 2016 #*
S A F Forever Lady 8292 +
Sitz Greatplains 9520
Woodhill Lucy 666-54K
Roth Famous 1006 #
Miss Blackcap Ellston V71 #

CED	BW	WW	YW	SC	DOC	HP	CEM	Milk	
+9	+5	+46	+82	+1.52	+32	+17.0	+11	+30	
CW		Marb		RE		FAT		\$W	\$B
+20 .48		+.02 .43		+.36 .44		+.008 .44		+50.11	+66.97

- Selected by Peckenpaugh Angus as the featured fall bull in the 2011 Hoover Angus Sale where he posted enviable individual performance of BW 73 lbs, 205 day wt 838 lbs, WWR 122, 365 day wt 1337 lbs, and YWR 110.
- His Pathfinder dam now records BR 5@100, NR 5@106 and YR 3@104.
- Multiple years of progeny records have proven H421 to be a noteworthy calving ease sire with a BWR 112@98.
- Exceptional HD50K analysis and progeny proof have also landed him in the top 2% for Docility, top 3% for Heifer pregnancy, and top 20% for CEDall function and management traits that will keep you in business.

D Leachman Sunrise A144Z

Born: 02/26/12 **+*17443461** **Tattoo:** A144Z **Bull**

Boyd New Day 8005 #+
MCC Daybreak #
14777016 MCC Miss Focus 134 #

Larks Canyon 74D4 #
Tehama Elite Blackbird K620
13582955 T Elite Blackbird Y764 #

A A R New Trend #
S V F Forever Lady 57D
S A F Focus of E R #
M C C Miss Chief 519 +
N Bar Emulation EXT #*
Larks Miss Bando 74A
Paramont Ambush 2172 #
T Elite Blackbird W715 #

CED	BW	WW	YW	SC	DOC	HP	CEM	Milk	
+12	-.2	+52	+96	+89	+13	+13.3	+15	+21	
CW		Marb		RE		FAT		\$W	\$B
+44 .46		+.26 .42		+.80 .42		-.014 .42		+46.92	+113.32

- Sunrise is a well-liked Peckenpaugh Angus herd sire that caught the attention of sale-goers at the 2013 Leachman Cattle of Colorado sale with top-notch individual performance and ultrasound data of IMF 4.96%, IMF ratio 107, RE 15.9%, RE ratio 115.
- His sire, MCC Daybreak is an ABS sire, the 2008 Angus Sire Alliance Winner, and the #2 bull for overall profitability.
- His grandam, T Elite Blackbird Y764 is a second-generation Pathfinder dam and the \$50,000 dam of the most valuable bulls at Tehama Angus Ranch and is truly a legend in the breed.
- His sons pack a lot of growth punch verified by his progeny ratios for WW 20@102, YW 19@102 and RE 20@102.

F Mra Consensus 3012

Born: 01/06/13 **17681367** **Tattoo:** 3012 **Bull**

Connealy Consensus #*
Connealy Consensus 7229 #*
16447771 Blue Lilly of Conanga 16 15804270

Sitz Dash 10277 #*
Mra Lady 1004
17279012 Mra Lady 9017

KMK Alliance 6595 187 #
Blinda of Conanga 004
Woodhill Admiral 77K #
Blue Cash of Conanga 6020
Sitz Upward 307R #
Sitz Everelda Entense 2665 +
BR Right Time 338-54 *
M R Miss Russ 2397

CED	BW	WW	YW	SC	DOC	HP	CEM	Milk	
+12	-.4	+49	+90	+26	+22	+17.6	+9	+19	
CW		Marb		RE		FAT		\$W	\$B
+31 .43		+1.06 .39		+.37 .39		+.038 .37		+53.09	+123.14

- Chosen by Peckenpaugh Angus from the 2014 Mount Rushmore Angus sale offering where he posted individual performance of BWR 92, WWR 102, YWR 110, IMF ratio 139 and RE ratio 107.
- 3012 was born unassisted out of a first-calf heifer and his calving ease credentials are complemented by promising progeny growth indicators such as his progeny WWR 5@103 and a Marbling EPD in the highest 5% of proven sires.

Peckenpaugh Angus Herd Sires

G Montana Timeless 426 SF

Born: 12/08/13 ***17882038** **Tattoo:** 426 **Bull**

Leachman Right Time 338-5605 #+
WMR Timeless 458 #
 16226527 WMR Blackcap 521

S A V Final Answer 0035 #*
SF Barbara 033
 16696476 SF Barbara 819 #+

Hyline Right Time 338 #
 Leachman Erica 1201 +
 W M R Dateline 210
 W M R Blackcap 043
 Sitz Traveler 8180 #
 S A V Emulous 8145
 Woodhill Foresight #+
 H P C A 1407 New Design 365 +

CED	BW	WW	YW	SC	DOC	HP	CEM	Milk
+9	+1.8	+56	+88	+52	+33	+9.9	+13	+27

CW	Marb	RE	FAT	AGI	\$W	\$B				
+38	.46	+.21	.42	+.77	.42	+.020	.42	AGI GE-EPD	+58.46	+101.33

- Selected by Peckenpaugh Angus as the \$18,500 feature of the 2015 Montana Angus Ranch Sale where he posted a WWR 108 and YWR 106 with a RE ratio 109, Rib Fat ratio 70 and Rump Fat ratio 58.
- His sire, WMR Timeless 458 is an Accelerated Genetics feature that is a growth, muscle and power sire. He topped the Wheeler Mountain Angus Bull Sale at \$32,000 2/3 interest.
- His Final Answer dam records NR 4@104 and YR 4@102.



Montana Timeless 426 SF
Reference sire G

H Montana Upward 533 SF

Born: 12/31/14 ***18191275** **Tattoo:** 533 **Bull**

Connealy Onward #*
Sitz Upward 307R #
 14963730 Sitz Henrietta Pride 81M

Connealy Consensus 7229 #*
SF Miss 3437 +*
 18009124 SF Miss 975 +*

Connealy Lead On #
 Altune of Conanga 6104
 Sitz Value 7097 #
 Sitz Henrietta Pride 1370
 Connealy Consensus #*
 Blue Lilly of Conanga 16
 TC Total 410 #
 SF AF Wyffels Miss 5407 +

CED	BW	WW	YW	SC	DOC	HP	CEM	Milk
+10	-1.8	+58	+96	+37	+17	+14.6	+6	+24

CW	Marb	RE	FAT	AGI	\$W	\$B				
+48	.47	+.68	.43	+.71	.42	+.009	.41	AGI GE-EPD	+68.20	+150.67

- Tony Peckenpaugh's \$13,000 2/3 interest choice from the 2016 Montana Ranch Bull Sale where he reported individual performance of BW 74 lbs, BWR 99, WW 765 lbs, WWR 116, YW 1171 lbs, YWR 104, IMF 5.38%, IMF ratio 126, RE 14.1 and RE ratio 103.
- 533 was born unassisted from a first-calf heifer by "Consensus 7229" that was actually bred in the highly-respected Sundberg Farms program in IL.
- He enjoys a balanced EPD profile that ranks him in the breed's elite top 25% for 10 EPD traits and \$value indexes.



Montana Upward 533 SF
Reference sire H

I Pecks CC&7 H421 250

Born: 03/15/12 **17388853** **Tattoo:** 250 **Bull**

SydGen C C & 7 #*
Hoover CC&7 H421 *
 16635147 Miss Blackcap Ellston F500 #

Sinclair IN Time 6BT2
Ms Pecks 6BT2 Edella 930
 16595441 Dahls Edella 348

S A F Connection #+
 SydGen Forever Lady 4087
 Woodhill Statesman 54K-90N #
 Miss Blackcap Ellston B50
 BT Right Time 24J #+
 N Bar Emmaline J4621 #
 Dahls New Design 15
 Dahls Edella 403

CED	BW	WW	YW	SC	DOC	HP	CEM	Milk
+4	+1.6	+62	+111	+1.20	+26	+13.8	+7	+28

CW	Marb	RE	FAT	AGI	\$W	\$B				
+47	.30	+.14	.24	+.34	.29	+.009	.26	AGI GE-EPD	+57.66	+133.11

- Co-owned with Robert Person, Hartford SD
- 205 was a standout in his 52 head contemporary group in 2012 when he posted a 205 day wt 825 lbs, WWR 121, 365 day wt 1356 lbs, YWR 119, IMF 3.98%, IMF ratio 107, RE ratio 103.
- His dam posted individual performance of BWR 104, WWR 112 and YWR 106 prior to her enrollment in the Peckenpaugh breeding program.
- Selected by Robert Person, Hartford SD as the \$6500 feature of the 2014 Peckenpaugh Bull Sale.



Pecks CC&7 H421 250
Reference sire I

Peckenpaugh Angus Two Year Old Bulls



Pecks Timeless 426 704

Lot 1



Pecks H421 553

Maternal brother to Lot 1
Selected by Terry Spilde, SD

Lot

1 Pecks Timeless 426 704

Born: 02/26/17	18920375	Tattoo: 704	Bull
WMR Timeless 458 #	Leachman Right Time 338-5605 #+		
Montana Timeless 426 SF *	WMR Blackcap 521		
17882038 SF Barbara 033	S A V Final Answer 0035 #*		
	SF Barbara 819 #+		
	N Bar Emulation EXT #*		
B A R Ext Traveler 205 #	B A R Queen Traveler 3015 #		
Ms Pecks Pride 074	B A Gunsmoke Y014		
17801291 Ms Pecks GS Pride 848	Ms Pecks VRD EXT 4303		

CED	BW	WW	YW	SC	DOC	HP	CEM	Milk
+10	+0.4	+38	+57	+0.37	+14	+6.5	+10	+35
CW	Marb	RE	FAT	HD 50K		\$W	\$B	
+14	.37	+38 .32	+51 .33	+0.12	.29	+53.02	+56.27	

- Individual Performance: BW 81 lbs, BWR 98, 205 Wt. 713 lbs, WWR 103, 365 Wt. 1251 lbs. YWR 94.
- Dam's Production: BR 4@100, NR 4@100, YR 3@96. Calving Interval 5@356 days.
- Actual Ultrasound Scan Data: %IMF 2.54, REA 12.2, Rib Fat .25, Rump Fat .27.
- Terry Spilde, Highmore SD purchased both of his maternal brothers in 2015 and 2017 at \$5500 and \$4500 respectively.
- He boasts a double-digit CED ranking in the top 20% of the breed.
- **Recommended for heifers or cows.**

Lot

2 Pecks Timeless 706

Born: 02/27/17	19281136	Tattoo: 706	Bull
WMR Timeless 458 #	Leachman Right Time 338-5605 #+		
Montana Timeless 426 SF *	WMR Blackcap 521		
17882038 SF Barbara 033	S A V Final Answer 0035 #*		
	SF Barbara 819 #+		
	SydGen C C & 7 #*		
Hoover CC&7 H421 *	Miss Blackcap Ellston F500 #		
Ms Pecks Wix 328	Rito 112 of 2536 Rito 616 #+*		
19111593 Fortunes Miss Wix 617	Fortunes Miss Wix 401		

CED	BW	WW	YW	SC	DOC	HP	CEM	Milk
+1	+3.4	+67	+111	+0.21	+30	+13.0	+7	+25
CW	Marb	RE	FAT	HD 50K		\$W	\$B	
+49	.37	+12 .33	+82 .33	-0.29	.30	+59.48	+135.27	

- Individual Performance: BW 71 lbs, BWR 95, 205 Wt. 787 lbs, WWR 110, 365 Wt. 1219 lbs. YWR 106.
- Actual Ultrasound Scan Data: %IMF 4.44, REA 13.7, Rib Fat .24, Rump Fat .25.
- Born twin with a bull.
- Astounding individual performance gave rise to EPD values that rank him #5 in the sale offering for WW EPD (top 10% of the breed) and # 5 for \$W value.



Pecks Timeless 706

Lot 2



Montana Timeless 426 SF

Sire of 16 lots in the sale including 1, 2 and 3.

Peckenpaugh Angus Two Year Old Bulls



Lot

3 Pecks Timeless 426 709

Born: 03/02/17	18920377	Tattoo: 709	Bull
WMR Timeless 458 #	Leachman Right Time 338-5605 #+		
Montana Timeless 426 SF *	WMR Blackcap 521		
17882038 SF Barbara 033	S A V Final Answer 0035 #*		
	SF Barbara 819 #+		
	SydGen C C & 7 #*		
Hoover CC&7 H421 *	Miss Blackcap Ellston F500 #		
Ms Pecks Pride 325	B A Gunsmoke Y014		
17879827 Ms Pecks GS Pride 848	Ms Pecks VRD EXT 4303		

CED	BW	WW	YW	SC	DOC	HP	CEM	Milk
+12	+0.1	+48	+87	+0.43	+31	+7.0	+14	+21
CW	Marb	RE	FAT	HD 50K		\$W	\$B	
+28	.37	+43 .32	+32 .32			+47.58	+90.80	

- Individual Performance: BW 76 lbs, BWR 93, 205 Wt. 656 lbs, WWR 95, 365 Wt. 1382 lbs. YWR 104.
- Dam's Production: BR 2@94, NR 2@97, YR 2@102. IMF 1@108, Rib Fat 1@95, Rump Fat 1@86. Calving Interval 2@330 days.
- Actual Ultrasound Scan Data: %IMF 3.43, REA 13.0, Rib Fat .28, Rump Fat .30.
- His full brother was the \$3750 selection of Lyle and Louise VanderVorste, Pollock SD.
- He recorded the #1 heaviest adj 365-day wt and shares the #1 highest CED EPD in the sale offering.
- **Recommended for heifers or cows.**

Pecks Timeless 426 709

Lot 3

#1 Heaviest Adj Yearling Wt and #1 highest CED EPD

Lot

4 Pecks H421 710

Born: 03/02/17	18920379	Tattoo: 710	Bull
SydGen C C & 7 #*	S A F Connection #+		
Hoover CC&7 H421 *	SydGen Forever Lady 4087		
16635147 Miss Blackcap Ellston F500 #	Woodhill Statesman 54K-90N #		
	Miss Blackcap Ellston B50		
	Papa Universe 515 #*		
G D A Universe 726G #+	G D A Bonny 412D +		
BTC Blackcap Heiress 304	BR Midland #		
17517495 Sir Wims Blackcap Heiress619 +	VT EXT W35 +		

CED	BW	WW	YW	SC	DOC	HP	CEM	Milk
+4	+2.1	+48	+79	+1.32	+13	+14.3	+7	+26
CW	Marb	RE	FAT	HD 50K		\$W	\$B	
+24	.37	+83 .32	+23 .32			+44.79	+114.40	

- Individual Performance: BW 89 lbs, 205 Wt. 698 lbs, WWR 101, 365 Wt. 1362 lbs. YWR 102.
- Dam's Production: NR 1@101, YR 1@102.
- Actual Ultrasound Scan Data: %IMF 5.63, REA 12.0, Rib Fat .32, Rump Fat .21.
- He combines the #3 heaviest adj 365-day wt with the #1 Marbling EPD in the sale offering.

Pecks H421 710

Lot 4

#3 Heaviest Adj Yearling Wt #1 highest Marbling EPD



Peckenpaugh Angus Two Year Old Bulls



Pecks Prowler 712

Lot 5



HF Prowler 43U

Sire of Lots 5 & 6

Lot 5 Pecks Prowler 712

Born: 03/04/17	19281114	Tattoo: 712	Bull
HF Kodiak 5R HF Prowler 43U # 16894092 HF Rosebud 98P	Sandy Bar Advantage 43M Wilbar Ruby 955N Riverbend Powerline 0050 + HF Rosebud 138J Sinclair Net Present Value #+* Sinclair Queen M 05A3 1Z13 G 13 Structure # KMD Governess 1014		
Sinclair Added Value 6PV31 Ms Pecks 6PV31 Lass 909 16595442 KMD Lass 70			

CED	BW	WW	YW	SC	DOC	HP	CEM	Milk
+7	+1.9	+64	+97	-0.01	+13	+6.9	+7	+10
CW	Marb	RE	FAT			\$W	\$B	
+27	.37	+47 .33	+16 .34	+0.31	.31	+51.30	+95.14	

- Individual Performance: BW 85 lbs, BWR 100, 205 Wt. 745 lbs, WWR 104, 365 Wt. 1171 lbs. YWR 102.
- Dam's Production: NR 5@99, YR 5@99. IMF 5@108, RE 5@100. Calving Interval 6@361 days.
- Adjusted Ultrasound Scan Data: %IMF 3.79, Ratio 102, REA 10.8, Rib Fat .33, Rump Fat .43.
- Neal Olson, Artesian SD selected his maternal brother from the 2014 sale at \$3250 while Steven Neuhardt, Wolsey ND secured a brother for \$6000 in 2015 and Kurt Hoffman, Dell Rapids SD acquired a brother in 2017 at \$4000.
- His sire, HF Prowler 43U is among a few carefully selected AI sires used in the Peckenpaugh breeding program. He is an outcross Canadian-bred sire delivering reasonable calving ease with extra power and performance.

Lot 6 Pecks Prowler 717

Born: 03/08/17	18920381	Tattoo: 717	Bull
HF Kodiak 5R HF Prowler 43U # 16894092 HF Rosebud 98P	Sandy Bar Advantage 43M Wilbar Ruby 955N Riverbend Powerline 0050 + HF Rosebud 138J S A V Final Answer 0035 #* H A R B Black Lady 375 J H # Pecks Gunsmoke Stats 5253 Larkota Lady 309		
HARB Pendleton 765 J H # Ms Pecks Lady 036 16861633 Ms Pecks Lady 807 #			

CED	BW	WW	YW	SC	DOC	HP	CEM	Milk
+12	-1.5	+40	+64	+1.45	+17	+16.5	+9	+26
CW	Marb	RE	FAT			\$W	\$B	
+31	.37	+34 .33	+17 .34	+0.41	.31	+52.37	+87.26	

- Individual Performance: BW 79 lbs, BWR 94, 205 Wt. 789 lbs, WWR 111, 365 Wt. 1184 lbs. YWR 104.
- Dam's Production: BR 2@95, NR 2@110, YR 2@103. Calving Interval 4@350 days.
- Adjusted Ultrasound Scan Data: %IMF 4.25, REA 11.6, Rib Fat .31, Rump Fat .22.
- His maternal brother was the \$6500 herd sire selection of Amanda Gehm, DeSmet SD.
- He shares the #1 highest CED and the #1 lowest BW EPD in the sale offering.
- **Recommended for heifers or cows.**

Lot 7 Pecks Electrify 718

Born: 03/08/17	18920382	Tattoo: 718	Bull
Hoover Electrify Hoover Electrify M34 17603593 Elbamere Queen Ellston J10	Basin Excitement #* Blkcp Empress Ellston D241 SydGen C C & 7 #* Elbamere Queen S36 # S A F 598 Bando 5175 #+ Mill Coulee Barbara K 323 # Bon View New Design 878 # L V V F Hoff Hi Spade of 611		
LT 598 Bando 9074 # LAU Karama JC 915 15219103 LAU Karama JC 273 #			

CED	BW	WW	YW	SC	DOC	HP	CEM	Milk
+6	+0.4	+30	+61	+1.61	+27	+10.0	+8	+29
CW	Marb	RE	FAT			\$W	\$B	
+14	.38	+40 .34	+37 .34	+0.34	.32	+32.73	+72.94	

- Individual Performance: BW 86 lbs, 205 Wt. 723 lbs, WWR 102, 365 Wt. 1125 lbs. YWR 99.
- Dam's Production: BR 7@94, NR 7@105, YR 4@101. IMF 4@105, RE 4@100.
- Adjusted Ultrasound Scan Data: %IMF 4.54, Ratio 106, REA 12.7, Ratio 106, Rib Fat .27, Rump Fat .23, Ratio 100.
- His dam was a remunerative cow in the Brice Conover herd in Iowa where she produced herd sires for Clarke Burns, Brookfield MO; Steve Couchman, Corydon IA and D-H Cattle Co, Cumming IA through former IA Angus Bull Tests.
- **Recommended for heifers or cows.**

Lot 6
#1 highest
CED EPD
#1 Lowest
BW EPD

Peckenpaugh Angus Two Year Old Bulls



Pecks Timeless 426 726

Lot 8

Lot 10
2 Largest
Ribeye Area

Lot

8 Pecks Timeless 426 726

Born:	18920384	Tattoo:	726	Bull
WMR Timeless 458 #	Leachman Right Time 338-5605 #+	WMR Blackcap 521		
Montana Timeless 426 SF *	S A V Final Answer 0035 **	SF Barbara 819 #+		
17882038 SF Barbara 033	SydGen C C & 7 #*	Miss Blackcap Ellston F500 #		
	Hoover CC&7 H421 *	KMD Alliance 780		
Miss Pecks Rita 339	18432243 Ms Pecks Rita 0130	Sik's Fame 7981		

CED	BW	WW	YW	SC	DOC	HP	CEM	Milk
+10	+0.5	+52	+78	+0.47	+19	+11.2	+15	+18
CW	Marb	RE	FAT	HD 50K	\$W	\$B		
+19	.39	+41	.35	+0.034	.33	+46.86	+82.94	

- Individual Performance: BW 84 lbs, 205 Wt. 669 lbs, WWR 94, 365 Wt. 1067 lbs. YWR 94.
- Dam's Production: NR 2@95, YR 2@97. Calving Interval 3@352 days.
- Adjusted Ultrasound Scan Data: %IMF 3.32, REA 12.6, Ratio 105, Rib Fat .30, Rump Fat .20, Ratio 87.
- His maternal brother was the herd sire selection of Jordan Meyer, Cavour SD in 2017.
- He ranks in the breed's top 20% for CED EPD.

Lot

9 Pecks H421 729

Born:	03/07/17	*19281113	Tattoo:	729	Bull
SydGen C C & 7 #*	S A F Connection #+	SydGen Forever Lady 4087			
Hoover CC&7 H421 *	Woodhill Statesman 54K-90N #	Miss Blackcap Ellston B50			
16635147 Miss Blackcap Ellston F500 #	Bon View New Design 878 #	N Bar Primrose 2424			
	W C C Special Design L309 #+*	Sinclair IN Time 6BT2			
Ms Pecks Sally 321	17880640 Ms Pecks Sally 823	Ms Pecks Regulator Sally6231			

CED	BW	WW	YW	SC	DOC	HP	CEM	Milk
+2	+2.5	+57	+101	+0.65	+24	+8.8	+11	+23
CW	Marb	RE	FAT	HD 50K	\$W	\$B		
+40	.38	+38	.34	+0.043	.32	+48.19	+121.07	

- Individual Performance: BW 71 lbs, BWR 93, 205 Wt. 728 lbs, WWR 102, 365 Wt. 1112 lbs. YWR 97.
- Dam's Production: IMF 2@111.
- Adjusted Ultrasound Scan Data: %IMF 4.96, Ratio 134, REA 10.5, Rib Fat .29, Rump Fat .31.
- Born twin with a bull.
- His dam recorded astonishing individual performance featuring a 205-day wt 712 lbs, WWR 122.
- He recorded the #4 highest IMF measurement in the sale offering.

Lot

10 Pecks H421 731

Born:	03/12/17	18920386	Tattoo:	731	Bull
SydGen C C & 7 #*	S A F Connection #+	SydGen Forever Lady 4087			
Hoover CC&7 H421 *	Woodhill Statesman 54K-90N #	Miss Blackcap Ellston B50			
16635147 Miss Blackcap Ellston F500 #	TC Aberdeen 759 #	C R A Bextor 872 5205 608 #			
	Ms Pecks Bella 220	TC Blackbird 4034 #+			
17390125 Ms Pecks Gunsmoke Stats 6216		B A Gunsmoke Y014			
		Roth Miss Stats 0188			

CED	BW	WW	YW	SC	DOC	HP	CEM	Milk	
+10	-0.3	+50	+84	+0.99	+23	+14.0	+13	+25	
CW	Marb	RE	FAT	HD 50K	\$W	\$B			
+18	.38	+45	.34	+0.52	.34	+0.018	.31	+55.04	+79.56

- Individual Performance: BW 80 lbs, BWR 94, 205 Wt. 735 lbs, WWR 100, 365 Wt. 1161 lbs. YWR 100.
- Dam's Production: BR 1@94, NR 1@100, YR 1@100. IMF 1@100, RE 1@100, Rib Fat 1@100, Rump Fat 1@100.
- Adjusted Ultrasound Scan Data: %IMF 3.86, Ratio 100, REA 13.7, Ratio 100, Rib Fat .46, Ratio 100, Rump Fat .34, Ratio 100.
- His dam combined individual performance of WWR 103, IMF ratio 106, RE ratio 113 and Rib Fat ratio 100 to earn her invitation to the Peckenpaugh breeding program.
- He posted the #2 largest ribeye area in the sale offering.
- Ranks in the top 20% for both CED and BW EPDs.
- **Recommended for heifers or cows.**



Hoover CC&7 H421

Reference sire E

Peckenpaugh Angus Two Year Old Bulls



Pecks Timeless 426 732

Lot 11



Pecks Timeless 426 6100

Full brother to Lot 11
selected by Lyle VanderVorste, SD

Lot 11 Pecks Timeless 426 732

Born: 03/12/17 **18920387** **Tattoo:** 732 **Bull**
 WMR Timeless 458 #
Montana Timeless 426 SF *
17882038 SF Barbara 033
 Hoover CC&7 H421 *
Ms Pecks Enchantress 3164
18437213 Ms Pecks Enchantress 0112
 Leachman Right Time 338-5605 #+
 WMR Blackcap 521
 S A V Final Answer 0035 #*
 SF Barbara 819 #+
 SydGen C C & 7 #*
 Miss Blackcap Ellston F500 #
 Pecks Gunsmoke Pride 7229
 Ms Pecks Enchantress 7264

CED	BW	WW	YW	SC	DOC	HP	CEM	Milk	
+3	+2.8	+55	+93	+0.47	+19	+9.5	+9	+21	
CW	Marb	RE	FAT	HD 50K		\$W	\$B		
+27	.37	+0.09	.33	+4.8	.34	+0.027	.31	+48.43	+76.04

- Individual Performance: BW 85 lbs, 205 Wt. 716 lbs, WWR 101, 365 Wt. 1161 lbs. YWR 102.
- Dam's Production: NR 3@102, YR 3@102. IMF 2@101, RE 2@105. Calving Interval 3@355 days.
- Adjusted Ultrasound Scan Data: %IMF 4.17, REA 12.3 Ratio 103, Rib Fat .30, Rump Fat .36.
- His full brother was a \$4500 choice of Lyle and Louise VanderVorste, Pollock SD in 2018. A maternal brother was the \$3500 herd sire selection of Jerome Nelson, Lake Preston SD in 2017.

Lot 12 Pecks Timeless 733

Born: 03/13/17 **19281137** **Tattoo:** 733 **Bull**
 WMR Timeless 458 #
Montana Timeless 426 SF *
17882038 SF Barbara 033
 Hoover CC&7 H421 *
Ms Pecks Edella 375
19111589 Ms Pecks Edella 9104
 Leachman Right Time 338-5605 #+
 WMR Blackcap 521
 S A V Final Answer 0035 #*
 SF Barbara 819 #+
 SydGen C C & 7 #*
 Miss Blackcap Ellston F500 #
 Pecks VRD EXT Rancher 5204
 Dahls Edella 434

CED	BW	WW	YW	SC	DOC	HP	CEM	Milk	
+6	+1.6	+48	+80	+0.81	+29	+14.9	+13	+18	
CW	Marb	RE	FAT	HD 50K		\$W	\$B		
+30	.38	-.09	.34	+5.6	.34	+0.013	.32	+38.30	+69.98

- Individual Performance: BW 86 lbs, 205 Wt. 687 lbs, WWR 96, 365 Wt. 1122 lbs. YWR 97.
- Dam's Production: NR 1@96, YR 1@97. RE 1@103, Rib Fat 1@85, Rump Fat 1@92.
- Adjusted Ultrasound Scan Data: %IMF 3.53, REA 12.2, Ratio 103, Rib Fat .22, Ratio 85, Rump Fat .23, Ratio 92.
- He is a 3/4 brother to lots 11,13 and 14, as well as the \$7500 top-selling bull of the 2018 sale, Pecks Timeless 426 614 selected by Peckenpaugh Ranch.



Pecks Timeless 733

Lot 12



Pecks Timeless 426 614

\$7500 Top-Selling bull of 2018
and 3/4 brother to Lots 11-14.

Peckenpaugh Angus Two Year Old Bulls



Pecks Timeless 737

Lot 13

**Featuring
16 sons of Montana
Timeless 426 SF**

Lot 13 Pecks Timeless 737

Born: 03/14/17	19281141	Tattoo: 737	Bull
WMR Timeless 458 #	Leachman Right Time 338-5605 #+		
Montana Timeless 426 SF *	WMR Blackcap 521		
17882038 SF Barbara 033	S A V Final Answer 0035 #*		
	SF Barbara 819 #+		
	SydGen C C & 7 #*		
Hoover CC&7 H421 *	Miss Blackcap Ellston F500 #		
Ms Pecks Pride 3121	B/R New Frontier 095 #+		
17879833 Ms Pecks Pride 038	Ms Pecks EXT Rancher 01 PA		

CED	BW	WW	YW	SC	DOC	HP	CEM	Milk
+8	+1.8	+46	+83	+1.28	+33	+13.9	+12	+28
CW		Marb		RE		FAT		
+31	.38	+14	.34	+46	.35	+014	.32	
						\$W	\$B	
						+43.00	+89.56	

- Individual Performance: BW 87 lbs, 205 Wt. 724 lbs, WWR 101, 365 Wt. 1166 lbs. YWR 101.
- Dam's Production: NR 2@99, YR 2@102.
- Adjusted Ultrasound Scan Data: %IMF 2.64, REA 11.6, Rib Fat .27, Rump Fat .16, Ratio 67.
- His dam posted individual performance of BWR 98 and WWR 110 prior to her recruitment into the Peckenpaugh breeding program.
- HT Albrecht, DeSmet SD selected his maternal brother from the 2017 sale offering.

Lot 14 Pecks Timeless 750

Born: 03/17/17	*19281128	Tattoo: 750	Bull
WMR Timeless 458 #	Leachman Right Time 338-5605 #+		
Montana Timeless 426 SF *	WMR Blackcap 521		
17882038 SF Barbara 033	S A V Final Answer 0035 #*		
	SF Barbara 819 #+		
	SydGen C C & 7 #*		
Hoover CC&7 H421 *	Miss Blackcap Ellston F500 #		
Pecks Edella 416 *	Sinclair IN Time 6BT2		
18227634 Ms Pecks 6BT2 Edella 930	Dahls Edella 348		

CED	BW	WW	YW	SC	DOC	HP	CEM	Milk
+3	+1.5	+45	+73	+1.20	+39	+12.3	+12	+28
CW		Marb		RE		FAT		
+17	.38	+08	.34	+50	.34	-003	.32	
						\$W	\$B	
						+47.36	+61.37	

- Individual Performance: BW 88 lbs, 205 Wt. 737 lbs, WWR 103, 365 Wt. 1151 lbs. YWR 103.
- Dam's Production: NR 2@105, YR 2@105. IMF 2@105, RE 2@112. Calving Interval 2@334 days.
- Adjusted Ultrasound Scan Data: %IMF 3.11, REA 13.3, Ratio 109, Rib Fat .22, Ratio 96, Rump Fat .30.
- His maternal brother was the standout of the 2018 offering where he recorded a WWR 106, YWR 107, IMF ratio 126 and RE ratio 115.



Pecks Timeless 750

Lot 14



Pecks Timeless 426 628

\$6500 Paternal brother to Lots 11 - 14 and more

Peckenpaugh Angus Two Year Old Bulls



Lot
15 Pecks Sunrise 751

Born: 03/19/17 **19281116** **Tattoo: 751** **Bull**

MCC Daybreak #
Leachman Sunrise A144Z +*
17443461 Tehama Elite Blackbird K620

S A V 004 Traveler 4412 +
Fortunes Miss Wix 702 +
15754160 Miss Wix 2021 Hc Mc Cumber +

Boyd New Day 8005 #+
MCC Miss Focus 134 #
Larks Canyon 74D4 #
T Elite Blackbird Y764 #
S A V 8180 Traveler 004 #
S A V Erica 0178
Leachman Right Time #+
Miss Wix 7111 of Mc Cumber +

CED	BW	WW	YW	SC	DOC	HP	CEM	Milk	
+6	+1.1	+50	+92	+0.25	+9	+9.3	+9	+30	
CW		Marb		RE		FAT		\$W	\$B
+35	.38	+49	.34	+25	.35	+0.19	.32	+51.59	+104.84

- Individual Performance: BW 87 lbs, 205 Wt. 776 lbs, WWR 108, 365 Wt. 1147 lbs. YWR 99.
- Dam's Production: NR 6@105, YR 2@103. IMF 4@107, Rib Fat 4@98. Calving Interval 9@364 days.
- Adjusted Ultrasound Scan Data: %IMF 4.8, Ratio 130, REA 12.6, Ratio 103, Rib Fat .30, Rump Fat .35.
- His dam was engineered in the Rafter U Cross program but descends from the famed "Miss Wix" family at McCumber's only three generations from the renowned Miss Wix 365 of McCumber.
- His maternal brother was the \$4250 herd sire selection of Kurt Hoffman, Dell Rapids, SD from the 2018 sale offering.

Lot
16 Pecks Double Vision 756

Born: 03/20/17 ***19286803** **Tattoo: 756** **Bull**

Connealy Reflection #
Jindra Double Vision *
16748826 Hoff Rachel 8312 405 +

Pecks VRD 967
Ms Pecks Pride 4119
18964804 Ms Pecks Pride 106

Bon View New Design 878 #
Happy Grill of Conanga 6260
Hoff Limited Edition S C 594 #
Hoff Miss Expo S C 4223
Vermilion Dateline 7078 #
Sik Blueblood Lady 37376
G A R Exaltation 3144 #+
Ms Pecks EXT Stockman 3305

CED	BW	WW	YW	SC	DOC	HP	CEM	Milk	
+3	+2.4	+44	+79	+0.82	+21	+14.0	+11	+22	
CW		Marb		RE		FAT		\$W	\$B
+35	.38	+78	.35	+13	.35	+0.08	.33	+34.57	+114.19

- Individual Performance: BW 85 lbs, 205 Wt. 658 lbs, WWR 92, 365 Wt. 1108 lbs. YWR 96.
- Dam's Production: YR 1@96. IMF 1@119, Rib Fat 1@83, Rump Fat 1@79.
- Adjusted Ultrasound Scan Data: %IMF 4.42, Ratio 119, REA 9.9, Rib Fat .19, Ratio 83, Rump Fat .19, Ratio 79.
- His sire, Jindra Double Vision is a Genex featured sire with an outcross pedigree and \$B in the top 4%. Double Vision was lead bull in the popular Jindra heavyweight Pen of Three bulls at the 2011 National Western and was the top selling bull of their 2011 Bull Sale. He was a crowd favorite in the display pens at the 2012 and 2013 NWSS.

Pecks Sunrise 751

Lot 15



Pecks 250 6139
Maternal brother to Lot 15
selected by Kurt Hoffman, SD

Lot
17 Pecks Upward 533 760

Born: 03/21/17 ***19281143** **Tattoo: 760** **Bull**

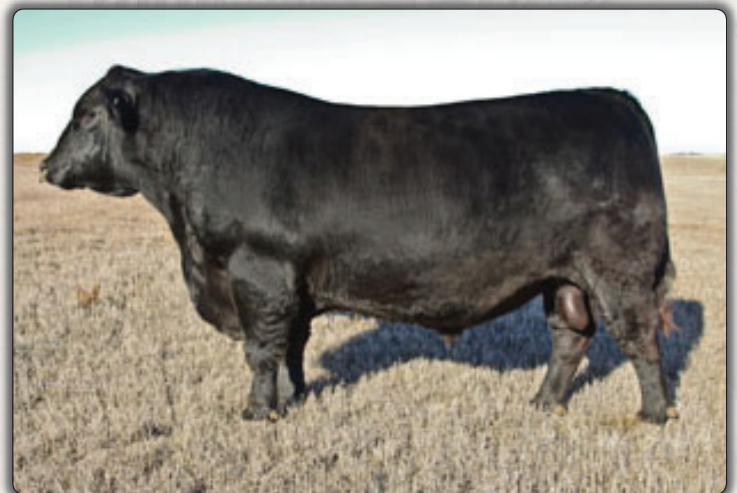
Sitz Upward 307R #
Montana Upward 533 SF *
18191275 SF Miss 3437 +*

CAV Brilliance 618-2618
Ms Pecks Lady 485
19096486 Ms Pecks Lady 170

Connealy Onward #*
Sitz Henrietta Pride 81M
Connealy Consensus 7229 #*
SF Miss 975 +*
S A V Brilliance 8077 #*
Gannon Lassie F618
LaGrand Marathon 8166 +
Ms Pecks Regulator Stats7240 #

CED	BW	WW	YW	SC	DOC	HP	CEM	Milk	
+10	-0.7	+32	+58	+0.22	+12	+8.2	+11	+19	
CW		Marb		RE		FAT		\$W	\$B
+10	.39	+66	.35	+56	.36	-0.01	.33	+32.29	+72.27

- Individual Performance: BW 79 lbs, BWR 96, 205 Wt. 624 lbs, WWR 87, 365 Wt. 1061 lbs. YWR 92.
- Dam's Production: BR 1@96. IMF 1@162, RE 1@106, Rump Fat 1@75.
- Adjusted Ultrasound Scan Data: %IMF 6.00, Ratio 162, REA 12.9, Ratio 106, Rib Fat .25, Rump Fat .18, Ratio 75.
- He recorded the #2 highest IMF measurement in the sale offering.
- Take advantage of his CED in the top 20% and BW EPD in the top 15% of non-parent bulls.
- **Recommended for heifers or cows.**



Jindra Double Vision
Sire of Lot 16

Peckenpaugh Angus Two Year Old Bulls



Pecks 250 764

Lot 18



Pecks 250 6134

\$7000 Maternal brother to Lot 19
selected by Gary Utman, IA

Lot 18 Pecks 250 764

Born: 03/23/17	19281147	Tattoo: 764	Bull
Hoover CC&7 H421 Pecks CC&7 H421 250 17388853 Ms Pecks 6BT2 Edella 930	SydGen CC & 7 #* Miss Blackcap Ellston F500 # Sinclair IN Time 6BT2 Dahls Edella 348 HARB Pendleton 765 J H # Ms Pecks Rebecca 9200 TC Aberdeen 759 # Ms Pecks Gunsmoke Stats 6216		
Pecks Pendleton 136 Ms Pecks Bella 336 18778796 Ms Pecks Bella 135			

CED	BW	WW	YW	SC	DOC	HP	CEM	Milk
+0	+2.2	+60	+102	+0.52	+24	+14.5	+3	+17
CW	Marb	RE	FAT	HD 50K	\$W	\$B		
+35	.37	+35 .33	+35 .33	+0.41	.31	+46.10 +110.67		

- Individual Performance: BW 87 lbs, 205 Wt. 842 lbs, WWR 117, 365 Wt. 1290 lbs. YWR 112.
- Dam's Production: BR 2@96, NR 2@102, YR 2@102. RE 2@103. Calving Interval 2@363 days.
- Adjusted Ultrasound Scan Data: %IMF 4.03, Ratio 109, REA 12.6, Ratio 103, Rib Fat .38, Rump Fat .37.
- This tremendous growth bull posted enviable across-the-board individual performance measures. In fact, he recorded the #3 heaviest adj 205 day wt. in the sale offering.

Lot 19 Pecks Timeless 768

Born: 03/23/17	19281109	Tattoo: 768	Bull
WMR Timeless 458 # Montana Timeless 426 SF * 17882038 SF Barbara 033	Leachman Right Time 338-5605 #+ WMR Blackcap 521 S A V Final Answer 0035 #* SF Barbara 819 #+ N Bar Emulation EXT #* G A R Scotch Cap 309 + Foss Stockman 129 Ms Pecks EXT Rancher 01 PA		
G A R Exaltation 3144 #+ Ms Pecks Pride 106 17389773 Ms Pecks EXT Stockman 3305			

CED	BW	WW	YW	SC	DOC	HP	CEM	Milk
+8	+0.6	+44	+69	+0.65	+9	+8.7	+17	+36
CW	Marb	RE	FAT	HD 50K	\$W	\$B		
+27	.40	+53 .36	+61 .36	+0.01	.34	+55.02 +101.40		

- Individual Performance: BW 84 lbs, BWR 99, 205 Wt. 770 lbs, WWR 107, 365 Wt. 1178 lbs. YWR 102.
- Dam's Production: BR 2@99, NR 2@104, YR 2@108. IMF 2@107, RE 2@113. Calving Interval 4@353 days.
- Adjusted Ultrasound Scan Data: %IMF 4.68, Ratio 126, REA 13.4, Ratio 110, Rib Fat .21, Ratio 91, Rump Fat .24, Ratio 100.
- His maternal brother was a performance standout in 2018 that was the \$7000 fourth top-selling bull selected by Gary Utman, Modale IA.
- He shares the #4 largest ribeye area in the sale offering.

Lot 20 Pecks Upward 533 771

Born: 03/23/17	19281132	Tattoo: 771	Bull
Sitz Upward 307R # Montana Upward 533 SF * 18191275 SF Miss 3437 +*	Connealy Onward #* Sitz Henrietta Pride 81M Connealy Consensus 7229 #* SF Miss 975 +* N Bar Emulation Ext A1747 N Bar Blackbird S C C 2A6 B A Gunsmoke Y014 Ms Pecks VRD EXT 4303		
Sinclair Express 8V19 Ms Pecks Pride 4106 19111592 Ms Pecks GS Pride 848			

CED	BW	WW	YW	SC	DOC	HP	CEM	Milk
+7	-0.6	+54	+88	+0.75	+18	+9.8	+11	+18
CW	Marb	RE	FAT	HD 50K	\$W	\$B		
+44	.37	+77 .33	+76 .33	+0.02	.31	+52.42 +152.82		

- Individual Performance: BW 71 lbs, BWR 89, 205 Wt. 774 lbs, WWR 108, 365 Wt. 1182 lbs. YWR 102.
- Dam's Production: BR 1@89, NR 1@108, YR 1@102. IMF 1@114, RE 1@106, Rump Fat 1@76.
- Adjusted Ultrasound Scan Data: %IMF 5.38, Ratio 114, REA 12.5, Ratio 106, Rib Fat .27, Rump Fat .19, Ratio 76.
- Calving ease, growth and carcass attributes are all realized in this herd sire prospect.
- He boasts the #3 highest individual IMF measurement and the #2 highest \$B value in the sale offering.
- **Recommended for heifers or cows.**

Lot 21 Pecks Timeless 772

Born: 03/24/17	19281138	Tattoo: 772	Bull
WMR Timeless 458 # Montana Timeless 426 SF * 17882038 SF Barbara 033	Leachman Right Time 338-5605 #+ WMR Blackcap 521 S A V Final Answer 0035 #* SF Barbara 819 #+ HARB Pendleton 765 J H # Ms Pecks Polly 925 TC Aberdeen 759 # Ms Pecks Rightline Pride6258		
Pecks Pendleton 112 Ms Pecks Pride 347 18806892 Ms Pecks Pride 147			

CED	BW	WW	YW	SC	DOC	HP	CEM	Milk
+7	+1.0	+43	+70	+0.81	+21	+10.4	+12	+33
CW	Marb	RE	FAT	HD 50K	\$W	\$B		
+20	.37	+10 .33	+39 .34	+0.16	.31	+53.51 +63.19		

- Individual Performance: BW 98 lbs, 205 Wt. 684 lbs, WWR 92, 365 Wt. 1177 lbs. YWR 96.
- Dam's Production: NR 2@97, YR 2@97. IMF 2@103, Rump Fat 2@75. Calving Interval 2@355 days.
- Adjusted Ultrasound Scan Data: %IMF 2.89, REA 10.9, Rib Fat .28, Rump Fat .20, Ratio 91.
- His sire, Montana Timeless 426 SF was selected by Peckenpaugh Angus as the \$18,500 feature of the 2015 Montana Angus Ranch Sale where he posted a WWR 108 and YWR 106 with a RE ratio 109, Rib Fat ratio 70 and Rump Fat ratio 58.

Peckenpaugh Angus Two Year Old Bulls



Pecks Timeless 780

Lot 24



CB Block Party 156
Sire of Lot 22

Lot 22 Pecks Block Party 776

Born: 03/25/17		19286826		Tattoo: 776		Bull	
Werner War Party 2417 #+*				Connealy Onward #*			
CB Block Party 156 #*				BAAR USA Lady Jaye 489 +			
17013539 CB 965 Mainline				Woodhill Mainline #			
Sinclair Added Value 6PV31				742 CB Yield Grade			
Ms Pecks Rebecca 835				Sinclair Net Present Value #+*			
16265161 Ms Pecks Stats Flash 2309				Sinclair Queen M 05A3 1Z13			
				Jasy Mr Impact 2F			
				Roth Rebecca 0145			

CED	BW	WW	YW	SC	DOC	HP	CEM	Milk
-7	+4.5	+46	+71	+1.69	+6	+8.9	+5	+32
CW	Marb	RE	FAT	HD 50K		\$W	\$B	
+31	.40	+.35 .36	+.42 .36	-.016	.34	+40.70	+106.22	

- Individual Performance: BW 93 lbs, 205 Wt. 695 lbs, WWR 97, 365 Wt. 1111 lbs. YWR 97.
- Dam's Production: NR 5@103, YR 3@102. RE 3@100, Rib Fat 3@77, Rump Fat 3@85.
- Adjusted Ultrasound Scan Data: %IMF 3.39, REA 11.5, Rib Fat .17, Ratio 74, Rump Fat .20, Ratio 83.
- His maternal brother was selected from the 2014 sale offering by Roger Hinker, Forestburg SD at \$5500 while another brother was chosen by Jerome Nelson, Lake Preston SD at \$3750 in 2018.
- Sired by CB Block Party 156, the \$13,000 Jud Baldrige and Woodhill Farms sire. After 7 calf crops, he has enhanced his growth EPDs and \$values ranking in the top 10% or better for SC, Doc, Milk, CW, RE, Fat and \$YG.

Lot 24 Pecks Timeless 780

Born: 03/26/17		19281127		Tattoo: 780		Bull	
WMR Timeless 458 #				Leachman Right Time 338-5605 #+			
Montana Timeless 426 SF *				WMR Blackcap 521			
17882038 SF Barbara 033				S A V Final Answer 0035 #*			
Hoover CC&7 H421 *				SF Barbara 819 #+			
Ms Pecks Edella 334				SydGen C C & 7 #*			
17879824 Ms Pecks Alliance Edella7206				Miss Blackcap Ellston F500 #			
				WAR Alliance 9126 6006 #			
				Dahls Edella 348			

CED	BW	WW	YW	SC	DOC	HP	CEM	Milk
-1	+4.0	+71	+112	+0.97	+29	+15.2	+6	+30
CW	Marb	RE	FAT	HD 50K		\$W	\$B	
+51	.39	+.07 .35	+.54 .35	+.010	.33	+66.36	+131.32	

- Individual Performance: BW 86 lbs, 205 Wt. 845 lbs, WWR 118, 365 Wt. 1304 lbs. YWR 113.
- Dam's Production: NR 1@118, YR 1@113. RE 1@102.
- Adjusted Ultrasound Scan Data: %IMF 3.62, REA 12.5, Ratio 102, Rib Fat .32, Rump Fat .35.
- This performance standout posted a moderate birth weight then bested his contemporaries with the #2 heaviest 205-day wt and the #4 heaviest 365-day wt. in the sale offering. Moreover, he ranks #2 for WW EPD and #1 in the sale for \$W value.

Lot 23 Pecks Upward 533 777

Born: 03/25/17		*19281145		Tattoo: 777		Bull	
Sitz Upward 307R #				Connealy Onward #*			
Montana Upward 533 SF *				Sitz Henrietta Pride 81M			
18191275 SF Miss 3437 +*				Connealy Consensus 7229 #*			
CAV Brilliance 618-2618				SF Miss 975 +*			
Ms Pecks Stats 472				S A V Brilliance 8077 #*			
19153443 Miss Pecks New Design 107				Gannon Lassie F618			
				G A R New Design 5050 #+			
				Ms Pecks Regulator Flash6241			

CED	BW	WW	YW	SC	DOC	HP	CEM	Milk
+10	-1.5	+46	+81	+0.20	+15	+11.0	+7	+25
CW	Marb	RE	FAT	HD 50K		\$W	\$B	
+47	.37	+.21 .32	+.50 .33	+.001	.29	+52.27	+127.12	

- Individual Performance: BW 77 lbs, BWR 94, 205 Wt. 811 lbs, WWR 103, 365 Wt. 1144 lbs. YWR 102.
- Dam's Production: BR 1@94, NR 1@103, YR 1@102.
- Actual Ultrasound Scan Data: %IMF 3.27, REA 13.6, Rib Fat .17, Rump Fat .23.
- This calving ease prospect ranks in the breed's top 20% for CED and top 5% for BW EPD. In fact, he shares the #1 lowest BW EPD in the sale offering.
- **Recommended for heifers or cows.**

Lot 24
#2 WW EPD
and
#1 \$W Value
in the sale

Peckenpaugh Angus Two Year Old Bulls



Pecks 250 781

Lot 25



Pecks H421 632

Maternal brother to Lot 25
selected by VV Farms, SD

Lot 25 Pecks 250 781

Born:	Pending	Tattoo:	Bull
03/26/17		781	
Hoover CC&7 H421	SydGen C C & 7 #*		
Pecks CC&7 H421 250	Miss Blackcap Ellston F500 #		
17388853 Ms Pecks 6BT2 Edella 930	Sinclair IN Time 6BT2		
	Dahls Edella 348		
Sinclair Added Value 6PV 31	Sinclair Net Present Value #+*		
Ms Pecks Pride 0129	Sinclair Queen M 05A13 1Z13		
18432239 Ms Pecks Pride 802	WAR Alliance 9126 6006 #		
	Ms PecksVRD Pride 5203		



Sire's EPDs														
CED	BW	WW	YW	SC	DOC	HP	CEM	Milk	CW	MB	RE	FAT	\$W	\$B
+4	+1.6	+62	+111	+1.20	+26	+13.8	+7	+28	+47	+1.14	+3.4	+0.009	+57.61	133.11

- Individual Performance: BW 87lbs, BWR 96, 205 Wt. 729 lbs, WWR 98, 365 Wt. 1206 lbs. YWR 99.
- Dam's Production: BR 3@100, NR 3@102, YR 3@100. Calving Interval: 4@364 days.
- Adjusted Ultrasound Scan Data: %IMF 3.07, REA 11.7, Rib Fat .20, Ratio 83, Rump Fat .15, Ratio 68.
- His 3/4 brother was the \$11,000 top-selling, herd sire acquisition of Peckenpaugh Ranch, Carthage SD from the 2017 sale offering. Another brother was the \$4250 choice of Lyle and Louise Vander Vorste, Pollock SD in 2018
- He recorded the #5 highest \$B value in the sale offering.

Lot 26 Pecks 250 784

Born:	19281122	Tattoo:	Bull
03/27/17		784	
Hoover CC&7 H421 *	SydGen C C & 7 #**		
Pecks CC&7 H421 250	Miss Blackcap Ellston F500 #		
17388853 Ms Pecks 6BT2 Edella 930	Sinclair IN Time 6BT2		
	Dahls Edella 348		
Sinclair IN Time 6BT2	BT Right Time 24J #+		
Ms Pecks Blackbird 846	N Bar Emmaline J4621 #		
16265174 Ms Pecks VRD Traveler 4306 #	A A Right Line 235		
	Roth Blackbird 0260		

CED	BW	WW	YW	SC	DOC	HP	CEM	Milk
+4	+1.8	+54	+104	+0.38	+20	+9.5	+8	+22

- Individual Performance: BW 89 lbs, 205 Wt. 758 lbs, WWR 106, 365 Wt. 1252 lbs. YWR 109.
- Dam's Production: BR 6@97, NR 6@98, YR 4@100. IMF 3@125, RE 3@106.
- Adjusted Ultrasound Scan Data: %IMF 4.22, Ratio 114, REA 13.3, Ratio 109, Rib Fat .19, Ratio 83, Rump Fat .30.
- His maternal brother was chosen by Ryan Olson, Artesian SD in 2018 at \$5000 while another was selected by John Karlen, Howard SD from the 2017 sale offering.
- This bull has a tremendous individual performance portfolio and is the #5 highest \$B value bull in the offering.

Lot 27 Pecks 250 785

Born:	19281121	Tattoo:	Bull
03/30/17		785	
Hoover CC&7 H421 *	SydGen C C & 7 #**		
Pecks CC&7 H421 250	Miss Blackcap Ellston F500 #		
17388853 Ms Pecks 6BT2 Edella 930	Sinclair IN Time 6BT2		
	Dahls Edella 348		
KMD Alliance 780	Sitz Alliance 6595 #		
Ms Pecks Rita 0130	D C C Miss High Point 861		
18086115 Sik's Fame 7981	S A F Fame #		
	Siks Ext 798		

CED	BW	WW	YW	SC	DOC	HP	CEM	Milk
+2	+1.2	+38	+63	+0.94	+21	+9.4	+11	+23

- Individual Performance: BW 86 lbs, BWR 95, 205 Wt. 717 lbs, WWR 97, 365 Wt. 1119 lbs. YWR 92.
- Dam's Production: BR 2@95, NR 2@95. IMF 3@105.
- Adjusted Ultrasound Scan Data: %IMF 4.20, Ratio 121, REA 11.3, Rib Fat .27, Rump Fat .27.
- Rod Kretchmer, Cavour SD made a herd sire out of his maternal brother when he bid \$6000 in the 2018 sale. William Rydbom, DeSmet SD selected his maternal brother from the 2016 sale offering at \$5250.



Pecks 250 693

Maternal brother to Lot 27
selected by Rod Kretchmer, SD

Pecks Electrify 5144

Maternal brother to Lot 26
now serving the
John Karlen herd in SD



Peckenpaugh Angus Two Year Old Bulls



Dam of Lot 29

Lot 29 Pecks Timeless 790

Born: 03/31/17 ***19281140** **Tattoo:** 790 **Bull**

WMR Timeless 458 #
Montana Timeless 426 SF *
 17882038 SF Barbara 033

Plattemere Weigh Up K360 *
Deer Valley Primrose 2260
 17234941 Deer Valley Primrose 9289 +

Leachman Right Time 338-5605 #+
 WMR Blackcap 521
 S A V Final Answer 0035 **
 SF Barbara 819 #+
 Sitz Upward 307R #
 Barbara of Plattemere 337 #
 G A R Ultimate #
 Roth Primrose 1247 +

CED	BW	WW	YW	SC	DOC	HP	CEM	Milk	
-1	+3.6	+73	+122	+1.32	+30	+8.5	+8	+24	
CW	Marb	RE	FAT	HD 50K		\$W	\$B		
+68	.41	+.59	.37	+.72	.37	+.000	.34	+64.20	+174.62

- Individual Performance: BW 96 lbs, 205 Wt. 838 lbs, WWR 117, 365 Wt. 1294 lbs. YWR 112.
- Dam's Production: NR 3@106, YR 3@107. IMF 2@116, RE 2@109, Rib Fat 2@57, Rump Fat 2@71. Calving Interval 4@369 days.
- Adjusted Ultrasound Scan Data: %IMF 4.19, Ratio 113, REA 12.6, Ratio 103, Rib Fat .17, Ratio 74, Rump Fat .17, Ratio 71.
- Marty Neugebauer, Dimock SD selected his maternal brother from the 2018 auction at \$4750, while John Karlen, Howard SD chose a brother in 2016 at \$6750.
- His dam was Deer Valley's lead-off heifer, in their lead off pen at the 2013 National Western Foundation Female Sale where she commanded a \$7250 price. His third dam is a direct daughter of legendary N Bar Primrose 2424, \$100,000 dam of "EXT".
- His outstanding individual performance is complemented with the #1 WW EPD, #2 \$W value and #1 \$B value in the sale offering.



Lot 30 Pecks Timeless 794

Born: 04/02/17 ***19281129** **Tattoo:** 794 **Bull**

WMR Timeless 458 #
Montana Timeless 426 SF *
 17882038 SF Barbara 033

Hoover CC&7 H421 *
MS Pecks Wix 409
 18227635 Fortunes Miss Wix 702 +

Leachman Right Time 338-5605 #+
 WMR Blackcap 521
 S A V Final Answer 0035 **
 SF Barbara 819 #+
 SydGen C C & 7 **
 Miss Blackcap Ellston F500 #
 S A V 004 Traveler 4412 +
 Miss Wix 2021 HC Mc Cumber +

CED	BW	WW	YW	SC	DOC	HP	CEM	Milk	
+7	+1.4	+48	+78	+2.11	+30	+12.4	+8	+32	
CW	Marb	RE	FAT	HD 50K		\$W	\$B		
+23	.39	+.01	.35	+.26	.35	+.025	.33	+56.49	+61.41

- Individual Performance: BW 83 lbs, 205 Wt. 720 lbs, WWR 100, 365 Wt. 1099 lbs. YWR 95.
- Dam's Production: BR 2@91, NR 2@100, YR 2@98. Calving Interval 2@351 days.
- Adjusted Ultrasound Scan Data: %IMF 3.67, REA 10.1, Rib Fat .26, Rump Fat .27.
- His paternal grandsire, WMR Timeless 458 is an Accelerated Genetics feature that is a growth, muscle and power sire. He topped the Wheeler Mountain Angus Bull Sale at \$32,000 2/3 interest.
- **Recommended for heifers or cows.**

Pecks Timeless 790

Lot 29



Pecks H421 605
 Maternal brother to Lot 29
 selected by Marty Neugebauer, SD

Pecks Timeless 794

Lot 30



Pecks Timeless 426 614
 \$7500 Top-selling bull of 2018 and 3/4 brother to Lot 30

Peckenpaugh Angus Two Year Old Bulls



Pecks Upward 797

Lot 31



Pecks H421 650

Maternal brother to Lot 32
selected by Rod Kretchmer, SD

Lot 31 Pecks Upward 797

Born:	Commercial	Tattoo:	Bull
04/03/17		797	
Sitz Upward 307R #		Connealy Onward #*	
Montana Upward 533 SF *		Sitz Henrietta Pride 81M	
18191275 SF Miss 3437 +*		Connealy Consensus 7229 #*	
		SF Miss 975 +*	
Pecks VRD 967		Vermilion Dateline 7078 #	
Commercial Angus Cow		Sik Blueblood Lady 37376	

Sire's EPDs														
CED	BW	WW	YW	SC	DOC	HP	CEM	Milk	CW	MB	RE	FAT	\$W	\$B
+10	-1.8	+57	+96	+36	+17	+14.6	+6	+24	+47	+6.8	+7.0	+0.10	+66.67	+149.20

- Individual Performance: BW 86lbs, 205 Wt. 650 lbs, 365 Wt. 1190 lbs.
- Actual Ultrasound Scan Data: %IMF 4.64, REA 12.4, Rib Fat .22, Rump Fat .23.
- His sire was Tony Peckenpaugh's \$13,000 2/3 interest choice from the 2016 Montana Ranch Bull Sale where he reported individual performance of BW 74 lbs, BWR 99, WW 765 lbs, WWR 116, YW 1171 lbs, YWR 104, IMF 5.38%, IMF ratio 126, RE 14.1" and RE ratio 103.
- Sells Commercial.

Lot 32 Pecks Timeless 799

Born:	19281120	Tattoo:	Bull
04/03/17		799	
WMR Timeless 458 #		Leachman Right Time 338-5605 #+	
Montana Timeless 426 SF *		WMR Blackcap 521	
17882038 SF Barbara 033		S A V Final Answer 0035 #*	
		SF Barbara 819 #+	
Riverbend Mile High 3718 #*		Bon View New Design 1407 #	
Carlson MH 432 F Lady 631		G A R Precision 1919 #+	
15499031 Carlson 0016 Forever Lady432 +		C A Future Direction 5321 #	
		S A F Forever Lady 0016 +	

CED	BW	WW	YW	SC	DOC	HP	CEM	Milk	
+6	+2.4	+39	+63	+0.47	+18	+10.9	+8	+31	
CW		Marb		RE		FAT		\$W	\$B
+26 .40		+.48 .36		+.55 .37		+.029 .34		+41.24	+96.14

- Individual Performance: BW 87 lbs, 205 Wt. 680 lbs, WWR 95, 365 Wt. 1102 lbs. YWR 96.
- Dam's Production: BR 5@94, NR 7@103, YR 7@100. IMF 6@107, RE 6@100, Rib Fat 6@98, Rump Fat 6@99.
- Adjusted Ultrasound Scan Data: %IMF 3.55, REA 11.6, Rib Fat .21, Ratio 91, Rump Fat .19, Ratio 79.
- Maternal brothers include the herd sire selections of Rod Kretchmer, Cavour SD at \$4750, Jeffrey Gruenhagen, DeSmet SD at \$4250 and Kotton Krull, Chamberlain SD at \$5500.
- His dam has had four consecutive sons born in the Brice Conover herd that sold to Iowa buyers through the Iowa Angus Association Performance Bull Test.

Lot 33 Pecks Sunrise 7103

Born:	19281108	Tattoo:	Bull
04/06/17		7103	
MCC Daybreak #		Boyd New Day 8005 #+	
Leachman Sunrise A144Z +*		MCC Miss Focus 134 #	
17443461 Tehama Elite Blackbird K620		Larks Canyon 74D4 #	
		T Elite Blackbird Y764 #	
		N Bar Emulation EXT #*	
G A R Exaltation 3144 #+		G A R Scotch Cap 309 +	
Ms Pecks Blackcap Ann 821		Beaver Ultra 2296 S D G +	
16376080 Dahls Blackcap Ann 98		Blackcap Ann 439 D A F	

CED	BW	WW	YW	SC	DOC	HP	CEM	Milk	
+1	+4.1	+59	+100	+0.08	+17	+10.0	+7	+18	
CW		Marb		RE		FAT		\$W	\$B
+38 .39		+.20 .35		+.75 .35		-.037 .33		+37.93	+114.49

- Individual Performance: BW 92 lbs, 205 Wt. 789 lbs, WWR 110, 365 Wt. 1242 lbs. YWR 108.
- Dam's Production: BR 3@94, NR 3@100, YR 2@105. RE 2@103, Rump Fat 2@94.
- Adjusted Ultrasound Scan Data: %IMF 3.00, REA 13.4, Ratio 110, Rib Fat .15, Ratio 65, Rump Fat .24, Ratio 100.
- His dam has had six consecutive registered sons.
- He shares the #4 largest ribeye area in the sale offering.

Lot 34 Pecks Sunrise 7107

Born:	19281148	Tattoo:	Bull
04/07/17		7107	
MCC Daybreak #		Boyd New Day 8005 #+	
Leachman Sunrise A144Z +*		MCC Miss Focus 134 #	
17443461 Tehama Elite Blackbird K620		Larks Canyon 74D4 #	
		T Elite Blackbird Y764 #	
		Sinclair Net Present Value #**	
Sinclair Added Value 6PV31		Sinclair Queen M 05A3 1Z13	
Ms Pecks blackcap Ann 984		Vermilion Dateline 7078 #	
16598355 Ms Pecks Blackcap Ann 7205		Dahls Blackcap Ann 98	

CED	BW	WW	YW	SC	DOC	HP	CEM	Milk	
+10	+0.5	+39	+70	+1.10	+19	+8.4	+15	+20	
CW		Marb		RE		FAT		\$W	\$B
+23 .41		+.08 .37		+.45 .37		+.003 .34		+35.78	+67.14

- Individual Performance: BW 81 lbs, BWR 95, 205 Wt. 646 lbs, WWR 90, 365 Wt. 1092 lbs. YWR 95.
- Dam's Production: NR 2@96, YR 1@95.
- Adjusted Ultrasound Scan Data: %IMF 2.62, REA 11.2, Rib Fat .20, Ratio 87, Rump Fat .26.
- He posts a double-digit CED EPD ranking in the top 20% of the breed for the trait.
- Recommended for heifers or cows.

Peckenpaugh Angus Two Year Old Bulls



Pecks H421 555
Maternal brother to Lot 36
Selected by Jerome Nelson, SD

Lot
35 Pecks 250 7111

Born:	19281115	Tattoo:	7111	Bull
Hoover CC&7 H421 *	SydGen C C & 7 **			
Pecks CC&7 H421 250	Miss Blackcap Ellston F500 #			
17388853 Ms Pecks 6BT2 Edella 930	Sinclair IN Time 6BT2			
	Dahls Edella 348			
	S A V 8180 Traveler 004 #			
S A V Net Worth 4200 #	S A V May 2410 +			
Ms Pecks Pride 208	Foxs Stockman 129			
17388836 Ms Pecks EXT Stockman 3305	Ms Pecks EXT Rancher 01 PA			

CED	BW	WW	YW	SC	DOC	HP	CEM	Milk	
+11	-1.0	+50	+86	I+1.06	+16	I+11.0	+12	+22	
CW		Marb		RE		FAT		\$W	\$B
+33 .22		+.35 .17		+.32 .21		+.014 .19		+47.26	+110.22

- Individual Performance: BW 60 lbs, BWR 71, 205 Wt. 665 lbs, WWR 93, 365 Wt. 1094 lbs, YWR 95.
- Dam's Production: BR 2@88, NR 2@96, YR 2@97. IMF 2@128, Rib Fat 2@98, Rump Fat 2@97.
- Adjusted Ultrasound Scan Data: %IMF 4.32, Ratio 117, REA 11.9, Rib Fat .22, Ratio 96, Rump Fat .25.
- His dam recorded individual performance featuring a BW 84 lbs, WW 626 lbs, WWR 112.
- He recorded the #3 highest CED and #3 lowest BW EPD in the sale offering ranking in the top 15% and top 10% of the breed for CED and BW respectively.
- Recommended for heifers or cows.**

Lot
36 Pecks Electrify 7112

Born:	19281146	Tattoo:	7112	Bull
Hoover Electrify	Basin Excitement #*			
Hoover Electrify M34	Blkcp Empress Ellston D241			
17603593 Elbamere Queen Ellston J10	SydGen C C & 7 **			
	Elbamere Queen S36 #			
	WK Gunsmoke #			
B A Gunsmoke Y014	Hi Sky Velvet Touch			
Ms Pecks Gunsmoke Stats 6216	QLC Stats 060J			
15494307 Roth Miss Stats 0188	Bushs Miss Rainmaker 661			

CED	BW	WW	YW	SC	DOC	HP	CEM	Milk	
-3	+2.8	+46	+92	+0.65	+23	+15.2	+4	+21	
CW		Marb		RE		FAT		\$W	\$B
+26 .39		-.11 .35		+.62 .35		-.045 .32		+29.41	+79.28

- Individual Performance: BW 87 lbs, 205 Wt. 717 lbs, WWR 100, 365 Wt. 1219 lbs, YWR 106.
- Dam's Production: BR 9@99, NR 9@102, YR 3@105. RE 5@103, Rump Fat 5@95. Adjusted Ultrasound Scan Data: %IMF 3.62, REA 12.0, Rib Fat .25, Rump Fat .22, Ratio 92.
- His maternal brother was the herd sire selection of Jerome Nelson, Lake Preston SD from the 2017 offering.
- His maternal sister is the dam of the lot 10 bull in this offering.



Pecks Electrify 564
Maternal brother to Lot 37
Selected by Peckenpaugh Ranch, SD

Lot
37 Pecks Electrify 7115

Born:	19281119	Tattoo:	7115	Bull
Hoover Electrify	Basin Excitement #*			
Hoover Electrify M34	Blkcp Empress Ellston D241			
17603593 Elbamere Queen Ellston J10	SydGen C C & 7 **			
	Elbamere Queen S36 #			
	Bon View New Design 878 #			
Dahls New Design 15	Dahls Queen 429			
Dahls Enchantress 498	N Bar Emulation EXT #**			
14877061 Dahls Enchantress 428	Enchantress 511 D A F			

CED	BW	WW	YW	SC	DOC	HP	CEM	Milk	
-1	+2.5	+44	+74	+1.46	+19	+10.2	+9	+19	
CW		Marb		RE		FAT		\$W	\$B
+20 .37		+.00 .33		+.47 .34		-.017 .31		+36.07	+72.15

- Individual Performance: BW 85 lbs, 205 Wt. 675 lbs, WWR 94, 365 Wt. 1139 lbs, YWR 99.
- Dam's Production: BR 10@99, NR 10@101, YR 4@99. RE 5@102, Rib Fat 5@89, Rump Fat 5@94. Calving Interval 11@365 days.
- Adjusted Ultrasound Scan Data: %IMF 3.37, REA 12.1, Rib Fat .23, Ratio 100, Rump Fat .12, Ratio 50.
- His maternal brother posted a WWR 115, YWR 106 and IMF ratio 110 and was chosen by HT Albrecht, DeSmet SD. Another brother was the \$5000 calving ease selection of Peckenpaugh Ranch, Carthage SD.

Lot
38 Pecks Upward 533 7124

Born:	19281144	Tattoo:	7124	Bull
Sitz Upward 307R #	Connealy Onward #*			
Montana Upward 533 SF *	Sitz Henrietta Pride 81M			
18191275 SF Miss 3437 +*	Connealy Consensus 7229 #*			
	SF Miss 975 +*			
	S A V Brilliance 8077 #**			
CAV Brilliance 618-2618	Gannon Lassie F618			
Ms Pecks Lady 466	S A V Net Worth 4200 #			
19096487 Ms Pecks Lady 116	Ms Pecks Lady 807 #			

CED	BW	WW	YW	SC	DOC	HP	CEM	Milk	
+7	+0.8	+39	+72	+1.33	+27	+13.2	+6	+26	
CW		Marb		RE		FAT		\$W	\$B
+33 .37		+.45 .33		+.60 .33		-.007 .31		+35.90	+113.79

- Individual Performance: BW 85 lbs, 205 Wt. 665 lbs, WWR 93, 365 Wt. 1076 lbs, YWR 94.
- Dam's Production: IMF 1@114, RE 1@101, Rib Fat 1@78, Rump Fat 1@96.
- Adjusted Ultrasound Scan Data: %IMF 4.23, Ratio 114, REA 12.3, Ratio 101, Rib Fat .18, Ratio 78, Rump Fat .23, Ratio 96.
- Note his astounding yearling ultrasound measures with ratios of IMF 114, RE 101, Rib Fat 78 and Rump Fat 96 with 50 contemporaries.
- Recommended for heifers or cows.**

Peckenpaugh Angus Two Year Old Bulls



Pecks Electrify 7125

Lot 39

**Lot 42
#1 IMF
Measurement
in the sale
Offering**

Lot 39 Pecks Electrify 7125

Born: 04/15/17	19281118	Tattoo: 7125	Bull
Hoover Electrify Hoover Electrify M34 17603593 Elbamere Queen Ellston J10	Basin Excitement #* Blkcp Empress Ellston D241 SydGen C C & 7 #* Elbamere Queen S36 # Connealy Timeline #		
Connealy Danny Boy # Ms Pecks Pride 809 # 16340694 Pride of P A F 724	Energy of Conanga 4851 Bon View Bando 504 Nichols Pride W26 #		

CED	BW	WW	YW	SC	DOC	HP	CEM	Milk	
+6	+0.2	+47	+80	+0.33	+25	+15.3	+1	+20	
CW	Marb	RE	FAT	\$W	\$B				
+25	.36	+.19	.32	+.53	.33	-.034	.30	+41.59	+83.92

- Individual Performance: BW 80 lbs, BWR 94, 205 Wt. 721 lbs, WWR 101, 365 Wt. 1151 lbs. YWR 100.
- Dam's Production: NR 6@104, YR 5@102. IMF 4@100, RE 4@104, Rib Fat 4@97, Rump Fat 4@83.
- Adjusted Ultrasound Scan Data: %IMF 3.96, Ratio 107, REA 11.8, Rib Fat .24, Rump Fat .16, Ratio 67.
- His Pathfinder dam by Connealy Danny Boy produced an \$8000 highlight of the 2016 sale selected by Kurt Hoffman, Dell Rapids SD; a 2014 sale feature also chosen by Hoffman at \$4500 and the lead-off Lot 1 bull of the 2013 sale selected by Jeff Hinker, Forestburg SD.
- **Recommended for heifers or cows.**

Lot 40 Pecks Electrify 7126

Born: 04/14/17	19281111	Tattoo: 7126	Bull
Hoover Electrify Hoover Electrify M34 17603593 Elbamere Queen Ellston J10	Basin Excitement #* Blkcp Empress Ellston D241 SydGen C C & 7 #* Elbamere Queen S36 # S A F 598 Bando 5175 #+ Mill Coulee Barbara K 323 # R/M Ultra Cash Flow 102* Siks Rancher 3737		
LT 598 Bando 9074 # Ms Pecks Blueblood Lady 212 17389803 Sik Blueblood Lady 37376			

CED	BW	WW	YW	SC	DOC	HP	CEM	Milk	
+6	+0.6	+56	+101	+0.68	+24	+13.6	+6	+23	
CW	Marb	RE	FAT	\$W	\$B				
+38	.39	+.17	.35	+.61	.36	+.001	.33	+53.52	+128.93

- Individual Performance: BW 83 lbs, BWR 98, 205 Wt. 626 lbs, WWR 87, 365 Wt. 1072 lbs. YWR 93.
- Dam's Production: BR 2@97, NR 2@95.
- Adjusted Ultrasound Scan Data: %IMF 3.40, REA 12.1, Rib Fat .13, Ratio 57, Rump Fat .16, Ratio 67.
- His dam was a standout on ultrasound day, when she recorded an individual IMF of 8.34% to ratio 141.
- **Recommended for heifers or cows.**

Lot 41 Pecks Sunrise 7129

Born: 04/16/17	19281123	Tattoo: 7129	Bull
MCC Daybreak # Leachman Sunrise A144Z +* 17443461 Tehama Elite Blackbird K620	Boyd New Day 8005 #+ MCC Miss Focus 134 # Larks Canyon 74D4 # T Elite Blackbird Y764 # SydGen C C & 7 #* Miss Blackcap Ellston F500 # BT Right Time 24J #+ Dahls Blackcap Ann 98		
Hoover CC&7 H421* Ms Pecks Blackcap Ann 392 17879822 Ms Pecks Blackcap Ann 019			

CED	BW	WW	YW	SC	DOC	HP	CEM	Milk	
+8	+2.0	+68	+111	+1.23	+25	+11.2	+13	+17	
CW	Marb	RE	FAT	\$W	\$B				
+41	.37	+.20	.33	+.84	.34	-.028	.31	+56.88	+119.34

- Individual Performance: BW 86 lbs, 205 Wt. 740 lbs, WWR 103, 365 Wt. 1198 lbs. YWR 104.
- Dam's Production: NR 1@103, YR 1@104. IMF 1@107, RE 1@106, Rump Fat 1@83. Adjusted Ultrasound Scan Data: %IMF 3.97, Ratio 107, REA 12.9, Ratio 106, Rib Fat .26, Rump Fat .20, Ratio 83.
- He posted the #4 highest WW EPD in the sale offering ranking in the top 10% for the trait, as well as the top 20% for YW EPD.

Lot 42 Pecks Electrify 7134

Born: 04/16/17	19281117	Tattoo: 7134	Bull
Hoover Electrify Hoover Electrify M34 17603593 Elbamere Queen Ellston J10	Basin Excitement #* Blkcp Empress Ellston D241 SydGen C C & 7 #* Elbamere Queen S36 # Baldrige Kaboom K243 KCF # Parka of Conanga 241 # MOGCK Whispering Wind 346 Sik Elbance 23036		
Connealy Thunder # Ms Pecks Elbance 331 19114807 Sik Elbance 230368			

CED	BW	WW	YW	SC	DOC	HP	CEM	Milk	
+1	+2.6	+48	+103	+1.31	+35	+9.5	+1	+23	
CW	Marb	RE	FAT	\$W	\$B				
+41	.38	+.65	.34	+.43	.35	-.018	.32	+30.42	+138.79

- Individual Performance: BW 88 lbs, 205 Wt. 685 lbs, WWR 96, 365 Wt. 1162 lbs. YWR 101.
- Dam's Production: NR 1@96, YR 1@101. IMF 1@143, RE 1@101, Rump Fat 1@96. Adjusted Ultrasound Scan Data: %IMF 6.76, Ratio 143, REA 11.9, Ratio 101, Rib Fat .30, Rump Fat .24, Ratio 96.
- His maternal grandsire, Connealy Thunder was the \$160,000 top seller at the 2006 Connealy Angus Sale and is a sub-zero BW sire that ranks very high for docility, heifer pregnancy and calving ease.
- He posted the #1 IMF measurement in the sale offering with a 6.76% and IMF ratio of 143.

Peckenpaugh Angus Two Year Old Bulls



Pecks Electrify 7132

Lot 43

#1 for Adj Weaning Wt at 870 lbs

Lot 43 Pecks Electrify 7132

Born: 04/16/17 19345227 Tattoo: 7132 Bull

Hoover Electrify
Hoover Electrify M34
 17603593 Elbamere Queen Ellston J10

LaGrand Marathon 8166 +
Ms Pecks Stats 0115
 16861649 Ms Pecks Rightway Flash 7209

Basin Excitement #*
 Blkcp Empress Ellston D241
 SydGen C C & 7 #*
 Elbamere Queen S36 #
 B C Marathon 7022 #
 LCR Precision 202 +
 Hyline Right Way 781 #
 Ms A P Rain Flash 2305

CED	BW	WW	YW	SC	DOC	HP	CEM	Milk	
-2	+4.1	+70	+123	I+.84	+27	I+12.8	+3	+23	
CW		Marb		RE		FAT		\$W	\$B
+63	.21	+07	.16	+69	.20	-.025	.17	+51.95	+159.96

- Individual Performance: BW 93 lbs, 205 Wt. 870 lbs, WWR 121, 365 Wt. 1379 lbs. YWR 119.
- Dam's Production: NR 3@110, YR 1@119. RE 1@103, Rib Fat 1@78, Rump Fat 1@92. Calving Interval 5@365 days.
- Adjusted Ultrasound Scan Data: %IMF 3.09, REA 12.6 Ratio 103, Rib Fat .18, Ratio 78, Rump Fat .22, Ratio 92.
- His dam gained her admittance to the Peckenpaugh breeding program with individual performance that featured a WWR 114.
- This bull recorded the #1 heaviest 205-day wt and the #2 heaviest 365-day wt in the sale offering.

Lot 44 Pecks New Design 501 7136

Born: 04/16/17 19281133 Tattoo: 7136 Bull

BA New Design 316
BA New Design 501
 18346134 BA Lady Legend 356

Vin-Mar O'Reilly Factor #
Ms Pecks Primrose 5103
 19077315 Deer Valley Primrose 2260

Sua New Design 435 RR 9654
 BA RH Lauria 176
 Sua Legend U8404 +
 B A Liza 954
 S A V Final Answer 0035 #*
 Vin-Mar Edella 2827 #
 Plattemere Weigh Up K360 *
 Deer Valley Primrose 9289 +

CED	BW	WW	YW	SC	DOC	HP	CEM	Milk	
+4	+1.8	+60	+101	+0.03	+17	+10.3	+7	+27	
CW		Marb		RE		FAT		\$W	\$B
+53	.37	+23	.33	+58	.33	+0.19	.31	+61.44	+143.33

- Individual Performance: BW 81 lbs, 205 Wt. 769 lbs, WWR 107, 365 Wt. 1190 lbs. YWR 103.
- Dam's Production: NR 1@107, YR 1@103. RE 1@111, Rump Fat 1@100.
- Adjusted Ultrasound Scan Data: %IMF 2.61, REA 13.5, Ratio 111, Rib Fat .25, Rump Fat .24, Ratio 100.
- Born unassisted out of a first-calf heifer.
- This large ribeye bull boasts the #3 highest \$W and the #3 highest \$B value in the sale offering.
- His dam is a maternal sister to the lot 29 bull descending from the \$7250 alumni of the 2013 NWFFS Deer Valley Primrose 2260.



Pecks New Design 501 7136

Lot 44



Deer Valley Primrose 2260
 Grandam of Lot 44

Peckenpaugh Angus Two Year Old Bulls



Lot

45 Pecks Timeless 7141

Born:	19281142	Tattoo:	7141	Bull
WMR Timeless 458 # Montana Timeless 426 SF * 17882038 SF Barbara 033		Leachman Right Time 338-5605 #+ WMR Blackcap 521 S A V Final Answer 0035 #* SF Barbara 819 #+ SydGen C C & 7 #* Miss Blackcap Ellston F500 # Pecks Rightway Fame 7227 Mohnen Coquette Pride 523		
Hoover CC&7 H421 * Ms Pecks Coquette Pride 4111 18678587 Ms Pecks Coquette Pride 072				

CED	BW	WW	YW	SC	DOC	HP	CEM	Milk	
+9	+2.7	+43	+69	+0.82	+20	+12.4	+12	+16	
CW		Marb		RE		FAT		\$W	\$B
+23 .38		+.01 .34		+.19 .34		+.016 .32		+27.96	+66.67

- Individual Performance: BW 84 lbs, 205 Wt. 645 lbs, WWR 90, 365 Wt. 1079 lbs. YWR 94.
- Dam's Production: IMF 1@103, Rib Fat 1@65, Rump Fat 1@96.
- Adjusted Ultrasound Scan Data: %IMF 3.80, Ratio 103, REA 10.9, Rib Fat .15, Ratio 65, Rump Fat .23, Ratio 96.
- The mating of Montana Timeless 426 SF X "H421" daughters has been repeated throughout this sale offering, as it should. This mating produced the top-selling bull of the 2018 event.

Lot

46 Pecks Electrify 7148

Born:	19281125	Tattoo:	7148	Bull
Hoover Electrify Hoover Electrify M34 17603593 Elbamere Queen Ellston J10		Basin Excitement #* Blkcp Empress Ellston D241 SydGen C C & 7 #* Elbamere Queen S36 # BT Right Time 24J #+ N Bar Emmaline J4621 # B A R Ext Traveler 205 # Larkota Lady 1155 #		
Sinclair IN Time 6BT2 Ms Pecks Lady 974 16598349 Larkota Lady 309				

CED	BW	WW	YW	SC	DOC	HP	CEM	Milk	
+7	-0.6	+45	+79	+0.54	+15	+13.3	+5	+20	
CW		Marb		RE		FAT		\$W	\$B
+20 .39		+.12 .35		+.59 .35		-.031 .33		+43.33	+81.63

- Individual Performance: BW 84 lbs, BWR 99, 205 Wt. 738 lbs, WWR 103, 365 Wt. 1189 lbs. YWR 103.
- Dam's Production: BR 5@100, NR 5@101, YR 4@100. IMF 5@111.
- Adjusted Ultrasound Scan Data: %IMF 4.32, Ratio 117, REA 12.5, Ratio 102, Rib Fat .27, Rump Fat .19, Ratio 79.
- His full brother was the herd sire selection of Jeffery Gruenhagen, DeSmet, SD in 2017, while maternal brothers have been chosen by Jason Clark, Howard SD and Davis Dvorak, Scotland SD in the 2015 and 2014 sales.
- **Recommended for heifers or cows.**

Pecks Electrify 7148

Lot 46



Pecks Thunder 350

\$7500 maternal brother to Lot 46
selected by Jason Clark, SD

Lot

47 Pecks 250 7160

Born:	19281112	Tattoo:	7160	Bull
Hoover CC&7 H421 * Pecks CC&7 H421 250 17388853 Ms Pecks 6BT2 Edella 930		SydGen C C & 7 #* Miss Blackcap Ellston F500 # Sinclair IN Time 6BT2 Dahls Edella 348 B/R New Design 036 # White Fence Pride H1 A A Right Line 235 Pride of P A F 724		
B/R New Frontier 095 #+ Ms Pecks Pride 035 16861638 Ms PecksVRD Pride 5203				

CED	BW	WW	YW	SC	DOC	HP	CEM	Milk	
+4	+2.2	+60	+100	+1.57	+20	+13.7	+7	+24	
CW		Marb		RE		FAT		\$W	\$B
+44 .37		+.63 .33		+.05 .34		+.003 .31		+56.03	+136.91

- Individual Performance: BW 83 lbs, BWR 98, 205 Wt. 766 lbs, WWR 107, 365 Wt. 1219 lbs. YWR 106.
- Dam's Production: BR 3@99, NR 3@104, YR 3@103. IMF 3@105, Rump Fat 3@89. Calving Interval 4@372 days.
- Adjusted Ultrasound Scan Data: %IMF 4.30, Ratio 116, REA 11.0, Rib Fat .28, Rump Fat .21, Ratio 88.
- His dam was a standout in her contemporary group where she posted individual performance of BWR 97 and WWR 108.
- His full brother was the \$5250 choice of Peckenpaugh Ranch, Carthage SD from the 2018 sale offering, while Bill & Steve Albrecht, DeSmet SD selected a maternal brother in 2016 at \$5500.

Lot

48 Pecks Timeless 7161

Born:	19281139	Tattoo:	7161	Bull
WMR Timeless 458 # Montana Timeless 426 SF * 17882038 SF Barbara 033		Leachman Right Time 338-5605 #+ WMR Blackcap 521 S A V Final Answer 0035 #* SF Barbara 819 #+ MCC Daybreak # Tehama Elite Blackbird K620 Sinclair Added Value 6PV31 Ms Peck Pride 802		
Leachman Sunrise A144Z #* Ms Pecks Pride 459 19075130 Ms Pecks Pride 0129				

CED	BW	WW	YW	SC	DOC	HP	CEM	Milk	
+9	+1.7	+52	+85	+1.23	+31	+9.7	+16	+26	
CW		Marb		RE		FAT		\$W	\$B
+44 .39		+.41 .35		+.53 .35		+.022 .33		+51.89	+113.86

- Individual Performance: BW 81 lbs, BWR 99, 205 Wt. 688 lbs, WWR 96, 365 Wt. 1078 lbs. YWR 94.
- Dam's Production: BR 1@99, NR 1@96.
- Adjusted Ultrasound Scan Data: %IMF 3.28, REA 12.0, Rib Fat .21, Ratio 91, Rump Fat .22, Ratio 92.
- **Recommended for heifers or cows.**

Peckenpaugh Angus Two Year Old Bulls



Lot **49** Pecks Consensus 3012 7167

Born: 04/25/17 *19281134 Tattoo: 7167 Bull

Connealy Consensus 7229 #*
Mra Consensus 3012
 17681367 Mra Lady 1004

Hoover Electrify M34
Ms Pecks Blackcap 557
 18679812 Ms Pecks EXT Rightway 010

Connealy Consensus #*
 Blue Lilly of Conanga 16
 Sitz Dash 10277 #*
 Mra Lady 9017
 Hoover Electrify
 Elbamere Queen Ellston J10
 Hyline Right Way 781 #
 Fortunes 6015 of EXT 110 +

CED	BW	WW	YW	SC	DOC	HP	CEM	Milk		
-6	+4.3	+70	+117	+0.77	+19	+11.2	+1	+14		
CW	Marb	RE	FAT	\$W	\$B					
+46	.38	+40	.34	+58	.34	-0.26	.32	HD 50K	+51.41	+141.37

- Individual Performance: BW 88 lbs, 205 Wt. 796 lbs, WWR 111, 365 Wt. 1247 lbs. YWR 108.
- Dam's Production: NR 1@111, YR 1@108, IMF 1@102, RE 1@107, Rump Fat 1@83.
- Adjusted Ultrasound Scan Data: %IMF 3.78, Ratio 102, REA 13.0, Ratio 107, Rib Fat .28, Rump Fat .20, Ratio 83.
- This top performer stems from a first-calf heifer.
- He posts the #3 highest WW EPD and the #4 highest \$B value in the sale offering.

Lot **50** Pecks Sunrise 7169

Born: 04/28/17 *19281124 Tattoo: 7169 Bull

MCC Daybreak #
Leachman Sunrise A144Z +*
 17443461 Tehama Elite Blackbird K620

Sinclair IN Time 6BT2
Ms Pecks 6BT2 Edella 930
 16595441 Dahls Edella 348

Boyd New Day 8005 #+
 MCC Miss Focus 134 #
 Larks Canyon 74D4 #
 T Elite Blackbird Y764 #
 BT Right Time 24J #+
 N Bar Emmaline J4621 #
 Dahls New Design 15
 Dahls Edella 403

CED	BW	WW	YW	SC	DOC	HP	CEM	Milk		
+9	+1.7	+61	+111	+0.72	+12	+15.8	+10	+24		
CW	Marb	RE	FAT	\$W	\$B					
+55	.38	+19	.34	+61	.34	+0.07	.32	HD 50K	+61.39	+138.84

- Individual Performance: BW 84 lbs, BWR 99, 205 Wt. 823 lbs, WWR 115, 365 Wt. 1263 lbs. YWR 110.
- Dam's Production: NR 3@119, YR 2@115, RE 3@109.
- Adjusted Ultrasound Scan Data: %IMF 2.65, REA 14.0, Ratio 115, Rib Fat .24, Rump Fat .31.
- His only maternal brother recorded a WW 835 lbs, WWR 121, YW 1356 and YWR 119 with IMF and RE ratios of 107 and 103 respectively.
- Similarly, he posted the #5 heaviest adj 205-day wt and the #1 largest ribeye area in the sale offering.
- Recommended for heifers or cows.**

Pecks Electrify 7180

Lot 51



Pecks Sunrise 7169 • Lot 50

Lot **51** Pecks Electrify 7180

Born: 05/05/17 19281110 Tattoo: 7180 Bull

Hoover Electrify
Hoover Electrify M34
 17603593 Elbamere Queen Ellston J10

Connealy Freightliner #
Sik Rita 79818
 16005550 Sik's Fame 7981

Basin Excitement #*
 Blkcp Empress Ellston D241
 SydGen C C & 7 #*
 Elbamere Queen S36 #
 Bon View Bando 598 #
 Joana Erica of Conanga
 S A F Fame #
 Siks Ext 798

CED	BW	WW	YW	SC	DOC	HP	CEM	Milk		
-3	+3.4	+59	+115	+3.19	+27	+14.9	-2	+19		
CW	Marb	RE	FAT	\$W	\$B					
+49	.38	+10	.33	+59	.33	+0.06	.30	HD 50K	+39.21	+129.22

- Individual Performance: BW 87 lbs, 205 Wt. 693 lbs, WWR 97, 365 Wt. 1091 lbs. YWR 97.
- Dam's Production: NR 5@97, YR 2@99.
- Maternal grandsire, Connealy Freightliner is a much-revered Pathfinder sire that remains the #1 Scrotal EPD proven sire in the breed. His daughters are highly sought for their volume, capacity and mothering attributes.

Lot **52** Pecks Electrify 7181

Born: 05/05/17 19281126 Tattoo: 7181 Bull

Hoover Electrify
Hoover Electrify M34
 17603593 Elbamere Queen Ellston J10

KF Right Time 397 +
Ms Pecks Right Time 989
 16598353 MS PecksTC Gunsmoke 5234

Basin Excitement #*
 Blkcp Empress Ellston D241
 SydGen C C & 7 #*
 Elbamere Queen S36 #
 Leachman Right Time #+
 North Fork Primrose 6005 +
 B A Gunsmoke Y014
 Roth Ms Stockman 0199

CED	BW	WW	YW	SC	DOC	HP	CEM	Milk		
+2	+1.0	+37	+70	+0.55	+23	+10.2	+8	+33		
CW	Marb	RE	FAT	\$W	\$B					
+30	.37	-21	.33	+38	.34	+0.25	.31	HD 50K	+38.95	+77.02

- Individual Performance: BW 78 lbs, BWR 92, 205 Wt. 678 lbs, WWR 95, 365 Wt. 1088 lbs. YWR 95.
- Dam's Production: BR 4@100, NR 4@101, YR 2@100, RE 3@102, Rib Fat 3@98.
- Adjusted Ultrasound Scan Data: %IMF 2.68, REA 11.7, Rib Fat .17, Ratio 74, Rump Fat .26.
- His sire, Hoover Electrify M34 gained national attention as the \$24,000 third top-selling bull of the 2014 Hoover Angus sale where he was the 2nd top 205 day wt in his contemporary group of 150 bulls posting a WWR 117.

Peckenpaugh Angus Two Year Old Bulls



Montana Upward 533 SF
Sire of Lots 53, 55, 56, and 57

Lot

55 Pecks Upward 7162

Born: 04/26/17 19333265 Tattoo: 7162 Bull

Sitz Upward 307R #
Montana Upward 533 SF *
18191275 SF Miss 3437 +*

Pecks VRD 967
Ms Pecks Rita 4131
19111591 Ms Pecks Rita 051

Connealy Onward #*
Sitz Henrietta Pride 81M
Connealy Consensus 7229 #*
SF Miss 975 +*
Vermilion Dateline 7078 #
Sik Blueblood Lady 37376
Sinclair Added Value 6PV31
Sik Rita 79818

CED	BW	WW	YW	SC	DOC	HP	CEM	Milk	
+9	-0.5	+47	+79	NA	+7	NA	+9	+19	
CW		Marb		RE		FAT		\$W	\$B
+30 .20		+54 .16		+43 .20		+008 .17		+41.41	+105.86

- Individual Performance: BW 79 lbs, BWR 99, 205 Wt. 669 lbs, WWR 94, 365 Wt. 1090 lbs. YWR 95.
- Dam's Production: BR 1@99, YR 1@95.
- Adjusted Ultrasound Scan Data: %IMF 4.37, REA 11.3, Rib Fat .23, Ratio 88, Rump Fat .20, Ratio 80.
- He ranks in the top 15% for BW EPD among non-parent bulls in the breed.
- **Recommended for heifers or cows.**

Lot

53 Pecks Upward 7199

Born: 04/30/17 19333471 Tattoo: 7199 Bull

Sitz Upward 307R #
Montana Upward 533 SF *
18191275 SF Miss 3437 +*

Pecks VRD 967
Ms Pecks Lady 4108
19111047 Ms Pecks Lady 036

Connealy Onward #*
Sitz Henrietta Pride 81M
Connealy Consensus 7229 #*
SF Miss 975 +*
Vermilion Dateline 7078 #
Sik Blueblood Lady 37376
HARB Pendleton 765 J H #
Ms Pecks Lady 807 #

CED	BW	WW	YW	SC	DOC	HP	CEM	Milk	
I+9	I-2	I+49	I+84	NA	NA	NA	I+9	I+23	
CW		Marb		RE		FAT		\$W	\$B
NA		NA		NA		NA		+45.89	NA

- Individual Performance: BW 85 lbs, BWR 100, 205 Wt. 803 lbs, WWR 100, 365 Wt. 1241 lbs. YWR 100.
- Dam's Production: BR 1@100, NR 1@100, YR 1@100.
- Adjusted Ultrasound Scan Data: %IMF 4.98, Ratio 100, REA 12.3, Ratio 100, Rib Fat .30, Ratio 100, Rump Fat .31, Ratio 100.
- This bull was alone in a contemporary group. His 800+ lb 205 wt and 1241 lb 365 wt speaks volumes about his growth rate.
- He ranks in the top 20% of the breed for BW EPD.
- **Recommended for heifers or cows.**

Lot

56 Pecks Upward 7187

Born: 05/09/17 19340577 Tattoo: 7187 Bull

Sitz Upward 307R #
Montana Upward 533 SF *
18191275 SF Miss 3437 +*

Pecks VRD 967
Ms Pecks Blacklass 4133
19144444 Ms Pecks GS In Focus 7235

Connealy Onward #*
Sitz Henrietta Pride 81M
Connealy Consensus 7229 #*
SF Miss 975 +*
Vermilion Dateline 7078 #
Sik Blueblood Lady 37376
Mytty In Focus #*
MS PecksTC Gunsmoke 5234

Sire's EPDs														
CED	BW	WW	YW	SC	DOC	HP	CEM	Milk	CW	MB	RE	FAT	\$W	\$B
+10	-1.8	+57	+96	+36	+17	+14.6	+6	+24	+47	+6.8	+7.0	+0.10	+66.67	+149.20
Dam's EPDs														
CED	BW	WW	YW	SC	DOC	HP	CEM	Milk	CW	MB	RE	FAT	\$W	\$B
I+7	I+1.8	I+47	I+81	I+87	I+21	I+7.6	I+11	I+16	I+20	I+6.7	I+2.1	I+0.08	+36.52	+90.34

- Individual Performance: BW 84 lbs, BWR 100, 205 Wt. 694 lbs, WWR 100.
- Dam's Production: BR 1@100, NR 1@100.
- Adjusted Ultrasound Scan Data: %IMF 5.09, Ratio 100, REA 12.1, Ratio 100, Rib Fat .24, Ratio 100, Rump Fat .16, Ratio 100.
- His sire was Tony Peckenpaugh's \$13,000 2/3 interest choice from the 2016 Montana Ranch Bull Sale where he reported individual performance of BW 74 lbs, BWR 99, WW 765 lbs, WWR 116, YW 1171 lbs, YWR 104, IMF 5.38%, IMF ratio 126, RE 14.1" and RE ratio 103.

Lot

54 Pecks Consensus 3012 7155A

Born: 04/26/17 19281135 Tattoo: 7155A Bull

Connealy Consensus 7229 #*
Mra Consensus 3012
17681367 Mra Lady 1004

Hoover CC&7 H421 *
Ms Pecks Wix 565
19111590 Fortunes Miss Wix 702 +

Connealy Consensus #*
Blue Lilly of Conanga 16
Sitz Dash 10277 #*
Mra Lady 9017
SydGen C C & 7 #*
Miss Blackcap Ellston F500 #
S A V 004 Traveler 4412 +
Miss Wix 2021 HC Mc Cumber +

CED	BW	WW	YW	SC	DOC	HP	CEM	Milk	
+4	+1.2	+50	+97	+0.45	+29	+13.6	+9	+18	
CW		Marb		RE		FAT		\$W	\$B
+21 .41		+38 .37		+16 .37		+0.02 .34		+42.25	+82.79

- Individual Performance: BW 82 lbs, 205 Wt. 689 lbs, WWR 96, 365 Wt. 1145 lbs. YWR 99.
- Dam's Production: NR 1@96, YR 1@99.
- Adjusted Ultrasound Scan Data: %IMF 3.55, REA 11.1, Rib Fat .29, Rump Fat .31.
- Born unassisted out of a first-calf heifer.
- His dam is a maternal sister to the lot 15 bull in this offering.

Lot

57 Pecks Upward 798

Born: 03/31/17 Commercial Tattoo: 798 Bull

Sitz Upward 307R #
Montana Upward 533 SF *
18191275 SF Miss 3437 +*

CAV Brilliance 618-2618
Commercial Angus Cow
LAU Karama JC 915

Connealy Onward #*
Sitz Henrietta Pride 81M
Connealy Consensus 7229 #*
SF Miss 975 +*
S A V Brilliance 8077 #*
Gannon Lassie F618
LT 598 Bando 9074 #
LAU Karama JC 273 #

Sire's EPDs														
CED	BW	WW	YW	SC	DOC	HP	CEM	Milk	CW	MB	RE	FAT	\$W	\$B
+10	-1.8	+57	+96	+36	+17	+14.6	+6	+24	+47	+6.8	+7.0	+0.10	+66.67	+149.20

- Individual Performance: BW 82lbs, 205 Wt. 650 lbs, 365 Wt. 1225 lbs.
- **Sells commercial.**

Peckenpaugh Angus Semen

Lot

58 Montana Example 7069

Born: 04/01/17		+*18844727		Tattoo: 7069		Bull		
Baldridge Waylon W34 *				GAR-EGL Protege #+*				
Baldridge Titan A139 +*				Baldridge Blackcap T163 *				
17821946 Baldridge Forever Lady T269				Baldridge Rapid R31				
GAR Progress #+*				Baldridge Forever Lady P164				
Montana Rita B026 +*				GAR Predestined #*				
17890136 Riverbend Rita Y606 +*				GAR Objective 2345 *				
				Summitcrest Complete 1P55 #*				
				Riverbend Rita S241 +				
CED	BW	WW	YW	SC	DOC	HP	CEM	Milk
+9	-.4	+75	+134	+50	+16	+15.1	+11	+21
CW	Marb	RE	FAT	AGI		\$W	\$B	
+53	.40	+1.05	.36	GE-EPD		+71.87	+170.84	



Montana Example 7069
Reference sire A

Lot

58A 10 Units

Stored at 605 Sires, Marion, SD

- Refer to Reference Sire A

Lot

58B 10 Units

Stored at 605 Sires, Marion, SD

- Refer to Reference Sire A

Lot

58D 10 Units

Stored at 605 Sires, Marion, SD

- Refer to Reference Sire A

Lot

58c 10 Units

Stored at 605 Sires, Marion, SD

- Refer to Reference Sire A

Lot

58E 10 Units

Stored at 605 Sires, Marion, SD

- Refer to Reference Sire A

Peckenpaugh Angus Two Years Harvest Data

Peckenpaugh's sent 296 steers to Cargill at Schuyler Nebraska the fall of 2017

137 of steers made the Certified Angus Beef program 46.3%
102 steers went Prime 34.5%
189 steers went Choice 63.9%
5 steers went Select 1.6%

Peckenpaugh's sent 252 steers to Cargill at Schuyler Nebraska the fall of 2018

107 of steers made the Certified Angus Beef program 42.5%
101 steers went Prime 40%
189 steers went Choice 59.6%
1 steer went Select 0.4%

- Steers were all born and fed here.
- Steers did not receive any implants.
- Mostly sired Peckenpaugh Angus bulls.
- Steers were all black or baldies.

"The national average of cattle that make CAB qualification is less than 1 in 4 Angus influenced cattle harvested at licensed plants and meet all 10 carcass specifications."

Stated by Certified Angus Beef LLC,



Lot #	Tatt	HD/LD Type	CED %	BW %	WW %	YW %	DMI %	YH %	SC %	DOC %	HP %	CEM %	MILK %	MW %	MH %	CW %	MARB %	RE %	FAT %	TEND %
1	704	HD50K	40	16	75	90	50	30	78	63	77	51	28	75	84	70	60	38	61	55
2	706	HD50K	77	50	9	21	73	5	40	1	4	65	42	21	24	14	83	18	9	4
3	709	HD50K	13	8	57	56	37	16	52	5	54	51	22	61	51	66	78	89	78	22
4	710	HD50K	42	14	69	92	22	26	14	35	1	52	38	71	76	72	11	60	56	53
5	712	HD50K	61	78	29	66	58	46	88	75	69	46	93	48	47	70	77	92	27	19
6	717	HD50K	26	9	93	96	38	73	21	24	54	82	28	94	86	82	75	93	89	27
7	718	HD50K	76	39	81	59	40	66	21	13	35	52	23	59	32	55	83	44	48	78
8	726	HD50K	47	18	42	88	34	42	61	15	9	22	88	7	38	48	55	60	95	36
9	729	HD50K	81	79	53	55	14	15	61	70	6	20	92	43	22	46	75	83	65	2
10	731	HD50K	53	30	47	51	50	39	10	35	1	16	18	90	73	66	44	33	51	2
11	732	HD50K	32	31	59	61	54	69	53	17	29	50	29	82	89	54	93	48	62	52
12	733	HD50K	63	37	72	63	93	26	59	1	1	23	65	9	8	65	88	47	59	49
13	737	HD50K	32	24	72	79	51	1	20	8	10	30	65	34	26	64	72	62	68	64
14	750	HD50K	87	72	37	77	21	31	22	2	18	19	24	31	47	41	90	50	30	61
15	751	HD50K	69	58	56	45	51	6	67	61	15	52	19	38	33	53	73	75	62	9
16	756	HD50K	96	82	65	60	47	46	52	40	11	6	67	7	1	30	29	80	61	64
17	760	HD50K	71	31	80	77	41	87	57	59	41	79	99	92	92	94	43	69	56	52
18	764	HD50K	54	18	96	90	44	38	84	69	11	41	68	70	29	90	82	82	65	55
19	768	HD50K	67	38	37	55	71	3	42	21	30	3	2	14	4	23	40	21	54	41
20	771	HD50K	47	10	52	75	6	80	54	70	8	78	67	54	74	59	34	32	41	38
21	772	HD50K	23	17	77	91	18	34	58	21	65	17	53	49	29	83	94	69	63	33
22	776	HD50K	100	100	94	99	34	70	64	89	62	68	42	37	30	98	90	62	18	44
23	777	HD50K	42	7	74	47	42	86	54	35	60	98	37	67	64	32	96	57	47	37
24	780	HD50K	89	94	25	56	47	8	23	6	9	66	39	41	29	25	54	61	54	40
25	781	HD50K	81	59	55	36	62	24	60	21	51	15	69	51	10	41	39	65	27	3
26	784	HD50K	86	33	65	45	26	7	53	67	37	82	80	62	39	44	81	82	27	9
27	785	HD50K	46	20	89	87	2	25	41	54	47	6	21	23	21	86	95	92	31	96
29	790	HD50K	78	47	17	21	88	8	15	31	16	68	18	23	25	10	52	31	61	47
30	794	HD50K	22	11	64	69	80	50	1	7	13	60	9	59	78	85	91	86	60	8
31	797	Commercial																		
32	799	HD50K	71	60	86	87	34	12	38	18	44	45	4	47	52	77	37	66	90	73
33	7103	HD50K	92	99	21	22	76	4	79	83	58	68	96	10	6	29	91	18	14	49
34	7107	HD50K	60	71	44	58	55	53	46	56	75	40	61	50	37	47	88	41	42	24
35	7111	NA	NA	NA	NA	NA	NA	NA	NA	NA	NA	NA	NA	NA	NA	NA	NA	NA	NA	NA
36	7112	HD50K	86	46	76	48	33	60	51	55	14	53	66	53	38	61	84	34	7	90
37	7115	HD50K	54	31	84	97	2	23	9	33	15	17	78	76	34	87	95	78	41	33
38	7124	HD50K	76	50	62	39	30	23	2	8	7	95	35	65	30	33	71	26	38	1
39	7125	HD50K	86	31	69	82	43	47	76	43	23	88	93	17	15	49	85	24	12	86
40	7126	HD50K	53	21	11	13	12	82	13	3	8	86	16	16	5	4	80	46	70	94
41	7129	HD50K	68	60	3	27	78	5	7	25	4	38	71	7	21	7	86	3	2	35
42	7134	HD50K	49	30	46	9	61	63	2	1	56	79	86	10	5	30	77	53	20	43
43	7132	NA	NA	NA	NA	NA	NA	NA	NA	NA	NA	NA	NA	NA	NA	NA	NA	NA	NA	NA
44	7136	HD50K	88	82	42	14	23	68	39	69	41	75	58	80	78	27	93	66	44	25
45	7141	HD50K	46	57	84	96	47	20	81	12	21	77	74	50	32	76	88	94	78	18
46	7148	HD50K	19	1	93	81	12	97	34	22	6	79	53	70	47	90	97	58	8	61
47	7160	HD50K	79	41	80	76	26	20	24	48	8	85	74	54	18	60	58	93	31	21
48	7161	HD50K	23	57	33	12	81	2	30	5	31	24	25	53	16	17	48	73	70	21
49	7167	HD50K	92	68	51	70	74	72	26	12	29	99	90	49	52	38	54	62	19	75
50	7169	HD50K	74	48	7	31	34	41	72	69	4	36	50	86	76	6	86	26	59	37
51	7180	HD50K	88	45	20	11	45	77	1	12	16	100	65	10	23	17	87	55	41	69
52	7181	HD50K	68	26	83	86	10	22	32	43	32	36	38	28	17	63	100	61	59	67
54	7155A	HD50K	60	49	61	67	67	80	78	8	2	31	72	44	62	58	70	86	39	22
57	798	Commerical																		

Peckenpaugh ANGUS

