

THE HISTORIC  
**Midwest Connection Angus Sale**

Bloomfield Livestock Market in Bloomfield, Iowa

**SUNDAY, DECEMBER 18, 2016 - 1 PM**

*Featuring* the Complete Dispersion of the legendary Angus Acres herd  
with special contributions from leading Angus herds in the Midwest.





THE HISTORIC  
**Midwest Connection Angus Sale**  
Bloomfield Livestock Market in Bloomfield, Iowa  
**SUNDAY, DECEMBER 18, 2016 - 1 PM**

## SELLING 60 HEAD

6 Long Yearling Bulls  
5 Spring Bull Calf Pairs  
3 Spring Heifer Calf Pairs  
3 Fall Pairs • 11 Bred Cows  
13 Bred Heifers  
9 Fancy Heifer Calves  
5 Embryo Lots

### SALE DAY PHONES:

BLOOMFIELD LIVESTOCK: 641-664-2435

AL CONOVER: 515-491-8078

DAVE SWEENEY: 641-373-4340

CHRISTA NICHOLS: 641-373-0342

### LIVESTOCK PRESS REPRESENTATIVES

LIVESTOCK PLUS.....MIKE SORENSEN (641) 745-7949

MIDWEST MARKETER....TOM ROONEY (515) 491-6025

### AMERICAN ANGUS REGIONAL MANAGER

ADAM CONOVER 816-676-8560

### AMERICAN BOARD OF OF DIRECTORS

DAVID NICHOLS 641-369-2829

### IOWA ANGUS ASSOCIATION

PRESIDENT.....JOE BECKER

VICE PRESIDENT....CODY JENSEN

SEC/TREAS.....COLBY & TRICIA HOLMES

## AUCTIONEER

AL CONOVER - 515-491-8078

## INSURANCE SERVICES

JEANNE CONOVER - 515-491-1335

## GENERAL INFORMATION

### SALE LOCATION:

Bloomfield Livestock Market

Located on Hwy 63 North.

Bloomfield, IA 641-664-2435

### MOTEL ACCOMMODATIONS:

Cobblestone Inn

509 S Washington

Bloomfield, IA

641-664-2000

Southfork Motel

Jct 2 & 63

Bloomfield, IA

641-664-1063

**INSPECTION OF CATTLE:** Cattle will be available for inspection on Saturday, December 17th at the sale site.

**HEALTH:** Interstate health papers furnished on all cattle selling.

**TERMS:** Cash. Please settle for cattle promptly

**TERMS & CONDITIONS:** All cattle sell according to the standard terms and conditions of the American Angus Association.

**TRUCKING:** We will be glad to assist in making the best possible trucking arrangements.

**INSURANCE:** Will be available through Conover Auction Service, an American Livestock agent.

**LIABILITY:** All persons attending this sale do so at their own risk, legal or otherwise, for their safety or the behavior of the animals. The Owners, Auction Service, Sale Staff and hosts assume no liability for property loss or any accidents that may occur.

**ANNOUNCEMENTS:** From the block will take precedence over the catalog. Buyers unable to attend may send their bids to the Auction Service, Field Representatives or Auctioneer.

**LUNCH:** The sale barn cafeteria will be closed on sale day. Several lunch establishments can be utilized in close proximity to the sale facility.

### OFF-SITE BIDDING

Those unable to attend are invited to contact any sale management or livestock press representatives to execute their bidding. A conference call line will also be set up through GoToMeeting. Telephone bidding may be accomplished by calling Jeanne Conover at 515-491-1335, signing up for a bidding number, and then receive a call-in number and PIN to listen to the sale.

Sale managed by



# Livestock HUB

WWW.LIVESTOCKHUB.NET

DAVE SWEENEY  
21547 CO HWY S27  
ALDEN, IA 50006  
641-373-4340

CHRISTA NICHOLS  
12265 170TH ST  
ALDEN, IA 50006  
641-373-0342

livestockhub1@gmail.com



# The Angus Acres Complete Herd Dispersion



*Blaine Shoemaker stands in front of the barn he helped build as a youth. This structure is being restored.*

Blaine Shoemaker grew up on a large row crop and cattle operation where the Angus Acres headquarters stands today. Blaine and his brother Dwight were under the constant supervision and tutelage of their father Clarence and Uncle Everett who was the primary cattle operations manager over the fed cattle, swine and 200 Angus cow herd. The Shoemaker boys were avid 4-H exhibitors and Blaine claimed class winning banners locally as well as Chicago, Denver, Ft Worth and Houston Livestock Exhibitions. Shoemaker Farms consumed most, if not all of its grain production through livestock at one time yet yielded to an expansion of grain operations in the mid 70's and dispersed the cow herd.

Blaine's livestock interest led to an education in Animal Science at the University of Illinois where he competed on the winning 1960 livestock judging team. He later received his Masters degree in Meat Technology and Marketing under the supervision of Dr. Burdette Breidenstein. Blaine's studies revolved around cutability studies to predict the retail product yield based

on quality grade for the USDA. His studies were eventually utilized to develop the USDA Yield Grades 1-5 that are used today.

After completing his thesis, Blaine followed his mentor, Dr Breidenstein to Wilson Foods where he soon headed the processed beef division in the Oklahoma City office. Later he joined Sizzler Steak Houses in charge of purchasing beef for their 600 plus restaurants, continuing to operate from his Oklahoma home. In subsequent years Mr Shoemaker worked for the National Livestock and Meat Board to help develop and pass the vote for the National Beef Check Off program. After the vote passed, he helped take the National Livestock and Meat Board Research program from \$500,0.0 to \$7 million per year.

Angus Acres was born in 1996 when Blaine and Dwight came back together with a breeding philosophy that was spawned by years in the beef industry and the knowledge of how quality and yield grade can influence profitability. The female selections combined visual appeal with EPD values generally in the top 25% with a primary focus on carcass traits. The program used only AI sires, and propagated the best cows through embryo transplant.

Every member of the Shoemaker family is highly educated, including his wife Tony, who has a business degree from the University of Iowa, their daughters, and two eldest granddaughters. Daughter Gwen and her husband Allen Niemann live in Oklahoma City and have two college age daughters. Another daughter, Amy and her husband Jim Martin have two daughters in the 3rd and 6th grade.

On December 18th Blaine and Dwight will hang up their sorting sticks and pitch forks planning a more relaxed lifestyle focused on family and friends. Blaine says he has been blessed to have worked with good people and good cattle and he believes that great opportunities exist for the next generation of Angus cattlemen.



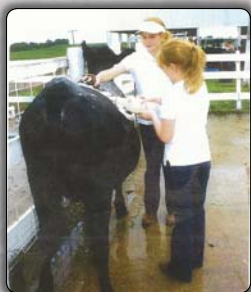
*Family, l-r: Gwen Niemann (daughter), Avery Niemann, wife Tony, Ashton Niemann and dog Finley, Mary Grace Martin, Amy Martin (daughter).*



*Tony and I, 56 years together*



*Al and Gwen (daughter) with daughters Avery and Ashton*



*Avery & Ashton Niemann washing their calf at the local Mercy County Fair*



*Grandchildren, l-r: Avery Niemann, Mary Grace Martin, Miller Martin, Ashton Niemann*



*Road sign for Shoemaker Farms*





**Nueta Royal Pride 735 • Lot 1**



**Nueta Royal Pride 735** [AMF-DDF-NHF]

Born: 03/29/07 +15785391 Tattoo: 735 Cow

G A R Precision 1680 #  
C A Future Direction 5321  
12493607 C A Miss Power Fix 308  
O S U 6T6 Ultra #  
BT Royal Pride 237G  
12917705 BT Royal Pride 326A

Tehama Bando 155 #  
9J9 G A R 856  
S A F Power Fix #  
C A Lady Eight 1015  
S S Traveler 6T6 #  
D F Empress 6079  
Brost Power Drive #  
Beartooth Pride 34Y

PRODUCTION EPDs				MATERNAL EPDs			\$ VALUES					
CED	BW	WW	YW	CEM	Milk	SEN	SW	SF	SG	SB		
+6	+1.8	+41	+67	+8	+30	-6.29	+43.87	+21.56	+39.82	+98.63		
CARCASS	CW	+21	.25	MARB	+56	.28	REA	+66	.30	FAT	+003	.27

- Will be bred by sale day to WR Journey – 1X74.
- Production: BR 5@103, NR 5@105, YR 3@101.
- Dam's Production: BR 5@100, NR 5@119, YR 1@100, IMF 41@107 and fat 41@100.



**BT Crossover 758T**  
Full brother to Lot 1

- This Angus Acres donor dam, Nueta Royal Pride 735 was an important Angus Acres acquisition from the 2014 Pasture View Angus Sale and is recognized by Angus aficionados as a full sister to the past National Western Stock Show Grand Champion, BT Crossover 758N. She has been previously flushed in the prominent ET programs at Baldrige-Tiedeman Angus, NE and Werner Angus, IL.
- Her Pathfinder® sire, CA Future Direction 5321 is a long-time carcass trait standout with over 14,000 ultrasound progeny that earned him Marb, RE, \$G, \$QG and \$YG values in the top 15% or better.
- Her sons have garnered herd sire duties for Don Maxwell, Baxter, IA; Carl Liebhart, New Boston, MO and Blake Kadel, Joy, IL. She has daughters working at Sundberg Farms, Mendota, IL; Kendall Stahl, Brimfield, IL; Abe Henkel, El Paso, IL and two at Werner Angus, Cordova, IL.
- She sells with one free embryo of the mating to RB Tour of Duty 177. (Same as Lot 1A).



**AA Mercer Royal Pride 476 • Lot 2A**



**4 Frozen Embryos**

Stored at Trans Ova Genetics, Sioux Center IA

Werner War Party 2417 +  
R B Tour Of Duty 177 +  
16984170 B A Lady 6807 305 +

Connealy Onward #  
BAAR USA Lady Jaye 489 +  
Vermilion Dateline 7078 #  
G D Lady Hi Flyer 302 +  
G A R Precision 1680 #  
C A Miss Power Fix 308  
O S U 6T6 Ultra +  
BT Royal Pride 326A

C A F Future Direction 5321 #  
Nueta Royal Pride 735 +  
15785391 BT Royal Pride 237G

SIRE'S EPDs										
CED	BW	WW	YW	CEM	Milk	SEN	SW	SF	SG	SB
+6	+2.3	+67	+121	+11	+36	-32.61	+69.40	+92.92	+40.45	+158.31
DAM'S EPDs										
CED	BW	WW	YW	CEM	Milk	SEN	SW	SF	SG	SB
+6	+1.8	+41	+67	+8	+30	-6.29	+43.87	+21.56	+39.82	+98.63

- Embryo sire, RB Tour of Duty 177 is a maternal brother to RB Lady Standard 305-890, the all-time record selling female of the National Western Stock Show Foundation Female Sale when she garnered a \$170,000 bid, while his full sister, RB Lady Party 192-305 topped the 2015 NWSS Sale at \$152,000. "Tour of Duty" was the record-selling bull of the Minnesota Bull Test selected by Crouch Angus Valley who became a top-selling bull at ABS and ORlgen.



**AA Mercer Royal Pride 476**

Born: 03/18/16 +18552909 Tattoo: 476 Cow

Connealy Consensus 7229 #  
V A R Generation 2100  
17171587 Sandpoint Blackbird 8809

Connealy Consensus  
Blue Lilly of Conanga 16  
Connealy Onward #  
Riverbend Blackbird 4301  
G A R Precision 1680 #  
C A Miss Power Fix 308  
O S U 6T6 Ultra #  
BT Royal Pride 326A

C A Future Direction 5321 #  
Nueta Royal Pride 735  
15785391 BT Royal Pride 237G

PRODUCTION EPDs				MATERNAL EPDs			\$ VALUES					
CED	BW	WW	YW	CEM	Milk	SEN	SW	SF	SG	SB		
I+7	I+1.7	I+53	I+94	I+8	I+38	-24.44	+62.43	+56.21	+45.33	+122.50		
CARCASS	CW	I+30	.05	MARB	I+.75	.05	REA	I+.92	.05	FAT	I+.021	.05

- Dam's Production: BR 5@103, NR 5@105, YR 3@101.
- Grandam's Production: BR 5@100, NR 5@119, YR 1@100, IMF 41@107 and Fat 41@100.
- This embryo transplant daughter of the Lot 1 donor dam blends maternal and carcass genetics with a pedigree of noble lineage. Her recipient dam is lot 2.
- Her sire, VAR Generation 2100 is ABS feature and \$500,000 valued, son of the \$440,000 Vintage and Herbster donor, Sandpoint Blackbird 8809 that has over \$1.9 million in progeny sales. Noteworthy siblings to Generation include the \$330,000 ½ interest VAR Frontier 3011, the ABS featured sire, VAR Reserve 1111 and donor dams in the breed's most prominent breeding programs.



# The Angus Acres Complete Herd Dispersion



**AA Mercer Barbara 582 • Lot 2**



**WR Journey-1X74**  
Service sire of Lot 2

- Tyler Swett, Burwell NE selected her first son in 2015.
- Her sire, SAV Bismarck, is a long-time Genex featured sire that was the #2 registration sire in 2012. With high CED and WW values in this bull's performance portfolio, it is no surprise that he boasts a SW in the top 1% of current sires. Daughters of Bismarck are revered in the industry because they are beautiful, moderate framed, gentle natured cows with impeccable udder quality and optimum milk.
- Just two generations removed from the foundation Angus Acres donor dam Summitcrest Barbara 1L70.
- **This cow was the recipient dam for the 2016 heifer calf that sells as Lot 2A.**

**2** **AA Mercer Barbara 582**  
Born: 01/15/12      17274210      Tattoo: 582      Cow

G A R Grid Maker #  
S A V Bismarck 5682  
15109865 S A V Abigale 0451

BR Midland #  
AA Mercers Barbara 1298  
16051067 Summitcrest Barbara 1L70

G D A R Traveler 044 #  
G A R Precision 2536  
Schoenes Fix It 826 #  
S A V Abigale 6062  
Twin Valley Precision E161 #  
BR Royal Lass 7036-19  
Gardens Prime Time #  
Summitcrest Barbara 0B74 #

PRODUCTION EPDs				MATERNAL EPDs			\$ VALUES					
CED	BW	WW	YW	CEM	Milk	SEN	SW	SF	SG	SB		
+10	+0.6	+45	+76	+12	+18	+5.64	+36.89	+24.02	+45.35	+90.73		
CARCASS	CW	I+19	.05	MARB	I+.66	.05	REA	I+.71	.05	FAT	I-.013	.05

- AI bred on 5/23/2016 to WR Journey – 1X74. Vet examined safe and due 3/1/2017.
- Production: BR 2@100 and NR 2@99.
- Dam's Production: BR 2@97 and NR 2@99.

**2B** **AA Mercer Barbara 5825**  
Born: 04/04/15      18276792      Tattoo: 5825      Cow

GDAR Game Day 449 #  
Sitz Top Game 561X  
16559105 Sitz Pride 88T #

S A V Bismarck 5682 #  
AA Mercer Barbara 582  
17274210 AA Mercers Barbara 1298

Boyd New Day 8005 #  
G D A R Miss Wix 474 #  
Connealy Onward #  
Sitz Pride 46P  
G A R Grid Maker #  
S A V Abigale 0451  
BR Midland #  
Summitcrest Barbara 1L70

PRODUCTION EPDs				MATERNAL EPDs			\$ VALUES				
CED	BW	WW	YW	CEM	Milk	SEN	SW	SF	SG	SB	
+7	+1.6	+50	+93	+8	+29	-16.78	+45.82	+51.01	NA	NA	

- AI bred on 5/14/2016 to Quaker Hill Rampage 0A36. Vet examined safe and due 2/20/2017.
- Individual performance BW 71 lbs, BWR 95, 205 day wt 601 lbs.
- Dam's Production: BR 2@100 and NR 2@99.



**AA Mercer Barbara 5825 • Lot 2B**



**Sitz Top Game 561X**  
Sire of Lot 2B

- This beautiful bred heifer stems from the renowned Barbara cow family at Angus Acres descending from the \$11,000 Summitcrest Barbara 1L70.
- Her sire, Sitz Top Game 561X is a rapid growth sire utilized aggressively in the EXAR program. He is siring muscle, feet and leg conformation and end product value verified by his SB value in the top 1%.
- Her service sire, Quaker Hill Rampage 0A36 is an ABS feature and is MCC Daybreak's biggest "spread" son. Rampage is the only proven sire in the breed to achieve a +9 CED and a +192 SB.



# The Angus Acres Complete Herd Dispersion



**AA Mercer Barbara 1240 • Lot 3**



**Summitcrest Prime Cut 1G42**  
The \$125,000 maternal brother to the dam of Lot 3

- Her donor dam, is a maternal sister to Summitcrest Prime Cut 1G42, the \$125,000 Stevenson/Basin herdsire. "1L70" was the \$11,000 feature in the 2004 Summitcrest Fall Female Sale in Ohio, then she was selected by Angus Acres as the Lot 75 feature of the 2005 Woodlawn Angus Dispersion. A maternal sister to the donor dam was the \$25,000 ½ interest top selling female of the 2000 Summitcrest offering while another sister was the \$20,000 top seller at the 2001 Summitcrest Sale.
- Jeff Conrad, Keosauqua, IA selected her 2014 daughter.
- This is a massive, big bodied, feminine cow with that perfect "EXT" udder conformation.



## AA Mercer Barbara 1240

Born: 03/24/10      #16689050      Tattoo: 1240      Cow

Emulation N Bar 5522 #  
N Bar Emulation EXT  
10776479    N Bar Primrose 2424

Gardens Prime Time #  
Summitcrest Barbara 1L70  
13907942    Summitcrest Barbara 0B74 #

Emulation 31 #  
Ankony 8F78 Lass 8F275  
Emulation 31 #  
Primrose N Bar 9962  
R R Traveler 5204 #  
Green Garden Susie 1246 S1 #  
Hyline Nickel #  
Summitcrest Barbara 0X60

PRODUCTION EPDs				MATERNAL EPDs			\$ VALUES					
CED	BW	WW	YW	CEM	Milk	SEN	\$W	\$F	\$G	\$B		
+3	+2.1	+33	+60	+10	+17	+13.36	+19.92	+10.75	+23.02	+91.84		
CARCASS	CW	I+28	.05	MARB	I+.45	.05	REA	I+.08	.05	FAT	I+.038	.05

- AI bred on 5/15/2016 to WR Journey – 1X74. Vet examined safe and due 2/21/2017.
- Production: BR 3@99 and NR 3@96.
- Dam's Production: BR 5@97 and NR 5@100, YR 1@106, IMF 27@107, RE 27@99, Fat 27@100, RU Fat 27@95.



## AA Mercer Barbara 106

Born: 03/22/16      #18548679      Tattoo: 106      Cow

EXAR Upshot 0562B  
EXAR Denver 2002B  
17160560    Exar Royal Lass 1067

N Bar Emulation EXT #  
AA Mercer Barbara 1240  
16689050    Summitcrest Barbara 1L70

Sitz Upward 307R #  
EXAR Barbara T020 #  
EXAR 263C #  
BR Royal Lass 19-132  
Emulation N Bar 5522 #  
N Bar Primrose 2424  
Gardens Prime Time #  
Summitcrest Barbara 0B74 #

PRODUCTION EPDs				MATERNAL EPDs			\$ VALUES				
CED	BW	WW	YW	CEM	Milk	SEN	\$W	\$F	\$G	\$B	
I+6	I+2.3	I+50	I+90	I+10	I+26	-11.25	+42.23	+45.53	NA	NA	

- Dam's Production: BR 3@99 and NR 3@96.
- Grandam's Production: BR 5@97 and NR 5@100, YR 1@106, IMF 27@107, RE 27@99, Fat 27@100, RU Fat 27@95.



**AA Mercer Barbara 106 • Lot 3A**



**EXAR Denver 2002B**  
Sire of Lot 3A

- Her sire, EXAR Denver 2002B was the lead bull in the Grand Champion Carload of Bulls at the 2013 NWSS. He set a record price in the breed when he sold one-third semen interest for \$340,000 at the 2013 Express Ranch Sale.
- Her conformation is as exquisite as her gorgeous mother. She could be a competitive show heifer and then a foundation cow.



# The Angus Acres Complete Herd Dispersion



**AA Consensus Leader • Lot 3B**

**ANGUS ACRES BREEDING GUARANTEE**  
 Angus Acres will reimburse buyers for a breeding soundness exam prior to turn out and each bull sells with a 90-day breeding guarantee from that day forward.

- His grandam is a maternal sister to the \$125,000 Summitcrest Prime Cut 1G42 featured at Stevenson/Basin.
- His sire, Connealy Consensus 7229 is one of the most popular young sires in the commercial and registered business. He is a low birth weight bull whose sons are making their way into AI studs and his daughters are topping sales nationwide.



## AA Consensus Leader

**Born:** 04/23/15      **18276714**      **Tattoo:** 105      **Bull**

Connealy Consensus  
**Connealy Consensus 7229**  
 16447771 Blue Lilly of Conanga 16

KMK Alliance 6595 I87 #  
 Blinda of Conanga 004  
 Woodhill Admiral 77K #  
 Blue Cash of Conanga 6020  
 Emulation N Bar 5522 #  
 N Bar Primrose 2424  
 Gardens Prime Time #  
 Summitcrest Barbara 0B74 #

N Bar Emulation EXT #  
**AA Mercer Barbara 1240**  
 16689050 Summitcrest Barbara 1L70

PRODUCTION EPDs				MATERNAL EPDs			\$ VALUES			
CED	BW	WW	YW	CEM	Milk	SEN	\$W	\$F	\$G	\$B
+5	+1.3	+42	+75	+8	+21	+2.16	+34.65	+24.30	NA	NA

- Individual performance: BW 72 lbs, BWR 92, 205 day wt 767 lbs.
- Dam's Production: BR 3@99 and NR 3@96.
- Grandam's Production: BR 5@97 and NR 5@100, YR 1@106, IMF 27@107, RE 27@99, Fat 27@100, RU fat 27@95.



## AA Consensus Star

**Born:** 03/14/15      **18276712**      **Tattoo:** 375      **Bull**

Connealy Consensus  
**Connealy Consensus 7229**  
 16447771 Blue Lilly of Conanga 16

N Bar Emulation EXT #  
**AA Mercer Barbara 1213**  
 17545473 Summitcrest Barbara 1L70

KMK Alliance 6595 I87 #  
 Blinda of Conanga 004  
 Woodhill Admiral 77K #  
 Blue Cash of Conanga 6020  
 Emulation N Bar 5522 #  
 N Bar Primrose 2424  
 Gardens Prime Time #  
 Summitcrest Barbara 0B74 #

PRODUCTION EPDs				MATERNAL EPDs			\$ VALUES					
CED	BW	WW	YW	CEM	Milk	SEN	\$W	\$F	\$G	\$B		
+3	+2.2	+49	+83	+7	+24	-5.39	+42.29	+33.63	+36.02	+95.35		
CARCASS	CW	I+25	.05	MARB	I+.77	.05	REA	I+.39	.05	FAT	I+.057	.05

- Individual performance: BW 71 lbs, BWR 101, 205 day wt 862 lbs, WWR 103.
- Dam's Production: BR 1@101, NR 1@103.



**AA Consensus Star • Lot 4**



**Connealy Consensus 7229**  
 Sire of Lots 3B and 4

- Born unassisted out of a first-calf heifer.
- This bull is a full brother "in blood" to the Lot 3B bull on this page.
- His sire, Connealy Consensus 7229 was the top sire for registrations in the breed for 2014 by more than 2000 head. He sires calves with modest birth weights that grow into high performance cattle with abundant muscling. Consensus is a balanced trait sire with over 15,000 progeny proving a rare combination of a +20.09 \$EN and a +86.37 \$W.



# The Angus Acres Complete Herd Dispersion



**RRR Bashra 3140 • Lot 5**

**5**

## RRR Bashra 3140

Born: 02/28/13 17561515 Tattoo: 3140 Cow

Mytty In Focus #  
 A A R Ten X 7008 S A  
 15719841 A A R Lady Kelton 5551 #  
 Sitz Upward 307R #  
**RRR Bashra 1144**  
 17295172 Bashra of Conanga 6557 929L

S A F Focus of E R #  
 Mytty Countess 906  
 S A V Adaptor 2213  
 H S A F Lady Kelton 504B  
 Connealy Onward #  
 Sitz Henrietta Pride 81M  
 Connealy Consensus  
 Basha of Conanga 3150

PRODUCTION EPDs				MATERNAL EPDs			S VALUES					
CED	BW	WW	YW	CEM	Milk	SEN	SW	SF	SG	SB		
+7	+0.5	+67	+121	+10	+28	-20.82	+67.61	+86.14	+44.58	+173.04		
CARCASS	CW	+67	.27	MARB	+1.06	.36	REA	+84	.33	FAT	+0.25	.35

- Will be bred by sale day to WR Journey – 1X74.
- Production: BR 1@104 and NR 1@103.
- Dam's Production: BR 3@96, NR 3@95, YR 2@104, IMF 1@100, RE 1@102 and Fat 1@100.



## JK Bashra 649

Featured Lot 1 heifer in the 2016 JK Angus Sale and maternal sister to Lot 5

- Selected by Blaine Shoemaker as the \$9000 feature of the 2014 Rock River Ranch Sale where she posted individual performance that included a BWR 96, WWR 107 and YWR 109. Her grandam, Bashra of Conanga 6557 929L was Rock River's selection as choice of the Connealy Angus heifers.
- Her maternal sister is the headliner, Lot 1 female in the 2016 JK Angus Sale where her dam serves as the cornerstone JK Angus donor.
- She perfectly blends the calving ease and multi-trait excellence of "Ten X" with the growth and power attributes of "Upward" to create an EPD masterpiece earning WW, YW, CW, \$W, \$F and \$B values in the top 1% with Marb and SQG in the top 2% of current dams.
- She sells with one free frozen embryo sired by EXAR Denver 2002B that is stored at Trans Ova Genetics, Sioux Center IA. The same mating exists in a pregnancy carried by the Lot 12 cow.

**5B**

## AA Power Tool Supreme

Born: 03/07/15 18308342 Tattoo: 65 Bull

G A R Predestined #  
**PA Power Tool 9108**  
 16381311 Shamrocks Beebee Queen 3095

B/R New Design 036 #  
 G A R Ext 4206 #  
 Bon View New Design 208 #  
 Shamrock's Beebe Queen 1823 #  
 Mytty In Focus #  
 A A R Lady Kelton 5551 #  
 Sitz Upward 307R #  
 Bashra of Conanga 6557 929L

A A R Ten X 7008 S A #  
**RRR Bashra 3140**  
 17561515 RRR Bashra 1144

PRODUCTION EPDs				MATERNAL EPDs			S VALUES					
CED	BW	WW	YW	CEM	Milk	SEN	SW	SF	SG	SB		
+7	+1.4	+62	+115	+7	+33	-28.49	+62.12	+71.22	+49.66	+138.55		
CARCASS	CW	I+44	.05	MARB	I+1.09	.05	REA	I+74	.05	FAT	I.012	.05

- Individual performance: BW 78 lbs, BWR 104, 205 day wt 880 lbs, WWR 103.
- Dam's Production: BR 1@104, NR 1@103.



**AA Power Tool Supreme • Lot 5B**



## PA Power Tool 9108

Sire of Lot 5B

- Born unassisted out of a first-calf heifer.
- His sire, PA Power Tool 9108 is the popular ORiGen/ABS featured performance, carcass and genomic sire that is loaded with convenience and quality traits popular with buyers. His progeny have been among the top averaging sire groups in many bull sales due to their data and design. Sixteen sons averaged \$19,734 at Connealy Angus in NE.



# The Angus Acres Complete Herd Dispersion

## 6 RRR Blackbird X22 [DDF-OSF]

Born: 03/02/10 +16696244 Tattoo: X22 Cow

Connealy Onward #  
Sitz Upward 307R  
14963730 Sitz Henrietta Pride 81M

Connealy Lead On #  
Altune of Conanga 6104  
Sitz Value 7097 #  
Sitz Henrietta Pride 1370  
B/R New Design 036 #  
B/R Ruby of Tiffany 155  
G A R Precision 1680 #  
G A R Traveler 760

B/R New Design 323 #  
DTA Blackbird 339  
14666662 Davis Blackbird 7038

PRODUCTION EPDs				MATERNAL EPDs			\$ VALUES				
CED	BW	WW	YW	CEM	Milk	SEN	SW	SF	SG	SB	
+8	+1.9	+38	+78	+10	+20	+3.05	+25.23	+25.91	+34.61	+115.98	
CARCASS	CW	+40	.23	MARB	+58	.25	REA	+68	.29	FAT	+030 .26

- Will be bred by sale day to WR Journey – 1X74.
- Production: BR 4@98 and NR 4@95.
- Her first daughter was selected by Justin & Jan Gillespie, Toulon, IL while sons have become herd sires for Larry Nutsch, Alma, KS; Scott & Cole Patrick, Ericson, NE.
- Selected by Blaine Shoemaker from the 2012 Rock River Ranch Sale, X22 descends from a \$10,500 Rock River donor back to the \$64,000 valued Circle A and C&H Cattle Co donor Davis Blackbird 7038.
- Her sire, Sitz Upward 307R was the \$85,000 top selling bull of a past Sitz Sale that went on to become a valued member of the Genex/CRI stud. In the twelve years since his birth he has earned Pathfinder® status and his name has become synonymous with unparalleled growth and function.



RRR Blackbird X22 • Lot 6

## 6A AA Denver Chief

Born: 03/23/16 18279773 Tattoo: 646 Bull

EXAR Upshot 0562B  
EXAR Denver 2002B  
17160560 Exar Royal Lass 1067

Sitz Upward 307R #  
EXAR Barbara T020 #  
EXAR 263C #  
BR Royal Lass 19-132  
Connealy Onward #  
Sitz Henrietta Pride 81M  
B/R New Design 323 #  
Davis Blackbird 7038

Sitz Upward 307R #  
RRR Blackbird X22  
16696244 DTA Blackbird 339

PRODUCTION EPDs				MATERNAL EPDs			\$ VALUES				
CED	BW	WW	YW	CEM	Milk	SEN	SW	SF	SG	SB	
I+8	I+2.2	I+53	I+99	I+10	I+27	-16.73	+44.02	+59.95	+43.75	+146.57	
CARCASS	CW	I+47	.05	MARB	I+.80	.05	REA	I+.89	.05	FAT	I+.018 .05

- Dam's Production: BR 4@98 and NR 4@95.
- EXAR Denver 2002B was the lead bull in the Grand Champion Carload of Bulls at the 2013 NWSS. He set a record price in the breed when he sold one-third semen interest for \$340,000 at the 2013 Express Ranch Sale.



AA Denver Chief • Lot 6A

## 6B AA Sitz Top Game Chief

Born: 02/27/15 18276711 Tattoo: 645 Bull

GDAR Game Day 449 #  
Sitz Top Game 561X  
16559105 Sitz Pride 88T #

Boyd New Day 8005 #  
G D A R Miss Wix 474 #  
Connealy Onward #  
Sitz Pride 46P  
Connealy Onward #  
Sitz Henrietta Pride 81M  
B/R New Design 323 #  
Davis Blackbird 7038

Sitz Upward 307R #  
RRR Blackbird X22  
16696244 DTA Blackbird 339

PRODUCTION EPDs				MATERNAL EPDs			\$ VALUES				
CED	BW	WW	YW	CEM	Milk	SEN	SW	SF	SG	SB	
+7	+1.8	+50	+97	+7	+30	-20.00	+44.19	+58.39	+41.99	+144.54	
CARCASS	CW	I+47	.05	MARB	I+.67	.05	REA	I+1.12	.05	FAT	I+.027 .05

- Individual performance: BW 80 lbs, BWR 96, 205 day wt 799 lbs WWR 94.
- Dam's Production: BR 4@98 and NR 4@95.
- This bull is an excellent herd sire prospect. His reasonable calving ease EPD, and high ranking carcass EPDs culminate in a \$B value in the top 10% of non-parent bulls. He is long sided, extremely thick muscled and attractive on the move.
- His sire, Sitz Top Game 561X is a rapid growth sire utilized aggressively in the EXAR program. He is siring muscle, feet and leg conformation and end-product value verified by his \$B value in the top 1%.



AA Sitz Top Game Chief • Lot 6B



# The Angus Acres Complete Herd Dispersion



**EXAR Blackcap 3856 • Lot 7**

**7**

## EXAR Blackcap 3856

Born: 03/18/13 +17490310 Tattoo: 3856 Cow

Dameron First Class  
EXAR Classen 1422B  
16915162 EXAR Princess 2006

S A V Bismarck 5682 #

V A R Blackcap 0081  
16581578 Limseone Blackcap S710

EXG RS First Rate S903 R3  
Dameron Northern Miss 3114  
Exar Lutton 1831 #  
Greens Princess 1012  
G A R Grid Maker #  
S A V Abigale 0451  
Isu Imaging Q 9111 #  
SH Blackcap 706 491

PRODUCTION EPDs				MATERNAL EPDs			S VALUES					
CED	BW	WW	YW	CEM	Milk	SEN	SW	SF	SG	SB		
+7	+2.2	+45	+87	+12	+19	+7.67	+37.52	+53.08	+37.28	+103.22		
CARCASS	CW	+23	.19	MARB	+48	.29	REA	+60	.26	FAT	-.011	.29

- Will be bred by sale day to WR Journey – 1X74.
- Dam's Production: BR 3@100, NR 3@100 and YR 2@102.
- This attractive cow has been used as a recipient to date, however she possesses a pedigree that merits the attention of serious cattlemen.
- She blends multiple generations of show ring accomplishment through the noted son of "First Class", EXAR Classen 1422B, a son of a Denver champion out of a daughter of a Denver champion who is a sister to a Denver Reserve champion.



**AA RB Tour of Duty 217 • Lot 7A**

**7A**

## AA RB Tour of Duty 217

Born: 03/20/16 +18548678 Tattoo: 217 Bull

Werner War Party 2417 #  
R B Tour Of Duty 177  
16984170 B A Lady 6807 305

RR Cork Predestined 5042

EXAR Stephanie 969  
16639509 RF Stephanie 6313

Connealy Onward #  
BAAR USA Lady Jaye 489  
Vermilion Dateline 7078 #  
G D Lady Hi Flyer 302  
G A R Predestined #  
B A A R Primrose L016  
Baldrige Next N401  
KG Stephanie 452

PRODUCTION EPDs				MATERNAL EPDs			S VALUES					
CED	BW	WW	YW	CEM	Milk	SEN	SW	SF	SG	SB		
I+10	I+1.1	I+59	I+104	I+13	I+27	-10.71	+62.31	+63.92	+42.80	+152.93		
CARCASS	CW	I+52	.05	MARB	I+.66	.05	REA	I+.79	.05	FAT	I-.033	.05

- Dam's Production: BR 2@94, NR 2@101 and YR 1@98.



**EXAR Stephanie 969**  
Dam of Lots 7A and 7B

**8**

## 3 Frozen Embryos

Stored at Trans Ova Genetics, Sioux Center IA

Sire: R B Tour Of Duty 177 + (16984170)

SIRE'S EPDs										
CED	BW	WW	YW	CEM	Milk	SEN	SW	SF	SG	SB
+6	+2.3	+67	+121	+11	+36	-32.61	+69.40	+92.92	+40.45	+158.31

**9**

## 2 Frozen Embryos

Stored at Trans Ova Genetics, Sioux Center IA

Sire: EXAR Denver 2002B (17160560)

SIRE'S EPDs										
CED	BW	WW	YW	CEM	Milk	SEN	SW	SF	SG	SB
+8	+2.5	+67	+119	+8	+34	-29.14	+67.79	+89.48	+52.56	+174.59

**10**

## 2 Frozen Embryos

Stored at Trans Ova Genetics, Sioux Center IA

Sire: Connealy Consensus 7229 # (16447771)

RR Cork Predestined 5042  
EXAR Stephanie 969  
16639509 RF Stephanie 6313

G A R Predestined #  
B A A R Primrose L016  
Baldrige Next N401  
KG Stephanie 452

SIRE'S EPDs										
CED	BW	WW	YW	CEM	Milk	SEN	SW	SF	SG	SB
+4	+1.7	+57	+96	+4	+26	+20.09	+86.37	+51.43	+39.40	+96.87
DAM'S EPDs										
CED	BW	WW	YW	CEM	Milk	SEN	SW	SF	SG	SB
I+10	I+1.1	I+59	I+104	I+13	I+27	-10.71	+62.31	+63.92	+42.80	+152.93

- His donor dam came to Angus Acres as the \$10,000 feature in the 2013 Express Ranches "Big Event" Sale. Her progeny in that same sale included a \$30,000 ½ interest Consensus 7229 daughter selected by Widholm Family Cattle at Clifton, IL and her \$9000 full sister that stood at the leg of our featured donor chosen by Three Trees Ranch, Sharpsburg, GA.
- EXAR Stephanie 969 has a tremendous EPD portfolio ranking in the elite top 2% or better for CED, BW, WW, YW, CEM, CW and SB.
- A maternal sister to lots 7A and 7B in the Express Ranches program produced sons in the EXAR Fall Bull Sale selling for \$11,500, \$10,500 and \$10,000. That cow also produced the lead-off, Lot 1, top-selling bred heifer in the 2015 Big Event Sale.
- The sire, "Tour of Duty" was the record-selling bull of the Minnesota Bull Test selected by Crouch Angus Valley who became a top-selling bull at ABS and ORigen. Tour of Duty is a full brother to RB Lady Party 192-305 who topped the 2015 NWSS Sale at \$152,000.



# The Angus Acres Complete Herd Dispersion



**AA Mercer Blackwind Lady 8139 • Lot 11**

## 11 AA Mercer Blackwind Lady 8139

**Born:** 02/12/09    **16325807**    **Tattoo:** 8139    **Cow**

Twin Valley Precision E161 #  
 BR Midland 13898124 BR Royal Lass 7036-19  
 Bon View New Design 1407 #  
**AA Mercer Blackwind Lady 2**  
 14681327 AA Mercers Blackwind Lady

G A R Precision 1680 #  
 W C C Blackcap C9  
 S A F Neutron #  
 S A F Royal Lass 7036 #  
 B/R New Design 036 #  
 Bon View Pride 664  
 Twin Valley Precision E161 #  
 Aa Mercers Blackwind Ladyfair

PRODUCTION EPDs				MATERNAL EPDs			\$ VALUES					
CED	BW	WW	YW	CEM	Milk	SEN	SW	SF	SG	SB		
+7	+2.0	+35	+67	+11	+17	+10.85	+20.91	+15.13	+47.61	+94.20		
CARCASS	CW	+20	.22	MARB	+.84	.24	REA	+.39	.28	FAT	-.024	.24

- AI bred on 7/23/2016 to Connealy Black Granite. Vet examined safe, due 5/1/2017.
- Production: BR 3@97 and NR 3@99.
- She is DDF.



**Connealy Black Granite**  
Service sire of Lot 11

- ALS Angus, Danville IL selected her 2015 daughter by Upshot while Jason Smith, Nichols, Iowa purchased her 2014 Consensus daughter. Her 2013 son sold to Sharon Bauer, Spalding, NE.
- Sired by BR Midland, a true superstar of the breed. Midland first gained national attention as the \$210,000 top selling bull of the 2002 Midland Bull Test and today has in excess of 13,000 progeny with a progeny IMF ratio of 107 and RE ratio 101.
- Her service sire, Connealy Black Granite was an \$80,000 feature of the 2012 Connealy Spring Bull Sale and the favored son of Consensus in the offering. He currently boasts \$value indexes in the top 20% or better for \$W, \$G, \$YG and \$B. Sons of Black Granite comprised the three top selling bulls of the 2014 Hilltop Angus Bull Sale in Montana at \$17,500; \$17,500; and \$11,000.

## 11A AA VAR Ranger Lad

**Born:** 03/01/16    **18548675**    **Tattoo:** 1396    **Bull**

A A R Ten X 7008 S A #  
**VAR Ranger 3008**  
 17455083 Sandpoint Blackbird 8809

BR Midland #  
**AA Mercer Blackwind Lady 8139**  
 16325807 AA Mercer Blackwind Lady 2

Mytty In Focus #  
 A A R Lady Kelton 5551 #  
 Connealy Onward #  
 Riverbend Blackbird 4301  
 Twin Valley Precision E161 #  
 BR Royal Lass 7036-19  
 Bon View New Design 1407 #  
 AA Mercers Blackwind Lady

PRODUCTION EPDs				MATERNAL EPDs			\$ VALUES					
CED	BW	WW	YW	CEM	Milk	SEN	SW	SF	SG	SB		
I+6	I+1.5	I+53	I+97	I+10	I+27	-15.81	+47.22	+56.24	+49.74	+138.52		
CARCASS	CW	I+39	.05	MARB	I+.88	.05	REA	I+.68	.05	FAT	I-.035	.05

- Dam's Production: BR 3@97 and NR 3@99.



**AA VAR Ranger Lad • Lot 11A**



**VAR Ranger 3008**  
Sire of Lot 11A

- His sire, VAR Ranger 3008 is a maternal brother to VAR Reserve and VAR Generation and is considered a top son of AAR Ten X from the famed Sandpoint Blackbird 8809 who has produced \$4 million in progeny sales in four years.



# The Angus Acres Complete Herd Dispersion



AA Mercer Elba 8793 • Lot 12



## AA Mercer Elba 8793

Born: 04/02/13 17542506 Tattoo: 8793 Cow

Exar Lutton 1831 #  
**EXAR Wanted 9732B**  
 16256589 Twin Eagles Blackbird 174K  
 Riverbend Mile High 3718 #  
**AA Mercer Elba 2879**  
 16336362 AA Mercers Elba 287

Northern Improvement 4480 GF #  
 Exar Saras Dream 9809  
 Twin Valley Precision E161 #  
 Summitcrest Blackbird F161  
 Bon View New Design 1407 #  
 G A R Precision 1919 #  
 Rito 112 of 2536 Rito 616 #  
 J B C Missie 504

PRODUCTION EPDs				MATERNAL EPDs			S VALUES					
CED	BW	WW	YW	CEM	Milk	SEN	SW	SF	\$G	\$B		
+6	+2.6	+45	+69	+9	+28	-7.38	+41.88	+16.49	+41.07	+112.78		
CARCASS	CW	+30	.15	MARB	+67	.18	REA	+24	.21	FAT	-038	.19

- AI bred on 6/1/2016 to WR Journey – 1X74. Vet examined safe, due 3/10/2017.
- Production: BR 1@106 and NR 1@106.
- Dam's production: BR 5@102, NR 5@100 and IMF 1@107.
- This young cow posted individual performance that included a BWR 98, WWR 102 with an astonishing IMF measurement of 7.38% to ratio 107.
- Her sire, EXAR Wanted 9732B is a calving ease sire that ranks in the top 15% for CED also transmitting the same outstanding visual integrity that helped him claim Grand Champion Bull laurels at the 2011 American Royal and Reserve at the 2012 NAILE.



AA Denver Star • Lot 12A



## AA Denver Star

Born: 03/25/16 18548680 Tattoo: 7936 Bull

EXAR Upshot 0562B  
**EXAR Denver 2002B**  
 17160560 Exar Royal Lass 1067  
 EXAR Wanted 9732B  
**AA Mercer Elba 8793**  
 17542506 AA Mercer Elba 2879

Sitz Upward 307R #  
 EXAR Barbara T020 #  
 EXAR 263C #  
 BR Royal Lass 19-132  
 Exar Lutton 1831 #  
 Twin Eagles Blackbird 174K  
 Riverbend Mile High 3718 #  
 AA Mercers Elba 287

PRODUCTION EPDs				MATERNAL EPDs			S VALUES					
CED	BW	WW	YW	CEM	Milk	SEN	SW	SF	\$G	\$B		
I+7	I+2.6	I+56	I+94	I+9	I+31	-20.06	+53.00	+48.58	+46.39	+139.68		
CARCASS	CW	I+42	.05	MARB	I+.84	.05	REA	I+.67	.05	FAT	I-.016	.05

- Dam's Production: BR 1@106 and NR 1@106.
- This well-patterned herd sire prospect posts a balanced EPD profile and excels in carcass traits where he records Marb, \$G, \$QG and \$B values in the top 15% or better.



AA EXAR Upshot Focus • Lot 12B



## AA EXAR Upshot Focus

Born: 04/25/15 18276716 Tattoo: 7935 Bull

Sitz Upward 307R #  
**EXAR Upshot 0562B**  
 16541214 EXAR Barbara T020 #  
 EXAR Wanted 9732B  
**AA Mercer Elba 8793**  
 17542506 AA Mercer Elba 2879

Connealy Onward #  
 Sitz Henrietta Pride 81M  
 Isu Imaging Q 9111 #  
 LCC Mc Henry Barbar MG382  
 Exar Lutton 1831 #  
 Twin Eagles Blackbird 174K  
 Riverbend Mile High 3718 #  
 AA Mercers Elba 287

PRODUCTION EPDs				MATERNAL EPDs			S VALUES					
CED	BW	WW	YW	CEM	Milk	SEN	SW	SF	\$G	\$B		
+5	+3.0	+54	+91	+8	+29	-15.87	+48.25	+44.53	+42.60	+122.94		
CARCASS	CW	I+35	.05	MARB	I+.69	.05	REA	I+.78	.05	FAT	I+.008	.05

- Individual performance: BW 75 lbs, BWR 106, 205 day wt 885 lbs, WWR 106.
- Dam's Production: BR 1@106 and NR 1@106.
- His sire, EXAR Upshot 0562B has transitioned from a crowd favorite at the 2011 National Western to an outstanding performance sire with carcass merit in the ABS roster.



# The Angus Acres Complete Herd Dispersion

## 13 AA Mercer Pride 143 [DDC]

**Born:** 01/26/13      **17542502**      **Tattoo:** 143      **Cow**

S A V Providence 6922 #  
 S A V Prosperity 9131  
 16396523 S A V Emblynette 3123 #

KMK Werner TA Cow Maker 5003  
 ACF Pride 9005  
 16488809 Werner Lemmon Pride P270

S A V 004 Predominant 4438 #  
 S A V May 7238  
 B C C Bushwacker 41-93 #  
 S A V Emblynette 1177 #  
 Rito 112 of 2536 Rito 616 #  
 G A R New Design 2609  
 S A V 8180 Traveler 004 #  
 Lemmon Pride G804

PRODUCTION EPDs				MATERNAL EPDs			\$ VALUES					
CED	BW	WW	YW	CEM	Milk	SEN	SW	SF	SG	SB		
+3	+2.8	+55	+94	+9	+28	-15.83	+48.25	+49.29	+39.29	+129.24		
CARCASS	CW	I+40	.05	MARB	I+.59	.05	REA	I+.69	.05	FAT	I-.010	.05

- AI bred 9/20/2016 to AAR Ten X 7008 SA. Vet examined safe, due 6/29/2017.
- Production: BR 1@106 and NR 1@107.
- Her sire, SAV Prosperity 9131 is a Select Sires feature and a leader for performance and maternal value. His dam comes from six consecutive generations of Pathfinders®. His daughters are top production cows with abundant milk and quality udders.
- Developmental Duplication Carrier (DDC).



AA Mercer Pride 143 • Lot 13

## 13A AA VAR Generation Leader [DDP]

**Born:** 03/01/16      **18548676**      **Tattoo:** 1436      **Bull**

Connealy Consensus 7229 #  
 V A R Generation 2100  
 17171587 Sandpoint Blackbird 8809

S A V Prosperity 9131  
 AA Mercer Pride 143  
 17542502 ACF Pride 9005

Connealy Consensus  
 Blue Lilly of Conanga 16  
 Connealy Onward #  
 Riverbend Blackbird 4301  
 S A V Providence 6922 #  
 S A V Emblynette 3123 #  
 KMK Werner TA Cow Maker 5003  
 Werner Lemmon Pride P270

PRODUCTION EPDs				MATERNAL EPDs			\$ VALUES			
CED	BW	WW	YW	CEM	Milk	SEN	SW	SF	SG	SB
I+5	I+2.2	I+60	I+107	I+9	I+37	-34.76	+59.05	+69.88	NA	NA

- Dam's Production: BR 1@106 and NR 1@107.
- This bull has a massive amount of rib and volume with structural correctness and muscle mass.
- His sire, VAR Generation 2100 is a \$500,000 valued, and one of the dominant sons of the \$440,000 Vintage and Herbst donor, Sandpoint Blackbird 8809 that has over \$4 million in progeny sales. Noteworthy siblings to Generation include the \$330,000 ½ interest VAR Frontier 3011, the ABS featured sire, VAR Reserve 1111 and donor dams in the breed's most prominent breeding programs.



AA VAR Generation Leader • Lot 13A

## 13B AA EXAR Upshot King [DD]

**Born:** 04/05/15      **18276713**      **Tattoo:** 1435      **Bull**

Sitz Upward 307R #  
 EXAR Upshot 0562B  
 16541214 EXAR Barbara T020 #

S A V Prosperity 9131  
 AA Mercer Pride 143  
 17542502 ACF Pride 9005

Connealy Onward #  
 Sitz Henrietta Pride 81M  
 Isu Imaging Q 9111 #  
 LCC Mc Henry Barbar MG382  
 S A V Providence 6922 #  
 S A V Emblynette 3123 #  
 KMK Werner TA Cow Maker 5003  
 Werner Lemmon Pride P270

PRODUCTION EPDs				MATERNAL EPDs			\$ VALUES			
CED	BW	WW	YW	CEM	Milk	SEN	SW	SF	SG	SB
+3	+3.1	+59	+103	+8	+29	-21.35	+50.12	+63.08	NA	NA

- Individual performance: BW 76 lbs, BWR 106, 205 day wt 895 lbs, WWR 107.
- Dam's Production: BR 1@106 and NR 1@107.
- This strong-aged herd sire prospect ranks in the top 15% or better for WW, YW, Milk and SF among non-parent bulls.



AA EXAR Upshot King • Lot 13B



# The Angus Acres Complete Herd Dispersion



AA Mercer Jilt 113 • Lot 14

14

## AA Mercer Jilt 113

Born: 04/02/13 17542501 Tattoo: 113 Cow

Exar Lutton 1831 #  
**EXAR Wanted 9732B**  
 16256589 Twin Eagles Blackbird 174K  
 B/R New Frontier 095 #  
**C B Jilt 610**  
 15437020 Summitcrest Jilt 146K

Northern Improvement 4480 GF #  
 Exar Saras Dream 9809  
 Twin Valley Precision E161 #  
 Summitcrest Blackbird F161  
 B/R New Design 036 #  
 White Fence Pride H1  
 Famous 7001 #  
 Summitcrest Jilt 065F #

PRODUCTION EPDs				MATERNAL EPDs			\$ VALUES					
CED	BW	WW	YW	CEM	Milk	SEN	SW	SF	SG	SB		
+4	+3.9	+40	+63	+9	+28	-2.12	+34.79	+5.03	+44.03	+104.72		
<b>CARCASS</b>	<b>CW</b>	+27	.14	<b>MARB</b>	+63	.16	<b>REA</b>	+36	.19	<b>FAT</b>	-.068	.16

- AI bred on 6/1/2016 to VAR Generation 2100. Vet examined safe, due 3/10/2017.
- Production: BR 1@108 and NR 1@111.
- Dam's Production: BR 5@102 and NR 5@102.
- Her 2015 daughter by "Denver" was selected by Dean and Marcalene Seaba, Sigourney IA.
- Her sire, EXAR Wanted 9732B is a calving ease sire that ranks in the top 15% for CED also transmitting the same outstanding visual integrity that helped him claim Grand Champion Bull laurels at the 2011 American Royal and Reserve at the 2012 NAILE.



AA Mercer Jilt 1136 • Lot 14A

14A

## AA Mercer Jilt 1136

Born: 03/02/16 18548677 Tattoo: 1136 Cow

Connealy Consensus  
**Connealy Consensus 7229**  
 16447771 Blue Lilly of Conanga 16  
 EXAR Wanted 9732B  
**AA Mercer Jilt 113**  
 17542501 C B Jilt 610

KMK Alliance 6595 I87 #  
 Blinda of Conanga 004  
 Woodhill Admiral 77K #  
 Blue Cash of Conanga 6020  
 Exar Lutton 1831 #  
 Twin Eagles Blackbird 174K  
 B/R New Frontier 095 #  
 Summitcrest Jilt 146K

PRODUCTION EPDs				MATERNAL EPDs			\$ VALUES					
CED	BW	WW	YW	CEM	Milk	SEN	SW	SF	SG	SB		
I+4	I+2.8	I+49	I+80	I+7	I+27	-8.16	+44.37	+28.32	+44.79	+101.40		
<b>CARCASS</b>	<b>CW</b>	I+24	.05	<b>MARB</b>	I+.83	.05	<b>REA</b>	I+.54	.05	<b>FAT</b>	I+.014	.05

- Dam's Production: BR 1@108 and NR 1@111.
- Grandam's Production: BR 5@102 and NR 5@102.
- Her sire, Connealy Consensus 7229 was the top sire for registrations in the breed for 2014 by more than 2000 head. He sires calves with modest birth weights that grow into high performance cattle with abundant muscling. Consensus is a balanced trait sire with over 15,000 progeny proving a rare combination of a +20.09 SEN and a +86.37 SW.



EXAR Princess 2852 • Lot 15

15

## EXAR Princess 2852 [OHP-DDF]

Born: 04/13/12 +17226664 Tattoo: 2852 Cow

Connealy Consensus  
**Connealy Consensus 7229**  
 16447771 Blue Lilly of Conanga 16  
 Basin Franchise P142 #  
**Exar Princess 7272**  
 15661269 WK Princess 1194

KMK Alliance 6595 I87 #  
 Blinda of Conanga 004  
 Woodhill Admiral 77K #  
 Blue Cash of Conanga 6020  
 C A Future Direction 5321 #  
 Basin Chloe 812L  
 Bon View New Design 1407 #  
 WK Princess 8401 #

PRODUCTION EPDs				MATERNAL EPDs			\$ VALUES					
CED	BW	WW	YW	CEM	Milk	SEN	SW	SF	SG	SB		
+8	+0.8	+58	+96	+9	+25	-2.24	+65.16	+54.93	+33.83	+111.42		
<b>CARCASS</b>	<b>CW</b>	+31	.26	<b>MARB</b>	+73	.35	<b>REA</b>	+71	.32	<b>FAT</b>	+088	.34

- She is carrying the ET mating of RRR Bashra 3140 and EXAR Denver 2002B that is due on 1/5/2017. Refer to Lot 5.
- Dam's production: 2@99, NR 2@108 and YR 2@110.
- This cow earned her admittance into the Angus Acres breeding program with individual performance that featured a BWR 93, WWR 107 and YWR 105.
- Her sire, Connealy Consensus 7229 is one of the most popular young sires in the commercial and registered business. He is a low birth weight bull whose sons are making their way into AI studs and his daughters are topping sales nationwide.



# The Angus Acres Complete Herd Dispersion

## 16 AA Mercer Barbara 1260 [DDF]

Born: 09/23/10 +16788647 Tattoo: 1260 Cow

B/R New Design 036 #  
G A R Predestined  
13395344 G A R Ext 4206 #

Gardens Prime Time #  
Summitcrest Barbara 1L70  
13907942 Summitcrest Barbara 0B74 #

V D A R New Trend 315 #  
B/R Blackcap Empress 76  
N Bar Emulation EXT #  
G A R 6807 Traveler 1432  
R R Traveler 5204 #  
Green Garden Susie 1246 S1 #  
Hyline Nickel #  
Summitcrest Barbara 0X60

PRODUCTION EPDs				MATERNAL EPDs			\$ VALUES					
CED	BW	WW	YW	CEM	Milk	SEN	\$W	\$F	\$G	\$B		
+1	+3.2	+39	+72	+7	+23	2.08	+28.44	+17.72	+41.78	+96.28		
CARCASS	CW	I+25	.05	MARB	I+.97	.05	REA	I+.28	.05	FAT	I+.039	.05

- AI bred 7/23/2016 to Connealy Black Granite. Vet examined safe, due 5/1/2017.
- Her donor dam, is a maternal sister to Summitcrest Prime Cut 1G42, the \$125,000 Stevenson/Basin herdsire. "1L70" was the \$11,000 feature in the 2004 Summitcrest Fall Female Sale in Ohio, then she was selected by Angus Acres as the Lot 75 feature of the 2005 Woodlawn Angus Dispersion. A maternal sister to the donor dam was the \$25,000 ½ interest top selling female of the 2000 Summitcrest offering while another sister was the \$20,000 top seller at the 2001 Summitcrest Sale.
- Her 2014 son sold to Tom Welsh, Atkinson, NE.
- Her maternal sister sells as Lot 3



AA Mercer Barbara 1260 • Lot 16

## 17 AA Mercer Elba 2879 [AMF-DDF-OSF]

Born: 03/23/09 16336362 Tattoo: 2879 Cow

Bon View New Design 1407 #  
Riverbend Mile High 3718  
14512407 G A R Precision 1919 #

Rito 112 of 2536 Rito 616 #  
AA Mercers Elba 287  
15717428 J B C Missie 504

B/R New Design 036 #  
Bon View Pride 664  
G A R Precision 1680 #  
G A R Ext 544  
Rito 616 of 4B20 6807 #  
G A R Precision 2536  
EXAR New Look 2971 #  
J B C Missie 704

PRODUCTION EPDs				MATERNAL EPDs			\$ VALUES					
CED	BW	WW	YW	CEM	Milk	SEN	\$W	\$F	\$G	\$B		
-1	+3.5	+47	+76	+7	+27	-11.25	+35.76	+29.10	+43.15	+129.21		
CARCASS	CW	+36	.28	MARB	+.68	.35	REA	+.53	.34	FAT	-.033	.36

- AI bred 7/23/2016 to WR Journey – 1X74. Vet examined safe, due 5/1/2017.
- Production: BR 5@102, NR 5@100 and IMF 1@107.
- Dam's production: BR 2@99, NR 2@102, IMF 1@121 and RE 1@112.
- Sons of this cow have been selected by Curt Mahony, O'Neill, NE and Junior Young, O'Neill, NE.
- Her 2013 daughter also sells as Lot 9.
- The service sire, WR Journey-1X74 has become an Angus phenomena this year offering an unmatched combination of calving ease, accelerated performance, docility and end product excellence. He ranks among the elite bulls of the breed for CED, BW, WW, YW, RADG, DMI, Doc, CW, Marb, RE, \$W, \$F, \$G and \$B.



AA Mercer Elba 2879 • Lot 17

## 18A 3 Frozen Embryos

Stored at Trans Ova Genetics, Sioux Center IA

## 18B 2 Frozen Embryos

Stored at Trans Ova Genetics, Sioux Center IA

Bon View New Design 1407 #  
EXAR New Look 2971 #+  
14230122 N Bar Primrose 2424

B/R New Frontier 095 #+  
AA Mercers Black Lass 2993  
14681325 AA Mercers Valentine Lass

B/R New Design 036 #  
Bon View Pride 664  
Emulation 31 #  
Primrose N Bar 9962  
B/R New Design 036 #  
White Fence Pride H1  
Bon View Bando 598 #  
Woodhill Lass 754-127

SIRE'S EPDs										
CED	BW	WW	YW	CEM	Milk	SEN	\$W	\$F	\$G	\$B
+5	+2.2	+40	+79	+12	+21	-6.89	+19.79	+51.08	+38.46	+105.49
DAM'S EPDs										
CED	BW	WW	YW	CEM	Milk	SEN	\$W	\$F	\$G	\$B
+4	+1.3	+42	+70	+10	+23	+1.69	+38.81	+15.63	+33.61	+108.94

- The donor dam first identified herself as a standout in her contemporary group boasting individual performance highlighted by a BWR 96, WWR 103, IMF ratio 113, and REA ratio 109. She stems from the same productive cow family that produced Woodhill Admiral 77K, Woodhill Combo 626-344 and the Angus Acres donor dam, Baldrige Lass R806.
- The donor dam has placed 28 progeny in registered herds in 5 states. Her daughters are valued replacements in the Angus Acres breeding program.
- Embryo sire, EXAR Lutton 1831 is the now-deceased Express Ranches herdsire that sired a slew of show ring championships. With semen rare to almost non-existent his service is highly valued. Lutton in-turn sired Plainview Lutton E102 "Lut" who topped the 2005 Styles Plainview Angus Sale at \$17,500 and has gone on to make Angus history of his own. Lutton is also the grandsire of Dameron First Class.



EXAR New Look 2971  
Sire of Lot 18A and 18B embryos





**FCC Lassie Party D33 • Lot 19**



**RB Lady Party 192-305**  
\$152,000 paternal half sister to Lot 19

- Her dam was a \$4000 feature in the 2014 Gaffney Family Cattle Female Sale selected by Faust Cattle Company. Used with enthusiasm in the Crouch Angus Valley program, she descends from a prolific dam that produced the second top-selling bull of the 2013 Hawkeye Country Sale.
- One maternal sister serves in the Crouch breeding program and one is retained at Faust Cattle Co.
- Her sire, Werner War Party 2417 is a Select Sires featured stud with unquestioned growth and phenotypic attributes. He offers high-end growth and milk and competes near the top for both \$W and \$B. "War Party" sired the \$152,000 top-selling lot of the 2015 National Western Foundation Female Sale for Gaffney Family Cattle.
- This heifer is long, correct and wide based with abundant muscling. She has a future as a club project and a promising career in any herd.

**19 FCC Lassie Party D33 [DDP]**

Born: 02/09/16 18608871 Tattoo: D33 Cow

Connealy Onward #  
Werner War Party 2417 #+  
16004857 BAAR USA Lady Jaye 489 +

Connealy Lead On #  
Altune of Conanga 6104  
B A R Ext Traveler 205 #  
Cra Lady Jaye 608 498 S Easy  
Quaker Hill Objective 3J15 #  
N C R Designs Erica 1407-014  
Gannon New Frontier C801  
Gannon Lassie X116

GSRT Ridgetop 828  
CAV Ridgetop 008  
17118874 Gannon Lassie F618 16428187

PRODUCTION EPDs				MATERNAL EPDs			\$ VALUES			
CED	BW	WW	YW	CEM	Milk	SEN	\$W	\$F	\$G	\$B
I+6	I+0.7	I+54	I+93	I+8	I+34	-23.92	+57.70	+48.17	NA	NA

- BW 78 lbs.
- Dam's Production: BR 1@105 and NR 1@107.

**20 FCC Everelda Entense D325**

Born: 02/06/16 18608702 Tattoo: D325 Cow

Werner War Party 2417 +  
R B Tour Of Duty 177 +  
16984170 B A Lady 6807 305 +  
G A R New Design 5050 #+  
Bear Creek Entense U803 +  
16168041 BT Everelda Entense 567H +

Connealy Onward #  
BAAR USA Lady Jaye 489 +  
Vermilion Dateline 7078 #  
G D Lady Hi Flyer 302 +  
B/R New Design 036 #  
G A R Precision 706  
Leachman Right Time #+  
Sitz Everelda Entense 1905

PRODUCTION EPDs				MATERNAL EPDs			\$ VALUES					
CED	BW	WW	YW	CEM	Milk	SEN	\$W	\$F	\$G	\$B		
I+7	I+1.7	I+56	I+103	I+9	I+33	-24.56	+55.94	+70.30	+38.89	+132.37		
CARCASS	CW	I+38	.05	MARB	I+.53	.05	REA	I+.58	.05	FAT	I-.038	.05

- Dam's Production: BR 2@102, NR 2@95, IMF 4@118.



**FCC Everelda Entense D325 • Lot 20**



**Bear Creek Entense U803**  
Dam of Lot 20

- This heifer is the natural-born daughter of the Faust Cattle Company donor dam that is a direct daughter of the \$100,000 valued BT Everelda Entense 567H, the full sister to legendary maternal and Pathfinder sires, BT Right Time 24J and BT Direction 65D. Her full sisters also include the \$190,000 1/2 interest BT Everelda Entense 57D and \$90,000 BT Everelda Entense 76D.
- The foundation 3rd dam, Sitz Everelda Entense 1905 is considered by many to be the greatest genetic achievement in Montana Angus history.
- Her sire, "Tour of Duty" was the record-selling bull of the Minnesota Bull Test selected by Crouch Angus Valley who became a top-selling bull at ABS and ORigen. Tour of Duty is a full brother to RB Lady Party 192-305 who topped the 2015 NWSS Sale at \$152,000.





# 3 Frozen Embryos (Grade 1)

Stored at *Driven Embryo Service, Decorah, IA*

LCC New Standard #  
**R B Active Duty 010 +**  
16718300 B A Lady 6807 305 +

R B Resolute 1844  
**RB Annie Resolute 1183-367**  
17558186 R B Annie CC&7 1183-187 #

Bon View New Design 1407 #  
LCC Sunset K3118  
Vermilion Dateline 7078 #  
G D Lady Hi Flyer 302 +  
K C F Bennett Absolute  
R B Lady Focus 303-844 +  
SydGen C C & 7 #  
RM Annie 187

### SIRE'S EPDs

CED	BW	WW	YW	CEM	Milk	SEN	SW	SF	SG	SB
+9	+1.5	+66	+121	+9	+28	-20.59	+64.69	+97.18	+27.42	+118.25

### DAM'S EPDs

CED	BW	WW	YW	CEM	Milk	SEN	SW	SF	SG	SB
+10	-0.3	+58	+104	+10	+29	-21.81	+56.33	+65.68	+32.88	+136.24

- The donor dam was selected by Faust Cattle Company at the second annual Riley Brothers Angus Production Sale. She came as the featured daughter of RB Resolute 1844 and first to sell anywhere in the country. She was a standout in her contemporary group posting individual performance that featured a BWR 95 and WWR 113 out of a first-calf heifer.
- The great grandam, RM Annie 187 was selected by Riley Brothers as their first pick at the Michelson Dispersion in Iowa where she was the top indexing heifer in her calf crop.
- The embryo sire, RB Active Duty 010 comes from a cow family that consistently produces sale toppers, herd sires, AI sires and Test Station winners from Montana to Minnesota. This growth powerhouse has enormous capacity and substance. He is one of the thickest ended, deepest bodied, easiest fleshing bulls you will find.
- Maternal grandsire, RB Resolute is a new Angus Sire Alliance graduate that excels at feed efficiency and maternal traits. He is now a feature at ABS Global. Resolute transmits super muscle shape, unbeatable calving ease and maternal value, excelling for CED, BW, WW and Docility.



**RB Annie Resolute 1183-367**  
Donor dam of Lot 21 embryos



**RB Active Duty 010**  
Sire of Lot 21 embryos

Dear Angus Friends,

The Annual Midwest Connection Sale has historically been a showcase of the smaller, exclusive Angus operations that dot the countryside in Iowa and beyond. This year's offering follows that noble tradition and is maybe even more impressive. I had the opportunity to travel over 2000 miles to select and photograph many in this offering and believe me, these represent the very top picks from their respective breeding programs.

The cornerstone of the 2016 Midwest Connection Sale is the Complete Dispersion of the Angus Acres herd. Blaine Shoemaker has been a consistent contributor to past MWC, Hawkeye and National Western Foundation Females Sales and his fellowship in the Angus fraternity has been truly a privilege. Only in a dispersion can you chose from the very foundation of a program of this caliber. The sale offering is further supported by an elaborate presentation of bred heifers, yearling replacement heifers, spring and fall calving cows and pairs, as well as herd sire prospects, breeding age bulls and a fancy set of show heifer prospects. Don't forget that the 2017 National Junior Angus Show will be in Iowa this year. This offering should be competitive.

Livestock HUB stands ready to assist anyone with their livestock marketing needs from catalog design to advertising and social media development. We welcome your pre-sale inquiries and look forward to greeting each of you on December 18th, 2016 in Bloomfield.

Sincerely,

Dave Sweeney  
Christa Nichols



**Dave Sweeney**  
21547 Co. Hwy 527  
Alden, IA 50006  
641-373-4340

**Christa Nichols**  
12265 170th Street  
Alden, IA 50006  
641-373-0342

[livestockhub1@gmail.com](mailto:livestockhub1@gmail.com)  
[www.livestockhub.net](http://www.livestockhub.net)

[facebook.com/livestockhub](https://facebook.com/livestockhub)

[@livestockhub1](https://@livestockhub1)



**Dave Sweeney**



**Christa Nichols**





**Mill Coulee Pridemere 524 • Lot 22**



**Deer Valley All In**  
Service sire of Lot 22

- Her sire, Connealy Capitalist 028 is revered for his phenotypic assets yet has proven to be a world-class calving ease sire. He is one of the most requested Select Sires bulls producing heavy muscled, capacious cattle with visual integrity. Today Capitalist ranks in the top 20% or better for a spectrum including CED, BW, WW, YW, SC, HP, RE and \$W while still ranking in the top 25% for \$EN.
- Her service sire, Deer Valley All In is a Select Sires feature and a full brother to the \$110,000 VAR Discovery 2240. They share a grandam that is the mother of the #1 Marbling bull, GAR Progress. No other son of Ten X can match All In's combination of CED, \$W and \$B.
- Typical of Capitalist offspring, she is a thick, well-muscled bred heifer with an enviable EPD spread and a CED in the top 1%.

**22 Mill Coulee Pridemere 524**

Born: 01/29/2015 18150110 Tattoo: 524 Cow

S A V Final Answer 0035 #  
Connealy Capitalist 028  
16752262 Prides Pita of Conanga 8821

B P F Special Focus 504 #  
Mill Coulee Pridemere 217  
17271779 Mill Coulee Pridemere 724 #

Sitz Traveler 8180 #  
S A V Emulous 8145  
C R A Bextor 872 5205 608 #  
Prides Trav of Conanga 6499  
Mytty In Focus #  
B P F Black Cash 341  
WAR Alliance 9126 6006 #  
R K Pridemere 9982

PRODUCTION EPDs				MATERNAL EPDs			\$ VALUES					
CED	BW	WW	YW	CEM	Milk	SEN	SW	SF	\$G	\$B		
+16	-2.2	+52	+95	+14	+26	-9.22	+55.58	+51.28	+21.92	+113.61		
CARCASS	CW	I+42	.05	MARB	I+.47	.05	REA	I+.65	.05	FAT	I+.088	.05

- AI bred 6/18/2016 to Deer Valley All In. Vet examined safe, due 3/27/2017, carrying a bull calf.
- Dam's Production: BR 2@91, NR 2@100 and YR 2@102.

**23 J M Ranch Barb 260**

Born: 04/17/2012 17285869 Tattoo: 260 Cow

Connealy Danny Boy #  
Connealy Danny 5398  
15150630 Endova of Conanga 858

Connealy Lead On #  
Pitz Barb 8323  
16162565 Pitz Barb 5110

Connealy Timeline #  
Energy of Conanga 4851  
EGL Target 1148  
Endive of Conanga 6860 #  
Connealy Leadtime #  
Eligence Plus of Conanga  
W C C Special Design L309 #+  
Pitz Barb M202

PRODUCTION EPDs				MATERNAL EPDs			\$ VALUES					
CED	BW	WW	YW	CEM	Milk	SEN	SW	SF	\$G	\$B		
+7	+1.2	+58	+100	+4	+15	+5.23	+48.57	+64.65	+42.48	+132.87		
CARCASS	CW	+36	.27	MARB	+.75	.35	REA	+.53	.28	FAT	-.006	.28

- AI bred on 5/6/2016 to Connealy Comrade 1385. Vet examined safe, due 2/12/2017, carrying a heifer calf.
- Production: BR 1@107, NR 1@94.
- Dam's Production: BR 7@103, NR 7@96, YR 6@98, IMF 4@106.



**J M Ranch Barb 260 • Lot 23**



**Connealy Comrade 1385**  
Service sire of Lot 23

- This deep, thick, well-muscled cow stems from a prolific producer that happens to be the #1 \$B daughter of Connealy Lead On in the entire breed. Her progeny include herd sire selections made by Jerry Griffiths, Bloomfield IA; Adam Byrn, Downing MO; Edward Berry, Glenwood MO and Merrill Bracken, Ladoga IN.
- Her sire, Connealy Danny 5398 is a Select Sires favorite for calving ease with great visual integrity.
- The service sire, Connealy Comrade 1385 is a Select Sires feature with documented calving ease and carcass credentials. He ranks in the breed's elite top 1% for CED and Doc as well as the top 5% or better for BW, Marb, \$G and \$QG.





S/A Forever Lady 266-2231 • Lot 24

## 24 S/A Forever Lady 266-2231

Born: 02/23/2011 16991021 Tattoo: 2231 Cow

G A R Grid Maker #+  
S A V Bismarck 5682 #+  
15109865 S A V Abigale 0451  
  
BR Midland #  
S/A Forever Lady 189M-266 15401152  
15109865 S V F Forever Lady 189M +

G D A R Traveler 044 #  
G A R Precision 2536  
Schoenes Fix It 826 #  
S A V Abigale 6062  
Twin Valley Precision E161 #  
BR Royal Lass 7036-19  
B/R New Design 036 #  
G D A R Forever Lady 3078 +

PRODUCTION EPDs				MATERNAL EPDs			\$ VALUES					
CED	BW	WW	YW	CEM	Milk	SEN	SW	SF	SG	SB		
+11	+8	+47	+79	+13	+20	+5.43	+44.20	+41.48	+40.88	+91.72		
CARCASS	CW	+15	.27	MARB	+39	.35	REA	+78	.34	FAT	-070	.36

- Pasture exposed from 4/28/2016 to 6/5/2016 to Hoover Advisor. Vet examined safe and estimated due 2/9/2017.
- Production: BR 4@96, NR 4@103, YR 3@106 RE 2@116 and Fat 2@94.
- Dam's Production: BR 6@97, NR 7@100, YR 3@96 and IMF 5@103.



SAV Bismarck 5682  
Sire of Lot 24

- Her maternal 3rd dam GDAR Forever Lady 3078 is a direct daughter of the renowned GDAR Forever Lady 719 made famous in the Sunny Valley program.
- Her 2015 daughter by Summitrest Complete 1P55 has been retained in the herd, as was her 2013 daughter by EF Complement 8088 who currently posts NR 2@102 and YR 1@102 on AHIR.
- Her 2014 son was selected by Stan Schooler, Floyd Knobs IN.
- Her sire, SAV Bismarck, is a long-time Genex featured sire that was the #2 registration sire in 2012. With high CED and WW values in this bull's performance portfolio, it is no surprise that he boasts a \$W in the top 1% of current sires. Daughters of Bismarck are revered in the industry because they are beautiful, moderate framed, gentle natured cows with impeccable udder quality and optimum milk.

## 25 S/A Lass 243P-2164

Born: 02/16/2014 + 17859519 Tattoo: 2164 Cow

Connealy Onward #  
Sitz Upward 307R #  
14963730 Sitz Henrietta Pride 81M  
  
Feltons Meat Packer 62 #  
Woodhill Lass 1878-243P +  
14792041 Woodhill Lass 344-1878

Connealy Lead On #  
Altune of Conanga 6104  
Sitz Value 7097 #  
Sitz Henrietta Pride 1370  
Finks 5522-6148 #  
Graham N Mistress 8  
2K Impact 612 +  
Woodhill Lass 1172-344

PRODUCTION EPDs				MATERNAL EPDs			\$ VALUES					
CED	BW	WW	YW	CEM	Milk	SEN	SW	SF	SG	SB		
+11	-1	+50	+91	+12	+26	-1.66	+57.06	+36.36	+16.36	+114.20		
CARCASS	CW	+52	.26	MARB	+95	.35	REA	+43	.32	FAT	+144	.35

- Pasture Exposed from 4/28/2016 to 6/5/2016 to Hoover Advisor. Vet examined safe and estimated due 2/13/2017.
- Production: BR 1@106 and NR 1@94.
- Dam's production: BR 8@94, NR 8@98, YR 6@98, IMF 14@101, RE 14@100 and fat 14@94.



S/A Lass 243P 2165 • Lot 25



Hoover Advisor  
Service sire of Lots 24 and 25

- Her dam was a former Strasburg Angus donor with strong calving ease and carcass credentials.
- Her sire, Sitz Upward 307R was the \$85,000 top selling bull of a past Sitz Sale that went on to become a valued member of the Genex/CRI stud. In the twelve years since his birth he has earned Pathfinder status and his name has become synonymous with unparalleled growth and function.
- Her service sire, Hoover Advisor, is a son of Connealy Counselor with a +12 CED, a -1.7 BW EPD and a +1.18 REA. He was Strasburg Angus' selection from the 2015 Hoover Angus Sale.





**JEM-Summit Blackcap 24X • Lot 26**

**26 JEM-Summit Blackcap 24X**

Born: 04/02/2010 +16732928 Tattoo: 24X Cow

C F Right Design 1802 #  
Summitcrest Complete 1P55 #  
14850409 Summitcrest Elba 1M1

Bon View New Design 1407 #  
Vision HF Blackcap 0015 #+  
Vermilion Dateline 7078 #  
Summitcrest Elba 1F43  
G A R Precision 1680 #  
G A R Ext 4927 +  
Bon View New Design 1407 #  
G A R Precision 4519 +

G A R Retail Product #  
G A R Retail Product 836 +  
15463651 G A R 1407 New Design A03 +

PRODUCTION EPDs				MATERNAL EPDs			\$ VALUES					
CED	BW	WW	YW	CEM	Milk	SEN	\$W	\$F	\$G	\$B		
+1	+2.0	+44	+82	+10	+33	-15.94	+44.97	+40.81	+42.60	+115.79		
CARCASS	CW	+29	.24	MARB	+.59	.25	REA	+.85	.29	FAT	-.008	.25

- AI bred 5/17/2016 to PVF Insight 0129. Pasture exposed to MNS Ultimatum 4724 (Red Angus). Vet examined safe, estimated due to AI on 2/23/2017.
- Dam's Production: BR 3@100, NR 3@100, IMF 21@105 and RE 21@100.



**JEM Summit Alice 124A**  
\$6700 daughter of Lot 86

- The 2013 daughter of this cow sold to Ty Shockley, Wheatland, WY in the 2014 Summit Online Female Sale at \$6700. She was the Champion Female at the 2014 Wyoming State Fair and continued her winning ways claiming the Cow/Calf Championship at the 2015 Reno ROV Show.
- Her 2013 daughter is retained in the herd.
- Her donor dam, GAR Retail Product 836 is the foundation donor dam in the joint JEM and Summit Farms Angus embryo transplant venture. 836 progeny have dominated in Iowa show cattle circles for several years. She produced the 2012 Iowa Open Angus Female of the Year, JEM-Summit Blackcap 52Y as well as JEM-Summit High Regard 05X the Grand Champion Bull at the 2011 NILE and the 2011 Iowa Preview Show where 836 was the celebrated Produce-of-Dam winner.

**27 JEM-Summit Blackcap 21X**

Born: 03/04/2010 +16650588 Tattoo: 21X Cow

H S A F Bando 1961 #+  
C J Prestige 25T +15818519  
C J Blackbird 11P

S A F 598 Bando 5175 #+  
J K S Miss Cheyenne 196 +  
TC Freedom 104 #  
H F Blackbird 61H +  
G A R Precision 1680 #  
G A R Ext 4927 +  
Bon View New Design 1407 #  
G A R Precision 4519 +

G A R Retail Product #13395329  
G A R Retail Product 836 +  
15463651 G A R 1407 New Design A03

PRODUCTION EPDs				MATERNAL EPDs			\$ VALUES					
CED	BW	WW	YW	CEM	Milk	SEN	\$W	\$F	\$G	\$B		
+5	+2.3	+43	+82	+8	+22	-.58	+32.79	+37.53	+38.48	+119.08		
CARCASS	CW	+35	.16	MARB	+.63	.19	REA	+.39	.22	FAT	-.015	.19

- AI bred on 10/22/2016 to SAV Resource 1441.
- Production: BR 1@104 and NR 1@95.
- Dam's Production: BR 3@100, NR 3@100, IMF 21@105 and RE 21@100.



**JEM-Summit Blackcap 21X • Lot 27**

**27A Summit D506**

Born: 09/12/16 Pending Tattoo: D506 Bull

- Sire: WOLL SURE FIRE B40 (ASA #2930669)
- BW 80 lbs.



**JEM-Summit High Regard 05X**  
Flush brother to Lot 27A

- A daughter has been selected by Cody Lane Bull, Wilburton, OK at \$3100 and Martin Reynolds, Indianola, IA chose a son at \$3750.
- She stems from the very first flush out of the \$40,000 GAR Retail Product 836 that also produced JEM-Summit High Regard 05X the 2011 NILE Grand Champion Bull that sold in the 2012 NWSS Angus Bull Sale to Currant Creek Angus Ranch, Roundup, MT.
- Sells with a promising Sim/Angus herd bull prospect at side.





**JEM Summit Blackcap 38Y • Lot 28**

**28 JEM Summit Blackcap 38Y**  
 Born: 09/08/11 +17252887 Tattoo: 38Y Cow

Connealy Consensus  
 Connealy Consensus 7229 #  
 16447771 Blue Lilly of Conanga 16

G A R Retail Product #  
 G A R Retail Product 836 +  
 15463651 G A R 1407 New Design A03 +

KMK Alliance 6595 187 #  
 Blinda of Conanga 004  
 Woodhill Admiral 77K #  
 Blue Cash of Conanga 6020  
 G A R Precision 1680 #  
 G A R Ext 4927 +  
 Bon View New Design 1407 #  
 G A R Precision 4519 +

PRODUCTION EPDs				MATERNAL EPDs			\$ VALUES					
CED	BW	WW	YW	CEM	Milk	SEN	SW	SF	SG	SB		
+3	+2.1	+46	+82	+5	+22	+88	+39.62	+34.28	+38.78	+87.97		
CARCASS	CW	I+20	.23	MARB	I+.84	.25	REA	I+.51	.26	FAT	I+.070	.24

- Will be bred prior to sale day to PVF Insight 0129.
- Dam's Production: BR 3@100, NR 3@100, IMF 21@105 and RE 21@100.
- Her donor dam, GAR Retail Product 836 is the foundation donor dam in the joint JEM and Summit Farms Angus embryo transplant venture. 836 progeny have dominated in Iowa show cattle circles for several years. She produced the 2012 Iowa Open Angus Female of the Year, JEM-Summit Blackcap 52Y as well as JEM-Summit High Regard 05X the Grand Champion Bull at the 2011 NILE and the 2011 Iowa Preview Show where 836 was the celebrated Produce-of-Dam winner.
- Her sire, Connealy Consensus 7229 was the top sire for registrations in the breed for 2014 by more than 2000 head. He sires calves with modest birth weights that grow into high performance cattle with abundant muscling. Consensus is a balanced trait sire with over 15,000 progeny proving a rare combination of a +20.09 SEN and a +86.37 SW.
- Sells with a Sim/Angus bull calf at her leg.

**28A Summit D512**  
 Born: 09/16/16 Pending Tattoo: D512 Bull

- Sire: WOLL SURE FIRE B40 (ASA #2930669)
- BW 78 lbs.



**GAR Retail Product 836**  
 Donor dam of Lots 26, 27 and 28



**JEM-Summit Abigail 159A • Lot 29**

**29 JEM-Summit Abigail 159A [DDP]**  
 Born: 05/14/13 17824047 Tattoo: 159A Cow

Exar Lutton 1831 #  
 HCC JEM Desperado  
 16649235 HF Forever Lady 0006 +

B/R Ambush 28 #+  
 G A R 28 Ambush G159 +  
 16503467 G A R Predestined N425 +

Northern Improvement 4480 GF #+  
 Exar Saras Dream 9809  
 Gdar SVF Russ 184B #+  
 S A F Forever Lady 5138 +  
 Rockn D Ambush 1531 #  
 B/R Ruby of Tiffany 8250 +  
 G A R Predestined #  
 G A R Precision 81

PRODUCTION EPDs				MATERNAL EPDs			\$ VALUES					
CED	BW	WW	YW	CEM	Milk	SEN	SW	SF	SG	SB		
+8	+1.9	+56	+99	+12	+28	-18.77	+49.86	+57.79	+37.26	+128.25		
CARCASS	CW	I+40	.05	MARB	I+.62	.05	REA	I+.41	.05	FAT	I-.013	.05

- Will be bred by sale day to Connealy Consensus 7229.
- Production: BR 1@84 and NR 1@113.
- Her 2015 son by Insight posted outstanding individual performance and stands in the Ty Hunt herd at Leon IA.
- Her sire HCC JEM Desperado was bred in the respected Russell Holmes herd at Benton Iowa and became a herd sire for JEM Angus after his highly-applauded selection as Grand Champion Bull at the 2011 Iowa Beef Expo.
- She records an enviable EPD profile that adds up to a \$B value in the top 10% of current dams.
- Sells with a Sim/Angus bull calf at her leg.

**29A Summit D521**  
 Born: 10/02/16 Pending Tattoo: D521 Bull

- Sire: WOLL SURE FIRE B40 (ASA #2930669)
- BW 75 lbs.



**Lot 29 and 29A**

**Connealy Consensus 7229**  
 Sire of Lot 28. Service sire of Lot 29A







**Tri-K Mariel Kalin C80 • Lot 30**



**AAR Ten X 7008 SA**  
Sire of Lot 30

- This Ten X daughter stems from a donor dam that has been a great producer having produced herd sires for Davis Miller, Batavia, IA; Justin Graves, Wellsburg, IA and Brandon Van Loh, Wellsburg, IA.
- This mating really worked. If you like powerful, easy-doing, fault free Angus cows, watch what Kalin turns into. Two flush sisters and a maternal sister are being retained in the herd.
- Her sire, AAR Ten X 7008 SA is an Accelerated Genetics feature that has become the breed's most highly sought "spread" bull. His sons are the top selling sire group in bull sales across the country while his daughters currently post a collective nursing ratio of 104.

## 30 Tri-K Mariel Kalin C80

Born: 11/25/15 +18516660 Tattoo: C80 Cow

Mytty In Focus #  
AAR Ten X 7008 SA #  
15719841 AAR Lady Kelton 5551 #  
  
Silveiras El Capitan 6510  
HL Ms Mariel 9285  
16439653 DF Queen Eva 7285

S A F Focus of E R #  
Mytty Countess 906  
S A V Adaptor 2213  
H S A F Lady Kelton 504B +  
Gambles Hot Rod  
Silveiras Elba 2520 +  
Reins Rito 8E8 483  
D F Queen Eva 217

PRODUCTION EPDs				MATERNAL EPDs			\$ VALUES					
CED	BW	WW	YW	CEM	Milk	SEN	SW	SF	SG	SB		
+10	+2.6	+56	+102	+11	+22	-5.14	+47.42	+60.47	+43.27	+135.37		
CARCASS	CW	+42	.25	MARB	+89	.34	REA	+47	.30	FAT	+005	.32

## 31 Tri-K Klassy Kondo D53

Born: 01/02/16 18516182 Tattoo: D53 Cow

S A V Iron Mountain 8066 #  
S A V Hot Iron 0941 +  
16931321 Champion Hill Georgina 6174 +  
  
Coleman Regis 904  
Tri-K Kaga Klassy A57  
17590393 2 K's Lady Kaga Y23 +

TC Gridiron 258 #  
S A V Madame Pride 3249  
S A V Mandan 5664 #+  
Champion Hill Georgina 3694 +  
S A V Final Answer 0035 #  
Coleman Donna 714 +  
S A F 598 Bando 5175 #+  
ONeills Royal Lady 42 +

PRODUCTION EPDs				MATERNAL EPDs			\$ VALUES					
CED	BW	WW	YW	CEM	Milk	SEN	SW	SF	SG	SB		
+3	+2.8	+58	+98	+8	+21	+96	+53.61	+54.87	+21.55	+110.78		
CARCASS	CW	+39	.19	MARB	+32	.29	REA	+56	.25	FAT	+043	.28



**Tri-K Klassy Kondo D53 • Lot 31**



**SAV Hot Iron 0941**  
Sire of Lot 31

- Here is a heifer with a tremendous future. Have fun showing her then watch what kind of cow she becomes.
- Her sire, SAV Hot Iron 0941 is a feature in the Champion Hill program where he is siring fancy, high performance females, like this one.
- Maternal grandsire Coleman Regis 904 was the \$20,000 top selling bull of the 2010 Coleman Angus Ranch Sale. Today he is a Select Sires feature with astonishing curve-bending credentials and maternal ability backed by the famed Donna cow family. His dam is the \$145,000 1/2 interest, Coleman Donna 714 that headlined the 2011 National Angus Finals Sale.



# 32 Tri-K Marie D54

Born: 01/02/16 Pending Tattoo: 00 Cow

MEYER RANCH 734  
3C MACHO M450 BZ  
2184077 C CROCUS H112 B

MR BLACK GX 6W  
MISS GX 728R  
CIRCLE S LEACHMAN 600U  
3C CROCUS F759 B  
Gambles Hot Rod  
Silveiras Elba 2520 +  
Reins Rito 8E8 483  
D F Queen Eva 217

Silveiras El Capitan 6510  
HL Ms Mariel 9285  
16439653 D F Queen Eva 7285

### SIRE'S EPDs

CE	BW	WW	YW	MCE	Milk	MWW	Stay	CW	YG	MB	REA	API	TI
-1.4	3.9	66.7	90.1	10.9	18.7	52.1	23.8	28.7	-0.40	0.06	0.73	107.9	63.9

### DAM'S EPDs

CED	BW	WW	YW	CEM	Milk	SEN	\$W	\$F	\$G	\$B
+7	+4.1	+46	+81	+10	+16	+8.60	+26.34	+30.87	+22.64	+72.06

- Marie is a picture perfect, Sim/Angus, black baldy show heifer prospect. She is deep bodied and soft with a wonderful disposition. Her mother is one of Dr. Pugh's favorite Angus cows and is the epitome of an easy keeping cow.
- Her sire, 3C Macho M450 BZ is a long-time ABS Simmental feature that is homozygous black and heterozygous polled. Macho has established himself as the proven replacement for Meyer Ranch 734 siring visual appeal and performance.
- Marie is a maternal sister to Lot 30.



Tri-K Marie D54 • Lot 32

# 33 Tri-K Annie Kico Z90

Born: 09/16/12 +17590387 Tattoo: Z90 Cow

S A V Final Answer 0035 #  
SA V Pioneer 7301 #  
15688392 S A V Blackbird 5297

Sitz Traveler 8180 #  
S A V Emulous 8145  
Boyd New Day 8005 #+  
S A V Blackbird 1082  
B/R New Design 036 #  
Bon View Pride 664  
Connealy Leadtime #  
R M Annie 249

Bon View New Design 1407 #  
R M Annie 13  
14510454 R M Annie 11

### PRODUCTION EPDs

CED	BW	WW	YW	CEM	Milk	SEN	\$W	\$F	\$G	\$B
+14	-1.9	+41	+78	+15	+23	+0.3	+40.36	+31.56	+39.25	+107.55

### MATERNAL EPDs

CARCASS	CW	REAR	FAT
+29	.27	.35	.34

### \$ VALUES

REAR	FAT
+0.98	.34

- AI bred to SAV Universal 4038 on 5/18/2016. Vet examined safe, due 2/24/2017.
- Calving interval 2@341 days.
- This cow family has done a tremendous job in the Tri-K program. Her dam has averaged \$4000 on sons to commercial herds across Iowa.
- Her sire, SAV Pioneer 7301 first earned national attention as the \$65,000 top-selling bull in the 2008 SAV Sale and is now a prominent Genex/CRI sire. Pioneer is a high \$W bull with a positive \$EN and is the highest accuracy son of Final Answer in the breed.
- Her service sire, SAV Universal 4038 was the \$200,000 lead-off Lot 1 bull of the 2015 SAV Sale said to be one of the most exciting genetic and visual bulls in the breed. His dam, SAV Blackcap May 4136 is one of the most prolific and influential cows of the modern era, certainly the top income producing cow in the SAV herd with multiple herd sire and AI sire sons.



SAV Universal 4038  
Service sire of Lot 33

# 34 Tri-K Polly Kream Z94

Born: 12/15/12 18106504 Tattoo: Z94 Cow

S A V Efficiency 7056 +  
SA V Efficiency 9681  
16394084 S A V Linette 7161 +

S A V 8180 Traveler 004 #  
Champion Hill Erica 3614 +  
S A V Net Worth 4200 #  
S A V Linette 5143 #  
Emulation N Bar 5522 #  
N Bar Primrose 2424  
Traveler 124 G D A R #  
V D A R Polly 4027 +

N Bar Emulation EXT #  
Murcielago Polly 9266 +  
16524730 Oak Hill Polly 8200 +

### PRODUCTION EPDs

CED	BW	WW	YW	CEM	Milk	SEN	\$W	\$F	\$G	\$B
-5	+3.4	+39	+74	+4	+22	-2.50	+20.85	+24.95	+16.86	+87.67

### MATERNAL EPDs

CARCASS	CW	REAR	FAT
+31	.13	.18	.17

### \$ VALUES

REAR	FAT
+0.25	.17

- AI bred to Dameron C-5 American Classic on 6/2/2016. Vet examined safe, due 3/11/2017.
- Show cattle producers take note here. This beautiful cow has loads of potential for visual appeal and a noble pedigree to enhance salability.
- Her first two calves were both heifers and are currently tightly held in the Tri-K breeding program.
- Her dam blends the greatest maternal genetics the breed has known in the Primrose and Polly lines and EXT and Traveler 124 Pathfinder® sires.
- Her service sire, Dameron C-5 American Classic is a Genex featured sire and a full brother to the renowned show cattle sire, Dameron First Class who is the now-deceased, Triple Crown winner. American Classic is already staking his own claim as the next-generation sire of show ring stature and style.



Dameron C-5 American Classic  
Service sire of Lot 34





**Tri K Karisma Klair A54**  
Donor dam of Lot 35 embryos



**HA Cowboy Up 5405**  
Sire of Lot 35 choice embryos

- The donor dam, Tri-K Karisma Klair A54 is considered the lead cow in the Tri K donor team. She produced a Tour of Duty daughter that genomic tested in the top 10% of the breed for nine different traits.
- HA Cowboy Up 5405 became the sensation of the 2016 bull sale season when he garnered a \$350,000 2/3 interest bid from Express Ranches and Wilks Ranch Texas out of the Hinman Angus Sale. Cowboy Up is a performance powerhouse with an outcross pedigree. He is said to possess great muscle mass and volume with masculinity, representing a prolific cow family going back to the dam of HA Image Maker 0415.
- SAV Real Performance 4876 is a high-performance son of SAV Resource. He is a massive scale-crushing bull with volume, capacity, muscle and off the charts performance numbers. He scanned an 18.3 in ribeye area at a year and earned an IMF ratio of 138. His dam comes from four generations of Pathfinders®.

**35 Selling Choice of 4 Embryos**

Stored at Westwood Embryo, Waverly, IA

Sire: SAV Real Performance 4876 (17923527)

SIRE'S EPDs										
CED	BW	WW	YW	CEM	Milk	SEN	SW	SF	SG	SB
-3	+3.9	+73	+124	-1	+29	-15.08	+75.00	+93.07	+30.44	+173.87

Sire: HA Cowboy Up 5405 (18286467)

SIRE'S EPDs										
CED	BW	WW	YW	CEM	Milk	SEN	SW	SF	SG	SB
+8	+1.7	+75	+136	+9	+27	-20.00	+76.02	+118.96	+22.02	+165.00

Sitz Upward 307R #  
Dam: Tri K Karisma Klair  
17738961 2 K's Total Karisma W003 +

Connealy Onward #  
Sitz Henrietta Pride 81M  
TC Total 410 #  
G A R 1407 New Design 1552 +

DAM'S EPDs										
CED	BW	WW	YW	CEM	Milk	SEN	SW	SF	SG	SB
+7	-0.2	+54	+98	+11	+32	-19.46	+59.10	+45.81	+34.87	+138.93

**36 4 Frozen Embryos (Grade 1)**

Stored at Westwood Embryo, Waverly, IA

MCC Daybreak #  
Quaker Hill Rampage 0A36 +  
16925771 QHF Blackcap 6E2 of 4V16 4355 +

Boyd New Day 8005 #+  
MCC Miss Focus 134 #  
Ideal 4355 of 0T26 2440  
QHF Blackcap 4V16 of 1H8  
BT Crossover 758N #+  
EXG Saras Dream S609 R3 +  
S A V Bismarck 5682 #+  
2 K's 004 Delia 851 +

Silveiras Conversion 8064  
Tri-K Kara KeeKee Z93  
17590388 2 K's Delia Kara X38

SIRE'S EPDs										
CED	BW	WW	YW	CEM	Milk	SEN	SW	SF	SG	SB
+9	+1.5	+82	+141	+13	+36	-42.05	+85.14	+120.11	+36.57	+191.34

DAM'S EPDs										
CED	BW	WW	YW	CEM	Milk	SEN	SW	SF	SG	SB
+10	-0.3	+64	+106	+12	+23	-4.18	+69.48	+73.85	+43.66	+142.79



**Tri-K Kara Keekee Z93**  
Donor dam of Lot 36 embryos



**Quaker Hill Rampage 0A36**  
Sire of Lot 36 embryos

- Here is an opportunity to acquire embryos from one of the hottest sires in the breed out of a featured Tri K donor. KeeKee is a tremendous young cow with volume, muscle and structural correctness.
- The donor dam has already produced an ET son serving the Vernon De Tar herd, Albia, IA.
- Maternal grandsire, Silveiras Conversion 8064 is an ORiGen featured sire with tremendous growth and carcass EPDs. He is delivering impeccable visual integrity and stems from a proven dam that was the 2007 California State Fair Grand Champion and Reserve Supreme.
- The embryo sire, Quaker Hill Rampage 0A36 is an ABS feature and is MCC Daybreak's biggest "spread" son. Rampage is the only proven sire in the breed to achieve a +9 CED and a +192 SB.





**Barbara M55 of TNT • Lot 37**



**Hoover Dam**  
Sire of Lot 37

- Her sire, Hoover Dam, is a high accuracy calving ease bull that sires tremendous muscle expression, functional soundness and eye appeal. After setting the record selling price in Hoover Angus history he became the #1 semen sales bull at both ABS and ORigen studs in 2013. The true legacy of Hoover Dam however, may be found in his daughters that currently post a collective nursing ratio of 102.
- Her service sire, SAV Bismarck, is a long-time Genex featured sire was the #2 registration sire in 2012. With high CED and WW values in this bull's performance portfolio, it is no surprise that he boasts a \$W in the top 1% of current sires.

**37 Barbara M 55 of TNT**

Born: 01/30/2015 18264966 Tattoo: 15 Cow

Sydney C C & 7 #  
Hoover Dam #  
16124994 Erica of Ellston C124 #  
PA Safeguard 021  
Barbara M of Prairiedge 8  
17637940 Barbara M of Prairiedge 6

S A F Connection #+  
SydGen Forever Lady 4087  
TC Gridiron 258 #  
Erica of Ellston V65  
G A R New Design 5050 #+  
PA Lorna Marshall 2905-730 #+  
Prairiedge Hershey  
Barbara M of Prairiedge 3

PRODUCTION EPDs				MATERNAL EPDs			S VALUES					
CED	BW	WW	YW	CEM	Milk	SEN	SW	SF	SG	SB		
+2	+1.1	+47	+91	+4	+30	-15.24	+45.99	+51.24	+47.46	+118.60		
CARCASS	CW	I+29	.05	MARB	I+.72	.05	REA	I+.96	.05	FAT	I-.005	.05

- AI bred on 4/20/2016 to SAV Bismarck 5682. Pasture exposed to Cardinal Pure Product 60A from 4/29 to 7/16/2016. Vet examined safe. Estimated due to AI on 1/27/2017.
- Individual performance BW 73 lbs, BWR 104, 205 day wt 762 lbs, WWR 108.
- Dam's Production: BR 1@104 and NR 1@108.



**Regal Rose C164 of TNT • Lot 38**

**38 Regal Rose C 164 of TNT**

Born: 09/03/2014 18162254 Tattoo: 164 Cow

S A V 004 Predominant 4438 #+  
Predominant 181 of TNT  
17230777 TNT Paddy 216  
EXAR Midland 4535  
TNT Regal Rose B 98  
16346190 TNT Regal Rose 284

SAV 8180 Traveler 004 #  
SAV Emblynette 1182  
EXAR Midland 4535  
TNT 911-19 Paddy 321  
BR Midland #  
EXAR Blackcap 2593  
Stepladder Regal 8148  
TNT 9-1-1 Rose 258 +

PRODUCTION EPDs				MATERNAL EPDs			S VALUES					
CED	BW	WW	YW	CEM	Milk	SEN	SW	SF	SG	SB		
+5	+2.2	+26	+59	+7	+17	+14.16	+9.26	+7.43	+22.75	+48.30		
CARCASS	CW	+11	.08	MARB	I+.37	.05	REA	-.30	.16	FAT	+0	.13

- AI bred on 4/21/2016 to McConnell Altitude 3114. Pasture exposed to Cardinal Pure Product 60A from 4/29 to 7/16/2016. Vet examined safe. Estimated due to AI on 1/28/2017.
- Individual performance: BW 83 lbs, 205 day wt 565 lbs and 365 day wt 752 lbs.
- Dam's production: BR 5@103, NR 5@98 and YR 5@100.



**SAV 004 Predominant 4438**  
Grandsire of Lot 38

- Her dam descends from a long line of "Rose" females that trace to Brads Rose 092, a "6807" daughter that came to TNT Angus from the famed Brad Z Ranch at Guthrie Center Iowa.
- 164 is the only daughter of a remunerative cow that produced herd sires for Allen Kerslake, Lisbon, IA; John Adam Kincade, Windsor Heights, IA and Benschopf Farms, Winterset, IA.
- Her sire, Predominant 181 of TNT is a prominent herd sire in the TNT program. His dam is among the numerous productive daughters of Midland 4535 and back to TNT Direct Deposit 911-19 "Robbie", a former Iowa Angus Association Show Bull of the Year.





**Royal Pride 124 of TNT • Lot 39**



**McConnell Altitude 3114**  
Service sire of Lots 38, 39 and 40

- You can often see a breeding philosophy just by studying pedigrees. The TNT herd was built, and continues to thrive on the proliferation of their most successful cow families. In this case, The Royal Pride family that is founded by Sir Wms Royal Pride 3005, a prolific daughter of “Cracker Jack” that when flushed to TNT foundation sire, SVF Oscar 9-1-1 seeded a plethora of TNT cornerstone females.
- Her maternal sister is a foundation female for Jamie Imboden, Earlham, IA.

**39 Royal Pride 124 of TNT**

**39** Born: 09/24/2014 18162245 Tattoo: 124 Cow  
 S A V Brilliance 8077 #  
 S A V Bismarck 5682 #+  
 S A V Blackcap May 5270  
 K A Traveler 1630  
 G G Lona 510  
 EXAR Midland 4535  
 T N T Torebey Lassie 82  
 K F F Rito Traveler 434H #  
 T N T 9-1-1 Royal Pride 395 +  
 S A V Brilliance 8077 #  
 S A V Blackcap May 5270  
 K A Traveler 1630  
 G G Lona 510  
 G D A R Oscar 711 #+  
 Cedar Hills Blackbird 2011 #  
 D H D Traveler 6807 #  
 Waltz Rose 1496 #

PRODUCTION EPDs				MATERNAL EPDs			\$ VALUES					
CED	BW	WW	YW	CEM	Milk	SEN	SW	SF	SG	SB		
+4	+2.4	+36	+68	+6	+18	+9.40	+22.07	+16.19	+25.80	+74.74		
CARCASS	CW	+21	.09	MARB	+32	.12	REA	+23	.16	FAT	-0.01	.13

- AI bred on 4/21/2016 to McConnell Altitude 3114. Pasture exposed to Cardinal Pure Product 60A from 4/29 to 7/16/2016. Vet examined safe. Estimated due to AI on 1/28/2017.
- Individual performance: BW 78 lbs, BWR 102, 205 day wt 626 lbs, WWR 92, 365 day wt 821 lbs, YWR 102, IMF 4.76%, IMF ratio 101.
- Dam’s production: BR 2@92, NR 2@95, YR 2@98, IMF 2@107

**40 Rose 104 of TNT**

**40** Born: 09/28/2014 18162246 Tattoo: 104 Cow  
 S A V Brilliance 8077 #  
 S A V Bismarck 5682 #+  
 S A V Blackcap May 5270  
 K A Traveler 1630  
 G G Lona 510  
 G D A R Oscar 711 #+  
 Cedar Hills Blackbird 2011 #  
 D H D Traveler 6807 #  
 Waltz Rose 1496 #

PRODUCTION EPDs				MATERNAL EPDs			\$ VALUES					
CED	BW	WW	YW	CEM	Milk	SEN	SW	SF	SG	SB		
-1	+3.6	+40	+67	-2	+15	+13.39	+21.13	+11.81	+18.00	+57.62		
CARCASS	CW	+17	.11	MARB	+14	.14	REA	+23	.17	FAT	-0.01	.14

- AI bred on 4/21/2016 to McConnell Altitude 3114. Pasture exposed to Cardinal Pure Product 60A from 4/29 to 7/16/2016. Vet examined safe. Estimated due to AI on 1/28/2017.
- Individual performance: BW 84 lbs, BWR 107, NR
- Dam’s production: NR 14@96, YR 11@101.



**Rose 104 of TNT • Lot 40**



**Gene Brune**  
Veteran Stockman

- This heifer is the last calf recorded on one of the foundation “Rose” daughters in the TNT herd. Her dam had 15 consecutive calves and maintained a 369 day calving interval.
- Her service sire, McConnell Altitude 3114 was the \$68,000 top selling bull of the 2015 McConnell bull sale selected by Beaman X6 Ranch. He is now a very high ranking calving ease sire featured in the Genex /CRI stud. He is described as a phenotypic perfect package that is the go-to bull for heifers.





**BHA Keymura Katy 315 • Lot 41**



**SLL YCC Keymura Katy 0220**  
Grandam of Lot 41

- Her donor dam stems from a prominent show ring cow family propagated in the Steele Land and Livestock, Younge Cattle Company and Breeze Hill programs. She was selected by Breeze Hill Angus in the 2013 Hotz Show heifer sale.
- The grandam is the many time champion Keymura Katy 0220, A Division Winner at the 2011 National Junior Angus Show, Champion at the 2011 Iowa State Fair Open Show and the Iowa Proview Show, as well as Iowa Owned Heifer of the Year.
- Her sire, PVF Insight 0129, is the low birth weight Genex sire that is one of the most heavily used Angus sires in 2015. "Insight" sired the Junior Champion and Grand Champion Female at the 2016 Iowa State Fair for Maddy Udell, Sioux City, Iowa as well as the Intermediate Champion Heifer for Hannah Mitchell, Prescott, Iowa.

## 41 BHA Keymura Katy 315

Born: 04/11/16 +Pending Tattoo: 315 Cow

S A V Brilliance 8077 #  
PVF Insight 0129 +  
16805884 PVF Missie 790 +  
  
Dameron First Class  
YCC Keymura Katy 335 +  
17597770 SLL YCC Keymura Katy 0220 +

S A V Bismarck 5682 #+  
S A V Blackcap May 5270  
P V F New Horizon 001 #+  
P V F Miss Raptor 024  
EXG RS First Rate S903 R3  
Dameron Northern Miss 3114  
Plainview Lutton E102  
Steele Miss Kymra Katy K006

Projected EPDs										
CED	BW	WW	YW	CEM	Milk	SEN	SW	SF	SG	SB
I+1	I+3.4	I+58	I+95	I+6	I+31	-20.51	+52.88	+48.99	NA	NA

## 42 BHA Royal Queen 6904 [DDP]

Born: 03/04/16 18613659 Tattoo: 6904 Cow

Rito 9FB3 of 5H11 Fullback #+  
Dameron P V F Raptor 702 +  
12871926 Davis Proven Queen 3026

SCC First-N-Goal GAF 114 +  
Dameron Royal Queen 418  
17924827 Dameron Royal Queen 014 +

Leachman Fullback #  
Rita 5H11 of 1B14 Rito 9J9  
V D A R Rito 263  
Dekap Proven Queen 38  
Dameron First Class  
S C C Royal Blackbird 502 +  
PVF ALL PAYDAY 729 #  
Blue Ston Royal Queen 7004 +

PRODUCTION EPDs				MATERNAL EPDs			S VALUES			
CED	BW	WW	YW	CEM	Milk	SEN	SW	SF	SG	SB
I+2	I+3.0	I+47	I+81	I+6	I+29	-11.39	+41.88	+31.46	NA	NA



**BHA Royal Queen 6904 • Lot 42**



**Dameron Royal Queen 418**  
Dam of Lot 42

- Her dam is a first-calf heifer selected by Breeze Hill Angus as a feature in the 2014 Dameron Angus Sale where she posted an individual 205 day wt of 796 lbs to ratio 115.
- Her sire, Dameron PVF Raptor 702 is a foundation sire in the Dameron program with a legacy of outstanding females demonstrating great bone, muscle quality and extended front ends. Note that Raptor is the maternal grandsire of the legendary Dameron First Class.
- Maternal grandsire, SCC First-N-Goal GAF 114 is a Select Sires feature recognized as the premier son of Dameron First Class whose semen is nearly depleted. First-N-Goal is making his own name as a prepotent sire of substance, power and attractive pattern. First-N-Goal is a full brother to Cole Greiman's 2012 NJAS Grand Champion Owned Female, SCC Royal Blackbird 112.





**Hartz Blackbird Lass 57 259 • Lot 43**



**EXAR Blue Chip 1877B**  
Sire of Lot 43

- Here's a bred heifer straight from the heart of the embryo program. A nice profiling female, great disposition, a younger full sister to a heifer shown successfully by the Langley Family, in Iowa and has gone one to make a tremendous cow and produce the next generation of show heifers for them.
- From the Blackbird Lass cow family that stems back to one of the original foundation cows purchased in 1960. She can do it all, show heifers, front pasture cows, to herd bulls. Her mother was flushed at 12 years of age because she earned it the old-fashioned way, production.
- She posts enviable EPD values that rank her in the top 1% for WW and \$W as well as the top 5% for YW.

## 43 Hartz Blackbird Lass 57 259

Born: 04/15/15 +18286349 Tattoo: 57 Cow

Dameron First Class  
EXAR Blue Chip 1877B +  
16980412 Greens Princess 1012 +  
  
SVF Siebrings Forever Russ #+  
Hartz Lass 259  
14238622 Deannas Trendy Lass 599

EXG RS First Rate S903 R3  
Dameron Northern Miss 3114  
Greens Premium 7578  
Greens Princess 7418  
Gdar SVF Russ 184B #+  
Gdar SVF Forever Lady 214D +  
R&J Cruz 109 #+  
H R Cruising Lady 109

PRODUCTION EPDs				MATERNAL EPDs			\$ VALUES						
CED	BW	WW	YW	CEM	Milk	SEN	\$W	\$F	\$G	\$B			
I+8	I+2.7	I+72	I+112	I+12	I+25	-11.88	+71.66	+69.27	+19.80	+93.20			
CARCASS	CW	I+30	.05	MARB	I+.35	.05	REA	I+.14	.05	FAT	I+.035	.05	

- Pasture exposed to WAR HF CHARACTER 509. Vet examined safe, estimated due 4/20/2017.
- Dam's production: BR 8@92, NR 8@114, YR 2@119, IMF 4@107 and RE 4@106.



**Hartz Blackbird Lass 592 8492 • Lot 44**

## 44 Hartz Blackbrd Lass 592 8492

Born: 03/01/15 +18455225 Tattoo: 592 Cow

Dameron First Class  
EXAR Classen 1422B +  
16915162 EXAR Princess 2006 +  
  
S A V 8180 Traveler 004 #  
MRCC Black Lady Lass 8492  
16128590 Hartz Black Lady Lass 492 #+

EXG RS First Rate S903 R3  
Dameron Northern Miss 3114  
Exar Lutton 1831 #  
Greens Princess 1012 +  
Sitz Traveler 8180 #  
Boyd Forever Lady 8003 +  
Boyd New Day 8005 #+  
E J Hartz Lass 9911 +

PRODUCTION EPDs				MATERNAL EPDs			\$ VALUES						
CED	BW	WW	YW	CEM	Milk	\$EN	\$W	\$F	\$G	\$B			
I+2	I+3.4	I+61	I+105	I+10	I+26	-18.11	+48.57	+61.30	NA	NA			

- Pasture exposed to WAR HF CHARACTER 509. Vet examined safe, estimated due 3/15/2017.
- Dam's production: BR 3@94, NR 3@110 and YR 1@107.



**EXAR Classen 1422B**  
Sire of Lot 44

- Deep, powerful, easy fleshing would be the way to describe this Classen x 004 daughter. Bred for excellent growth, the proof is in the production. Her dam, 8492 has produced several sons working in purebred herds, daughters that have been shown, produced show heifers and donors. Here's a female with enough size and power to suit the most discriminating breeder.
- She blends multiple generations of show ring accomplishment through the noted son of "First Class", EXAR Classen 1422B, a son of a Denver champion out of a daughter of a Denver champion who is a sister to a Denver reserve champion.



# 45 Hartz Lucy 361-519 [DDP]

Born: 04/02/13 18003641 Tattoo: 361 Cow

HF Kodiak 5R  
HF Tiger 5T  
16526314 HF Echo 84R

Sandy Bar Advantage 43M  
Wilbar Ruby 955N  
TC Freedom 104 #  
HFDF Echo 6N  
G A R Precision 1680 #  
G A R Ext 4927 +  
G D A R Traveler 044 #  
Fairfield Lucy 307

G A R Retail Product #  
Bue the Lucy 519 +  
15115136 Fairfield Lucy 908

PRODUCTION EPDs				MATERNAL EPDs			\$ VALUES					
CED	BW	WW	YW	CEM	Milk	SEN	\$W	\$F	\$G	\$B		
+9	+1.3	+49	+92	+8	+30	-17.73	+46.28	+49.08	+26.91	+99.44		
CARCASS	CW	I+31	.05	MARB	I+.28	.05	REA	I+.34	.05	FAT	I-.034	.05

- AI bred on 6/9/2016 to MRCC Synergy 301-9585. Vet examined safe, due 3/18/2017.
- Individual performance: BW 80 lbs, BWR 98, 205 day wt 594 lbs and WWR 99.
- Dam's production: BR 3@98, NR 3@106 and YR 1@106.
- Here's a low birth, high growth young cow that has proven her ability to produce. Her 2016 heifer by Insight sold as a show heifer to the Hunter family in Missouri. Sired by HF Tiger, dam by Retail Product, next dam by 044, generations of performance bred here.
- The Synergy calves have been popular due to eye appeal, strength, and are going to make tremendous cows. He is an out-cross calving ease sire with great visual integrity, volume and muscle shape.



MRCC Synergy 301-9585  
Service sire of Lot 45

# 46 Hartz Blackbrd Lass 602 8492

Born: 02/12/16 +18616393 Tattoo: 602 Cow

Dameron First Class  
EXAR Classen 1422B +  
16915162 EXAR Princess 2006 +

EXG RS First Rate S903 R3  
Dameron Northern Miss 3114  
Exar Lutton 1831 #  
Greens Princess 1012 +  
Sitz Traveler 8180 #  
Boyd Forever Lady 8003 +  
Boyd New Day 8005 #+  
E J Hartz Lass 9911 +

S A V 8180 Traveler 004 #  
MRCC Black Lady Lass 8492  
16128590 Hartz Black Lady Lass 492 #+

PRODUCTION EPDs				MATERNAL EPDs			\$ VALUES			
CED	BW	WW	YW	CEM	Milk	SEN	\$W	\$F	\$G	\$B
I+2	I+3.4	I+61	I+105	I+10	I+26	-18.11	+48.57	+61.30	NA	NA

- Dam's production: BR 3@94, NR 3@110 and YR 1@107.
- Her donor dam earned her entrance into the Hartzell donor pen with outstanding production and individual performance that included a BWR 95, WWR 107 and YWR 114.
- A really nice, complete, competitive February show heifer prospect, sired by Classen, dam by 004, a maternal sister to Lot 47 and full sister to the Lot 44 bred heifer, see her and her sisters and they define consistency. Long, stout, good haired, good bone, sound, with a lot of capacity is a trademark of this cow family. She'll have the size, dimension and femininity to suit, and is backed by a time-tested cow family that has produced for us for over 50 years.



Hartz Blackbird Lass 602 8492 • Lot 46

# 47 Hartz Blackbrdlass 6012 8492

Born: 02/10/16 +18616391 Tattoo: 6012 Cow

Dameron First Class  
EXAR Blue Chip 1877B +  
16980412 Greens Princess 1012 +

EXG RS First Rate S903 R3  
Dameron Northern Miss 3114  
Greens Premium 7578  
Greens Princess 7418  
Sitz Traveler 8180 #  
Boyd Forever Lady 8003 +  
Boyd New Day 8005 #+  
E J Hartz Lass 9911 +

S A V 8180 Traveler 004 #  
MRCC Black Lady Lass 8492  
16128590 Hartz Black Lady Lass 492 #+

PRODUCTION EPDs				MATERNAL EPDs			\$ VALUES			
CED	BW	WW	YW	CEM	Milk	SEN	\$W	\$F	\$G	\$B
I+4	I+3.1	I+63	I+103	I+10	I+24	-14.46	+51.73	+53.30	NA	NA

- Dam's production: BR 3@94, NR 3@110 and YR 1@107.
- With the NJAS show in Iowa in 2017, here's a great opportunity to purchase a great competitive show heifer/cow prospect. This February daughter of Blue Chip is halter broke, acts like a lady in the chute, with depth, power, thickness, and the look to do it all.
- This heifer is hairy, nice boned, and feminine. We knew she was good, but didn't realize how good, until we got her clipped. Her dam by 004 has produced show heifers, herd bulls, and donor females. Time tested? You bet, we've had this cow family for over 50 years. A maternal sister sells as Lot 46.
- The sire, EXAR Blue Chip 1877B, was the 2013 Show Bull of the Year winning the American Royal and NAILE. His pedigree combines 2 of the most popular Denver Champions, Triple Crown winner, Dameron First Class and the immortal Greens Princess 1012, a top producer of champions.



Hartz Blackbrdlass 6012 8492 • Lot 47





**MRCC Kinochtry Beauty 544 • Lot 48**

**48 MRCC Kinochtry Beauty 544**

Born: 04/01/15 +18283466 Tattoo: 544 Cow

Dameron First Class  
SCC First-N-Goal GAF 114 +  
17030115 SCC Royal Blackbird 502 +

H S A F Bando 1961 #+  
MRCC Kinochtry Beauty 9585  
16460730 MRCC Kinochtry Beauty 585 +

EXG RS First Rate S903 R3  
Dameron Northern Miss 3114  
Champion Hill Edition 2029 +  
Champion Hill Blackbird 1943 +  
S A F 598 Bando 5175 #+  
J K S Miss Cheyenne 196 +  
C A Future Direction 5321 #  
R R F Black Beauty 7410

PRODUCTION EPDs				MATERNAL EPDs			\$ VALUES					
CED	BW	WW	YW	CEM	Milk	SEN	SW	SF	SG	SB		
I-12	I+4.7	I+62	I+96	I+2	I+32	-16.25	+60.87	+57.93	+23.50	+108.53		
CARCASS	CW	I+32	.05	MARB	I+.36	.05	REA	I+.21	.05	FAT	I+.014	.05

- Pasture exposed to WAR HF CHARACTER 509. Vet examined safe, estimated due 2/28/2017.
- Dam's production: BR 2@93, NR 2@101, YR 1@109 and IMF 2@108.

**49 MRCC KH Foreverlady 523 0154**

Born: 03/15/15 +18616392 Tattoo: 523 Cow

HF Kodiak 5R  
Soo Line Motive 9016  
16568189 TLA Beauty 5R

O C C Emblazon 854E #+  
Forever Lady 0154 HMRW +  
17195673 R/M 2185 Forever Lady 598 +14381757

Sandy Bar Advantage 43M  
Wilbar Ruby 955N  
RR 7407 Rainmaker 2154  
Terrlene Beauty 35F  
D H D Traveler 6807 #  
Dixie Erica of C H 1019  
Bon View Bando 598 #  
S V F Forever Lady 57D

PRODUCTION EPDs				MATERNAL EPDs			\$ VALUES					
CED	BW	WW	YW	CEM	Milk	SEN	SW	SF	SG	SB		
I+12	I-0.2	I+46	I+77	I+7	I+21	+6.25	+47.33	+32.93	+28.57	+96.77		
CARCASS	CW	I+26	.05	MARB	I+.31	.05	REA	I+.54	.05	FAT	I-.005	.05

- Pasture exposed to WAR HF CHARACTER 509. Vet examined safe, estimated due 3/23/2017.
- An embryo transplant daughter of the prolific MR Cattle Co donor, Forever Lady 0154 HMRW that is an Emblazon daughter and granddaughter of the famed BT Everelda Entense 57D, the renowned \$190,000 full sister to BT Right Time 24J, BT Direction 65D, the \$90,000 BT Everelda Entense 76D, the \$55,000 BT Everelda Entense 55D and the \$100,000 BT Everelda Entense 567H. The foundation 4th dam, Sitz Everelda Entense 1905 is considered by many to be the greatest genetic achievement in Montana Angus history.
- Her sire, Soo Line Motive 9016 gained national attention as the lead bull in the 2010 NWSS Champion Pen of Three Bulls and was the top-selling lot in the 2010 Bases Loaded Sale where he sold for \$55,000 half interest.

**A maternal  
sister to  
MRCC  
Synergy  
301-9585**



**MRCC Synergy 301-9585**  
Maternal brother to Lot 48

- This tremendous First-N-Goal daughter is a maternal sister to the revered MR Cattle and SEK Genetics AI sire, MRCC Synergy 301-9585.
- Beauty was shown this year up to through the State show where she was highly competitive in class. Halter broke with a long front, level top and great look, this heifer ranks in the top 10% of the breed for WW and \$W.
- SCC First-N-Goal GAF 114 is a Select Sires feature recognized as the premier son of Dameron First Class whose semen is nearly depleted. First-N-Goal is making his own name as a prepotent sire of substance, power and attractive pattern. First-N-Goal is a full brother to Cole Greiman's 2012 NJAS Grand Champion Owned Female, SCC Royal Blackbird 112.



**Soo Line Motive 9016**  
Sire of Lot 49





**MRCC Forever Lady 382 9410 • Lot 50**

**50 MRCC Forever Lady 382 9410**

**Born:** 04/02/13    **+18352352**    **Tattoo:** 382    **Cow**

O C C Missing Link 830M #  
**Duff Basic Instinct 6501 +**  
**15944142** O C C Dixie Erica 814G

O C C Emblazon 854E #+  
**WAR Forever Lady MRCC 9410 +**  
**16884280** R/M 2185 Forever Lady 598 +

O C C Headliner 661H  
O C C Dixie Erica 946K +  
O C C Anchor 771A #  
O C C Dixie Erica 764C  
D H D Traveler 6807 #  
Dixie Erica of C H 1019  
Bon View Bando 598 #  
S V F Forever Lady 57D

PRODUCTION EPDs				MATERNAL EPDs			\$ VALUES			
CED	BW	WW	YW	CEM	Milk	SEN	SW	SF	SG	SB
I+4	I+1.6	I+51	I+81	I+5	I+19	+2.13	+43.25	+28.71	NA	NA

- AI bred on 4/12/2016 to SAV Recharge 3436. Vet examined safe, due 1/19/2017.
- 382 has a rich history of quality and fertility. Her grandam produced many daughters marketed all over the country. This heifer shows you extra depth with a smooth make and cowy look.
- Her sire, Duff Basic Instinct 6501 has been the signature bull in the Power + Plus program best known for siring highly marketable bulls and phenomenal females. This now deceased sire produces ideal brood cows long after their show career is over.
- Her service sire, SAV Recharge 3436 is a Select Sires feature stemming from the Legendary SAV Blackcap May 4136 who is also the dam to the \$110,000 SAV Resource whose calves have been sought after all spring. Also sons of hers: SAV Renown, SAV Rocky Mountain and SAV Heritage which is the sire to the \$275,000 SAV Harvester.



**Duff Basic Instinct 6501**  
Sire of Lot 50



**MRCC Forever Lady 507-4022 • Lot 51**

**51 MRCC Forever Lady 507- 4022**

**Born:** 02/08/15    **+18303100**    **Tattoo:** 507    **Cow**

Emulation N Bar 5522 #  
**N Bar Emulation EXT #**  
**10776479** N Bar Primrose 2424

Twin Valley Precision E161 #  
**A Plus Blackcap 4022 +**  
**14697305** G A R Scotch Cap 867 #

Emulation 31 #  
Ankony 8F78 Lass 8F275  
Emulation 31 #  
Primrose N Bar 9962  
G A R Precision 1680 #  
W C C Blackcap C9 +  
Scotch Cap #  
Blackcap G A R 51

PRODUCTION EPDs				MATERNAL EPDs			\$ VALUES					
CED	BW	WW	YW	CEM	Milk	SEN	SW	SF	SG	SB		
I+5	I+1.8	I+36	I+67	I+11	I+21	+9.01	+30.71	+28.15	+19.45	+100.55		
<b>CARCASS</b>	<b>CW</b>	<b>I+30</b>	<b>.05</b>	<b>MARB</b>	<b>I+.32</b>	<b>.05</b>	<b>REA</b>	<b>I+.18</b>	<b>.05</b>	<b>FAT</b>	<b>I+.032</b>	<b>.05</b>

- Pasture exposed to HF WAR CHARACTER 509. Vet estimated due 4/20/2017.
- Dam's production: BR 2@98, NR 2@106 and YR 2@108.
- Her dam was a former donor in the Limestone LLC breeding program.
- Here's a chance to have an own daughter of the Immortal EXT, tracing back to the Matriarch, Scotch Cap 867, grandam of GAR Precision 2536.
- Feminine with power, this one's pedigree is full of time tested female and performance genetics, with a long clean look to go with it.

**FOR REFERENCE ONLY**

**Ref HF WAR Character 509**

**Born:** 01/06/15    **+18386798**    **Tattoo:** 509    **Bull**

O C C Missing Link 830M #  
**GCC Total Recall 806T**  
**15914543** O C C Juanada 741K +

Boyd New Day 8005 #+  
**Hartz Black Lady Lass 493 +**  
**14943382** E J Hartz Lass 9911 +

O C C Headliner 661H  
O C C Dixie Erica 946K +  
O C C Emblazon 854E #+  
O C C Juanada 709Z  
A A R New Trend #  
S V F Forever Lady 57D  
Sitz Traveler 043 #+  
E J H Evergreen Lass 799

PRODUCTION EPDs				MATERNAL EPDs			\$ VALUES					
CED	BW	WW	YW	CEM	Milk	SEN	SW	SF	SG	SB		
I+10	I+0.7	I+47	I+80	I+7	I+34	-9.46	+61.33	+32.85	+21.07	+59.08		
<b>CARCASS</b>	<b>CW</b>	<b>I+14</b>	<b>.12</b>	<b>MARB</b>	<b>I+.16</b>	<b>.15</b>	<b>REA</b>	<b>I+.54</b>	<b>.16</b>	<b>FAT</b>	<b>I+.020</b>	<b>.14</b>

- Several of the MR Cattle Company and Ken Hartzell heifers carry the service of this calving ease sire.



# Livestock HUB

f livestockhub @livestockhub1 http://www.livestockhub.net

Dave Sweeney  
641-373-4340  
dbsweeney75@gmail.com

Christa Nichols  
641-373-0342  
livestockhub1@gmail.com



Lot 6B



Lot 19



Lot 37



Lot 43

## Midwest Connection Consignors

- ANGUS ACRES.....LOTS 1-18
- FAUST CATTLE CO.....LOTS 19-21
- J-M RANCH ANGUS.....LOTS 22-23
- STRASBURG ANGUS.....LOTS 24-25
- SUMMIT FARMS.....LOTS 26-29
- TRI-K CATTLE CO.....LOTS 30-36
- WILLOW CREEK FARM OF IOWA.....LOTS 37-40
- BREEZE HILL ANGUS.....LOTS 41-42
- HARTZELL ANGUS.....LOTS 43-47
- MR CATTLE CO.....LOTS 48-51