

# BORN'S **U** ANGUS

H: 605.886.7487 C: 605.881.7615



Annual Bull & Female Sale  
Sunday, May 4, 2014

## NEW SALE LOCATION

2:00 PM - GLACIAL LAKES LIVESTOCK SOUTH BARN  
WATERTOWN, SOUTH DAKOTA



**Steve Borns**  
Hazel, SD  
Cell (605) 881-7615  
Home (605) 886-7487  
SteveBorns@hotmail.com



H: 605.886.7487

C: 605.881.7615

# SELLING 80 HEAD

46 Yearling Bulls  
33 Registered Heifers  
1 Comm. Angus Heifers

## ANNUAL BULL & FEMALE SALE

SUNDAY - 2:00 PM

# MAY 4, 2014

GLACIAL LAKES LIVESTOCK SOUTH BARN  
WATERTOWN, SD

### SALE DAY PHONES:

**(605) 886-5052**

Steve Borns: 605-881-7615

CAS Cell Phones:

515-491-8078 or 515-491-1335

### LIVESTOCK PRESS REPRESENTATIVES

Angus Journal.....Vern Frey (701) 721-0344

Cattle Business Weekly.....Donnie Leddy (605) 695-0113

Tri State Neighbor.....Jeff Kapperman (605) 940-5104

Farm & Ranch Guide.....Kirby Goettsch (605) 380-3939



**Auctioneer:**

**Al Conover**

**(515) 491-8078**

### GENERAL INFORMATION

#### SALE LOCATION:

Glacial Lakes Livestock South Barn, 1005, 9th Ave SW, Watertown, SD 5720. Phone: 605-886-5052

#### MOTEL ACCOMMODATIONS IN WATERTOWN:

Drake Motor Inn, 621 5th St SW. Phone: 605-886-8411

Super 8 Motel, 503 14th Ave SE. Phone: 605-882-1900

Best Western Ramkota, 1901 9th Ave SW. Phone: 605-886-8011

Days Inn, 2900 9th Ave SE. Phone: 605-886-3500

#### INSPECTION OF CATTLE:

Cattle will be available for inspection on Saturday, May 4th at the sale site. The cattle may be viewed at the ranch anytime prior to the sale, call to make arrangements.

#### HEALTH:

Interstate health papers furnished on all cattle selling. All bulls semen tested prior to the sale and are guaranteed breeders.

#### EPDS & \$VALUES:

The American Angus Association is now calculating EPDs on a weekly basis using all available carcass harvest data, ultrasound data and the Igenity Angus specific genomic profile data. It is possible new data has been submitted between the date the catalog was finalized and sale day, which will affect the individual EPDS and \$Values indexes of the animals selling. If your purchasing decision relies highly on the most current data available, please look up animals of interest on the American Angus Association web page prior to viewing the sale offering.

**TERMS:** Cash - please settle for cattle promptly.

#### TERMS & CONDITIONS:

All cattle sell according to the standard terms and conditions of the American Angus Association.

**TRUCKING:** We will be glad to assist in making the best possible trucking arrangements.

#### INSURANCE:

Will be available sale day through Conover Auction Service, an American Livestock Agent.

#### LIABILITY:

All persons attending this sale do so at their own risk, legal or otherwise for their safety or the behavior of the animals. The Owners, Auction Service and Sale Staff assume no liability for property loss or any accidents that may occur.

#### ANNOUNCEMENTS:

From the block will take precedence over the catalog. Buyers unable to attend may send their bids to the Auction Service, Field Representatives or Auctioneer.

**LUNCH:** Will be available sale day starting at 12:30 PM.

Watch & bid online for FREE at [conoveronlinesales.com](http://conoveronlinesales.com)

powered by DV Auction

To view or bid at Borns Angus Bull & Female Sale

• Create an account at [www.conoveronlinesales.com](http://www.conoveronlinesales.com) under the "register" tab. Apply for bidding approval at least 24 hours prior to the auction - a DV representative will notify you once you have been approved.

• High speed Internet is required for successful bidding - be sure to check the lag-time monitor in the top left corner to ensure real-time broadcasts.

• Proxy bidding - If you can't make time to watch the sale, register a proxy bid and let our system represent your bid while you're away.

• Having troubles? During the auction, you can type a message to the operator at any time for assistance. Our full time support team can also always be reached at (402) 474-5557.

• DVA Representative: Justin Dikoff (605) 290-0635 - email: [jdikoff@dvauction.com](mailto:jdikoff@dvauction.com)

**Borns Angus will deliver bulls free of charge within a 150 mile radius. Customers taking their bulls home on sale day will receive a \$50 per bull credit.**



H: 605.886.7487

C: 605.881.7615

## STEVE BORN'S

44368 175th St - Hazel, SD 57242

605.881.7615 (c) - 605.886.7487 (h)

[steveborns@hotmail.com](mailto:steveborns@hotmail.com)

SALE MANAGED BY:

**CONOVER  
AUCTION  
SERVICE**  
Inc.



Box 9  
Baxter, IA 50028

**AL & JEANNE CONOVER**  
641-227-3537 • Fax: 641-227-3792  
Jim Shirley (605) 695-0649  
Dave Sweeney (641) 373-4340  
Email: [conover@conoverauction.com](mailto:conover@conoverauction.com)  
[www.conoverauction.com](http://www.conoverauction.com)



44368 175th St.  
Hazel, SD 57242  
steveborns@hotmail.com

First I would like to say thank you to everyone who has purchased cattle from us in the past. I would also like to thank everyone who has helped to make this possible.

I welcome everyone to this year's sale on May 4 at 2:00 p.m.

This year we will offer 46 yearling bulls, 33 registered heifers and 1 commercial heifer. The genetics this year are similar to past years - strong maternal traits with easy calving, easy fleshing and very docile. The calves this year are very heavy muscled and visitors to the farm have told me this is my best calf crop ever. Entire sale offering is free of all genetics defects either by pedigree or testing.

The calves were vaccinated in the spring going to pasture with Bova-Shield Gold 5, Ultrabac 7 and Dectomax. They received the same in the fall two times with one shot.

The heifers in the sale have also been vaccinated with Preg Guard 10 on 4-8-2014 so they are ready to breed.

You are welcome to view the cattle at the farm anytime, just call. If you are unable to visit the farm you can view the cattle on DVAuctions.

On sale day you can come view the cattle and then have lunch with us starting at 12:30. We will start the sale at 2:00 p.m.

Thank you again to everyone who has helped to make this possible.

Sincerely

Steve Borns

**SALE MANAGED BY:**

**CONOVER  
AUCTION  
SERVICE  
Inc.**



AL & JEANNE CONOVER  
641-227-3537 \* Fax: 641-227-3792  
Email: conover@conoverauction.com  
www.conoverauction.com

Dear Cattlemen,

It has been an extreme pleasure to again assist Steve Borns with the presentation of his 2014 production. Steve sees the beef industry from a perspective that rewards traits that ease management requirements, reduce feed resources and improves his bottom line. The outcome has been a herd and a new calf crop that excels at calving ease, minimizes birth weight, optimizes growth and milk, and minimizes energy requirements. You will see this in the EPD values in this offering ranking in the highest brackets of the breed for CED, BW and \$EN.

What is truly intriguing about Steve Borns' accomplishments is that he has done this using mostly outcross genetics that offer a refreshing new genetic alternative to some of the proven but tried pedigrees that have been the norm.

Be sure to take the time to stop by the farm, check out the sale offering and look over the Borns Angus herd bull battery, especially the promising "Y40" bull that is not only CC&7's easiest calving son, but also the best combination of CED, BW and \$B **IN THE ENTIRE BREED!**

Please plan to join Conover Auction Service and your host, Steve Borns and family on May 4th in Watertown, SD. As always, don't hesitate to call our office or Steve Borns with your pre-sale inquiries.

Sincerely,



Al Conover



Dave Sweeney



Jim Shirley

# Borns Angus Reference Sires



**RBM CC7 Y40**



## RBM CC7 Y40

Birth Date: 1-11-2011      Bull 16984247      Tattoo: Y40  
 #+SAF Connection      #+SVF Gdar 216 LTD  
**SydGen CC&7**      #+SAF Royal Queen 5084  
 #15330743 SydGen Forever Lady 4087      #SydGen 1407 Corona 2016  
    #+SAF Forever Lady 8292

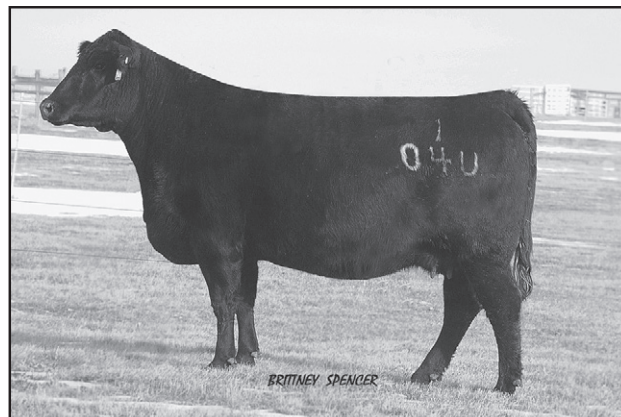
#Mytty In Focus REF      #SAF Focus of ER  
**ALC Blackbird 104U**      Mytty Countess 906  
 16083636 +ALC Blackbird 6707      #Connealy Lead On  
    +Baldrige Blackbird M868

PRODUCTION EPDs				MATERNAL EPDs			CARCASS			
CED	BW	WW	YW	CEM	MILK	CW	MARB	REA	FAT	
+18	-3.7	+48	+100	+13	+37	+38	+87	+36	-.013	

zoetis

CED	BW	WW	YW	RFI	DMI	YH	SC	DOC	HP	CEM	MILK	MW	MH	CW	MB	RE	FAT	TEND
4	2	65	37	74	40	37	20	1	41	22	1	49	19	24	30	55	11	95

- BW 65 lbs., BWR 82, 205 day wt. 733 lbs., WWR 118 (121 contemporaries), 365 day wt. 1371 lbs., YR 125, IMF 5.95, IMF ratio 138, REA 12.2, REA ratio 100.
- This soon-to-be nationally acclaimed calving-ease sire was the \$18,000 (2/3 interest) top-selling bull of the 2012 RBM Livestock Production Sale. Astute cattlemen marveled at his length, profile, abundant muscling and functional soundness, while data connoisseurs were astounded by his individual performance and Zoetis percentile rank.
- His progeny ratios and DNA enhanced EPDs rank him as the breed's #1 son of SydGen CC&7 for CED and BW; and among the top 15 sons for \$Beef value. Moreover, no other bull in the breed, no matter what their parentage, can match his combination of CED, BW and \$B.
- He ranks in the top 1% of the breed for CED and BW, top 2% for Doc, Milk and \$B, and in the top 20% or better for YW, RADG, SC, Marb, Fat, \$W, \$F, \$G, and \$QG.
- His dam is among the most revered in the RBM program. She also produced the featured Lots 1 and 2 bulls in the 2014 RBM Sale (Lot 2 was the \$10,000 2nd top-selling bull). ALC Blackbird 104U descends maternally from the famous Pathfinder Dam, Cedar Hills Blackbird 2011 that was a long-time SVF donor and mother of SVF Oscar 9-1-1.



**ALC Blackbird 104U - Dam of Reference Sire A.**



**SydGen CC & 7 - Sire of Reference Sire A.**

# Borns Angus Reference Sires



## Sua Legend U8404 [AMF]

Birth Date: 3-11-2008  
 #+OCC Emblazon 854E  
**OCC Legend 616L**  
 14036365 OCC Blackbird 632J

Bull +16567512  
 #DHD Traveler 6807  
 Dixie Erica of CH 1019  
 OCC Gladiator 612G  
 OCC Blackbird 824G

Tattoo: U8404

#Rito 616 of 4B20 6807  
**SUA 616 Supreme 111Z**  
 14059177 SUA 5N10 Supreme 9100

#DHD Traveler 6807  
 +Rita 4B20 of OFB1 Bando  
 Rito 5N10 of 1G14 Rito 3W3  
 #Western Supreme 89

PRODUCTION EPDs				MATERNAL EPDs		CARCASS			
CED	BW	WW	YW	CEM	MILK	CW	MARB	REA	FAT
+11	-.6	+54	+94	+5	+11	+28	+33	+55	+0

- This super-sound, athletic and virile Borns Angus herdsire is an embryo transplant son of the easy calving, high \$EN (top 1%) sire OCC Legend.
- He combines a sub-zero BW EPD, enviable growth and is backed by a strong cow family in the Spear U Angus program.
- Progeny ratios: 96 BWR 99, 96 WWR 101 and 54 YWR 101.
- 13 sons and daughters will be featured in this year's sale.



**Sua Legend U8404**



## BA Cowboy 994

Birth Date: 4-11-2009  
 SUA RH Cowboy 1210Z  
**SUA Cowboy 419P**  
 14984696 SUA Canyon Merideth 211

Bull 16642672  
 Spear U Ranch Hand 8303  
 Spear U EXT 712  
 #Larks Canyon 74D4  
 SUA 616 Merideth 0117

Tattoo: 994

+Bluegrass New Design 203  
**Koupals Zara 4163**  
 14787818 Koupals Zara 2298

#Bon View New Design 1407  
 #+Bluegrass Bonny 900 505  
 #+SAF Bulls Eye  
 Koupals Zara 025

PRODUCTION EPDs				MATERNAL EPDs		CARCASS			
CED	BW	WW	YW	CEM	MILK	CW	MARB	REA	FAT
+8	+3.8	+47	+83	+11	+16	+28	+24	+38	+0.009

- Cowboy bested his contemporaries and earned pasture service duties at Borns Angus with a BW of 77 lbs., 205 day wt. 761 lbs., and WWR 112.
- His dam is a phenomenal producer with a production record of 4 BWR 98, 4 NR 107 and 2 YWR 102.
- Progeny of Cowboy have gobs of eye appeal, are clean, correct and enjoy a very unique pedigree make-up.



**BA Cowboy 994**



## BA Xception 993

Birth Date: 4-10-2009  
 #+Whitestone Xception  
**Koupals Xception 413**  
 14787770 Koupals Ellanah 256

Bull 17003199  
 #GAR Precision 1680  
 +Toebben Forever Lady 150H  
 Whitestone Widespread L131  
 Beefland Ellanah 6127

Tattoo: 993

SUA LC 2202 W  
**BA Canyon Queen 514**  
 15273850 Queen of SAR42

#Larks Canyon 74D4  
 #Spear U Heidi 821  
 Viking of SAR55  
 #Queen of SAR 384

PRODUCTION EPDs				MATERNAL EPDs		CARCASS			
CED	BW	WW	YW	CEM	MILK	CW	MARB	REA	FAT
+11	-.5	+36	+67	+10	+16	+12	-.12	+0.07	+0.070

- Xception is a well-documented calving-ease bull that boasts 20 progeny with an average BWR 97.
- His dam was a uniquely bred female that boasted individual performance that blended a WWR 104 and an IMF ratio 112.
- He is well suited for low-input programs with his sub-zero BW EPD, optimum Milk and \$EN in the top 10% of current sires.



**BA Xception 993**

# Borns Angus Reference Sires



**BA Navigator 815**



## BA Navigator 815 [DDF]

Birth Date: 3-16-2008  
#Baldrige Navigator N5  
**BA Navigator 615**  
15567853 Koupals Ebonette 4140

Bull 16284876  
#Baldrige Kaboom K243 KCF  
+Baldrige Forever Lady K856  
Baldrige Leon L92  
#Beefland Ebonette 9153

#+Whitestone Xception  
**BA Enchantress 631**  
#15567836 Koupals Enchantress 4114

#GAR Precision 1680  
+Toebben Forever Lady 150H  
Whitestone Traveler M021  
Koupals Enchantress 1115

PRODUCTION EPDs				MATERNAL EPDs		CARCASS			
CED	BW	WW	YW	CEM	MILK	CW	MARB	REA	FAT
+13	-1.5	+36	+73	+10	+21	+34	+0.05	+0.36	+0.04

- Navigator is another home-raised calving-ease sire that has been used with much success within the breeding program. He recorded astonishing individual performance that included a 58 lb. BW, BWR 89, 205 day wt. 818 lbs. and WWR 114.
- His Pathfinder Dam is now deceased but she recorded 4 BWR 97, 4 NR 104 and 2 YWR 102.
- His maternal sister is retained in the herd and currently records 2 NR 105 and 1 YWR 109.



**Sua New Design 435 RR 9654**



## Sua New Design 435 RR 9654

Birth Date: 4-2-2009  
#Bon View New Design 878  
**E&B 878 New Design 435**  
#14755368 +E&B 598 Lady Bando 251

Bull 16601896  
#B/R New Design 036  
Bon View Gammer 85  
#Bon View Bando 598  
+E&d 1483 Lady Scotchman 797

Er Emulation J122  
**Blackbird of RR 4688**  
#14774982 Blackbird of RR 8535

#N Bar Emulation EXT  
ER Forever 3218  
#Sitz Traveler 7725  
Blackbird of RR 4466

PRODUCTION EPDs				MATERNAL EPDs		CARCASS			
CED	BW	WW	YW	CEM	MILK	CW	MARB	REA	FAT
+13	-2.9	+37	+76	+14	+37	+30	+0.65	+0.24	+0.98

- This bull is a "bet the ranch" calving-ease sire with progeny proven EPDs that rank him in the top 4% for CED and top 2% for BW, CEM and Milk.
- 9654 was actually bred in the Rollin Rock program in MT and purchased from Spear U Angus where he posted enviable individual performance ratios of BWR 90, WWR 102, YWR 105, IMF ratio 136 and REA ratio 108.
- 28 progeny have a collective BWR of 94, while 9 yearling sons and daughters had an IMF ratio of 115 and REA ratio 102.



**BA In Focus 847**



## BA In Focus 847

Birth Date: 4-2-2008  
#SAF Focus of ER  
**Mytty In Focus [DF]**  
#13880818 Mytty Countess 906

Bull 16286713  
#SAF Fame  
GDAR Forever Lady 246  
#Sitz Alliance 6595  
Baldrige Countess 357

SUA LC 2202 W  
**BA Black Canyon 528**  
15273865 BA Black Focus 308

#Larks Canyon 74D4  
#Spear U Heidi 821  
Koupals B&B Focus 1011  
SAR Blackbird 561

PRODUCTION EPDs				MATERNAL EPDs		CARCASS			
CED	BW	WW	YW	CEM	MILK	CW	MARB	REA	FAT
+3	+3.5	+52	+87	+6	+18	+18	+0.38	+0.08	+0.33

- This bull earned his pasture service duties with individual performance that included a BW 83 lbs., 205 day wt. 817 lbs., and a WWR 114.
- His dam is a Larks Canyon granddaughter that records 3 NR 108 on AHIR.
- Longtime ABS Global sire, Mytty In Focus is now-deceased but will be eternally remembered as the bull that pioneered the art of uncoupling BW and growth. In Focus is the breed's #4 Pathfinder Sire with the second highest qualification rate of any bull in the top 20.

# Borns Angus RBM CC7 Y40 Sons

## Ba CC7 324

Lot 2



## Ba CC7 320

Birth Date: 3-4-2013 Bull 17717787 Tattoo: 320  
 #SydGen CC&7 #+SAF Connection  
 RBM CC7 Y40 SydGen Forever Lady 4087  
 16984247 ALC Blackbird I04U #Mytty In Focus <sup>RFI</sup>  
 +ALC Blackbird 6707

BA Navigator 815 BA Navigator 615  
 BA Miss Emulous 1150 #BA Enchantress 631  
 17136909 BA Miss Emulous 9112 SUA LC 2202 W  
 Miss Emulous of BA 1317

PRODUCTION EPDs				MATERNAL EPDs		CARCASS			
CED	BW	WW	YW	CEM	MILK	CW	MARB	REA	FAT
+14	-1.0	+44	+85	+11	+27	+29	+49	-.05	+005

- Individual Performance: BW 70 lbs., BWR 97, 205 Wt. 873 lbs., WWR 103, 365 Wt. 1316 lbs., YWR 102.
- Adjusted Ultrasound Data: %IMF 5.68, Ratio 106, REA 11.6, Rib Fat .47, Ratio 87, Rump Fat .48, Ratio 98.
- Dam's Production: 1 BWR 97, 1 NR 103, 1 YR 102. She posts 1 @ IMF 106, Rib Fat 87, Rump Fat 98.
- Born unassisted out of a first-calf heifer.
- He ranks in the top 2% for CED and top 5% for BW among non-parent bulls.
- Recommended for heifers.



## Ba CC7 324

Birth Date: 3-9-2013 Bull 17717790 Tattoo: 324  
 #SydGen CC&7 #+SAF Connection  
 RBM CC7 Y40 SydGen Forever Lady 4087  
 16984247 ALC Blackbird I04U #Mytty In Focus <sup>RFI</sup>  
 +ALC Blackbird 6707

Koupal Eclipse 771 #OCC Juneau 807J  
 BA Canyon Lady 1112 Katinka Advance 133  
 17136886 BA Canyon Lady 8118 Koupals Xception 413  
 Koupals Elba 4219

PRODUCTION EPDs				MATERNAL EPDs		CARCASS			
CED	BW	WW	YW	CEM	MILK	CW	MARB	REA	FAT
+8	+1.3	+43	+86	+7	+29	+27	+26	+22	+022

- Individual Performance: BW 79 lbs., 205 Wt. 830 lbs., WWR 98, 365 Wt. 1308 lbs., YWR 102.
- Adjusted Ultrasound Data: %IMF 4.55, REA 12.8, Rib Fat .66, Rump Fat .55.
- Dam's Production: 1 NR 98, 1 YR 102.
- Born unassisted out of a first calf heifer.
- Ranks in the top 25% for CED and top 15% for Milk among non-parent bulls.
- Recommended for heifers.



## Ba CC7 328

Birth Date: 3-12-2013 Bull 17717792 Tattoo: 328  
 #SydGen CC&7 #+SAF Connection  
 RBM CC7 Y40 SydGen Forever Lady 4087  
 16984247 ALC Blackbird I04U #Mytty In Focus <sup>RFI</sup>  
 +ALC Blackbird 6707

Koupal Eclipse 771 #OCC Juneau 807J  
 BA Lady Focus 1138 Katinka Advance 133  
 17136906 BA Lady Focus 838 #Mytty In Focus <sup>RFI</sup>  
 BA Black Focus 308

PRODUCTION EPDs				MATERNAL EPDs		CARCASS			
CED	BW	WW	YW	CEM	MILK	CW	MARB	REA	FAT
+17	-3.4	+40	+81	+14	+29	+22	+57	+47	-.006

- Individual Performance: BW 51 lbs., BWR 73, 205 Wt. 779 lbs., WWR 92, 365 Wt. 1203 lbs., YWR 94.
- Adjusted Ultrasound Data: %IMF 5.87, Ratio 109, REA 15.1, Ratio 109, Rib Fat .58, Rump Fat .31, Ratio 63.
- Dam's Production: 1 BWR 73, 1 NR 92. She posts 1 @ IMF 109, REA 109, Rump Fat 63.
- He posts the #3 CED and #3 BW EPDs in the bull sale offering.
- He ranks in the elite top 1% of non-parent bulls for CED and BW EPDs.
- Born unassisted from a first-calf heifer.
- Recommended for heifers.



Ba CC7 320 - Lot 1

# Borns Angus RBM CC7 Y48 Sons

**4**

## Ba CC7 331

Birth Date: 3-15-2013  
#SydGen CC&7  
RBM CC7 Y40  
16984247 ALC Blackbird I04U

Bull 17761140  
#+SAF Connection  
SydGen Forever Lady 4087  
#Mytty In Focus <sup>REG</sup>  
+ALC Blackbird 6707

Tattoo: 331

Koupal Eclipse 771  
BA Miss Juneau 1132  
17136902 BA Miss Juneau 8129

#OCC Juneau 807J  
Katinka Advance 133  
Koupals Juneau 3143  
Larks Emulous of BA 404

PRODUCTION EPDs				MATERNAL EPDs		CARCASS			
CED	BW	WW	YW	CEM	MILK	CW	MARB	REA	FAT
+9	+9	+46	+85	+8	+30	+24	+.61	+1.0	+0.11

- Individual Performance: BW 84 lbs., 205 Wt. 884 lbs., WWR 104, 365 Wt. 1300 lbs., YWR 101.
- Adjusted Ultrasound Data: %IMF 6.60, Ratio 123, REA 12.6, Rib Fat .54, Ratio 100, Rump Fat .43, Ratio 88.
- Dam's Production: 1 NR 104, 1 YR 101. She posts 1 @IMF 123, Rib Fat 100, Rump Fat 88.
- He posted the #5 205 day wt. and the #3 Milk EPD in the bull sale offering.
- He ranks in the top 20% for CED and the top 15% for Milk EPDs among non-parent bulls.
- Born unassisted out of a first-calf heifer.

**5**

## Ba CC7 333

Birth Date: 3-16-2013  
#SydGen CC&7  
RBM CC7 Y40  
16984247 ALC Blackbird I04U

Bull 17717802  
#+SAF Connection  
SydGen Forever Lady 4087  
#Mytty In Focus <sup>REG</sup>  
+ALC Blackbird 6707

Tattoo: 333

BA Navigator 815  
BA Xception Lady 133  
17136825 BA Hazel 941

BA Navigator 615  
#BA Enchantress 631  
BA Juneau 746  
#BA Xception Lady 733

PRODUCTION EPDs				MATERNAL EPDs		CARCASS			
CED	BW	WW	YW	CEM	MILK	CW	MARB	REA	FAT
+12	+1	+49	+98	+9	+30	+36	+.40	+.47	-.008

- Individual Performance: BW 76 lbs., 205 Wt. 869 lbs., WWR 103, 365 Wt. 1367 lbs., YWR 107.
- Adjusted Ultrasound Data: %IMF 4.67, REA 14.4, Ratio 104, Rib Fat .51, Ratio 94, Rump Fat .47, Ratio 96.
- Dam's Production: 1 NR 103, 1 YR 107. She posts 1 @REA 104, Rib Fat 94, Rump Fat 96.
- He posted the #1 YW and #2 Milk EPD as well as the #1 \$B in the bull sale offering.
- He ranks in the top 4% for CED, top 15% for BW, Milk, \$F and \$B, as well as the top 20 for YW among non-parent bulls.
- His dam is a first calf heifer that recorded enviable individual performance of WWR 109, YWR 110, IMF ratio 106 and REA ratio 119.
- Recommended for heifers.



**6**

## Ba CC7 334

Birth Date: 3-17-2013  
#SydGen CC&7  
RBM CC7 Y40  
16984247 ALC Blackbird I04U

Bull 17717803  
#+SAF Connection  
SydGen Forever Lady 4087  
#Mytty In Focus <sup>REG</sup>  
+ALC Blackbird 6707

Tattoo: 334

BA Juneau 746  
BA Larks Lady 1152  
17136915 BA Larks Lady 801

Koupals Juneau 3143  
SUA 5050 Effie 3274  
BA Initiative 607  
BA Larks Lady 675

PRODUCTION EPDs				MATERNAL EPDs		CARCASS			
CED	BW	WW	YW	CEM	MILK	CW	MARB	REA	FAT
+18	-3.5	+41	+79	+15	+27	+22	+.59	+3.9	-.003

- Individual Performance: BW 60 lbs., BWR 84, 205 Wt. 787 lbs., WWR 93, 365 Wt. 1157 lbs., YWR 90.
- Adjusted Ultrasound Data: %IMF 5.85, Ratio 109, REA 14.0, Ratio 101, Rib Fat .60, Rump Fat .43, Ratio 88.
- Dam's Production: 1 BWR 84, 1 NR 93. She posts 1 @IMF 109, REA 101, Rump Fat 88.
- He recorded the #2 CED and the #2 BW EPDs in the bull sale offering and ranks in the top 1% of the breed for those traits.
- Born unassisted out of a first-calf heifer.
- Recommended for heifers.

**7**

## Ba CC7 337

Birth Date: 3-18-2013  
#SydGen CC&7  
RBM CC7 Y40  
16984247 ALC Blackbird I04U

Bull 17717807  
#+SAF Connection  
SydGen Forever Lady 4087  
#Mytty In Focus <sup>REG</sup>  
+ALC Blackbird 6707

Tattoo: 337

+Sua Legend U8404  
BA Magie 1130  
17136901 BA Magie 912

OCC Legend 616L  
SUA 616 Supreme 111Z  
BA Right ON 610  
BA Xception Lady 714

PRODUCTION EPDs				MATERNAL EPDs		CARCASS			
CED	BW	WW	YW	CEM	MILK	CW	MARB	REA	FAT
+21	-6.0	+39	+76	+15	+26	+23	+.56	+3.2	+0.006

- Individual Performance: BW 49 lbs., BWR 71, 205 Wt. 781 lbs., WWR 92, 365 Wt. 1178 lbs., YWR 92.
- Adjusted Ultrasound Data: %IMF 5.71, Ratio 106, REA 12.8, Rib Fat .58, Rump Fat .62.
- Dam's Production: 1 BWR 71, 1 NR 92. She posts 1 @IMF 106.
- He recorded the #1 CED, #1 BW, and #3 \$B of the bull sale offering and ranks in the top elite top 1% of the breed for CED and BW EPDs. Moreover, he had the lightest actual birth weight of the sale bulls.
- Born unassisted out of a first-calf heifer.
- Recommended for heifers.

**8**

## Ba CC7 338

Birth Date: 3-21-2013  
#SydGen CC&7  
RBM CC7 Y40  
16984247 ALC Blackbird I04U

Bull 17717806  
#+SAF Connection  
SydGen Forever Lady 4087  
#Mytty In Focus <sup>REG</sup>  
+ALC Blackbird 6707

Tattoo: 338

+Sua Legend U8404  
BA Miss Morgan 124  
17136820 #BA Miss Morgan 902

OCC Legend 616L  
SUA 616 Supreme 111Z  
BA Juneau 746  
Miss Morgan BA 705

PRODUCTION EPDs				MATERNAL EPDs		CARCASS			
CED	BW	WW	YW	CEM	MILK	CW	MARB	REA	FAT
+15	-1.9	+50	+98	+11	+28	+32	+.70	+.42	+0.024

- Individual Performance: BW 68 lbs., BWR 95, 205 Wt. 847 lbs., WWR 100, 365 Wt. 1338 lbs., YWR 104.
- Adjusted Ultrasound Data: %IMF 6.42, Ratio 120, REA 12.9, Rib Fat .60, Rump Fat .61.
- Dam's Production: 1 BWR 95, 1 NR 100, 1 YR 104. She posts 1 @IMF 120.
- He shares the #4 CED and posts the #2 YW, #3 \$W and #2 \$B in the bull sale offering.
- He ranks top 1% for CED, top 2% for BW, top 20% for \$W and top 15% for \$B among non-parent bulls.
- His dam is a first-calf heifer that recorded individual performance of BWR 97, WWR 111, YWR 108, IMF ratio 105 and REA ratio 117.
- Recommended for heifers.



# Borns Angus RBM CC7 Y48 Sons



## Ba CC7 344

Birth Date: 3-30-2013  
#SydGen CC&7  
RBM CC7 Y40  
16984247 ALC Blackbird I04U

Bull 17717813  
#+SAF Connection  
SydGen Forever Lady 4087  
#Mytty In Focus <sup>REF</sup>  
+ALC Blackbird 6707

Tattoo: 344

Koupal Eclipse 771  
BA Rica 171  
17136855 BA Rica 860

#OCC Juneau 807J  
Katinka Advance 133  
Koupals Xception 413  
Koupals Rica 467

PRODUCTION EPDs				MATERNAL EPDs		CARCASS			
CED	BW	WW	YW	CEM	MILK	CW	MARB	REA	FAT
+14	-1.8	+48	+86	+11	+31	+31	+.45	+.55	+.008

- Individual Performance: BW 70 lbs., BWR 97, 205 Wt. 904 lbs., WWR 107, 365 Wt. 1285 lbs., YWR 100.
- Adjusted Ultrasound Data: %IMF 5.63, Ratio 105, REA 15.8, Ratio 114, Rib Fat .48, Ratio 89, Rump Fat .46, Ratio 94.
- Dam's Production: 1 BWR 97, 1 NR 107, 1 YR 100. She posts 1 @ IMF 105, REA 114, Rib Fat 89, Rump Fat 94.
- He posts the #3 205 day wt., the #1 Milk EPD and the #4 \$W index in the sale bull offering.
- He ranks in the top 2% for both CED and BW, top 10% for Milk and top 20% for \$W among non-parent bulls.
- Recommended for heifers.



## Ba CC7 391

Birth Date: 4-24-2013  
#SydGen CC&7  
RBM CC7 Y40  
16984247 ALC Blackbird I04U

Bull 17761129  
#+SAF Connection  
SydGen Forever Lady 4087  
#Mytty In Focus <sup>REF</sup>  
+ALC Blackbird 6707

Tattoo: 391

BA Right ON 610  
BA Emulous 095  
16829797 Miss Emulous of BA 2317

LT Right On 4060  
Koupals Tessie 4141  
SAR Viking 227  
Miss Emulous of SAR 661

PRODUCTION EPDs				MATERNAL EPDs		CARCASS			
CED	BW	WW	YW	CEM	MILK	CW	MARB	REA	FAT
+11	-1.0	+38	+75	+9	+28	+21	+.64	+.06	-.006

- Individual Performance: BW 66 lbs., BWR 93, 205 Wt. 760 lbs., WWR 99, 365 Wt. 1218 lbs., YWR 96.
- Adjusted Ultrasound Data: %IMF 5.84, Ratio 139, REA 13.2, Rib Fat .47, Ratio 98, Rump Fat .43, Ratio 91.
- Dam's Production: 1 BWR 93, 1 NR 99. She posts 1 @ IMF 139, Rib Fat 98, Rump Fat 91. Calving interval 2@317 days.
- His dam calved twins in 2012 and still managed to shorten her calving interval by a month and a half.
- He ranks in the top 10% for CED and top 5% for BW EPDs among non-parent bulls in the breed.
- Recommended for heifers.



## Ba CC7 348

Birth Date: 4-4-2013  
#SydGen CC&7  
RBM CC7 Y40  
16984247 ALC Blackbird I04U

Bull 17717816  
#+SAF Connection  
SydGen Forever Lady 4087  
#Mytty In Focus <sup>REF</sup>  
+ALC Blackbird 6707

Tattoo: 348

BA In Focus 847  
BA Luthien Queen 1126  
17136898 B ALuthien Queen 2439

#Mytty In Focus <sup>REF</sup>  
BA Black Canyon 528  
SAR Viking 227  
Luthien Queen 182

PRODUCTION EPDs				MATERNAL EPDs		CARCASS			
CED	BW	WW	YW	CEM	MILK	CW	MARB	REA	FAT
+7	+1.9	+41	+80	+6	+26	+20	+.65	+.20	-.015

- Individual Performance: BW 80 lbs., 205 Wt. 762 lbs., WWR 98, 365 Wt. 1215 lbs.
- Adjusted Ultrasound Data: %IMF 6.06, Ratio 130, REA 13.6, Rib Fat .43, Ratio 84, Rump Fat .35, Ratio 66.
- Dam's Production: 1 NR 98. She posts 1 @ IMF 130, Rib Fat 84, Rump Fat 66.
- Born unassisted out of a first-calf heifer.
- Recommended for heifers.



## Ba CC7 3107

Birth Date: 4-30-2013  
#SydGen CC&7  
RBM CC7 Y40  
16984247 ALC Blackbird I04U

Bull 17761102  
#+SAF Connection  
SydGen Forever Lady 4087  
#Mytty In Focus <sup>REF</sup>  
+ALC Blackbird 6707

Tattoo: 3107

Koupal Eclipse 771  
BA Pride 928  
16642638 #BA Cowgirl 638

#OCC Juneau 807J  
Katinka Advance 133  
SUA Cowboy 419P  
Focus of Blackbird 418

PRODUCTION EPDs				MATERNAL EPDs		CARCASS			
CED	BW	WW	YW	CEM	MILK	CW	MARB	REA	FAT
+13	-1.7	+42	+88	+10	+26	+28	+.34	+.29	+.011

- Individual Performance: BW 60 lbs., BWR 82, 205 Wt. 693 lbs., WWR 90, 365 Wt. 1275 lbs., YWR 101.
- Adjusted Ultrasound Data: %IMF 4.00, REA 13.4, Rib Fat .59, Rump Fat .42, Ratio 89.
- Dam's Production: 3 NR 94, 2 YR 100. She posts 2 @ REA 102, Rump Fat 92.
- His 2011 maternal brother by "Legend" was selected by Jim Hunter, Hayti, SD.
- He ranks in the top 3% for CED and top 2% for BW EPDs.
- Recommended for heifers.



Travis, Shaylin and Ava Borns

# Borns Angus Legend U8404 Sons

## Ba Legend 304

Lot 13



## 13 Ba Legend 304

Birth Date: 2-18-2013  
OCC Legend 616L  
Sua Legend U8404  
+16567512 SUA 616 Supreme 111Z

Bull 17717783  
#+OCC Emblazon 854E  
OCC Blackbird 632J  
#Rito 616 of 4B20 6807  
SUA 5N10 Supreme 9100

Tattoo: 304

BA Navigator 815  
BA Navigator 114  
17136812 #BA Viking Lady 9138

BA Navigator 615  
#BA Enchantress 631  
SUA LC 2202 W  
BA Viking Queen 2412

PRODUCTION EPDs				MATERNAL EPDs		CARCASS			
CED	BW	WW	YW	CEM	MILK	CW	MARB	REA	FAT
+9	+7	+59	+93	+5	+18	+32	+14	+31	+002

- Individual Performance: BW 78 lbs., 205 Wt. 972 lbs., WWR 115, 365 Wt. 1390 lbs., YWR 108.
- Adjusted Ultrasound Data: %IMF 4.47, REA 13.9, Ratio 100, Rib Fat .42, Ratio 78, Rump Fat .38, Ratio 78.
- Dam's Production: 1 NR 115, 1 YR 108. She posts 1 @ REA 100, Rib Fat 78, Rump Fat 78.
- He records the #1 205 day wt., the #1 WW, #3 YW and #1 \$W values in the bull sale offering.
- He balances CED and BW EPDs in the top 25% with WW and \$W values in the top 10% of non-parent bulls.
- Born unassisted out of a first-calf heifer.
- His dam earned her entrance into the Borns' breeding program with individual performance that featured a BWR 100, WWR 117 and YWR 109.
- Recommended for heifers.

## 14 BA Legend 312

Birth Date: 2-25-2013  
OCC Legend 616L  
Sua Legend U8404  
+16567512 SUA 616 Supreme 111Z

Bull 17761137  
#+OCC Emblazon 854E  
OCC Blackbird 632J  
#Rito 616 of 4B20 6807  
SUA 5N10 Supreme 9100

Tattoo: 312

Koupal Eclipse 771  
Forcus of BA 180  
17136864 Focus of BA 875

#OCC Juneau 807J  
Katinka Advance 133  
SUA LC 2202 W  
Miss Focus BA 523

PRODUCTION EPDs				MATERNAL EPDs		CARCASS			
CED	BW	WW	YW	CEM	MILK	CW	MARB	REA	FAT
1+8	1+6	1+49	1+81	1+6	1+15	1+20	1+18	1+51	1+.010

- Individual Performance: BW 76 lbs., BWR 100, 205 Wt. 940 lbs., WWR 100, 365 Wt. 1303 lbs., YWR 100.
- Adjusted Ultrasound Data: %IMF 4.14, Ratio 100, REA 15.2, Ratio 100, Rib Fat .34, Ratio 100, Rump Fat .26, Ratio 100.
- Dam's Production: 1 BWR 100, 1 NR 100, 1 YR 100. She posts 1 @ IMF 100, REA 100, Rib Fat 100, Rump Fat 100.
- At 940 lbs. he posted one of the highest 205 day weights in the sale offering.
- He shares the 3rd lightest birth weight in the sale bull offering.
- Born unassisted out of a first-calf heifer.
- Recommended for heifers.

## 15 BA Legend 322

Birth Date: 3-7-2013  
OCC Legend 616L  
Sua Legend U8404  
+16567512 SUA 616 Supreme 111Z

Bull 17717789  
#+OCC Emblazon 854E  
OCC Blackbird 632J  
#Rito 616 of 4B20 6807  
SUA 5N10 Supreme 9100

Tattoo: 322

BA Right ON 610  
BA Larks Blanche 1151  
17136916 BA Lady Blanche 1303

LT Right On 4060  
Koupals Tessie 4141  
SAR Viking 227  
Lady Blanche 591

PRODUCTION EPDs				MATERNAL EPDs		CARCASS			
CED	BW	WW	YW	CEM	MILK	CW	MARB	REA	FAT
+8	+6	+37	+74	+4	+14	+16	+28	+19	-.027

- Individual Performance: BW 78 lbs., 205 Wt. 802 lbs., WWR 95, 365 Wt. 1300 lbs., YWR 101.
- Adjusted Ultrasound Data: %IMF 5.36, Ratio 100, REA 13.8, Rib Fat .33, Ratio 61, Rump Fat .35, Ratio 71.
- Dam's Production: 1 NR 95, 1 YR 101. She posts 1 @ IMF 100, Rib Fat 61, Rump Fat 71.
- Born unassisted out of a first-calf heifer.
- Ranks in the top 25% for both CED and BW EPDs and in the top 10% for \$EN.
- Recommended for heifers.



BA Legend 312 - Lot 14

# Borns Angus Legend U8404 Sons

## BA Legend 352

Lot 17



## 1.6 BA Legend 351

Birth Date: 4-5-2013  
OCC Legend 616L  
Sua Legend U8404  
+16567512 SUA 616 Supreme 111Z

Bull 17717818  
#+OCC Emblazon 854E  
OCC Blackbird 632J  
#Rito 616 of 4B20 6807  
SUA 5N10 Supreme 9100

Tattoo: 351

SUA Cowboy 419P  
BA Queenie 9168  
16642637 BA Queenie 635

SUA RH Cowboy 1210Z  
SUA Canyon Merideth 211  
#+Whitestone Xception  
Koupals Queenie 4205

PRODUCTION EPDs				MATERNAL EPDs		CARCASS			
CED	BW	WW	YW	CEM	MILK	CW	MARB	REA	FAT
+6	+2.7	+50	+88	+5	+16	+27	+.25	+.30	+.026

- Individual Performance: BW 90 lbs., 205 Wt. 838 lbs., WWR 107, 365 Wt. 1312 lbs., YWR 104.
- Adjusted Ultrasound Data: %IMF 4.70, Ratio 101, REA 12.9, Rib Fat .61, Rump Fat .51, Ratio 96.
- Dam's Production: 3 NR 99, 2 YR 100. Calving Interval 3@355 days. She posts 3 @IMF 103.
- His maternal sister recorded a 114 IMF ratio and was selected by Terry Jones, Towner, ND for his breeding program.
- Another maternal sister is retained in the Borns herd and weaned her first calf posting progeny ratios of 1 BWR 97 and 1 NR 106.
- Ranks in the top 20% for \$EN among non-parent bulls.

## 1.7 BA Legend 352

Birth Date: 4-5-2013  
OCC Legend 616L  
Sua Legend U8404  
+16567512 SUA 616 Supreme 111Z

Bull 17717819  
#+OCC Emblazon 854E  
OCC Blackbird 632J  
#Rito 616 of 4B20 6807  
SUA 5N10 Supreme 9100

Tattoo: 352

SUA LC 2202 W  
BA Larks Lady 069  
16842759 First Time Lady 532

#Larks Canyon 74D4  
#Spear U Heidi 821  
Focus of BA30  
Franco Blanche 61

PRODUCTION EPDs				MATERNAL EPDs		CARCASS			
CED	BW	WW	YW	CEM	MILK	CW	MARB	REA	FAT
+6	+1.8	+50	+77	+5	+11	+17	+.29	+.37	+.033

- Individual Performance: BW 80 lbs., 205 Wt. 853 lbs., WWR 109, 365 Wt. 1251 lbs.
- Adjusted Ultrasound Data: %IMF 5.03, Ratio 108, REA 14.7, Ratio 107, Rib Fat .60, Rump Fat .62.
- Dam's Production: 2 BWR 98, 2 NR 102. She posts 2 @IMF 121, REA 104.
- This bull has an enviable performance portfolio yet he posts a \$EN in the top 10% of non-parent bulls.
- His 2011 maternal brother recorded a 134 IMF ratio and now serves in Judy Frederichs' breeding program at Artesian, SD.
- Recommended for heifers.

## 1.8 BA Legend 353

Birth Date: 4-6-2013  
OCC Legend 616L  
Sua Legend U8404  
+16567512 SUA 616 Supreme 111Z

Bull 17717820  
#+OCC Emblazon 854E  
OCC Blackbird 632J  
#Rito 616 of 4B20 6807  
SUA 5N10 Supreme 9100

Tattoo: 353

BA Navigator 615  
BA Xception Lady 0151  
16829790 BA Xception Lady 726

#Baldridge Navigator N5  
Koupals Ebonette 4140  
Koupals Xception 413  
Focus Lady 424

PRODUCTION EPDs				MATERNAL EPDs		CARCASS			
CED	BW	WW	YW	CEM	MILK	CW	MARB	REA	FAT
+11	-1.3	+54	+92	+8	+18	+33	+.06	+.37	+.015

- Individual Performance: BW 75 lbs., 205 Wt. 912 lbs., WWR 117, 365 Wt. 1400 lbs., YWR 111.
- Adjusted Ultrasound Data: %IMF 3.43, REA 13.6, Rib Fat .49, Ratio 96, Rump Fat .60.
- Dam's Production: 2 BWR 95, 2 NR 113, 2 YR 110. She posts 2 @ REA 108, Rib Fat 94.
- This bull posted the #2 heaviest 205 day wt., the #3 WW EPD and the #2 \$W value in the sale bull offering.
- His 2012 full sister posted equally impressive individual performance and was systematically retained in the breeding program.
- Recommended for heifers.

## 1.9 BA Legend 357

Birth Date: 4-10-2013  
OCC Legend 616L  
Sua Legend U8404  
+16567512 SUA 616 Supreme 111Z

Bull 17717824  
#+OCC Emblazon 854E  
OCC Blackbird 632J  
#Rito 616 of 4B20 6807  
SUA 5N10 Supreme 9100

Tattoo: 357

SUA Cowboy 419P  
BA Regal Lady 9154  
16642679 Larks Queen of BA 410

SUA RH Cowboy 1210Z  
SUA Canyon Merideth 211  
SUA LC 2202 W  
Queen of BA 2410

PRODUCTION EPDs				MATERNAL EPDs		CARCASS			
CED	BW	WW	YW	CEM	MILK	CW	MARB	REA	FAT
+8	+1.4	+44	+77	+6	+11	+17	+.42	+.37	-.005

- Individual Performance: BW 76 lbs., 205 Wt. 737 lbs., WWR 94, 365 Wt. 1156 lbs.
- Adjusted Ultrasound Data: %IMF 5.94, Ratio 128, REA 13.7, Ratio 100, Rib Fat .37, Ratio 73.
- Dam's Production: 2 NR 94. She posts 2 @IMF 107, Rib Fat 82, Rump Fat 79.
- His maternal brother was selected by Paul Farrell, Milbank, SD in 2012.
- Ranks in the top 10% for \$EN among non-parent bulls.
- Recommended for heifers.

# Borns Angus Legend U8404 Sons

## 20 BA Legend 359 DDF

Birth Date: 4-11-2013 Bull 17717826 Tattoo: 359  
 OCC Legend 616L #+OCC Emblazon 854E  
**Sua Legend U8404** OCC Blackbird 632J  
 +16567512 SUA 616 Supreme 111Z #Rito 616 of 4B20 6807  
 SUA 5N10 Supreme 9100

BA Juneau 746 Koupals Juneau 3143  
**BA 5050 0162** SUA 5050 Effie 3274  
 16842779 BA Focus Lady 309 Koupals B&B Focus 1011  
 BA Fantom Lady 40

PRODUCTION EPDs				MATERNAL EPDs			CARCASS			
CED	BW	WW	YW	CEM	MILK	CW	MARB	REA	FAT	
+9	+.5	+47	+97	+6	+15	+27	+.42	+.34	+.010	

- Individual Performance: BW 74 lbs., 205 Wt. 796 lbs., WWR 102, 365 Wt. 1481 lbs., YWR 118.
- Adjusted Ultrasound Data: %IMF 5.52, Ratio 119, REA 13.8, Ratio 101, Rib Fat .68, Rump Fat .36, Ratio 68.
- Dam's Production: 2 BWR 90, 2 NR 95, 2 YR 104. Calving Interval 2@369 days. She posts 2 @IMF 116, Rump Fat 75.
- He ranks in the top 20% for both CED and BW with a \$EN in the top 15% of non-parent bulls.
- His 2012 maternal sister is retained in the Borns Angus breeding program.
- Recommended for heifers.

## 23 BA Legend 375

Birth Date: 4-15-2013 Bull 17717838 Tattoo: 375  
 OCC Legend 616L #+OCC Emblazon 854E  
**Sua Legend U8404** OCC Blackbird 632J  
 +16567512 SUA 616 Supreme 111Z #Rito 616 of 4B20 6807  
 SUA 5N10 Supreme 9100

BA Juneau 746 Koupals Juneau 3143  
**BARH Forever 021** SUA 5050 Effie 3274  
 16871722 SUA RH Forever 4184P Spear U Ranch Hand 8303  
 Spear U 711 533

PRODUCTION EPDs				MATERNAL EPDs			CARCASS			
CED	BW	WW	YW	CEM	MILK	CW	MARB	REA	FAT	
+10	+.1	+46	+83	+7	+12	+21	+.34	+.41	+.001	

- Individual Performance: BW 72 lbs., BWR 99, 205 Wt. 778 lbs., WWR 100, 365 Wt. 1285 lbs., YWR 102.
- Adjusted Ultrasound Data: %IMF 4.60, REA 13.2, Rib Fat .47, Ratio 92, Rump Fat .47, Ratio 89.
- Dam's Production: 2 NR 96, 1 YR 102. Calving Interval 2@306 days.
- His 2012 maternal sister by "Navigator" is retained.
- He ranks in the top 15% for both CED and BW EPDs and in the top 10% for \$EN among non-parent bulls.
- Recommended for heifers.

## 21 BA Legend 372

Birth Date: 4-14-2013 Bull 17717835 Tattoo: 372  
 OCC Legend 616L #+OCC Emblazon 854E  
**Sua Legend U8404** OCC Blackbird 632J  
 +16567512 SUA 616 Supreme 111Z #Rito 616 of 4B20 6807  
 SUA 5N10 Supreme 9100

SUA Cowboy 419P Koupals New Pride 4121  
 BA Doll 987 16642670  
 SUA RH Cowboy 1210Z  
 SUA Canyon Merideth 211  
 Baldrige Leon L92  
 Beefland New Pride 9159

PRODUCTION EPDs				MATERNAL EPDs			CARCASS			
CED	BW	WW	YW	CEM	MILK	CW	MARB	REA	FAT	
+11	+.4	+44	+82	+9	+8	+22	+.32	+.39	+.009	

- Individual Performance: BW 72 lbs., BWR 97, 205 Wt. 747 lbs., WWR 96, 365 Wt. 1254 lbs., YWR 100.
- Adjusted Ultrasound Data: %IMF 4.93, Ratio 106, REA 14.3, Ratio 104, Rib Fat .41, Ratio 80, Rump Fat .67.
- Dam's Production: 3 BWR 89, 3 NR 89. She posts 3 @IMF 106, Rib Fat 92, Rump Fat 93.
- He records the #2 \$EN value in the sale bull offering.
- His only maternal sister is retained in the Borns herd.
- He ranks in the top 10% for CED, top 20% for BW and top 4% for \$EN among non-parent bulls in the breed.
- Recommended for heifers.

## 24 BA Legend 389 DDF

Birth Date: 4-23-2013 Bull 17761142 Tattoo: 389  
 OCC Legend 616L #+OCC Emblazon 854E  
**Sua Legend U8404** OCC Blackbird 632J  
 +16567512 SUA 616 Supreme 111Z #Rito 616 of 4B20 6807  
 SUA 5N10 Supreme 9100

BA Xception 993 Koupals Xception 413  
**BA Zara 1157** BA Canyon Queen 514  
 17136917 BA Zara 8136 SUA LC 2202 W  
 Koupals Zara 429

PRODUCTION EPDs				MATERNAL EPDs			CARCASS			
CED	BW	WW	YW	CEM	MILK	CW	MARB	REA	FAT	
+7	+1.6	+53	+93	+5	+16	+27	+.19	+.27	+.009	

- Individual Performance: BW 80 lbs., 205 Wt. 866 lbs., WWR 111, 365 Wt. 1416 lbs., YWR 113.
- Adjusted Ultrasound Data: %IMF 4.67, Ratio 100, REA 13.8, Ratio 101, Rib Fat .44, Ratio 86, Rump Fat .46, Ratio 87.
- Dam's Production: 1 NR 111, 1 YR 113. She posts 1 @IMF 100, REA 101, Rib Fat 86, Rump Fat 87.
- He records the #4 WW EPD in the sale bull offering.
- Born unassisted out of a first-calf heifer.
- This "Legend" son is one of the pre-weaning high achievers in the sale. Mark him a "must see" on sale day.
- Recommended for heifers.

## 22 BA Legend 373

Birth Date: 4-14-2013 Bull 17717836 Tattoo: 373  
 OCC Legend 616L #+OCC Emblazon 854E  
**Sua Legend U8404** OCC Blackbird 632J  
 +16567512 SUA 616 Supreme 111Z #Rito 616 of 4B20 6807  
 SUA 5N10 Supreme 9100

BA Navigator 615 #Baldrige Navigator N5  
**BA Rica 057** Koupals Ebonette 4140  
 16829772 Koupals Rica 419 +Bluegrass New Design 203  
 #Koupals Rica 283

PRODUCTION EPDs				MATERNAL EPDs			CARCASS			
CED	BW	WW	YW	CEM	MILK	CW	MARB	REA	FAT	
+14	-2.3	+48	+86	+10	+15	+29	+.16	+.45	+.027	

- Individual Performance: BW 70 lbs., BWR 97, 205 Wt. 811 lbs., WWR 104, 365 Wt. 1333 lbs., YWR 106.
- Adjusted Ultrasound Data: %IMF 3.64, REA 14.1, Ratio 103, Rib Fat .67, Rump Fat .56.
- Dam's Production: 2 BWR 88, 2 NR 102, 1 YR 106. Calving Interval 2@335 days. She posts 1 @REA 103.
- He posts the #5 lowest BW EPD in the sale bull offering.
- His 2012 maternal sister by "Navigator" is retained.
- He ranks in the top 2% for CED, top 1% for BW, and top 15% for \$EN among non-parent bulls.
- Recommended for heifers.



# Borns Angus Navigator 815 Sons



**BA Navigator 349 - Lot 25**

## 27 BA Navigator 379

Birth Date: 4-17-2013  
 BA Navigator 615  
**BA Navigator 815**  
 16284876 #BA Enchantress 631

Bull 17717841  
 #Baldrige Navigator N5  
 Koupals Ebonette 4140  
 #+Whitestone Xception  
 Koupals Enchantress 4114

Tattoo: 379

Koupals Xception 413  
**BA Alice 9110**  
 16642657 BA Lady Blanche 1303

#+Whitestone Xception  
 Koupals Elnah 256  
 SAR Viking 227  
 Lady Blanche 591

PRODUCTION EPDs				MATERNAL EPDs		CARCASS			
CED	BW	WW	YW	CEM	MILK	CW	MARB	REA	FAT
+10	-.4	+35	+66	+7	+19	+20	-.04	+.28	+.008

- Individual Performance: BW 70 lbs., BWR 94, 205 Wt. 768 lbs., WWR 98, 365 Wt. 1202 lbs.
- Adjusted Ultrasound Data: %IMF 3.97, REA 14.6, Ratio 107, Rib Fat .41, Ratio 80, Rump Fat .49, Ratio 92.
- Dam's Production: 3 NR 98, YR 101. She posts 3 @ REA 107.
- His maternal brother was selected from the 2013 sale offering by Darrell Seefeldt, Clark, SD while his maternal sister is retained in the Borns herd where she weaned her first calf with a 104 NR and 104 YWR.
- He ranks in the top 15% for CED and \$EN and in the top 10% for BW among non-parent bulls.
- Recommended for heifers.

## 25 BA Navigator 349

Birth Date: 4-4-2013  
 BA Navigator 615  
**BA Navigator 815**  
 16284876 #BA Enchantress 631

Bull 17717817  
 #Baldrige Navigator N5  
 Koupals Ebonette 4140  
 #+Whitestone Xception  
 Koupals Enchantress 4114

Tattoo: 349

BA In Focus 834  
**BA Tammy 020**  
 16863517 BA Tammy 8139

#Mytty In Focus 709  
 Koupals Rica 419  
 BA Right ON 610  
 BA Elba 624

PRODUCTION EPDs				MATERNAL EPDs		CARCASS			
CED	BW	WW	YW	CEM	MILK	CW	MARB	REA	FAT
+10	-.4	+46	+85	+10	+23	+30	+.24	+.26	+.017

- Individual Performance: BW 76 lbs., 205 Wt. 824 lbs., WWR 106, 365 Wt. 1338 lbs., YWR 107.
- Adjusted Ultrasound Data: %IMF 4.78, Ratio 103, REA 13.6, Rib Fat .53, Rump Fat .55.
- Dam's Production: 1 NR 106, 1 YR 107. She posts 1 @ IMF 103.
- His dam posted individual performance of BWR 94, WWR 115, YWR 115 and was systematically inducted into the Borns Angus breeding program.
- He ranks in the top 15% for CED and top 10% for BW EPDs among non-parent bulls.
- Recommended for heifers.

## 28 BA Navigator 382

Birth Date: 4-19-2013  
 BA Navigator 615  
**BA Navigator 815**  
 16284876 #BA Enchantress 631

Bull 17761101  
 #Baldrige Navigator N5  
 Koupals Ebonette 4140  
 #+Whitestone Xception  
 Koupals Enchantress 4114

Tattoo: 382

SUA Cowboy 419P  
**BA Elba 979**  
 16642633 BA Elba 620

SUA RH Cowboy 1210Z  
 SUA Canyon Merideth 211  
 #Baldrige Navigator N5  
 Koupals Elba 4198

PRODUCTION EPDs				MATERNAL EPDs		CARCASS			
CED	BW	WW	YW	CEM	MILK	CW	MARB	REA	FAT
+11	-.2	+39	+75	+10	+19	+32	+.18	+.42	+0

- Individual Performance: BW 68 lbs., BWR 92, 205 Wt. 787 lbs., WWR 101, 365 Wt. 1232 lbs.
- Adjusted Ultrasound Data: %IMF 4.73, Ratio 102, REA 14.9, Ratio 109, Rib Fat .39, Ratio 76, Rump Fat .44, Ratio 83.
- Dam's Production: 3 BWR 100, 3 NR 103, 3 YR 103.
- Maternal brothers have sold to Vander Linden Farms, Webster, SD and to Terry Jones, Towner, ND.
- He ranks in the top 10% for CED, top 15% for BW and top 25% for \$EN among non-parent bulls in the breed.
- Recommended for heifers.

## 26 BA Navigator 355

Birth Date: 4-8-2013  
 BA Navigator 615  
**BA Navigator 815**  
 16284876 #BA Enchantress 631

Bull 17717822  
 #Baldrige Navigator N5  
 Koupals Ebonette 4140  
 #+Whitestone Xception  
 Koupals Enchantress 4114

Tattoo: 355

#Sitz Upward 307R  
**Foxs Blackcap Empress 76X**  
 16791150 Foxs Blackcap Empress 99T

#Connealy Onward  
 Sitz Henrietta Pride 81M  
 Foxs Dateline 158  
 Foxs Blackcap Empress 167

PRODUCTION EPDs				MATERNAL EPDs		CARCASS			
CED	BW	WW	YW	CEM	MILK	CW	MARB	REA	FAT
+11	-1.0	+47	+96	+9	+26	+44	+.09	+.26	+.022

- Individual Performance: BW 68 lbs., BWR 94, 205 Wt. 833 lbs., WWR 107, 365 Wt. 1411 lbs., YWR 112.
- Adjusted Ultrasound Data: %IMF 3.79, REA 13.6, Rib Fat .68, Rump Fat .54.
- Dam's Production: 1 BWR 94, 1 NR 107, 1 YR 112.
- His dam was a feature in the 2011 Fox Angus Farms Sale and came to Borns with an impressive +.9 to +101 BW to YW spread.
- He ranks in the top 10% for CED and top 5% for BW among non-parent bulls.
- Recommended for heifers.

## 29 BA Navigator 394

Birth Date: 4-27-2013  
 BA Navigator 615  
**BA Navigator 815**  
 16284876 #BA Enchantress 631

Bull 17761098  
 #Baldrige Navigator N5  
 Koupals Ebonette 4140  
 #+Whitestone Xception  
 Koupals Enchantress 4114

Tattoo: 394

Koupal Eclipse 771  
**BA Blanche 923**  
 16642626 BA Focus Blanche 517

#OCC Juneau 807J  
 Katinka Advance 133  
 Koupals B&B Focus 1011  
 Lady Blanche 292

PRODUCTION EPDs				MATERNAL EPDs		CARCASS			
CED	BW	WW	YW	CEM	MILK	CW	MARB	REA	FAT
+7	+0	+34	+72	+7	+22	+25	+.05	+.37	+.009

- Individual Performance: BW 72 lbs., BWR 98, 205 Wt. 726 lbs., WWR 94, 365 Wt. 1278 lbs., YWR 101.
- Adjusted Ultrasound Data: %IMF 4.30, Ratio 102, REA 14.6, Ratio 101, Rib Fat .40, Ratio 83, Rump Fat .48.
- Dam's Production: 3 BWR 100, 3 NR 96, 3 YR 101. She posts 3 @ REA 101, Rib Fat 93.
- His 2012 maternal sister was selected by Samuel Watt, Estelline, SD while his 2011 sister is retained in the herd where she currently posts 1 NR 103 and 1 YWR 104 on AHIR.
- Recommended for heifers.

# Borns Angus Cowboy 994 Sons

## 30 BA Cowboy 383

Birth Date: 4-19-2013  
SUA Cowboy 419P  
BA Cowboy 994  
16642672 Koupals Zara 4163

Bull 17761119  
SUA RH Cowboy 1210Z  
SUA Canyon Merideth 211  
+Bluegrass New Design 203  
Koupals Zara 2298

Tattoo: 383

SUA LC 2202 W  
BA 616 Ethel 035  
16829748 #SUA 616 Ethel 3353

#Larks Canyon 74D4  
#Spear U Heidi 821  
#Rito 616 of 4B20 6807  
SUA 5U22 Ethel 996

PRODUCTION EPDs				MATERNAL EPDs		CARCASS			
CED	BW	WW	YW	CEM	MILK	CW	MARB	REA	FAT
+5	+3.7	+52	+91	+8	+15	+26	+.21	+.17	+0.04

- Individual Performance: BW 80 lbs., 205 Wt. 812 lbs., WWR 104, 365 Wt. 1318 lbs., YWR 105.
- Adjusted Ultrasound Data: %IMF 4.59, REA 13.2, Rib Fat .39, Ratio 76, Rump Fat .52, Ratio 98.
- Dam's Production: 2 NR 101, 1 YR 105. Calving Interval 2@340 days.
- His dam bested her contemporaries with individual performance highlighted by a WWR 121 and YWR 119. Her first calf was a "Navigator" daughter that has been retained in the herd.
- Pathfinder grandam.

## 32 BA Cowboy 399 [DDF]

Birth Date: 4-29-2013  
SUA Cowboy 419P  
BA Cowboy 994  
16642672 Koupals Zara 4163

Bull 17761097  
SUA RH Cowboy 1210Z  
SUA Canyon Merideth 211  
+Bluegrass New Design 203  
Koupals Zara 2298

Tattoo: 399

Koupals Xception 413  
BA Zara 971  
16642603 Koupals Zara 429

#Whitestone Xception  
Koupals Ellanah 256  
Whitestone Traveler M021  
Koupals Zara 1405

PRODUCTION EPDs				MATERNAL EPDs		CARCASS			
CED	BW	WW	YW	CEM	MILK	CW	MARB	REA	FAT
+2	+5.0	+39	+75	+5	+19	+24	+.10	+.40	-.012

- Individual Performance: BW 96 lbs., 205 Wt. 705 lbs., WWR 92, 365 Wt. 1247 lbs., YWR 98.
- Adjusted Ultrasound Data: %IMF 3.98, REA 15.2, Ratio 106, Rib Fat .28, Ratio 58, Rump Fat .32, Ratio 68.
- Dam's Production: 2 NR 96. She posts 2 @REA 105, Rib Fat 81, Rump Fat 76.
- His dam posted individual performance of BWR 101 and WWR 115 and was systematically inducted into the Borns Angus breeding program.
- His maternal brother was selected from the 2013 offering by Dana Sippel, Pierpont, SD.

## 31 BA Cowboy 398

Birth Date: 4-28-2013  
SUA Cowboy 419P  
BA Cowboy 994  
16642672 Koupals Zara 4163

Bull 17761106  
SUA RH Cowboy 1210Z  
SUA Canyon Merideth 211  
+Bluegrass New Design 203  
Koupals Zara 2298

Tattoo: 398

BA Direction 712  
BA Daisy 970  
16642647 BA Xception Lady 730

#Morgans Direction 111 9901 [DDF]  
Ba Focus Blanche 517  
Koupals Xception 413  
B&B Zara 4075

PRODUCTION EPDs				MATERNAL EPDs		CARCASS			
CED	BW	WW	YW	CEM	MILK	CW	MARB	REA	FAT
1+7	+6.7	+43	+79	1+8	+24	+30	+.23	+.37	+0.15

- Individual Performance: BW 104 lbs., 205 Wt. 797 lbs., WWR 104, 365 Wt. 1349 lbs., YWR 107.
- Adjusted Ultrasound Data: %IMF 4.42, Ratio 105, REA 14.5, Ratio 101, Rib Fat .52, Rump Fat .52.
- Dam's Production: 3 NR 111, 3 YR 108. She posts 3 @REA 104.
- Maternal brothers have sold to Jon Vos, Clark, SD and to Vander Linden Farms, Webster, SD.
- Progeny of Cowboy have gobs of eye appeal, are clean, correct and enjoy a very unique pedigree make-up.

## 33 BA Cowboy 3100

Birth Date: 4-29-2013  
SUA Cowboy 419P  
BA Cowboy 994  
16642672 Koupals Zara 4163

Bull 17761111  
SUA RH Cowboy 1210Z  
SUA Canyon Merideth 211  
+Bluegrass New Design 203  
Koupals Zara 2298

Tattoo: 3100

Koupals Xception 413  
BA Lauren 964  
#16642662 BA Blackbird 2331

#Whitestone Xception  
Koupals Ellanah 256  
SAR Viking 227  
SAR Blackbird 851

PRODUCTION EPDs				MATERNAL EPDs		CARCASS			
CED	BW	WW	YW	CEM	MILK	CW	MARB	REA	FAT
+5	+2.8	+44	+69	+6	+21	+21	+.16	+.18	+.017

- Individual Performance: BW 78 lbs., 205 Wt. 846 lbs., WWR 110, 365 Wt. 1316 lbs., YWR 104.
- Adjusted Ultrasound Data: %IMF 4.77, Ratio 113, REA 14.9, Ratio 103, Rib Fat .57, Rump Fat .41, Ratio 87.
- Dam's Production: 3 NR 109.
- Pathfinder Dam.
- He ranks in the breed's top 20% for \$EN despite an impressive pre-weaning performance, so "have your cake and eat it, too."
- Recommended for heifers.



BA Cowboy 398 - Lot 31

## 34 BA Cowboy 3104

Birth Date: 4-29-2013  
SUA Cowboy 419P  
BA Cowboy 994  
16642672 Koupals Zara 4163

Bull 17761100  
SUA RH Cowboy 1210Z  
SUA Canyon Merideth 211  
+Bluegrass New Design 203  
Koupals Zara 2298

Tattoo: 3104

Koupals Xception 413  
BA Black Canyon 982  
16642630 BA Black Canyon 528

#Whitestone Xception  
Koupals Ellanah 256  
SUA LC 2202 W  
BA Black Focus 308

PRODUCTION EPDs				MATERNAL EPDs		CARCASS			
CED	BW	WW	YW	CEM	MILK	CW	MARB	REA	FAT
+9	+2.4	+41	+77	+11	+16	+24	+.07	+.29	+.011

- Individual Performance: BW 72 lbs., BWR 98, 205 Wt. 724 lbs., WWR 94, 365 Wt. 1297 lbs., YWR 103.
- Adjusted Ultrasound Data: %IMF 4.12, REA 15.3, Ratio 106, Rib Fat .45, Ratio 94, Rump Fat .43, Ratio 91.
- Dam's Production: 3 BWR 90, 3 NR 94.
- His maternal sister was selected from the 2013 offering by Samuel Watt, Estelline, SD.
- He ranks in the top 20% for CED and in the top 10 for \$EN among non-parent bulls in the breed.

# Borns Angus Cowboy 994 and Xception 993 Sons



## BA Cowboy 3109

Lot 35

### 35 BA Cowboy 3109

Birth Date: 5-1-2013  
SUA Cowboy 419P  
Bull 17761112  
SUA RH Cowboy 1210Z  
SUA Canyon Merideth 211  
+Bluegrass New Design 203  
Koupals Zara 2298  
Tattoo: 3109

BA Cowboy 994  
16642672 Koupals Zara 4163

Koupals Xception 413  
BA Becca 9122  
16642665 BA Black Focus 308

#Whitestone Xception  
Koupals Ellanah 256  
Koupals B&B Focus 1011  
SAR Blackbird 561

PRODUCTION EPDs				MATERNAL EPDs		CARCASS				
CED	BW	WW	YW	CEM	MILK	CW	MARB	REA	FAT	
+10	+1.0	+46	+81	+10	+19	+25	+17	+43	+025	

- Individual Performance: BW 70 lbs., BWR 96, 205 Wt. 818 lbs., WWR 106, 365 Wt. 1330 lbs., YWR 105.
- Adjusted Ultrasound Data: %IMF 4.45, Ratio 106, REA 16.0, Ratio 111, Rib Fat .56, Rump Fat .55.
- Dam's Production: 3 NR 102, 3 YR 103. She posts 3 @IMF 107, REA 106, Rib Fat 99.
- His maternal brother is working in the Gullickson Angus herd at Halliday, ND.
- He ranks in the top 15% for CED and top 20% for \$EN among non-parent bulls in the breed.
- Recommended for heifers.

### 36 BA Cowboy 3110

Birth Date: 5-4-2013  
SUA Cowboy 419P  
Bull 17761121  
SUA RH Cowboy 1210Z  
SUA Canyon Merideth 211  
+Bluegrass New Design 203  
Koupals Zara 2298  
Tattoo: 3110

BA Cowboy 994  
16642672 Koupals Zara 4163

BA Navigator 615  
BA Eileenmere 0134  
16829781 BA Eileenmere 605

#Baldridge Navigator N5  
Koupals Ebonette 4140  
#BCC Bushwacker 41-93  
Koupals Eileenmere 4153

PRODUCTION EPDs				MATERNAL EPDs		CARCASS				
CED	BW	WW	YW	CEM	MILK	CW	MARB	REA	FAT	
+7	+2.2	+49	+81	+9	+18	+28	+09	+29	+023	

- Individual Performance: BW 72 lbs., 205 Wt. 845 lbs., WWR 110, 365 Wt. 1255 lbs., YWR 99.
- Adjusted Ultrasound Data: %IMF 3.17, REA 13.8, Rib Fat .61, Rump Fat .46, Ratio 98.
- Dam's Production: 2 BWR 100, 2 NR 101. Calving Interval 2@348 days.
- His 2012 maternal sister by "Navigator" is retained in the Borns Angus breeding program.
- Recommended for heifers.

### 37 BA Xception 388

Birth Date: 4-18-2013  
Koupals Xception 413  
Bull 17761117  
#+Whitestone Xception  
Koupals Ellanah 256  
SUA LC 2202 W  
Queen of SAR42  
Tattoo: 380

BA Xception 993  
17003199 BA Canyon Queen 514

Koupal Eclipse 771  
BA 5050 Effie 929  
16642683 #BA 5050 Effie 6108

#OCC Juneau 807J  
Katinka Advance 133  
Koupals Juneau 3143  
SUA 5050 Effie 3274

PRODUCTION EPDs				MATERNAL EPDs		CARCASS				
CED	BW	WW	YW	CEM	MILK	CW	MARB	REA	FAT	
+7	+7	+43	+83	+8	+22	+23	-.02	+38	+064	

- Individual Performance: BW 78 lbs., 205 Wt. 829 lbs., WWR 106, 365 Wt. 1418 lbs., YWR 113.
- Adjusted Ultrasound Data: %IMF 4.25, REA 15.3, Ratio 112, Rib Fat .56, Rump Fat .68.
- Dam's Production: 3 BWR 97, 3 NR 107, 3 YR 108. She posts 3 @ REA 103.
- His maternal brother was selected from the 2013 sale offering by Paul Farrell, Milbank, SD while his 2011 maternal sister is retained in the herd after posting individual performance that included a BWR 99, WWR 115 and YWR 113.
- Recommended for heifers.

### 38 BA Xception 385

Birth Date: 4-22-2013  
Koupals Xception 413  
Bull 17761124  
#+Whitestone Xception  
Koupals Ellanah 256  
SUA LC 2202 W  
Queen of SAR42  
Tattoo: 385

BA Xception 993  
17003199 BA Canyon Queen 514

BA Navigator 615  
BA Larks Lady 056  
16829787 BA Larks Lady 753

#Baldridge Navigator N5  
Koupals Ebonette 4140  
SUA LC 2202 W  
Traveler Blanche 2323

PRODUCTION EPDs				MATERNAL EPDs		CARCASS				
CED	BW	WW	YW	CEM	MILK	CW	MARB	REA	FAT	
+15	-2.8	+31	+56	+13	+14	+11	+02	+01	+048	

- Individual Performance: BW 58 lbs., BWR 81, 205 Wt. 684 lbs., WWR 88, 365 Wt. 1116 lbs.
- Adjusted Ultrasound Data: %IMF 4.38, REA 12.2, Rib Fat .59, Rump Fat .59.
- Dam's Production: 2 BWR 83, 2 NR 96.
- He shares the #4 CED and posts the #4 BW EPD as well as the #1 \$EN in the sale bull offering. Moreover, he ranks in the breed's elite top 1% for both CED and BW EPDs and in the top 3% for #EN.
- His maternal brother by "Final Answer" was a featured calving-ease bull in the 2013 offering that sold to Randy Labrie, Doland, SD.
- Recommended for heifers.

# Borns Angus Xception 993 Sons

## 39

### BA Xception 387

Birth Date: 4-22-2013  
Koupals Xception 413  
**BA Xception 993**  
17003199 BA Canyon Queen 514

Bull 17761136  
#Whitestone Xception  
Koupals Ellanah 256  
SUA LC 2202 W  
Queen of SAR42  
Tattoo: 387

BA Xception 819  
**BA Focus Traveler 003**  
16829844 BA Larks Lady 8119

Koupals Xception 413  
Ba Focus Blanche 517  
Koupals Juneau 3143  
BA Larks Lady 522

PRODUCTION EPDs				MATERNAL EPDs		CARCASS			
CED	BW	WW	YW	CEM	MILK	CW	MARB	REA	FAT
+12	-1.2	+31	+56	+12	+17	+7	-.13	+23	+045

- Individual Performance: BW 62 lbs., BWR 86, 205 Wt. 707 lbs., WWR 91, 365 Wt. 1117 lbs.
- Adjusted Ultrasound Data: %IMF 3.54, REA 13.9, Ratio 101, Rib Fat .51, Ratio 100, Rump Fat .62.
- Dam's Production: 2 BWR 96, 2 NR 99. Calving Interval 2@330 days. She posts 1 @ REA 101, Rib Fat 100.
- He records the #3 \$EN value in the sale bull offering.
- He ranks in the top 4% for both CED and BW EPDs and in the top 10% for \$EN.
- His 2012 maternal sister is retained.
- Recommended for heifers.

## 41

### BA Xception 3112

Birth Date: 5-5-2013  
Koupals Xception 413  
**BA Xception 993**  
17003199 BA Canyon Queen 514

Bull Reg. No. Pdg.  
#Whitestone Xception  
Koupals Ellanah 256  
SUA LC 2202 W  
Queen of SAR42  
Tattoo: 3112

BA Right ON 610  
**BA Larks Lady 1103**  
17136878 BA Larks Lady 772

LT Right On 4060  
Koupals Tessie 4141  
SUA LC 2202 W  
BA Queen Focus 313

PRODUCTION EPDs				MATERNAL EPDs		CARCASS			
CED	BW	WW	YW	CEM	MILK	CW	MARB	REA	FAT
+11	-.5	+36	+67	+10	+16	+12	-.12	+07	+070
+9	+6	+32	+62	+11	+19	+18	+25	+15	-.022

- Individual Performance: BW 68 lbs., 205 Wt. 746 lbs., WWR 97, 365 Wt. 1220 lbs., YWR 97.
- Adjusted Ultrasound Data: %IMF 3.96, REA 13.9, Rib Fat .44, Ratio 92, Rump Fat .49.
- Dam's Production: 1 NR 97.
- His dam is a first-calf heifer that posted an intriguing individual IMF of 6.08% to ratio 119 in her contemporary group.
- He ranks in the top 15% for CED and BW EPDs among non-parent bulls in the breed.
- Recommended for heifers.

## 40

### BA Xception 3106

Birth Date: 4-30-2013  
Koupals Xception 413  
**BA Xception 993**  
17003199 BA Canyon Queen 514

Bull 17761127  
#Whitestone Xception  
Koupals Ellanah 256  
SUA LC 2202 W  
Queen of SAR42  
Tattoo: 3106

BA In Focus 834  
**BA Tammy 046**  
16829853 BA Tammy 889

#Mytty In Focus  
Koupals Rica 419  
BA Right ON 610  
BA RH Xception 656

PRODUCTION EPDs				MATERNAL EPDs		CARCASS			
CED	BW	WW	YW	CEM	MILK	CW	MARB	REA	FAT
+12	-1.2	+37	+61	+12	+19	+14	+.03	+15	+038

- Individual Performance: BW 60 lbs., BWR 85, 205 Wt. 737 lbs., WWR 96, 365 Wt. 1187 lbs., YWR 94.
- Adjusted Ultrasound Data: %IMF 3.63, REA 14.1, Rib Fat .48, Ratio 100, Rump Fat .48.
- Dam's Production: 2 BWR 83, 2 NR 97.
- His 2012 sister by "Legend" is retained in the Borns Angus herd.
- He ranks in the top 4% for both CED and BW and in the top 10% for \$EN among non-parent bulls in the breed.
- Recommended for heifers.

## 42

### BA Xception 3114

Birth Date: 5-7-2013  
Koupals Xception 413  
**BA Xception 993**  
17003199 BA Canyon Queen 514

Bull Reg. No. Pdg.  
#Whitestone Xception  
Koupals Ellanah 256  
SUA LC 2202 W  
Queen of SAR42  
Tattoo: 3114

BA Right ON 610  
**Queen of BA 1100**  
17136877 Queen of BA 2410

LT Right On 4060  
Koupals Tessie 4141  
SAR Viking 227  
Queen of SAR42

PRODUCTION EPDs				MATERNAL EPDs		CARCASS			
CED	BW	WW	YW	CEM	MILK	CW	MARB	REA	FAT
+11	-.5	+36	+67	+10	+16	+12	-.12	+07	+070
+4	+8	+33	+60	+4	+21	+14	+16	+17	+048

- Individual Performance: BW 58 lbs., BWR 87, 205 Wt. 737 lbs., WWR 96, 365 Wt. 1161 lbs., YWR 92.
- Adjusted Ultrasound Data: %IMF 3.68, REA 13.9, Rib Fat .53, Rump Fat .46, Ratio 98.
- Dam's Production: 1 BWR 87, 1 NR 96.
- He shares the #3 lightest birth weight in the sale bull offering.
- His dam is a first-calf heifer that posted enviable individual performance of WWR 108, YWR 110 and was promptly inducted into the breeding program.
- Recommended for heifers.





# Borns Angus Yearling Bulls



**BA New Design 321 - Lot 43**



**BA Answer 325 - Lot 45**

## 43 BA New Design 321

Birth Date: 3-5-2013 Bull 17717788 Tattoo: 321  
 #E&B 878 New Design 435 #Bon View New Design 878  
**Sua New Design 435 RR 9654** +E&B 598 Lady Bando 251  
**16601896** #Blackbird of RR 4688 Er Emulation J122  
 Blackbird of RR 8535  
 #Larks Canyon 74D4  
 #Spear U Heidi 821  
 SAR Viking 227  
 Miss Emulous of SAR 661

SUA LC 2202 W  
**Miss Emulous of BA 1119**  
**17136893** Miss Emulous of BA 1317

PRODUCTION EPDs				MATERNAL EPDs		CARCASS			
CED	BW	WW	YW	CEM	MILK	CW	MARB	REA	FAT
+7	+1.0	+41	+65	+9	+25	+17	+.35	-.01	+117

- Individual Performance: BW 78 lbs., 205 Wt. 886 lbs., WWR 105, 365 Wt. 1198 lbs., YWR 93.
- Adjusted Ultrasound Data: %IMF 5.01, REA 14.4, Ratio 104, Rib Fat .88, Rump Fat .86.
- Dam's Production: 1 NR 105. She posts 1 @ REA 104.
- He records the #4 heaviest 205 day wt. in the bull sale offering.
- Born unassisted out of a first-calf heifer that demonstrated excellent carcass trait prowess boasting an individual IMF measurement of 5.41 to ratio 114.
- Recommended for heifers.

## 45 BA Answer 325

Birth Date: 3-10-2013 Bull 17730216 Tattoo: 325  
 #Sitz Traveler 8180 #GDAR Traveler 71  
**SAV Final Answer 0035** <sup>RF</sup> Sitz Everelda Entense 1137  
**#13592905** SAV Emulous 8145 #Bon View Bando 598  
 SAV Sky Emulous 2124  
 #OCC Juneau 807J  
 Katinka Advance 133  
 #Mytty In Focus <sup>RF</sup>  
 BA Viking Queen 2412

Koupal Eclipse 771  
**BA Lady Focus 157**  
**17136841** BA Lady Focus 856

PRODUCTION EPDs				MATERNAL EPDs		CARCASS			
CED	BW	WW	YW	CEM	MILK	CW	MARB	REA	FAT
+5	+2.1	+57	+103	+8	+25	+20	+.36	+.44	+.028

- Individual Performance: BW 78 lbs., 205 Wt. 874 lbs., WWR 103, 365 Wt. 1437 lbs., YWR 112.
- Adjusted Ultrasound Data: %IMF 4.80, REA 15.3, Ratio 110, Rib Fat .50, Ratio 93, Rump Fat .37, Ratio 76.
- Dam's Production: 1 NR 103, 1 YR 112. She posts 1 @ REA 110, Rib Fat 93, Rump Fat 76.
- He records the #2 WW and #4 YW EPDs in the bull sale offering.
- His dam is a first-calf heifer that posted individual performance of WWR 110, YWR 110, IMF ratio 104, REA ratio 105.
- The sire, SAV Final Answer 0035, is a Genex high accuracy, calving-ease sire that bends the growth curve to offer exceptional performance and carcass quality.
- Recommended for heifers.

## 44 BA New Design <sup>DDF</sup> 321

Birth Date: 4-13-2013 Bull 17761144 Tattoo: 369  
 #E&B 878 New Design 435 #Bon View New Design 878  
**Sua New Design 435 RR 9654** +E&B 598 Lady Bando 251  
**16601896** #Blackbird of RR 4688 Er Emulation J122  
 Blackbird of RR 8535  
 BA Initiative 811  
**BA Enchantress 190**  
**17136908** BA Enchantress 655  
 BA Initiative 607  
 BA Eileenmere 605  
 #+Whitestone Xception  
 Koupals Enchantress 4200

PRODUCTION EPDs				MATERNAL EPDs		CARCASS			
CED	BW	WW	YW	CEM	MILK	CW	MARB	REA	FAT
+8	+2	+39	+64	+10	+26	+19	+.44	+.16	+.044

- Individual Performance: BW 64 lbs., BWR 94, 205 Wt. 742 lbs., WWR 95, 365 Wt. 1062 lbs., YWR 84.
- Adjusted Ultrasound Data: %IMF 5.77, Ratio 124, REA 11.9, Rib Fat .38, Ratio 75, Rump Fat .44, Ratio 83.
- Dam's Production: 1 BWR 94, 1 NR 95. She posts 1 @ IMF 124, Rib Fat 75, Rump Fat 83.
- He ranks in the top 25% for CED and top 15% for BW EPDs among non-parent bulls in the breed.
- Born unassisted out of a first-calf heifer.
- Recommended for heifers.

## 46 BA Eclipse 3103

Birth Date: 4-29-2013 Bull 17761116 Tattoo: 3103  
 #OCC Juneau 807J #+OCC Emblazon 854E  
**Koupal Eclipse 771** OCC Dixie Erica 903E  
**15824919** Katinka Advance 133 #Rhythm & Blues  
 +Katinka Advance L1  
 SUA Cowboy 419P  
**BA Elenor 9143**  
**16642677** Koupals Ellnora 4214  
 SUA RH Cowboy 1210Z  
 SUA Canyon Merideth 211  
 #OCC Glory 950G  
 Beefland Ellnora 99

PRODUCTION EPDs				MATERNAL EPDs		CARCASS			
CED	BW	WW	YW	CEM	MILK	CW	MARB	REA	FAT
-7	+5.8	+46	+81	-2	+20	+21	+.14	+.39	+.036

- Individual Performance: BW 88 lbs., 205 Wt. 758 lbs., WWR 98, 365 Wt. 1252 lbs., YWR 99.
- Adjusted Ultrasound Data: %IMF 4.73, Ratio 112, REA 13.9, Rib Fat .49, Rump Fat .55.
- Dam's Production: 3 NR 97, 3 YR 101. She posts 3 @ IMF 110, REA 103, Rib Fat 94, Rump Fat 98.
- His maternal brother was selected from the 2013 offering by Dana Sippel, Pierpont, SD while his 2011 maternal sister is working in the Roger Gibbon program at Milnor, ND.

# Borns Angus Yearling Heifers



## BA Miss CC7 336

Lot 49

## 47 BA Miss CC7 302

Birth Date: 2-15-2013 Cow 17717800 Tattoo: 302  
 #SydGen CC&7 #+SAF Connection  
**RBM CC7 Y40** SydGen Forever Lady 4087  
**16984247** ALC Blackbird I04U #Mytty In Focus <sup>RFI</sup>  
 +ALC Blackbird 6707  
 #Larks Canyon 74D4  
 #Spear U Heidi 821  
 SAR Viking 227  
 Queen of SAR42

SUA LC 2202 W  
**Queen of BA 159**  
**17136842** Queen of BA30

PRODUCTION EPDs				MATERNAL EPDs		CARCASS			
CED	BW	WW	YW	CEM	MILK	CW	MARB	REA	FAT
I+12	I-1.1	I+43	I+81	I+11	I+24	I+22	I+.51	I+.04	I+.016

- Individual Performance: BW 69 lbs., Actual Wt. on 11/25/13: 792 lbs., 365 Wt. 918 lbs., YWR 100.
- Dam's Production: 1 YR 100.
- Grandam's Production: 9 BWR 95, 9 NR 95. Calving Interval 9@367 days. She posts 3 @IMF 100, REA 101, Rump Fat 92.
- She shares the #2 YW EPD and posts the #3 \$B in the sale heifer offering.
- She ranks in the top 4% for both CED and BW EPDs among non-parent cows in the breed.
- Her dam is a first-calf heifer.

## 48 BA Cowgirl 327

Birth Date: 3-11-2013 Cow 17735696 Tattoo: 327  
 +Werner War Party 2417 #Connealy Onward  
**CB Block Party 156** <sup>RFI</sup> +BAAR USA Lady Jaye 489  
**17013539** CB 965 Mainline Woodhill Mainline  
 742 CB Yield Grade  
 BA Cowboy 994  
**BA Cowgirl 110** SUA Cowboy 419P  
**17136809** BA Doll 987 Koupals Zara 4163  
 SUA Cowboy 419P  
 Koupals New Pride 4121

PRODUCTION EPDs				MATERNAL EPDs		CARCASS			
CED	BW	WW	YW	CEM	MILK	CW	MARB	REA	FAT
+9	+1.0	+50	+90	+11	+20	I+26	I+.42	I+.48	I+.004

- Individual Performance: BW 62 lbs., BWR 92, 205 Wt. 687 lbs., WWR 89, 365 Wt. 1055 lbs., YWR 92.
- Dam's Production: 1 BWR 92, 1 NR 89.
- Grandam's Production: 3 BWR 89, 3 NR 89. She posts 3 @IMF 106, Rib Fat 92, Rump Fat 93.
- She shares the #1 WW EPD and posts the #1 YW EPD as well as the #2 \$B value in the sale heifer offering.
- She ranks in the top 20% for CED among non-parent cows in the breed. Her dam is a first-calf heifer.
- Her sire, CB Plock Party, topped the 2012 CB Farms Sale in KS at \$13,000 to Baldrige Bros., AJC Angus and Woodhill Farms. With the first data coming in, he has enhanced his growth EPDs into the top 1% for both WW and YW. Block Party's \$B has gone from +84 to +105.

## 49 BA Miss CC7 336

Birth Date: 3-17-2013 Cow 17717805 Tattoo: 336  
 #SydGen CC&7 #+SAF Connection  
**RBM CC7 Y40** SydGen Forever Lady 4087  
**16984247** ALC Blackbird I04U #Mytty In Focus <sup>RFI</sup>  
 +ALC Blackbird 6707  
 BA Right ON 610  
**BA Larks Queen 166** LT Right On 4060  
**17136851** BA Larks Queen 674 Koupals Tessie 4141  
 SUA LC 2202 W  
 BA Luthien Queen 50

PRODUCTION EPDs				MATERNAL EPDs		CARCASS			
CED	BW	WW	YW	CEM	MILK	CW	MARB	REA	FAT
+13	-1.3	+34	+70	+10	+28	I+19	I+.63	I-.08	I+.016

- Individual Performance: BW 65 lbs., BWR 96, 205 Wt. 707 lbs., WWR 91, 365 Wt. 1064 lbs., YWR 92.
- Dam's Production: 1 BWR 96, 1 NR 91.
- Grandam's Production: 3 NR 104. She posts 1 @IMF 111.
- She shares the #3 CED and the #1 Milk EPDs as well as the #4 \$B value in the sale heifer offering. In addition, she scanned the highest adj. IMF%.
- She ranks in the top 3% for both CED and BW EPDs among non-parent cows in the breed.
- Her dam is a first-calf heifer.



CB Block Party 156 - Sire of Lot 48.

# 50 BA Ebony 346

Birth Date: 4-1-2013  
 #SydGen CC&7  
**RBM CC7 Y40**  
 16984247 ALC Blackbird 104U

Cow 17761139  
 #+SAF Connection  
 SydGen Forever Lady 4087  
 #Mytty In Focus (RF)  
 +ALC Blackbird 6707

Tattoo: 346

BA Navigator 815  
**BA Ebony 1124**  
 17136897 BA Ebony 988

BA Navigator 615  
 #BA Enchantress 631  
 SUA LC 2202 W  
 Koupals Ebonette 4140

PRODUCTION EPDs				MATERNAL EPDs		CARCASS			
CED	BW	WW	YW	CEM	MILK	CW	MARB	REA	FAT
+16	-2.8	+35	+78	+13	+25	1+26	1+.44	1+.27	1-.009

- Individual Performance: BW 62 lbs., BWR 92, 205 Wt. 685 lbs., WWR 88, 365 Wt. 1082 lbs., YWR 94.
- Dam's Production: 1 BWR 92, 1 NR 88.
- Grandam's Production: 1 BWR 88, 1 NR 87. She posts 1 @IMF 112.
- She records the #1 CED, #1 lowest BW and the #3 Milk EPDs as well as the #1 \$B value in the sale heifer offering.
- Her dam is a first-calf heifer.
- She ranks in the top 1% for both CED and BW among non-parent cows in the breed.

# 53 BA Lady Design 362

Birth Date: 4-13-2013  
 #E&B 878 New Design 435  
**Sua New Design 435 RR 9654**  
 16601896 #Blackbird of RR 4688

Cow 17717828  
 #Bon View New Design 878  
 +E&B 598 Lady Bando 251  
 Er Emulation J122  
 Blackbird of RR 8535

Tattoo: 362

BA Juneau 7142  
**BA Larks Lady 0149**  
 16829838 BA Larks Lady 772

Koupals Juneau 3143  
 BA Rito Lady 303  
 SUA LC 2202 W  
 BA Queen Focus 313

PRODUCTION EPDs				MATERNAL EPDs		CARCASS			
CED	BW	WW	YW	CEM	MILK	CW	MARB	REA	FAT
+14	-3.0	+25	+56	+15	+23	1+0	1+.25	1+.01	1+.033

- Individual Performance: BW 48 lbs., BWR 71, 205 Wt. 554 lbs., WWR 78, 365 Wt. 901 lbs., YWR 83.
- Dam's Production: 2 BWR 81, 2 NR 89. Calving Interval 2@329 days.
- Grandam's Production: 4 BWR 92, 4 NR 93. Calving Interval 4@370 days. She posts 1 @IMF 119, Rib Fat 68, Rump Fat 59.
- She recorded the #2 CED and shares the #1 BW EPD in the sale heifer offering.
- She ranks in the top 1% for both CED and BW EPDs among non-parent cows in the breed.

# 51 BA Lady Navigator 358

Birth Date: 4-10-2013  
 BA Navigator 615  
**BA Navigator 815**  
 16284876 #BA Enchantress 631

Cow 17717825  
 #Baldridge Navigator N5  
 Koupals Ebonette 4140  
 #+Whitestone Xception  
 Koupals Enchantress 4114

Tattoo: 358

SUA LC 2202 W  
**BA Viking Lady 9138**  
 #16642663 BA Viking Queen 2412

#Larks Canyon 74D4  
 #Spear U Heidi 821  
 SAR Viking 227  
 SAR Viking Queen 302

PRODUCTION EPDs				MATERNAL EPDs		CARCASS			
CED	BW	WW	YW	CEM	MILK	CW	MARB	REA	FAT
+9	+4	+32	+52	+8	+21	1+18	1+.03	1+.13	1+.001

- Individual Performance: BW 72 lbs., BWR 97, 205 Wt. 702 lbs., WWR 90, 365 Wt. 1052 lbs., YWR 84.
- Dam's Production: 3 NR 105. She posts 2 @REA 102.
- Grandam's Production: 8 NR 102. She posts 3 @IMF 117, Rib Fat 95, Rump Fat 90.
- Her Pathfinder Dam produced the popular "Eclipse" daughter selected by Lester Hurlbut & Sons, Raymond, SD.
- Her full sister in the herd, weaned her first calf with a 115 nursing ratio and a 108 yearling ratio.
- She ranks in the top 20% for both CED and BW and in the top 15% for \$EN.

# 54 BA Lady Navigator 367

Birth Date: 4-13-2013  
 BA Navigator 615  
**BA Navigator 815**  
 16284876 #BA Enchantress 631

Cow 17717832  
 #Baldridge Navigator N5  
 Koupals Ebonette 4140  
 #+Whitestone Xception  
 Koupals Enchantress 4114

Tattoo: 367

BA Canyon 515  
**BA Sara 962**  
 16642631 Focus Lady of BA 529

SUA LC 2202 W  
 Queen of SAR 392  
 Koupals B&B Focus 1011  
 BA Luthien Queen 50

PRODUCTION EPDs				MATERNAL EPDs		CARCASS			
CED	BW	WW	YW	CEM	MILK	CW	MARB	REA	FAT
-3	+4.9	+40	+74	+0	+21	1+21	1+.04	1+.26	1+.009

- Individual Performance: BW 92 lbs., 205 Wt. 722 lbs., WWR 101, 365 Wt. 1119 lbs., YWR 103.
- Dam's Production: 2 NR 110, 1 YR 103. Calving Interval 3@351 days.
- Grandam's Production: 2 NR 111.
- Her full brother recorded an 800 lb. 205 day wt. and posted a 119 WWR.
- Maternal grandsire, BA Canyon 515, earned pasture service duties at Borns Angus after posting a WWR 120 and an IMF ratio 118. His dam, Queen of SAR 392, is now deceased but had amassed a life-time progeny record of 7 NR 113, 2 YWR 105 and 2 IMF 109.

# 52 BA Lady Navigator 360

Birth Date: 4-12-2013  
 BA Navigator 615  
**BA Navigator 815**  
 16284876 #BA Enchantress 631

Cow 17717827  
 #Baldridge Navigator N5  
 Koupals Ebonette 4140  
 #+Whitestone Xception  
 Koupals Enchantress 4114

Tattoo: 360

Koupal Eclipse 771  
**BA Pride 050**  
 16829814 Larks Queen of BA 410

#OCC Juneau 807J  
 Katinka Advance 133  
 SUA LC 2202 W  
 Queen of BA 2410

PRODUCTION EPDs				MATERNAL EPDs		CARCASS			
CED	BW	WW	YW	CEM	MILK	CW	MARB	REA	FAT
+7	+5	+40	+74	+6	+21	1+17	1-.01	1+.08	1+.009

- Individual Performance: BW 66 lbs., BWR 97, 205 Wt. 719 lbs., WWR 101, 365 Wt. 1085 lbs., YWR 100.
- Dam's Production: 2 NR 104, 1 YR 100. Calving Interval 2@328 days.
- Grandam's Production: 5 NR 102, 1 YR 103. Calving Interval 5@374 days.
- A low birth weight heifer with admirable pre-weaning performance.
- Her sire, Navigator, is a home-raised calving-ease sire that has been used with much success within the breeding program. He recorded astonishing individual performance that included a 58 lb. BW, BWR 89, 205 day wt. 818 lbs. and WWR 114.



# 55 BA Lady Navigator 368

Birth Date: 4-13-2013 Cow 17717833 Tattoo: 368  
 BA Navigator 815 #Baldridge Navigator N5  
 16284876 #BA Enchantress 631 Koupals Ebonette 4140  
 #Whitestone Xception Koupals Enchantress 4114

BA Right ON 610 LT Right On 4060  
 BA Magie 912 Koupals Tessie 4141  
 16642646 BA Xception Lady 714 Koupals Xception 413  
 Koupals Bernice 4110

PRODUCTION EPDs				MATERNAL EPDs			CARCASS			
CED	BW	WW	YW	CEM	MILK	CW	MARB	REA	FAT	
+5	+1.6	+32	+48	+7	+22	I+3	I+.16	I+.20	I-.010	

- Individual Performance: BW 88 lbs., 205 Wt. 715 lbs., WWR 100, 365 Wt. 872 lbs., YWR 80.
- Dam's Production: 3 BWR 100, 3 NR 97. Calving Interval 3@354 days. She posts 2 @ REA 101, Rib Fat 96, Rump Fat 77.
- Grandam's Production: 2 BWR 91, 2 NR 98.
- Her maternal sister by "Legend" is retained at Borns Angus.
- She ranks in the top 25% for \$EN among non-parent cows in the breed.

# 57 BA Lady Xception 376

Birth Date: 4-16-2013 Cow 17717839 Tattoo: 376  
 BA Xception 993 #Whitestone Xception  
 17003199 BA Canyon Queen 514 Koupals Ellanah 256  
 SUA LC 2202 W Queen of SAR42

BA Juneau 746 Koupals Juneau 3143  
 BA Rita 918 SUA 5050 Effie 3274  
 16642643 BA Larks Lady 703 Koupals Xception 413  
 Focus Lady of BA 511

PRODUCTION EPDs				MATERNAL EPDs			CARCASS			
CED	BW	WW	YW	CEM	MILK	CW	MARB	REA	FAT	
+10	+0	+39	+71	+10	+18	I+14	I+.01	I+.13	I+.056	

- Individual Performance: BW 70 lbs., BWR 99, 205 Wt. 684 lbs., WWR 96, 365 Wt. 1065 lbs., YWR 98.
- Dam's Production: 3 NR 102, 3 YR 101. She posts 2 @ REA 101.
- Grandam's Production: 5 BWR 98, 5 NR 101, 1 YR 102. Calving Interval 5@361 days. She posts 1 @ IMF 115, Rib Fat 89.
- Her 2012 maternal brother was selected from the 2013 offering by Jason Toben, Clear Lake, SD while her 2011 brother sold to Benson Farm, Clark, SD.
- She ranks in the top 15% for CED, BW and \$EN among non-parent cows in the breed.

# 56 BA Lady Navigator 371

Birth Date: 4-14-2013 Cow 17717834 Tattoo: 371  
 BA Navigator 815 #Baldridge Navigator N5  
 16284876 #BA Enchantress 631 Koupals Ebonette 4140  
 #Whitestone Xception Koupals Enchantress 4114

BA Navigator 815 BA Navigator 615  
 BA Xception Lady 005 #BA Enchantress 631  
 16829839 BA Xception Lady 882 Koupals Xception 413  
 Koupals Erica 4176

PRODUCTION EPDs				MATERNAL EPDs			CARCASS			
CED	BW	WW	YW	CEM	MILK	CW	MARB	REA	FAT	
+11	-.7	+30	+66	+9	+19	I+13	I+.03	I+.17	I-.010	

- Individual Performance: BW 72 lbs., 205 Wt. 630 lbs., WWR 88, 365 Wt. 1033 lbs., YWR 95.
- Dam's Production: 2 NR 91. Calving Interval 2@326 days.
- Grandam's Production: 1 BWR 98, 1 NR 95. She posts 1 @ IMF 121.
- Her 2012 full sister is retained in the herd.
- She ranks in the top 10% for both CED and BW among non-parent cows in the breed.

# 58 BA Blackbird 381

Birth Date: 4-18-2013 Cow 17782431 Tattoo: 381  
 BA Xception 993 #Whitestone Xception  
 17003199 BA Canyon Queen 514 Koupals Ellanah 256  
 SUA LC 2202 W Queen of SAR42

BA Navigator 815 BA Navigator 615  
 BA Blackbird 017 #BA Enchantress 631  
 16829848 BA Blackbird 8133 Koupals Xception 413  
 BA Blackbird 20

PRODUCTION EPDs				MATERNAL EPDs			CARCASS			
CED	BW	WW	YW	CEM	MILK	CW	MARB	REA	FAT	
+9	-.1	+36	+70	+9	+17	I+9	I-.01	I+.03	I+.057	

- Individual Performance: BW 72 lbs., 205 Wt. 688 lbs., WWR 97, 365 Wt. 1098 lbs., YWR 101.
- Dam's Production: 2 BWR 98, 2 NR 98, 1 YR 101. Calving Interval 2@309 days.
- Grandam's Production: 4 BWR 99, 4 NR 103, 2 YR 100. Calving Interval 4@357 days. She posts 1 @ IMF 100, REA 100, Rib Fat 100, Rump Fat 100.
- She posts the #3 \$EN value in the sale heifer offering.
- Ranks in the top 20% for CED EPD, top 15% for BW EPD and top 10% for \$EN value among non-parent cows in the breed.



**BA Lady Navigator 371 - Lot 56**

# 59 BA Viking Queen 388

Birth Date: 4-23-2013 Cow 17761128 Tattoo: 388  
 BA Xception 993 #Whitestone Xception  
 17003199 BA Canyon Queen 514 Koupals Ellanah 256  
 SUA LC 2202 W Queen of SAR42

BA Right ON 610 LT Right On 4060  
 BA Viking Queen 0172 Koupals Tessie 4141  
 16829796 BA Viking Queen 1412 SAR Viking 227  
 SAR Viking Queen 302

PRODUCTION EPDs				MATERNAL EPDs			CARCASS			
CED	BW	WW	YW	CEM	MILK	CW	MARB	REA	FAT	
+7	+.3	+32	+65	+7	+22	I+18	I+.06	I+.14	I+.042	

- Individual Performance: BW 68 lbs., BWR 99, 205 Wt. 699 lbs., WWR 98, 365 Wt. 1131 lbs., YWR 104.
- Dam's Production: 2 BWR 90, 2 NR 109, 2 YR 109. She posts 1 @ REA 118.
- Grandam's Production: 8 NR 105, 4 YR 104. Calving Interval 9@371 days. She posts 3 @ REA 101, Rib Fat 91, Rump Fat 98.
- Her 2012 maternal sister by SAV Final Answer 0035 is retained in the Borns breeding program after first posting a BWR 81, WWR 119 and YWR 114.
- She ranks in the top 20% for BW EPD and the top 15% for \$EN value among non-parent cows in the breed.

# 60 BA Larks Lady 392

Birth Date: 4-25-2013  
 Cow 17761134  
 #Whitstone Xception  
 Koupals Eilanah 256  
 SUA LC 2202 W  
 Queen of SAR42  
 Tattoo: 392

Birth Date: 4-25-2013  
 Koupals Xception 413  
**BA Xception 993**  
 17003199 BA Canyon Queen 514

SUA LC 2202 W  
**BA Larks Lady 029**  
 16829752 Koupals Ebonette 4185

#Larks Canyon 74D4  
 #Spear U Heidi 821  
 #VDAR Legend 1281  
 Koupals Ebonette 0138

PRODUCTION EPDs				MATERNAL EPDs		CARCASS			
CED	BW	WW	YW	CEM	MILK	CW	MARB	REA	FAT
+4	+3.2	+39	+73	+8	+14	I+15	I+0	I-.07	I+.052

- Individual Performance: BW 72 lbs., 205 Wt. 692 lbs., WWR 98, 365 Wt. 1089 lbs., YWR 102.
- Dam's Production: 2 BWR 97, 2 NR 96, 2 YR 100. She posts 1 @ IMF 155.
- Grandam's Production: 3 NR 100, 2 YR 101.
- She recorded the #1 \$EN value in the sale heifer offering and currently ranks in the breed's top 10% for this important economic trait.
- Her 2012 maternal sister is retained in the Borns Angus breeding program.

# 63 BA Rachel 3101

Birth Date: 4-29-2013  
 Cow 17761108  
 SUA RH Cowboy 1210Z  
 SUA Canyon Merideth 211  
 +Bluegrass New Design 203  
 Koupals Zara 2298  
 Tattoo: 3101

Birth Date: 4-29-2013  
 SUA Cowboy 419P  
**BA Cowboy 994**  
 16642672 Koupals Zara 4163

BA Right ON 610  
**BA Rachel 905**  
 16642651 BA Larks Lady 762

LT Right On 4060  
 Koupals Tessie 4141  
 SUA LC 2202 W  
 BA Blackbird 2331

PRODUCTION EPDs				MATERNAL EPDs		CARCASS			
CED	BW	WW	YW	CEM	MILK	CW	MARB	REA	FAT
+11	+6	+38	+70	+12	+18	I+22	I+.13	I+.18	I+.012

- Individual Performance: BW 62 lbs., BWR 89, 205 Wt. 689 lbs., WWR 98, 365 Wt. 1084 lbs., YWR 102.
- Dam's Production: 3 BWR 91, 3 NR 98, 3 YR 101. Calving Interval 3@375 days. She posts 2 @ REA 100.
- Grandam's Production: 4 BWR 98, 4 NR 94.
- She recorded the #4 \$EN value in the sale heifer offering.
- Her maternal brother was one of the most popular "picture bulls" of the 2013 offering that was selected by Romald Behne, Bernard, IA.
- She ranks in the top 10% for CED and top 15% for \$EN among non-parent females.

# 61 BA Larks Lady 398

Birth Date: 4-24-2013  
 Cow 17761125  
 #OCC Emblazon 854E  
 OCC Dixie Erica 903E  
 #Rhythm & Blues  
 +Katinka Advance L1  
 Tattoo: 390

Birth Date: 4-24-2013  
 #OCC Juneau 807J  
**Koupal Eclipse 771**  
 15824919 Katinka Advance 133

BA Navigator 615  
**BA Larks Lady 049**  
 16829785 BA Larks Lady 755

#Baldridge Navigator N5  
 Koupals Ebonette 4140  
 SUA LC 2202 W  
 BA Focus Lady 309

PRODUCTION EPDs				MATERNAL EPDs		CARCASS			
CED	BW	WW	YW	CEM	MILK	CW	MARB	REA	FAT
+8	-.8	+38	+66	+8	+20	I+9	I-.04	I+.29	I+.026

- Individual Performance: BW 58 lbs., BWR 85, 205 Wt. 635 lbs., WWR 89, 365 Wt. 969 lbs., YWR 89.
- Dam's Production: 2 BWR 83, 2 NR 98. She posts 1 @ IMF 105, REA 110, Rib Fat 78, Rump Fat 74.
- Grandam's Production: 4 NR 96. Calving Interval 4@361 days.
- Her maternal brother was the lowest birth weight bull in the 2013 offering and sold as a feature that was selected by Tim Des Lauriers, Doland, SD.
- She ranks in the top 25% for CED EPD, top 5% for BW EPD and top 20% for \$EN among non-parent cows in the breed.

# 64 BA Larks Lady 3102

Birth Date: 4-29-2013  
 Cow 17761123  
 #SAF Focus of ER  
 Mytty Countess 906  
 SUA LC 2202 W  
 BA Black Focus 308  
 Tattoo: 3102

Birth Date: 4-29-2013  
 #Mitty In Focus 909  
**BA In Focus 847**  
 16286713 BA Black Canyon 528

BA Right ON 610  
**BA Larks Lady 0161**  
 16829811 BA Blackbird 685

LT Right On 4060  
 Koupals Tessie 4141  
 SUA LC 2202 W  
 BA Blackbird 2331

PRODUCTION EPDs				MATERNAL EPDs		CARCASS			
CED	BW	WW	YW	CEM	MILK	CW	MARB	REA	FAT
+8	+4	+45	+72	+9	+19	I+11	I+.28	I+.05	I+.049

- Individual Performance: BW 62 lbs., BWR 92, 205 Wt. 781 lbs., WWR 111, 365 Wt. 1091 lbs., YWR 102.
- Dam's Production: 2 BWR 99, 2 NR 100, 1 YR 102.
- Grandam's Production: 4 BWR 93, 4 NR 97. She posts 1 @ REA 103, Rib Fat 97.
- She recorded the #5 WW and #3 \$W EPDs in the sale heifer offering.
- Excellent individual performance and an astonishing IMF measurement make her a "must see" on sale day.

# 62 BA Pride 395

Birth Date: 4-27-2013  
 Cow 17761133  
 #+OCC Emblazon 854E  
 OCC Dixie Erica 903E  
 #Rhythm & Blues  
 +Katinka Advance L1  
 Tattoo: 395

Birth Date: 4-27-2013  
 #OCC Juneau 807J  
**Koupal Eclipse 771**  
 15824919 Katinka Advance 133

BA Navigator 615  
**BA Pride 068**  
 16829771 Koupals New Pride 4121

#Baldridge Navigator N5  
 Koupals Ebonette 4140  
 Baldridge Leon L92  
 Beefland New Pride 9159

PRODUCTION EPDs				MATERNAL EPDs		CARCASS			
CED	BW	WW	YW	CEM	MILK	CW	MARB	REA	FAT
+3	+8	+44	+79	+5	+21	I+13	I-.14	I+.17	I+.018

- Individual Performance: BW 68 lbs., 205 Wt. 710 lbs., WWR 101, 365 Wt. 1115 lbs., YWR 105.
- Dam's Production: 2 NR 103, 1 YR 105. Calving Interval 2@327 days.
- Grandam's Production: 4 BWR 92, 4 NR 99, 1 YR 104.
- She recorded the #5 \$W value in the sale heifer offering.
- Her 2012 maternal sister is retained in the Borns Angus breeding program.



# Borns Angus Yearling Heifers

## BA Cowboy 3108

Lot 66



## 65 BA Zara 3105

Birth Date: 4-30-2013 Cow 17761132 Tattoo: 3105  
 SUA Cowboy 419P SUA RH Cowboy 1210Z  
**BA Cowboy 994** SUA Canyon Merideth 211  
**16642672** Koupals Zara 4163 +Bluegrass New Design 203  
 Koupals Zara 2298  
 BA Navigator 615 #Baldridge Navigator N5  
**BA Zara** Koupals Ebonette 4140  
**16829773** B&B Zara 4045 #+GAR Grid Maker  
 #Beefland Zara 402

PRODUCTION EPDs				MATERNAL EPDs		CARCASS			
CED	BW	WW	YW	CEM	MILK	CW	MARB	REA	FAT
+9	+1.1	+45	+72	+10	+17	I+7	I-.13	I+.27	I-.015

- Individual Performance: BW 68 lbs., 205 Wt. 740 lbs., WWR 105, 365 Wt. 993 lbs., YWR 93.
- Dam's Production: 2 BWR 94, 2 NR 98. Calving Interval 2@357 days.
- Grandam's Production: 4 NR 104, 2 YR 105.
- She recorded the #4 WW EPD in the sale heifer offering.
- She ranks in the top 20% for both CED and \$EN among non-parent cows.
- Maternal great-grand sire, GAR Grid Maker, is a Pathfinder, Select Sires bull that is the highest accuracy, most accomplished son of the legendary GAR Precision 2536. Grid Maker is high growth and tremendous on carcass traits as well as genetic defect free.

## 66 BA Cowboy 3108

Birth Date: 4-30-2013 Cow 17761114 Tattoo: 3108  
 SUA Cowboy 419P SUA RH Cowboy 1210Z  
**BA Cowboy 994** SUA Canyon Merideth 211  
**16642672** Koupals Zara 4163 +Bluegrass New Design 203  
 Koupals Zara 2298  
 Koupals Xception 413 #+Whitstone Xception  
**BA Jess 986** Koupals Ellanah 256  
**16642667** Focus Queen BA 338 Koupals B&B Focus 1011  
 Queen of BA30

PRODUCTION EPDs				MATERNAL EPDs		CARCASS			
CED	BW	WW	YW	CEM	MILK	CW	MARB	REA	FAT
+13	-.1	+35	+64	+13	+19	I+9	I+.08	I+.29	I-.003

- Individual Performance: BW 56 lbs., BWR 81, 205 Wt. 646 lbs., WWR 92, 365 Wt. 953 lbs., YWR 89.
- Dam's Production: 3 BWR 88, 3 NR 105. She posts 1 @REA 101, Rib Fat 91, Rump Fat 63.
- Grandam's Production: 5 BWR 96, 5 NR 95. Calving Interval 6@366 days. She posts 1 @IMF 105, Rib Fat 92, Rump Fat 86.
- She shares the #3 CED value in the sale heifer offering.
- She ranks in the top 2% for CED and the top 15% for BW EPDs as well as the top 15% for #EN value among non-parent cows in the breed.
- Her maternal sister was selected from the 2013 sale by Samuel Watt, Estelline, SD while a maternal brother is working in the Dana Sippel breeding program, Pierpont, SD.

## 67 BA Legend 3111

Birth Date: 5-4-2013 Cow 17761143 Tattoo: 3111  
 OCC Legend 616L #+OCC Emblazon 854E  
**Sua Legend U8404** OCC Blackbird 632J  
**+16567512** SUA 616 Supreme 111Z #Rito 616 of 4B20 6807  
 SUA 5N10 Supreme 9100  
 Koupal Eclipse 771 #OCC Juneau 807J  
**BA Cowgirl 1166** Katinka Advance 133  
**17136911** #BA Cowgirl 638 SUA Cowboy 419P  
 Focus of Blackbird 418

PRODUCTION EPDs				MATERNAL EPDs		CARCASS			
CED	BW	WW	YW	CEM	MILK	CW	MARB	REA	FAT
+3	+2.6	+49	+84	+2	+16	I+15	I+.09	I+.32	I+.003

- Individual Performance: BW 70 lbs., 205 Wt. 765 lbs., WWR 109, 365 Wt. 1112 lbs., YWR 104.
- Dam's Production: 1 NR 109, 1 YR 104.
- Grandam's Production: 6 BWR 98, 6 NR 103. Calving Interval 6@366 days.
- She shares the #1 WW and the #4 YW EPDs in the sale heifer offering.
- She records a \$EN among the top 20% of non-parent cows in the breed.
- This high performance female stems from a first-calf heifer back to a Pathfinder grandam.

## 68 BA Larks Queen 3113

Birth Date: 5-7-2013 Cow Reg.No.Pdg. Tattoo: 3113  
 #E&B 878 New Design 435 #Bon View New Design 878  
**Sua New Design 435 RR 9654** +E&B 598 Lady Bando 251  
**16601896** #Blackbird of RR 4688 Er Emulation J122  
 Blackbird of RR 8535  
 BA Right ON 610 LT Right On 4060  
**BA Larks Queen 191** Koupals Tessie 4141  
**17136869** BA Larks Queen 692 SUA LC 2202 W  
 BA Phantom Lady 40

PRODUCTION EPDs				MATERNAL EPDs		CARCASS			
CED	BW	WW	YW	CEM	MILK	CW	MARB	REA	FAT
+13	-2.9	+37	+76	+14	+37	+30	+65	+24	+098
+9	-.2	+34	+59	+9	+20	+16	+14	+09	+020

- Individual Performance: BW 50 lbs., BWR 81, 205 Wt. 716 lbs., WWR 102, 365 Wt. 1054 lbs., YWR 98.
- Dam's Production: 1 BWR 81, 1 NR 101.
- Grandam's Production: 4 BWR 100, 5 NR 91. She posts 2 @REA 101, Rump Fat 96.
- This carcass trait prospect posted the #2 highest adj. IMF at 8.24% of the sale heifer offering.
- Her dam is a first-calf heifer.



**BA Katie 3115 - Lot 69**

**69** **BA Katie 3115**

Birth Date: 5-7-2013 Cow 17761115 Tattoo: 3115  
 SUA Cowboy 419P  
**BA Cowboy 994**  
 16642672 Koupals Zara 4163

BA Canyon 515  
**BA Katie 950**  
 16642674 Koupals Erica 4176

SUA RH Cowboy 1210Z  
 SUA Canyon Merideth 211  
 +Bluegrass New Design 203  
 Koupals Zara 2298

SUA LC 2202 W  
 Queen of SAR 392  
 Whitestone Traveler M021  
 Larkota Eisa Erica

PRODUCTION EPDs				MATERNAL EPDs		CARCASS			
CED	BW	WW	YW	CEM	MILK	CW	MARB	REA	FAT
+4	+4.1	+42	+77	+7	+17	I+22	I+.38	I+.19	I+.023

- Individual Performance: BW 74 lbs., 205 Wt. 718 lbs., WWR 102, 365 Wt. 1100 lbs., YWR 103.
- Dam's Production: 3 NR 107, 3 YR 107. She posts 2 @IMF 121, REA 105.
- Grandam's Production: 4 BWR 90, 4 NR 98.
- Her 2011 full sister is retained in the herd while her maternal brother was a high performing, good scanning feature of the 2013 sale offering selected by Toben Farms, Clear Lake, SD.
- She ranks in the top 15% for \$EN among non-parent females in the breed.

**70** **BA Twilight 3122** [NHR]

Birth Date: 5-17-2013 Cow 17761109 Tattoo: 3122  
 Koupals Xception 413  
**BA Xception 993**  
 17003199 BA Canyon Queen 514

BA Direction 712  
**BA Twilight 901**  
 16642655 BA Canyon Lady 790

#+Whitestone Xception  
 Koupals Ellanah 256  
 SUA LC 2202 W  
 Queen of SAR42

#Morgans Direction 111 9901 [DF]  
 Ba Focus Blanche 517  
 BA Canyon 515  
 Koupals Elba 4219

PRODUCTION EPDs				MATERNAL EPDs		CARCASS			
CED	BW	WW	YW	CEM	MILK	CW	MARB	REA	FAT
+9	-1	+40	+70	+8	+18	I+14	I+.01	I+.18	I+.037

- Individual Performance: BW 60 lbs., BWR 91, 205 Wt. 650 lbs., WWR 102, 365 Wt. 1008 lbs., YWR 100.
- Dam's Production: 3 BWR 99, 3 NR 101, 3 YR 102.
- Grandam's Production: 4 BWR 99, 4 NR 96. Calving Interval 5@374 days.
- She recorded the #4 \$W value in the sale heifer offering.
- Her 2012 maternal sister has been retained in the Borns Angus herd.
- She ranks in the top 20% for CED and in the top 15% for both BW and \$EN among non-parent cows in the breed.

**71** **BA Xception Lady 3125**

Birth Date: 5-23-2013 Cow 17767719 Tattoo: 3125  
 #E&B 878 New Design 435 #Bon View New Design 878  
 Sua New Design 435 RR 9654 +E&B 598 Lady Bando 251  
 16601896 #Blackbird of RR 4688 Er Emulation J122  
 Blackbird of RR 8535

BA Initiative 811  
**BA Xception Lady 174**  
 17136858 BA Xception Lady 855

BA Initiative 607  
 BA Eileenmere 605  
 Koupals Xception 413  
 Koupals Queenie 4205

PRODUCTION EPDs				MATERNAL EPDs		CARCASS			
CED	BW	WW	YW	CEM	MILK	CW	MARB	REA	FAT
+12	-2.1	+43	+80	+13	+28	I+26	I+.45	I+.18	I+.072

- Individual Performance: BW 50 lbs., BWR 85, 205 Wt. 652 lbs., WWR 103.
- Dam's Production: 1 BWR 85, 1 NR 102.
- Grandam's Production: 2 BWR 91, 2 NR 98, 2 YR 103. Calving Interval 2@332 days. She posts 1 @IMF 118.
- She recorded the #3 lowest BW EPD and shares the #1 Milk EPD as well as posting the #2 \$W value in the sale heifer offering.
- She ranks in the top 4% for CED EPD, top 1% for BW EPD and the top 25% for \$W among non-parent cows in the breed.
- Her dam is a first-calf heifer that earned her entrance into the Borns Angus breeding program with individual performance highlighted by a BWR 90, WWR 104, YWR 101 and IMF ratio 118.

**72** **BA 5050 Effie 3126**

Birth Date: 5-24-2013 Cow 17770603 Tattoo: 3126  
 #Mytty In Focus [DF] #SAF Focus of ER  
**BA In Focus 847** Mytty Countess 906  
 16286713 BA Black Canyon 528 SUA LC 2202 W  
 BA Black Focus 308

BA Xception 819  
**BA 5050 Effie 0150**  
 16829843 BA 5050 Effie 872

Koupals Xception 413  
 Ba Focus Blanche 517  
 SUA LC 2202 W  
 SUA 5050 Effie 3274

PRODUCTION EPDs				MATERNAL EPDs		CARCASS			
CED	BW	WW	YW	CEM	MILK	CW	MARB	REA	FAT
+6	+2.2	+44	+78	+8	+19	N/A	N/A	N/A	N/A

- Individual Performance: BW 70 lbs., 205 Wt. 625 lbs., WWR 98.
- Dam's Production: 2 NR 104. Calving Interval 2@341 days.
- Grandam's Production: 2 BWR 97, 2 NR 103, 2 YR 102. Calving Interval 2@330 days. She posts 1 @IMF 109, Rib Fat 86, Rump Fat 85.
- Worth noting! Check out the calving interval of her dam and grandam. If you value fertility and rebreeding performance, you're going to want this heifer.
- Her maternal brother combined a BWR 96 with a WWR 109.
- She ranks in the top 25% for \$EN among non-parent cows in the breed.

**73** **BA Larks Lady 3128** [DF]

Birth Date: 5-26-2013 Cow 17761141 Tattoo: 3128  
 Koupals Xception 413 #+Whitestone Xception  
**BA Xception 993** Koupals Ellanah 256  
 17003199 BA Canyon Queen 514 SUA LC 2202 W  
 Queen of SAR42

BA Juneau 746  
**BA Larks Lady 1134**  
 17136904 BA Larks Lady 753

Koupals Juneau 3143  
 SUA 5050 Effie 3274  
 SUA LC 2202 W  
 Traveler Blanche 2323

PRODUCTION EPDs				MATERNAL EPDs		CARCASS			
CED	BW	WW	YW	CEM	MILK	CW	MARB	REA	FAT
+9	+0	+39	+70	+10	+16	I+9	I+.13	I+.15	I+.046

- Individual Performance: BW 62 lbs., 205 Wt. 656 lbs., WWR 103.
- Dam's Production: 1 NR 103.
- Grandam's Production: 4 BWR 92, 4 NR 88. Calving Interval 4@358 days. She posts 1 @IMF 123, Rump Fat 96.
- She records the #2 \$EN value in the sale heifer offering.
- Ranks in the top 20% for CED EPD, top 15% for BW EPD and top 10% for \$EN value among non-parent cows in the breed.
- Her dam is a first-calf heifer that bested her contemporaries on ultrasound day by posting a 123 IMF ratio.

# 75 BA Blackbird 3129

Birth Date: 5-26-2013  
 BA Navigator 615  
**BA Navigator 815**  
 16284876 #BA Enchantress 631

Cow 17761103  
 #Baldrige Navigator N5  
 Koupals Ebonette 4140  
 #+Whitestone Xception  
 Koupals Enchantress 4114

Tattoo: 3129

BA Navigator 615  
**BA Blackbird 9114**  
 16642640 BA Blackbird 685

#Baldrige Navigator N5  
 Koupals Ebonette 4140  
 SUA LC 2202 W  
 BA Blackbird 2331

PRODUCTION EPDs				MATERNAL EPDs		CARCASS			
CED	BW	WW	YW	CEM	MILK	CW	MARB	REA	FAT
+10	-.9	+40	+72	+8	+21	N/A	N/A	N/A	N/A

- Individual Performance: BW 62 lbs., BWR 94, 205 Wt. 658 lbs., WWR 104.
- Dam's Production: 2 NR 112.
- Grandam's Production: 4 BWR 93, 4 NR 97. She posts 1 @ REA 103, Rib Fat 97, Rump Fat 85.
- Her maternal sister was a feature "picture heifer" in the 2013 sale offering selected by Terry Jones, Towner, ND.
- She ranks in the top 15% for CED EPD and top 5% for BW EPD among non-parent cows in the breed.

# 77 BA Barbaramere 3132

Birth Date: 5-28-2013  
 Koupals Xception 413  
**BA Xception 993**  
 17003199 BA Canyon Queen 514

Cow 17761118  
 #+Whitestone Xception  
 Koupals Ellanah 256  
 SUA LC 2202 W  
 Queen of SAR42

Tattoo: 3132

#SS Objective T510 OT26  
**ELA Barbaramere Jet X431**  
 16748905 ELA Predestined Barb U-134

#SS Traveler 6807 T510  
 SS Miss Rita R011 7R8  
 #GAR Predestined  
 Falcon Barbaramere Jet 2685

PRODUCTION EPDs				MATERNAL EPDs		CARCASS			
CED	BW	WW	YW	CEM	MILK	CW	MARB	REA	FAT
+10	+1	+49	+86	+9	+20	+13	+53	+18	+019

- Individual Performance: BW 62 lbs., BWR 97, 205 Wt. 685 lbs., WWR 108.
- Dam's Production: 1 BWR 97, 2 NR 101. She posts 1 @ IMF 138, Rib Fat 50, Rump Fat 46.
- She shares the #1 WW EPD and the #2 YW EPD as well as posting the #1 \$W value in the sale heifer offering.
- She ranks in the breed's top 15% for both CED and BW EPDs and in the top 25% for \$EN among non-parent cows.
- Her dam was bred at Emerald Lane Angus in WI where she posted individual performance of BWR 86, WWR 112, YWR 105, IMF ratio 140 and REA ratio 110, Fat ratio 88, among 20 contemporaries.
- Her maternal grandsire, SS Objective T510 OT26, is a long-time ABS sire that bridges calving ease, growth and carcass traits with "rock solid" accuracies.

# 76 BA Queen 3131

Birth Date: 5-28-2013  
 BA Navigator 615  
**BA Navigator 815**  
 16284876 #BA Enchantress 631

Cow 17761105  
 #Baldrige Navigator N5  
 Koupals Ebonette 4140  
 #+Whitestone Xception  
 Koupals Enchantress 4114

Tattoo: 3131

SUA Cowboy 419P  
**BA Queen 963**  
 16642605 Queen of BA 507

SUA RH Cowboy 1210Z  
 SUA Canyon Merideth 211  
 Koupals B&B Focus 1011  
 B ALuthien Queen 2439

PRODUCTION EPDs				MATERNAL EPDs		CARCASS			
CED	BW	WW	YW	CEM	MILK	CW	MARB	REA	FAT
+8	+9	+41	+77	+8	+18	N/A	N/A	N/A	N/A

- Individual Performance: BW 66 lbs., 205 Wt. 650 lbs., WWR 100.
- Dam's Production: 2 BWR 98, 2 NR 98.
- Grandam's Production: 4 NR 98.
- Her dam is a promising young cow that gained entrance into the Borns Angus breeding program with individual performance that included a WWR 106.
- Her 2012 maternal sister is retained in the herd.
- She ranks in the top 20% for both CED EPD and \$EN value among non-parent cows in the breed.

# 78 BA Cowgirl 3133

Birth Date: 5-31-2013  
 #Mytty In Focus #05  
**BA In Focus 847**  
 16286713 BA Black Canyon 528

Cow 17761122  
 #SAF Focus of ER  
 Mytty Countess 906  
 SUA LC 2202 W  
 BA Black Focus 308

Tattoo: 3133

BA Navigator 615  
**BA Cowgirl 028**  
 16829782 #BA Cowgirl 638

#Baldrige Navigator N5  
 Koupals Ebonette 4140  
 SUA Cowboy 419P  
 Focus of Blackbird 418

PRODUCTION EPDs				MATERNAL EPDs		CARCASS			
CED	BW	WW	YW	CEM	MILK	CW	MARB	REA	FAT
+4	+2.7	+44	+75	+6	+15	N/A	N/A	N/A	N/A

- Individual Performance: BW 72 lbs., 205 Wt. 593 lbs., WWR 93.
- Dam's Production: 2 NR 91. Calving Interval 2 @ 348 days.
- Grandam's Production: 6 BWR 98, 6 NR 103. Calving Interval 6 @ 366 days.
- Her dam is promising young cow that gained entrance into the Borns Angus breeding program with individual performance that included a BWR 96 and a WWR 107.
- She ranks in the top 15% for \$EN among non-parent cows in the breed.





# 79 BA Xception Lady 3143

Birth Date: 7-6-2013  
 Koupals Xception 413  
**BA Xception 993**  
 17003199 BA Canyon Queen 514

Cow 17791973  
 #+Whitestone Xception  
 Koupals Ellanah 256  
 SUA LC 2202 W  
 Queen of SAR42

Tattoo: 3143

Koupal Eclipse 771  
**BA Larks Lady 937**  
 16642641 BA Larks Lady 694

#OCC Juneau 807J  
 Katinka Advance 133  
 SUA LC 2202 W  
 BA Fantom Lady 1312

PRODUCTION EPDs				MATERNAL EPDs		CARCASS			
CED	BW	WW	YW	CEM	MILK	CW	MARB	REA	FAT
I+4	I+.4	I+34	I+68	I+5	I+17	I+12	I+.02	I+.08	I+.057

- Individual Performance: BW 65 lbs., BWR 100, 205 Wt. 660 lbs., WWR 100.
- Dam's Production: 3 NR 100, 2 YR 107. She posts 2 @IMF 123, Rib Fat 97.
- Grandam's Production: 4 NR 93. She posts 1 @IMF 113.
- Her 2011 maternal brother was selected by Jim Hunter, Hayti, SD after recording a YWR 107 and an IMF ratio 114.
- Her 2012 maternal brother posted a WWR 108, YWR 106, IMF ratio 132 and REA ratio 101.
- This is the youngest heifer in the offering but has grown at a rapid pace.

# 80 Commercial Cow 3119

Birth Date: 5-15-2013  
 #SydGen CC&7  
**RBM CC7 Y40**  
 16984247 ALC Blackbird I04U

Commercial Cow  
 #+SAF Connection  
 SydGen Forever Lady 4087  
 #Mytty In Focus 807  
 +ALC Blackbird 6707

Tattoo: 3119

BA Navigator 615  
**Purebred Angus Cow**

#Baldridge Navigator N5  
 Koupals Ebonette 4140

PRODUCTION EPDs				MATERNAL EPDs		CARCASS			
CED	BW	WW	YW	CEM	MILK	CW	MARB	REA	FAT
+18	-3.7	+48	+100	+13	+37	+38	+87	+36	-.013
N/A	N/A	N/A	N/A	N/A	N/A	N/A	N/A	N/A	N/A

- Individual Performance: BW 82 lbs., Actual Wt. on 11/25/13: 668 lbs.
- This commercial heifer blends familiar pedigrees to the Borns Angus breeding program.
- Her sire stands alone in the breed for his combination of CED, BW and \$B.



# Introducing These Outstanding Borns Angus Herd Sires

## BA Upward 301



**Sitz Upward 307R - Sire of BA Upward 301.**



## BA Upward 301 [DDF]

Birth Date: 2-10-2013  
#Connealy Onward  
Sitz Upward 307R  
#14963730 Sitz Henrietta Pride 81M

Bull 17730276  
#Connealy Lead On  
Altune of Conanga 6104  
#Sitz Value 7097  
Sitz Henrietta Pride 1370

Tattoo: 301

#PVF ALL PAYDAY 729  
Stassen's Blackbird Lou 5R  
16311998 SAF Revs Lady 8H

SAV Payroll 5281  
PVF Blackbird 201  
#Twin Valley Precision E161 [DFI]  
Reno Lady 19-1

PRODUCTION EPDs				MATERNAL EPDs		CARCASS			
CED	BW	WW	YW	CEM	MILK	CW	MARB	REA	FAT
I+3	I+3.4	I+62	I+114	I+6	I+34	I+59	I+.32	I+.72	I+.012

- This performance standout was too old at weaning for a 205 day adjusted weight, but obviously he stands apart. He recorded a BW 79 lbs., act. WW at 288 days of 1035 lbs., adjusted YW of 1299 lbs. and actual IMF 4.48% with an actual REA of 17.8".
- He ranks in the top 2% for YW and \$F, and in the top 5% for WW, Milk, \$W and \$B.
- His sire, Sitz Upward 307R, was the \$85,000 top-selling bull of a past Sitz sale that went on to become a valued member of the Genex/CRI stud. In the nine years since his birth, he has earned Pathfinder status and his name has become synonymous with unparalleled growth and function.
- His dam was bred in the historic Stassen performance herd at Marshall, MN and together with the Borns Angus herdsire, Stassens Impression 5R, made up the \$15,500 2nd top-selling cow/calf pair of the 2012 Stassen Angus Dispersion.



**Connealy Impression - Sire of Stassens Impression 5R.**



**Stassens Impression 5R**

## Stassens Impression 5R [DDF-NHF]

Birth Date: 1-30-2012  
#Connealy Reflection  
Connealy Impression  
#15543702 Pearl Pammy of Conanga 194

Bull 17230605  
#Bon View New Design 878  
Happy Grill of Conanga 6260  
#Vermilion Dateline 7078  
Pearl Jam of Conanga 6114

Tattoo: 5R

#PVF ALL PAYDAY 729  
Stassen's Blackbird Lou 5R  
16311998 SAF Revs Lady 8H

SAV Payroll 5281  
PVF Blackbird 201  
#Twin Valley Precision E161 [DFI]  
Reno Lady 19-1

PRODUCTION EPDs				MATERNAL EPDs		CARCASS			
CED	BW	WW	YW	CEM	MILK	CW	MARB	REA	FAT
+6	+2.1	+63	+103	+10	+28	+34	+51	+1.01	+0.005

- This bull and his dam made up the \$15,500 2nd top-selling pair of the 2012 Stassen Angus Dispersion where cattlemen were impressed by his performance, volume and structural integrity.
- He posted individual performance of BW 76 lbs., BWR 98, 205 day wt. 893 lbs., WWR 108, 365 day wt. 1381, IMF 5.61% and REA 16.8".
- He ranks in the top 10% for WW, Doc and \$B, top 15% for YW, top 2% for REA and \$W.
- Connealy Impression is an ABS sire backed by Sire Alliance data that gave him a #1 ranking for maternal value and in the top 10% for total profit index. Impression is used with much success in the Thompson Angus program at Kintyre, ND. He has an outstanding birth to yearling spread and enough carcass trait punch to give him a \$B in the top 2% of current sires.

SALE MANAGED BY:  
**CONOVER**  
**Auction**  
**Service** Inc.   
Box 9  
Ender, IA 50028

**AL & JEANNE CONOVER**  
641-227-3537 • Fax: 641-227-3792  
Email: conover@conoverauction.com  
www.conoverauction.com



Annual Bull & Female Sale  
**Sunday, May 4, 2014**

**NEW SALE LOCATION**

2:00 PM - GLACIAL LAKES LIVESTOCK SOUTH BARN  
WATERTOWN, SOUTH DAKOTA

