



LOT 734



2019 PERFORMANCE TESTED BULL & SELECT FEMALE SALE

Saturday - 1:00 pm
MARCH 9
2019

At The Ranch
DETROIT LAKES
MINNESOTA



LOT 7107



LOT 721



LOT 744

Maternal Herd That Performs

Saturday - 1:00 pm
**MARCH 9
2019**



At The Ranch
**DETROIT LAKES
MINNESOTA**

2019 PERFORMANCE TESTED BULL & SELECT FEMALE SALE

SELLING 63 HEAD

51 Fall Yearling Bulls
12 Open Heifers

SALE DAY PHONES:

218-439-3597 - 701-429-3759
218-234-9268 - 218-234-6690
218-234-9143

CONOVER AUCTION SERVICE CELL PHONES:
515-491-8078 • 515-491-1335

AMERICAN ANGUS ASSOCIATION

Regional Representative.....Rod Geppert
Board of Directors, Minnesota.....Don Schiefelbein

LIVESTOCK PRESS REPRESENTATIVES

Cattle Business Weekly.....Donnie Leddy (605) 695-0113
Farm & Ranch Guide.....Alex Acheson (785) 366-1185



AUCTIONEER:
AL CONOVER
515.491.8078



20549 230th Ave
Detroit Lakes, MN 56501

KEVIN & DENISE OLSON

218.439.3597 (home)
218.234.6690 (cell)
bigrok@loretel.net

Matt Olson, 218.234.9143

GENERAL INFORMATION

SALE LOCATION: At the Ranch, 20549 230th Ave, Detroit Lakes, MN 56501. Directions to the sale site: From Detroit Lakes, go 3 miles west on Hwy 10 then turn at the Big Rok sign and proceed north for 2 miles or go 3 miles north of Detroit Lakes on Hwy 59 the 1 1/2 miles west and back north 1/2 mile.

MOTEL ACCOMMODATIONS: Country Inn & Suites. Phone: 218-847-2000, be sure to ask for the Big Rok discount.

INSPECTION OF CATTLE: The cattle may be viewed at the ranch anytime prior to the sale, call to make arrangements.

HEALTH: Our entire herd is on a strict vaccination program as recommended by Pfizer. Also, our entire herd is tested for Johnes annually. Any positives are immediately removed from the herd, and also their calves. We will continue to test yearling to insure the health of our cow herd. Any questions about our herd health may be directed to Dr. Dennis Lange, DVM at 218-439-6600. Interstate health papers furnished on all cattle selling.

EPDS & \$VALUES: The American Angus Association is now calculating EPDs on a weekly basis using all available carcass harvest data, ultrasound data and the Igenity Angus specific genomic profile data. It is possible new data has been submitted between the date the catalog was finalized and sale day, which will affect the individual EPDS and \$Values indexes of the animals selling. If your purchasing decision relies highly on the most current data available, please look up animals of interest on the American Angus Association web page prior to viewing the sale offering.

TERMS: Cash - please settle for cattle promptly.

TERMS & CONDITIONS: All cattle sell according to the standard terms and conditions of the American Angus Association.

TRUCKING: We will be glad to assist in making the best possible trucking arrangements.

INSURANCE: Will be available sale day through Conover Auction Service, an American Livestock Agent.

LIABILITY:

All persons attending this sale do so at their own risk, legal or otherwise for their safety or the behavior of the animals. The Owners, Auction Service and Sale Staff assume no liability for property loss or any accidents that may occur.

ANNOUNCEMENTS: From the block will take precedence over the catalog. Buyers unable to attend may send their bids to the Auction Service, Field Representatives or Auctioneer.

LUNCH: Complimentary Lunch Starting at 11:30 am

A \$50 discount on all bulls picked up on sale day or by Sunday, March 10, 2019. Free feeding through the end of April and free delivery within 200 miles on all bulls selling for \$3000 or more.

For bulls selling under \$3000, we will feed bulls and deliver at the end of April for \$100.

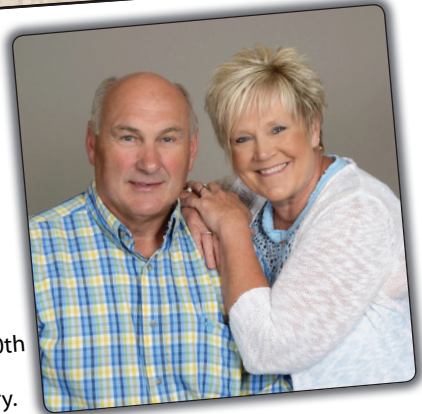


AL & JEANNE CONOVER
641-227-3537 • 641-227-3792 (FAX)
DAVE SWEENEY • 641-373-4340
www.conoverauction.com
conover@conoverauction.com



KEVIN & DENISE OLSON

218.439.3597 (home)
218.234.6690 (cell)
bigrok@loretel.net
Matt Olson. 218.234.9143



Dear Friends and Cattle Producers:

It is with great pleasure that we invite you to our 18th Annual Production Sale. This is our 30th year of raising registered Angus cattle and over 45 years of raising cattle. This experience has shown us that you must have a strong maternal cowherd to be successful in the industry. True performance that is bred in—not fed on.

We are now about 95% fall calving. Because of this decision, most of our bulls are 18-20 months old. These bulls are developed slowly to insure soundness. Our ration is designed for the bulls to gain 2.25-2.50 pounds per day. Not very impressive when compared to some, but we believe this makes for sound breeding bulls that will breed cows for many years.

All of the bulls have had breeding soundness exams, and have had all of their pre-breeding shots. Also this year we have genetic tested some of the top Bulls, so they will have enhanced EPD's. They are ready to go for you.

We will again be offering some elite open replacement heifers. They will be highlighted by our own daughter of Big Rok Polly 520. We have never before sold a direct daughter of hers, so this is a very unique opportunity!

As we did last year, none of the cattle will come into the sale ring to be sold. All sale cattle will be videoed in February. These videos will be used on sale day and also will be available to be viewed around March 1st. This will allow you to preview the sale offering at your convenience. These videos will also be available on our website: www.bigrokangus.com and conoveronlinesales.com.

All the sale cattle will be penned outside of the sale barn on Friday before the sale and the day of the sale. We feel the videos are helpful but still believe it's best to look at the bulls and heifers with your own eyes. Also, we would love to show you our cowherd, as we believe it is our cows that really separate us from the other breeders.

To our past bidders and buyers, we say Thank You and to the people new to Big Rok Angus, we say Welcome. You are all invited to a complimentary homemade lunch before the sale starting at 11:30 am

Big Rok Angus
Kevin and Denise Olson
Billi Jo, Nolan and Khloe
Kelli, Jason, Ali, Kaia, Ty, Bri, and Trey
Matt, Sarah and Charlie

Sale Managed By:



AL & JEANNE CONOVER
641-227-3537 • Fax: 641-227-3792
Email: conover@conoverauction.com
www.conoverauction.com
DAVE SWEENEY 641-373-4340

Dear Angus friends,

It is again our distinct privilege to assist Kevin and Denise Olson with the presentation of their 2019 production sale. It is very easy to follow the breeding philosophy that drives this program now and into the future. Each pedigree in this book is laced with well-thought and planned mating that brings about more than just single trait selection for growth or carcass merit. Instead you can see balance in the value traits and deliberate focus on fertility and maternal value.

If you read between the lines you can see Kevin Olson's preference for moderate mature size, fleshing ability, efficient gain, functional soundness, udder quality and sustainable growth and milk. These are the assets the will keep cattlemen in the business over the long-run.

The foundation dams of this program represent the most distinguished cow families the breed has ever known. They were introduced into this program years ago but continued to be scrutinized through performance and reproductive evaluation, then multiplied using embryo transplant technology to fast track this herd into what it is today.

Legions of repeat customers drive this Angus business ahead. They have come to expect an offering that has survived a gauntlet of performance and ultrasound measures.

Please accept our cordial invitation to join us on March 9th, in Detroit Lakes, MN for this important Angus event.

Sincerely
Al and Jeanne Conover
Dave Sweeney



Al Conover



Jeanne Conover



Dave Sweeney

FIRST YEAR BREEDING GUARANTEE

All bulls selling for \$3,500 or more will be covered if they are injured and will not heal during the first breeding season. Breeding season is defined as the 90-day period following the first turn out of the bulls.

Salvage value of \$2,500 will apply to the credit on any injured bull. 100% of the value of the injured bull will be retained by the bull owner. If a replacement is not available at the time of injury-credit will be given at our next sale.

All injured bulls must be diagnosed by a licensed veterinarian. Please notify us as soon as possible should an injury occur and prior to the injured bull being sold. All claims must be made by October 1st.



Big Rok Reference Dams



Big Rok Polly 858

Ref Dam Born: 02/11/98 +13141288 Tattoo: 858 Cow

Traveler 1148 G D A R #
G D A R Traveler 71 #
10988296 G D A R Miss Blackcap 567
 V D A R New Trend 933 #+
Big Rok Polly 503 #+
12416018 V D A R Polly 215

Q A S Traveler 23-4 #
 Blackcap Forever 485 G D A R #
 Lavana 355 G D A R
 Blackcap Lady 384 G D A R #
 V D A R New Trend 315 #
 Miss Wix 903 of Mc Cumber
 Q A S Traveler 23-4 #
 V D A R Polly 31

PRODUCTION EPDs				MATERNAL EPDs			\$ VALUES			
CED	BW	WW	YW	CEM	Milk	\$EN	\$W	\$F	\$G	\$B
+5	-3	+33	+54	+8	+36	-9.22	+45.48	-1.94	+26.45	+57.43
CARCASS	CW	+13	.37	MARB	+47	.32	REA	-.21	.35	FAT +.052 .32

- 858 is a third-generation donor dam and considered the foundation of the Polly cow family at Big Rok Angus. Three of her daughters in this herd have become Pathfinder dams and a number of daughters and granddaughters have taken turns in the Big Rok donor pen.
- She has progeny ratios of BR 10@99, NR 10@101, YR 10@101, IMF 20@108 and RE 20@102.
- Kevin Olson speaks of Big Rok Polly 858 with great reverence. She produced 20 registered sons and 16 registered daughters from 14 different sires by either natural or ET birth.



Big Rok High Noon 772

Son of reference dam 301 that sells as Lot 772



Big Rok Polly 505

Ref Dam Born: 03/06/15 18092428 Freeze Brand: 505 Cow

S A V Final Answer 0035 #*
S A V Pioneer 7301 #
15688392 S A V Blackbird 5297
 B C C Bushwacker 41-93 #*
Big Rok Polly 520
15104363 Big Rok Polly 150 #

Sitz Traveler 8180 #
 S A V Emulous 8145
 Boyd New Day 8005 #+
 S A V Blackbird 1082
 Paramount Ambush 2172 #
 R C Anita T Bando 918903
 Leachman Explorer #
 Big Rok Polly 858 +

PRODUCTION EPDs				MATERNAL EPDs			\$ VALUES			
CED	BW	WW	YW	CEM	Milk	\$EN	\$W	\$F	\$G	\$B
+3	+2.8	+51	+88	+6	+27	-7.96	+47.67	+38.40	+18.17	+77.36
CARCASS	CW	+26	.24	MARB	+18	.21	REA	+39	.24	FAT +.036 .19

- This up-and-coming young soon-to-be donor descends from the beloved Polly cow family as well.
- Her dam, Big Rok Polly 520 has been a long-time donor herself with a natural progeny record of BWR 10@97, NR 10@103 and YR 7@103. She produced the lot 740 bull in this year's offering that combined a BWR 96 and a WWR 108. "520" produced two sons for the 2018 sale that both sold to Mark Lewis, Hawley MN. Her 2009 daughter by Big Rok Ole 450 is retained in this herd where she boasts 3 NR 106 and 3 YR 103 on AHIR. 2012, 2014 and 2015 daughters are retained as well.
- Her Pathfinder grandam is a direct daughter of Big Rok Polly 858 posts BR 5@100 and NR 5@107. She produced a herd sire for Leininger Cattle Co, Binford ND and a heifer for Rock Prairie Ranch, Little Falls MN.
- The 2017 daughter of Big Rok Polly 703 by Prairie Pride Next Step 2036 is retained.



Big Rok Polly 301

Ref Dam Born: 01/12/13 *17650428 Freeze Brand: 301 Cow

Connealy Product 568 *
Connealy Final Product #*
15848422 Ebonista of Conanga 471 #
 VDAR Right Now 2151 #*
Big Rok Polly 634 #+
15448719 Big Rok Polly 858 +

G A R Retail Product #
 Pride Fine of Conanga 566
 Connealy Deep Canyon 454 #
 Ebonisa of Conanga 5469
 Leachman Right Time #+
 V D A R Elluna 4167 #+
 G D A R Traveler 71 #
 Big Rok Polly 503 #+

PRODUCTION EPDs				MATERNAL EPDs			\$ VALUES			
CED	BW	WW	YW	CEM	Milk	\$EN	\$W	\$F	\$G	\$B
+0	+2.2	+57	+94	+7	+25	-8.07	+54.28	+44.29	+26.52	+75.47
CARCASS	CW	+21	.28	MARB	+48	.21	REA	+02	.24	FAT +.067 .19

- 301 found her way to the donor pen with individual performance that featured a WWR 103 and YWR 114.
- This granddaughter of the foundation Polly 858 came from a Pathfinder dam that had a NR 7@103 and YR 5@105 while maintaining a 367- day calving interval.
- Her first natural-born son, Big Rok Charlo 501 was used in the Big Rok herd on heifers and then sold as a feature in the 2017 sale where he topped the event at \$11,000 to join Prescott Iowa herd of Travis West. Two sons of "501" sell in this offering.
- Two tremendous sons of this cow sell in this sale as lots 741 and 772.



Big Rok Reference Sires



Prairie Pride Next Step 2036

Reference Sire A



Msar High Noon 9463

Reference Sire C



Prairie Pride Next Step 2036

A Born: 03/19/12 * 17367599 Tattoo: 2036 Bull

B/R Destination 727-928 #
SydGen 928 Destination 5420 #+
 15030205 Shady Brook Entense 76D 29H +

Boyd New Day 8005 #+
Flying V Miss Pride 426
 14817424 Flying V Pride 1290

B/R Destination 727 #
 B/R Blackcap Empress 558
 Sitz Traveler 9929 #
 BT Everelda Entense 76D +
 A A R New Trend #
 S V F Forever Lady 57D
 W W Traveler 58 DLX0362
 V A P Miss Pride 164

PRODUCTION EPDs				MATERNAL EPDs			\$ VALUES					
CED	BW	WW	YW	CEM	Milk	SEN	\$W	\$F	\$G	\$B		
+12	+8	+68	+137	+14	+18	-13.39	+53.04	+112.84	+22.11	+162.04		
CARCASS	CW	+68	.52	MARB	+18	.46	REA	+71	.46	FAT	-.052	.47

- Co-owned with RBM Livestock, Florence SD and Prairie Pride Angus, Nome ND.
- Prairie Pride Next Step garnered national attention when he topped the 2013 Prairie Pride Sale at \$37,000 2/3 interest where he posted individual performance of BW 81 lbs, BWR 99, 205-day wt 1006 lbs, WWR119, 365 day wt 1600 lbs, YWR 118 and a yearling REA 17.3, RE ratio 115.
- Next Step may well be the dominant and logical substitution for the deceased sire, SydGen 928 Destination 5420 "Whiskey" in captivity.
- Next Step now records meaningful progeny ratios of BR 1036@100, WR 1012@101 and YR 570@103 from data gathered in 75 herds nation-wide.



Msar High Noon 9463

C Born: 01/24/13 17641774 Tattoo: 9463 Bull

A A R Image Maker 6538
A A R High Five 8563 #
 16210547 A A R Donna 6514 #

Connealy Freightliner #
Msar Pride 103 #
 17043548 Msar Pride 1516

H A Image Maker 0415 #+
 AAR Comanches Princess 4012 #
 ER Justice N013 #
 A A R Donna 701
 Bon View Bando 598 #
 Joana Erica of Conanga
 Sitz Traveler 8180 #
 Msar Pride 9200 +

PRODUCTION EPDs				MATERNAL EPDs			\$ VALUES					
CED	BW	WW	YW	CEM	Milk	SEN	\$W	\$F	\$G	\$B		
+4	+1.1	+71	+114	+4	+18	-4.30	+66.15	+75.05	+31.40	+132.76		
CARCASS	CW	+42	.46	MARB	+45	.40	REA	+58	.41	FAT	+0.32	.39

- Co-owned with Minert Angus Ranch.
- Selected by Big Rok Angus as the \$32,000 1/2 interest sensation of the 2014 Minert-Simonson Angus Ranch Bull Sale where he posted individual performance of BW 85 lbs 205-day wt 800 lbs, WWR 132, 365 day wt 1424 lbs, YWR 118.
- His Pathfinder dam posts a NR 3@106 and YR 1@118.
- His four calf crops have produced tremendous results verified by progeny data that included a BR 165@99, WR 165@102, YR 87@102, and RE 67@104.



SAV Resource 1441

Reference Sire B



SAV Platinum 0010

Reference Sire D



S A V Resource 1441

B Born: 01/07/11 #+*17016597 Tattoo: 1441 Bull

R R Rito 707 #
Rito 707 of Ideal 3407 7075 +
 13066860 Ideal 3407 of 1418 076

S A V 8180 Traveler 004 #
S A V Blackcap May 4136 *
 14739095 S A V May 2397 #+

Rito N Bar
 Eriskay of Rollin Rock 3
 Ideal 1418 of 8103 4286 #
 Ideal 076 of 692 8375
 Sitz Traveler 8180 #
 Boyd Forever Lady 8003 +
 S A F 598 Bando 5175 #+
 S A V May 7238

PRODUCTION EPDs				MATERNAL EPDs			\$ VALUES					
CED	BW	WW	YW	CEM	Milk	SEN	\$W	\$F	\$G	\$B		
+0	+4.1	+70	+134	-1	+19	+90	+62.64	+89.10	+10.58	+128.22		
CARCASS	CW	+64	.66	MARB	-.01	.62	REA	+1.13	.59	FAT	+0.13	.62

- SAV Resource 1441 was the \$110,000 4th top-selling bull of the 2012 SAV Sale and quickly became one of the most heavily used young sires in the breed. His progeny have earned him EPD values for YW, CW and RE in the top 3% or better.
- This year 22 Pathfinder daughters helped Resource again reach Pathfinder status.



S A V Platinum 0010

B Born: 02/21/10 #*16687592 Tattoo: 0010 Bull

S A V Final Answer 0035 #*
S A V Pioneer 7301 #
 15688392 S A V Blackbird 5297

S A V 8180 Traveler 004 #
S A V Greystone Jannet 5345 #
 15107942 S A V Jannet 7059

Sitz Traveler 8180 #
 S A V Emulous 8145
 Boyd New Day 8005 #+
 S A V Blackbird 1082
 Sitz Traveler 8180 #
 Boyd Forever Lady 8003 +
 N Bar Emulation EXT #*
 S A V Jannet 5095 +

PRODUCTION EPDs				MATERNAL EPDs			\$ VALUES					
CED	BW	WW	YW	CEM	Milk	SEN	\$W	\$F	\$G	\$B		
+8	+6	+69	+117	+14	+21	-11.18	+64.04	+76.58	+7.31	+102.67		
CARCASS	CW	+41	.58	MARB	+0.07	.53	REA	+59	.52	FAT	+0.18	.54

- Platinum is an Accelerated Genetics featured sire and a proven curve-bender that offers calving ease with exceptional growth and maternal traits.
- He is now a Pathfinder sire with 250 plus daughters in production earning high marks for SC top 20%, HP top 20%, CEM top 5% and \$W top 15% - all "take it to the bank" traits.

Big Rok Reference Sires



Connealy Guinness
Reference Sire E



MAR Innovation 251
Reference Sire G



Connealy Guinness

Born: 01/31/11 #* 17031279 Tattoo: 1337 Bull

Connealy Full Freight
Connealy Dublin 8223 #
16204943 Black Rina of Conanga 69

EGL Target 1148
Panda of Conanga 3609
15147071 Ponderra of Conanga 750

Connealy Freightliner #
Powesta of Conanga 687 15 +
Connealy Onward #*
Black Race of Conanga 123 #
Bon View New Design 1407 #
EGL 9420
Connealy Virginian 681
Paplan of Conanga

PRODUCTION EPDs				MATERNAL EPDs			\$ VALUES					
CED	BW	WW	YW	CEM	Milk	SEN	\$W	\$F	\$G	\$B		
+4	+1.6	+63	+114	+6	+31	-23.97	+63.16	+84.66	+47.41	+162.56		
CARCASS	CW	+47	.67	MARB	+1.21	.64	REA	+27	.60	FAT	+0.46	.63

- Guinness is an Accelerated Genetics feature with tremendous growth and amazing Marbling EPDs.
- He is now a Pathfinder sire with high accuracies and a reputation as a strong maternal sire making great daughters that are deep, easy doing and have excellent udders.



MAR Innovation 251

Born: 02/03/11 #*16983331 Tattoo: 251 Bull

Connealy Reflection #
Connealy Impression #*
15543702 Pearl Pammy of Conanga 194

S A V Final Answer 0035 #*
MAR Final Kahuna 856 #*
16450035 MAR Kahuna Precision 328 674 #

Bon View New Design 878 #
Happy Grill of Conanga 6260
Vermilion Dateline 7078 #
Pearl Jam of Conanga 6114
Sitz Traveler 8180 #
S A V Emulous 8145
River Hills Kahuna 175M #+
MAR Precision 328 Bush 700 #

PRODUCTION EPDs				MATERNAL EPDs			\$ VALUES					
CED	BW	WW	YW	CEM	Milk	SEN	\$W	\$F	\$G	\$B		
+1	+3.1	+66	+114	+10	+26	-13.09	+62.32	+81.20	+41.20	+143.89		
CARCASS	CW	+41	.71	MARB	+5.6	.67	REA	+71	.64	FAT	-0.02	.67

- MAR Innovation 251 is a Genex featured sire considered one of their best all-around performance and maternal sires. Physically, he is a much-admired bull that is complete and powerful. He offers incredible body capacity and base width with large testicles and a great disposition.
- Innovation is out of a fourth-generation Pathfinder dam.



Big Rok Charlie 550
Reference Sire F



Big Rok Solid 573
Reference Sire H



Big Rok Charlie 550

Born: 08/16/15 18427983 Freeze Brand: 550 Bull

O C C Paxton 730P #*
Coleman Charlo 0256 #+*
16879074 Bohi Abigale 6014 +

Sitz Upward 10379 #*
Big Rok Polly 230
17341509 Big Rok Polly 520

O C C Focus 813F +
O C C Blackbird 736K
Sitz Traveler 8180 #
S A V Abigale 6062
Sitz Upward 307R #
Sitz Everelda Entense 1947
B C C Bushwacker 41-93 #
Big Rok Polly 150 #

PRODUCTION EPDs				MATERNAL EPDs			\$ VALUES					
CED	BW	WW	YW	CEM	Milk	SEN	\$W	\$F	\$G	\$B		
+5	+2.2	+59	+106	+2	+27	-9.73	+60.33	+55.63	+19.65	+103.01		
CARCASS	CW	+40	.26	MARB	+24	.20	REA	+50	.24	FAT	+0.46	.20

- 550 earned pasture service duties at Big Rok after posting individual performance of WWR 108, YWR 109 and RE ratio 113.
- His dam currently boasts BR 4@100, NR 4@105 and YR 4@102. She also produced the lot 786 in this offering that posted a WWR 107 and YWR 102.
- Two maternal sisters are retained in the herd.
- Big Rok Charlie 550 was selected by Al Olson, Menahga MN at \$6000 from the 2017 sale offering.



Big Rok Solid 573

Born: 08/19/15 18427917 Freeze Brand: 573 Bull

Basin Expedition R156 +
Basin Excitement #*
16047404 Basin Lady S532 AK

Kesslers Frontman R001 #*
Big Rok Polly 228
17341499 Big Rok Polly 029 +

Gardens Expedition #
Basin Primrose Lady 5287
Vermilion Payweight J847 #
Basin Lady 306E
Connealy Front Page 0228 #
Kesslers Bell 0024
Wulffs Ext 6106 #+
Big Rok Polly 858 +

PRODUCTION EPDs				MATERNAL EPDs			\$ VALUES					
CED	BW	WW	YW	CEM	Milk	SEN	\$W	\$F	\$G	\$B		
+12	-1.8	+60	+108	+8	+27	-9.74	+69.14	+61.34	+14.81	+105.01		
CARCASS	CW	+42	.43	MARB	+1.15	.38	REA	+36	.38	FAT	+0.26	.36

- 573 was a standout in his contemporary group posting individual performance of BWR 98, WWR 120, YWR 113, IMF ratio 111 and RE ratio 109. He was used with enthusiasm in the breeding program until he sold in the 2017 sale to Travis West, Prescott IA at \$11,000.
- 573 is a calving ease bull with a progeny BWR 10@96 and a progeny YR 5@102. He enjoys a CED and \$W value in the top 10% and a BW EPD in the top 5% of proven sires.

One of The Largest Selections of 18 Month Old Bulls In The Area



Big Rok Guinness 708



Big Rok High Noon 654

\$4000 full brother to lot 717 selected by Mark Lewis, MN

708 Born: 07/24/17 19134989 Freeze Brand: 708 Bull

Connealy Dublin 8223 #
Connealy Guinness #*
 17031279 Panda of Conanga 3609

Koupals B&B Extra 0011 #
Big Rok Polly 572
 18427960 Big Rok Polly 106

Connealy Full Freight
 Black Rina of Conanga 69
 EGL Target 1148
 Pondera of Conanga 750
 Koupals B&B EXTRA 7080 #
 B&B Blkbd Progress 5030 #
 Sitz Dash 10277 #*
 Big Rok Polly 605 +

BW		205 Wt.		WWR		365 Wt.		YWR			
64		622		95		1094		104			
PRODUCTION EPDs				MATERNAL EPDs				\$ VALUES			
CED	BW	WW	YW	CEM	Milk	\$EN	\$W	\$F	\$G	\$B	
I+4	I+1.6	I+64	I+110	I+10	I+27	-21.81	+57.78	+73.09	NA	NA	
CARCASS	CW	NA	MARB	NA	REA	NA	FAT	NA	NA	NA	

- Projected wt on 3-9-19: 1584 lbs. Scrotal Measurement: 43.0 cm.
- Born unassisted out of a first-calf heifer that earned her entrance to the Big Rok breeding program with individual performance that included a BWR 91 and WWR 107.

711 Born: 07/25/17 19130074 Freeze Brand: 711 Bull

SydGen 928 Destination 5420 #+
Prairie Pride Next Step 2036 *
 17367599 Flying V Miss Pride 426

Msar High Noon 9463
big Rok Lucy 5107
 18426742 Big Rok Lucy 355

B/R Destination 727-928 #
 Shady Brook Entense 76D 29H +
 Boyd New Day 8005 #+
 Flying V Pride 1290
 A A R High Five 8563 #
 Msar Pride 103 #
 Connealy Mentor 7374 #*
 Big Rok Lucy 840



BW		205 Wt.		WWR		365 Wt.		YWR				
72		680		104		1048		99				
PRODUCTION EPDs				MATERNAL EPDs				\$ VALUES				
CED	BW	WW	YW	CEM	Milk	\$EN	\$W	\$F	\$G	\$B		
+7	+2.4	+72	+124	+7	+13	+3.03	+59.48	+82.61	+22.07	+135.00		
CARCASS	CW	+53	.39	MARB	+26	.33	REA	+47	.34	FAT	+0.05	.30

- Projected wt on 3-19-19: 1530 lbs. Scrotal Measurement: 40.5 cm.
- Dam's Production: BR 1@98, NR 1@104, YR 1@99.
- Born unassisted out of a first-calf heifer.
- The Next Step X High Noon mating looks like a golden cross. He ranks in the top 5% for WW and top 10% for YW among non-parent bulls.
- **Recommended for heifers or cows.**

709 Born: 07/21/17 19158424 Freeze Brand: 709 Bull

Connealy Dublin 8223 #
Connealy Guinness #*
 17031279 Panda of Conanga 3609

B C C Bushwacker 41-93#
Big Rok Ruby 572
 15104317 Big Rok Ruby 027

Connealy Full Freight
 Black Rina of Conanga 69
 EGL Target 1148
 Pondera of Conanga 750
 Paramount Ambush 2172 #
 R C Anita T Bando 918903
 V D A R Lucys Boy #+
 Big Rok Miss Ruby 750

BW		205 Wt.		WWR		365 Wt.		YWR				
66		640		98		1080		102				
PRODUCTION EPDs				MATERNAL EPDs				\$ VALUES				
CED	BW	WW	YW	CEM	Milk	\$EN	\$W	\$F	\$G	\$B		
I+3	I+1.9	I+47	I+75	I+7	I+28	-7.34	+47.36	+28.12	+39.86	+110.01		
CARCASS	CW	I+28	.05	MARB	I+72	.05	REA	I+24	.05	FAT	I+0.32	.05

- Projected wt on 3-9-19: 1564 lbs. Scrotal Measurement: 40.0 cm.
- Dam's Production: BR 3@97, NR 3@99.
- He posted the #1 Marb EPD in the sale offering ranking in the top 25% for the carcass quality trait.
- Maternal brothers have sold to Mark Lewis, Hawley MN and Linda Johnson, Pequot Lakes MN.

717 Born: 07/26/17 19130075 Freeze Brand: 717 Bull

A A R High Five 8563 #
Msar High Noon 9463
 17641774 Msar Pride 103 #

Sitz Upward 10379 #*
Big Rok Lucy 2101
 17545532 Big Rok Lucy 601

A A R Image Maker 6538
 A A R Donna 6514 #
 Connealy Freightliner #
 Msar Pride 1516
 Sitz Upward 307R #
 Sitz Everelda Entense 1947
 VDAR Foundation 1504 +
 Big Rok Polly 430 #

BW		205 Wt.		WWR		365 Wt.		YWR				
80		651		100		1032		98				
PRODUCTION EPDs				MATERNAL EPDs				\$ VALUES				
CED	BW	WW	YW	CEM	Milk	\$EN	\$W	\$F	\$G	\$B		
+7	+0.1	+54	+92	+6	+26	-10.20	+54.38	+45.82	+31.49	+109.08		
CARCASS	CW	I+33	.05	MARB	I+43	.05	REA	I+42	.05	FAT	I+0.18	.05

- Projected wt on 3-9-19: 1580 lbs. Scrotal Measurement: 44.0 cm.
- Dam's Production: NR 3@107, YR 2@102, IMF 1@100, REA 1@111, Rib Fat 1@91, Rump Fat 1@94. Calving Interval 3@346 days.
- His maternal brother was the \$4000 selection of Mark Lewis, Hawley MN from the 2018 auction.
- He shares the #3 lowest BW EPD in the sale offering.
- **Recommended for heifers or cows.**

They Are More Mature and Ready To Work



Big Rok High Noon 719



Big Rok Next Step 671
\$3750 maternal brother to lot 719 selected by Gary & Lisa Marschall, MN



Big Rok High Noon 719

Born: 07/26/17 19130076 Freeze Brand: 719 Bull

A A R High Five 8563 #
Msar High Noon 9463
17641774 Msar Pride 103 #

Sitz Upward 10379 *
Big Rok Polly 299 #
17524629 Big Rok Polly 825 +

A A R Image Maker 6538
A A R Donna 6514 #
Connealy Freightliner #
Msar Pride 1516
Sitz Upward 307R #
Sitz Everelda Entense 1947
Big Rok Ole 450
Big Rok Polly 510 #



BW	205 Wt.	WWR	365 Wt.	YWR								
84	697	107	1151	109								
PRODUCTION EPDs				MATERNAL EPDs				\$ VALUES				
CED	BW	WW	YW	CEM	Milk	\$EN	\$W	\$F	\$G	\$B		
+5	+2.0	+71	+124	+5	+30	-22.31	+73.47	+86.23	+34.08	+155.56		
CARCASS	CW	+57	.37	MARB	+63	.32	REA	+38	.32	FAT	+0.30	.28

- Projected wt on 3-9-19: 1780 lbs. Scrotal Measurement: 44.0 cm.
- Dam's Production: NR 4@110, YR 4@105, IMF 2@107, REA 2@105. Calving Interval 4@360 days.
- His only maternal sister is retained in the breeding program where she posts NR 2@101, while maternal brothers have each posted a WWR 114 and sold to Mark Lewis, Hawley MN and Gary & Lisa Marschall, Menahga MN.
- He recorded the #3 highest SW (top 3%) and \$B in the sale offering with WW EPD and YW EPD in the top 5% and 10% respectively.
- Retaining 1/3 interest.



Big Rok High Noon 720

Born: 07/26/17 19130077 Freeze Brand: 720 Bull

A A R High Five 8563 #
Msar High Noon 9463
17641774 Msar Pride 103 #

Sitz Upward 307R #
Big Rok Polly 0102
16763404 Big Rok Polly 447 #+

A A R Image Maker 6538
A A R Donna 6514 #
Connealy Freightliner #
Msar Pride 1516
Connealy Onward #*
Sitz Henrietta Pride 81M
Bon View New Design 878 #
Big Rok Polly 510 #



BW	205 Wt.	WWR	365 Wt.	YWR								
82	704	108	1107	105								
PRODUCTION EPDs				MATERNAL EPDs				\$ VALUES				
CED	BW	WW	YW	CEM	Milk	\$EN	\$W	\$F	\$G	\$B		
-2	+2.8	+68	+112	+2	+21	-2.36	+65.61	+83.04	+38.54	+152.74		
CARCASS	CW	+44	.37	MARB	+66	.31	REA	+44	.32	FAT	+0.22	.28

- Projected wt on 3-9-19: 1688 lbs. Scrotal Measurement: 36.0 cm.
- Dam's Production: BR 5@99, NR 5@102, YR 4@103.
- David Olsgaard, Kindred ND chose a maternal brother in 2016 and Jason & Kelli Langerud, Hawley MN selected his brother in 2015 at \$6500.
- His dam earned her entrance into the Big Rok breeding program with individual performance highlighted by a WWR 108 and YWR 110. She goes back to Polly 510.
- He posted the #1 Heifer Pregnancy EPD and the #4 highest \$B value in the sale offering.



Big Rok Emblazon 385

\$6500 maternal brother to lot 720 selected by Jason Langerud, MN



Big Rok Excitement 562
\$3750 maternal brother to lot 719 selected by Mark Lewis, MN

One of The Largest Selections of 18 Month Old Bulls In The Area



Big Rok High Noon 721



Big Rok High Noon 721

Born: 07/27/17 19130078 Freeze Brand: 721 Bull

SydGen 928 Destination 5420 #+
Prairie Pride Next Step 2036*
 17367599 Flying V Miss Pride 426

C C A Emblazon 702#*
Big Rok Lucy 360
 17812827 Big Rok Lucy 933

B/R Destination 727-928 #
 Shady Brook Entense 76D 29H +
 Boyd New Day 8005 #+
 Flying V Pride 1290
 O C C Emblazon 854E #+
 Limestone Blackcap R128
 Connealy Packer 547 #
 Big Rok Lucy 598



BW	205 Wt.	WWR	365 Wt.	YWR										
82	713	109	1140	108										
PRODUCTION EPDs				MATERNAL EPDs				\$ VALUES						
CED	BW	WW	YW	CEM	Milk	\$EN	\$W	\$F	\$G	\$B				
+12	-0.3	+64	+119	+13	+29	-19.62	+67.75	+82.98	+29.18	+148.34				
CARCASS	CW	+	39	MARB	+	.34	REA	+	.61	.34	FAT	-	.009	.30

- Projected wt on 3-9-19: 1662 lbs. Scrotal Measurement: 40.0 cm.
- Dam's Production: BR 3@100, NR 3@102, YR 2@109. Calving Interval 3@344 days.
- His dam posted earned her admittance to the Big Rok breeding program with individual performance featuring a BWR 92, WWR 105. Her 2016 daughter mimicked her mother with a BWR 93, WWR 104 and YWR 110 and was also retained.
- He recorded the #2 highest CED and the #2 lowest BW EPD in the sale offering.
- He ranks in the top 15% or better for CED, BW, WW, YW, CEM and \$W.
- **Recommended for heifers or cows.**



Big Rok Substantial 727

Born: 07/29/17 19135019 Freeze Brand: 727 Bull

Benfield Substance 8506 #*
Mohnen Substantial 272*
 17292558 Mohnen Glyn Mawr Elba 1758

A A R Really Windy 1205#
Big Rok Polly 568
 18427873 Big Rok Polly 3101

H A Image Maker 0415 #+
 Benfield Edella 1105
 LT Territory 5824 of EA #
 Mohnen Glyn Mawr Elba 1345
 A A R Windy Ridge 362
 A A R Lady Kelton 2170
 Big Rok Cedar Lad 182
 Big Rok Polly 825 +

BW	205 Wt.	WWR	365 Wt.	YWR							
78	692	106	1081	103							
PRODUCTION EPDs				MATERNAL EPDs				\$ VALUES			
CED	BW	WW	YW	CEM	Milk	\$EN	\$W	\$F	\$G	\$B	
+11	+0.7	+56	+98	+6	+24	-12.17	+49.97	+56.36	NA	NA	
CARCASS	CW	NA	MARB	NA	REA	NA	FAT	NA	NA	NA	

- Projected wt on 3-9-19: 1564 lbs. Scrotal Measurement: 41.5 cm.
- Dam's Production: NR 1@106, YR 1@103.
- Born unassisted out of a first-calf heifer.
- His sire Mohnen Substantial 272 is a bet-the-ranch calving ease sire ranking in the top 1% for CED and top 4% for BW EPD with accuracies in the 90s. He is an ABS Global feature and an Angus Sire Alliance graduate with a Feed Efficiency in the highest 5% and Total Profit index in the top 20%
- His calving ease credentials are confirmed by a CED EPD in the top 15% of non-parent bulls.
- **Recommended for heifers or cows.**



Big Rok Substantial 727



Mohnen Substantial 272

Sire of Lot 727

They Are More Mature and Ready To Work



Big Rok Next Step 734



733 **Big Rok High Noon 733**
 Born: 07/29/17 19130086 Freeze Brand: 733 Bull

A A R High Five 8563 #
Msar High Noon 9463
 17641774 Msar Pride 103 #
 Big Rok Cedar Lad 182
Big Rok Heather Lass 399
 17812834 Big Rok Heather Lass 038 +

A A R Image Maker 6538
 A A R Donna 6514 #
 Connealy Freightliner #
 Msar Pride 1516
 Cole Creek Black Cedar 46P #
 Big Rok Lucy 678
 Big Rok Benchmark 610
 Big Rok Heather Lass 236



BW		205 Wt.		WWR		365 Wt.		YWR				
82		694		106		1121		106				
PRODUCTION EPDs				MATERNAL EPDs			\$ VALUES					
CED	BW	WW	YW	CEM	Milk	\$EN	\$W	\$F	\$G	\$B		
+6	+1.5	+73	+129	+5	+26	-18.72	+72.64	+97.81	+22.71	+137.26		
CARCASS	CW	+49	.37	MARB	+31	.31	REA	+27	.32	FAT	+0.10	.28

- Projected wt on 3-9-19: 1650 lbs. Scrotal Measurement: 41.0 cm.
- Dam's Production: NR 3@102, YR 2@107. Calving Interval 3@356 days.
- His maternal sister was the herd replacement acquisition of David Irlbeck, Eagle Bend MN from the 2017 sale offering. His 2016 sister posted a BWR 98, WWR 111, YWR 108 and is retained in the program.
- This High Noon son has elite EPD values ranking in the top 4% for both WW and YW, top 10% for HP and top 5% for \$W value.

734 **Big Rok Next Step 734**
 Born: 07/29/17 19130083 Freeze Brand: 734 Bull

SydGen 928 Destination 5420 #+
Prairie Pride Next Step 2036 *
 17367599 Flying V Miss Pride 426
 Cole Creek Black Cedar 46P #
Big Rok Polly 128 +
 17041635 Big Rok Polly 917 #

B/R Destination 727-928 #
 Shady Brook Entense 76D 29H +
 Boyd New Day 8005 #+
 Flying V Pride 1290
 C H Quantum 6247 #
 Cole Creek Clova Juanada 67
 Big Rok Benchmark 610
 Big Rok Polly 858 +



BW		205 Wt.		WWR		365 Wt.		YWR				
80		646		99		1153		109				
PRODUCTION EPDs				MATERNAL EPDs			\$ VALUES					
CED	BW	WW	YW	CEM	Milk	\$EN	\$W	\$F	\$G	\$B		
+8	+2.4	+73	+131	+11	+10	+1.48	+52.15	+108.72	+18.71	+155.81		
CARCASS	CW	+59	.38	MARB	+14	.33	REA	+70	.33	FAT	-0.18	.29

- Projected wt on 3-9-19: 1734 lbs. Scrotal Measurement: 42.0 cm.
- Dam's Production: BR 5@100, NR 5@104, YR 3@108, IMF 1@159. Calving Interval 5@364 days.
- His maternal brother was the herd sire selection of Mark Lewis, Hawley MN in 2016. Each of his maternal sisters have been retained in the herd, the eldest posts a NR 2@108 and YR 2@110 on AHIR.
- This calving ease prospect posts a WW EPD in the top 4% and a YW EPD in the top 3% among non-parent bulls.
- Recommended for heifers or cows.
- Retaining 1/3 interest.

737 **Big Rok Next Step 737**
 Born: 07/29/17 19130093 Freeze Brand: 737 Bull

SydGen 928 Destination 5420 #+
Prairie Pride Next Step 2036 *
 17367599 Flying V Miss Pride 426
 Connealy Packer 547 #
Big Rok Black Missy 920
 16433729 G K A F Black Mischief 7730

B/R Destination 727-928 #
 Shady Brook Entense 76D 29H +
 Boyd New Day 8005 #+
 Flying V Pride 1290
 Feltons Meat Packer 62 #
 Bestrelle of Conanga 539
 Big Rok Titan 249
 G K A F Black Mischief 106 #

BW		205 Wt.		WWR		365 Wt.		YWR				
84		672		103		1053		100				
PRODUCTION EPDs				MATERNAL EPDs			\$ VALUES					
CED	BW	WW	YW	CEM	Milk	\$EN	\$W	\$F	\$G	\$B		
+5	+1.8	+57	+106	+8	+24	-15.85	+45.51	+70.65	+21.98	+135.21		
CARCASS	CW	+49	.05	MARB	+1.22	.05	REA	+1.48	.05	FAT	+0.12	.05

- Projected wt on 3-9-19: 1600 lbs. Scrotal Measurement: 42.5 cm.
- Dam's Production: NR 4@104, YR 4@101, REA 5@103, Rump Fat 5@93.
- Twin brothers sold in the 2018 sale offering James Gust Jr, Badger MN and AK Schubert, Brainerd MN. Additional brothers were selected by Allen Olson, Menahga MN from the 2014 sale offering and Glen Przybilla, Royalton MN in 2017.
- Maternal grandsire, Connealy Packer 547 has seen wide-spread use in the industry for his rock-solid performance and carcass data. Daughters of Packer are said to be fantastic females that stay in the herd.

739 **Big Rok High Noon 739**
 Born: 07/29/17 19130085 Freeze Brand: 739 Bull

A A R High Five 8563 #
Msar High Noon 9463
 17641774 Msar Pride 103 #
 Big Rok Titan 233
Big Rok Heather Lass 893
 16134476 Big Rok Heather Lass 718 +

A A R Image Maker 6538
 A A R Donna 6514 #
 Connealy Freightliner #
 Msar Pride 1516
 G D A R Traveler 044 #
 Big Rok Polly 503 #+
 G D A R Traveler 71 #
 V D A R Heather Lass 187

BW		205 Wt.		WWR		365 Wt.		YWR				
84		741		113		1115		105				
PRODUCTION EPDs				MATERNAL EPDs			\$ VALUES					
CED	BW	WW	YW	CEM	Milk	\$EN	\$W	\$F	\$G	\$B		
+3	+1.7	+64	+103	+5	+23	-10.41	+59.71	+61.85	+24.68	+115.77		
CARCASS	CW	+37	.05	MARB	+1.31	.05	REA	+1.39	.05	FAT	+0.22	.05

- Projected wt on 3-9-19: 1600 lbs. Scrotal Measurement: 44.5 cm.
- Dam's Production: BR 8@93, NR 8@100, YR 6@98, IMF 2@101, REA 2@107, Rump Fat 2@100. Lynn Moe, Walcott ND and Mark Lewis, Hawley MN have each selected a maternal brother for their breeding programs.
- His oldest maternal sister has a NR 6@108, YR 5@107, IMF 3@105 and RE 3@108. She produced Big Rok High Noon 7107 the #1 heaviest yearling wt bull in this offering that sells as lot 7107.

One of The Largest Selections of 18 Month Old Bulls In The Area



Big Rok Rainmaker 744



Coleman Rainmaker 356
Sire of Lot 744



Big Rok High Noon 740

Born: 07/29/17 19130109 Freeze Brand: 740 Bull

A A R High Five 8563 #
Msar High Noon 9463
17641774 Msar Pride 103 #

B C C Bushwacker 41-93#
Big Rok Polly 520
15104363 Big Rok Polly 150 #

A A R Image Maker 6538
A A R Donna 6514 #
Connealy Freightliner #
Msar Pride 1516
Paramont Ambush 2172 #
R C Anita T Bando 918903
Leachman Explorer #
Big Rok Polly 858 +

BW		205 Wt.		WWR		365 Wt.		YWR		
78		703		108		1050		100		
PRODUCTION EPDs				MATERNAL EPDs			\$ VALUES			
CED	BW	WW	YW	CEM	Milk	SEN	\$W	\$F	\$G	\$B
+4	+1.4	+60	+92	+5	+24	-8.09	+59.08	+43.00	+18.12	+94.15
CARCASS	CW			MARB		REA		FAT		
+7	+1.32	.05		+1.23	.05	+1.29	.03	+0.46	.05	

- Projected wt on 3-9-19: 1480 lbs. Scrotal Measurement: 41.0 cm.
- Dam's Production: BR 10@97, NR 10@103, YR 7@103.
- His dam, Big Rok Polly 520 has been a long-time donor and top producer. "520" produced two sons for the 2018 sale that both sold to Mark Lewis, Hawley MN. Her 2009 daughter by Big Rok Ole 450 is retained in this herd where she boasts 3 NR 106 and 3 YR 103 on AHIR. 2012, 2014 and 2015 daughters are retained as well.
- His Pathfinder grandam is a direct daughter of Big Rok Polly 858 posts BR 5@100 and NR 5@107. She produced a herd sire for Leininger Cattle Co, Binford ND and a heifer for Rock Prairie Ranch, Little Falls MN.



Big Rok Rainmaker 744

Born: 07/30/17 19130092 Freeze Brand: 744 Bull

Basin Rainmaker 654X #
Coleman Rainmaker 356 +
14796879 KMK Donna J311 +

Msar High Noon 9463
Big Rok Lucy 558
18426729 Big Rok Lucy 136

Basin Rainmaker D S 380U #
Basin Bardolene 423U
D H D Traveler 6807 #
Brooks Donna 319 +
A A R High Five 8563 #
Msar Pride 103 #
Cole Creek Black Cedar 46P #
Big Rok Lucy 604

BW		205 Wt.		WWR		365 Wt.		YWR		
78		777		119		1161		110		
PRODUCTION EPDs				MATERNAL EPDs			\$ VALUES			
CED	BW	WW	YW	CEM	Milk	SEN	\$W	\$F	\$G	\$B
+7	+0.4	+59	+99	+4	+32	-23.77	+61.57	+56.06	NA	NA
CARCASS	CW			MARB		REA		FAT		
+7	+1.32	.05		+1.23	.05	+1.29	.03	+0.46	.05	

- Projected wt on 3-9-19: 1616 lbs. Scrotal Measurement: 39.0 cm.
- Dam's Production: NR 1@119, YR 1@110.
- Astonishing individual performance was demonstrated by this calving ease prospect that was born unassisted out of a first-calf heifer.
- He recorded the #2 heaviest adj weaning wt and the #5 heaviest adj yearling wt in the sale offering.
- His sire, Coleman Rainmaker 356 is a full brother to Coleman Donna 386, foundation Donna that produced a slew of AI and herd sires, as well as females that include Coleman Donna 714, the \$145,000 1/2 interest dam of Coleman Regis 904.
- Recommended for heifers or cows.



Big Rok High Noon 741

Born: 07/29/17 +19130107 Freeze Brand: 741 Bull

A A R High Five 8563 #
Msar High Noon 9463
17641774 Msar Pride 103 #

Connealy Final Product**
Big Rok Polly 301 *
17650428 Big Rok Polly 634 #+

A A R Image Maker 6538
A A R Donna 6514 #
Connealy Freightliner #
Msar Pride 1516
Connealy Product 568 *
Ebonista of Conanga 471 #
VDAR Right Now 2151 +*
Big Rok Polly 858 +



BW		205 Wt.		WWR		365 Wt.		YWR		
82		665		95		1081		98		
PRODUCTION EPDs				MATERNAL EPDs			\$ VALUES			
CED	BW	WW	YW	CEM	Milk	SEN	\$W	\$F	\$G	\$B
+5	+0.1	+58	+90	+5	+22	+0.90	+62.44	+38.94	+24.58	+66.11
CARCASS	CW			MARB		REA		FAT		
+8	+1.4	.05		+1.41	.05	+1.27	.05	+1.49	.05	

- Projected wt on 3-9-19: 1572 lbs. Scrotal Measurement: 42.0 cm.
- Dam's Production: BR 3@100, NR 3@100, YR 2@100, IMF 1@100, REA 1@100, Rib Fat 1@100, Rump Fat 1@100.
- Flush brother sells as lot 772.
- This High Noon son from the ET program is a maternal brother to the \$4800 selection of Mike and Ryan Hough, Barnsville MN in the 2016 sale.
- He shares the #3 lowest BW EPD in the sale offering.
- Recommended for heifers or cows.



Big Rok Next Step 745

Born: 07/30/17 19130080 Freeze Brand: 745 Bull

SydGen 928 Destination 5420 #+
Prairie Pride Next Step 2036 *
17367599 Flying V Miss Pride 426

O C C Great Plains 943G#+
Big Rok Lucy 270
17524686 Big Rok Lucy 0112

B/R Destination 727-928 #
Shady Brook Entense 76D 29H +
Boyd New Day 8005 #+
Flying V Pride 1290
N Bar Emulation EXT **
Dixie Erica of C H 1019
Big Rok Benchmark 610
Big Rok Lucy 360

BW		205 Wt.		WWR		365 Wt.		YWR		
82		656		100		1067		101		
PRODUCTION EPDs				MATERNAL EPDs			\$ VALUES			
CED	BW	WW	YW	CEM	Milk	SEN	\$W	\$F	\$G	\$B
+8	+1.4	+59	+111	+10	+19	-11.55	+42.46	+78.70	+26.25	+126.86
CARCASS	CW			MARB		REA		FAT		
+8	+1.4	.05		+1.41	.05	+1.27	.05	+1.49	.05	

- Projected wt on 3-9-19: 1690 lbs. Scrotal Measurement: 38.5 cm.
- Dam's Production: YR 3@101, IMF 1@126, Rib Fat 1@100, Rump Fat 1@83. Calving Interval 4@362 days.
- Eric Leritz, Menahga MN selected his maternal brother in 2016.
- Here is a calving ease prospect by Next Step that ranks in the top 20% for YW EPD.
- Recommended for heifers or cows.

They Are More Mature and Ready To Work



Big Rok Innovation 756



Cole Creek Black Cedar 46P Sire of Lot 761



Big Rok Resource 746

Born: 07/30/17 19133913 Freeze Brand: 746 Bull

Rito 707 of Ideal 3407 7075 +
S A V Resource 1441 #+*
17016597 S A V Blackcap May 4136 *

Connealy Final Product #*
Big Rok Beauty 214
17341507 Big Rok Beauty 468 #

R R Rito 707 #
Ideal 3407 of 1418 076
S A V 8180 Traveler 004 #
S A V May 2397 #+
Connealy Product 568 *
Ebonista of Conanga 471 #
B/R New Frontier 095 #+
Big Rok Beauty 050 +

BW		205 Wt.		WWR		365 Wt.		YWR				
88		624		96		1042		99				
PRODUCTION EPDs				MATERNAL EPDs			\$ VALUES					
CED	BW	WW	YW	CEM	Milk	SEN	\$W	\$F	\$G	\$B		
-2	+4.0	+58	+113	+2	+20	-13.79	+32.30	+83.29	+22.56	+139.79		
CARCASS	CW	I+50	.05	MARB	I+.25	.05	REA	I+.69	.05	FAT	I+.024	.05

- Projected wt on 3-9-19: 1598 lbs. Scrotal Measurement: 42.0 cm.
- Dam's Production: NR 4@97, YR 3@99, IMF 2@112. Calving Interval 4@361 days.
- His dam is a young Final Product daughter that recorded individual performance featuring a WWR 106, YWR 114, IMF ratio 111 and RE ratio 105. Her first-born bull was a high marbling bull by Cole Creek Black Cedar that was selected by Allen Olson, Menahga MN. Her son in the 2018 sale was chosen by Mark Lewis, Hawley MN.



Big Rok Innovation 756

Born: 07/31/17 19133896 Freeze Brand: 756 Bull

Connealy Impression #*
MAR Innovation 251 #*
17650416 MAR Final Kahuna 856 #*

S A V Priority 7283 #*
Big Rok Lucy 317
17650416 Big Rok Lucy 598

Connealy Reflection #
Pearl Pammy of Conanga 194
S A V Final Answer 0035 #*
MAR Kahuna Precision 328 674 #
S A V Final Answer 0035 #*
S A V Blackcap May 5530 #+
Big Rok Milky Way 331 +
Big Rok Lucy 360

BW		205 Wt.		WWR		365 Wt.		YWR		
84		659		101		1069		101		
PRODUCTION EPDs				MATERNAL EPDs			\$ VALUES			
CED	BW	WW	YW	CEM	Milk	SEN	\$W	\$F	\$G	\$B
+2	+2.7	+59	+98	+8	+25	-13.52	+50.21	+54.21	NA	NA
CARCASS	CW	NA	NA	MARB	NA	REA	NA	FAT	NA	NA

- Projected wt on 3-9-19: 1582 lbs. Scrotal Measurement: 41.0 cm.
- Dam's Production: NR 3@107, YR 2@98. Calving Interval 3@345 days.
- Maternal grandsire, SAV Priority 7283 is a headliner, calving ease sire in the Genex/CRI stud. His curve-bending attributes mimic that of his Pathfinder sire and Pathfinder dam that is also the dam of the \$156,000 SAV Brand Name.



Big Rok High Noon 751

Born: 07/31/17 19354845 Freeze Brand: 751 Bull

A A R High Five 8563 #
Msar High Noon 9463
17641774 Msar Pride 103 #

Coleman Charlo 0256 #+*
Big Rok Polly 531
18427987 Big Rok Polly 747 +

A A R Image Maker 6538
A A R Donna 6514 #
Connealy Freightliner #
Msar Pride 1516
O C C Paxton 730P #*
Bohi Abigale 6014 +
B C C Bushwacker 41-93 #
Big Rok Polly 510 #

BW		205 Wt.		WWR		Actual Wt. 9-17-18		YWR		
72		708		100		1098		NA		
PRODUCTION EPDs				MATERNAL EPDs			\$ VALUES			
CED	BW	WW	YW	CEM	Milk	SEN	\$W	\$F	\$G	\$B
I+4	I+1.9	I+62	I+102	I+0	I+24	-14.00	+54.70	+59.48	NA	NA
CARCASS	CW	NA	NA	MARB	NA	REA	NA	FAT	NA	NA

- Projected wt on 3-9-19: 1526 lbs. Scrotal Measurement: 44.0 cm.
- Dam's Production: BR 1@100, NR 1@100.
- Born unassisted out of a first-calf heifer by the outcross maternal sire, Coleman Charlo 0256.
- His grandam has been a phenomenal producer posting a BR 8@100, NR 8@104 and YR 7@104.



Big Rok Black Cedar 761

Born: 08/01/17 19130106 Freeze Brand: 761 Bull

CH Quantum 6247 #
Cole Creek Black Cedar 46P #
14496765 Cole Creek Clova Juanada 67

Kesslers Frontman R001 #*
Big Rok Polly 319
17650408 Big Rok Polly 429 +

CH Quantum 3330 #
CH Blackbird 0136
A A R Windy Ridge 523 #
Cole Creek Clova Juanada 811
Connealy Front Page 0228 #
Kesslers Bell 0024
Twin Valley Precision E161 #*
Big Rok Polly 510 #

BW		205 Wt.		WWR		365 Wt.		YWR				
84		679		104		1079		102				
PRODUCTION EPDs				MATERNAL EPDs			\$ VALUES					
CED	BW	WW	YW	CEM	Milk	SEN	\$W	\$F	\$G	\$B		
+3	+1.9	+50	+86	+6	+24	-6.73	+43.49	+38.63	+22.77	+67.43		
CARCASS	CW	I+18	.05	MARB	I+.24	.05	REA	I+.36	.05	FAT	I+.031	.05

- Projected wt on 3-9-19: 1550 lbs. Scrotal Measurement: 39.0 cm.
- Dam's Production: NR 3@97, YR 3@96. Calving Interval 3@357 days.
- His sire, Cole Creek Black Cedar 46P is a masculine, deep, capacious bull with a reputation as a cow maker. He is also the sire of Cole Creek Cedar Ridge IV, a sales leader for Genex because of his combination of calving ease, convenience traits and Docility.

One of The Largest Selections of 18 Month Old Bulls In The Area



Big Rok Product 6120

Maternal brother to lot 763



Big Rok Unmistakable 422

\$4500 yearling selection of Al Olson, MN



Big Rok Platinum 762

Born: 08/01/17 19130082 Freeze Brand: 762 Bull

S AV Pioneer 7301 #
S AV Platinum 0010 #*
16687592 S AV Greystone Jannet 5345 #

Cole Creek Black Cedar 46P#
Big Rok Polly 455
18122538 Big Rok Polly 905

S AV Final Answer 0035 #*
S AV Blackbird 5297
S AV 8180 Traveler 004 #
S AV Jannet 7059
C H Quantum 6247 #
Cole Creek Clova Juanada 67
S AV Final Answer 0035 #*
Big Rok Polly 747 +



BW		205 Wt.		WWR		365 Wt.		YWR		
84		755		116		1081		103		
PRODUCTION EPDs				MATERNAL EPDs			\$ VALUES			
CED	BW	WW	YW	CEM	Milk	SEN	\$W	\$F	\$G	\$B
+3	+2.5	+81	+137	+11	+22	-16.28	+74.58	+98.19	+14.89	+134.40
CARCASS	CW			MARB			REA		FAT	
+57	.36			+.23	.31		+.42	.32	+.052	.27

- Projected wt on 3-9-19: 1634 lbs. Scrotal Measurement: 45.0 cm.
- Dam's Production: NR 2@115, YR 2@109. Calving Interval 2@361 days.
- His maternal sister posted astounding individual performance of BWR 99, WWR 114 and YWR 115 just prior to her enrollment in the Big Rok Angus breeding program.
- This EPD standout posted the #1 WW EPD, the #2 YW EPD, the #1 SW value in the sale offering, ranking in the top 1%, 2% and 3% respectively.



Big Rok Platinum 764

Born: 08/01/17 +19133872 Freeze Brand: 764 Bull

S AV Pioneer 7301 #
S AV Platinum 0010 #*
16687592 S AV Greystone Jannet 5345 #

B/R New Frontier 095#+
Big Rok Beauty 468 #
14771659 Big Rok Beauty 050 +

S AV Final Answer 0035 #*
S AV Blackbird 5297
S AV 8180 Traveler 004 #
S AV Jannet 7059
B/R New Design 036 #
White Fence Pride H1
V D A R Lucys Boy #+
V D A R Beauty 5042 +

BW		205 Wt.		WWR		365 Wt.		YWR		
76		644		92		1068		97		
PRODUCTION EPDs				MATERNAL EPDs			\$ VALUES			
CED	BW	WW	YW	CEM	Milk	SEN	\$W	\$F	\$G	\$B
+4	+1.5	+50	+91	+9	+22	-5.01	+41.89	+46.62	+25.45	+96.57
CARCASS	CW			MARB			REA		FAT	
+30	.05			+.33	.05		+.44	.05	+.041	.05

- Projected wt on 3-9-19: 1500 lbs. Scrotal Measurement: 41.5 cm.
- Dam's Production: NR 9@104, YR 7@106, IMF 7@101, Rump Fat 7@100.
- His Pathfinder dam has become a Big Rok embryo donor based on her natural production.
- Two maternal brothers sold in the 2018 sale to Mark Lewis, Hawley MN.
- Another maternal brother, Big Rok Unmistakable 422 was a \$4500 feature in the 2015 sale selected by Al Olson, Menahga, MN.



Big Rok Granite 763

Born: 08/01/17 19133908 Freeze Brand: 763 Bull

Connealy Consensus 7229 #*
Connealy Black Granite #*
17028963 Eura Elga of Conanga 9109 #

Prairie Pride Next Step 2036 #*
Big Rok Lucy 499
18118627 Big Rok Lucy 190

Connealy Consensus #*
Blue Lilly of Conanga 16
S A V Bismarck 5682 #+
Eura Cal of Conanga 56B
SydGen 928 Destination 5420 #+
Flying V Miss Pride 426
A A R Really Windy 1205 #
Big Rok Lucy 360

BW		205 Wt.		WWR		365 Wt.		YWR		
80		636		97		1108		105		
PRODUCTION EPDs				MATERNAL EPDs			\$ VALUES			
CED	BW	WW	YW	CEM	Milk	SEN	\$W	\$F	\$G	\$B
+12	+1.0	+56	+106	+12	+22	-13.17	+43.87	+71.38	+28.75	+124.13
CARCASS	CW			MARB			REA		FAT	
+39	.05			+.33	.05		+.53	.05	+.004	.05

- Projected wt on 3-9-19: 1630 lbs. Scrotal Measurement: 42.5 cm.
- Dam's Production: NR 2@96, YR 2@102, IMF 1@117, REA 1@105. Calving Interval 2@339 days.
- His sire, Connealy Black Granite was an \$80,000 feature of the 2012 Connealy Spring Bull Sale and the favored son of Consensus in the offering. He currently boasts a CED in the top 3% and a \$W in the top 2% of proven sires. Black Granite sired the \$37,500 top-selling bred heifer at the 2018 National Western Foundation Female Sale.
- He shares the #2 highest CED in the sale offering.
- Recommended for heifers or cows.



Big Rok Next Step 765

Born: 08/01/17 19130101 Freeze Brand: 765 Bull

SydGen 928 Destination 5420 #+
Prairie Pride Next Step 2036 #*
17367599 Flying V Miss Pride 426

Connealy Cavalry 1149 #*
Big Rok Lucy 384
17812850 Big Rok Lucy 023

B/R Destination 727-928 #
Shady Brook Entense 76D 29H +
Boyd New Day 8005 #+
Flying V Pride 1290
Connealy Consensus #*
Brista of Conanga 927T +
GDAR Game Day 449 #+
Big Rok Lucy 840

BW		205 Wt.		WWR		365 Wt.		YWR		
78		675		103		1078		102		
PRODUCTION EPDs				MATERNAL EPDs			\$ VALUES			
CED	BW	WW	YW	CEM	Milk	SEN	\$W	\$F	\$G	\$B
+10	+0.5	+60	+111	+12	+19	-11.55	+45.42	+77.96	+30.77	+147.14
CARCASS	CW			MARB			REA		FAT	
+50	.05			+.38	.05		+.54	.05	+.018	.05

- Projected wt on 3-9-19: 1644 lbs. Scrotal Measurement: 40.0 cm.
- Dam's Production: BR 3@96, NR 3@100, YR 2@97. Calving Interval 3@347 days.
- His maternal brother was the herd sire selection of Michael Olson, Fosston MN. His maternal sister was retained in the herd and her first calf is the heifer that sells as lot 7138 in this auction.
- He recorded the #5 highest CED EPD in the sale offering.
- Recommended for heifers or cows.

They Are More Mature and Ready To Work



Big Rok High Noon 772 • Lot 772



Big Rok Guinness 767

Born: 08/01/17 19158420 Freeze Brand: 767 Bull

Connealy Dublin 8223 #
Connealy Guinness #*
17031279 Panda of Conanga 3609

Prairie Pride Next Step 2036 #
Big Rok Beauty 4119
18118641 Big Rok Beauty 173

Connealy Full Freight
Black Rina of Conanga 69
EGL Target 1148
Pondera of Conanga 750
SydGen 928 Destination 5420 #+
Flying V Miss Pride 426
Big Rok Ole 450
Big Rok Beauty 948

BW		205 Wt.		WWR		365 Wt.		YWR		
80		652		100		1060		101		
PRODUCTION EPDs				MATERNAL EPDs			\$ VALUES			
CED	BW	WW	YW	CEM	Milk	SEN	\$W	\$F	\$G	\$B
+6	+1.6	+61	+113	+10	+27	-23.22	+51.80	+81.06	NA	NA
CARCASS	CW	NA	MARB	NA	REA	NA	FAT	NA	NA	NA

- Projected wt on 3-9-19: 1520 lbs. Scrotal Measurement: 37.0 cm.
- Dam's Production: BR 2@100, NR 2@100, YR 2@103. Calving Interval 2@344 days.
- His dam gained her admittance to the Big Rok breeding program with enviable individual performance of BWR 97, WWR 104 and YWR 111.
- His 2016 maternal sister is retained.
- He ranks in the top 25% for WW EPD and top 15% for YW EPD among non-parent bulls.



Big Rok Innovation 770

Born: 08/02/17 19133891 Freeze Brand: 770 Bull

Connealy Impression #*
MAR Innovation 251 #*
16983331 MAR Final Kahuna 856 #*

Basin Rainmaker 814Z#
Big Rok Enchantress 481
18118617 Big Rok Enchantress 277

Connealy Reflection #
Pearl Pammy of Conanga 194
S A V Final Answer 0035 #*
MAR Kahuna Precision 328 674 #
Basin Rainmaker D S 380U #
Basin Pamella 676X #
Connealy Thunder #
Big Rok Enchantress 928

BW		205 Wt.		WWR		365 Wt.		YWR		
76		664		102		1018		97		
PRODUCTION EPDs				MATERNAL EPDs			\$ VALUES			
CED	BW	WW	YW	CEM	Milk	SEN	\$W	\$F	\$G	\$B
+3	+1.0	+52	+93	+10	+29	-16.78	+50.11	+49.98	NA	NA
CARCASS	CW	NA	MARB	NA	REA	NA	FAT	NA	NA	NA

- Projected wt on 3-9-19: 1460 lbs. Scrotal Measurement: 42.0 cm.
- Dam's Production: NR 2@103, YR 2@99. Calving Interval 2@369 days.
- His 2016 maternal sister is retained.
- His grandam produced the \$4500 feature of the 2018 sale selected by Mark Lewis, Hawley IA.



Big Rok Unanimous 694

\$4500 maternal brother to the dam of lot 773



Big Rok High Noon 6112

\$4250 maternal brother to lot 773
Selected by Al Berquist, Detroit Lakes MN



Big Rok High Noon 772

Born: 08/02/17 +19130108 Freeze Brand: 772 Bull

A A R High Five 8563 #
Msar High Noon 9463
17641774 Msar Pride 103 #

Connealy Final Product #*
Big Rok Polly 301 #*
17650428 Big Rok Polly 634 #+

A A R Image Maker 6538
A A R Donna 6514 #
Connealy Freightliner #
Msar Pride 1516
Connealy Product 568 #*
Ebonista of Conanga 471 #
VDAR Right Now 2151 #*
Big Rok Polly 858 +



BW		205 Wt.		WWR		365 Wt.		YWR				
80		798		114		1166		106				
PRODUCTION EPDs				MATERNAL EPDs			\$ VALUES					
CED	BW	WW	YW	CEM	Milk	SEN	\$W	\$F	\$G	\$B		
+2	+1.4	+76	+110	+4	+16	-1.58	+71.16	+57.07	+23.71	+102.55		
CARCASS	CW	+35	.40	MARB	+34	.35	REA	+37	.35	FAT	+0.49	.31

- Projected wt on 3-9-19: 1684 lbs. Scrotal Measurement: 42.0 cm.
- Dam's Production: BR 3@100, NR 3@100, YR 2@100, IMF 1@100, REA 1@100, Rib Fat 1@100, Rump Fat 1@100.
- Flush brother sells as lot 741.
- This sale feature posted the #1 heaviest adj weaning wt, the #4 heaviest adj yearling wt in the sale and enjoys a WW EPD in the top 2% as well as a \$W value in the highest 5% among non-parent bulls.
- This High Noon son from the ET program is a maternal brother to the \$4800 selection of Mike and Ryan Hough, Barnsville MN in the 2016 sale.
- Retaining 1/3 interest.



Big Rok Innovation 773

Born: 08/03/17 19133892 Freeze Brand: 773 Bull

Connealy Impression #*
MAR Innovation 251 #*
16983331 MAR Final Kahuna 856 #*

Connealy Mentor 7374 #*
Big Rok Lucy 370
17817291 Big Rok Lucy 654

Connealy Reflection #
Pearl Pammy of Conanga 194
S A V Final Answer 0035 #*
MAR Kahuna Precision 328 674 #
G A R Retail Product #
Executa of Conanga 939 #
B C C Bushwacker 41-93 #
VDAR Lucy 9565 +

BW		205 Wt.		WWR		365 Wt.		YWR				
80		632		97		1053		100				
PRODUCTION EPDs				MATERNAL EPDs			\$ VALUES					
CED	BW	WW	YW	CEM	Milk	SEN	\$W	\$F	\$G	\$B		
+3	+2.3	+58	+104	+7	+22	-12.24	+44.38	+66.14	+36.75	+123.23		
CARCASS	CW	+35	.05	MARB	+47	.05	REA	+60	.05	FAT	+0.11	.05

- Projected wt on 3-9-19: 1508 lbs. Scrotal Measurement: 42.0 cm.
- Dam's Production: BR 3@100, NR 3@95, YR 2@101, IMF 1@101, Rib Fat 1@73, Rump Fat 1@100. Calving Interval 3@356 days.
- His maternal brother was the \$4250 herd sire selection of the 2018 sale offering by Al Berquist, Detroit Lakes MN.
- Maternal grandsire, Connealy Mentor 7374 is a Select Sires feature with balanced EPDs, great disposition and the reputation as a great female sire. His daughters at Connealy Angus are standouts in the herd.
- His grandam is still at work in this breeding program at 13 years of age. She records NR 9@101 and YR 8@102 on AHIR.

One of The Largest Selections of 18 Month Old Bulls In The Area



Big Rok Resource 777



Big Rok Next Step 5113

\$7000 maternal brother to Lot 780
Selected by Ryan Hough, MN



Big Rok Resource 777

Born: 08/03/17 19133901 Freeze Brand: 777 Bull

Rito 707 of Ideal 3407 7075 +
S A V Resource 1441 #+*
17016597 S A V Blackcap May 4136 *

Prairie Pride Next Step 2036 *
Big Rok Buena 4115
18118637 Big Rok Buena 797

R R Rito 707 #
Ideal 3407 of 1418 076
S A V 8180 Traveler 004 #
S A V May 2397 #+
SydGen 928 Destination 5420 #+
Flying V Miss Pride 426
Big Rok Titan 233
Big Rok Buena 353



BW		205 Wt.		WWR		365 Wt.		YWR		
82		644		99		1100		105		
PRODUCTION EPDs				MATERNAL EPDs			\$ VALUES			
CED	BW	WW	YW	CEM	Milk	\$EN	\$W	\$F	\$G	\$B
-1	+4.0	+75	+136	+4	+25	-15.88	+67.76	+104.73	+25.57	+145.03
CARCASS	CW			MARB			REA		FAT	
		+54	.41		+34	.36		+59	.36	+0.23 .32

- Projected wt on 3-9-19: 1658 lbs. Scrotal Measurement: 40.5 cm.
- Dam's Production: NR 1@99, YR 1@105.
- His dam posted individual performance featuring a WWR 104 and YWR. She is from the first calf crop sired by Prairie Pride Next Step 2036 who now has 113 daughters in production in 24 herds nation-wide.
- He posts the #3 highest YW EPD in the sale offering and ranks in the top 3% for WW, top 2% for YW and top 10% for both HP EPD and \$W value.
- Retaining 1/3 interest.



Big Rok Resource 780

Born: 08/04/17 19133907 Freeze Brand: 780 Bull

Rito 707 of Ideal 3407 7075 +
S A V Resource 1441 #+*
17016597 S A V Blackcap May 4136 *

Hoover Dam #*
Big Rok Forever Lady 266
17524677 Big Rok Forever Lady 949

R R Rito 707 #
Ideal 3407 of 1418 076
S A V 8180 Traveler 004 #
S A V May 2397 #+
SydGen C C & 7 #*
Erica of Ellston C124 #
Big Rok Benchmark 610
Big Rok Forever Lady 388

BW		205 Wt.		WWR		365 Wt.		YWR		
74		625		96		1041		99		
PRODUCTION EPDs				MATERNAL EPDs			\$ VALUES			
CED	BW	WW	YW	CEM	Milk	\$EN	\$W	\$F	\$G	\$B
+5	+1.4	+58	+107	+5	+22	-11.25	+48.23	+60.70	+25.53	+132.64
CARCASS	CW			MARB			REA		FAT	
		+52	.05		+28	.05		+78	.05	+1.015 .05

- Projected wt on 3-9-19: 1512 lbs. Scrotal Measurement: 40.0 cm.
- Dam's Production: BR 4@97, NR 4@102, YR 4@102, IMF 2@125, Rib Fat 2@99. Calving Interval 4@365 days.
- His maternal brother was the herd sire selection of AK Schbert, Brainerd MN in 2018, while another brother was the \$7000 second-top-selling bull in 2017 selected by Ryan Hough, Barnesville MN.
- He posted the #1 highest RE EPD in the sale offering.



Big Rok Guinness 781

Born: 08/04/17 19158421 Freeze Brand: 781 Bull

Connealy Dublin 8223 #
Connealy Guinness #*
17031279 Panda of Conanga 3609

Big Rok Black Cedar 269
Big Rok Polly 495
18118623 Big Rok Polly 750 +

Connealy Full Freight
Black Rina of Conanga 69
EGL Target 1148
Pondera of Conanga 750
Cole Creek Black Cedar 46P #
Big Rok Polly 025 +
B C C Bushwacker 41-93 #
Big Rok Polly 510 #

BW		205 Wt.		WWR		365 Wt.		YWR		
78		608		93		1022		97		
PRODUCTION EPDs				MATERNAL EPDs			\$ VALUES			
CED	BW	WW	YW	CEM	Milk	\$EN	\$W	\$F	\$G	\$B
+3	+2.0	+49	+87	+6	+30	-15.48	+46.51	+41.14	NA	NA
CARCASS	CW			MARB			REA		FAT	
		NA			NA			NA		NA

- Projected wt on 3-9-19: 1420 lbs. Scrotal Measurement: 39.0 cm.
- Dam's Production: BR 2@98, NR 2@101, YR 2@98. Calving Interval 2@339 days.
- His 2016 maternal sister by Prairie Pride Next Step 2036 was retained in the herd after she recorded a BWR 97 and WWR 108.
- His dam is a third-generation descendant of the beloved Pathfinder dam, Big Rok Polly 510.



Big Rok Innovation 783

Born: 08/05/17 19133890 Freeze Brand: 783 Bull

Connealy Impression #*
MAR Innovation 251 #*
16983331 MAR Final Kahuna 856 #*

Connealy In Focus 4925 #*
Big Rok Lucy 450
18121722 G K A F Lucy 7708 #

Connealy Reflection #
Pearl Pammy of Conanga 194
S A V Final Answer 0035 #*
MAR Kahuna Precision 328 674 #
Mytty In Focus #*
Black Cana of Conanga 206
Big Rok Titan 249
G K A F Lucy 384 #+

BW		205 Wt.		WWR		365 Wt.		YWR		
82		715		109		1025		97		
PRODUCTION EPDs				MATERNAL EPDs			\$ VALUES			
CED	BW	WW	YW	CEM	Milk	\$EN	\$W	\$F	\$G	\$B
+1	+2.8	+65	+103	+9	+27	-18.56	+58.57	+59.18	+35.77	+120.75
CARCASS	CW			MARB			REA		FAT	
		+35	.05		+48	.05		+53	.05	+1.000 .05

- Projected wt on 3-9-19: 1460 lbs. Scrotal Measurement: 41.0 cm.
- Dam's Production: NR 2@102, YR 2@99. Calving Interval 2@367 days.
- His dam posted individual performance featuring a WWR 107 and YWR 109 prior to her induction into the Big Rok breeding program.
- His maternal brother was the herd sire selection of Robert Brogle Jr, Pine River MN.

They Are More Mature and Ready To Work



Big Rok Resource 789



Big Rok Charlie 550
Reference Sire F and
\$6000 maternal brother to Lot 786
Selected by Al Olson, MN

784 **Big Rok Resource 784**
Born: 08/05/17 19133904 Freeze Brand: 784 Bull

Rito 707 of Ideal 3407 7075 +
S A V Resource 1441 #+*
17016597 S A V Blackcap May 4136 *

Kesslers Frontman R001 #*
Big Rok Gale 349
17812847 Big Rok Gale 0106

R R Rito 707 #
Ideal 3407 of 1418 076
S A V 8180 Traveler 004 #
S A V May 2397 #+
Connealy Front Page 0228 #
Kesslers Bell 0024
TO True Dimension 750
G K A F Gale 7745

BW	205 Wt.	WWR	365 Wt.	YWR							
78	663	102	1108	105							
PRODUCTION EPDs				MATERNAL EPDs				\$ VALUES			
CED	BW	WW	YW	CEM	Milk	\$EN	\$W	\$F	\$G	\$B	
+5	+1.9	+58	+107	+5	+24	-16.31	+46.26	+71.81	NA	NA	
CARCASS	CW	NA	MARB	NA	REA	NA	FAT	NA	NA	NA	

- Projected wt on 3-9-19: 1656 lbs. Scrotal Measurement: 42.0 cm.
- Dam's Production: NR 2@103, YR 2@106. Calving Interval 3@361 days.
- Two maternal sisters are retained in the herd.
- The Gale family was pioneered in the McCumber program in ND and propagated successfully at Krauth Angus Farm in IA.

789 **Big Rok Resource 789**
Born: 08/06/17 19133926 Freeze Brand: 789 Bull

Rito 707 of Ideal 3407 7075 +
S A V Resource 1441 #+*
17016597 S A V Blackcap May 4136 *

Big Rok Benchmark 610
Big Rok Forever Lady 949
16433626 Big Rok Forever Lady 388

R R Rito 707 #
Ideal 3407 of 1418 076
S A V 8180 Traveler 004 #
S A V May 2397 #+
B C C Bushwacker 41-93 #
Big Rok Polly 968 +
B/R New Frontier 095 #+
Big Rok Forever Lady 977

BW	205 Wt.	WWR	365 Wt.	YWR								
88	666	102	1082	103								
PRODUCTION EPDs				MATERNAL EPDs				\$ VALUES				
CED	BW	WW	YW	CEM	Milk	\$EN	\$W	\$F	\$G	\$B		
+0	+3.6	+63	+113	+2	+20	-10.80	+44.39	+69.89	+17.71	+114.46		
CARCASS	CW	I+44	.05	MARB	I+15	.05	REA	I+63	.05	FAT	I+0.20	.05

- Projected wt on 3-9-19: 1582 lbs. Scrotal Measurement: 40.5 cm.
- Dam's Production: BR 7@99, NR 7@97, YR 6@100, REA 2@103, Rib Fat 2@94, Rump Fat 2@81. Calving Interval 7@361 days.
- His maternal brothers include two herd sires that now both serve Mark Lewis, Hawley MN.
- His maternal sister by Hoover Dam is retained in the herd where she currently posts BWR 4@97, NR 4@102, YR 4@102, and IMF 2@125. She produced the powerful Resource son that sells as lot 780.

786 **Big Rok Platinum 786**
Born: 08/05/17 19133870 Freeze Brand: 786 Bull

S A V Pioneer 7301 #
S A V Platinum 0010 #*
16687592 S A V Greystone Jannet 5345 #

Sitz Upward 10379 #
Big Rok Polly 230
17341509 Big Rok Polly 520

S A V Final Answer 0035 #*
S A V Blackbird 5297
S A V 8180 Traveler 004 #
S A V Jannet 7059
Sitz Upward 307R #
Sitz Everelda Entense 1947
B C C Bushwacker 41-93 #
Big Rok Polly 150 #

BW	205 Wt.	WWR	365 Wt.	YWR								
84	696	107	1075	102								
PRODUCTION EPDs				MATERNAL EPDs				\$ VALUES				
CED	BW	WW	YW	CEM	Milk	\$EN	\$W	\$F	\$G	\$B		
+5	+1.4	+60	+102	+10	+27	-16.26	+57.78	+53.70	+10.37	+90.58		
CARCASS	CW	I+36	.05	MARB	I+12	.05	REA	I+34	.05	FAT	I+0.62	.05

- Projected wt on 3-9-19: 1620 lbs. Scrotal Measurement: 43.5 cm.
- Dam's Production: BR 4@100, NR 4@105, YR 4@102, REA 1@113. Calving Interval 4@357 days.
- His maternal brother, Big Rok Charlie 550 is a former Big Rok Angus herd sire shown in this catalog as reference sire F. He was selected by Al Olson, Menahga MN at \$6000 from the 2017 sale offering.
- Two maternal sisters are retained in the herd.

792 **Big Rok Next Step 792**
Born: 08/07/17 19130100 Freeze Brand: 792 Bull

SydGen 928 Destination 5420 #+
Prairie Pride Next Step 2036 #*
17367599 Flying V Miss Pride 426

Big Rok Black Cedar 269
Big Rok Polly K4113
18118664 Big Rok Polly K245

B/R Destination 727-928 #
Shady Brook Entense 76D 29H +
Boyd New Day 8005 #+
Flying V Pride 1290
Cole Creek Black Cedar 46P #
Big Rok Polly 025 +
Sitz Upward 10379 #*
Big Rok Beauty 833 +

BW	205 Wt.	WWR	365 Wt.	YWR								
82	693	106	1072	102								
PRODUCTION EPDs				MATERNAL EPDs				\$ VALUES				
CED	BW	WW	YW	CEM	Milk	\$EN	\$W	\$F	\$G	\$B		
+6	+1.9	+59	+111	+9	+21	-14.17	+42.99	+78.70	+24.90	+123.75		
CARCASS	CW	I+40	.05	MARB	I+27	.05	REA	I+36	.05	FAT	I-0.13	.05

- Projected wt on 3-9-19: 1500 lbs. Scrotal Measurement: 42.0 cm.
- Dam's Production: NR 2@98, YR 2@98, IMF 1@126, Rib Fat 1@64, Rump Fat 1@88. Calving Interval 2@367 days.
- Excellent individual performance is complimented with a YW EPD in the top 20% of non-parent bulls.

One of The Largest Selections of 18 Month Old Bulls In The Area



Big Rok Extra 549
\$5500 maternal brother to Lot 7100
Selected by Mark Lewis, MN



Big Rok Next Step 5104
\$4000 maternal brother to Lot 7105
Selected by Mark Lewis, MN

Big Rok Next Step 7100 • Lot 7100



Big Rok Guinness 797

Born: 08/10/17 19134995 Freeze Brand: 797 Bull

Connealy Dublin 8223 #
Connealy Guinness #*
17031279 Panda of Conanga 3609

Cole Creek Black Cedar 46P#
Big Rok Polly 471
18122537 Big Rok Polly 097

Connealy Full Freight
Black Rina of Conanga 69
EGL Target 1148
Ponderra of Conanga 750
C H Quantum 6247 #
Cole Creek Clova Juanada 67
Big Rok Benchmark 807
Big Rok Polly 803 #

BW		205 Wt.		WWR		365 Wt.		YWR		
88		636		97		1066		101		
PRODUCTION EPDs				MATERNAL EPDs			\$ VALUES			
CED	BW	WW	YW	CEM	Milk	\$EN	\$W	\$F	\$G	\$B
+0	+3.0	+59	+103	+5	+30	-22.76	+51.31	+63.53	NA	NA
CARCASS	CW	NA	MARB	NA	REA	NA	FAT	NA	NA	NA

- Projected wt on 3-9-19: 1574 lbs. Scrotal Measurement: 42.0 cm.
- Dam's Production: NR 2@107, YR 2@105. Calving Interval 2@372 days.
- His dam bested her contemporaries with individual performance of WWR 117 and YWR 106 among 58 contemporaries.
- His 2016 maternal sister posted a BWR 94, WWR 117, YWR 108 and was systematically retained in the breeding program.



Big Rok Next Step 7100

Born: 08/11/17 19130104 Freeze Brand: 7100 Bull

SydGen 928 Destination 5420 #+
Prairie Pride Next Step 2036 *
17367599 Flying V Miss Pride 426

Big Rok Zephyr 903
Big Rok Heather Lass 193
17204480 Big Rok Heather Lass 944

B/R Destination 727-928 #
Shady Brook Entense 76D 29H +
Boyd New Day 8005 #+
Flying V Pride 1290
S A V Final Answer 0035 #*
Big Rok Heather Lass 771
Wulffs Ext 6106 #+
Big Rok Heather Lass 236



BW		205 Wt.		WWR		365 Wt.		YWR				
76		710		109		1174		112				
PRODUCTION EPDs				MATERNAL EPDs			\$ VALUES					
CED	BW	WW	YW	CEM	Milk	\$EN	\$W	\$F	\$G	\$B		
+7	+1.2	+62	+116	+6	+24	-9.87	+60.76	+73.77	+20.26	+110.29		
CARCASS	CW	+41	.38	MARB	+12	.32	REA	+56	.33	FAT	-0.40	.29

- Projected wt on 3-9-19: 1744 lbs. Scrotal Measurement: 41.0 cm.
- Dam's Production: NR 4@104, YR 4@106, IMF 2@128, REA 2@120.
- His dam recorded individual performance that bested her contemporaries with a BWR 101, WWR 106 and YWR 105.
- Mark Lewis, Hawley MN and Merlin Olson, Lengby MN each turned out maternal brothers to this bull.
- He recorded the #3 heaviest adj yearling wt in the sale offering.
- Recommended for heifers or cows.
- Retaining 1/3 interest.



Big Rok High Noon 7101

Born: 08/12/17 19130095 Freeze Brand: 7101 Bull

A A R High Five 8563 #
Msar High Noon 9463
17641774 Msar Pride 103 #

Big Rok Ole 823 +
Big Rok Lucy 0121
16763411 Big Rok Lucy 604

A A R Image Maker 6538
A A R Donna 6514 #
Connealy Freightliner #
Msar Pride 1516
Big Rok Ole 450
Big Rok Polly 510 #
S A V Final Answer 0035 #*
Big Rok Lucy 4024

BW		205 Wt.		WWR		365 Wt.		YWR				
76		644		99		1049		100				
PRODUCTION EPDs				MATERNAL EPDs			\$ VALUES					
CED	BW	WW	YW	CEM	Milk	\$EN	\$W	\$F	\$G	\$B		
+6	+0.4	+52	+83	+6	+22	-2.71	+49.10	+31.83	+25.39	+92.45		
CARCASS	CW	I+29	.05	MARB	I+.33	.05	REA	I+.30	.05	FAT	I+.028	.05

- Projected wt on 3-9-19: 1450 lbs. Scrotal Measurement: 41.5 cm.
- Dam's Production: BR 6@99, NR 6@97, YR 4@96. Calving Interval 6@364 days.
- Maternal brothers were herd sire selections for Tim Erickson, Pelican Rapids MN and John Hart, Menahga MN. Two maternal sisters have been retained in the herd.
- Recommended for heifers or cows.



Big Rok Solid 7105

Born: 08/13/17 19130091 Freeze Brand: 7105 Bull

Basin Excitement #*
Big Rok Solid 573
18427917 Big Rok Polly 228

Big Rok Ole 450
Big Rok Beauty 286 #
17524676 Big Rok Beauty 948

Basin Expedition R156 +
Basin Lady S532 AK
Kesslers Frontman R001 #*
Big Rok Polly 029 +
G D A R Traveler 044 #
Big Rok Heather Lass 152
TO 1916 Bandolier 633
Big Rok Beauty 440 +

BW		205 Wt.		WWR		365 Wt.		YWR				
80		705		108		1151		109				
PRODUCTION EPDs				MATERNAL EPDs			\$ VALUES					
CED	BW	WW	YW	CEM	Milk	\$EN	\$W	\$F	\$G	\$B		
+9	+0.1	+58	+105	+9	+31	-25.10	+56.93	+68.02	+19.39	+106.29		
CARCASS	CW	I+35	.05	MARB	I+.24	.05	REA	I+.25	.05	FAT	I+.029	.05

- Projected wt on 3-9-19: 1646 lbs. Scrotal Measurement: 41.0 cm.
- Dam's Production: NR 3@107, YR 3@105, IMF 2@103, Rib Fat 2@90, Rump Fat 2@100. Calving Interval 4@352 days.
- His dam earned her entrance into the Big Rok breeding program with a BWR 96, WWR 103 and YWR 101.
- His dam is a granddaughter of the foundation, VDAR Beauty 610 cow that anchored the Big Rak ET program for many years.
- Mark Lewis, Hawley MN secured his maternal brother in 2018 while Randy Rosentreter, Vergus MN chose one from the 2016 offering.
- Recommended for heifers or cows.

They Are More Mature and Ready To Work



Big Rok High Noon 6106

Maternal brother to Lot 7106
Selected by Mark Bratland, MN



Big Rok XL 685

Maternal brother to lot 7107
Selected by AK Schubert, MN

Big Rok High Noon 7107 • Lot 7107



Big Rok High Noon 7106

Born: 08/14/17 19130087 Freeze Brand: 7106 Bull

A A R High Five 8563 #
Msar High Noon 9463
17641774 Msar Pride 103 #

Big Rok Benchmark 610
Big Rok Beauty 162
17041627 Big Rok Beauty 552 #

A A R Image Maker 6538
A A R Donna 6514 #
Connealy Freightliner #
Msar Pride 1516
B C C Bushwacker 41-93 #
Big Rok Polly 968 +
Connealy Lead On #
Big Rok Beauty 348 #



BW		205 Wt.		WWR		365 Wt.		YWR				
90		739		113		1134		107				
PRODUCTION EPDs				MATERNAL EPDs			\$ VALUES					
CED	BW	WW	YW	CEM	Milk	SEN	\$W	\$F	\$G	\$B		
+1	+4.0	+79	+127	+3	+16	-7.62	+60.92	+90.92	+19.23	+141.36		
CARCASS	CW	+54	.39	MARB	+23	.34	REA	+56	.34	FAT	+029	.30

- Projected wt on 3-9-19: 1650 lbs. Scrotal Measurement: 44.0 cm.
- Dam's Production: NR 4@103, YR 3@102, IMF 1@115, Rump Fat 1@81.
- His maternal brothers include the herd sire selections of Mark Bratland, Greenbush MN and Chad Klinkhammer, Lengby MN from the 2018 and 2015 sales respectively.
- He posts enviable EPD values ranking in the top 2% for WW, top 4% for YW and top 20% for SW index among non-parent bulls.



Big Rok High Noon 7107

Born: 08/15/17 19130096 Freeze Brand: 7107 Bull

A A R High Five 8563 #
Msar High Noon 9463
17641774 Msar Pride 103 #

Big Rok Benchmark 807
Big Rok Heather Lass 0114
16763423 Big Rok Heather Lass 893

A A R Image Maker 6538
A A R Donna 6514 #
Connealy Freightliner #
Msar Pride 1516
Big Rok Benchmark 610
Big Rok Heather Lass 236
Big Rok Titan 233
Big Rok Heather Lass 718 +



BW		205 Wt.		WWR		365 Wt.		YWR				
92		773		118		1218		115				
PRODUCTION EPDs				MATERNAL EPDs			\$ VALUES					
CED	BW	WW	YW	CEM	Milk	SEN	\$W	\$F	\$G	\$B		
-2	+3.4	+79	+127	-2	+22	-12.96	+71.81	+99.08	+22.19	+155.48		
CARCASS	CW	+56	.37	MARB	+23	.32	REA	+68	.32	FAT	+005	.28

- Projected wt on 3-9-19: 1670 lbs. Scrotal Measurement: 41.5 cm.
- Dam's Production: NR 6@108, YR 5@107, IMF 3@105, REA 3@108. Calving Interval 6@363 days.
- His maternal brother recorded the #1 205 day wt and the #1 365 day wt among the long yearling bulls in the 2016 offering and was selected by Jason & Kelli Langerud, Hawley MN. Other brothers include the herd sire selections of Mark Lewis, Hawley MN in 2017 and AK Schubert, Brainerd MN in 2018.
- This performance over achiever recorded the #3 heaviest adj weaning wt, the #1 heaviest adj yearling wt and posts the #1 \$B index in the sale offering.



Big Rok High Noon 7115

Born: 08/19/17 19130081 Freeze Brand: 7115 Bull

A A R High Five 8563 #
Msar High Noon 9463
17641774 Msar Pride 103 #

Big Rok Lucy 654
15448736 V DAR Lucy 9565 +

A A R Image Maker 6538
A A R Donna 6514 #
Connealy Freightliner #
Msar Pride 1516
Paramont Ambush 2172 #
R C Anita T Bando 918903
TC Divident 963 #
V D A R Lucy 3181

BW		205 Wt.		WWR		365 Wt.		YWR				
80		671		103		1018		97				
PRODUCTION EPDs				MATERNAL EPDs			\$ VALUES					
CED	BW	WW	YW	CEM	Milk	SEN	\$W	\$F	\$G	\$B		
+2	+1.5	+59	+93	+2	+20	-4.43	+51.69	+49.00	+23.72	+107.91		
CARCASS	CW	+34	.05	MARB	+26	.05	REA	+43	.05	FAT	+013	.05

- Projected wt on 3-9-19: 1400 lbs. Scrotal Measurement: 43.0 cm.
- Dam's Production: BR 9@100, NR 9@101, YR 8@102, REA 3@104, Rump Fat 3@100.
- Maternal brothers include the herd sire selections of Loren Uhlrig, Erhard MN; Jason & Kelli Langerud, Hawley MN; Stephen Grimsley, Bagley MN and Mike Wagner, Browerville MN.
- An extra good High Noon son out of a 13-year-old Bushwacker daughter.



Big Rok High Noon 7125

Born: 08/22/17 19130088 Freeze Brand: 7125 Bull

A A R High Five 8563 #
Msar High Noon 9463
17641774 Msar Pride 103 #

Big Rok Ole 450
Big Rok Polly 825 +
16134447 Big Rok Polly 510 #

A A R Image Maker 6538
A A R Donna 6514 #
Connealy Freightliner #
Msar Pride 1516
G D A R Traveler 044 #
Big Rok Heather Lass 152
V D A R New Trend 36
Bigrok Polly 26

BW		205 Wt.		WWR		365 Wt.		YWR				
84		709		109		1128		107				
PRODUCTION EPDs				MATERNAL EPDs			\$ VALUES					
CED	BW	WW	YW	CEM	Milk	SEN	\$W	\$F	\$G	\$B		
+2	+2.8	+62	+103	+3	+29	-19.22	+57.89	+63.71	+30.72	+130.27		
CARCASS	CW	+41	.05	MARB	+44	.05	REA	+44	.05	FAT	+021	.05

- Projected wt on 3-9-19: 1610 lbs. Scrotal Measurement: 44.5 cm.
- Dam's Production: NR 8@108, YR 7@105, REA 2@130, Rib Fat 2@86, Rump Fat 2@82.
- Maternal brothers include the \$5000 herd sire acquisition of Mark Lewis in 2018, the \$5000 choice of Jeff & Brenda Malloy, Brainerd MN in 2017 and a Game Day son serving the herd of Clarence Parker, Pequot Lakes MN.
- Four maternal sisters have been returned to the herd including the Pathfinder dam of lot 719.

One of The Largest Selections of 18 Month Old Bulls In The Area



Big Rok Next Step 598
\$5000 maternal brother to Lot 7125
Selected by Jeff & Brenda Malloy, MN



Basin Excitement
Maternal grandsire of Lots 7129 & 7132

Big Rok Charlie 7129 • Lot 7129



Big Rok High Noon 7126

7126 Born: 08/22/17 19130103 Freeze Brand: 7126 Bull

A A R High Five 8563 #
Msar High Noon 9463
17641774 Msar Pride 103 #

Big Rok Cedar Lad 182
Big Rok Heather Lass 3136
17812828 Big Rok Heather Lass 9121

A A R Image Maker 6538
A A R Donna 6514 #
Connealy Freightliner #
Msar Pride 1516
Cole Creek Black Cedar 46P #
Big Rok Lucy 678
Big Rok Ole 450
Big Rok Heather Lass 718 +

BW		205 Wt.		WWR		365 Wt.		YWR				
80		659		101		1073		102				
PRODUCTION EPDs				MATERNAL EPDs				\$ VALUES				
CED	BW	WW	YW	CEM	Milk	\$EN	\$W	\$F	\$G	\$B		
+6	+0.7	+59	+101	+6	+21	-9.53	+50.27	+59.78	+27.06	+108.05		
CARCASS	CW	I+33	.05	MARB	I+.37	.05	REA	I+.36	.05	FAT	I+.030	.05

- Projected wt on 3-9-19: 1520 lbs. Scrotal Measurement: 44.0 cm.
- Dam's Production: NR 3@97, YR 3@102, REA 1@103, Rib Fat 1@90. Calving Interval 3@366 days.
- His maternal brother by Next Step was chosen from the 2017 sale offering by Calvin Padetzke, Sebeka MN.
- **Recommended for heifers or cows.**



Big Rok Charlie 7132

7132 Born: 08/25/17 19130099 Freeze Brand: 7132 Bull

Coleman Charlo 0256 #+*
Big Rok Charlie 550
18427983 Big Rok Polly 230

Basin Excitement#*
Big Rok Lucy 512
18427916 Big Rok Lucy 205

O C C Paxton 730P #*
Bohi Abigale 6014 +
Sitz Upward 10379 *
Big Rok Polly 520
Basin Expedition R156 +
Basin Lady S532 AK
Connealy Final Product #*
Big Rok Lucy 824

BW		205 Wt.		WWR		365 Wt.		YWR			
74		708		108		1097		104			
PRODUCTION EPDs				MATERNAL EPDs				\$ VALUES			
CED	BW	WW	YW	CEM	Milk	\$EN	\$W	\$F	\$G	\$B	
+7	+1.1	+61	+106	+7	+25	-17.21	+54.27	+67.72	NA	NA	
CARCASS	CW	NA	NA	MARB	NA	REA	NA	FAT	NA	NA	

- Projected wt on 3-9-19: 1530 lbs. Scrotal Measurement: 39.0 cm.
- Dam's Production: BR 1@100, NR 1@108, YR 1@104.
- This high-performance bull was born unassisted out of a first-calf heifer by ABS featured Connealy Final Product.
- Maternal grandsire, Basin Excitement, is featured at Genex and in the Hoover Angus bull battery. He posts an incredible BW to YW EPD spread of +0 to +120. Excitement earned Pathfinder status again this year with 17% of his eligible daughters achieving Pathfinder recognition.
- **Recommended for heifers or cows.**



Big Rok Charlie 7129

7129 Born: 08/23/17 19130098 Freeze Brand: 7129 Bull

Coleman Charlo 0256 #+*
Big Rok Charlie 550
18427983 Big Rok Polly 230

Basin Excitement#*
Big Rok Lucy 526
18427923 Big Rok Lucy 042

O C C Paxton 730P #*
Bohi Abigale 6014 +
Sitz Upward 10379 *
Big Rok Polly 520
Basin Expedition R156 +
Basin Lady S532 AK
S A V Final Answer 0035 #*
Big Rok Lucy 688

BW		205 Wt.		WWR		365 Wt.		YWR				
76		755		116		1200		114				
PRODUCTION EPDs				MATERNAL EPDs				\$ VALUES				
CED	BW	WW	YW	CEM	Milk	\$EN	\$W	\$F	\$G	\$B		
+3	+2.3	+78	+139	+9	+23	-15.13	+74.27	+102.31	+7.83	+129.04		
CARCASS	CW	+59	.40	MARB	+0.2	.34	REA	+6.0	.34	FAT	+0.18	.31

- Projected wt on 3-9-19: 1642 lbs. Scrotal Measurement: 43.0 cm.
- Dam's Production: NR 1@116, YR 1@114.
- Born unassisted from a first-calf heifer that dominated in individual performance posting a BWR 93 and WWR 117.
- He recorded the #2 heaviest adj yearling wt and posts the #1 highest YW EPD in the sale offering.
- He ranks in the top 2% for WW, top 1 % for YW and top 3% for \$W among non-parent bulls.



Big Rok High Noon 7135

7135 Born: 08/28/17 19354846 Freeze Brand: 7135 Bull

A A R High Five 8563 #
Msar High Noon 9463
17641774 Msar Pride 103 #

Big Rok Zephyr 903
Big Rok Polly 1126
17204462 Big Rok Polly 825 +

A A R Image Maker 6538
A A R Donna 6514 #
Connealy Freightliner #
Msar Pride 1516
S A V Final Answer 0035 #*
Big Rok Heather Lass 771
Big Rok Ole 450
Big Rok Polly 510 #

BW		205 Wt.		WWR		Actual Wt. 9-17-18		YWR				
82		607		100		1044		NA				
PRODUCTION EPDs				MATERNAL EPDs				\$ VALUES				
CED	BW	WW	YW	CEM	Milk	\$EN	\$W	\$F	\$G	\$B		
+3	+2.1	+65	+108	+4	+26	-19.50	+57.70	+68.57	+28.69	+115.70		
CARCASS	CW	I+35	.05	MARB	I+.40	.05	REA	I+.39	.05	FAT	I+.027	.05

- Projected wt on 3-9-19: 1444 lbs. Scrotal Measurement: 43.0 cm.
- Dam's Production: NR 5@103, YR 4@105. Calving Interval 5@371 days.
- His dam demonstrated her curve-bending attributes with individual performance of a BWR 96, WWR 110 and YWR 108.
- Two maternal brothers have landed in the Mark Lewis breeding program at Hawley MN.
- His 2016 maternal sister posted a WWR 115, YWR 112 and was systematically returned to the breeding herd.

They Are More Mature and Ready To Work



Big Rok Solid 7137



Big Rok High Def 212

\$5250 maternal brother to Lot 7137
Selected by Ridl Feedlot, Bowman ND



Big Rok Solid 7137

Born: 08/29/17 19130090 Freeze Brand: 7137 Bull

Basin Excitement #*
Big Rok Solid 573
18427917 Big Rok Polly 228

Big Rok Benchmark 610
Big Rok Polly 917 #
16433765 Big Rok Polly 858 +

Basin Expedition R156 +
Basin Lady S532 AK
Kesslers Frontman R001 #*
Big Rok Polly 029 +
B C C Bushwacker 41-93 #
Big Rok Polly 968 +
G D A R Traveler 71 #
Big Rok Polly 503 #+



BW		205 Wt.		WWR		365 Wt.		YWR				
80		659		101		1037		98				
PRODUCTION EPDs				MATERNAL EPDs			\$ VALUES					
CED	BW	WW	YW	CEM	Milk	SEN	\$W	\$F	\$G	\$B		
+13	-1.1	+48	+78	+8	+26	+1.36	+58.43	+17.03	+18.44	+56.46		
CARCASS	CW	+20	.38	MARB	+20	.33	REA	+22	.33	FAT	+037	.29

- Projected wt on 3-9-19: 1504 lbs. Scrotal Measurement: 40.0 cm.
- Dam's Production: BR 7@99, NR 7@110, YR 5@100, IMF 2@121, REA 2@115.
- His Pathfinder dam has been used with success in the Big Rok ET program and produced herd sires for Mike Fortier, Waubun MN and WR Bar Ranch, Pequot Lakes MN, as well as the \$5250 second-top selling bull of the 2016 sale chosen by Ridl Feedlot, Bowman ND.
- He has 5 maternal sisters in the herd including the dam of lot 734 in this offering that posts BR 5@100, NR 5@104 and YR 3@108.
- This calving ease prospect posts the #1 highest CED and the #1 lowest BW EPD in the sale offering.
- **Recommended for heifers or cows.**



Big Rok High Noon 7146

Born: 09/06/17 19130094 Freeze Brand: 7146 Bull

A A R High Five 8563 #
Msar High Noon 9463
17641774 Msar Pride 103 #

Connealy Final Product #*
Big Rok Forever Lady 3103
17812856 Big Rok Forever Lady 555

A A R Image Maker 6538
A A R Donna 6514 #
Connealy Freightliner #
Msar Pride 1516
Connealy Product 568 *
Ebonista of Conanga 471 #
G D A R Traveler 044 #
Big Rok Forever Lady 977

BW		205 Wt.		WWR		365 Wt.		YWR							
82		756		116		1159		110							
PRODUCTION EPDs				MATERNAL EPDs			\$ VALUES								
CED	BW	WW	YW	CEM	Milk	SEN	\$W	\$F	\$G	\$B					
+5	+0.9	+66	+109	+5	+22	-14.56	+57.94	+69.72	+26.66	+109.72					
CARCASS	CW	+33	.05	MARB	1+	.33	.05	REA	1+	.49	.05	FAT	1+	.028	.05

- Projected wt on 3-9-19: 1616 lbs. Scrotal Measurement: 41.5 cm.
- Dam's Production: BR 2@99, NR 2@109, YR 2@104, REA 1@113, Rump Fat 1@69.
- Tim Erickson, Pelican Rapids MN selected his maternal bother from the 2018 offering.
- He posted the #5 heaviest adj weaning wt and the #6 heaviest adj yearling wt in the sale offering.
- **Recommended for heifers or cows.**



Big Rok High Noon 7146



One of The Largest Selections of 18 Month Old Bulls In The Area



Big Rok High Noon 7148

Born: 09/13/17 19130084 Freeze Brand: 7148 Bull

A A R High Five 8563 #
Msar High Noon 9463
 17641774 Msar Pride 103 #

GDAR Game Day 449#+
Big Rok NT Polly 1124
 17041637 Big Rok Polly 971

A A R Image Maker 6538
 A A R Donna 6514 #
 Connealy Freightliner #
 Msar Pride 1516
 Boyd New Day 8005 #+
 G D A R Miss Wix 474 #
 Sitz Upward 307R #
 Big Rok Polly 595

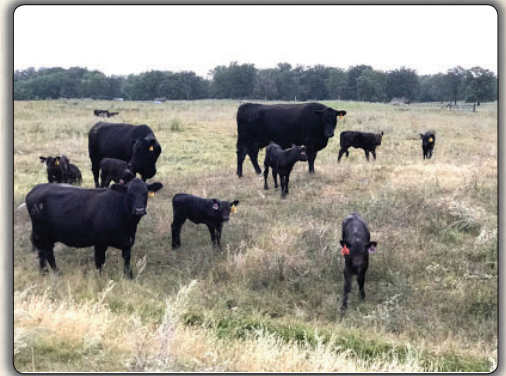
BW		205 Wt.		WWR		365 Wt.		YWR				
84		761		117		1116		106				
PRODUCTION EPDs				MATERNAL EPDs			\$ VALUES					
CED	BW	WW	YW	CEM	Milk	\$EN	\$W	\$F	\$G	\$B		
+3	+1.8	+67	+107	+3	+25	-17.67	+61.27	+65.22	+28.60	+120.77		
CARCASS	CW	I+38	.05	MARB	I+.39	.05	REA	I+.50	.05	FAT	I+.031	.05

- Projected wt on 3-9-19: 1500 lbs. Scrotal Measurement: 40.5 cm.
- Dam's Production: NR 5@106, YR 4@102, REA 1@103, Rib Fat 1@82. Calving Interval 5@375 days.
- His full brother was the herd sire selection of Gary & Lisa Marschall, Menahga MN in 2018 and a maternal brother was chosen from the 2015 sale offering by Ron Semmler, Akeley MN. A maternal sister went to David Irlbeck, Eagle Bend MN and another is retained in the herd.
- He recorded the #4 heaviest adj weaning wt in the sale offering.
- Ranks in the top 10% for WW EPD and the top 20% for \$W value among non-parent bulls.



Big Rok Emblazon 391

Maternal brother to Lot 7148
 Selected by Ron Semmler, MN



Big Rok Long Yearling Heifers



SAV Platinum 0010

Sire of Lot 722



Coleman Rainmaker 356

Sire of Lot 724



Big Rok Unmistakable 422

\$4500 maternal brother to Lot 722 and yearling selection of Al Olson, MN



Big Rok Insight 629

Maternal brother to Lot 732 Selected by Aaron Baldwin, MN



Big Rok Beauty 722

Born: 07/27/17 +19364785 Freeze Brand: 722 Cow

S A V Pioneer 7301 #
S A V Platinum 0010 #*
16687592 S A V Greystone Jannet 5345 #

B/R New Frontier 095#+
Big Rok Beauty 468 #
14771659 Big Rok Beauty 050 +

S A V Final Answer 0035 #*
S A V Blackbird 5297
S A V 8180 Traveler 004 #
S A V Jannet 7059
B/R New Design 036 #
White Fence Pride H1
V D A R Lucys Boy #+
V D A R Beauty 5042 +

BW		205 Wt.		WWR		365 Wt.		YWR			
82		583		100		834		100			
PRODUCTION EPDs				MATERNAL EPDs				\$ VALUES			
CEM	BW	WW	YW	CEM	Milk	\$EN	\$W	\$F	\$G	\$B	
+1.4	+2.3	+5.3	+9.5	+1.9	+2.2	-2.37	+46.57	+51.85	+25.45	+97.63	
CARCASS	CW	NA	MARB	RE A	FAT	NA	NA	NA	NA	NA	
+1.4	+2.3	+5.3	+9.5	+1.9	+2.2	-2.37	+46.57	+51.85	+25.45	+97.63	

- Dam's Production: NR 9@104, YR 7@106, IMF 7@101, Rump Fat 7@100.
- Her flush brother sells as lot 764.
- Her Pathfinder donor dam has become a Big Rok embryo donor based on her natural production.
- Three maternal brothers have sold to Mark Lewis, Hawley MN another to Michael Hervey, Wheaton MN and still another maternal brother, Big Rok Unmistakable 422 was a \$4500 feature in the 2015 sale selected by Al Olson and has been used with enthusiasm in the Big Rok herd.



Big Rok Polly 729

Born: 07/29/17 19134317 Freeze Brand: 729 Cow

A A R High Five 8563 #
Msar High Noon 9463
17641774 Msar Pride 103 #

Connealy Cavalry 1149#*
Big Rok Polly 388
17812860 Big Rok Polly 716

A A R Image Maker 6538
A A R Donna 6514 #
Connealy Freightliner #
Msar Pride 1516
Connealy Consensus #*
Brista of Conanga 927T +
CAR Duke 104 #
Big Rok Polly 518

BW		205 Wt.		WWR		365 Wt.		YWR			
80		611		109		894		107			
PRODUCTION EPDs				MATERNAL EPDs				\$ VALUES			
CEM	BW	WW	YW	CEM	Milk	\$EN	\$W	\$F	\$G	\$B	
+1	+2.8	+7.4	+12.0	+6	+20	-17.09	+57.52	+84.84	NA	NA	
CARCASS	CW	NA	MARB	RE A	FAT	NA	NA	NA	NA	NA	
+1	+2.8	+7.4	+12.0	+6	+20	-17.09	+57.52	+84.84	NA	NA	

- Dam's Production: BR 3@97, NR 3@109, YR 2@109. Calving Interval 3@334 days.
- Her dam recorded individual performance of WWR 115 prior to her induction into the Big Rok Breeding program. She produced three consecutive daughters including two herd replacements, one which is a full sister to 729.
- She ranks in the top 3% for WWR and top 10% for YW EPDs among non-parent cows.



Big Rok Gale 724

Born: 07/28/17 19134322 Freeze Brand: 724 Cow

Basin Rainmaker 654X #
Coleman Rainmaker 356 +
14796879 KMK Donna J311 +

Koupals B&B Extra 0011 #*
Big Rok Gale 564
18427964 G K A F Gale 7716

Basin Rainmaker D S 380U #
Basin Bardolene 423U
D H D Traveler 6807 #
Brooks Donna 319 +
Koupals B&B EXTRA 7080 *
B&B Blkdb Progress 5030 #
Big Rok Ole 450
G K A F Gale 502

BW		205 Wt.		WWR		365 Wt.		YWR			
72		540		96		828		99			
PRODUCTION EPDs				MATERNAL EPDs				\$ VALUES			
CEM	BW	WW	YW	CEM	Milk	\$EN	\$W	\$F	\$G	\$B	
+5	+1.0	+4.8	+9.0	+7	+31	-18.25	+46.93	+47.32	NA	NA	
CARCASS	CW	NA	MARB	RE A	FAT	NA	NA	NA	NA	NA	
+5	+1.0	+4.8	+9.0	+7	+31	-18.25	+46.93	+47.32	NA	NA	

- Dam's Production: NR 1@96, YR 1@99.
- She stems from a first-calf heifer that earned her admission to the Big Rok breeding program with an individual WWR 113 among 57 contemporaries.
- The Gale family was pioneered in the Mc Cumber program in ND and propagated successfully at Krauth Angus Farm in IA.
- Her sire, Coleman Rainmaker 356 is a full brother to Coleman Donna 386, foundation Donna that produced a slew of AI and herd sires, as well as remunerative females that include Coleman Donna 714, the \$145,000 1/2 interest dam of Coleman Regis 904.



Big Rok Lucy K732

Born: 07/29/17 19139952 Freeze Brand: 732 Cow

Rito 707 of Ideal 3407 7075 +
S A V Resource 1441 #+*
17016597 S A V Blackcap May 4136 *

G D A R Rainmaker 340#
Big Rok Lucy K204 +
17341497 Wms Lucy 65 +

R R Rito 707 #
Ideal 3407 of 1418 076
S A V 8180 Traveler 004 #
S A V May 2397 #+
Lovana #
Lady Blackbird 987 G D A R #
Traveler 124 G D A R #
V D A R Lucy 231

BW		205 Wt.		WWR		365 Wt.		YWR			
84		569		101		807		96			
PRODUCTION EPDs				MATERNAL EPDs				\$ VALUES			
CEM	BW	WW	YW	CEM	Milk	\$EN	\$W	\$F	\$G	\$B	
+1	+2.3	+4.9	+9.0	+2	+26	-11.25	+40.68	+46.61	+18.23	+110.80	
CARCASS	CW	NA	MARB	RE A	FAT	NA	NA	NA	NA	NA	
+1	+2.3	+4.9	+9.0	+2	+26	-11.25	+40.68	+46.61	+18.23	+110.80	

- Dam's Production: NR 4@105, YR 4@102, IMF 3@103, REA 3@105, Rib Fat 3@100, Rump Fat 3@96. Calving Interval 4@355 days.
- Maternal brothers have been selected by Aaron Baldwin, Middle River MN; Knutson Angus, Oakes ND and Mark Lewis, Hawley MN.

Big Rok Long Yearling Heifers



MAR Innovation 251

Sire of Lot 736



Connealy Black Granite

Sire of Lot 753



Connealy Guinness

Sire of Lots 749 & 750

736 Big Rok Heather Lass 736

Born: 07/29/17 19139926 Freeze Brand: 736 Cow

Connealy Impression #*
MAR Innovation 251 #*
16983331 MAR Final Kahuna 856 #*

Prairie Pride Next Step 2036 *
Big Rok Heather Lass 4138
18118656 Big Rok Heather Lass 8117

Connealy Reflection #
Pearl Pammy of Conanga 194
S A V Final Answer 0035 #*
MAR Kahuna Precision 328 674 #
SydGen 928 Destination 5420 #+
Flying V Miss Pride 426
Big Rok Benchmark 610
Big Rok Heather Lass 575

BW		205 Wt.		WWR		365 Wt.		YWR		
70		677		120		975		116		
PRODUCTION EPDs				MATERNAL EPDs			\$ VALUES			
CED	BW	WW	YW	CEM	Milk	SEN	\$W	\$F	\$G	\$B
+1.2	+3.2	+6.5	+118	+9	+24	-21.47	+47.43	+87.72	NA	NA
CARCASS	CW	NA	MARB	NA	REA	NA	FAT	NA	NA	NA

- Dam's Production: Calving Interval 2@352 days.
- Born twin with a cow.
- Innovation X Next Step results in enviable EPD values ranking her in the top 15% for WW and top 10% for YW among non-parent bulls.
- Keep in mind, Innovation is out of a fourth-generation Pathfinder dam.

749 Big Rok Lucy 749

Born: 07/31/17 19134987 Freeze Brand: 749 Cow

Connealy Dublin 8223 #
Connealy Guinness #*
17031279 Panda of Conanga 3609

Koupals B&B Extra 0011 *
Big Rok Lucy 589
18427965 Big Rok Lucy 598

Connealy Full Freight
Black Rina of Conanga 69
EGL Target 1148
Ponderra of Conanga 750
Koupals B&B EXTRA 7080 *
B&B Blkbd Progress 5030 #
Big Rok Milky Way 331 +
Big Rok Lucy 360

BW		205 Wt.		WWR		365 Wt.		YWR		
74		566		101		832		100		
PRODUCTION EPDs				MATERNAL EPDs			\$ VALUES			
CED	BW	WW	YW	CEM	Milk	SEN	\$W	\$F	\$G	\$B
+1	+2.1	+5.8	+101	+8	+26	-16.27	+50.23	+60.51	NA	NA
CARCASS	CW	NA	MARB	NA	REA	NA	FAT	NA	NA	NA

- Dam's Production: NR 1@101, YR 1@100.
- Above average performance and out of a first calf heifer.
- Here is some outcross genetics to put in your herd.

750 Big Rok Lucy 750

Born: 07/31/17 19134992 Freeze Brand: 750 Cow

Connealy Dublin 8223 #
Connealy Guinness #*
17031279 Panda of Conanga 3609

Msar High Noon 9463
Big Rok Lucy 521
18426724 G K A F Lucy 7708 #

Connealy Full Freight
Black Rina of Conanga 69
EGL Target 1148
Ponderra of Conanga 750
A A R High Five 8563 #
Msar Pride 103 #
Big Rok Titan 249
G K A F Lucy 384 #+

BW		205 Wt.		WWR		365 Wt.		YWR		
74		518		92		798		95		
PRODUCTION EPDs				MATERNAL EPDs			\$ VALUES			
CED	BW	WW	YW	CEM	Milk	SEN	\$W	\$F	\$G	\$B
+4	+1.5	+5.5	+97	+7	+27	-15.81	+50.31	+55.23	NA	NA
CARCASS	CW	NA	MARB	NA	REA	NA	FAT	NA	NA	NA

- Dam's Production: YR 1@95.
- Her dam is a first-calf heifer with strong individual performance featuring a BWR 93 and WWR 105 among 57 contemporaries.
- Her sire, Connealy Guinness, is a Pathfinder sire with high accuracies and a reputation as a strong maternal sire making great daughters that are deep, easy doing and have excellent udders.

753 Big Rok Enchantress 753

Born: 07/31/17 19139949 Freeze Brand: 753 Cow

Connealy Consensus 7229 #*
Connealy Black Granite #*
17028963 Eura Elga of Conanga 9109 #

Cole Creek Black Cedar 46P#
Big Rok Enchantress 432
18122541 G K A F Enchantress 7719 #

Connealy Consensus #*
Blue Lilly of Conanga 16
S A V Bismarck 5682 #+
Eura Cal of Conanga 56B
C H Quantum 6247 #
Cole Creek Clova Juanada 67
Big Rok Titan 249
G K A F Enchantress 2056 +

BW		205 Wt.		WWR		365 Wt.		YWR		
70		581		103		815		97		
PRODUCTION EPDs				MATERNAL EPDs			\$ VALUES			
CED	BW	WW	YW	CEM	Milk	SEN	\$W	\$F	\$G	\$B
+10	+0.7	+4.7	+82	+11	+25	-6.30	+44.20	+33.51	NA	NA
CARCASS	CW	NA	MARB	NA	REA	NA	FAT	NA	NA	NA

- Dam's Production: BR 2@93, NR 2@97, YR 2@95. Calving Interval 2@362 days.
- Her 2016 maternal sister is retained in the herd.
- Connealy Black Granite was an \$80,000 feature of the 2012 Connealy Spring Bull Sale and the favored son of Consensus in the offering. He currently boasts a CED in the top 3% and a SW in the top 2% of proven sires. Black Granite sired the \$37,500 top-selling bred heifer at the 2018 National Western Foundation Female Sale.

Big Rok Long Yearling Heifers



Msar High Noon 9463
Sire of Lots 776 & 793



Big Rok Charlie 550
Sire of Lot 7138



Big Rok Lucy 760

Born: 08/01/17 Unregistered Purebred Angus Freeze Brand: 760 Cow

Basin Rainmaker 654X #
Coleman Rainmaker 356 +
14796879 KMK Donna J311 +

Msar High Noon 9463
Big Rok Lucy 556
18426726 Big Rok Lucy 0121

Basin Rainmaker D S 380U #
Basin Bardolene 423U
D H D Traveler 6807 #
Brooks Donna 319 +
A A R High Five 8563 #
Msar Pride 103 #
Big Rok Ole 823 +
Big Rok Lucy 604

SIRE'S EPDS														
CED	BW	WW	YW	SC	DOC	HP	CEM	Milk	CW	MB	RE	FAT	\$W	\$B
+12	-2.4	+25	+53	+18	-.25	+7.9	+5	+37	+13	-.09	+2.0	+0.19	+41.51	+41.60
DAM'S EPDS														
CED	BW	WW	YW	SC	DOC	HP	CEM	Milk	CW	MB	RE	FAT	\$W	\$B
+2	+2.4	+53	+87	NA	NA	NA	+4	+22	+29	+33	+30	+0.28	+44.09	+93.63
BW		205 Wt.		WWR		365 Wt.		YWR						
74		556		NA		850		NA						



Big Rok Beauty 793

Born: 08/07/17 19134333 Freeze Brand: 793 Cow

A A R High Five 8563 #
Msar High Noon 9463
17641774 Msar Pride 103 #

Big Rok Benchmark 610
Big Rok Beauty 9114
16433748 Big Rok Beauty 348 #

A A R Image Maker 6538
A A R Donna 6514 #
Connealy Freightliner #
Msar Pride 1516
B C C Bushwacker 41-93 #
Big Rok Polly 968 +
Bon View New Design 878 #
Big Rok Beauty 827 +

BW		205 Wt.		WWR		365 Wt.		YWR						
78		576		102		854		102						
PRODUCTION EPDs				MATERNAL EPDs				\$ VALUES						
CED	BW	WW	YW	CEM	Milk	\$EN	\$W	\$F	\$G	\$B				
+5	+1.4	+60	+99	+4	+25	-11.69	+57.79	+58.11	+24.63	+109.57				
CARCASS	CW	I+34	.05	MARB	I+35	.05	REA	I+29	.05	FAT	I+038	.05		

- Dam's Production: NR 6@108, YR 6@104, IMF 3@105.
- Maternal brothers have been the herd sire selections of Mark Bratland, Greenbush MN; David Tiegs, Hankinson ND and Tim Twardowski, Long Prairie MN.
- Pathfinder grandam



Big Rok Polly 776

Born: 08/03/17 19134315 Freeze Brand: 776 Cow

A A R High Five 8563 #
Msar High Noon 9463
17641774 Msar Pride 103 #

GDAR Game Day 449#+
Big Rok Polly 285
17554990 Big Rok Polly 046

A A R Image Maker 6538
A A R Donna 6514 #
Connealy Freightliner #
Msar Pride 1516
Boyd New Day 8005 #+
G D A R Miss Wix 474 #
Big Rok Benchmark 610
Big Rok Polly 430 #

BW		205 Wt.		WWR		365 Wt.		YWR						
80		574		102		865		103						
PRODUCTION EPDs				MATERNAL EPDs				\$ VALUES						
CED	BW	WW	YW	CEM	Milk	\$EN	\$W	\$F	\$G	\$B				
+2	+2.3	+63	+105	+2	+21	-11.38	+50.58	+64.37	+29.76	+105.42				
CARCASS	CW	I+30	.05	MARB	I+39	.05	REA	I+47	.05	FAT	I+027	.05		

- Dam's Production: NR 4@98, YR 3@99. Calving Interval 4@364 days.
- Merlin Olson, Lengby MN selected her maternal brother from the 2016 offering and her only maternal sister was retained.
- Maternal grandsire, GDAR Game Day 449 is a Genex featured sire used extensively in the Sitz Angus program producing one of the top selling sire groups from year to year. His immense data set now features EPD accuracies in the mid 90's a \$W value in the top 10% and Pathfinder status.



Big Rok Lucy 7138

Born: 08/29/17 19134330 Freeze Brand: 7138 Cow

Coleman Charlo 0256 #+*
Big Rok Charlie 550
18427983 Big Rok Polly 230

Big Rok Product 312
Big Rok Lucy 5112
18426745 Big Rok Lucy 384

O C C Paxton 730P #*
Bohi Abigale 6014 +
Sitz Upward 10379 *
Big Rok Polly 520
Connealy Final Product #*
Big Rok Polly 520
Connealy Cavalry 1149 #*
Big Rok Lucy 023

BW		205 Wt.		WWR		365 Wt.		YWR						
68		506		90		794		95						
PRODUCTION EPDs				MATERNAL EPDs				\$ VALUES						
CED	BW	WW	YW	CEM	Milk	\$EN	\$W	\$F	\$G	\$B				
+5	+1.6	+50	+92	+6	+25	-10.79	+42.71	+49.57	NA	NA				
CARCASS	CW	NA	NA	MARB	NA	REA	NA	FAT	NA	NA				

- Dam's Production: BR 1@96, YR 1@95.
- Her dam is a first-calf heifer descending from Big Rok Lucy 384 the dam of lot 765 in this offering.



- NOTES -

Sale Managed By:
Conover
Auction Service
P.O. Box 9 - Baxter, IA 50028
AL & JEANNE CONOVER
641-227-3537 - 641-227-3792 (FAX)
DAVE SWEENEY - 641-373-4340
www.conoverauction.com
conover@conoverauction.com

FAMILY

